

STATE OF ILLINOIS
DEPARTMENT OF TRANSPORTATION

F.A.P. RTE.	SECTION	COUNTY	TOTAL SHEETS	SHEET NO.
668	28CJS	SANGAMON	16	1
		ILLINOIS	CONTRACT NO. 72631	

D-96-040-22

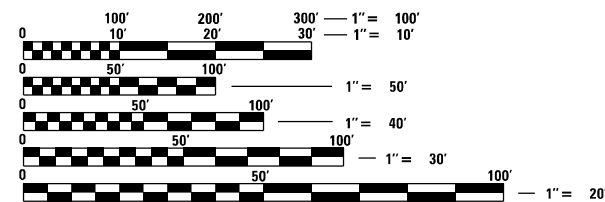
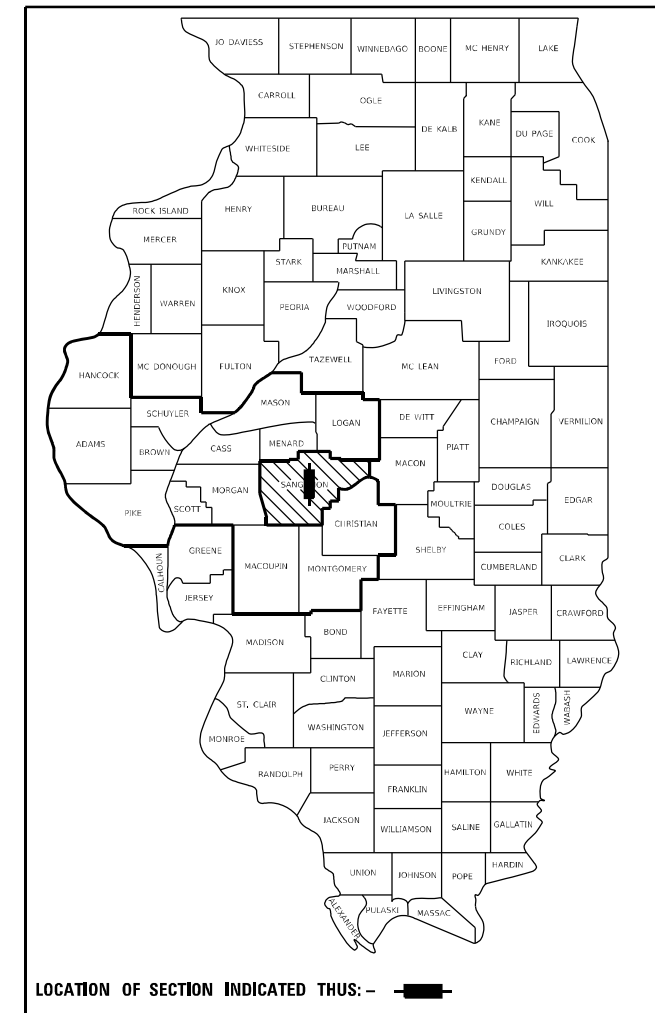
FOR INDEX OF SHEETS, SEE SHEET NO. 2

HIGHWAY CLASSIFICATION

F.A.P. Route 668 (IL 29)
fr. N of Ridge Ave. to N of Linden Ave. on DIRKSEN PKWY
ADT: 16,075 (2021)
CLASSIFICATION: OTHER PRINC ART
DESIGN SPEED: 45 MPH
POSTED SPEED: 40 MPH

PROPOSED
HIGHWAY PLANS

FAP ROUTE 668 (IL 29, DIRKSEN PKWY)
SECTION 28CJS
PROJECT NHPP-COWR(150)
CRACK & JOINT SEALING
SANGAMON COUNTY
C-96-048-22

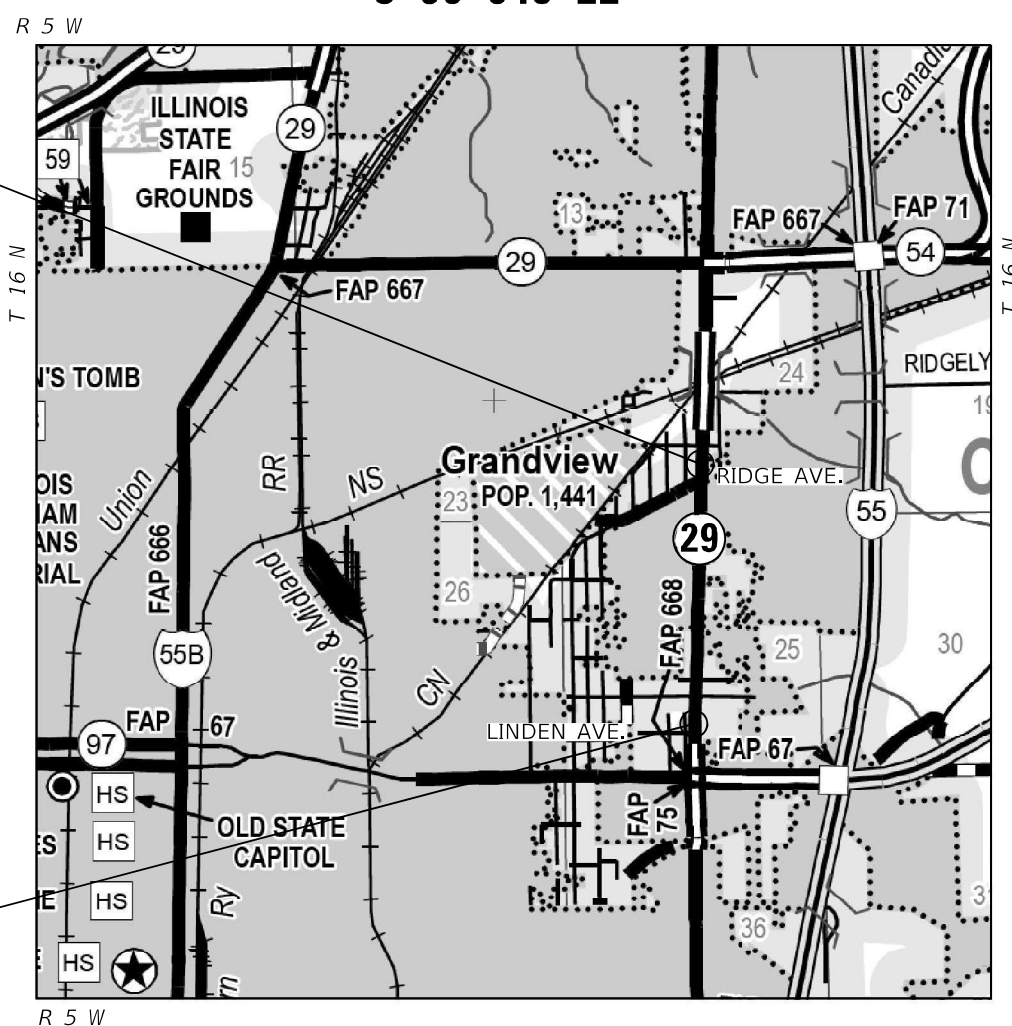


FULL SIZE PLANS HAVE BEEN PREPARED USING STANDARD ENGINEERING SCALES, REDUCED SIZED PLANS WILL NOT CONFORM TO STANDARD SCALES. IN MAKING MEASUREMENTS ON REDUCED PLANS, THE ABOVE SCALES MAY BE USED.

J.U.L.I.E.
JOINT UTILITY LOCATION INFORMATION FOR EXCAVATORS
1-800-892-0123
OR 811

LIMITS OF IMPROVEMENT
BEGINS AT STA. 166+79.96

LIMITS OF IMPROVEMENT
ENDS AT STA. 220+01.25



GROSS LENGTH = 5,321.29 FT. = 1.02 MILE
NET LENGTH = 5,321.29 FT. = 1.02 MILE

PROJECT ENGINEER: BRIAN LANINGHAM (217) 782-6990
PROJECT MANAGER: RENE CABRERA (217) 558-5140

CONTRACT NO. 72631

STATE OF ILLINOIS
DEPARTMENT OF TRANSPORTATION

SUBMITTED December 15, 2022

Greg P. Meyer
REGIONAL ENGINEER

February 3, 2023
Scott A. Etkin
ENGINEER OF DESIGN AND ENVIRONMENT

February 3, 2023
Stephen M. Smith
DIRECTOR OF HIGHWAYS PROJECT IMPLEMENTATION

PRINTED BY THE AUTHORITY
OF THE STATE OF ILLINOIS

(IL 29)
 6-01503-0000
 80% FEDERAL
 20% STATE
 ROADWAY
 0005
 URBAN

CODE NO.	ITEM	UNIT	TOTAL QUANTITY	
45100100	CRACK ROUTING (PAVEMENT)	FOOT	2,500	2,500
45100200	CRACK FILLING	POUND	7,609	7,609
67100100	MOBILIZATION	L SUM	1	1
70102632	TRAFFIC CONTROL AND PROTECTION, STANDARD 701602	L SUM	1	1
70102635	TRAFFIC CONTROL AND PROTECTION, STANDARD 701701	L SUM	1	1

MODEL: Default
 FILE NAME: p:\ultra-cw-bentley.com\PIV\DOT\Documents\DOT Office\Dir\dir_6\Project\067263\ICADData_55\ICAD05sheets\0672631-urb-500.dgn

USER NAME = Rene.Cabrera	DESIGNED - RSC	REVISED -
	DRAWN - RSC	REVISED -
PLOT SCALE = 100,0000' / in.	CHECKED -	REVISED -
PLOT DATE = 12/12/2022	DATE -	REVISED -

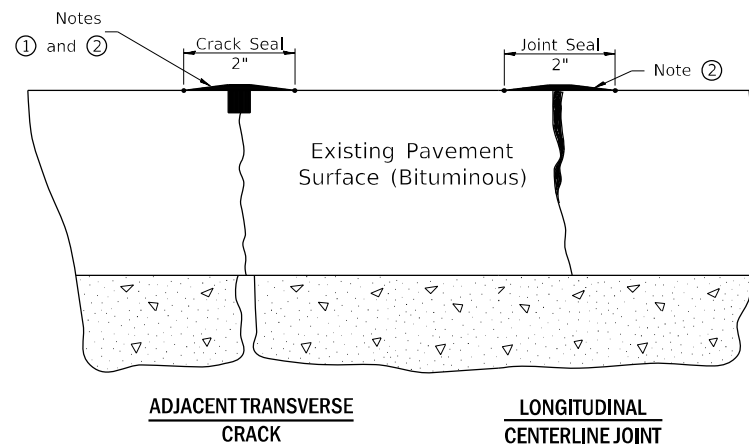
**STATE OF ILLINOIS
 DEPARTMENT OF TRANSPORTATION**

SUMMARY OF QUANTITIES

SCALE: NTS SHEET 1 OF 1 SHEETS STA. TO STA.

F.A.P. RTE.	SECTION	COUNTY	TOTAL SHEETS	SHEET NO.
668	28CJS	SANGAMON	16	3
			CONTRACT NO. 72361	
ILLINOIS FED. AID PROJECT				

CRACK /JOINT SEAL DETAIL



NOTES:

- ① Route or saw to 3/4" wide by 3/4" deep; (1:1 ratio).
- ② Overfill with sealant; squeegee to provide 2" wide flush "band-aid" effect; feather edges flush.

CRACK OR JOINT SEAL IN AREAS ADJACENT TO EXISTING PAVEMENT MARKINGS SHALL BE REDUCED OR ELIMINATED AS DIRECTED BY THE ENGINEER.

CRACK REPAIR SCHEDULE

LOCATION	LENGTH (FOOT)	NO. of CRACKS (EACH)	COEF. (LB/FT)	(45100100)	(45100200)
				CRACK ROUTING (PAVT) (FOOT)	CRACK FILLING (POUND)
<i>[F.A.P. 668 (IL 29)]</i>					
166+79.96 TO 179+22.50	1,242.54	4	0.28	-	1,391.64
179+22.50 TO 220+01.25	4,078.75	3	0.28	-	3,426.15
MISC MID LANE LONGITUDINAL CRACKING	5,321.29	2	0.18	-	1,915.66
TRANSVERSE CRACKING	2,500		0.35	2,500	875.00
(6-01503-000) PROJECT TOTAL				2,500	7,609

MODEL: Default
 FILE: Mainfile.pdw
 Subject: new benchday.com/PW/IDOT/Documents/IDOT Office/Dir/Dir: E:\Project\0672631\CADData_S5\0\CAD sheets\0672631-left-schedule.dgn

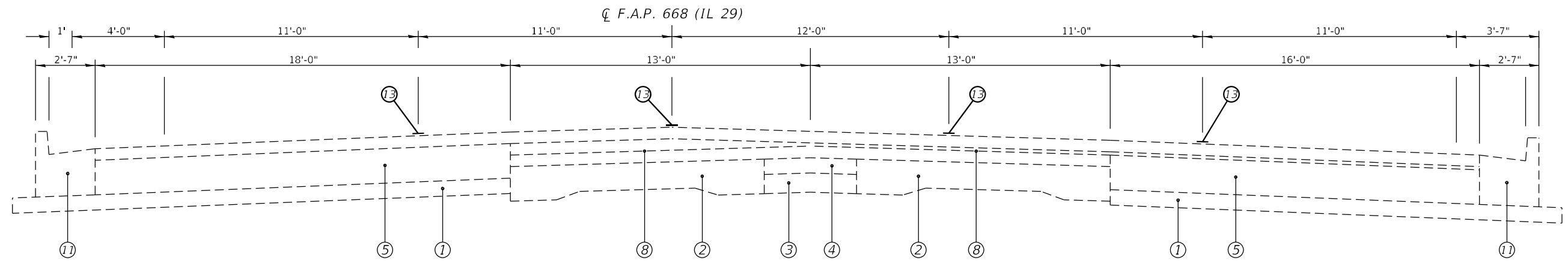
USER NAME = Rene.Cabrera	DESIGNED - RSC	REVISED -
	DRAWN - RSC	REVISED -
PLOT SCALE = 100,0000' / in.	CHECKED -	REVISED -
PLOT DATE = 12/12/2022	DATE -	REVISED -

**STATE OF ILLINOIS
DEPARTMENT OF TRANSPORTATION**

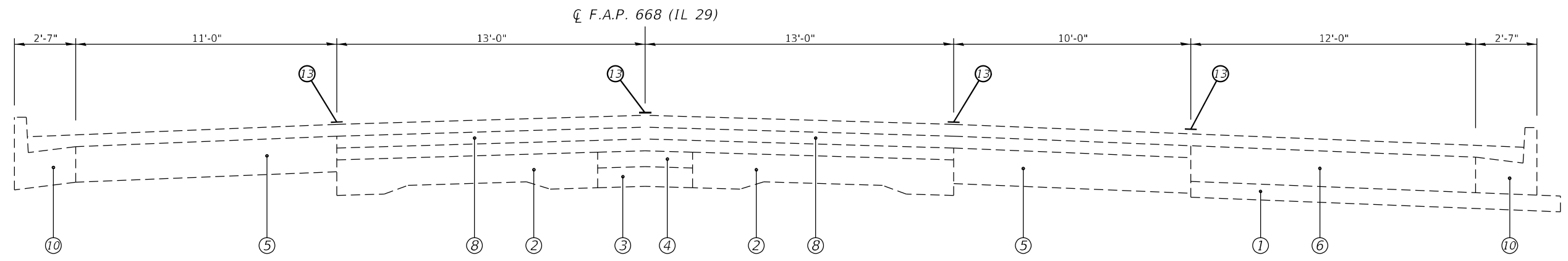
SCHEDULE OF QUANTITIES

SCALE: NTS SHEET 1 OF 1 SHEETS STA. TO STA.

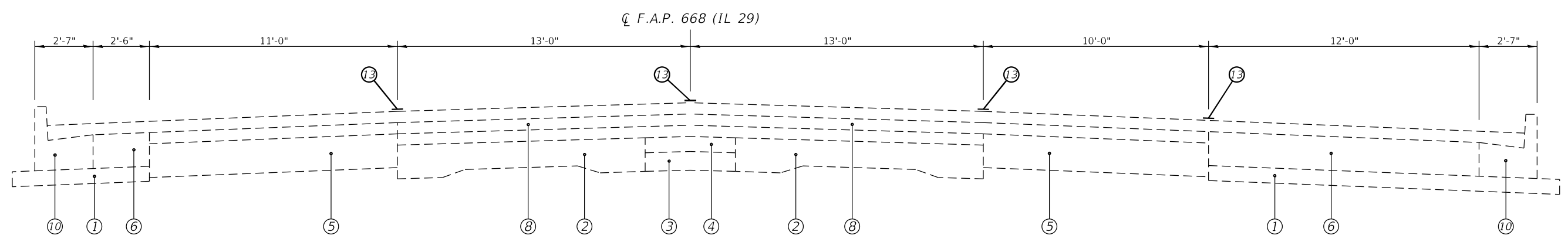
F.A.P. RTE.	SECTION	COUNTY	TOTAL SHEETS	SHEET NO.
668	28CJS	SANGAMON	16	4
CONTRACT NO. 72631				
ILLINOIS FED. AID PROJECT				



(1) STA 166+79.96 TO STA 168+94.66 [214.70']



(2) STA 168+94.66 TO STA 171+66.94 [272.28']



(3) STA 171+66.94 TO STA 173+66.66 [199.72']

LEGEND

① EXIST. SUB-BASE GRAN MATL, TY A	⑧ EXIST. BITUMINOUS OVERLAY
② EXIST. PCC PAVT, 9"-7"-9"	⑨ EXIST. CC&G, TY B-9.12 SPL
③ EXIST. PCC BASE CSE	⑩ EXIST. CC&G, TY B-9.24
④ EXIST. BIT PAVT	⑪ EXIST. CC&G, TY B-6.24
⑤ EXIST. BIT BASE CSE WID, 9"	⑫ EXIST. PCC SIDEWALK
⑥ EXIST. BIT BASE CSE WID, 8"	⑬ PROP. CRACK SEAL
⑦ EXIST. BASE CSE WID, 11"	

MODEL: Default
 FILE NAME: \\sdd\project\aw_bentley.com\p\indot\documents\indot_offices\dir\dir_6\Project\0672631\CADD\data_55\0672631\0672631.dgn

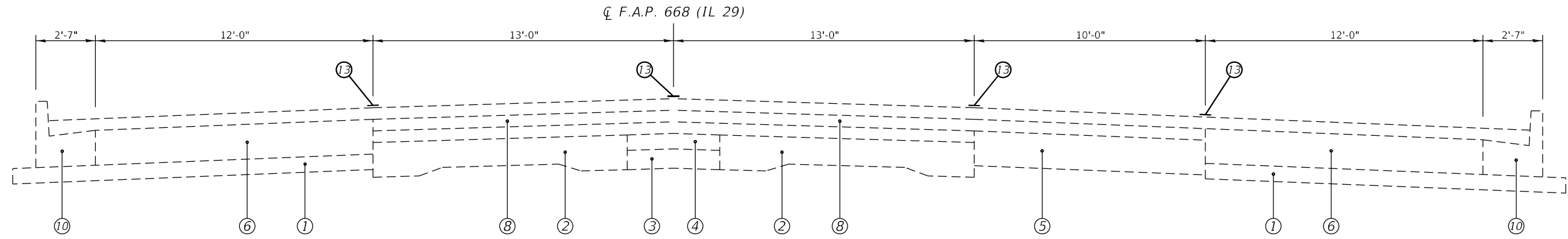
USER NAME = Jacob.Drainer	DESIGNED - RSC	REVISED -
DRAWN - RSC	REVISIONS -	
PLOT SCALE = 100,0000' / in.	CHECKED -	REVISED -
PLOT DATE = 7/7/2022	DATE -	REVISED -

STATE OF ILLINOIS
DEPARTMENT OF TRANSPORTATION

TYPICAL SECTIONS

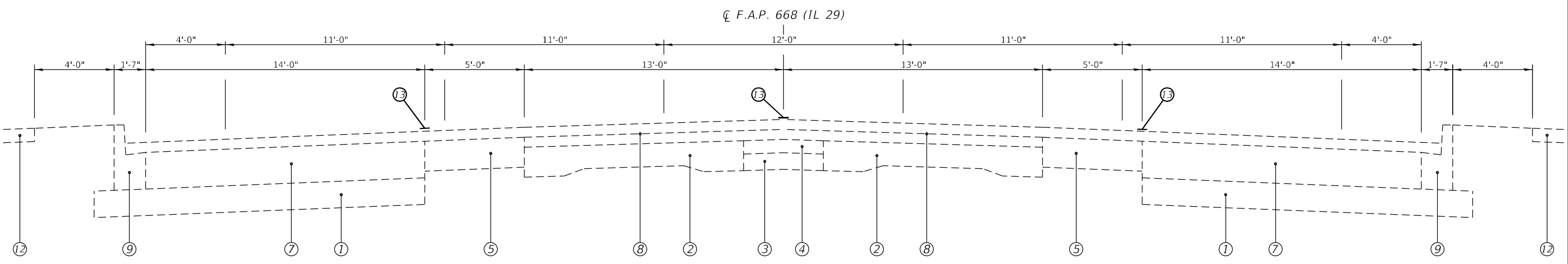
SCALE: NTS SHEET 1 OF 2 SHEETS STA. 166+79.96 TO STA. 173+66.66

F.A.P. RTE.	SECTION	COUNTY	TOTAL SHEETS	SHEET NO.
668	28CJS	SANGAMON	16	5
CONTRACT NO. 72631				
ILLINOIS FED. AID PROJECT				



(3) STA 173+66.66 TO STA 175+85.35 [218.69']

NOTE:
FOUR LONGITUDINAL JOINTS TO BE SEALED CHANGES TO THREE AT STA 179+22.50.



(3) STA 175+85.35 TO STA 220+01.25 [4,415.90']

LEGEND

① EXIST. SUB-BASE GRAN MATL, TY A	⑧ EXIST. BITUMINOUS OVERLAY
② EXIST. PCC PAVT, 9"-7"-9"	⑨ EXIST. CC&G, TY B-9.12 SPL
③ EXIST. PCC BASE CSE	⑩ EXIST. CC&G, TY B-9.24
④ EXIST. BIT PAVT	⑪ EXIST. CC&G, TY B-6.24
⑤ EXIST. BIT BASE CSE WID, 9"	⑫ EXIST. PCC SIDEWALK
⑥ EXIST. BIT BASE CSE WID, 8"	⑬ PROP. CRACK SEAL
⑦ EXIST. BASE CSE WID, 11"	

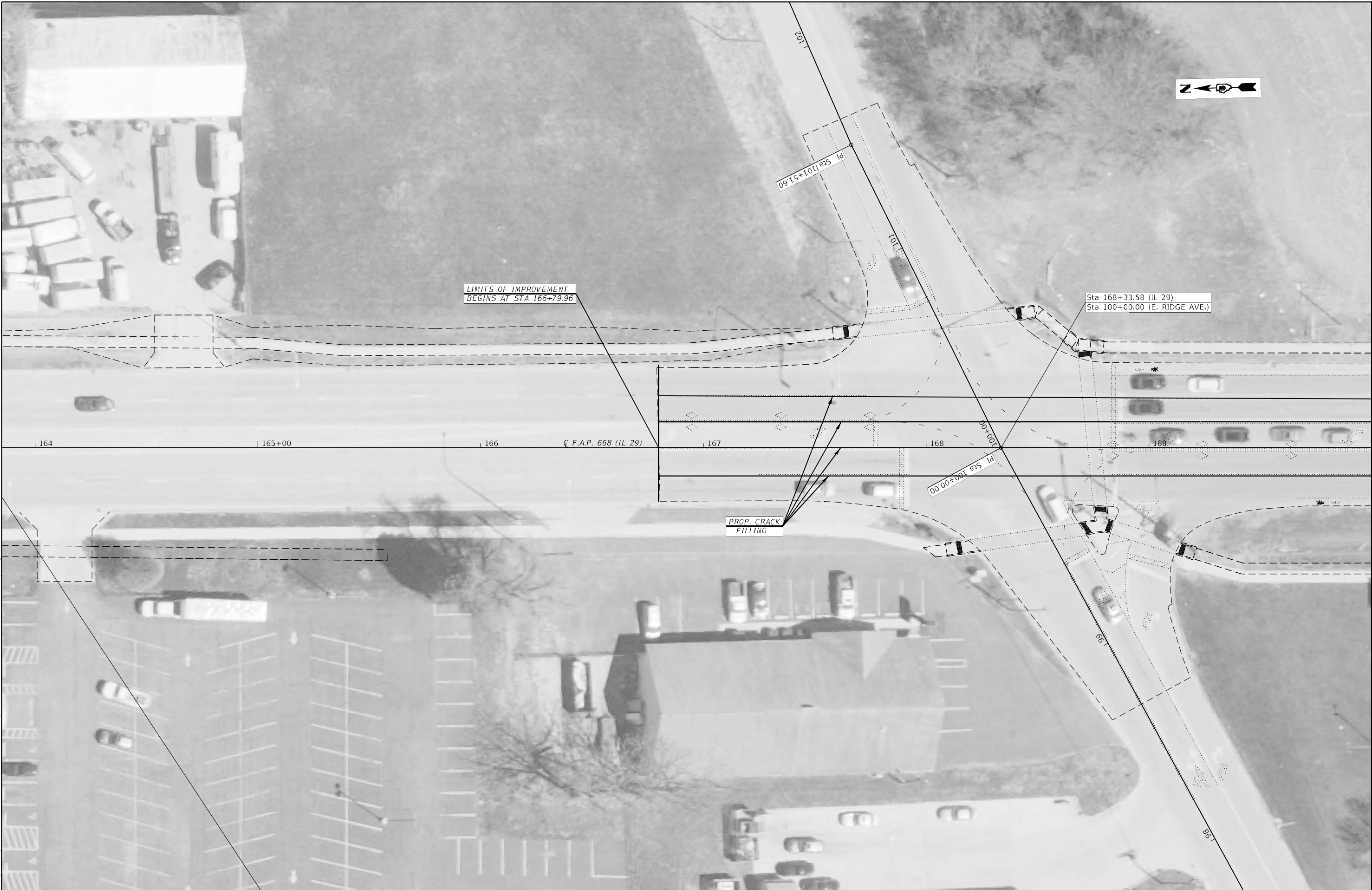
MODEL: Default
 FILE: \\nafe-pw-bentley.com\P\INDOT\Documents\DOT Office\Dir\dir: E:\Project\0672631\CADData_S5\0672631\0672631.dgn

USER NAME = Rene.Cabrera	DESIGNED - RSC	REVISED -
	DRAWN - RSC	REVISED -
PLOT SCALE = 100,0000 ' / in.	CHECKED -	REVISED -
PLOT DATE = 12/15/2022	DATE -	REVISED -

**STATE OF ILLINOIS
DEPARTMENT OF TRANSPORTATION**

TYPICAL SECTIONS	
SCALE: NTS	SHEET 2 OF 2 SHEETS
STA. 173+66.66 TO STA. 220+01.25	

F.A.P. RTE. 668	SECTION 28CJS	COUNTY SANGAMON	TOTAL SHEETS 16	SHEET NO. 6
ILLINOIS FED. AID PROJECT			CONTRACT NO. 72631	



MODEL: Default
 FILE: \\mfrs-pw-backend.com\P\W\DOT\Documents\DOT Office\Dir\dir: E:\Project\0672631\CADD\data_S5\0672631\CADD\data_S5\0672631\left-4-ba.dwg

MATCH LINE STA 170+00.00

USER NAME = Jacob.Draher	DESIGNED - RSC	REVISED -
DRAWN - RSC	REVISIONS -	
PLOT SCALE = 40,0000 * / in.	CHECKED -	REVISED -
PLOT DATE = 7/7/2022	DATE -	REVISED -

STATE OF ILLINOIS
DEPARTMENT OF TRANSPORTATION

PLAN SHEETS			
SCALE: 20	SHEET 1 OF 10 SHEETS	STA. 163+85.00	TO STA. 170+00.00

F.A.P. RTE.	SECTION	COUNTY	TOTAL SHEETS	SHEET NO.
668	28CJS	SANGAMON	16	7
CONTRACT NO. 72631				
ILLINOIS FED. AID PROJECT				



MATCH LINE STA 170+00.00

MATCH LINE STA 176+00.00



PROP. CRACK FILLING

MODEL: Default
FILE: Mainfile.pxl
Subject: new_beaufay.com\PI\WIDOT\Documents\DOT Office\Dir\dir: 6\Project\0672631\CAD\data_5510\CAD\sheet\0672631_sch-4-ba.dgn

USER NAME = Jacob.Draiser	DESIGNED - RSC	REVISED -
DRAWN - RSC	REVISOR -	
PLOT SCALE = 40,0000 * / in.	CHECKED -	REVISED -
PLOT DATE = 7/7/2022	DATE -	REVISED -

**STATE OF ILLINOIS
DEPARTMENT OF TRANSPORTATION**

PLAN SHEETS			
SCALE: 20	SHEET 2 OF 10 SHEETS	STA. 170+00.00	TO STA. 176+00.00

F.A.P. RTE.	SECTION	COUNTY	TOTAL SHEETS	SHEET NO.
668	28CJS	SANGAMON	16	8
CONTRACT NO. 72631				
ILLINOIS FED. AID PROJECT				

MODEL: Default
 FILE: 241116.ctb
 PROJECT: 0672631\CD\Drawings - 5510\CD\Drawings\0672631\CD\Drawings\0672631.ctb
 USER: jdr



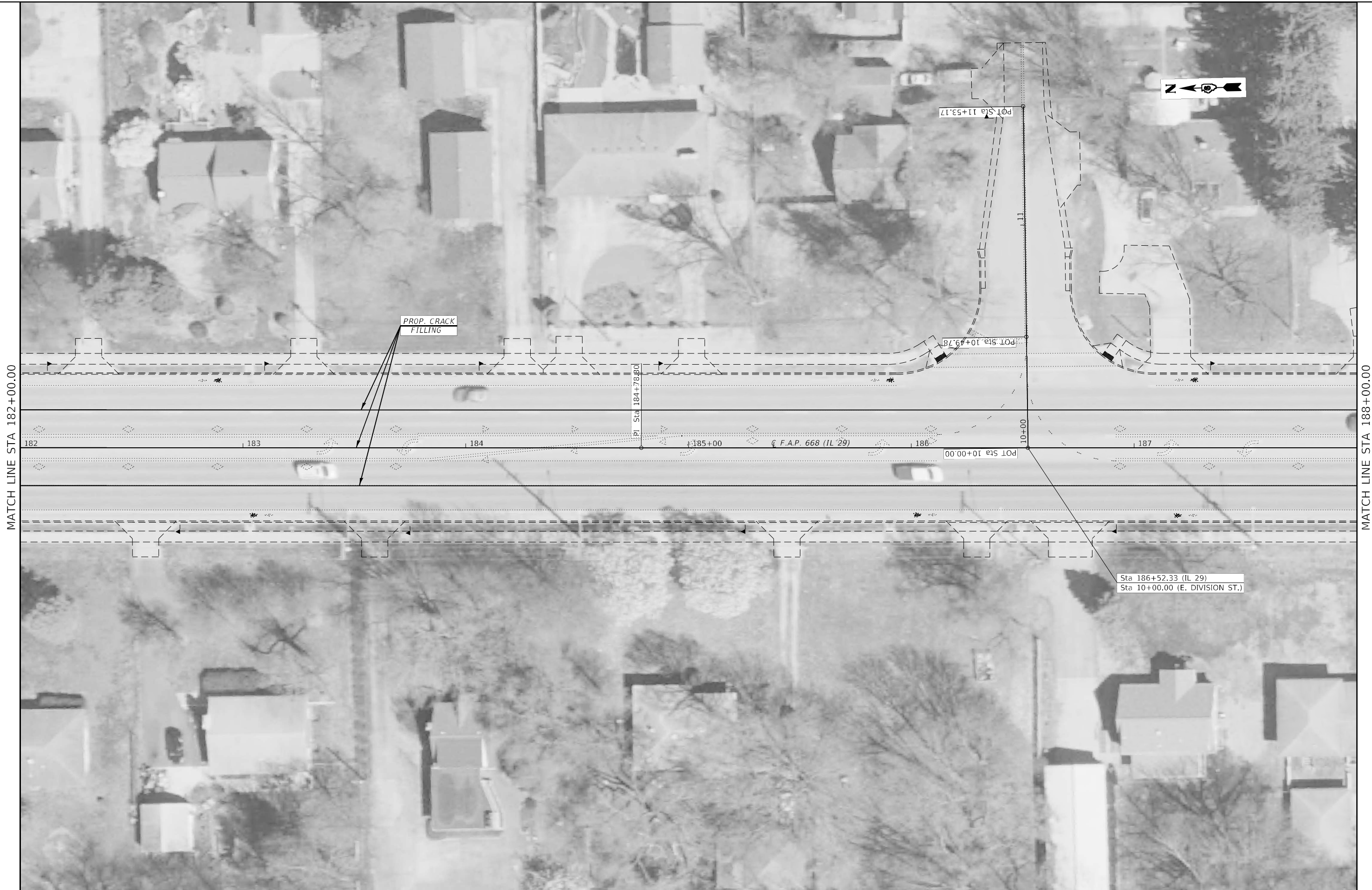
USER NAME = Jacob.Draher	DESIGNED - RSC	REVISED -
DRAWN - RSC	REVISIONS -	
PLOT SCALE = 40,0000 * / in.	CHECKED -	REVISED -
PLOT DATE = 7/7/2022	DATE -	REVISED -

**STATE OF ILLINOIS
 DEPARTMENT OF TRANSPORTATION**

PLAN SHEETS			
SCALE: 20	SHEET 3 OF 10 SHEETS	STA. 176+00.00 TO STA. 182+00.00	

F.A.P. RTE. 668	SECTION 28CJS	COUNTY SANGAMON	TOTAL SHEETS 16	SHEET NO. 9
ILLINOIS FED. AID PROJECT			CONTRACT NO. 72631	

MODEL: Default
 FILE: \\mfrs-pw-bentley.com\P\INDOT\Documents\DOT Office\Dir\dir_6\Project\0672631\CADD\data_S5\0\CAD\sheet\0672631-4-18.dwg



USER NAME = Jacob.Draher	DESIGNED - RSC	REVISED -
DRAWN - RSC	REVISIONS -	
PLOT SCALE = 40,0000 */ in.	CHECKED -	REVISED -
PLOT DATE = 7/7/2022	DATE -	REVISED -

**STATE OF ILLINOIS
 DEPARTMENT OF TRANSPORTATION**

PLAN SHEETS

SCALE: 20 SHEET 4 OF 10 SHEETS STA. 182+00.00 TO STA. 188+00.00

F.A.P. RTE.	SECTION	COUNTY	TOTAL SHEETS	SHEET NO.
668	28CJS	SANGAMON	16	10
CONTRACT NO. 72631				
ILLINOIS FED. AID PROJECT				

MODEL: Default
 FILE: \\murf.illinois.gov\public\aw-beckley.com\PI\INDOT\Documents\DOT Office\District 6\Project\0672631\CAD\data_S5\0672631\cadd\sheet50672631-1-14-24.dwg



MATCH LINE STA 188+00.00

MATCH LINE STA 194+00.00

USER NAME = Jacob.Draher	DESIGNED - RSC	REVISED -
	DRAWN - RSC	REVISED -
PLOT SCALE = 40,0000 */ in.	CHECKED -	REVISED -
PLOT DATE = 7/7/2022	DATE -	REVISED -

**STATE OF ILLINOIS
 DEPARTMENT OF TRANSPORTATION**

PLAN SHEETS

SCALE: 20 SHEET 5 OF 10 SHEETS STA. 188+00.00 TO STA. 194+00.00

F.A.P. RTE.	SECTION	COUNTY	TOTAL SHEETS	SHEET NO.
668	28CJS	SANGAMON	16	11
			CONTRACT NO. 72631	
ILLINOIS FED. AID PROJECT				



MATCH LINE STA 194+00.00

MATCH LINE STA 200+00.00



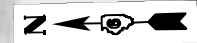
MODEL: Default
 FILE: \\mfrs-pw-bentley.com\P\W\DOT\Documents\DOT Office\Dr\dr\ 6\Project\0672631\CADD\data_S5\0\CAD\sheet\0672631-urb-4-ba.dgn

USER NAME = Jacob.Draher	DESIGNED - RSC	REVISED -
DRAWN - RSC	REVISIONS -	
PLOT SCALE = 40,0000 */ in.	CHECKED -	REVISED -
PLOT DATE = 7/7/2022	DATE -	REVISED -

**STATE OF ILLINOIS
 DEPARTMENT OF TRANSPORTATION**

PLAN SHEETS	
SCALE: 20	SHEET 6 OF 10 SHEETS
STA. 194+00.00 TO STA. 200+00.00	

F.A.P. RTE. 668	SECTION 28CJS	COUNTY SANGAMON	TOTAL SHEETS 16	SHEET NO. 12
CONTRACT NO. 72631				
ILLINOIS FED. AID PROJECT				



MATCH LINE STA 200+00.00

MATCH LINE STA 206+00.00



MODEL: Default
FILE: \\na11c2-pw-bentley.com\P\INDOT\Documents\1001 Office\Dir\drdr_6\Project\0672631\CADD\data_S5\0672631\Sheet-4.dwg

USER NAME = Jacob.Draher	DESIGNED - RSC	REVISED -
DRAWN - RSC	REVISIONS -	
PLOT SCALE = 40,0000 */ in.	CHECKED -	REVISED -
PLOT DATE = 7/7/2022	DATE -	REVISED -

**STATE OF ILLINOIS
DEPARTMENT OF TRANSPORTATION**

PLAN SHEETS			
SCALE: 20	SHEET 7 OF 10 SHEETS	STA. 200+00.00	TO STA. 206+00.00

F.A.P. RTE. 668	SECTION 28CJS	COUNTY SANGAMON	TOTAL SHEETS 16	SHEET NO. 13
			CONTRACT NO. 72631	
		ILLINOIS FED. AID PROJECT		

MODEL: Default
 FILE: 240125_20240125_20240125_20240125_20240125_20240125_20240125_20240125_20240125_20240125.dgn



USER NAME = Jacob.Draher	DESIGNED - RSC	REVISED -
DRAWN - RSC	REVISED -	
PLOT SCALE = 40,0000 * / in.	CHECKED -	REVISED -
PLOT DATE = 7/7/2022	DATE -	REVISED -

**STATE OF ILLINOIS
 DEPARTMENT OF TRANSPORTATION**

PLAN SHEETS			
SCALE: 20	SHEET 8 OF 10 SHEETS	STA. 206+00.00	TO STA. 212+00.00

F.A.P. RTE.	SECTION	COUNTY	TOTAL SHEETS	SHEET NO.
668	28CJS	SANGAMON	16	14
CONTRACT NO. 72631				
ILLINOIS FED. AID PROJECT				

MODEL: Default
 FILE: \\mari...
 PROJECT: \\dot...
 SHEET: 9



MATCH LINE STA 212+00.00

MATCH LINE STA 218+00.00

USER NAME = Jacob.Draher	DESIGNED - RSC	REVISED -
	DRAWN - RSC	REVISED -
PLOT SCALE = 40,0000' / in.	CHECKED -	REVISED -
PLOT DATE = 7/7/2022	DATE -	REVISED -

**STATE OF ILLINOIS
 DEPARTMENT OF TRANSPORTATION**

PLAN SHEETS			
SCALE: 20	SHEET 9 OF 10 SHEETS	STA. 212+00.00	TO STA. 218+00.00

F.A.P. RTE.	SECTION	COUNTY	TOTAL SHEETS	SHEET NO.
668	28CJS	SANGAMON	16	15
CONTRACT NO. 72631				
ILLINOIS FED. AID PROJECT				

