

STATE OF ILLINOIS
DEPARTMENT OF TRANSPORTATION

F.A.P. RTE.	SECTION	COUNTY	TOTAL SHEETS	SHEET NO.
332	D9 PATCH 2023-1	WHITE	12	1
		ILLINOIS	CONTRACT NO. 78974	

FOR INDEX OF SHEETS, SEE SHEET NO. 3
FOR SUMMARY OF QUANTITIES, SEE SHEET NO. 4

PROPOSED
HIGHWAY PLANS

FAP ROUTE 332 (IL 1)
SECTION D9 PATCH 2023-1
PATCHING AND
RESURFACING
WHITE COUNTY

C-99-018-23

TRAFFIC DATA

	2021	2023	2033	2043
P.V.S	5,150	5,250	5,800	6,410
S.U.S	400	410	450	500
M.U.S	950	970	1,070	1,180
ADT	6,500	6,630	7,320	8,090
DHV	585	595	660	730

TOWNSHIPS

GRAY

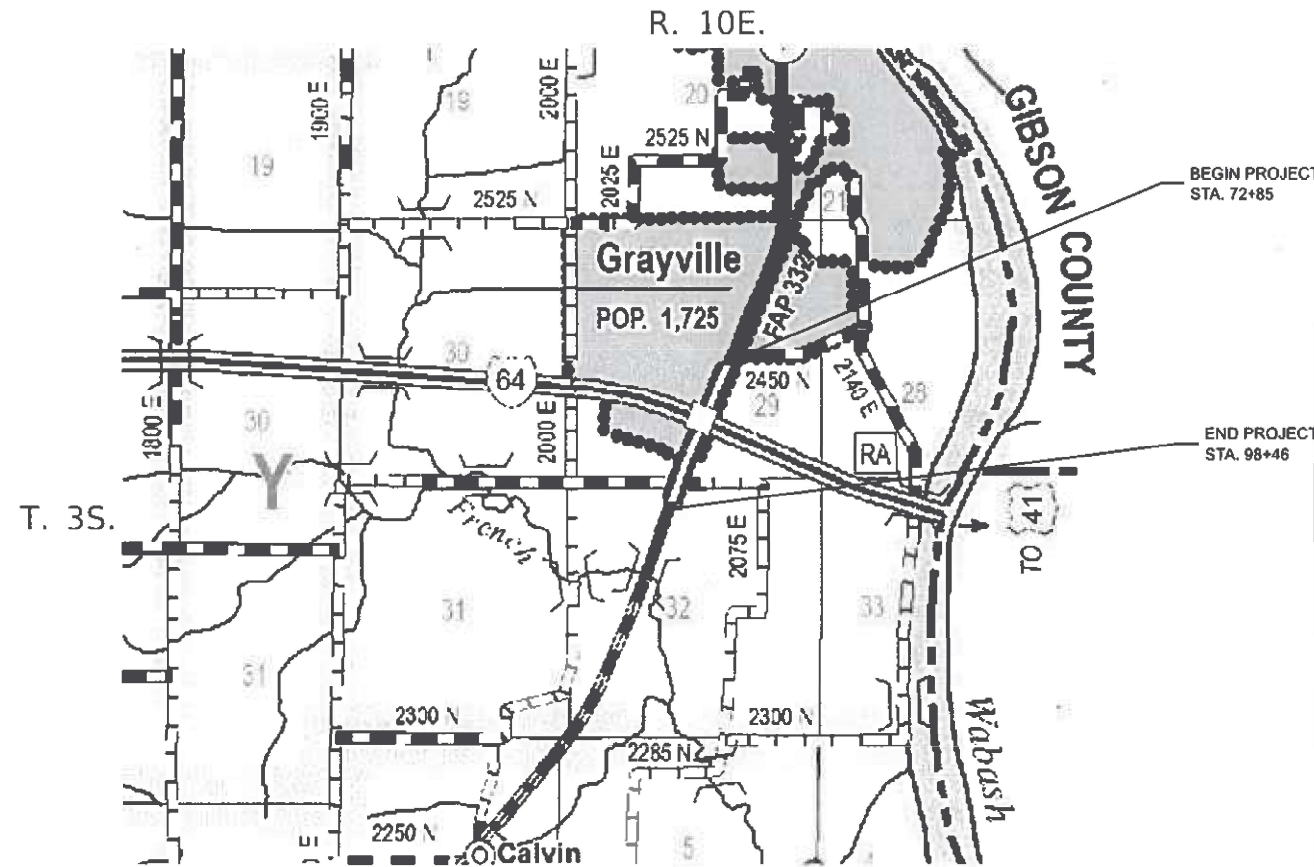
DESIGN DESIGNATION : NA
COORDINATE SYSTEM : ILLINOIS COORDINATE SYSTEM, EAST ZONE

POSTED SPEED : 55 MPH

J.U.L.I.E.
JOINT UTILITY LOCATION INFORMATION FOR EXCAVATION
1-800-892-0123
OR 811

PROJECT ENGINEER VALERIE ROLLA
PROJECT DESIGNER DACODA BLOCKLEY

CONTRACT NO. 78974



GROSS LENGTH = 3045 FT. = 0.6 MILES
NET LENGTH = 3045 FT. = 0.6 MILES



STATE OF ILLINOIS
DEPARTMENT OF TRANSPORTATION

SUBMITTED Oct 12 20 22

Kirk H. Brown
REGION FIVE ENGINEER

February 3, 2023
[Signature]
ENGINEER OF DESIGN AND ENVIRONMENT

February 3, 2023
[Signature]
DIRECTOR OF HIGHWAYS PROJECT IMPLEMENTATION

PRINTED BY THE AUTHORITY
OF THE STATE OF ILLINOIS

Prepared By: Charles Stein
DISTRICT STUDIES & PLANS ENGINEER

Examined By: Nancy New
DISTRICT LAND ACQUISITION ENGINEER

Examined By: Ca Nelson
DISTRICT PROGRAM DEVELOPMENT ENGINEER

Examined By: R. C. [Signature]
DISTRICT OPERATIONS ENGINEER

Examined By: Daryl J. [Signature]
DISTRICT PROJECT IMPLEMENTATION ENGINEER

Examined By: Daryl J. [Signature]
DISTRICT CONSTRUCTION ENGINEER

Examined By: Aan W. [Signature]
DISTRICT MATERIALS ENGINEER

MODEL: S:\MODELS\MAMES
FILE NAME: LF1E15

USER NAME = \$USERS	DESIGNED -	REVISED -
	DRAWN -	REVISED -
PLOT SCALE = \$SCALES	CHECKED -	REVISED -
PLOT DATE = \$DATES	DATE -	REVISED -

STATE OF ILLINOIS
DEPARTMENT OF TRANSPORTATION

SIGNATURE SHEET

SCALING SCALE SHEET 2 OF 12 SHEETS STA. TO STA.

F.A.P. RTE.	SECTION	COUNTY	TOTAL SHEETS	SHEET NO.
332	D9 PATCH 2023-1	WHITE	12	2
CONTRACT NO. 78974				
ILLINOIS FED. AID PROJECT				

SUMMARY OF QUANTITIES

COUNTY:	WHITE CO
ROUTE:	FAP 332
FUNDING:	100% STATE
LOCATION:	RURAL
	ROADWAY
	0005

CODE NUMBER	ITEM DESCRIPTION	UNIT	QUANTITY
40600290	BITUMINOUS MATERIALS (TACK COAT)	POUND	5,344
40600370	LONGITUDINAL JOINT SEALANT	FOOT	500
40600990	TEMPORARY RAMP	SQ YD	87
40604064	HOT-MIX ASPHALT SURFACE COURSE, IL-9.5, MIX "D", N90	TON	1,001
42000060	WELDED WIRE REINFORCEMENT	SQ YD	1,915
44000155	HOT-MIX ASPHALT SURFACE REMOVAL, 1 1/2"	SQ YD	11,875
44201019	CLASS B PATCHES, TYPE II, 14 INCH	SQ YD	213
44201023	CLASS B PATCHES, TYPE III, 14 INCH	SQ YD	359
44201025	CLASS B PATCHES, TYPE IV, 14 INCH	SQ YD	1,556
44201299	DOWEL BARS 1 1/2"	EACH	2,368
44213200	SAW CUTS	FOOT	6,316
44213204	TIE BARS 3/4"	EACH	189
48102100	AGGREGATE WEDGE SHOULDER, TYPE B	TON	35
67100100	MOBILIZATION	L SUM	1
X7010455	TRAFFIC CONTROL AND PROTECTION, STANDARD 701206 (SPECIAL)	L SUM	1

REV. - MS

MODEL: S00 (Sheet)
FILE NAME: P:\projects\new\entire\com\p\DOT\Documents\DOT_Official\District 9\RD0 Projects\78974\CAD\Drawings\DOT\Sheets\0918974-SHC-S00.dwg

USER NAME = Dacoda.Blockley PLOT SCALE = 0.16666633 1/in. PLOT DATE = 10/12/2022	DESIGNED - DRAWN - CHECKED - DATE -	REVISED - REVISED - REVISED - REVISED -	STATE OF ILLINOIS DEPARTMENT OF TRANSPORTATION	SUMMARY OF QUANTITIES	F.A.P. RTE. 332	SECTION D9 PATCH 2023-1	COUNTY WHITE	TOTAL SHEETS 12	SHEET NO. 4
SCALING SCALE SHEET 4 OF 12 SHEETS STA. TO STA.				ILLINOIS FED. AID PROJECT CONTRACT NO. 78974					

SUMMARY OF QUANTITIES - CONT

COUNTY: **WHITE CO**
 ROUTE: **FAP 332**
 FUNDING: **100% STATE**
 LOCATION: **RURAL ROADWAY 0005**

CODE NUMBER	ITEM DESCRIPTION	UNIT	
70100820	TRAFFIC CONTROL AND PROTECTION, STANDARD 701451	L SUM	1
70100825	TRAFFIC CONTROL AND PROTECTION, STANDARD 701456	L SUM	1
70107025	CHANGEABLE MESSAGE SIGN	CAL DA	28
70200100	NIGHTTIME WORK ZONE LIGHTING	L SUM	1
70300100	SHORT TERM PAVEMENT MARKING	FOOT	500
70300150	SHORT TERM PAVEMENT MARKING REMOVAL	SQ FT	167
70300211	TEMPORARY PAVEMENT MARKING LETTERS AND SYMBOLS - PAINT	SQ FT	138
70300241	TEMPORARY PAVEMENT MARKING - LINE 6"- PAINT	FOOT	9,376
70300281	TEMPORARY PAVEMENT MARKING - LINE 24"- PAINT	FOOT	100
* 78001100	PAINT PAVEMENT MARKING - LETTERS AND SYMBOLS	SQ FT	138
* 78001130	PAINT PAVEMENT MARKING - LINE 6"	FOOT	9,376
* 78001180	PAINT PAVEMENT MARKING - LINE 24"	FOOT	100
* 78100100	RAISED REFLECTIVE PAVEMENT MARKER	EACH	32
78300200	RAISED REFLECTIVE PAVEMENT MARKER REMOVAL	EACH	32
78300201	PAVEMENT MARKING REMOVAL - GRINDING	SQ FT	5,026
Z0034105	MATERIAL TRANSFER DEVICE	TON	1,001

REV. - MS

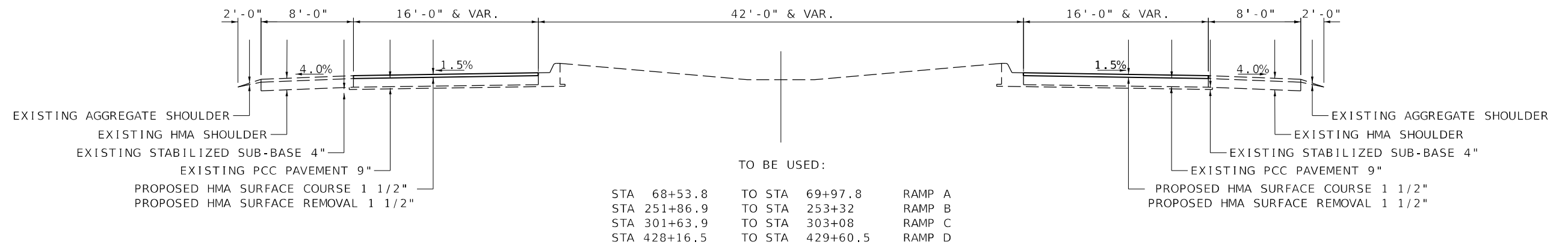
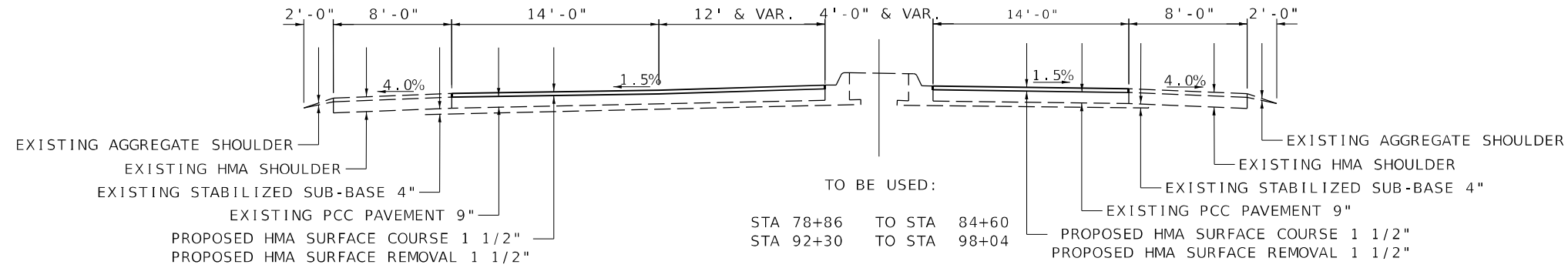
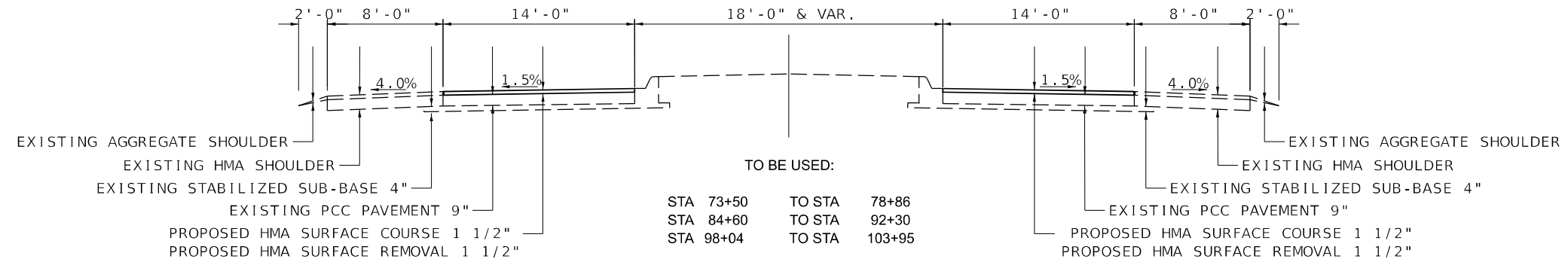
MODEL: S002 (Sheet)
FILE NAME: P:\InfoCenter\Inventory.com\PI\DOT\Documents\DOT_Official\District 9\RD Projects\78974\CAD\Drawings\Drawings\0918974-SHC-S&G.dwg

USER NAME = Dacoda.Blockley PLOT SCALE = 0.16666633 1/ in. PLOT DATE = 10/12/2022	DESIGNED - DRAWN - CHECKED - DATE -	REVISED - REVISED - REVISED - REVISED -	STATE OF ILLINOIS DEPARTMENT OF TRANSPORTATION	SUMMARY OF QUANTITIES	F.A.P. RTE. 332 SECTION D9 PATCH 2023-1 COUNTY WHITE TOTAL SHEETS 12 SHEET NO. 5	CONTRACT NO. 78974 ILLINOIS FED. AID PROJECT
---	--	--	---	------------------------------	--	---

SCALING SCALE SHEET 5 OF 12 SHEETS STA. TO STA.

TYPICAL SECTIONS

WHITE COUNTY FAP 332 (IL 1)



MODEL: Typical Sections (Sheet)
FILE NAME: p:\illicon\whitecounty\pmdoc\document\dot\Office\District 9\9890 Projects\78974\CAD\data\CAD\sheet\0978974-SUB-Typical.dgn

USER NAME = Dacoda.Blockley	DESIGNED -	REVISED -
PLOT SCALE = 0.16666633 1/16 in.	DRAWN -	REVISED -
PLOT DATE = 10/12/2022	CHECKED -	REVISED -
	DATE -	REVISED -

STATE OF ILLINOIS
DEPARTMENT OF TRANSPORTATION

TYPICALS

SCALE: 1:20 SHEET 6 OF 12 SHEETS STA. TO STA.

F.A.P. RTE. 332	SECTION D9 PATCH 2023-1	COUNTY WHITE	TOTAL SHEETS 12	SHEET NO. 6
CONTRACT NO. 78974			ILLINOIS FED. AID PROJECT	

CLASS B PATCHING SCHEDULE

LOCATION	LENGTH	WIDTH	CLASS B, TY II, 14"	CLASS B, TY III, 14"	CLASS B, TY IV, 14"	SAW CUTS	TIE BARS	DOWEL BARS	WELDED WIRE REINF.	COMMENTS
	FOOT	FOOT	SOYD	SOYD	SOYD	FOOT	EACH	EACH	SO YD	
IL 1 SB										
STA 72+01	6	13	9			51		22		
STA 72+99	10	13		15		59		22	15	
STA 73+98	9	16		16		66		28	16	
STA 74+25	9	16		16		66		28	16	
STA 74+90	21	16			38	90	7	28	38	
STA 75+73	33	15			55	111	11	26	55	
STA 76+49	6	15	10			57		26		
STA 76+83	9	15		15		63		26	15	
STA 77+09	6	15	10			57		26		
STA 78+13	6	15	10			57		26		EB ON RAMP
STA 79+72	15	15			25	75		26	25	
STA 80+22	14	15		24		73		26	24	
STA 80+51	9	17		17		69		30	17	
STA 80+79	7	15	12			59		26		
STA 80+96	9	15		15		63		26	15	
STA 81+94	27	15			45	99	9	26	45	
STA 83+17	6	15	10			57		26		
STA 83+68	6	15	10			57		26		
STA 83+96	6	15	10			57		26		
STA 84+39	6	15	10			57		26		
STA 84+94	27	15			45	99	9	26	45	
STA 86+01	6	15	10			57		26		
STA 86+96	15	15			25	75		26	25	
STA 87+33	7	15	12			59		26		
STA 87+93	15	15			25	75		26	25	
STA 88+95	27	15			45	99	9	26	45	
STA 90+00	12	15		20		69		26	20	
STA 90+23	39	15			65	123	13	26	65	
STA 91+72	25	15			42	95	8	26	42	
STA 94+99	6	15	10			57		26		
STA 96+35	21	15			35	87	7	26	35	
STA 97+44	15	15			23	75		26	23	
STA 97+83	12	15		20		69		26	20	
STA 98+38	21	15			35	87	7	26	35	
IL 1 NB										
STA 101+38	15	17			29	81		30	29	
STA 98+40	15	15			25	75		26	25	
STA 97+95	6	15	10			57		26		
STA 97+55	6	15	10			57		26		
STA 97+28	6	15	10			57		26		
STA 96+46	9	23		23		87		42	23	TURN LANE
STA 95+47	9	24		24		90		44	24	TURN LANE
STA 94+49	8	26		24		94		48	24	TURN LANE
STA 93+35	9	26			26	96		48	26	TURN LANE
STA 91+94	12	21			28	87		38	28	
STA 90+97	10	15		17		65		26	17	
STA 89+92	18	15			30	81		26	30	
STA 88+46	12	15		20		69		26	20	
STA 87+86	21	15			35	87	7	26	35	
STA 87+62	6	15	10			57		26		
STA 86+94	15	15			25	75		26	25	

MODEL: \$MODELNAME\$
FILE NAME: \$FILE\$

USER NAME = \$USERS	DESIGNED -	REVISED -
	DRAWN -	REVISED -
PLOT SCALE = \$SCALE\$	CHECKED -	REVISED -
PLOT DATE = \$DATES	DATE -	REVISED -

**STATE OF ILLINOIS
DEPARTMENT OF TRANSPORTATION**

PATCHING SCHEDULE

SCALING SCALE SHEET 7 OF 12 SHEETS STA. TO STA.

F.A.P. RTE.	SECTION	COUNTY	TOTAL SHEETS	SHEET NO.
332	D9 PATCH 2023-1	WHITE	12	7
CONTRACT NO. 78974				
ILLINOIS FED. AID PROJECT				

CLASS B PATCHING SCHEDULE

LOCATION	LENGTH	WIDTH	CLASS B, TY II, 14"	CLASS B, TY III, 14"	CLASS B, TY IV, 14"	SAW CUTS	TIE BARS	DOWEL BARS	WELDED WIRE REINF.	COMMENTS
	FOOT	FOOT	SQYD	SQYD	SQYD	FOOT	EACH	EACH	SQ YD	
IL 1 NB										
STA 85+94	15	15			25	75		26	25	
STA 84+93	6	15	10			57		26		
STA 84+45	15	15			25	75		26	25	
STA 83+93	18	15			30	81		26	30	
STA 82+96	9	23		23		87		42	23	TURN LANE
STA 82+59	6	15	10			57		26		
STA 81+97	9	26			26	96		48	26	TURN LANE
STA 80+97	9	26			26	96		48	26	TURN LANE
STA 80+31	6	26		18		90		48	18	TURN LANE
STA 79+07	6	26		18		90		48	18	TURN LANE
STA 78+17	15	15			25	75		26	25	
STA 77+92	12	15		20		69		26	20	
STA 77+04	6	15	10			57		26		
STA 76+86	6	15	10			57		26		
STA 75+92	15	15			25	75		26	25	
STA 75+07	6	15	10			57		26		
STA 74+01	8	15		14		61		26	14	
I-64 WB RAMP										
RAMP A	36	30			120	162	12	56	120	
RAMP A	20	26			28	118	7	48	28	
RAMP A	30	17			27	111	10	30	27	
RAMP B	49	16			87	146	16	28	87	
RAMP B	18	16			32	84		28	32	
RAMP B	28	26			81	134	9	48	81	
I-64 EB RAMP										
RAMP C	51	17			97	153	17	30	97	
RAMP C	10	17			19	71		30	19	
RAMP D	31	18			62	116	10	32	62	
RAMP D	20	18			40	94	7	32	40	
RAMP D	20	18			40	94	7	32	40	
RAMP D	20	18			40	94	7	32	40	
TOTALS			213	359	1556	6316	189	2368	1915	

MODEL: \$MODELNAME\$
FILE NAME: \$FILE\$

USER NAME = \$USERS	DESIGNED -	REVISED -
	DRAWN -	REVISED -
PLOT SCALE = \$SCALE\$	CHECKED -	REVISED -
PLOT DATE = \$DATES	DATE -	REVISED -

**STATE OF ILLINOIS
DEPARTMENT OF TRANSPORTATION**

PATCHING SCHEDULE

SCALE NO SCALE SHEET 8 OF 12 SHEETS STA. TO STA.

F.A.P. RTE.	SECTION	COUNTY	TOTAL SHEETS	SHEET NO.
332	D9 PATCH 2023-1	WHITE	12	8
CONTRACT NO. 78974				
ILLINOIS FED. AID PROJECT				

PAVEMENT MARKING SCHEDULE

LOCATION STATION TO STATION	FOR INFORMATION		PAINT PAVEMENT MARKING				RAISED REFLECTIVE PAVEMENT MARKER	RAISED REFLECTIVE PAVEMENT MARKER REMOVAL	COMMENTS
	ROADWAY LENGTH	FOOT	LINE - 6" WHITE	LINE - 6" YELLOW	LINE - 24" WHITE	LETTERS AND SYMBOLS			
			SOLID	SOLID	SOLID	SQ FOOT			
FOOT	FOOT	FOOT	FOOT	FOOT	SQ FOOT	EACH	EACH		
WHITE COUNTY									
STA 72+85.00 TO STA 77+43.00		458.0	916	916			6	6	
STA 77+43.00 TO STA 78+24.00		81.0		162			2	2	
STA 78+96.00 TO STA 82+13.00		317.0		634			4	4	
STA 82+13.00 TO STA 90+88.00		875.0	1750	1750			11	11	
STA 79+50.00 TO STA 82+00.00		250.0	250		37				LEFT TURN LANE ONLY LEFT ARROW
STA 90+88.00 TO STA 91+66.00		78.0	156	156			1	1	
STA 92+37.00 TO STA 93+69.00		132.0	264	264			2	2	
STA 93+00.00 TO STA 95+50.00		250.0	250		37				LEFT TURN LANE ONLY LEFT ARROW
STA 93+69.00 TO STA 98+46.00		477.0	954	954			6	6	
RAMP A									
STA 68+67.00 TO STA 69+98.00		131.0							
RAMP B									
STA 251+87.00 TO STA 253+19.00		132.0							
STA 253+00.00				50	32				STOP LINE TURN ARROW
RAMP C									
STA 301+77.00 TO STA 303+07.00		130.0							
RAMP D									
STA 428+17.00 TO STA 429+47.00		130.0							
STA 429+50.00				50	32				STOP LINE TURN ARROW
TOTAL			9376	100	138		32	32	

MODEL: Pavement_Schedule_1 (Sheet)
 FILE NAME: \\p1160000\p1160000\Projects\78974\CD\DATA\CAD\Drawings\DWG\78974-SMS-Schedule.dgn

USER NAME = Dacoda.Blockley	DESIGNED -	REVISED -
	DRAWN -	REVISED -
PLOT SCALE = 0.16666633 1/16 in.	CHECKED -	REVISED -
PLOT DATE = 10/12/2022	DATE -	REVISED -

**STATE OF ILLINOIS
DEPARTMENT OF TRANSPORTATION**

PAVEMENT MARKING SCHEDULE

SCALING SCALE SHEET 9 OF 12 SHEETS STA. TO STA.

F.A.P. RTE.	SECTION	COUNTY	TOTAL SHEETS	SHEET NO.
332	D9 PATCH 2023-1	WHITE	12	9
CONTRACT NO. 78974				
ILLINOIS FED. AID PROJECT				

PAVEMENT SCHEDULE

LOCATION STA TO STA	FOR INFORMATION		HOT-MIX ASPHALT SURFACE COURSE, MIX D, N90	HOT-MIX ASPHALT SURFACE REMOVAL, 1 1/2"	TEMPORARY RAMPS	LONGITUDINAL JOINT SEALANT	AGGREGATE WEDGE SHOULDER, TYPE B	MATERIAL TRANSFER DEVICE	BITUMUNOUS MATERIALS (TACK COAT)	COMMENTS
	LENGTH	WIDTH								
	FOOT	FOOT								
WHITE COUNTY										
RAMP A										
STA 68+67 .	TO STA 70+17 .	150.0	25	50.4	600.0	14.0		50.4	270.0	
ROUTE 1										
STA 72+85 .			28			16.0				
STA 72+85 .	TO STA 78+86 .	601.0	28	157.8	1,869.8		11.4	157.8	841.4	
STA 78+86 .	TO STA 84+60 .	574.0	40	215.0	2,551.1		5.3	215.0	1148.0	
STA 79+00 .	TO STA 81+50 .	250.0				250.0	2.3			LEFT TURN LANE
STA 84+60 .	TO STA 92+30 .	770.0	28	202.1	2,395.6		7.1	202.1	1078.0	
STA 92+30 .	TO STA 98+04 .	574.0	40	215.0	2,551.1		5.3	215.0	1148.0	
STA 92+50 .	TO STA 95+00 .	250.0				250.0	2.3			LEFT TURN LANE
STA 98+04 .	TO STA 98+46 .	42.0	26	10.2	121.3		0.4	10.2	54.6	
STA 98+04 .			26			15.0				
RAMP B										
STA 248+65 .	TO STA 250+11 .	146.0	25	53.4	636.0	14.0		53.4	286.2	
RAMP C										
STA 301+77 .	TO STA 303+07 .	130.0	25	46.2	550.0	14.0		46.2	247.5	
RAMP D										
STA 423+17 .	TO STA 424+50 .	133.0	25	50.4	600.0	14.0		50.4	270.0	
TOTAL				1001	11875	87	500	35	1001	5344

MODEL: Pavement Schedule (Sheet)
 FILE NAME: p:\illobse\dot\work\pmd\dot\documents\dot\Office\District 9\PRD Projects\78974\CAD\data\CAD\sheet\0978974-SMS-Schedule.dgn

USER NAME = Dacoda,Blockley	DESIGNED -	REVISED -	
	DRAWN -	REVISED -	
PLOT SCALE = 0.16666633 1/16 in.	CHECKED -	REVISED -	
PLOT DATE = 10/12/2022	DATE -	REVISED -	

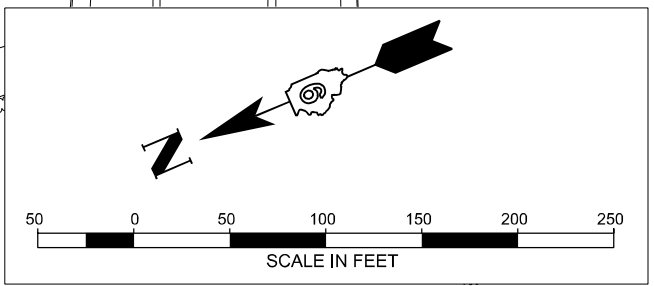
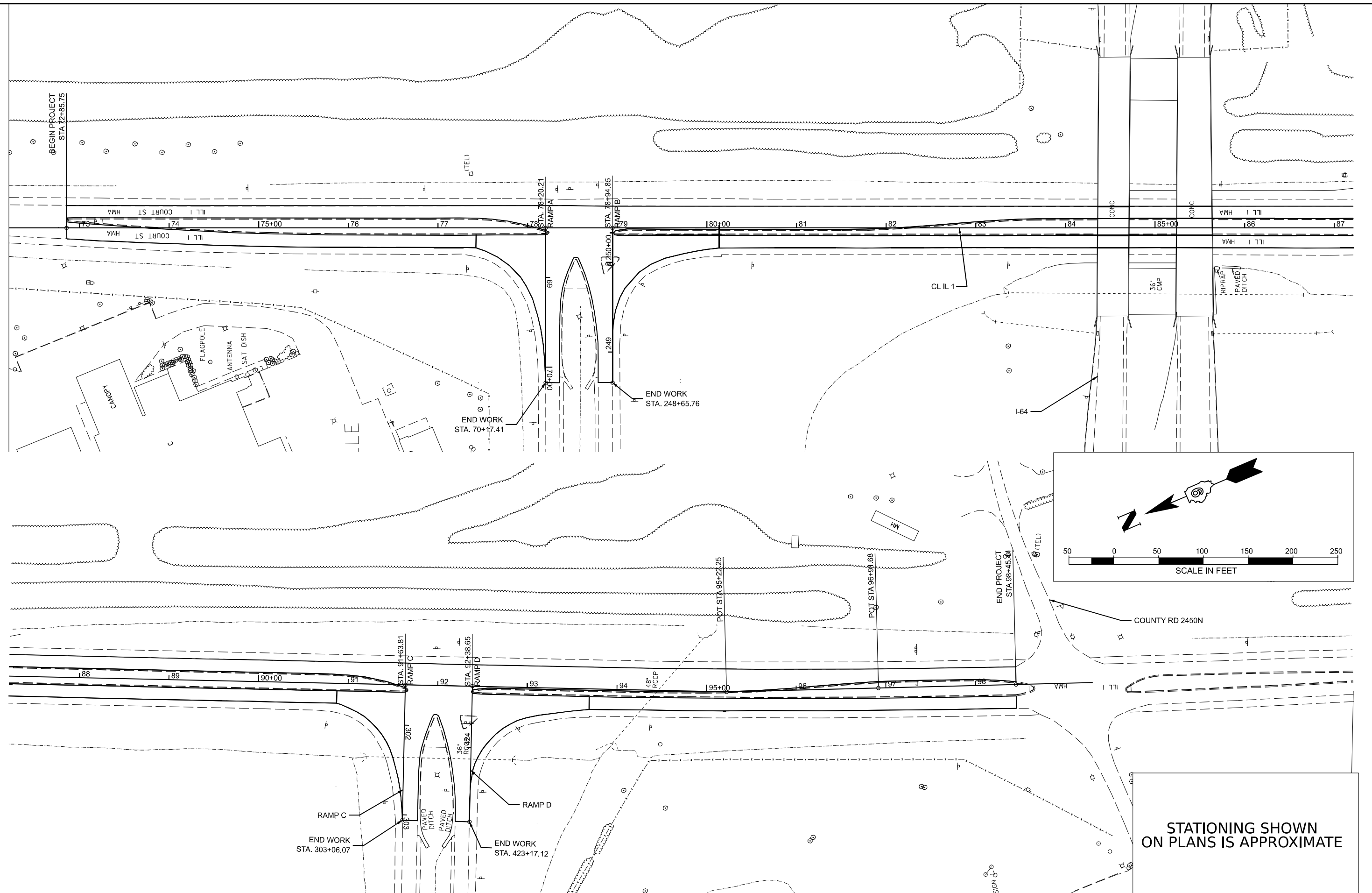
**STATE OF ILLINOIS
DEPARTMENT OF TRANSPORTATION**

PAVEMENT SCHEDULE

SCALING SCALE SHEET 10 OF 12 SHEETS STA. TO STA.

F.A.P. RTE.	SECTION	COUNTY	TOTAL SHEETS	SHEET NO.
332	D9 PATCH 2023-1	WHITE	12	10
		78974		
ILLINOIS FED. AID PROJECT				

MODEL: I:\F-Plan\15191.dwg
 FILE NAME: P:\Bids\2023\15191\15191.dwg



**STATIONING SHOWN
ON PLANS IS APPROXIMATE**

USER NAME = Dacoda.Bloody	DESIGNED -	REVISED -
PLOT SCALE = 0.16666633' / in.	DRAWN -	REVISED -
PLOT DATE = 10/12/2022	CHECKED -	REVISED -
	DATE -	REVISED -

**STATE OF ILLINOIS
DEPARTMENT OF TRANSPORTATION**

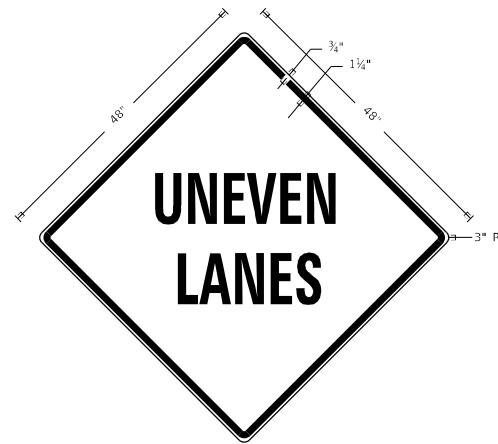
PLAN SHEET

SCALE: 1"=50' SHEET 11 OF 12 SHEETS STA. TO STA.

F.A.P. RTE.	SECTION	COUNTY	TOTAL SHEETS	SHEET NO.
332	D9 PATCH 2023-1	WHITE	12	11
CONTRACT NO. 78974				
ILLINOIS FED. AID PROJECT				

UNEVEN LANES SIGN

W8-11 (48" x 48")



COLORS:

LEGEND AND BORDER - BLACK NON-REFLECTORIZED
BACKGROUND - ORANGE REFLECTORIZED

NOTE: PRIOR TO ALLOWING TRAFFIC ON ANY PORTION OF THE ROADWAY THAT HAS BEEN COLDMILLED OR BEFORE RESURFACING OPERATIONS BEGIN, THE CONTRACTOR SHALL HAVE ERECTED "UNEVEN PAVEMENT" SIGNS THAT CONFORM TO THE ABOVE DETAILS. A MINIMUM OF ONE SIGN AT EACH END OF THE IMPROVEMENT WILL BE REQUIRED. THE CONTRACTOR SHALL MAINTAIN THE "UNEVEN PAVEMENT" SIGNS UNTIL THE RESURFACING OPERATIONS ARE COMPLETED.

IF AT ANY TIME THE SIGNS ARE IN PLACE BUT NOT APPLICABLE, THEY SHALL BE TURNED FROM THE VIEW OF MOTORISTS OR COVERED AS DIRECTED BY THE ENGINEER.

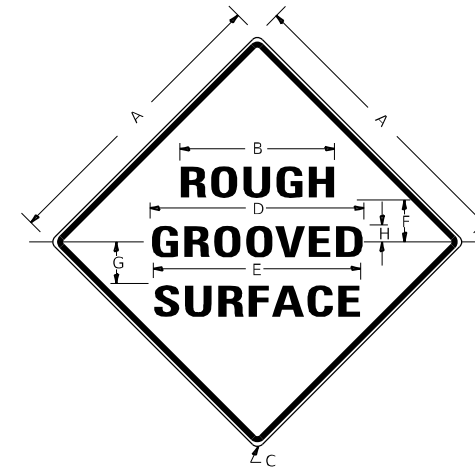
THE COST OF FURNISHING, ERECTING, MAINTAINING, AND REMOVING THE REQUIRED SIGNS SHALL BE INCLUDED IN THE CONTRACT.

REVISIONS

DRAWN	2-15-89
REVISED	4-06-93
REDESIGNED	7-23-04
RESIZED	5-08-08
REVIEWED	5-17-13
REVISED	10-21-21

STD. 9-41

ILLINOIS STANDARD



COLORS:

LEGEND AND BORDER- BLACK NON-REFLECTORIZED
BACKGROUND- ORANGE REFLECTORIZED

SIGN SIZE	DIMENSIONS							
	A	B	C	D	E	F	G	H
48X48	48.0	24.1	3.0	34.0	33.0	6.0	13.0	3.5

SIGN SIZE	SERIES LINES			MAR- GIN	BOR- DER	BLANK STD.
	1	2	3			
48X48	7C	7C	7C	0.8	1.2	B4-48D

ALL DIMENSIONS IN INCHES

NOTES:

PRIOR TO ALLOWING TRAFFIC ON ANY PORTION OF THE ROADWAY THAT HAS BEEN COLDMILLED, THE CONTRACTOR SHALL HAVE ERECTED "ROUGH GROOVED SURFACE" SIGNS THAT CONFORM TO THE ABOVE DETAILS. A MINIMUM OF ONE SIGN AT EACH END OF THE IMPROVEMENT WILL BE REQUIRED. THE CONTRACTOR SHALL MAINTAIN THE "ROUGH GROOVED SURFACE" SIGNS UNTIL THE COLDMILLED SURFACE IS COVERED WITH LEVELING BINDER OR SURFACE COURSE.

IF AT ANY TIME THE SIGNS ARE IN PLACE BUT NOT APPLICABLE, THEY SHALL BE TURNED FROM THE VIEW OF MOTORISTS OR COVERED AS DIRECTED BY THE ENGINEER.

THE COST OF FURNISHING, ERECTING, MAINTAINING, AND REMOVING THE REQUIRED SIGNS SHALL BE INCLUDED IN THE CONTRACT.

REVISIONS

REDRAWN	2-15-89
REVISED	4-6-93
REVISED	3-27-08
REVIEWED	5-17-13
REVISED	10-21-21

STD. 9-39

MODEL: DISTRICT STANDARDS (Sheet)
FILE NAME: p:\illinois\standards\documents\idot\office\District 9\RD Projects\78974\CADData\CADsheets\0978974-SHS-DistrictStd.dgn

USER NAME = Dacoda.Blockley	DESIGNED -	REVISED -
	DRAWN -	REVISED -
PLOT SCALE = 0.16666633 1/ in.	CHECKED -	REVISED -
PLOT DATE = 10/12/2022	DATE -	REVISED -

STATE OF ILLINOIS
DEPARTMENT OF TRANSPORTATION

DISTRICT STANDARDS

SCALE NO SCALE SHEET 12 OF 12 SHEETS STA. TO STA.

F.A.P. RTE. 332	SECTION D9 PATCH 2023-1	COUNTY WHITE	TOTAL SHEETS 12	SHEET NO. 12
CONTRACT NO. 78974				
ILLINOIS FED. AID PROJECT				