

PLAN	SURVEYED	BY	DATE
	PLOTTED		
NOTE BOOK NO.	ALIGNMENT CHECKED		
	CADD FILE NAME		

PROFILE	SURVEYED	BY	DATE
	PLOTTED		
NOTE BOOK NO.	GRADES CHECKED		
	STRUCTURE NOTATIONS CHECKED		

SPECIALTY ITEM	SPECIAL PROVISION	CODE NO.	ITEM	UNIT	TOTAL QUANTITY	CONSTRUCTION CODE			
						70% FEDERAL 15% STATE 15% LOCAL			100% LOCAL
						0005 ROADWAY	0021 SAFETY SIGNALS	0042 TRAINEES	NON- PARTICIPATING
X		56105100	WATER VALVES 10"	EACH	1				1
X		56105200	WATER VALVES 12"	EACH	2				2
X		56400500	FIRE HYDRANTS TO BE REMOVED	EACH	1	1			
X		56400820	FIRE HYDRANT WITH AUXILLARY VALVE AND VALVE BOX	EACH	1	1			
		60200205	CATCH BASINS, TYPE A, 4'-DIAMETER, TYPE 1 FRAME, CLOSED LID	EACH	1	1			
		60201340	CATCH BASINS, TYPE A, 4'-DIAMETER, TYPE 24 FRAME AND GRATE	EACH	2	2			
		60208240	CATCH BASINS, TYPE C, TYPE 24 FRAME AND GRATE	EACH	6	6			
		60218400	MANHOLES, TYPE A, 4'-DIAMETER, TYPE 1 FRAME, CLOSED LID	EACH	3	3			
		60223800	MANHOLES, TYPE A, 6'-DIAMETER, TYPE 1 FRAME, CLOSED LID	EACH	1	1			
		60236200	INLETS, TYPE A, TYPE 8 GRATE	EACH	1	1			
		60236800	INLETS, TYPE A, TYPE 11 FRAME AND GRATE	EACH	1	1			
		60237470	INLETS, TYPE A, TYPE 24 FRAME AND GRATE	EACH	8	8			
		60248900	VALVE VAULTS, TYPE A, 5'-DIAMETER, TYPE 1 FRAME, CLOSED LID	EACH	1				1
		60404800	FRAMES AND GRATES, TYPE 11	EACH	1	1			
		60404950	FRAMES AND GRATES, TYPE 24	EACH	1	1			
		60406100	FRAMES AND LIDS, TYPE 1, CLOSED LID	EACH	26	26			
		60500040	REMOVING MANHOLES	EACH	2	2			
		60500050	REMOVING CATCH BASINS	EACH	6	6			

MODEL: SPODELNAME\$  
FILE NAME: ...3263 SUN.dgn



Two Pierce Place, Suite 1400  
Itasca, Illinois 60143  
Tel: 630.773.3900 Fax: 630.773.3975  
www.civiltechinc.com

DESIGNED -	JMG	REVISED -	1/19/2023
DRAWN -	JRR	REVISED -	2/22/2023
CHECKED -	KRK	REVISED -	
DATE -	11/28/2022	REVISED -	

STATE OF ILLINOIS  
DEPARTMENT OF TRANSPORTATION

US RTE 41 (SKOKIE ROAD) AND LAKE AVENUE  
SUMMARY OF QUANTITIES

SHEET 4 OF 11 SHEETS

FAU RTE	SECTION	COUNTY	TOTAL SHEETS	SHEET NO
350/1292	19-00203-02-CH	COOK	99	7
CONTRACT NO 61116				
ILLINOIS FED AID PROJECT				

PLAN	SURVEYED	BY	DATE
	PLOTTED		
NOTE BOOK NO.	ALIGNMENT CHECKED		
	CADD FILE NAME		

PROFILE	SURVEYED	BY	DATE
	PLOTTED		
NOTE BOOK NO.	GRADES CHECKED		
	STRUCTURE NOTATIONS CHECKED		

SPECIALTY ITEM	SPECIAL PROVISION	CODE NO.	ITEM	UNIT	TOTAL QUANTITY	CONSTRUCTION CODE			
						70% FEDERAL 15% STATE 15% LOCAL			100% LOCAL
						0005 ROADWAY	0021 SAFETY SIGNALS	0042 TRAINEES	NON- PARTICIPATING
X	X	X1400367	PEDESTRIAN SIGNAL POST, 10 FT.	EACH	2		2		
X	X	X1400388	VIDEO VEHICLE DETECTION SYSTEM, SINGLE APPROACH	EACH	2		2		
	X	X2080250	TRENCH BACKFILL, SPECIAL	CU YD	28	28			
	X	X2130010	EXPLORATION TRENCH, SPECIAL	FOOT	100	100			
	X	X4022000	TEMPORARY ACCESS (COMMERCIAL ENTRANCE)	EACH	8	8			
	X	X4023000	TEMPORARY ACCESS (ROAD)	EACH	3	3			
	X	X4240800	DETECTABLE WARNINGS (SPECIAL)	SQ FT	154	154			
	X	X4401198	HOT-MIX ASPHALT SURFACE REMOVAL, VARIABLE DEPTH	SQ YD	82	82			
	X	X4421790	CLASS D PATCHES, TYPE II, 12 INCH (SPECIAL)	SQ YD	13	13			
	X	X5620106	WATER SERVICE RECONNECTIONS	EACH	3				3
	X	X5620112	WATER SERVICE CONNECTION	EACH	2				2
	X	X6030310	FRAMES AND LIDS TO BE ADJUSTED (SPECIAL)	EACH	15	15			
	X	X6700407	ENGINEER'S FIELD OFFICE, TYPE A (D1)	CAL MO	4	4			
	X	X7810301	RECESSED REFLECTIVE PAVEMENT MARKER (HMA)	EACH	106	106			
X	X	X8620200	UNINTERRUPTABLE POWER SUPPLY, SPECIAL	EACH	1		1		
X	X	X8710024	FIBER OPTIC CABLE IN CONDUIT, NO. 62.5/125, MM12F SM24F	FOOT	3,609		3,609		
X	X	X8760200	ACCESSIBLE PEDESTRIAN SIGNALS	EACH	8		8		
X	X	X8780012	CONCRETE FOUNDATION, TYPE A 12-INCH DIAMETER	FOOT	8		8		

MODEL: SPODELNAMEES  
FILE NAME: ...35653\_SUM.dgn



Two Pierce Place, Suite 1400  
Itasca, Illinois 60143  
Tel: 630.773.3900 Fax: 630.773.3975  
www.civiltechinc.com

DESIGNED -	JMG	REVISED -	12/23/2022
DRAWN -	JRR	REVISED -	1/19/2023
CHECKED -	KRK	REVISED -	2/22/2023
DATE -	11/28/2022	REVISED -	

STATE OF ILLINOIS  
DEPARTMENT OF TRANSPORTATION

US RTE 41 (SKOKIE ROAD) AND LAKE AVENUE  
SUMMARY OF QUANTITIES

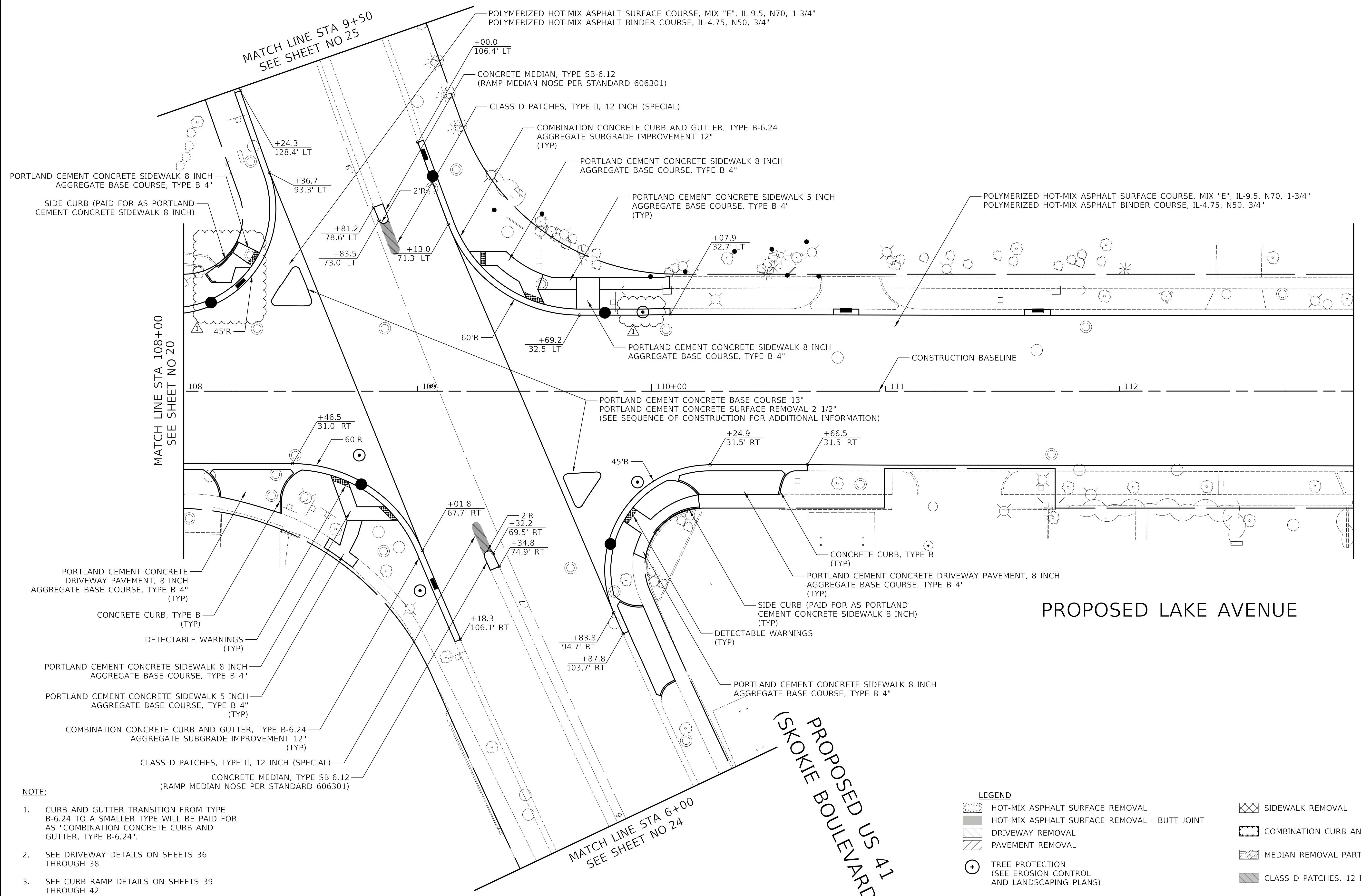
SHEET 10 OF 11 SHEETS

FAU RTE	SECTION	COUNTY	TOTAL SHEETS	SHEET NO
350/1292	19-00203-02-CH	COOK	99	13
CONTRACT NO 61116				
ILLINOIS FED AID PROJECT				



DATE	
BY	
PLAN	
NO.	
DATE	
BY	
PROFILE	
NO.	

DATE	
BY	
PROFILE	
NO.	
DATE	
BY	
PLAN	
NO.	



- NOTE:**
- CURB AND GUTTER TRANSITION FROM TYPE B-6.24 TO A SMALLER TYPE WILL BE PAID FOR AS "COMBINATION CONCRETE CURB AND GUTTER, TYPE B-6.24".
  - SEE DRIVEWAY DETAILS ON SHEETS 36 THROUGH 38
  - SEE CURB RAMP DETAILS ON SHEETS 39 THROUGH 42

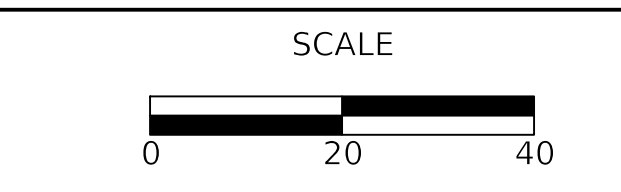
**LEGEND**

	HOT-MIX ASPHALT SURFACE REMOVAL		SIDEWALK REMOVAL
	HOT-MIX ASPHALT SURFACE REMOVAL - BUTT JOINT		COMBINATION CURB AND GUTTER REMOVAL
	DRIVEWAY REMOVAL		MEDIAN REMOVAL PARTIAL DEPTH
	PAVEMENT REMOVAL		CLASS D PATCHES, 12 INCH (SPECIAL)
	TREE PROTECTION (SEE EROSION CONTROL AND LANDSCAPING PLANS)		

**CIVILTECH**  
 Two Pierce Place, Suite 1400  
 Itasca, Illinois 60143  
 Tel: 630.773.3900 Fax: 630.773.3975  
 www.civiltechinc.com

DESIGNED -	IMG	REVISED -	12/23/2022
DRAWN -	JRR	REVISED -	1/19/2023
CHECKED -	KRK	REVISED -	2/22/2023
DATE -	11/28/2022	REVISED -	

**STATE OF ILLINOIS  
 DEPARTMENT OF TRANSPORTATION**



**US RTE 41 (SKOKIE ROAD) AND LAKE AVENUE  
 ROADWAY PLAN**

SHEET 4 OF 7 SHEETS STA 108+00.00 TO STA 113+00.00

FAU RTE	SECTION	COUNTY	TOTAL SHEETS	SHEET NO
350/1292	19-00203-02-CH	COOK	99	22
CONTRACT NO 61116				
ILLINOIS FED AID PROJECT				



PLAN	SURVEYED	DATE
	PLOTTED	
	ALIGNMENT CHECKED	
	NOTE BOOK	
	NO.	

PROFILE	SURVEYED	DATE
	PLOTTED	
	GRADES CHECKED	
	NOTE BOOK	
	NO.	

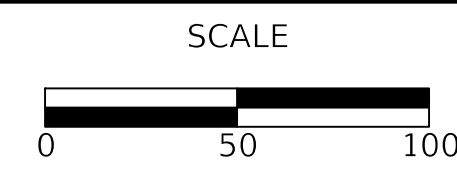
MODEL: S:\MODEL\NAMES  
FILE NAME: ...35053\_EC\_Landscaping.dgn



Two Pierce Place, Suite 1400  
Itasca, Illinois 60143  
Tel: 630.773.3900 Fax: 630.773.3975  
www.civiltechinc.com

DESIGNED	-	JMG	REVISED	-	12/23/2022
DRAWN	-	JRR	REVISED	-	1/19/2023
CHECKED	-	KRK	REVISED	-	2/22/2023
DATE	-	11/28/2022	REVISED	-	

STATE OF ILLINOIS  
DEPARTMENT OF TRANSPORTATION



US RTE 41 (SKOKIE ROAD) AND LAKE AVENUE  
EROSION CONTROL AND LANDSCAPING PLANS

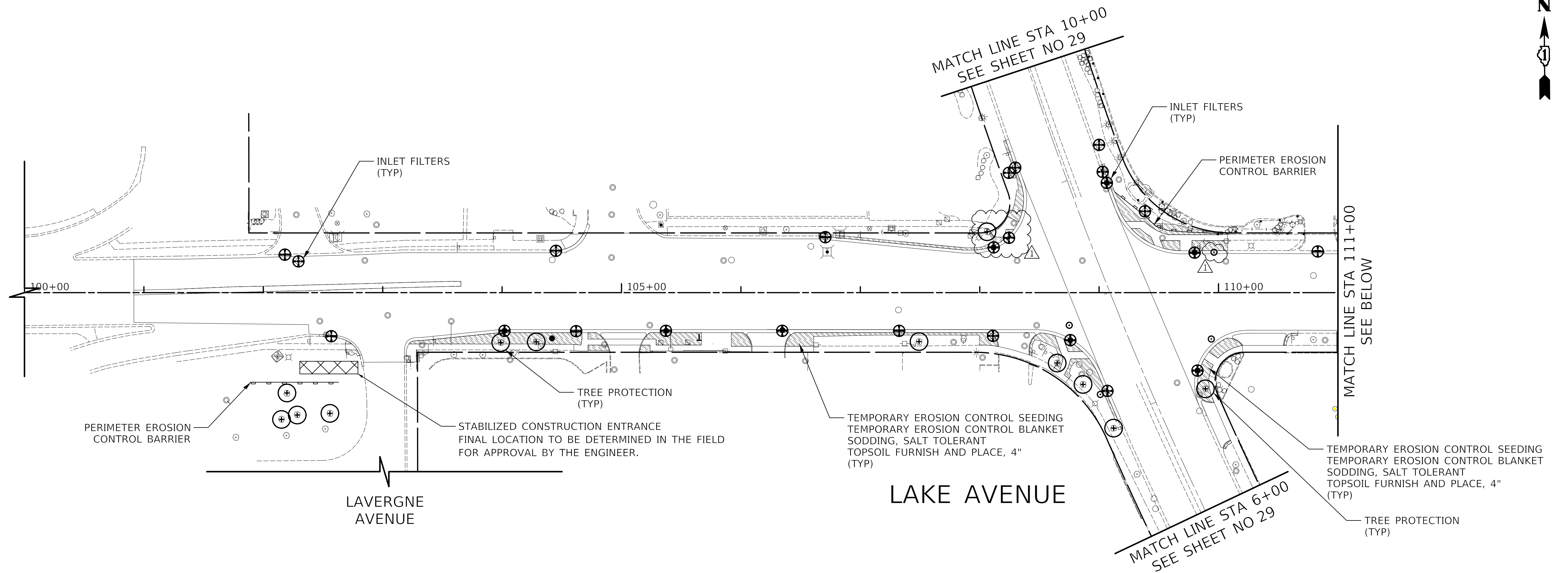
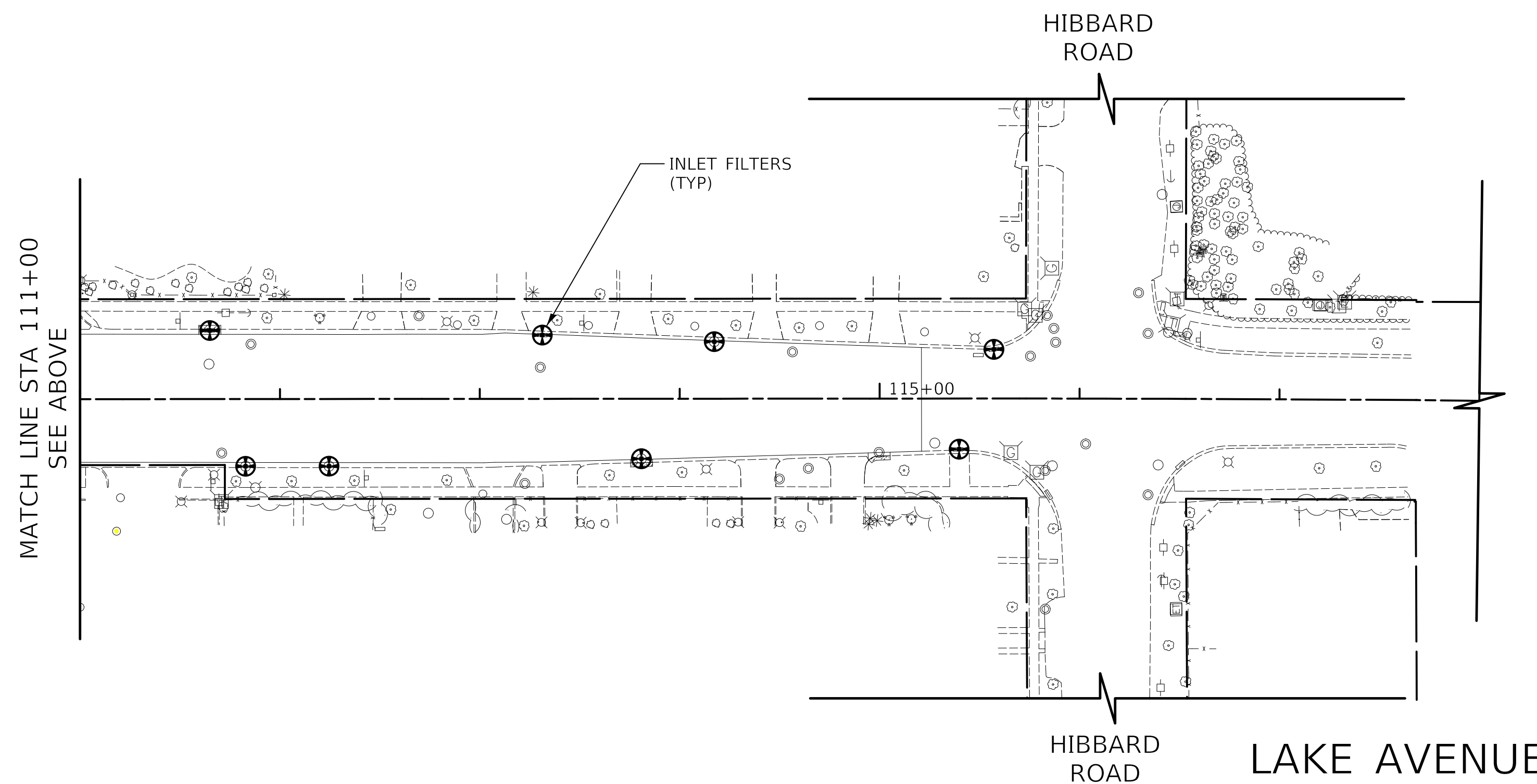
SHEET 1 OF 2 SHEETS STA 100+00.00 TO STA 118+00.00

FAU RTE	SECTION	COUNTY	TOTAL SHEETS	SHEET NO
350/1292	19-00203-02-CH	COOK	99	28
CONTRACT NO 61J16				
ILLINOIS FED AID PROJECT				

- NOTE:
- CONTRACTOR SHALL CREATE A SPADE EDGE AT SODDED AREA ABUTTING THE MULCH RING OF EACH TREE.
  - CONTRACTOR SHALL NOTIFY THE ENGINEER TO SCHEDULE A WALK THROUGH 48 HOURS PRIOR TO EXECUTION OF ANY TREES RECEIVING TREE TRUNK PROTECTION, TREE PRUNING AND/OR TREE ROOT PRUNING. WORK SHALL BE DIRECTED BY THE ENGINEER.

LEGEND

- EXISTING TREES
- TEMPORARY EROSION CONTROL SEEDING  
TEMPORARY EROSION CONTROL BLANKET  
SODDING, SALT TOLERANT  
TOPSOIL FURNISH AND PLACE, 4"
- INLET FILTERS
- TREE PROTECTION: PAID BY THE FOLLOWING  
TREE TRUNK PROTECTION,  
TREE PRUNING, AND/OR  
TREE ROOT PRUNING
- PROPOSED PERIMETER EROSION CONTROL  
BARRIER



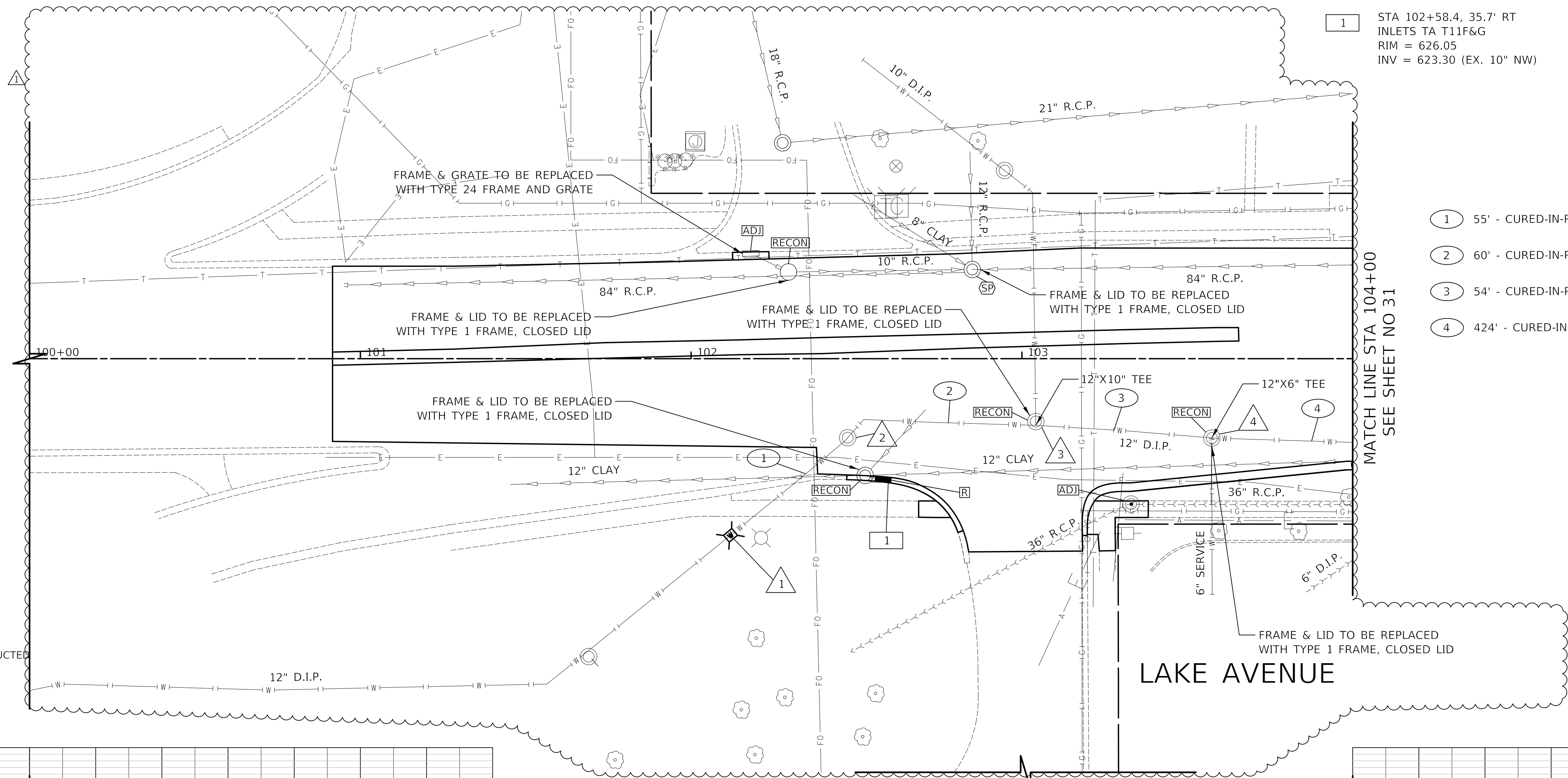
PLAN	SURVEYED	DATE
	PLOTTED	BY
	ALIGNMENT CHECKED	
	NOTE BOOK	
	NO.	
	CADD FILE NAME	

PROFILE	SURVEYED	DATE
	PLOTTED	BY
	GRADES CHECKED	
	NOTE BOOK	
	NO.	
	STRUCTURE NOTATION CHPKD	

- 1 STA 102+11.9, 53.4' RT  
VV TA 5 DIA T1F CL  
WATER VALVES 12"  
RIM = 625.32
- 2 STA 102+47.3, 23.9' RT  
FILLING VALVE VAULTS
- 3 STA 103+04.2, 19.0' RT  
WATER SERVICE CONNECTION  
REMOVE EXISTING WATER VALVE  
WATER VALVES 10"
- 4 STA 103+57.4, 24.0' RT  
WATER SERVICE CONNECTION  
REMOVE EXISTING WATER VALVE  
WATER VALVES 6"

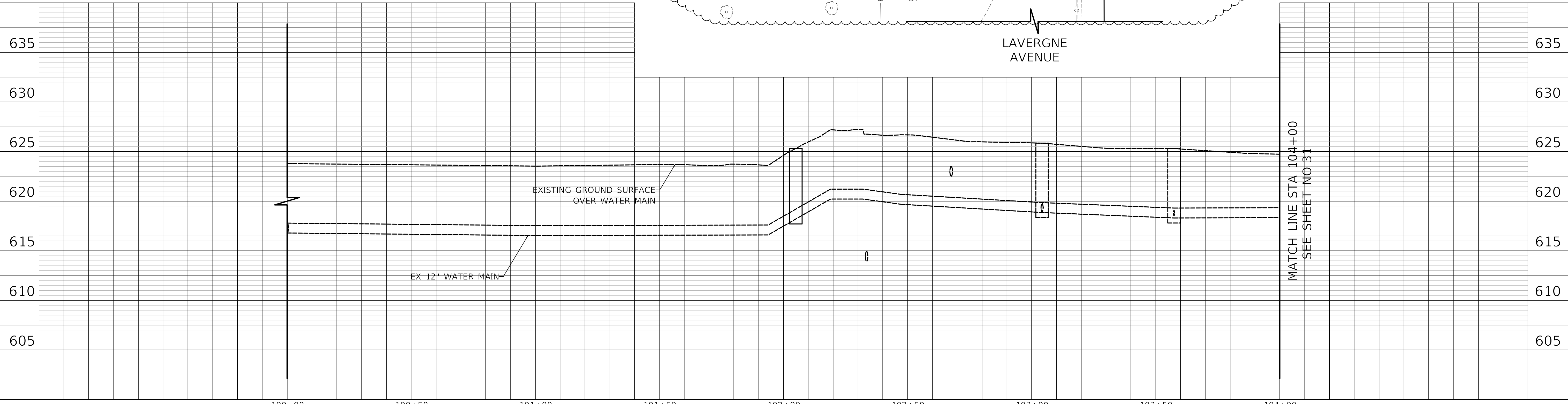
- 1 STA 102+58.4, 35.7' RT  
INLETS TA T1F&G  
RIM = 626.05  
INV = 623.30 (EX. 10" NW)

- 1 55' - CURED-IN-PLACE PIPE (CIPP), 12"
- 2 60' - CURED-IN-PLACE PIPE (CIPP), 12"
- 3 54' - CURED-IN-PLACE PIPE (CIPP), 12"
- 4 424' - CURED-IN-PLACE PIPE (CIPP), 12"



**LEGEND**

<b>RECON</b>	DRAINAGE AND UTILITY STRUCTURE TO BE RECONSTRUCTED
<b>ADJ</b>	DRAINAGE AND UTILITY STRUCTURE TO BE ADJUSTED
<b>R</b>	DRAINAGE AND UTILITY STRUCTURE TO BE REMOVED
<b>SP</b>	FRAMES AND LIDS TO BE ADJUSTED (SPECIAL)

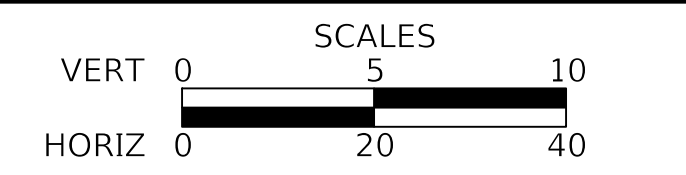


MODEL: SPODELNAMRES  
FILE NAME: ...3565.DWG

**CIVILTECH**  
Two Pierce Place, Suite 1400  
Itasca, Illinois 60143  
Tel: 630.773.3900 Fax: 630.773.3975  
www.civiltechinc.com

DESIGNED -	JMG	REVISED -	12/23/2022
DRAWN -	JRR	REVISED -	1/19/2023
CHECKED -	KRK	REVISED -	2/22/2023
DATE -	11/28/2022	REVISED -	

**STATE OF ILLINOIS  
DEPARTMENT OF TRANSPORTATION**



**US RTE 41 (SKOKIE ROAD) AND LAKE AVENUE  
DRAINAGE AND UTILITIES**

SHEET 1 OF 5 SHEETS STA 100+00.00 TO STA 104+00.00

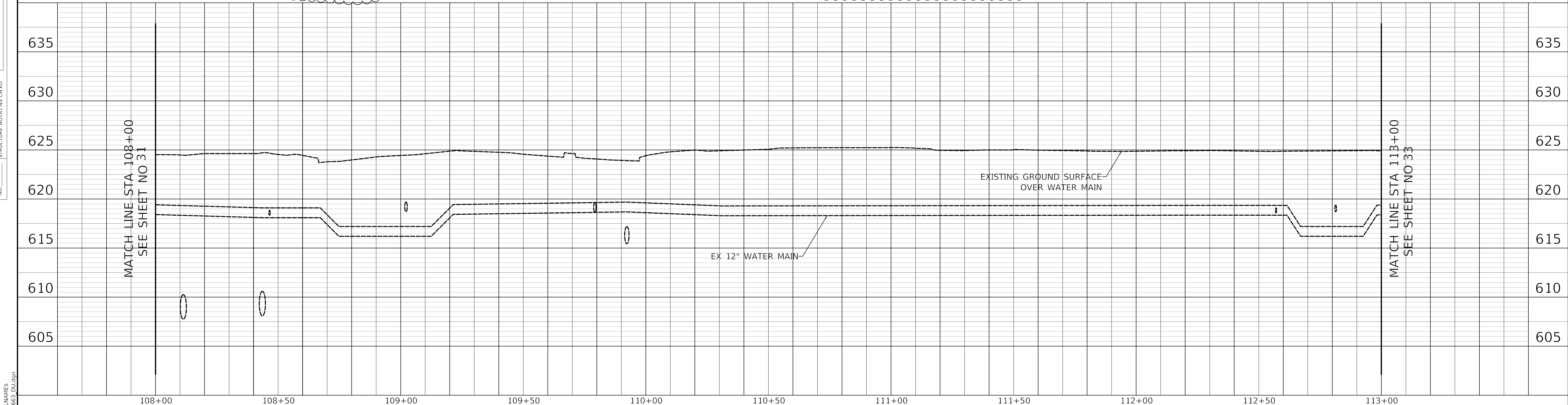
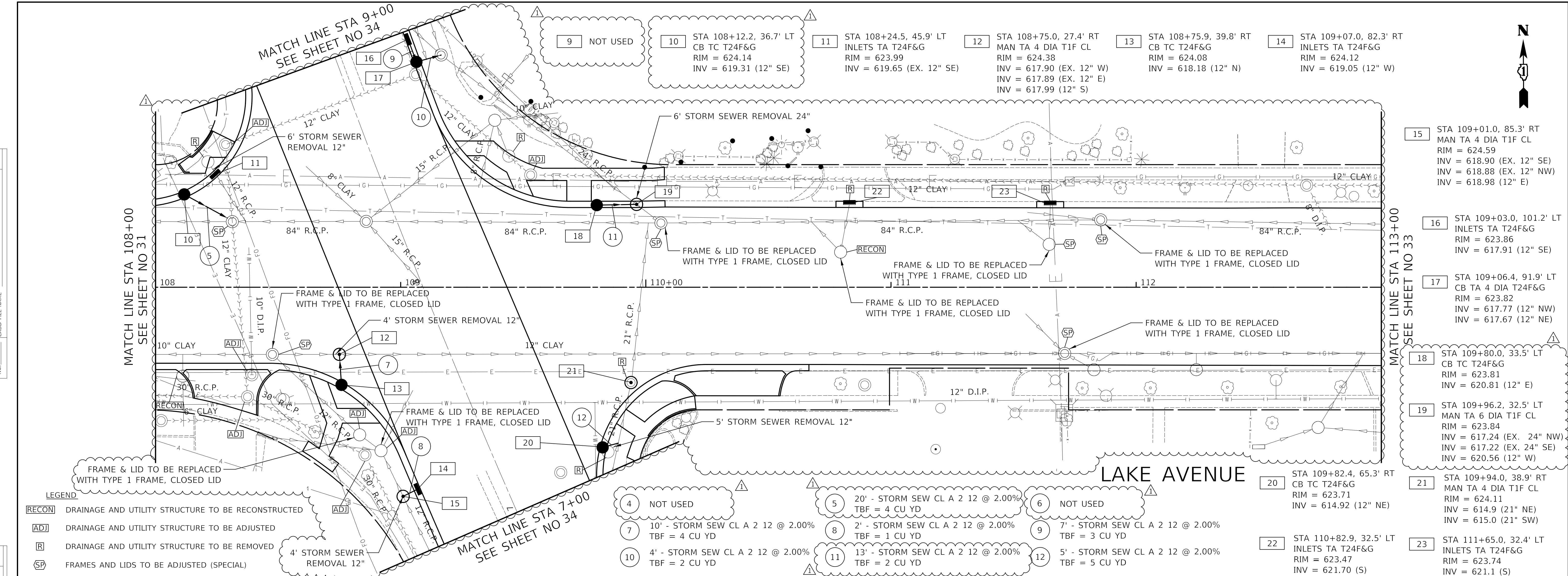
FAU RTE	SECTION	COUNTY	TOTAL SHEETS	SHEET NO
350/1292	19-00203-02-CH	COOK	99	30
CONTRACT NO 61J16				
ILLINOIS FED AID PROJECT				





PLAN	SURVEYED	DATE
	PLOTTED	BY
	ALIGNMENT CHECKED	
	NOTE BOOK NO.	
	CADD FILE NAME	

PROFILE	SURVEYED	DATE
	PLOTTED	BY
	GRADES CHECKED	
	STRUCTURE NOTATIONS CHK'D	

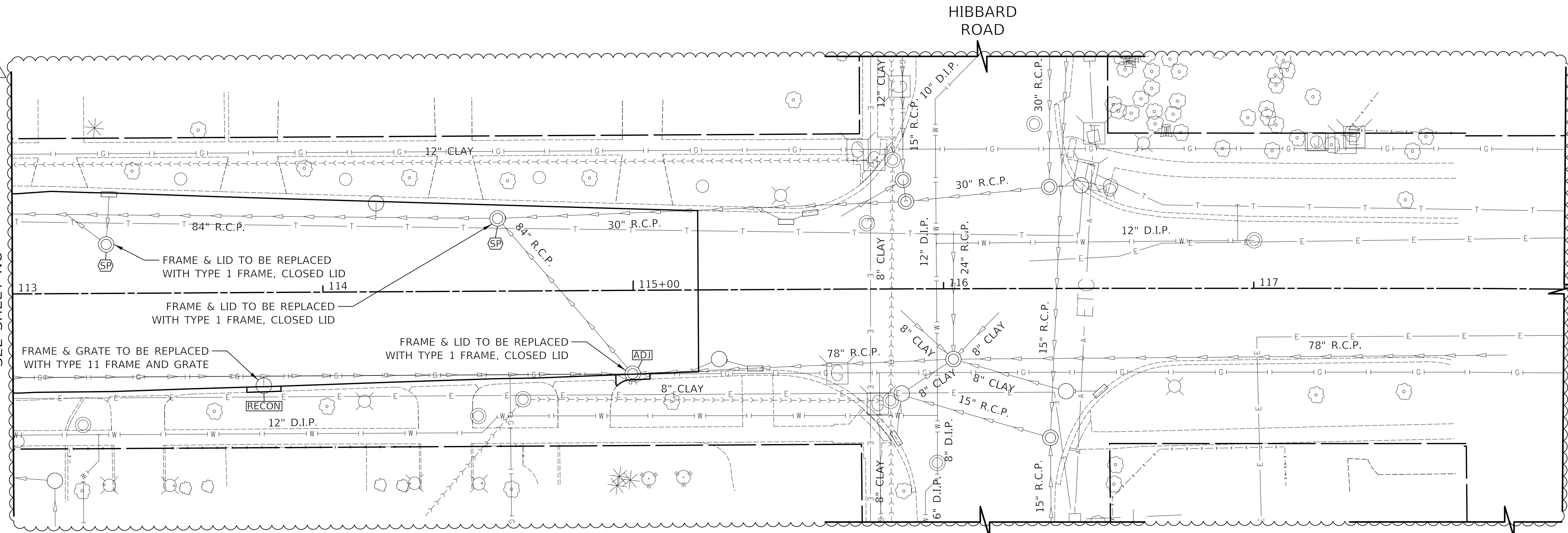


Two Pierce Place, Suite 1400 Itasca, Illinois 60143 Tel: 630.773.3900 Fax: 630.773.3975 www.civiltechinc.com	DESIGNED - IMG DRAWN - JRR CHECKED - KRK DATE - 11/28/2022	REVISED - 12/23/2022 REVISED - 1/19/2023 REVISED - 2/22/2023 REVISED -	<b>STATE OF ILLINOIS</b> <b>DEPARTMENT OF TRANSPORTATION</b>	VERT 0 5 10 HORIZ 0 20 40	<b>US RTE 41 (SKOKIE ROAD) AND LAKE AVENUE</b> <b>DRAINAGE AND UTILITIES</b>	FAU RTE 350/1292 SECTION 19-00203-02-CH COUNTY COOK ILLINOIS FED AID PROJECT	TOTAL SHEETS 99 SHEET NO 32 CONTRACT NO 61J16
	SHEET 3 OF 5 SHEETS STA 108+00.00 TO STA 113+00.00						



PLAN	SURVEYED	DATE
	PLOTTED	
	ALIGNMENT CHECKED	
	NOTE BOOK	
	NO.	
	CADD FILE NAME	

MATCH LINE STA 113+00  
SEE SHEET NO 32

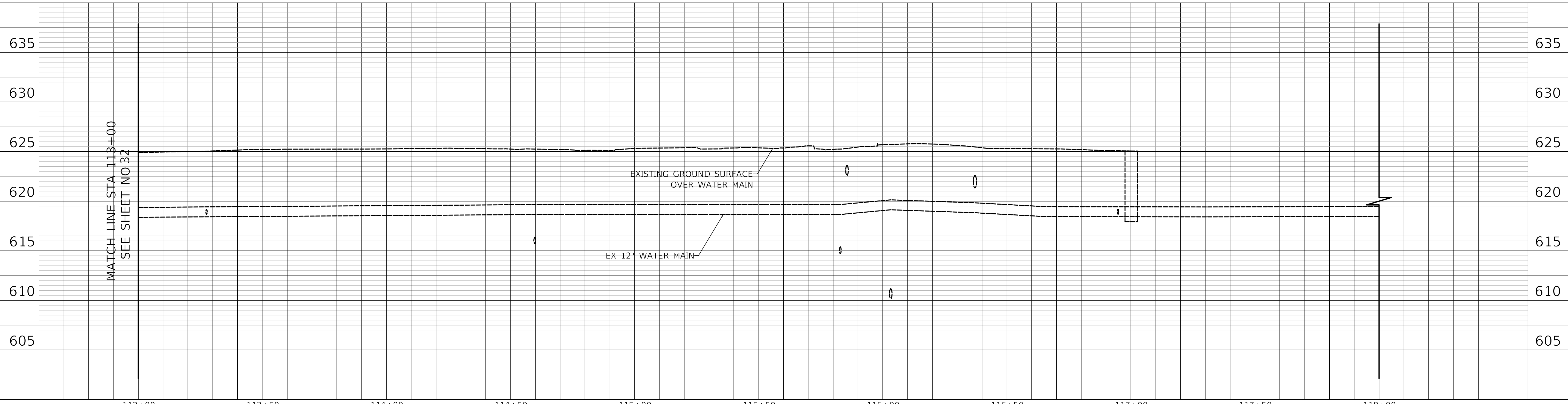


**LEGEND**

- RECON DRAINAGE AND UTILITY STRUCTURE TO BE RECONSTRUCTED
- ADJ DRAINAGE AND UTILITY STRUCTURE TO BE ADJUSTED
- R DRAINAGE AND UTILITY STRUCTURE TO BE REMOVED
- SP FRAMES AND LIDS TO BE ADJUSTED (SPECIAL)

PROFILE	SURVEYED	DATE
	PLOTTED	
	GRADES CHECKED	
	NOTE BOOK	
	NO.	
	STRUCTURE NOTATION CHPKD	

MATCH LINE STA 113+00  
SEE SHEET NO 32

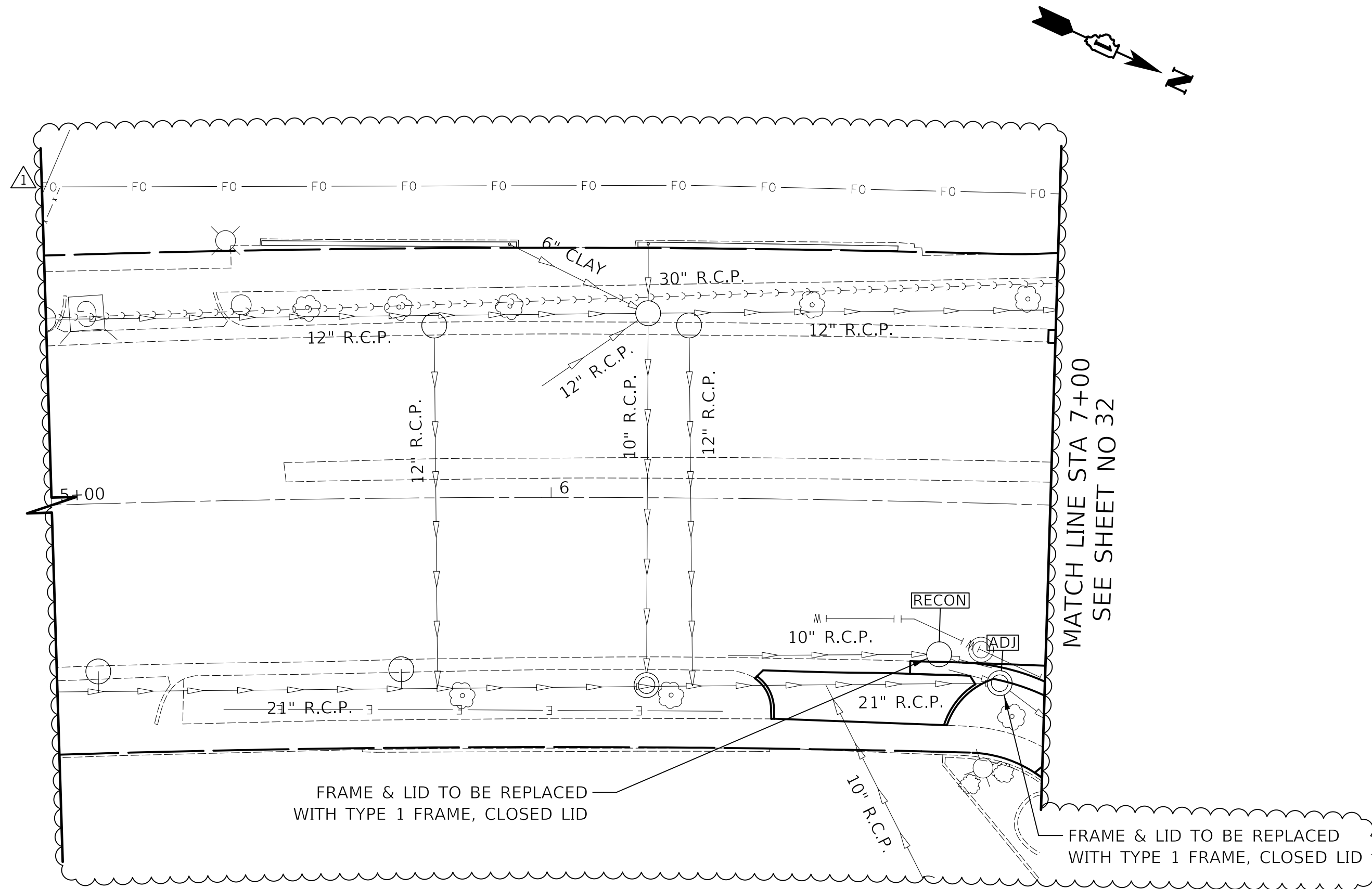


	Two Pierce Place, Suite 1400 Itasca, Illinois 60143 Tel: 630.773.3900 Fax: 630.773.3975 www.civiltechinc.com	DESIGNED - IMG DRAWN - JRR CHECKED - KRK DATE - 11/28/2022	REVISED - <span style="border: 1px solid black; padding: 2px;">A</span> 2/22/2023 REVISED - REVISED - REVISED -	<b>STATE OF ILLINOIS</b> <b>DEPARTMENT OF TRANSPORTATION</b>	VERT 0 5 10 HORIZ 0 20 40	<b>US RTE 41 (SKOKIE ROAD) AND LAKE AVENUE</b> <b>DRAINAGE AND UTILITIES</b>	FAU RTE 350/1292 SECTION 19-00203-02-CH COUNTY COOK CONTRACT NO 61J16	TOTAL SHEETS 99 SHEET NO 33
SHEET 4 OF 5 SHEETS STA 113+00.00 TO STA 118+00.00						ILLINOIS FED AID PROJECT		

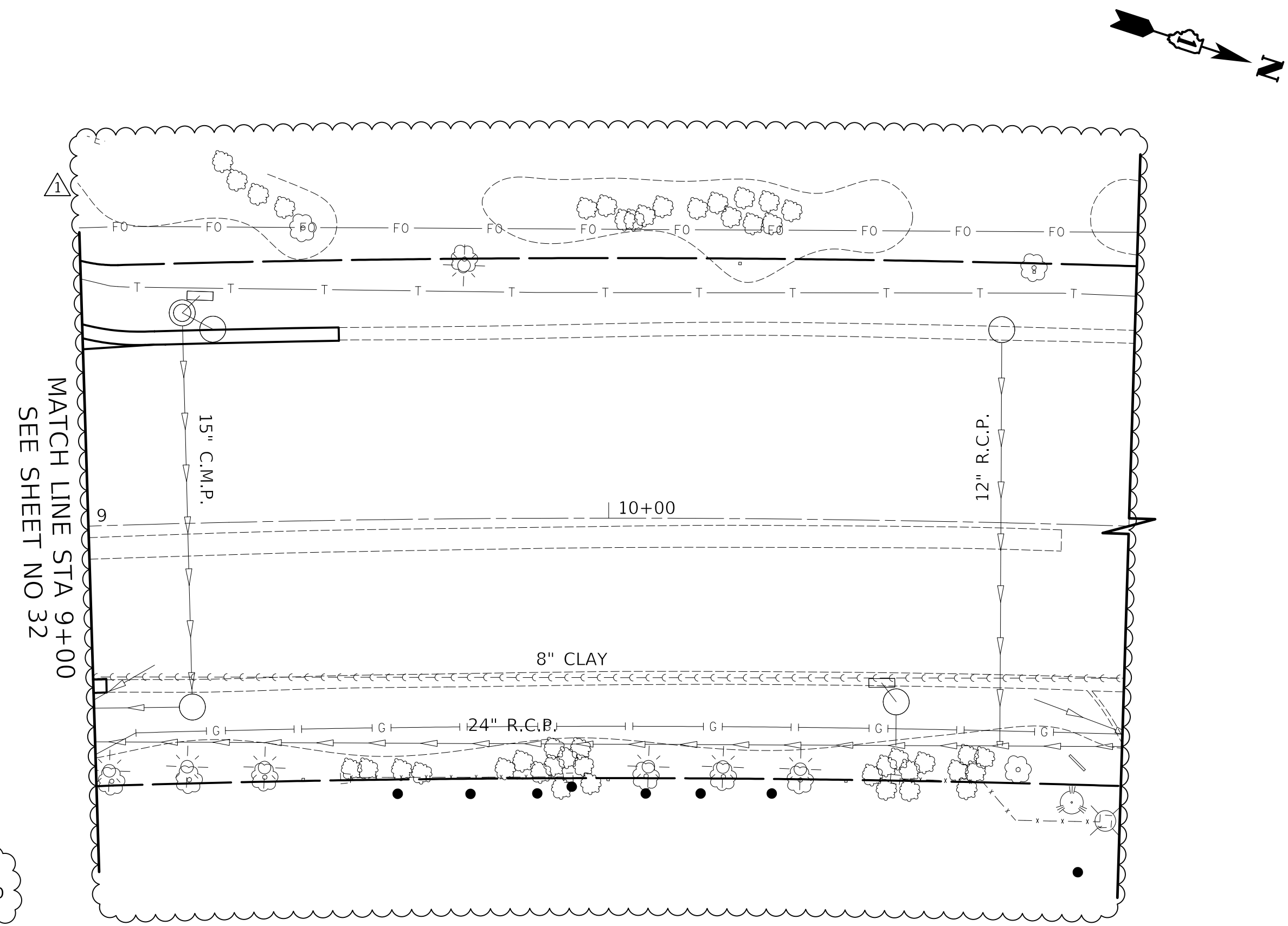


PLAN	SURVEYED	DATE
	PLOTTED	BY
	ALIGNMENT CHECKED	
	NOTE BOOK	
	NO.	
	FILE NAME	

PROFILE	SURVEYED	DATE
	PLOTTED	BY
	GRADES CHECKED	
	NOTE BOOK	
	NO.	
	FILE NAME	



US ROUTE 41 (SKOKIE BOULEVARD)



US ROUTE 41 (SKOKIE BOULEVARD)

LEGEND

- RECON** DRAINAGE AND UTILITY STRUCTURE TO BE RECONSTRUCTED
- ADJ** DRAINAGE AND UTILITY STRUCTURE TO BE ADJUSTED
- R** DRAINAGE AND UTILITY STRUCTURE TO BE REMOVED
- SP** FRAMES AND LIDS TO BE ADJUSTED (SPECIAL)

MODEL: SPODELINAMES  
FILE NAME: ...132653.DWG



Two Pierce Place, Suite 1400  
Itasca, Illinois 60143  
Tel: 630.773.3900 Fax: 630.773.3975  
www.civiltechinc.com

DESIGNED	-	JMG	REVISED	-	2/22/2023
DRAWN	-	JRR	REVISED	-	
CHECKED	-	KRK	REVISED	-	
DATE	-	11/28/2022	REVISED	-	

STATE OF ILLINOIS  
DEPARTMENT OF TRANSPORTATION

US RTE 41 (SKOKIE ROAD) AND LAKE AVENUE  
DRAINAGE AND UTILITIES

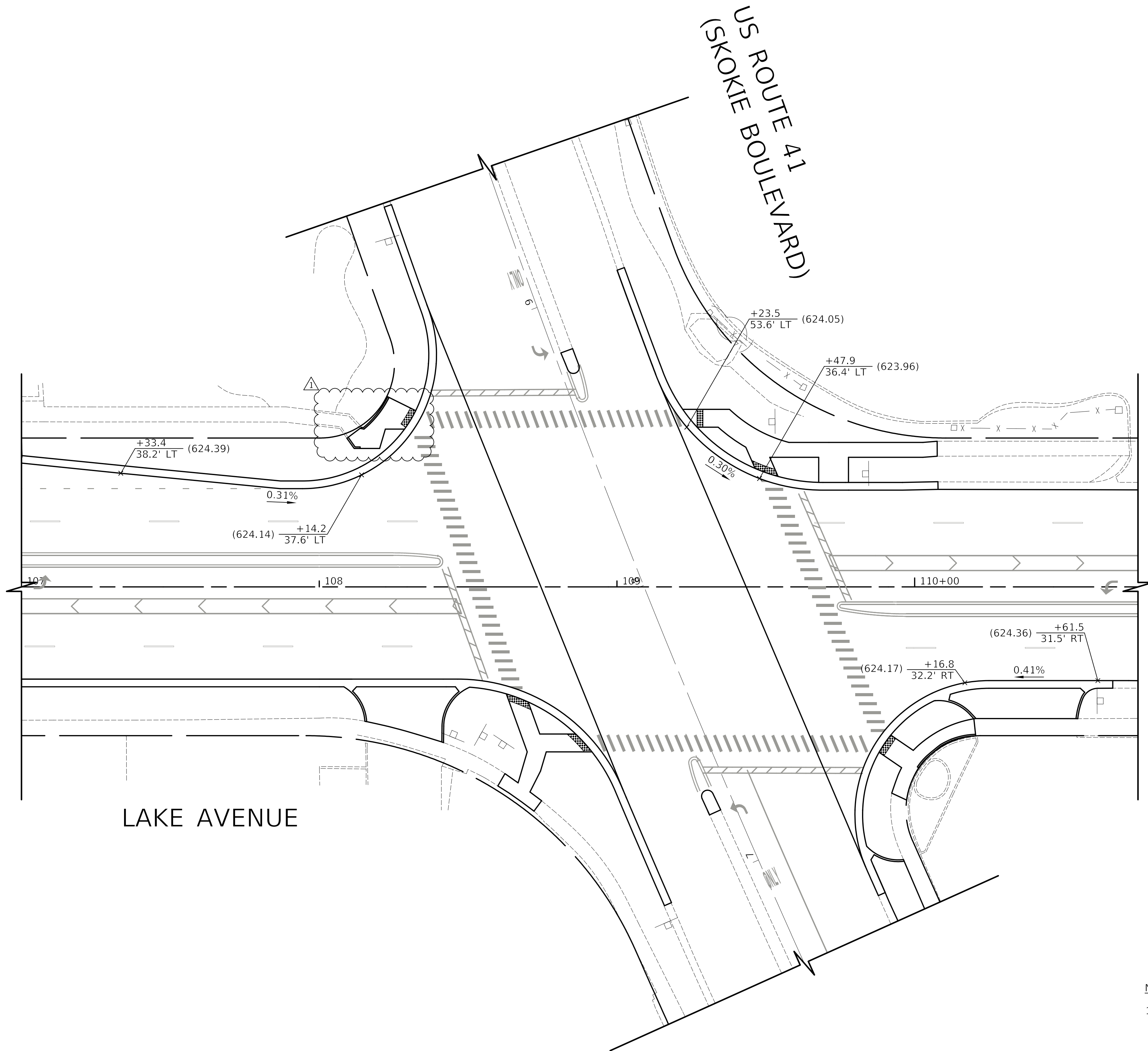
SHEET 5 OF 5 SHEETS STA 5+00.00 TO STA 11+00.00

FAU RTE	SECTION	COUNTY	TOTAL SHEETS	SHEET NO
350/1292	19-00203-02-CH	COOK	99	34
CONTRACT NO 61116				
ILLINOIS FED AID PROJECT				



PLAN	SURVEYED	DATE
	PLOTTED	
	ALIGNMENT CHECKED	
	BY	
	NOTE BOOK NO.	
	CADD FILE NAME	

PROFILE	SURVEYED	DATE
	PLOTTED	
	GRADES CHECKED	
	BY	
	NOTE BOOK NO.	
	STRUCTURE NOTATION CHYWD	



**LEGEND**

( ) EXISTING ELEVATION

**NOTE:**

- HOT-MIX ASPHALT SURFACE REMOVAL, VARIABLE DEPTH SHALL BE USED ADJACENT TO LOCATIONS WHERE SLOPES AND ELEVATIONS ARE PROVIDED. THESE ELEVATIONS AND SLOPES ARE PROVIDED TO ENSURE POSITIVE PITCH IN THE GUTTER.

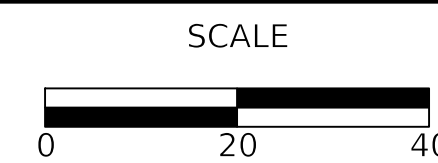
MODEL: SPODELNAME  
FILE NAME: ...112-Grading Plans\3663\_162.dgn



Two Pierce Place, Suite 1400  
Itasca, Illinois 60143  
Tel: 630.773.3900 Fax: 630.773.3975  
www.civiltechinc.com

DESIGNED	-	JMG	REVISED	-	12/23/2022
DRAWN	-	JRR	REVISED	-	2/22/2023
CHECKED	-	KRK	REVISED	-	
DATE	-	11/28/2022	REVISED	-	

**STATE OF ILLINOIS  
DEPARTMENT OF TRANSPORTATION**



**US RTE 41 (SKOKIE ROAD) AND LAKE AVENUE  
INTERSECTION GRADING PLAN**

SHEET 1 OF 1 SHEETS STA TO STA

FAU RTE	SECTION	COUNTY	TOTAL SHEETS	SHEET NO
350/1292	19-00203-02-CH	COOK	99	35
CONTRACT NO 61116				
ILLINOIS FED AID PROJECT				

PLAN	SURVEYED	DATE
	PLOTTED	BY
	ALIGNMENT CHECKED	
	NOTE BOOK	
	NO.	
	CADD FILE NAME	

PROFILE	SURVEYED	DATE
	PLOTTED	BY
	GRADES CHECKED	
	NOTE BOOK	
	NO.	
	STRUCTURE NOTATION	

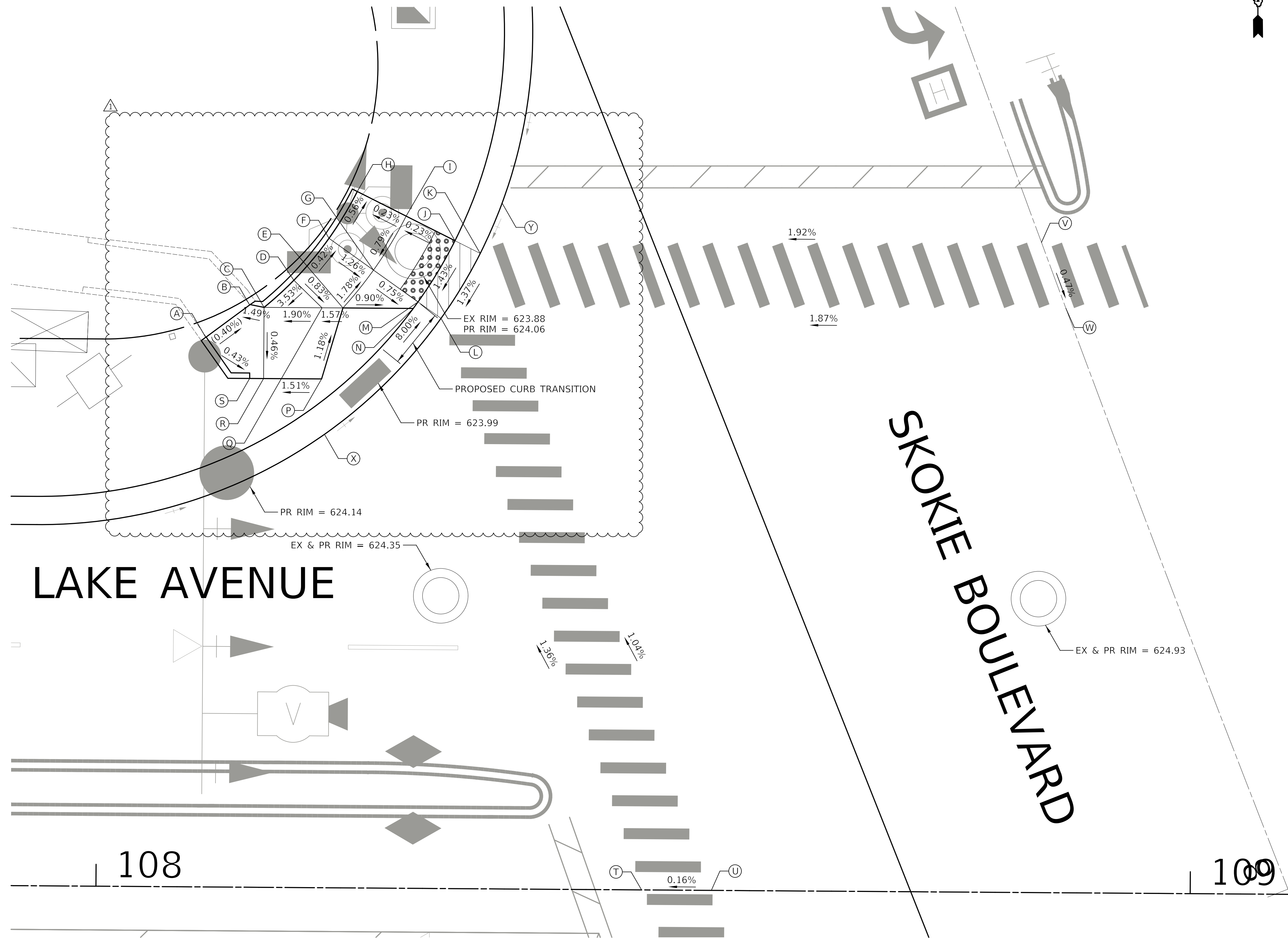
MODEL: SPODELNAMES  
FILE NAME: ...112-Grading Plans\3663 ADA.dgn



**LEGEND**

- PROPOSED SIDE CURB
- DETECTABLE WARNINGS (SPECIAL)
- DEPRESSED CURB AND GUTTER
- ( ) EXISTING ELEVATION / SLOPE

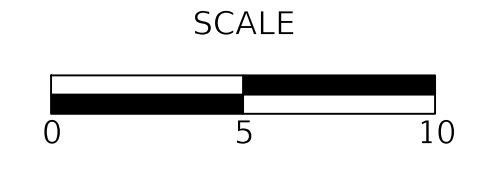
POINT	STATION	OFFSET	ELEVATION
A	108+09.73	50.24' L	(624.00)
B	108+13.73	53.23' L	(623.98)
C	108+15.00	52.98' L	624.00
D	108+17.71	55.49' L	624.13
E	108+22.21	52.98' L	624.13
F	108+20.89	59.34' L	624.11
G	108+24.98	56.46' L	624.05
H	108+23.44	63.63' L	624.08
I	108+27.93	61.42' L	624.09
J	108+32.41	59.20' L	624.11
K	108+34.72	58.06' L	(624.11)
L	108+31.18	52.10' L	(624.01)
M	108+29.07	53.58' L	624.01
N	108+28.64	52.98' L	624.07
O	NOT USED		
P	108+20.30	46.48' L	624.05
Q	108+20.30	52.98' L	624.10
R	108+15.00	46.48' L	623.97
S	108+13.73	46.48' L	623.98
T	108+49.86	0.00' L	(624.76)
U	108+56.24	0.00' L	(624.77)
V	8+63.22	0.00' L	(625.10)
W	8+56.82	0.00' L	(625.07)
X	108+20.60	41.43' L	(624.06)
Y	108+36.69	62.66' L	(624.15)



Two Pierce Place, Suite 1400  
Itasca, Illinois 60143  
Tel: 630.773.3900 Fax: 630.773.3975  
www.civiltechinc.com

DESIGNED -	JMG	REVISED -	12/23/2022
DRAWN -	JRR	REVISED -	1/19/2023
CHECKED -	KRK	REVISED -	2/22/2023
DATE -	11/28/2022	REVISED -	

**STATE OF ILLINOIS  
DEPARTMENT OF TRANSPORTATION**



**US RTE 41 (SKOKIE ROAD) AND LAKE AVENUE  
ADA CURB RAMP DETAILS**

SHEET 4 OF 6 SHEETS STA TO STA

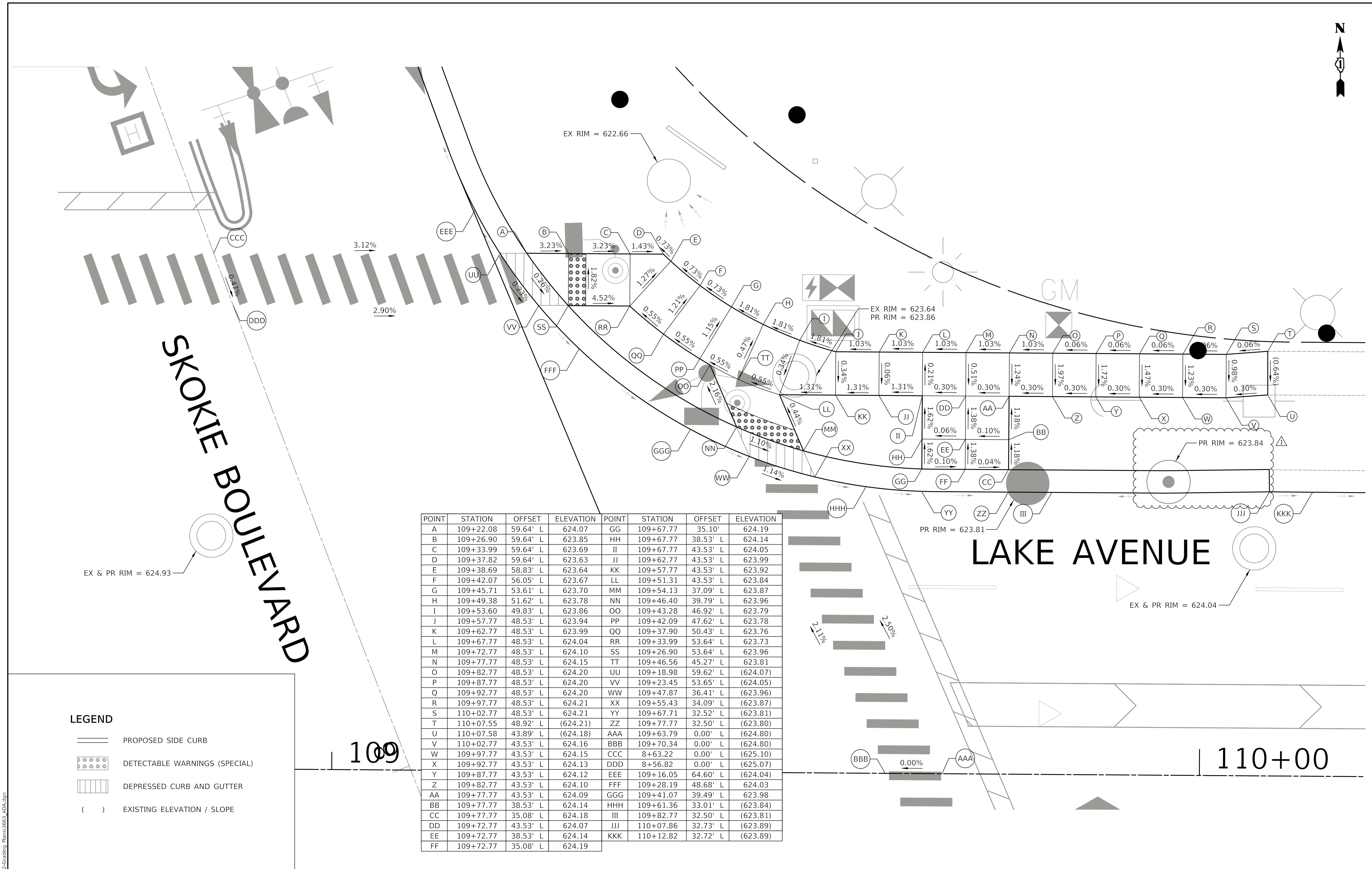
FAU RTE	SECTION	COUNTY	TOTAL SHEETS	SHEET NO
350/1292	19-00203-02-CH	COOK	99	42
CONTRACT NO 61116				
ILLINOIS FED AID PROJECT				





PLAN	SURVEYED	DATE
	PLOTTED	BY
	ALIGNMENT CHECKED	
	NOTE BOOK	
	NO.	
	CADD FILE NAME	
	NO.	

PROFILE	SURVEYED	DATE
	PLOTTED	BY
	GRADES CHECKED	
	NOTE BOOK	
	NO.	
	STRUCTURE NOTATION	
	NO.	



POINT	STATION	OFFSET	ELEVATION	POINT	STATION	OFFSET	ELEVATION
A	109+22.08	59.64' L	624.07	GG	109+67.77	35.10'	624.19
B	109+26.90	59.64' L	623.85	HH	109+67.77	38.53' L	624.14
C	109+33.99	59.64' L	623.69	II	109+67.77	43.53' L	624.05
D	109+37.82	59.64' L	623.63	JJ	109+62.77	43.53' L	623.99
E	109+38.69	58.83' L	623.64	KK	109+57.77	43.53' L	623.92
F	109+42.07	56.05' L	623.67	LL	109+51.31	43.53' L	623.84
G	109+45.71	53.61' L	623.70	MM	109+54.13	37.09' L	623.87
H	109+49.38	51.62' L	623.78	NN	109+46.40	39.79' L	623.96
I	109+53.60	49.83' L	623.86	OO	109+43.28	46.92' L	623.79
J	109+57.77	48.53' L	623.94	PP	109+42.09	47.62' L	623.78
K	109+62.77	48.53' L	623.99	QQ	109+37.90	50.43' L	623.76
L	109+67.77	48.53' L	624.04	RR	109+33.99	53.64' L	623.73
M	109+72.77	48.53' L	624.10	SS	109+26.90	53.64' L	623.96
N	109+77.77	48.53' L	624.15	TT	109+46.56	45.27' L	623.81
O	109+82.77	48.53' L	624.20	UU	109+18.98	59.62' L	(624.07)
P	109+87.77	48.53' L	624.20	VV	109+23.45	53.65' L	(624.05)
Q	109+92.77	48.53' L	624.20	VV	109+47.87	36.41' L	(623.96)
R	109+97.77	48.53' L	624.21	XX	109+55.43	34.09' L	(623.87)
S	110+02.77	48.53' L	624.21	YY	109+67.71	32.52' L	(623.81)
T	110+07.55	48.92' L	(624.21)	ZZ	109+77.77	32.50' L	(623.80)
U	110+07.58	43.89' L	(624.18)	AAA	109+63.79	0.00' L	(624.80)
V	110+02.77	43.53' L	624.16	BBB	109+70.34	0.00' L	(624.80)
W	109+97.77	43.53' L	624.15	CCC	8+63.22	0.00' L	(625.10)
X	109+92.77	43.53' L	624.13	DDD	8+56.82	0.00' L	(625.07)
Y	109+87.77	43.53' L	624.12	EEE	109+16.05	64.60' L	(624.04)
Z	109+82.77	43.53' L	624.10	FFF	109+28.19	48.68' L	624.03
AA	109+77.77	43.53' L	624.09	GGG	109+41.07	39.49' L	623.98
BB	109+77.77	38.53' L	624.14	HHH	109+61.36	33.01' L	(623.84)
CC	109+77.77	35.08' L	624.18	III	109+82.77	32.50' L	(623.81)
DD	109+72.77	43.53' L	624.07	JJJ	110+07.86	32.73' L	(623.89)
EE	109+72.77	38.53' L	624.14	KKK	110+12.82	32.72' L	(623.89)
FF	109+72.77	35.08' L	624.19				

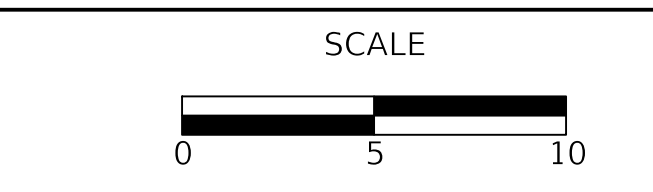
**LEGEND**

- PROPOSED SIDE CURB
- DETECTABLE WARNINGS (SPECIAL)
- DEPRESSED CURB AND GUTTER
- EXISTING ELEVATION / SLOPE

Two Pierce Place, Suite 1400  
Itasca, Illinois 60143  
Tel: 630.773.3900 Fax: 630.773.3975  
www.civiltechinc.com

DESIGNED -	JMG	REVISED -	12/23/2022
DRAWN -	JRR	REVISED -	1/19/2023
CHECKED -	KRK	REVISED -	2/22/2023
DATE -	11/28/2022	REVISED -	

**STATE OF ILLINOIS  
DEPARTMENT OF TRANSPORTATION**



**US RTE 41 (SKOKIE ROAD) AND LAKE AVENUE  
ADA CURB RAMP DETAILS**

SHEET 5 OF 6 SHEETS STA TO STA

FAU RTE	SECTION	COUNTY	TOTAL SHEETS	SHEET NO
350/1292	19-00203-02-CH	COOK	99	43
CONTRACT NO 61J16				
ILLINOIS FED AID PROJECT				

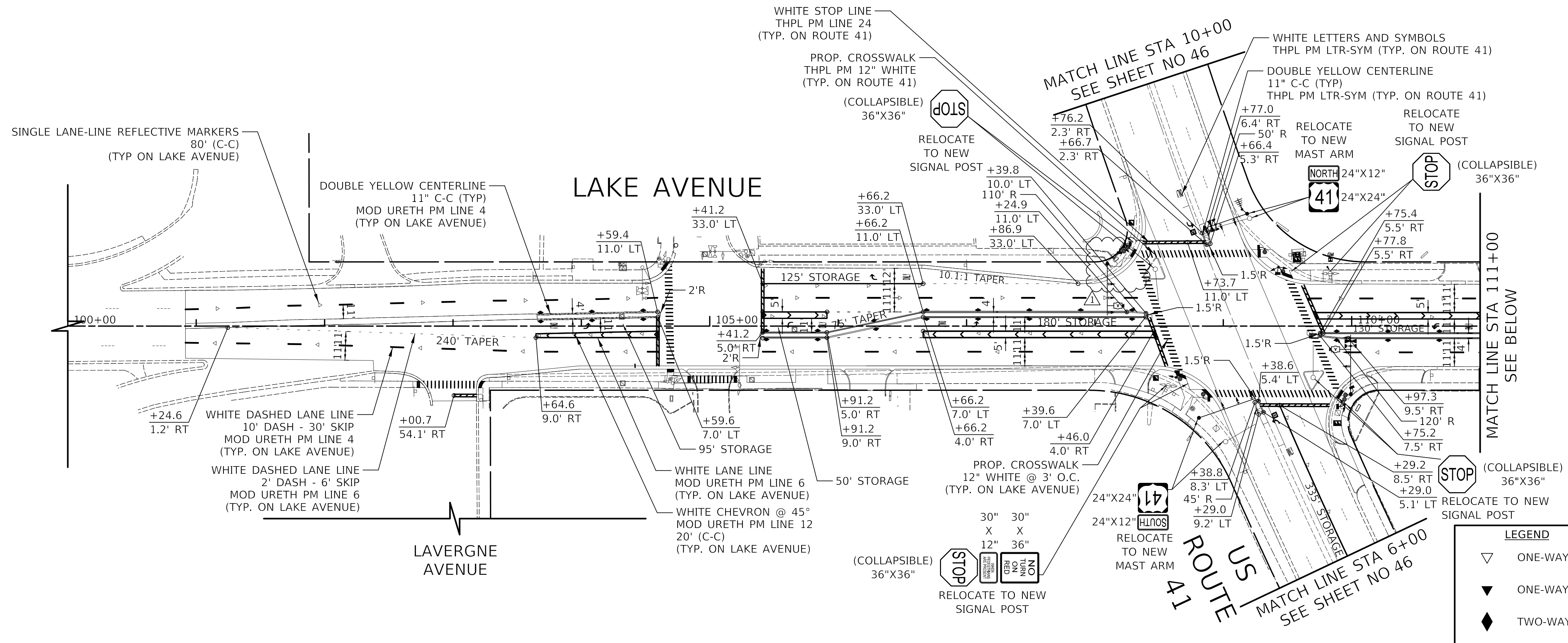
MODEL: SH02LNAME5  
FILE NAME: ...112-Grading Plans3663 ADA.dgn

PLAN	SURVEYED	DATE
	PLOTTED	BY
	ALIGNMENT CHECKED	
	NOTE BOOK	
	NO.	
	FILE NAME	
	FILE NO.	

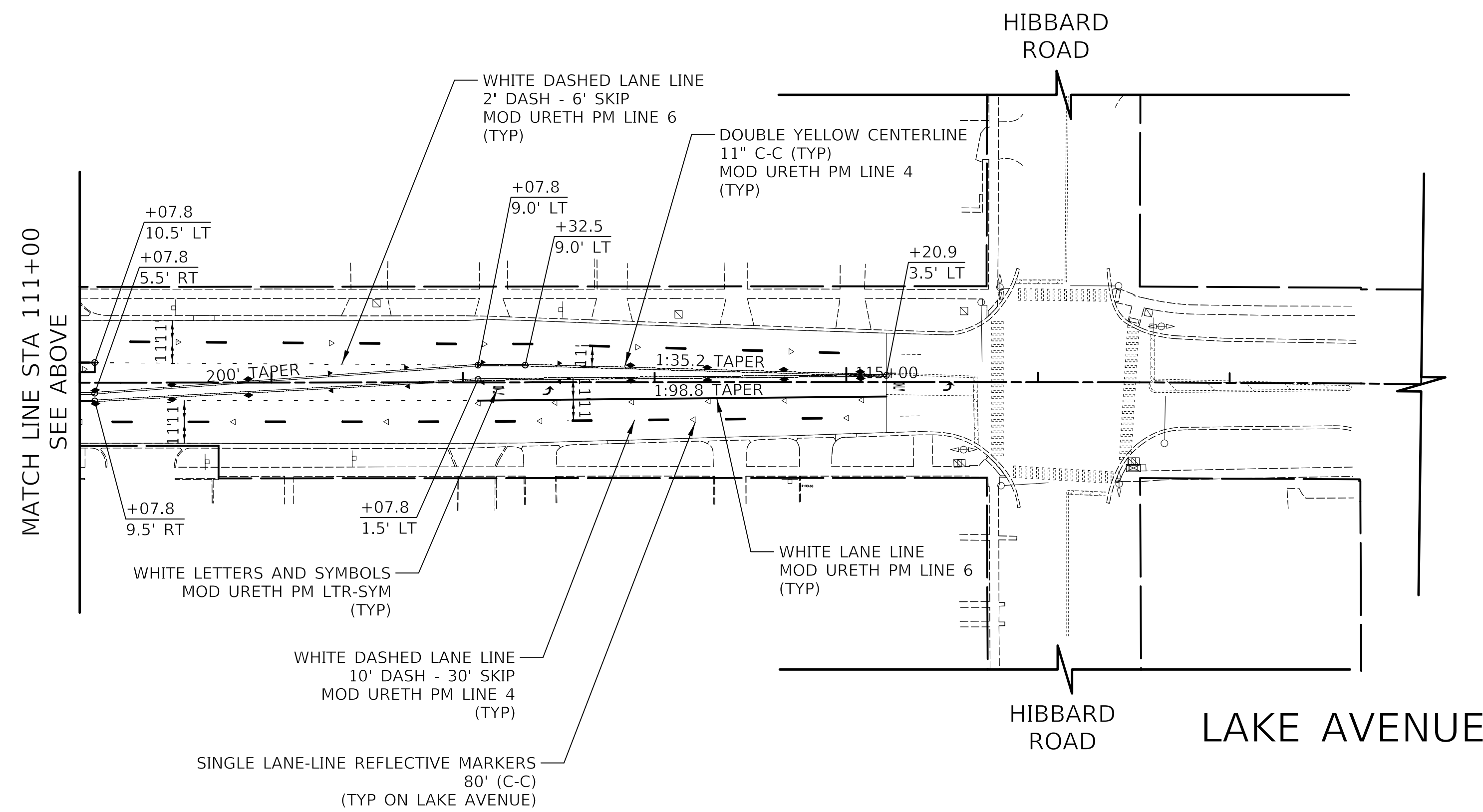
PROFILE	SURVEYED	DATE
	PLOTTED	BY
	GRADES CHECKED	
	NOTE BOOK	
	NO.	
	FILE NAME	
	FILE NO.	

**NOTE:**

1. RECESSED REFLECTIVE PAVEMENT MARKERS SHALL BE INSTALLED ON LAKE AVENUE. RAISED REFLECTIVE PAVEMENT MARKERS SHALL BE INSTALLED ON US ROUTE 41 (SKOKIE BOULEVARD).
2. REFLECTOR LAYOUT SHALL BE IN ACCORDANCE WITH STANDARD TC-11 UNLESS INDICATED OTHERWISE.
3. ALL PAVEMENT MARKINGS ON LAKE AVENUE SHALL BE MODIFIED URETHANE. ALL PAVEMENT MARKINGS ON US 41 (SKOKIE BLVD) SHALL BE THERMOPLASTIC
4. IF ANY EXISTING PAVEMENT MARKING AND/OR SIGNING ALONG COOK COUNTY ROADWAYS IS DAMAGED DUE TO CONSTRUCTION OF PROPOSED IMPROVEMENTS, THE CONTRACTOR SHALL REPLACE THE DAMAGED TRAFFIC CONTROL DEVICES TO THE SATISFACTION OF COOK COUNTY PER IDOT AND IDOT DISTRICT 1 STANDARDS FOR TRAFFIC CONTROL DEVICES, PAVEMENT MARKING, AND SIGNAGE IN ACCORDANCE WITH ARTICLE 107.20.



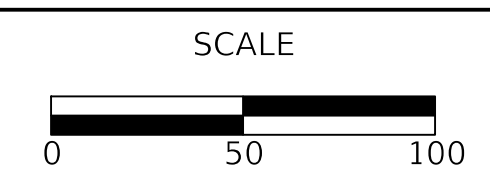
LEGEND	
▽	ONE-WAY CRYSTAL PAVEMENT MARKER
▼	ONE-WAY AMBER PAVEMENT MARKER
◆	TWO-WAY AMBER PAVEMENT MARKER



**CIVILTECH**  
 Two Pierce Place, Suite 1400  
 Itasca, Illinois 60143  
 Tel: 630.773.3900 Fax: 630.773.3975  
 www.civiltechinc.com

DESIGNED -	JMG	REVISED -	12/23/2022
DRAWN -	JRR	REVISED -	1/19/2023
CHECKED -	KRK	REVISED -	2/22/2023
DATE -	11/28/2022	REVISED -	

**STATE OF ILLINOIS**  
**DEPARTMENT OF TRANSPORTATION**



**US RTE 41 (SKOKIE ROAD) AND LAKE AVENUE**  
**SIGNING AND PAVEMENT MARKING PLANS**

FAU RTE	SECTION	COUNTY	TOTAL SHEETS	SHEET NO
350/1292	19-00203-02-CH	COOK	99	45
CONTRACT NO 61J16				
ILLINOIS FED AID PROJECT				

SHEET 1 OF 2 SHEETS STA 100+00.00 TO STA 118+00.00

MODEL: SPODELNAMER  
 FILE NAME: ...35652 Pavement Markings.dgn







PLAN	SURVEYED	DATE
	PLOTTED	BY
NOTE BOOK NO.	ALIGNMENT CHECKED	
	CADD FILE NAME	

PROFILE	SURVEYED	DATE
	PLOTTED	BY
NOTE BOOK NO.	GRADES CHECKED	
	STRUCTURE NOTATIONS CHECKED	

TS SHT NO. 19

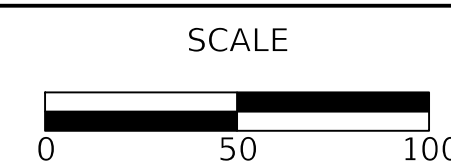
MODEL: S:\MODEL\NAMES  
FILE NAME: ...19-20\_1519-20\_Lake-Skokie-Interconnect\_Plan.dgn



Two Pierce Place, Suite 1400  
Itasca, Illinois 60143  
Tel: 630.773.3900 Fax: 630.773.3975  
www.civiltechinc.com

DESIGNED - AS	REVISED - 12/23/2022
DRAWN - AS	REVISED - 1/19/2023
CHECKED - JJE	REVISED - 2/22/2023
DATE - 11/28/2022	REVISED -

STATE OF ILLINOIS  
DEPARTMENT OF TRANSPORTATION



US RTE 41 (SKOKIE ROAD) AND LAKE AVENUE  
PROPOSED INTERCONNECT PLAN (SHEET 1 OF 2)

SHEET 1 OF 2 SHEETS STA TO STA

FAU RTE	SECTION	COUNTY	TOTAL SHEETS	SHEET NO
350/1292	19-00203-02-CH	COOK	99	65
CONTRACT NO 61116				
ILLINOIS FED AID PROJECT				

ECON 10

