

03-10-2023 LETTING ITEM 105

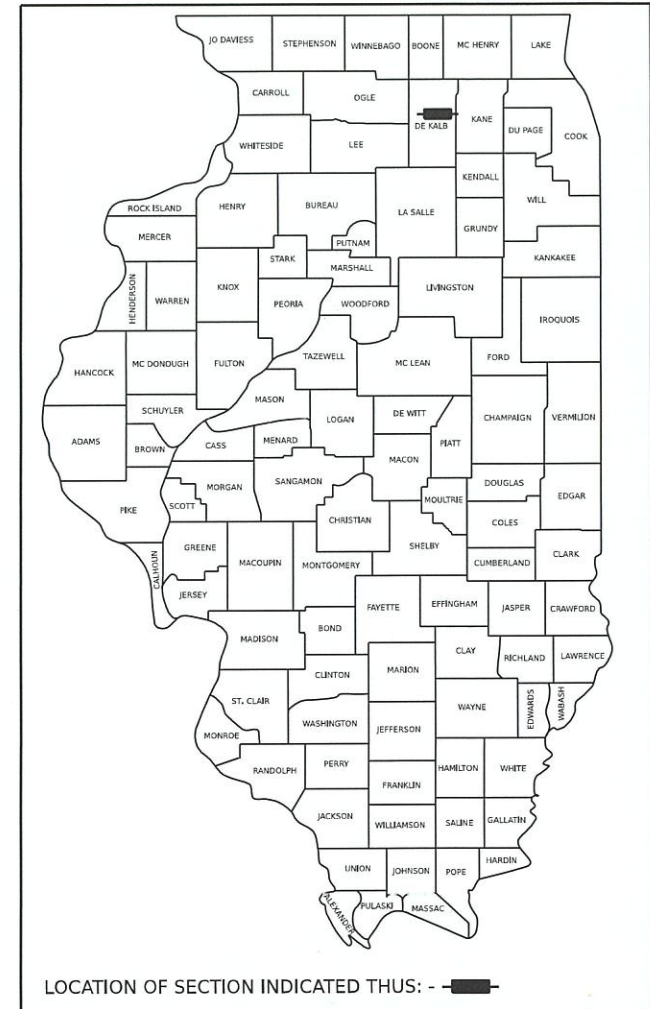
FOX INDEX OF SHEETS AND LIST OF STATE STANDARDS SEE SHEET NO. 2

STATE OF ILLINOIS  
DEPARTMENT OF TRANSPORTATION

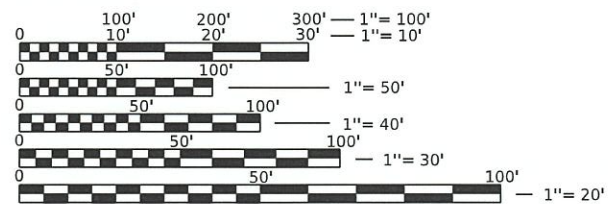
**PROPOSED  
FEDERAL AID HIGHWAY**

FAU 5358 / FAU 5330  
DEKALB AVENUE / ELM STREET RESURFACING  
SECTION 21-00084-00-RS  
PROJECT NO. 3H3F (292)  
CITY OF SYCAMORE  
DEKALB COUNTY  
C-93-016-23

F.A.U. RTE.	SECTION	COUNTY	TOTAL SHEETS	SHEET NO.
5358 5330	21-00084-00-RS	DEKALB	19	1
		ILLINOIS	CONTRACT NO. 87804	



*Terry M. Heitkamp*  
TERRY HEITKAMP, P.E.  
ILLINOIS REGISTERED PROFESSIONAL ENGINEER  
EXPIRATION DATE 11-30-2023

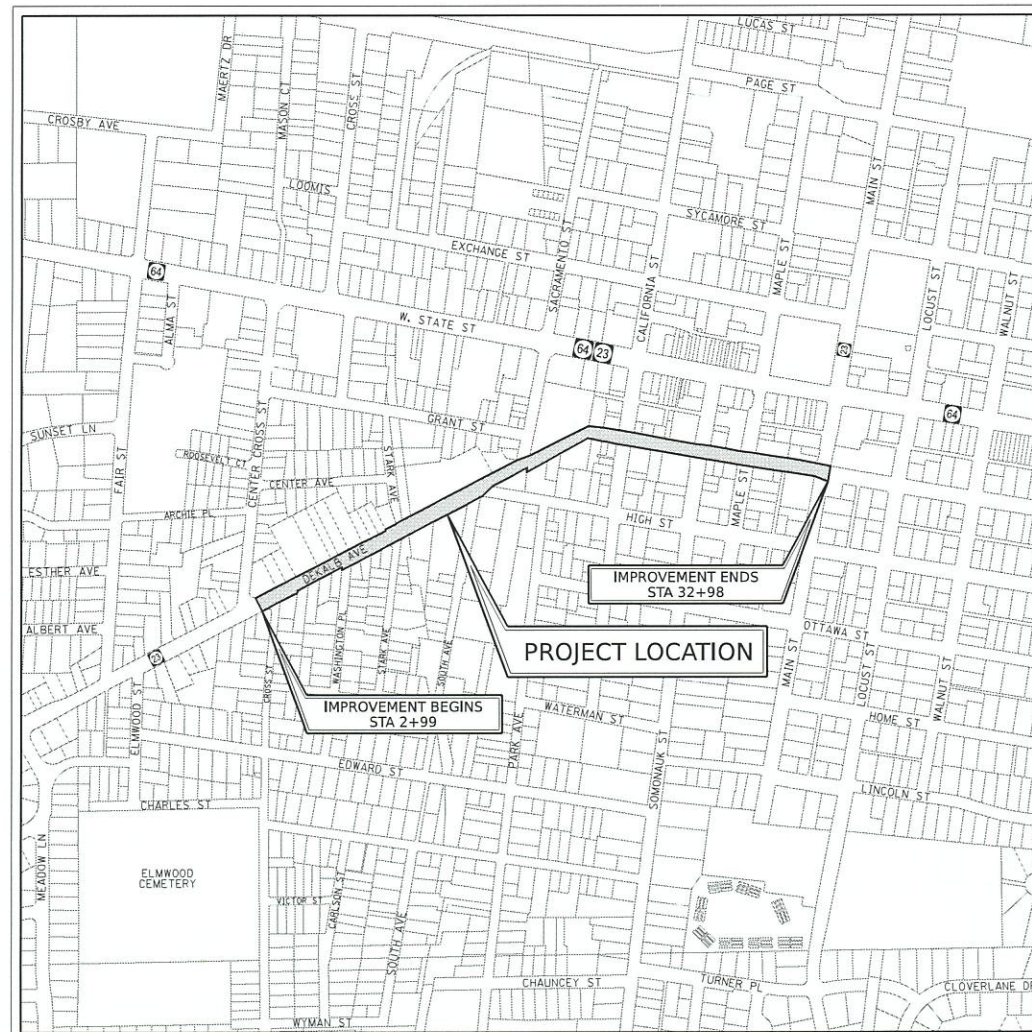


FULL SIZE PLANS HAVE BEEN PREPARED USING STANDARD ENGINEERING SCALES. REDUCED SIZED PLANS WILL NOT CONFORM TO STANDARD SCALES. IN MAKING MEASUREMENTS ON REDUCED PLANS, THE ABOVE SCALES MAY BE USED.

**J.U.L.I.E.  
JOINT UTILITY LOCATION INFORMATION FOR EXCAVATION  
1-800-892-0123  
OR 811**

CITY OF SYCAMORE  
MARK BUSHNELL, P.E.  
CITY ENGINEER  
(815) 895-4557

CONTRACT NO. 87804



TOTAL LENGTH OF PROJECT = 2,999 LF = 0.57 MILES

STATE OF ILLINOIS DEPARTMENT OF TRANSPORTATION	
APPROVED <i>[Signature]</i>	20 23
Mark Bushnell, City Engineer, City of Sycamore LOCAL PUBLIC AGENCY	
PASSED <i>[Signature]</i>	20 23
DISTRICT 3 ENGINEER OF LOCAL ROADS AND STREETS	
RELEASING FOR BID BASED ON LIMITED REVIEW	<i>[Signature]</i> 20 23 REGION 2 ENGINEER

PRINTED BY THE AUTHORITY  
OF THE STATE OF ILLINOIS

INDEX OF SHEETS

- 1 COVER SHEET
- 2 INDEX OF SHEETS, GENERAL NOTES AND LIST OF STANDARDS
- 3 SUMMARY OF QUANTITIES AND SCHEDULE OF QUANTITIES
- 4 TYPICAL SECTIONS
- 5 ALIGNMENT AND BENCHMARKS
- 6 PAVING AND RESTORATION - DEKALB AVENUE - STA 0+00 TO STA 10+00
- 7 PAVING AND RESTORATION - DEKALB AVENUE - STA 10+00 TO STA 20+00
- 8 PAVING AND RESTORATION - ELM STREET - STA 20+00 TO STA 30+00
- 9 PAVING AND RESTORATION - ELM STREET - STA 30+00 TO STA 33+00
- 10 PAVEMENT MARKING PLAN - DEKALB AVENUE - STA 0+00 TO STA 10+00
- 11 PAVEMENT MARKING PLAN - DEKALB AVENUE - STA 10+00 TO STA 20+00
- 12 PAVEMENT MARKING PLAN - ELM STREET - STA 20+00 TO STA 30+00
- 13 PAVEMENT MARKING PLAN - ELM STREET - STA 30+00 TO STA 33+00
- 14-19 ADA RAMP DETAILS

GENERAL NOTES

1. ALL REFERENCES TO STANDARD SPECIFICATIONS SHALL BE INTERPRETED TO MEAN THE "STANDARD SPECIFICATIONS FOR ROAD AND BRIDGE CONSTRUCTION IN ILLINOIS" ADOPTED BY THE ILLINOIS DEPARTMENT OF TRANSPORTATION, JANUARY 1, 2022 AND THE "SUPPLEMENTAL SPECIFICATIONS FOR RECURRING SPECIAL PROVISIONS", ADOPTED JANUARY 1, 2022.
2. ALL CONSTRUCTION SHALL BE IN ACCORDANCE WITH THE STANDARD SPECIFICATIONS; THE LATEST EDITION OF THE "MANUAL ON UNIFORM TRAFFIC CONTROL DEVICES FOR STREETS AND HIGHWAYS (MUTCD)"; THE DETAILS IN THE PLANS AND THE SPECIAL PROVISIONS, AND IDOT STANDARD DRAWINGS AS LISTED IN THE CONTRACT DOCUMENTS.
3. THE HMA SURFACE OF ALL MAILBOX TURNOUTS, PRIVATE ENTRANCES, COMMERCIAL ENTRANCES, AND SIDE ROADS SHALL BE MADE NEATLY, IN A WORKMANLIKE MANNER, AND SHALL ACCURATELY CONFORM TO THE SHAPES AND DIMENSIONS SHOWN ON THE PLAN DETAILS. IF REQUIRED BY THE ENGINEER, THE CONTRACTOR SHALL SAW CUT THE HMA SURFACE TO CONFORM TO THE SHAPES AND DIMENSIONS SHOWN ON THE PLAN DETAILS. THIS WORK WILL BE INCLUDED IN THE COST OF THE HMA SURFACE.
4. EXCEPT AS NOTED ON THE PLANS, PAVEMENT GRADES SHOWN ARE AT THE TOP OF PAVEMENT SURFACES.
5. THE ENGINEER WILL BE THE SOLE JUDGE CONCERNING CURING TIME FOR THE VARIOUS HMA LIFTS.
6. ALL ELEVATIONS REFERRING TO U.S.G.S. MEAN SEA LEVEL DATUM.
7. ALL DAMAGE TO DEPARTMENT OWNED UNDERGROUND FACILITIES, CAUSED BY THE CONTRACTOR SHALL BE REPAIRED TO THE SATISFACTION OF THE ENGINEER AND AT NO EXPENSE TO THE DEPARTMENT. THIS SHALL INCLUDE ALL TEMPORARY REPAIRS REQUIRED TO KEEP THE FACILITY OPERATIONAL WHILE MATERIAL IS BEING OBTAINED TO MAKE PERMANENT REPAIRS. SPLICING OF ELECTRIC CABLE WILL NOT BE ALLOWED. ELECTRIC CABLE SHALL BE REPLACED FROM POLE TO POLE OR CONTROLLER.
8. MEMBERS OF JULIE KNOWN TO BE WITHIN THE LIMITS OF THE IMPROVEMENTS ARE:  
 COMED  
 COMCAST  
 DEKALB FIBER OPTIC  
 DNA COMMUNICATIONS  
 EVERSTREAM  
 FRONTIER COMMUNICATIONS  
 METRO FIBERNET  
 NICOR  
 CITY OF SYCAMORE
9. THE CONTRACTOR SHALL CONTACT JULIE AT LEAST 48 HOURS PRIOR TO EXCAVATION TO DETERMINE WHICH UTILITIES ARE IN THE AREA.

IDOT HIGHWAY STANDARDS

- 424001-11 PERPENDICULAR CURB RAMPS FOR SIDEWALKS
- 424006-05 DIAGONAL CURB RAMPS FOR SIDEWALKS
- 424011-04 CORNER PARALLEL CURB RAMPS FOR SIDEWALKS
- 424016-05 MID-BLOCK CURB RAMPS FOR SIDEWALKS
- 424021-06 DEPRESSED CORNER FOR SIDEWALKS
- 606001-08 CONCRETE CURB TYPE B AND COMBINATION CONCRETE CURB AND GUTTER
- 701501-06 URBAN LANE CLOSURE, 2L, 2W, UNDIVIDED
- 701801-06 SIDEWALK, CORNER OR CROSSWALK CLOSURE
- 701901-08 TRAFFIC CONTROL DEVICES

STATE OF ILLINOIS  
DEPARTMENT OF TRANSPORTATION

INDEX OF SHEETS, GENERAL NOTES  
AND LIST OF STANDARDS

SCALE: N.T.S. SHEET OF SHEETS STA. TO STA.

F.A.U RTE. 5358 5330	SECTION 21-00084-00-R5	COUNTY DEKALB	TOTAL SHEETS 19	SHEET NO. 2
CONTRACT NO. 87804			ILLINOIS	
FED. AID PROJECT 3H3F (292)				

MODEL: 4100DEKALB.MXD  
FILE NAME: 312123



USER NAME = mdavison	DESIGNED - TMH	REVISED -
	DRAWN - MJD	REVISED -
PLOT SCALE = 1,0000' / in.	CHECKED - TMH	REVISED -
PLOT DATE = 12/21/2022	DATE - 12/21/2022	REVISED -

SUMMARY OF QUANTITIES

SP	CODE NO	ITEM	UNIT	TOTAL QUANTITY
	21101615	TOPSOIL FURNISH AND PLACE, 4"	SQ YD	86
	25000110	SEEDING, CLASS 1A	ACRE	0.25
	25000400	NITROGEN FERTILIZER NUTRIENT	POUND	1.6
	25000500	PHOSPHORUS FERTILIZER NUTRIENT	POUND	1.6
	25000600	POTASSIUM FERTILIZER NUTRIENT	POUND	1.6
	25100630	EROSION CONTROL BLANKET	SQ YD	86
*	28000510	INLET FILTERS	EACH	40
	40600290	BITUMINOUS MATERIALS (TACK COAT)	POUND	6709
	40600370	LONGITUDINAL JOINT SEALANT	FOOT	4000
	40604060	HOT-MIX ASPHALT SURFACE COURSE, IL-9.5, MIX "D", N50, 2"	TON	1670
*	42400200	PORTLAND CEMENT CONCRETE SIDEWALK, 5 INCH	SQ FT	3672
	42400800	DETECTABLE WARNINGS	SQ FT	278
	44000157	HOT-MIX ASPHALT SURFACE REMOVAL, 2"	SQ YD	12750
*	44000500	COMBINATION CURB AND GUTTER REMOVAL	FOOT	366
	44000600	SIDEWALK REMOVAL	SQ FT	3629
	60255500	MANHOLE TO BE ADJUSTED	EACH	2
*	60603800	COMBINATION CONCRETE CURB AND GUTTER, TYPE B-6.12	FOOT	594
	67100100	MOBILIZATION	L SUM	1
	70102620	TRAFFIC CONTROL AND PROTECTION, STANDARD 701501	L SUM	1
	70102640	TRAFFIC CONTROL AND PROTECTION, STANDARD 701801	L SUM	1
#	78000100	THERMOPLASTIC PAVEMENT MARKING - LETTERS AND SYMBOLS	SQ FT	26
#	78000200	THERMOPLASTIC PAVEMENT MARKING - LINE 4"	FOOT	293
#	78000400	THERMOPLASTIC PAVEMENT MARKING - LINE 6"	FOOT	4703
#	78000650	THERMOPLASTIC PAVEMENT MARKING - LINE 24"	FOOT	262
#	78011000	GROOVING FOR RECESSED PAVEMENT MARKING - LETTERS AND SYMBOLS	SQ FT	26
#	78011025	GROOVING FOR RECESSED PAVEMENT MARKING 5"	FOOT	293
#	78011035	GROOVING FOR RECESSED PAVEMENT MARKING 7"	FOOT	4703
#	78011125	GROOVING FOR RECESSED PAVEMENT MARKING 25"	FOOT	262
		* SPECIAL PROVISION # SPECIALTY ITEM		

SCHEDULE OF QUANTITIES

REMOVAL ITEMS				
LOCATION	HOT-MIX ASPHALT SURFACE REMOVAL, 2"	SIDEWALK REMOVAL	COMBINATION CURB AND GUTTER REMOVAL	
STATION TO STATION	SQ YD	SQ FT	FOOT	
2+99 TO 5+00	640	0	0	
5+00 TO 10+00	1,738	375	9	
10+00 TO 15+00	1,886	329	46	
15+00 TO 20+00	2,457	85	88	
20+00 TO 25+00	2,232	830	144	
25+00 TO 30+00	2,183	1,247	28	
30+00 TO 32+97.66	1,614	763	51	
TOTAL	12,750	3,629	366	

INLET FILTERS		
STATION	OFFSET	QUANTITY
5+64.99	21.2' RT	1
6+13.55	24.5' RT	1
6+16.67	21.5' RT	1
6+22.54	17.7' LT	1
8+63.84	24.9' RT	1
9+15.97	24.5' RT	1
9+19.88	2.5' LT	1
9+92.20	18.5' RT	1
10+18.01	20.4' LT	1
10+18.08	17.8' LT	1
18+46.74	33.8' RT	1
20+00.15	37.3' RT	1
20+33.80	30.9' LT	1
20+36.42	23.2' RT	1
21+91.69	48.1' LT	1
21+94.28	43.5' RT	1
22+33.82	37.6' RT	1
22+36.89	41.1' LT	1
23+15.70	22.3' RT	1
24+30.05	21.5' LT	1
25+47.14	25.9' LT	1
25+57.21	29.8' RT	1
25+88.39	95.2' RT	1
26+37.44	86.2' RT	1
26+44.29	40.6' LT	1
26+69.31	28.7' RT	1
28+13.28	24.6' LT	1
28+30.17	52.3' LT	1
28+30.81	30.1' RT	1
28+45.08	43.6' LT	1
28+68.12	43.3' LT	1
28+84.93	51.3' LT	1
29+31.45	22.4' RT	1
29+32.44	21.4' LT	1
29+38.53	22.4' RT	1
30+47.34	20.9' RT	1
31+55.80	22.9' RT	1
31+56.92	20.8' LT	1
32+85.08	56.9' LT	1
32+99.63	14.1' RT	1
TOTAL		40

PROPOSED PAVEMENT					
LOCATION	HOT-MIX ASPHALT SURFACE COURSE, IL-9.5, MIX "D", N50, 2"	BITUMINOUS MATERIALS (TACK COAT)	COMBINATION CONCRETE CURB AND GUTTER, TYPE B-6.12	PORTLAND CEMENT CONCRETE SIDEWALK, 5"	DETECTABLE WARNINGS
STATION TO STATION	TON	LB	FOOT	SQ FT	SQ FT
2+99 TO 5+00	85	342	40	0	0
5+00 TO 10+00	250	1,003	85	447	34
10+00 TO 15+00	245	984	103	300	26
15+00 TO 20+00	299	1,200	103	85	8
20+00 TO 25+00	284	1,140	174	830	52
25+00 TO 30+00	327	1,314	38	1,247	112
30+00 TO 32+97.66	181	726	51	763	46
TOTAL	1,670	6,709	594	3,672	278

RESTORATION							
LOCATION	AREA (HDE)	SEEDING CLASS 1A	TOPSOIL FURNISH AND PLACE, 4"	EROSION CONTROL BLANKET	NITROGEN FERTILIZER NUTRIENT	PHOSPHOROUS FERTILIZER NUTRIENT	POTASSIUM FERTILIZER NUTRIENT
STATION TO STATION	SQ YD	ACRE	SQ YD	SQ YD	POUND	POUND	POUND
2+99 TO 5+00	9	0.002	9	9	0.2	0.2	0.2
5+00 TO 10+00	28	0.006	28	28	0.5	0.5	0.5
10+00 TO 15+00	15	0.003	15	15	0.3	0.3	0.3
15+00 TO 20+00	4	0.001	4	4	0.1	0.1	0.1
20+00 TO 25+00	19	0.004	19	19	0.4	0.4	0.4
25+00 TO 30+00	8	0.002	8	8	0.1	0.1	0.1
30+00 TO 32+97.66	3	0.001	3	3	0.1	0.1	0.1
TOTAL	0.018	86	86	86	1.6	1.6	1.6
BDE 64-1A, NEAREST 0.25 AC.	0.25	-	-	-	-	-	-

PAVEMENT MARKINGS				
LOCATION	THERMOPLASTIC			LETTERS AND SYMBOLS
	LINE 4"	LINE 6"	LINE 24"	
STATION TO STATION	FOOT	FOOT	FOOT	SQ FT
2+99 TO 5+00	0	201	0	0
5+00 TO 10+00	0	577	42	0
10+00 TO 15+00	0	635	46	0
15+00 TO 20+00	27	640	28	26
20+00 TO 25+00	77	820	55	0
25+00 TO 30+00	112	1221	69	0
30+00 TO 32+97.66	77	609	22	0
TOTAL	293	4703	262	26

MANHOLE TO BE ADJUSTED		
STATION	OFFSET	QUANTITY
29+31.45	22.4' RT	1
29+38.53	22.4' RT	1
TOTAL		2

MODEL - MODEL NAMES  
FILE NAME - 311111



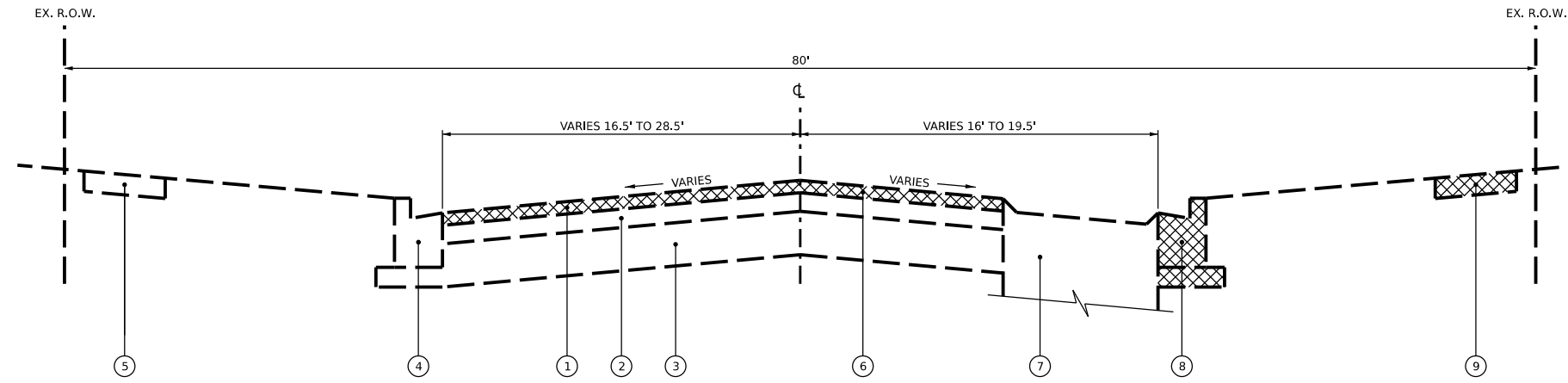
USER NAME = mdavison	DESIGNED - TMH	REVISED -
PLOT SCALE = 1.0000' / in.	DRAWN - MJD	REVISED -
PLOT DATE = 12/21/2022	CHECKED - TMH	REVISED -
	DATE - 12/21/2022	REVISED -

STATE OF ILLINOIS  
DEPARTMENT OF TRANSPORTATION

SUMMARY OF QUANTITIES AND  
SCHEDULE OF QUANTITIES

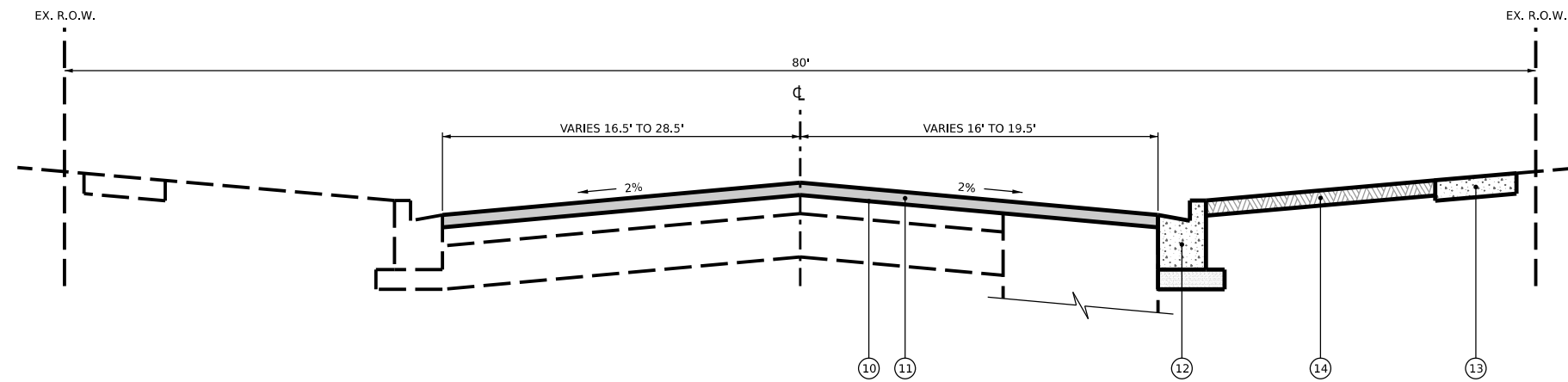
SCALE: N.T.S. SHEET 1 OF 1 SHEETS STA. TO STA.

F.A.U. RTE. 3358 5330	SECTION 21-00084-00-RS	COUNTY DEKALB	TOTAL SHEETS 19	SHEET NO. 3
CONTRACT NO. 87804			ILLINOIS FED. AID PROJECT 3H3F (292)	



- ① EXISTING ASPHALT SURFACE COURSE
- ② EXISTING ASPHALT BINDER COURSE
- ③ EXISTING GRANULAR BASE COURSE
- ④ EXISTING COMBINATION CONCRETE CURB AND GUTTER
- ⑤ EXISTING SIDEWALK
- ⑥ HMA SURFACE REMOVAL, 2"
- ⑦ EXISTING CLASS D PATCH 2" BELOW FINAL GRADE
- ⑧ COMBINATION CURB & GUTTER REMOVAL (AS SHOWN ON PAVING AND RESTORATION PLANS)
- ⑨ SIDEWALK REMOVAL (AS SHOWN ON PAVING AND RESTORATION PLANS)

EXISTING TYPICAL SECTION - DEKALB AVENUE / ELM STREET  
STA 2+99 TO 32+98



- ⑩ PROPOSED BITUMINOUS MATERIALS (TACK) - 0.05 LB/SF FOR MILLED HMA/CONCRETE (TACK) - 0.025 LB/SF FOR HMA LIFTS (PRIME) - 0.25 LB/SF FOR AGGREGATE BASES
- ⑪ PROPOSED HOT-MIX ASPHALT SURFACE COURSE MIX "D", N50 (IL-9.5 mm), 2"
- ⑫ COMBINATION CURB & GUTTER, TYPE B-6.12 (AS SHOWN ON PAVING AND RESTORATION PLANS)
- ⑬ PCC SIDEWALK, 5" (AS SHOWN ON PAVING AND RESTORATION PLANS)
- ⑭ TOPSOIL FURNISH AND PLACE, 4" SEEDING, CLASS 1A, FERTILIZER EROSION CONTROL BLANKET (AS SHOWN ON PAVING AND RESTORATION PLANS)

PROPOSED TYPICAL SECTION - DEKALB AVENUE / ELM STREET  
STA 2+99 TO 32+98

HMA MIXTURE REQUIREMENT TABLE

LOCATIONS:	ENTIRE PROJECT
MIXTURE USE(S):	HMA SURFACE
BINDER GRADE (PG):	PG 64-22
DESIGN AIR VOIDS:	4.0% @ N50
MIXTURE COMPOSITION (MIXTURE GRADATION):	IL 9.5
FRICTION AGGREGATE:	MIXTURE D
MIXTURE WEIGHT:	112.0 LB/SY/IN
QUALITY MANAGEMENT PROGRAM:	QCQA
SUBLOT SIZE:	N/A
DENSITY TEST METHOD:	CORES
MATERIAL TRANSFER DEVICE (REQUIRED):	NO

MODEL AND DIMENSIONS FILE NAME: 311111



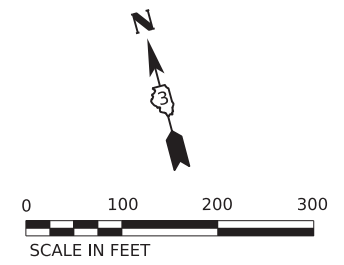
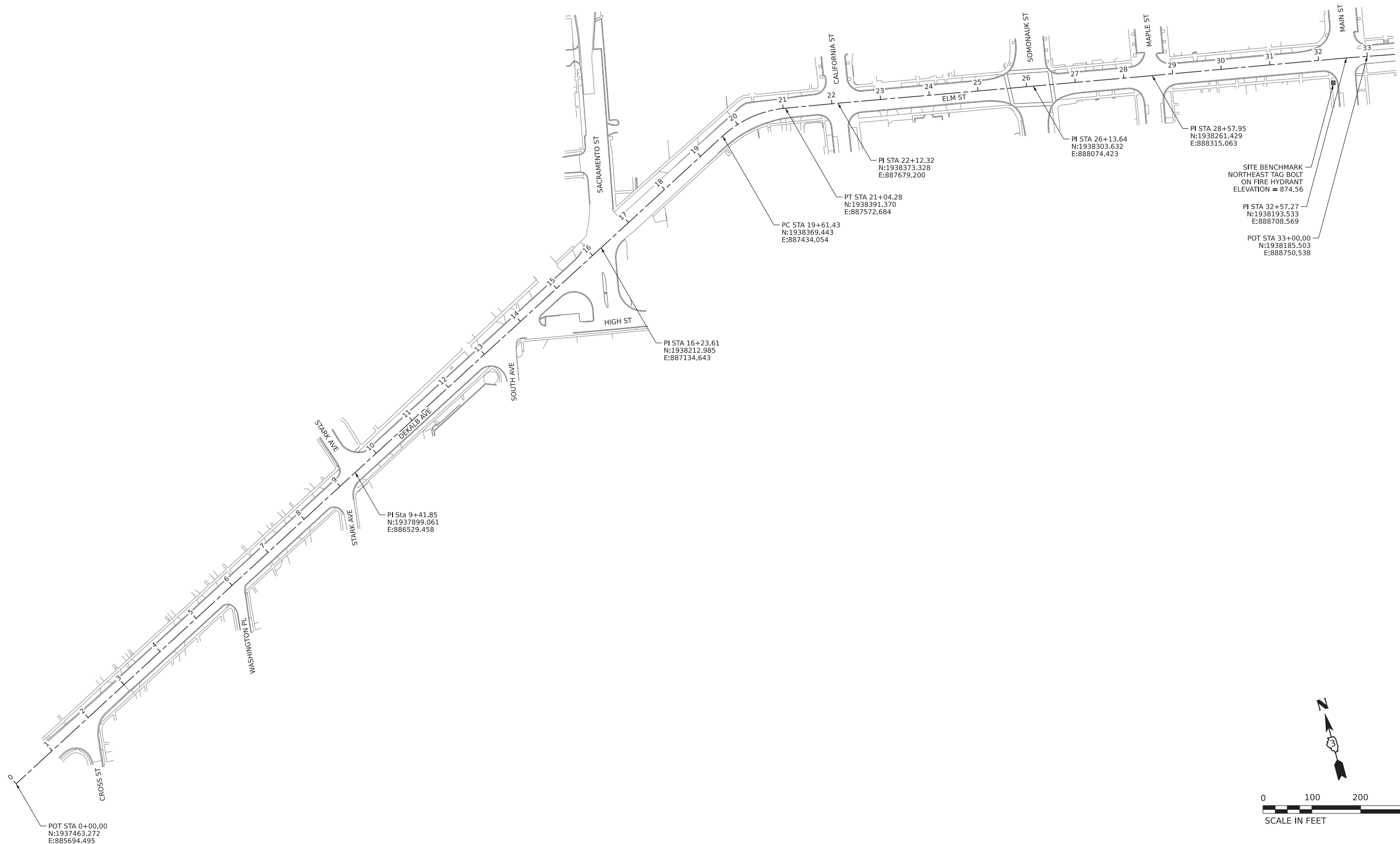
USER NAME	mdavison	DESIGNED	TMH	REVISED	-
DRAWN	MJD	CHECKED	TMH	REVISED	-
PLOT SCALE	2,0000' / in.	DATE	1/25/2023	REVISED	-
PLOT DATE	1/25/2023				

STATE OF ILLINOIS  
DEPARTMENT OF TRANSPORTATION

TYPICAL SECTIONS

SCALE: N.T.S. SHEET 1 OF 1 SHEETS STA. TO STA.

F.A.U. RTE.	SECTION	COUNTY	TOTAL SHEETS	SHEET NO.
5358 5330	21-00084-00-R5	DEKALB	19	4
CONTRACT NO. 87804			ILLINOIS FED. AID PROJECT 3H3F (292)	



MODEL: 4100DEKALB.RAS  
 FILE NAME: 31E1E3



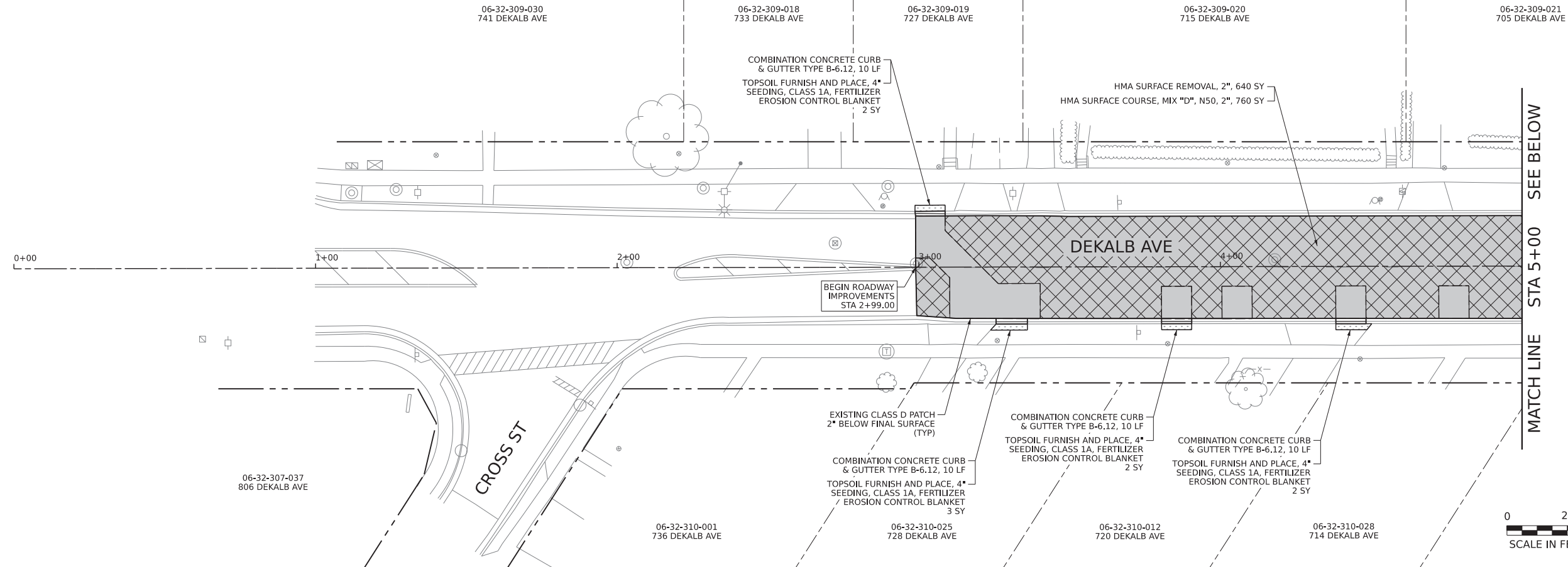
USER NAME = mdavison	DESIGNED - TMH	REVISED -
PLOT SCALE = 100.0000' / in.	DRAWN - MJD	REVISED -
PLOT DATE = 12/21/2022	CHECKED - TMH	REVISED -
	DATE - 12/21/2022	REVISED -

STATE OF ILLINOIS  
DEPARTMENT OF TRANSPORTATION

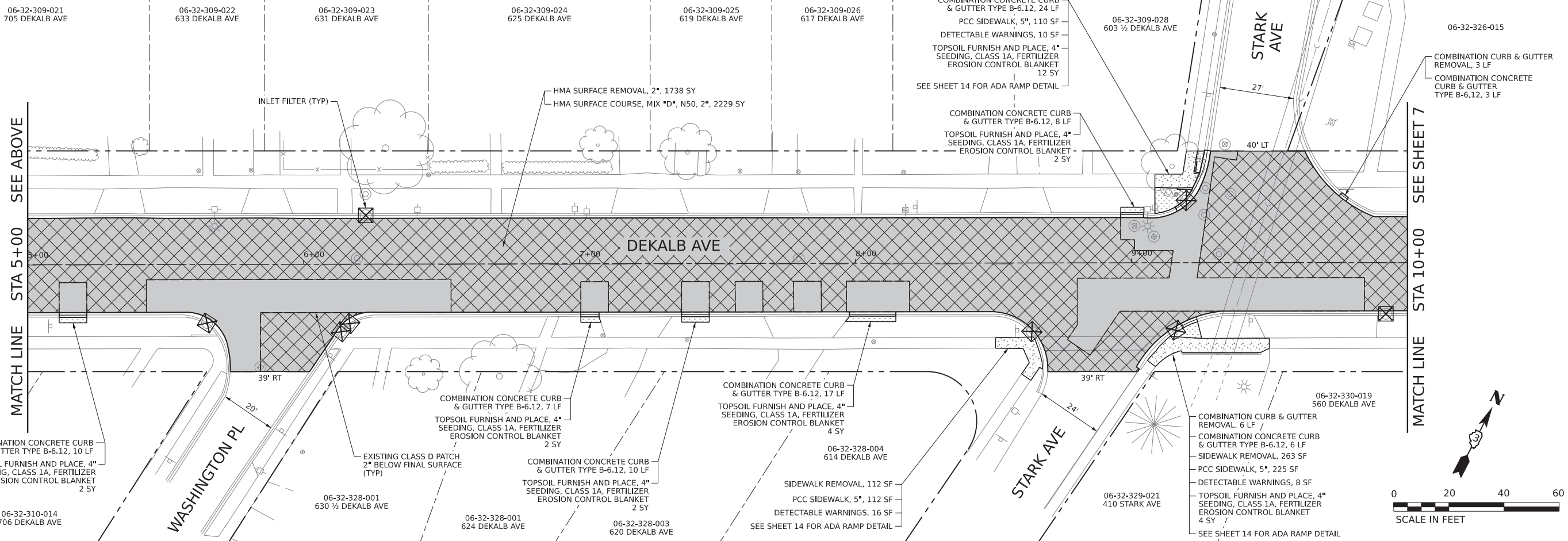
ALIGNMENT AND BENCHMARKS

SCALE: 1" = 100' SHEET 1 OF 1 SHEETS STA. 0+00.00 TO STA. 33+00.00

F.A.U. RTE.	SECTION	COUNTY	TOTAL SHEETS	SHEET NO.
5358 5330	21-00084-00-R5	DEKALB	19	5
CONTRACT NO. 87804				
ILLINOIS		FED. AID PROJECT 3H3F (292)		



MATCH LINE STA 5+00 SEE BELOW



MATCH LINE STA 5+00 SEE ABOVE

MATCH LINE STA 10+00 SEE SHEET 7



MODEL & MODELNAME\$  
FILE NAME\$ SITELE\$



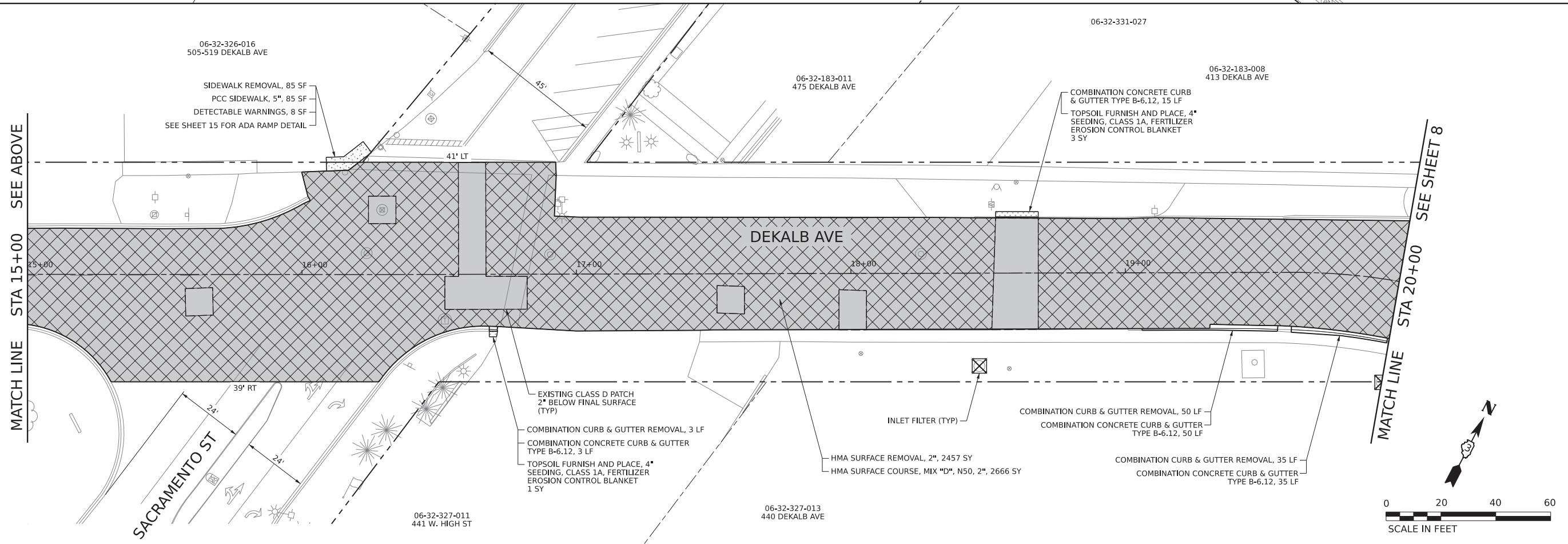
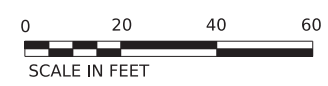
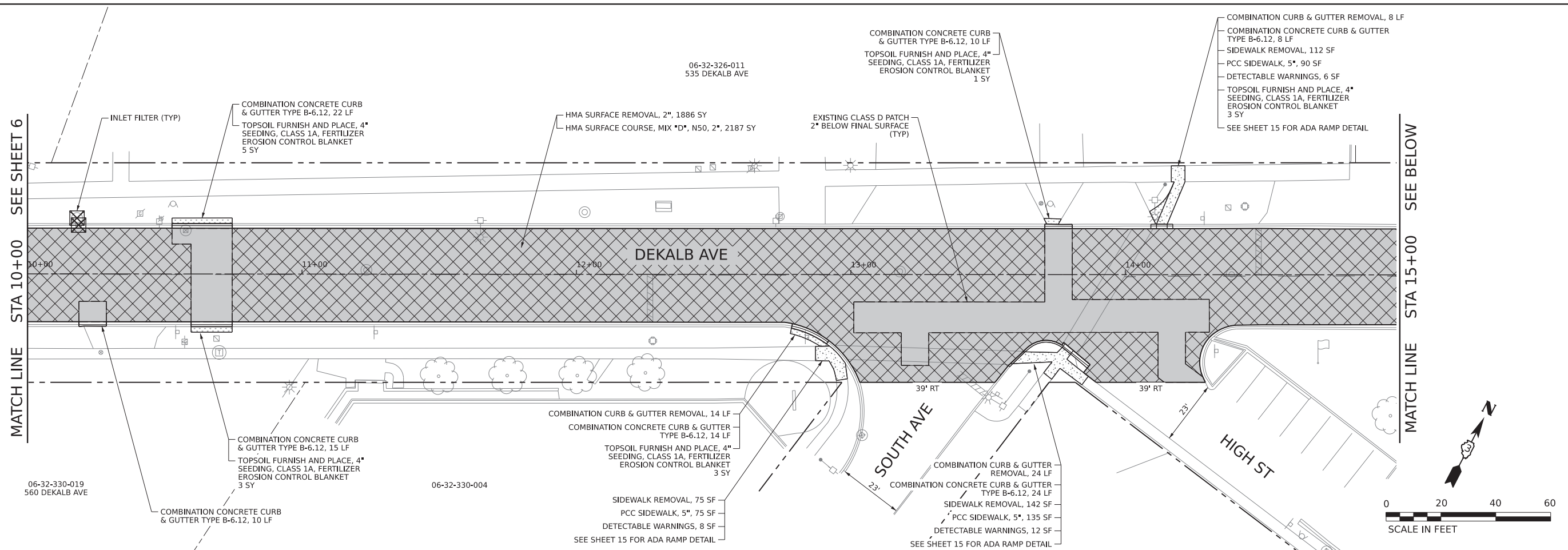
USER NAME = mdavison	DESIGNED - TMH	REVISED -
	DRAWN - MJD	REVISED -
PLOT SCALE = 20.0000' / in.	CHECKED - TMH	REVISED -
PLOT DATE = 12/21/2022	DATE - 12/21/2022	REVISED -

**STATE OF ILLINOIS  
DEPARTMENT OF TRANSPORTATION**

**PAVING AND RESTORATION  
DEKALB AVENUE - STA 0+00 TO STA 10+00**

SCALE: 1" = 20'    SHEET 1 OF 4 SHEETS    STA. 0+00.00 TO STA. 10+00.00

F.A.U. RTE. 5358 5330	SECTION 21-00084-00-R5	COUNTY DEKALB	TOTAL SHEETS 19	SHEET NO. 6
ILLINOIS			CONTRACT NO. 87804	
FED. AID PROJECT 3H3F (292)				



MODEL & MODEL NAMES  
FILE NAMES: ST1E13



USER NAME = mdavison	DESIGNED - TMH	REVISED -
	DRAWN - MJD	REVISED -
PLOT SCALE = 20.0000' / in.	CHECKED - TMH	REVISED -
PLOT DATE = 12/21/2022	DATE - 12/21/2022	REVISED -

**STATE OF ILLINOIS  
DEPARTMENT OF TRANSPORTATION**

**PAVING AND RESTORATION  
DEKALB AVENUE - STA 10+00 TO STA 20+00**

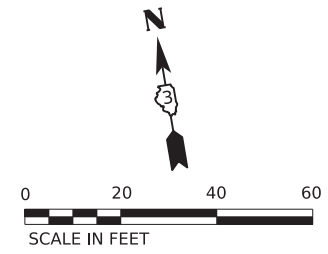
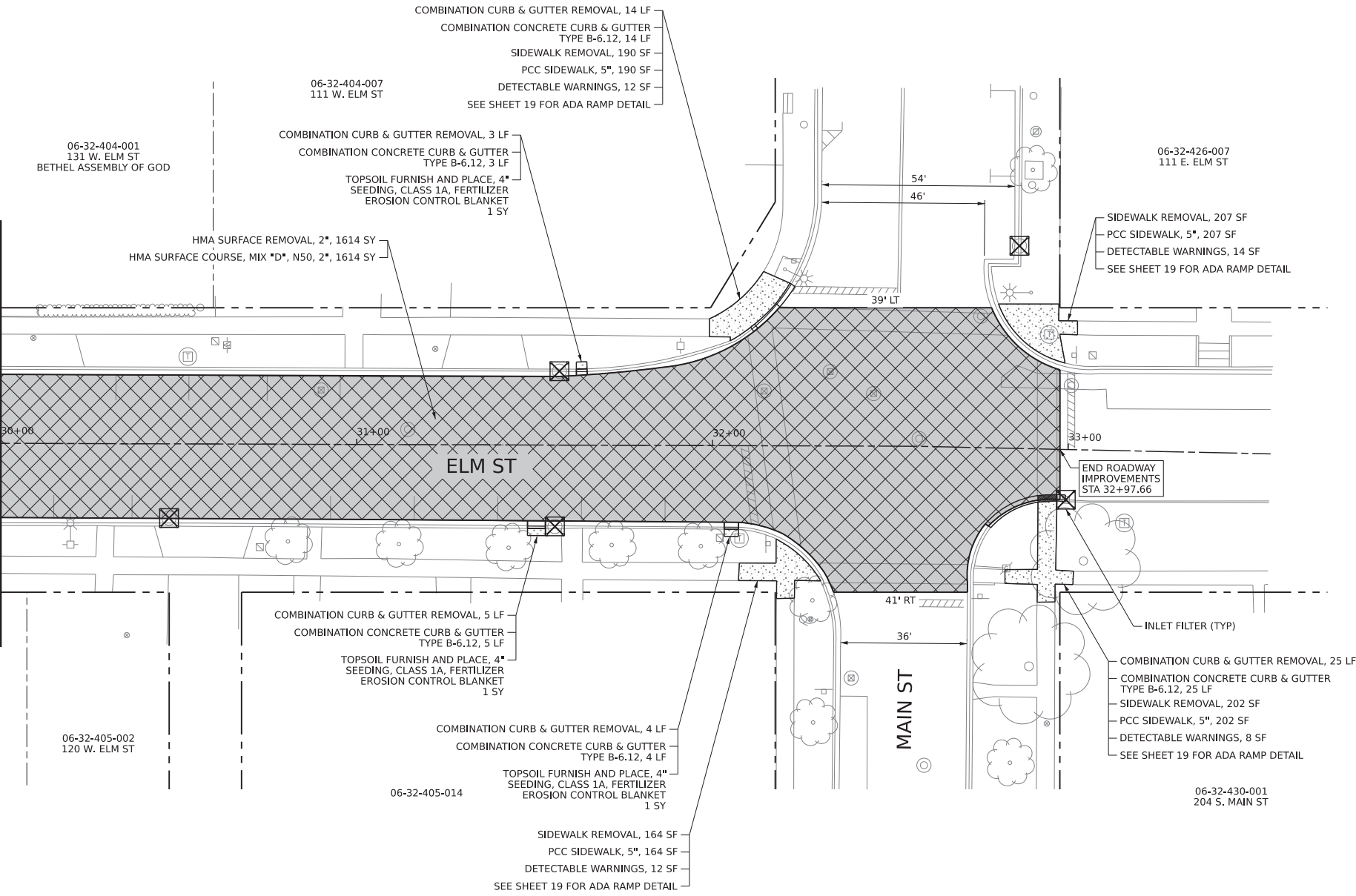
SCALE: 1" = 20'    SHEET 2    OF 4    SHEETS    STA. 10+00.00    TO STA. 20+00.00

F.A.U. RTE. 5358 5330	SECTION 21-00084-00-R5	COUNTY DEKALB	TOTAL SHEETS 19	SHEET NO. 7
CONTRACT NO. 87804			ILLINOIS FED. AID PROJECT 3H3F (292)	





MATCH LINE STA 30+00 SEE SHEET 8



MODEL: 4100ELMAMES  
FILE NAME: 31ELE3



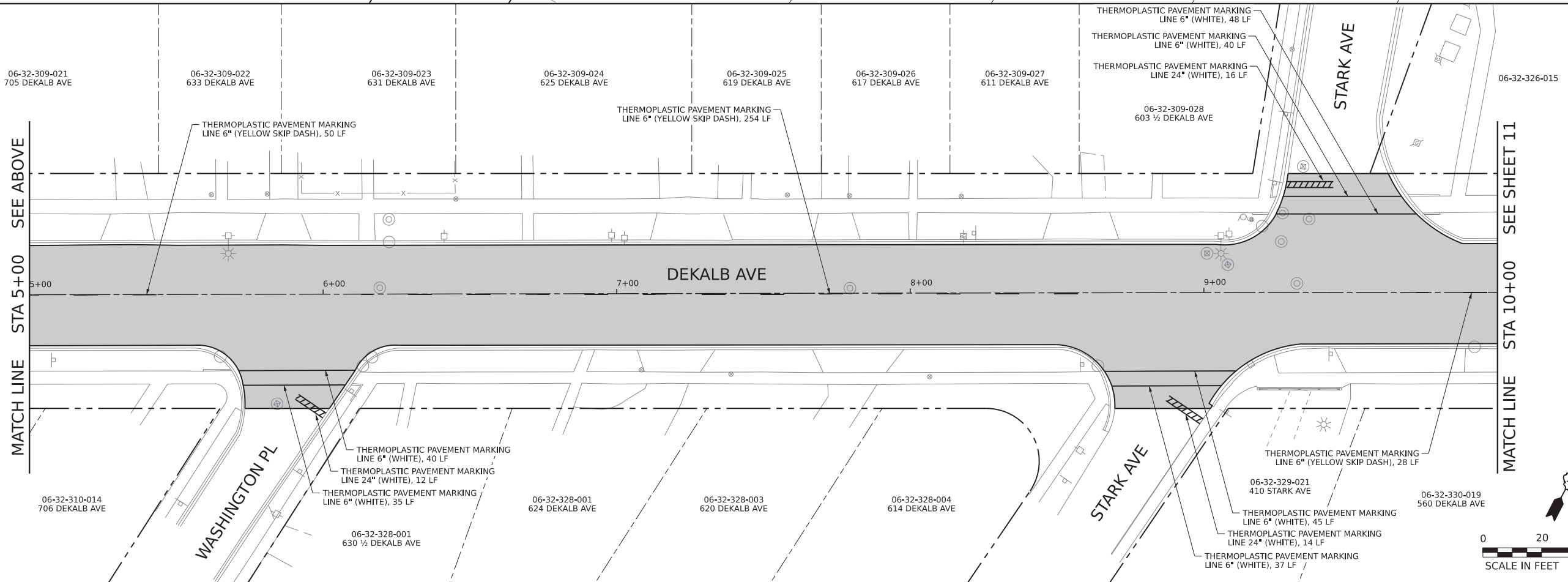
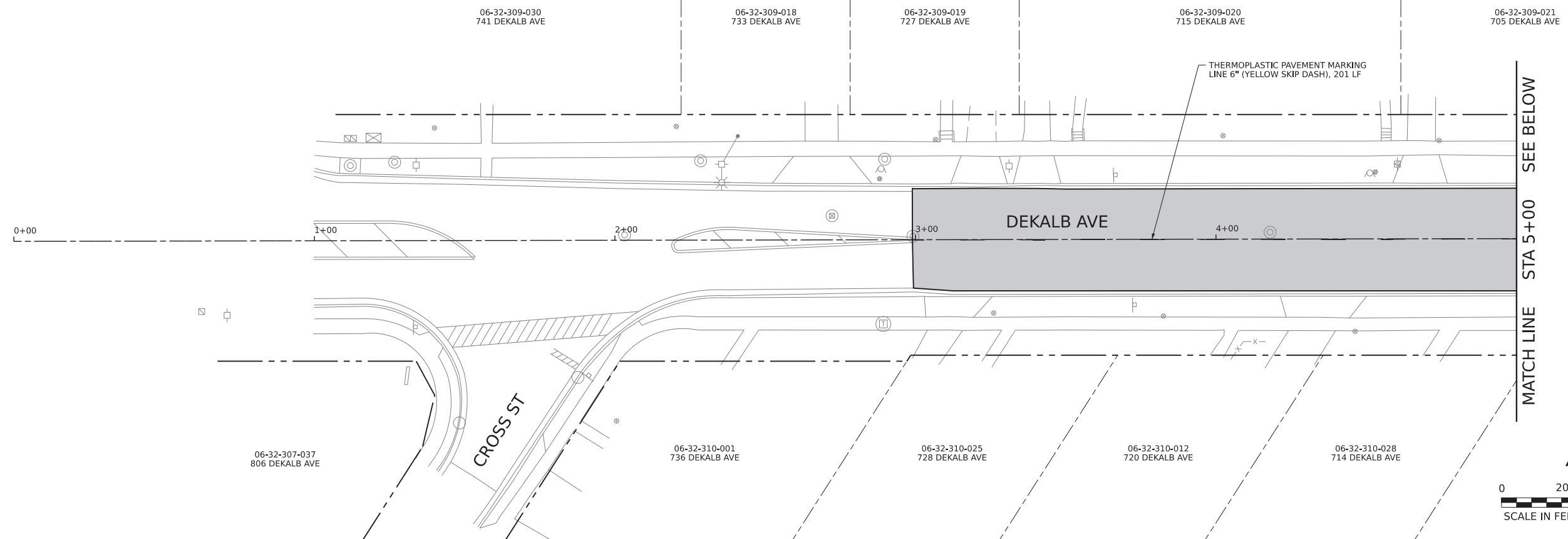
USER NAME = mdavison	DESIGNED - TMH	REVISED -
DRAWN - MJD	REVISED -	
PLOT SCALE = 20.0000' / in.	CHECKED - TMH	REVISED -
PLOT DATE = 12/21/2022	DATE - 12/21/2022	REVISED -

STATE OF ILLINOIS  
DEPARTMENT OF TRANSPORTATION

PAVING AND RESTORATION  
ELM STREET - STA 30+00 TO STA 33+00

SCALE: 1" = 20' SHEET 4 OF 4 SHEETS STA. 30+00.00 TO STA. 33+00.00

F.A.U. RTE.	SECTION	COUNTY	TOTAL SHEETS	SHEET NO.
5358 5330	21-00084-00-R5	DEKALB	19	9
ILLINOIS			CONTRACT NO. 87804	
			FED. AID PROJECT 3H3F (292)	



MODEL: 4100DEKALB.MXD  
FILE NAME: 311E13

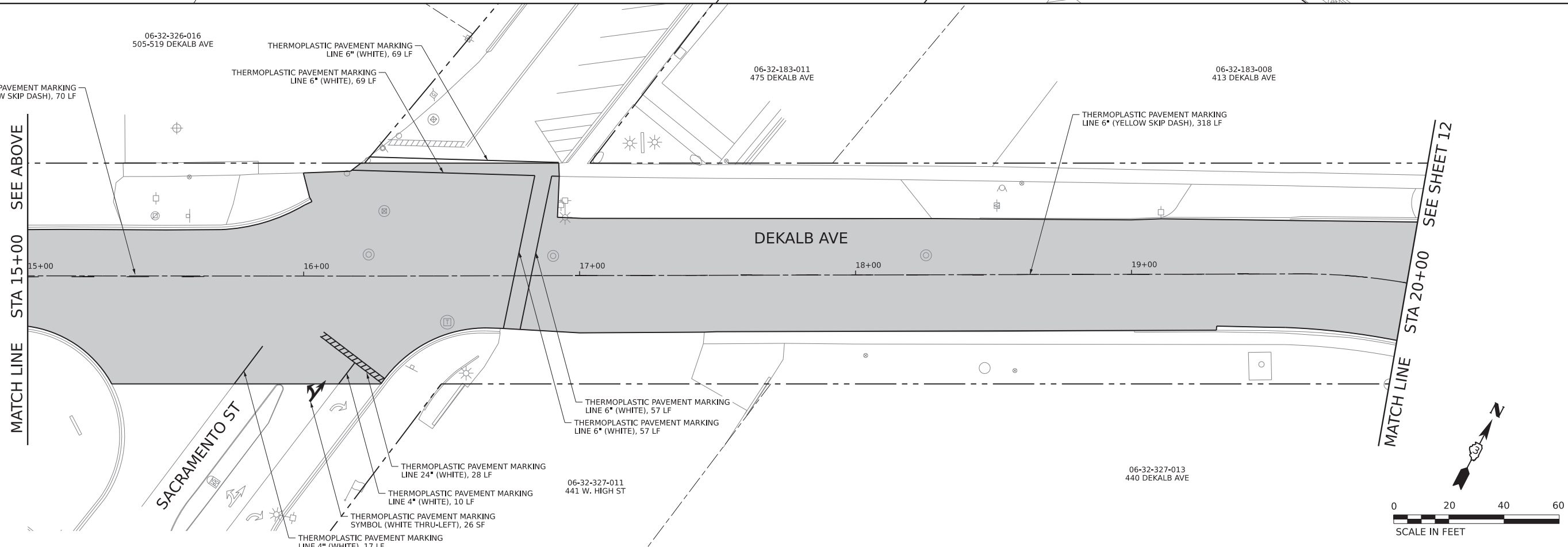
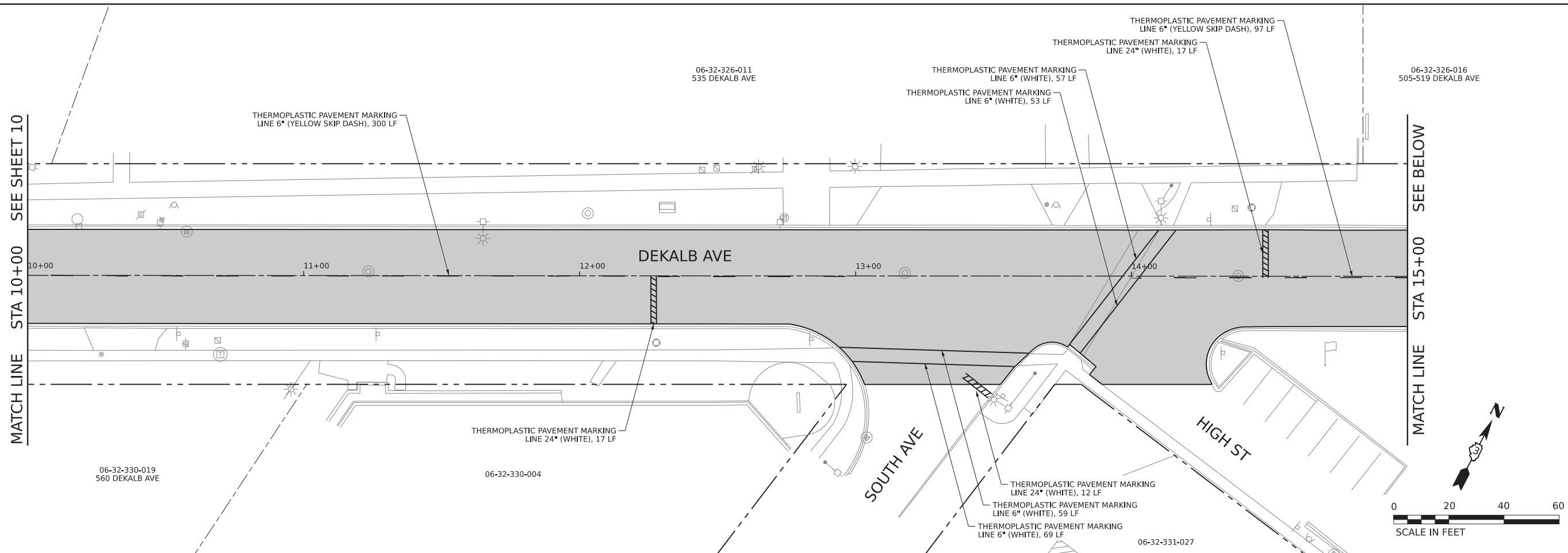


USER NAME = mdavison	DESIGNED - TMH	REVISED -
	DRAWN - MJD	REVISED -
PLOT SCALE = 20.0000' / in.	CHECKED - TMH	REVISED -
PLOT DATE = 12/21/2022	DATE - 12/21/2022	REVISED -

**STATE OF ILLINOIS  
DEPARTMENT OF TRANSPORTATION**

<b>PAVEMENT MARKING PLAN</b>			
<b>DEKALB AVENUE - STA 0+00 TO STA 10+00</b>			
SCALE: 1" = 20'	SHEET 1	OF 4 SHEETS	STA. 0+00.00 TO STA. 10+00.00

F.A.U. RTE. 5358 5330	SECTION 21-00084-00-R5	COUNTY DEKALB	TOTAL SHEETS 19	SHEET NO. 10
CONTRACT NO. 87804				ILLINOIS
FED. AID PROJECT 3H3F (292)				



MODEL: 4100DEKALB.MXD  
FILE NAME: 4100DEKALB.DWG

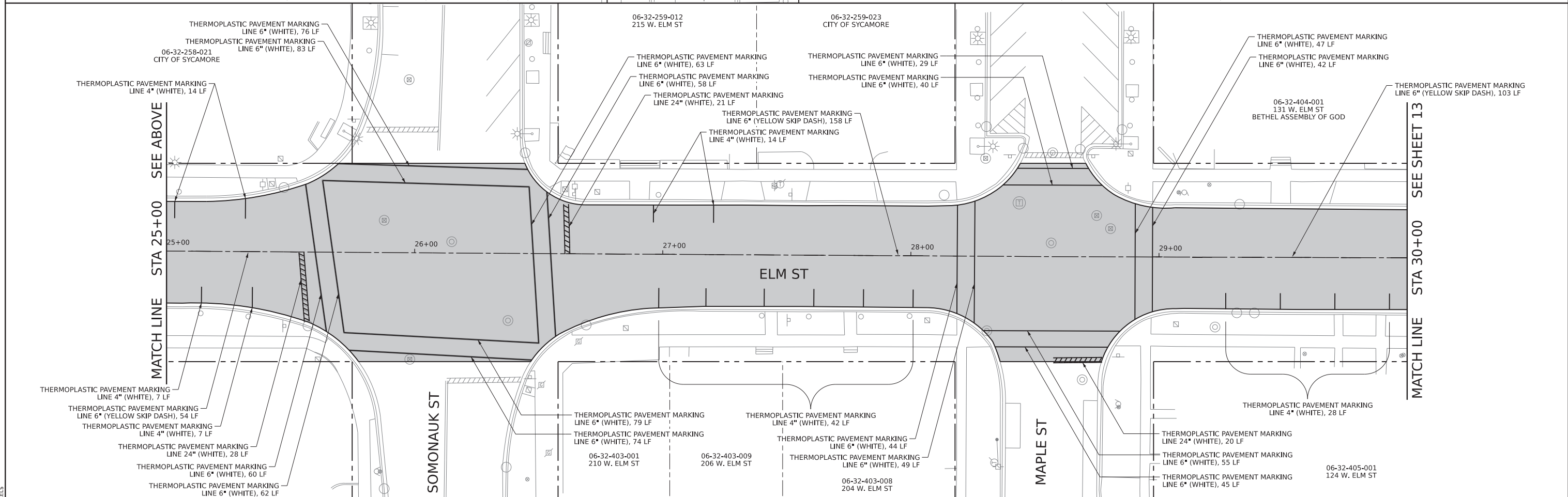
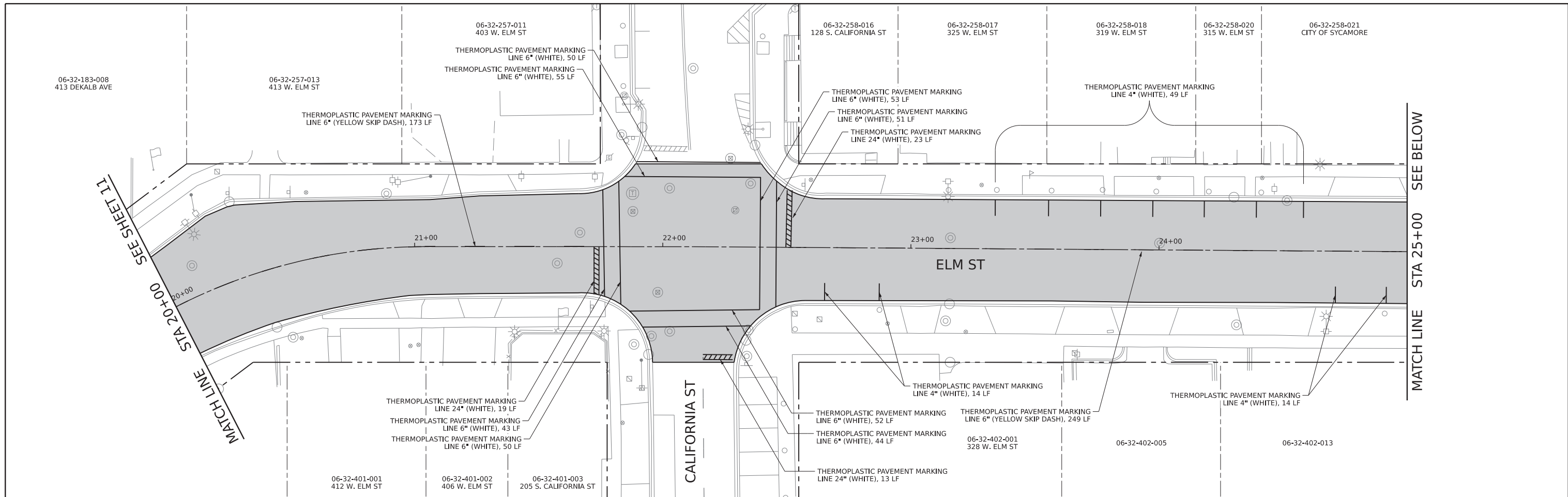


USER NAME = mdavison	DESIGNED - TMH	REVISED -
DRAWN - MJD	REVISOR -	
CHECKED - TMH	REVISOR -	
DATE - 12/21/2022	REVISOR -	

STATE OF ILLINOIS  
DEPARTMENT OF TRANSPORTATION

PAVEMENT MARKING PLAN  
DEKALB AVENUE - STA 10+00 TO STA 20+00  
SCALE: 1" = 20' SHEET 2 OF 4 SHEETS STA. 10+00.00 TO STA. 20+00.00

F.A.U. RTE.	SECTION	COUNTY	TOTAL SHEETS	SHEET NO.
5358 5330	21-00084-00-R5	DEKALB	19	11
CONTRACT NO. 87804				
ILLINOIS FED. AID PROJECT 3H3F (292)				



MODEL: 4400ELMPLAN  
FILE NAME: 4400ELMPLAN



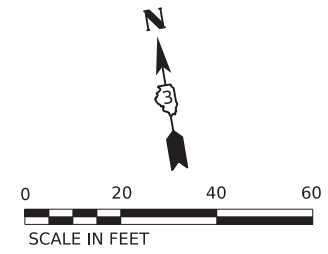
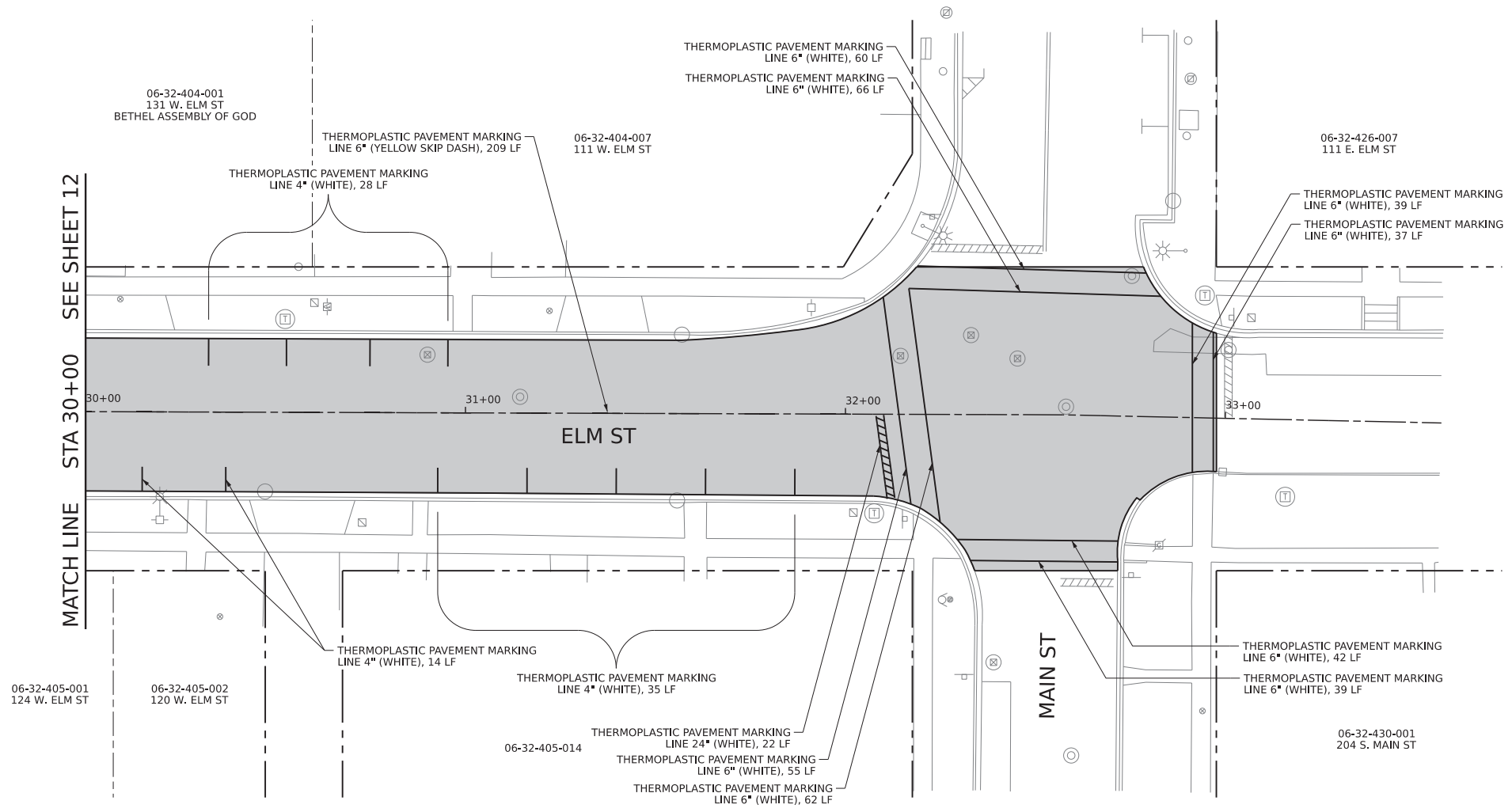
USER NAME = mdavison	DESIGNED - TMH	REVISED -
	DRAWN - MJD	REVISED -
PLOT SCALE = 20.0000' / in.	CHECKED - TMH	REVISED -
PLOT DATE = 12/21/2022	DATE - 12/21/2022	REVISED -

STATE OF ILLINOIS  
DEPARTMENT OF TRANSPORTATION

PAVEMENT MARKING PLAN  
ELM STREET - STA 20+00 TO STA 30+00

SCALE: 1" = 20' SHEET 2 OF 4 SHEETS STA. 20+00.00 TO STA. 30+00.00

F.A.U. RTE. 5358 5330	SECTION 21-00084-00-R5	COUNTY DEKALB	TOTAL SHEETS 19	SHEET NO. 12
CONTRACT NO. 87804			ILLINOIS FED. AID PROJECT 3HF3 (292)	



MODEL: 41001ELM0405  
FILE NAME: ST12L3



USER NAME = mdavison	DESIGNED - TMH	REVISED -
	DRAWN - MJD	REVISED -
PLOT SCALE = 20.0000' / in.	CHECKED - TMH	REVISED -
PLOT DATE = 12/21/2022	DATE - 12/21/2022	REVISED -

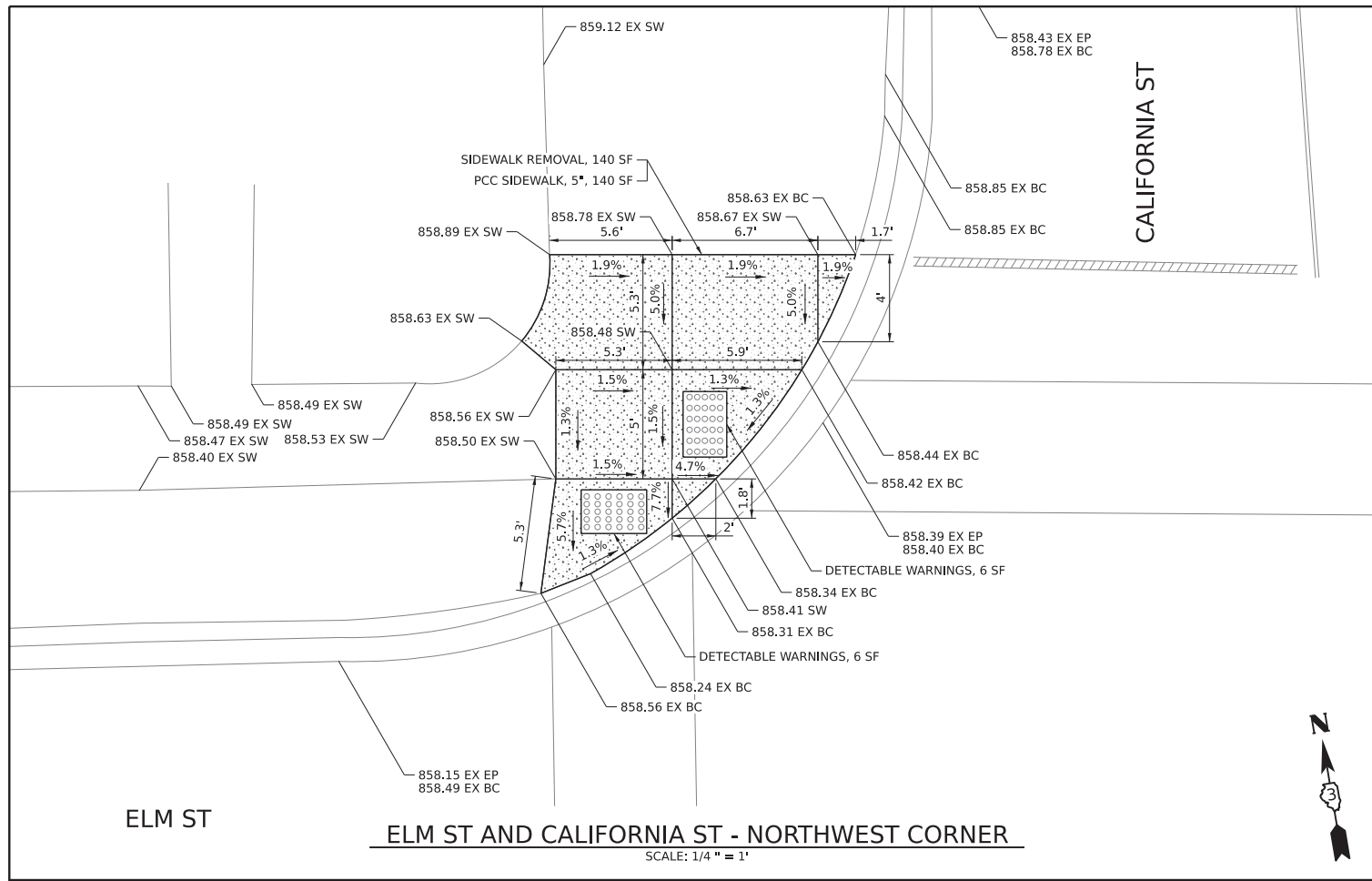
STATE OF ILLINOIS  
DEPARTMENT OF TRANSPORTATION

<b>PAVEMENT MARKING PLAN</b>			
<b>ELM STREET - STA 30+00 TO STA 33+00</b>			
SCALE: 1" = 20'	SHEET 4	OF 4 SHEETS	STA. 30+00.00 TO STA. 33+00.00

F.A.U. RTE.	SECTION	COUNTY	TOTAL SHEETS	SHEET NO.
5358 5330	21-00084-00-R5	DEKALB	19	13
CONTRACT NO. 87804				
ILLINOIS		FED. AID PROJECT 3H3F (292)		

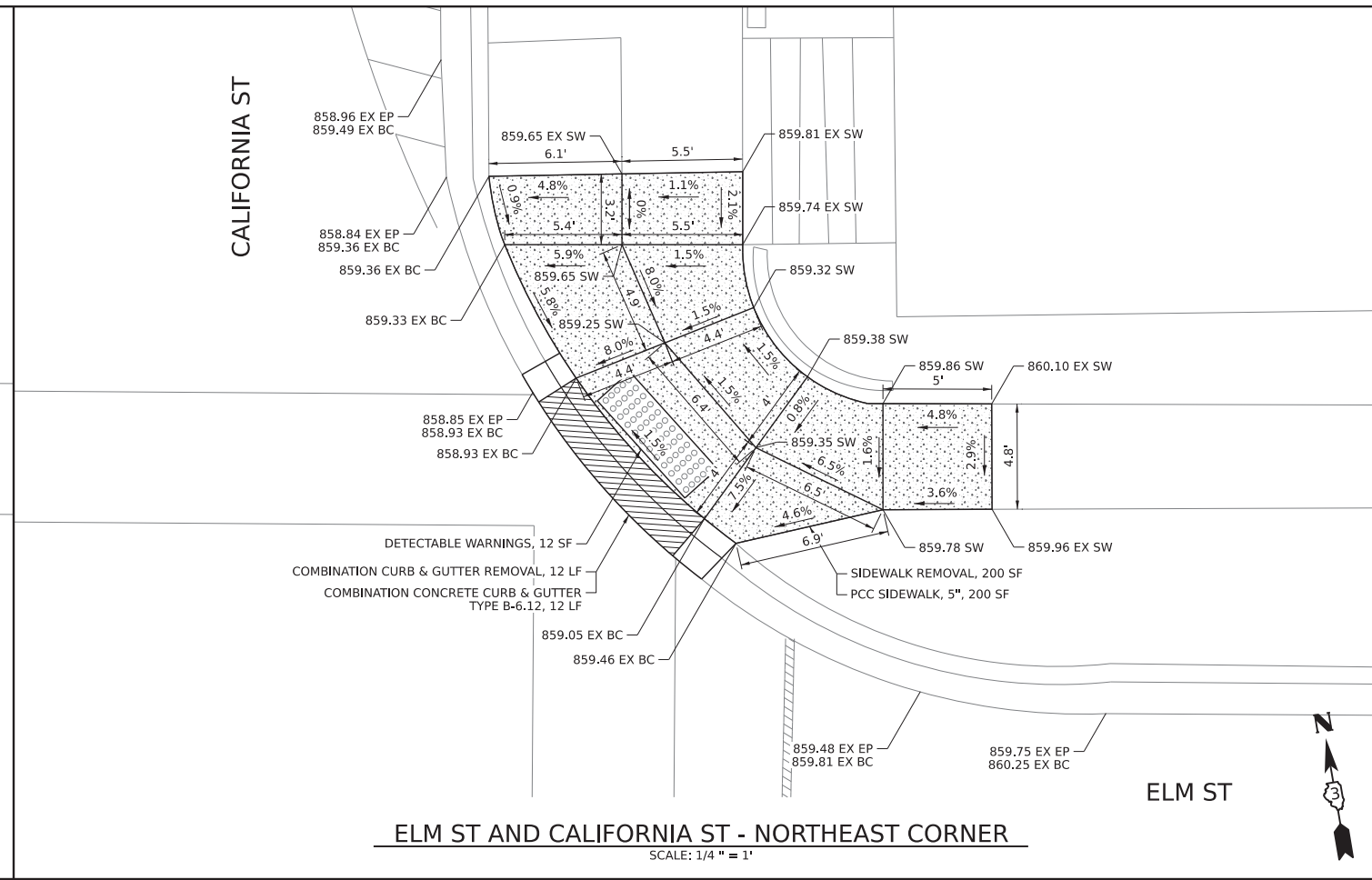






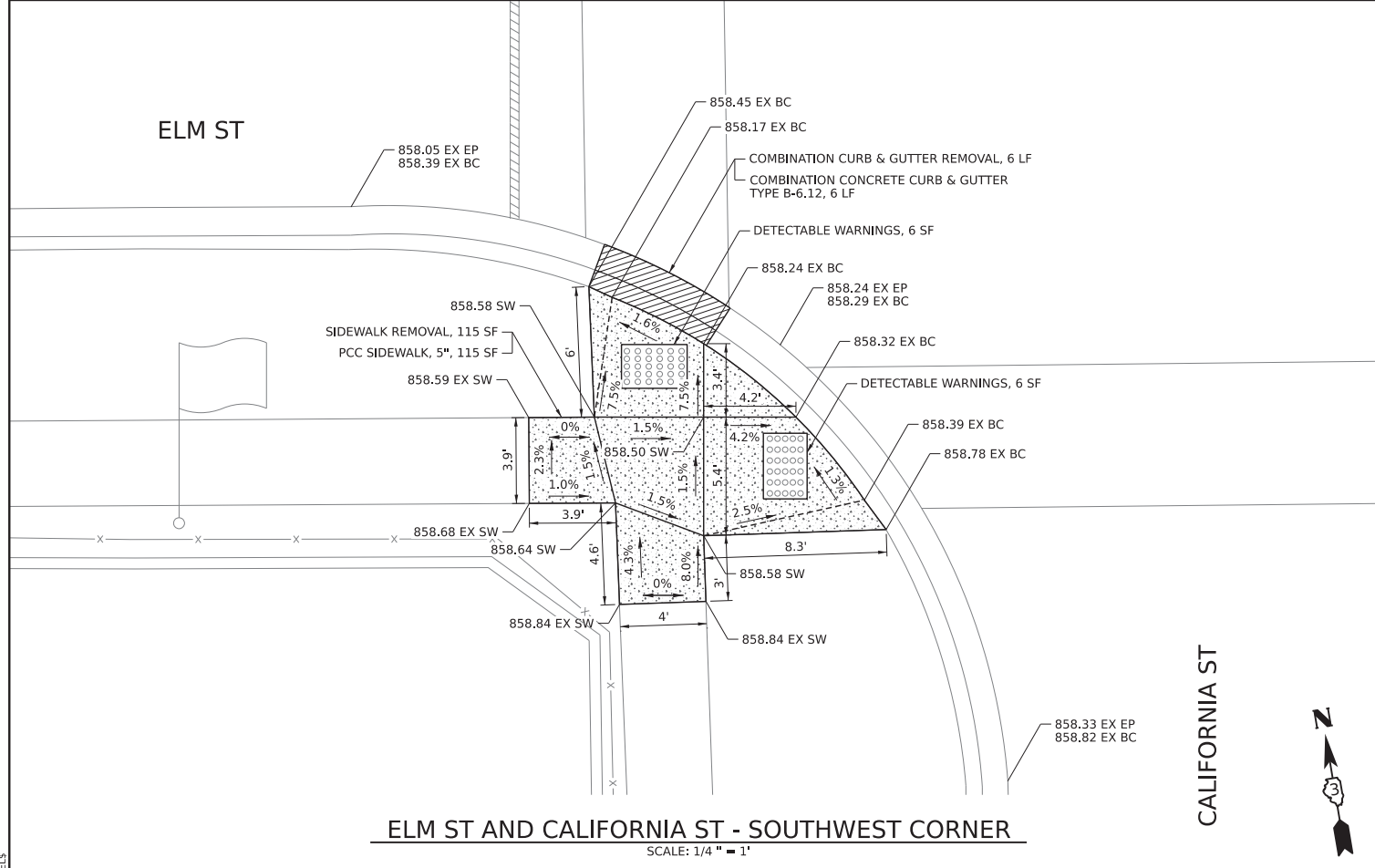
ELM ST AND CALIFORNIA ST - NORTHWEST CORNER

SCALE: 1/4" = 1'



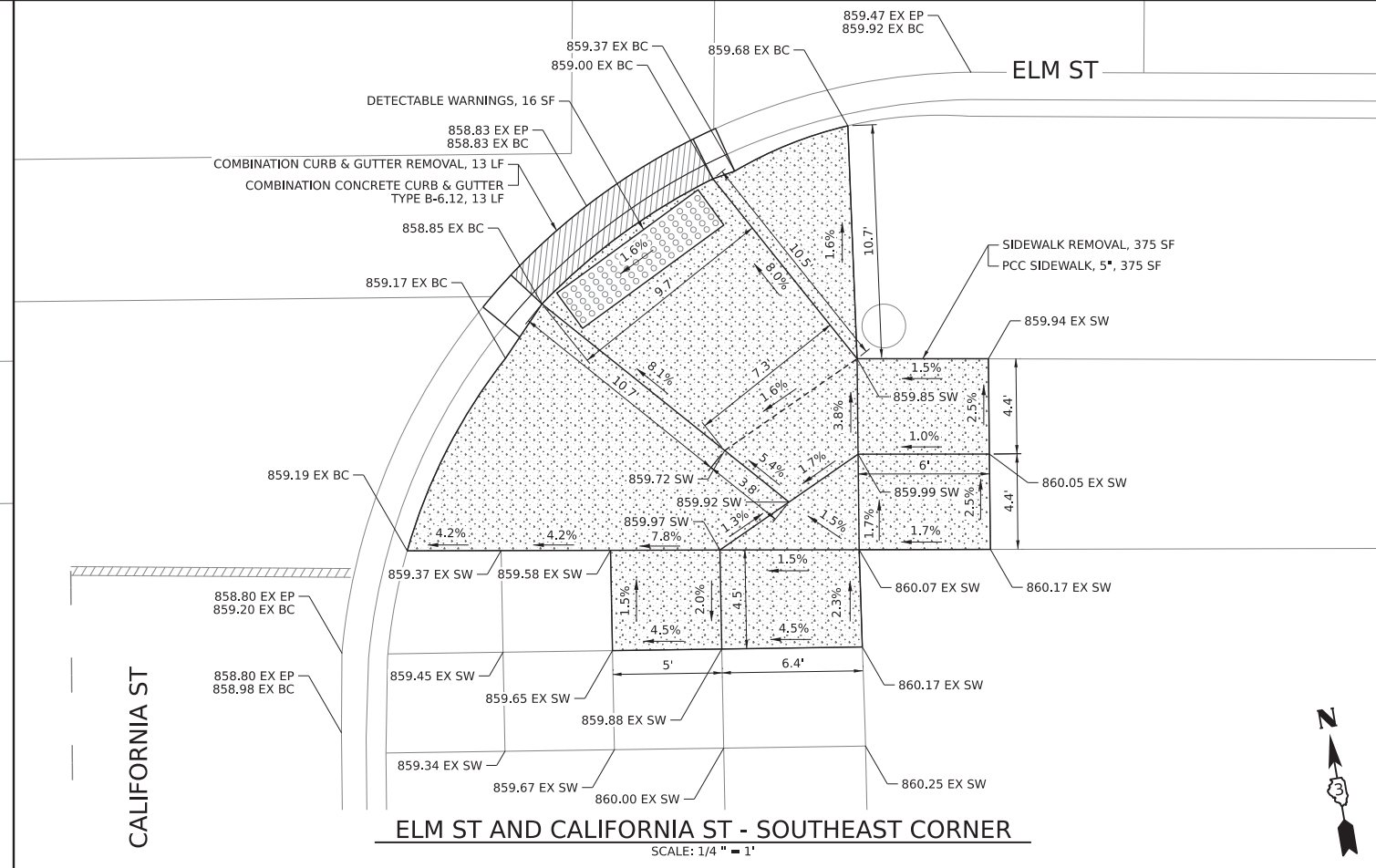
ELM ST AND CALIFORNIA ST - NORTHEAST CORNER

SCALE: 1/4" = 1'



ELM ST AND CALIFORNIA ST - SOUTHWEST CORNER

SCALE: 1/4" = 1'



ELM ST AND CALIFORNIA ST - SOUTHEAST CORNER

SCALE: 1/4" = 1'

MODEL: 4400REPLANES  
FILE NAME: 311EELS



USER NAME = mdavison	DESIGNED - TMH	REVISED -
PLOT SCALE = 4.0000' / in.	DRAWN - MJD	REVISED -
PLOT DATE = 12/21/2022	CHECKED - TMH	REVISED -
	DATE - 12/21/2022	REVISED -

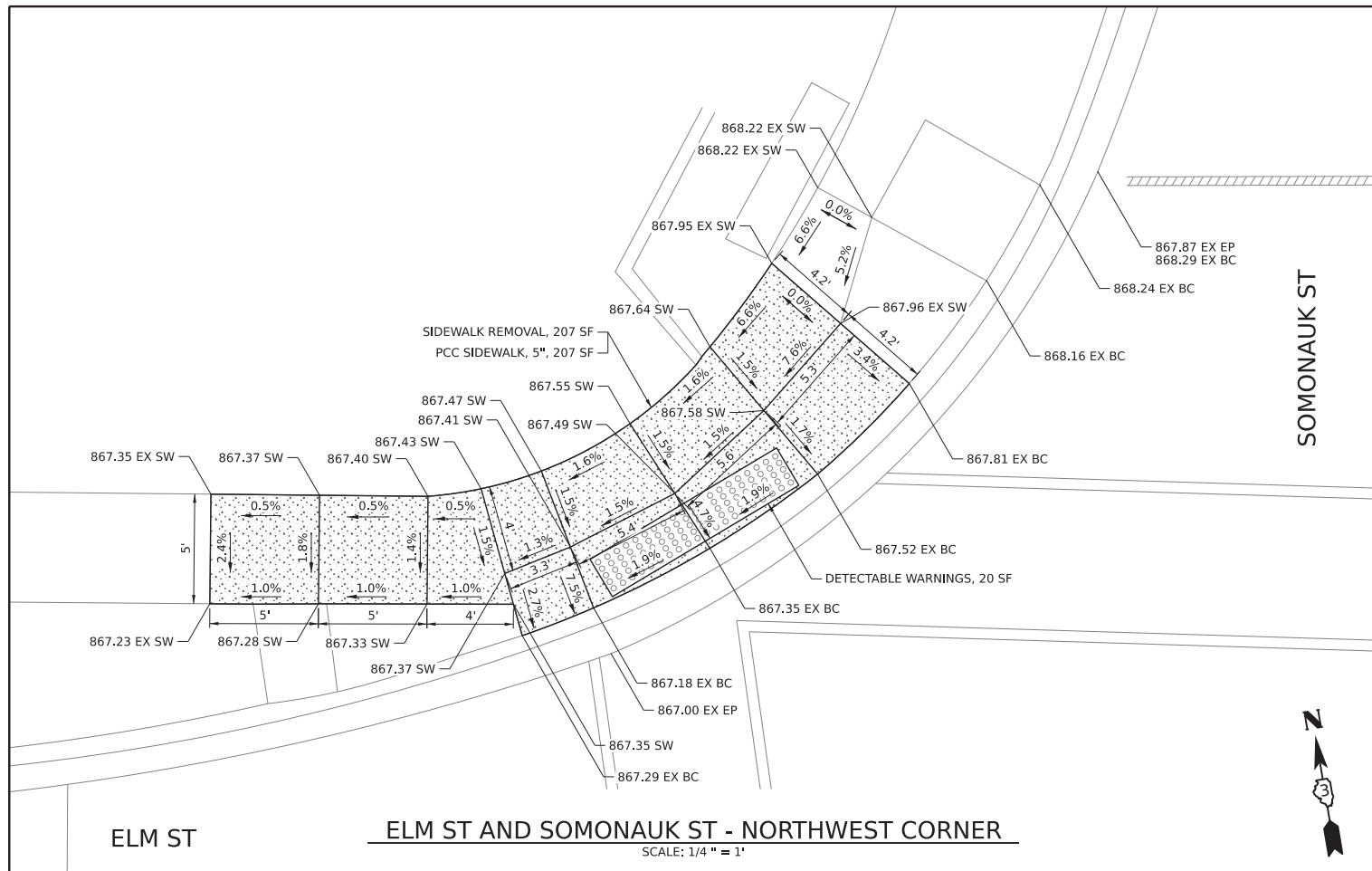
STATE OF ILLINOIS  
DEPARTMENT OF TRANSPORTATION

ADA RAMP DETAILS

SCALE: 1/4" = 1'-0" SHEET 3 OF 6 SHEETS STA. TO STA.

F.A.U. RTE. 5358 5330	SECTION 21-00084-00-R5	COUNTY DEKALB	TOTAL SHEETS 19	SHEET NO. 16
CONTRACT NO. 87804			ILLINOIS FED. AID PROJECT 3H3F (292)	

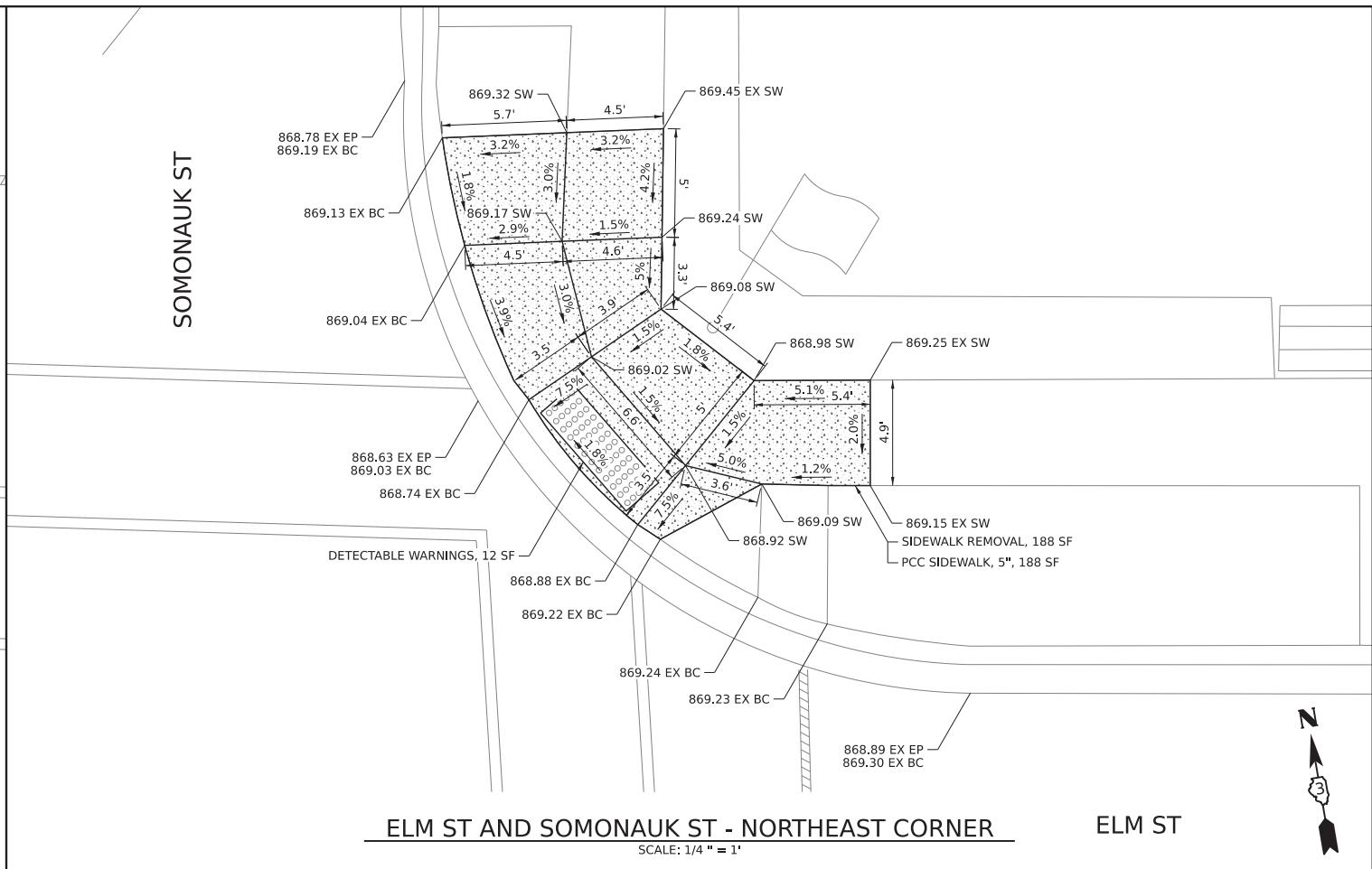




ELM ST

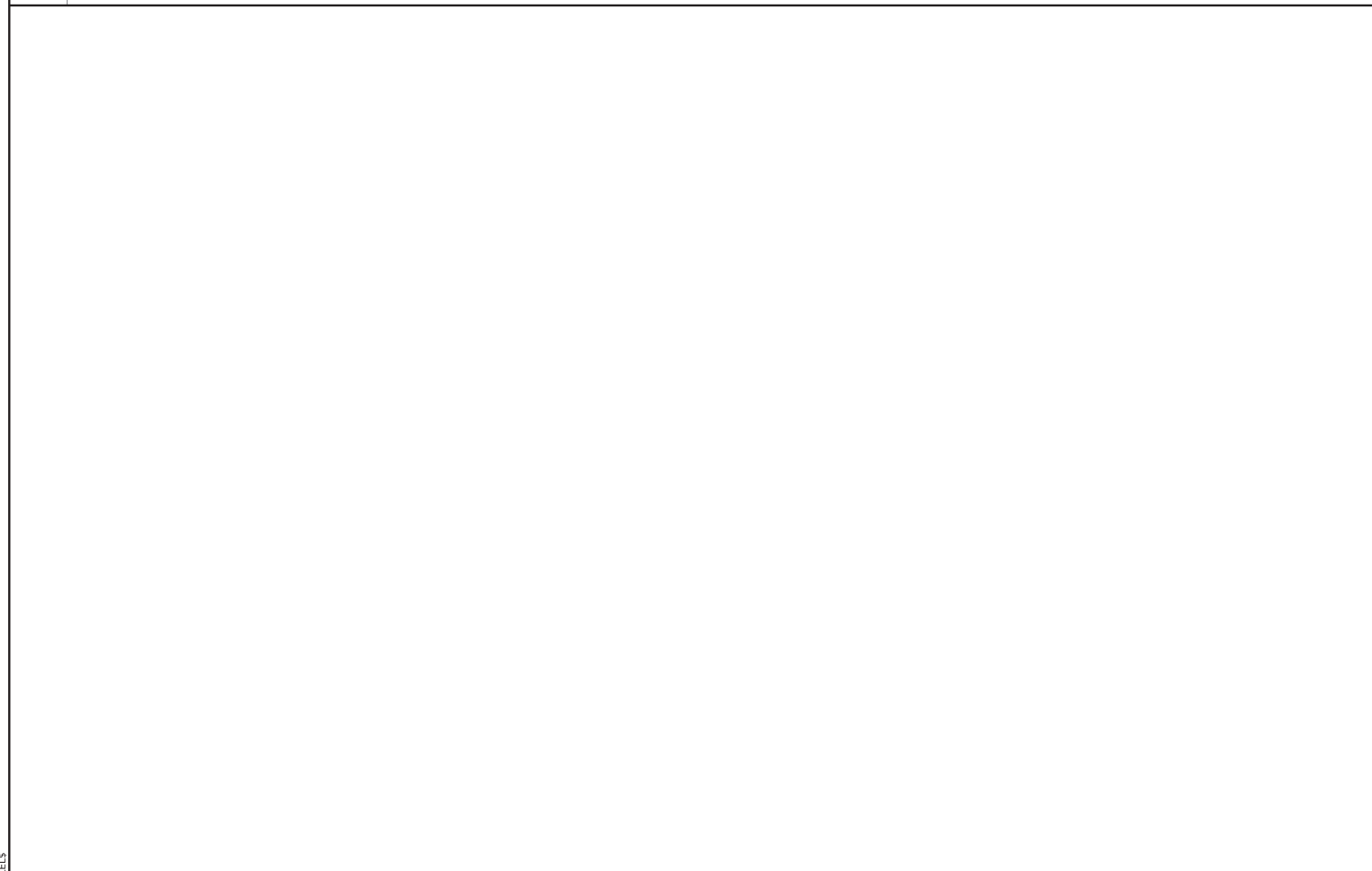
**ELM ST AND SOMONAUK ST - NORTHWEST CORNER**

SCALE: 1/4" = 1'



**ELM ST AND SOMONAUK ST - NORTHEAST CORNER**

SCALE: 1/4" = 1'



**ELM ST AND SOMONAUK ST - SOUTHEAST CORNER**

SCALE: 1/4" = 1'

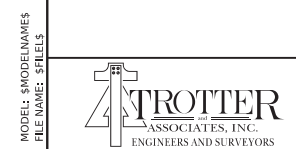
STATE OF ILLINOIS  
DEPARTMENT OF TRANSPORTATION

**ADA RAMP DETAILS**

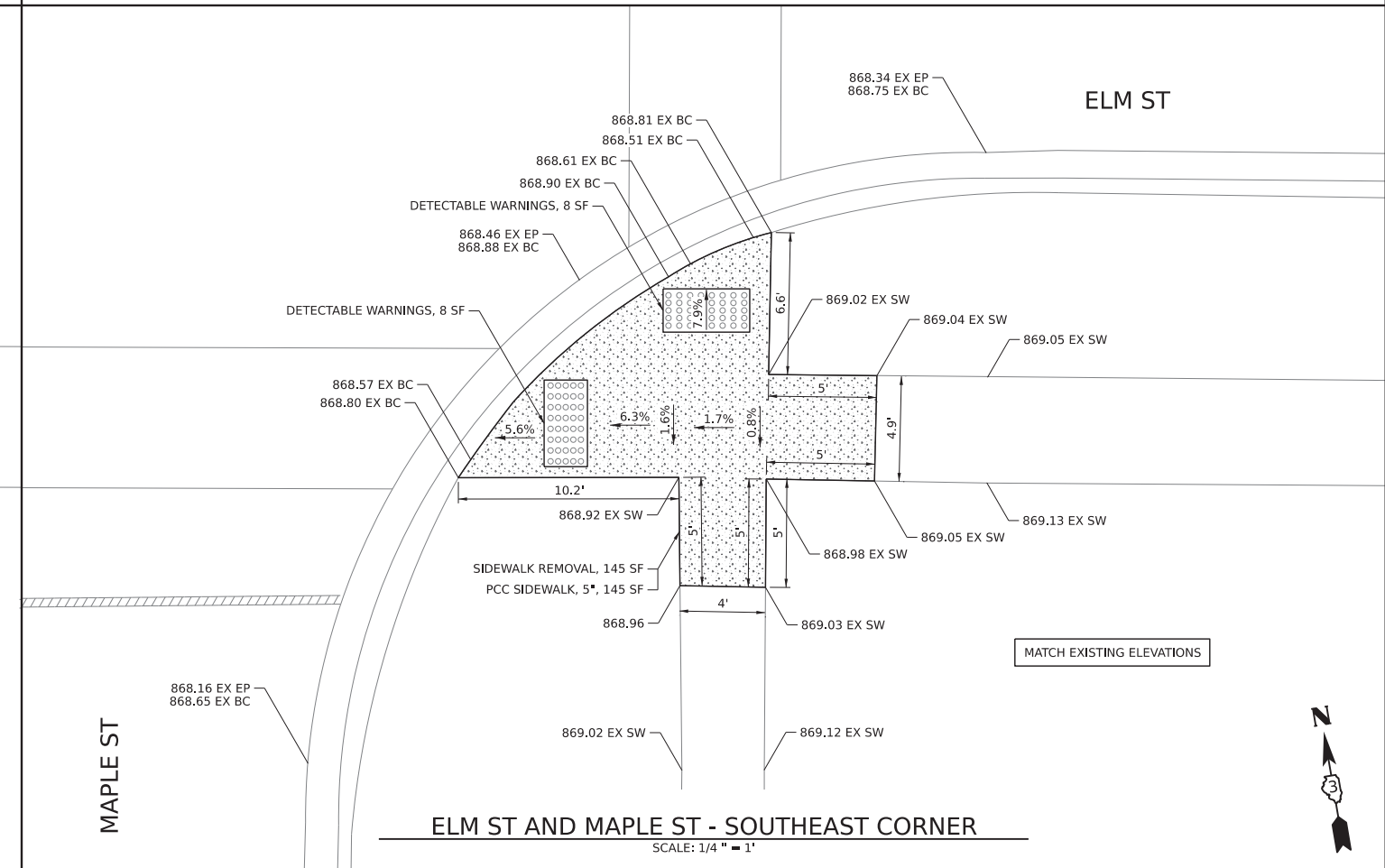
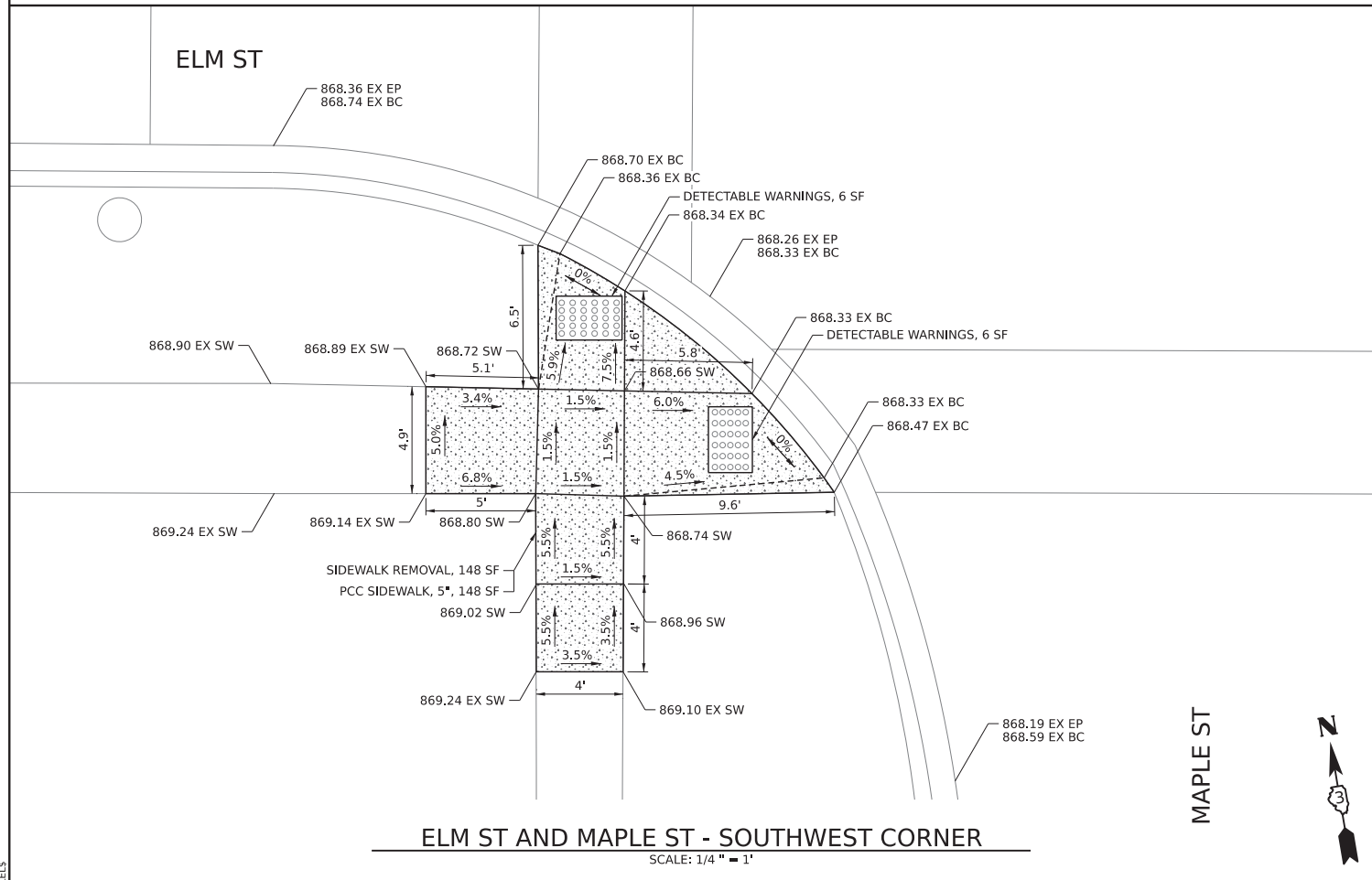
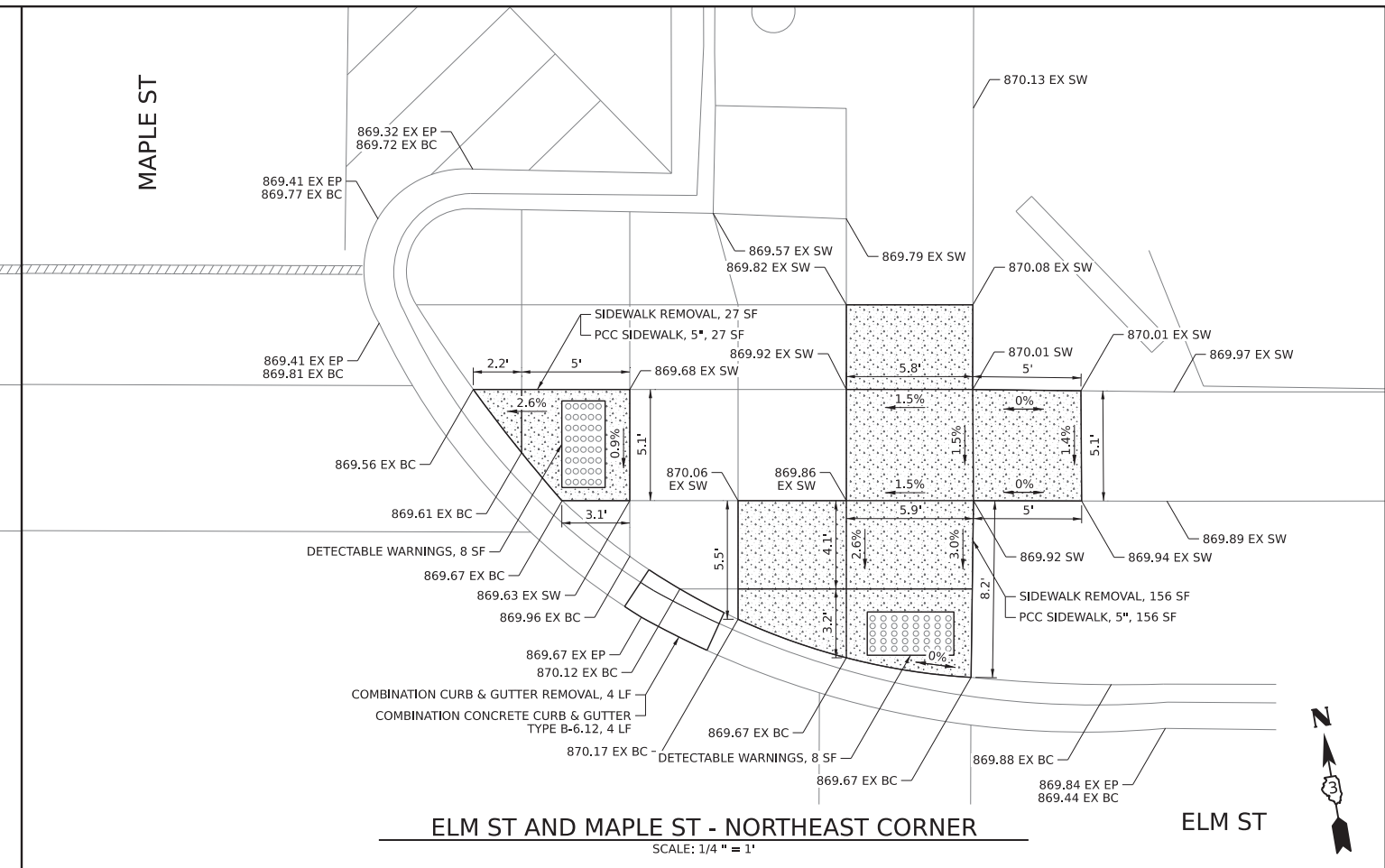
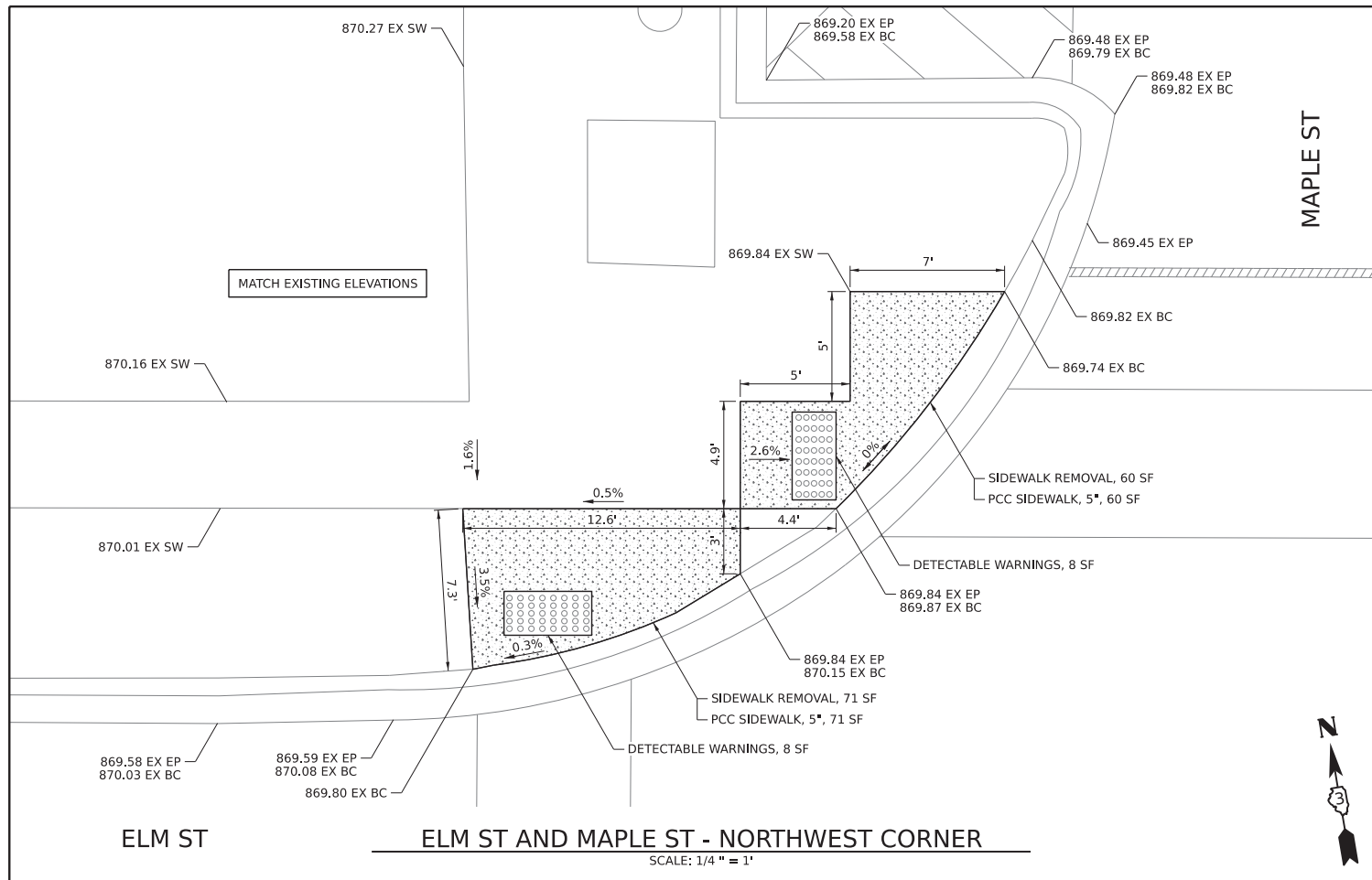
SCALE: 1/4" = 1'-0" SHEET 4 OF 6 SHEETS STA. TO STA.

USER NAME = mdavison	DESIGNED - TMH	REVISED -
DRAWN - MJD	REVISED -	
PLOT SCALE = 4.0000' / in.	CHECKED - TMH	REVISED -
PLOT DATE = 12/21/2022	DATE - 12/21/2022	REVISED -

F.A.U. RTE. 5358 5330	SECTION 21-00084-00-R5	COUNTY DEKALB	TOTAL SHEETS 19	SHEET NO. 17
CONTRACT NO. 87804			ILLINOIS FED. AID PROJECT 3H3F (292)	



MODEL: 4100  
FILE NAME: ST1E13



MODEL: 4400ELMAMES  
FILE NAME: SITE5.DWG



USER NAME = mdavison	DESIGNED - TMH	REVISED -
DRAWN - MJD	REVISOR -	
PLOT SCALE = 4.0000' / in.	CHECKED - TMH	REVISED -
PLOT DATE = 12/21/2022	DATE - 12/21/2022	REVISED -

STATE OF ILLINOIS  
DEPARTMENT OF TRANSPORTATION

ADA RAMP DETAILS

SCALE: 1/4" = 1'-0" SHEET 5 OF 6 SHEETS STA. TO STA.

F.A.U. RTE. 5358 5330	SECTION 21-00084-00-R5	COUNTY DEKALB	TOTAL SHEETS 19	SHEET NO. 18
CONTRACT NO. 87804				ILLINOIS FED. AID PROJECT 3H3F (292)

