

03-10-2023 LETTING ITEM 108

STATE OF ILLINOIS

DEPARTMENT OF TRANSPORTATION

PLANS FOR PROPOSED SURFACE TRANSPORTATION/RURAL PROGRAM

LOGAN COUNTY  
 CH 1 (FAS 562)/1600 AVENUE  
 SECTION 18-00108-01-RS  
 PROJECT NO. CU9J(103)  
 JOB NO. C-96-094-21

F.A.S. ATE.	SECTION	COUNTY	TOTAL SHEETS	SHEET NO.
562	18-00108-01-RS	LOGAN	9	1
		ILLINOIS	CONTRACT NO. 93797	

INDEX OF SHEETS

- 1 COVER SHEET
- 2 GENERAL NOTES, LEGEND, PAVEMENT DESIGN INFORMATION, SUMMARY OF QUANTITIES
- 3 TYPICAL SECTIONS
- 4 SCHEDULE OF QUANTITIES
- 5-8 COUNTY HIGHWAY 1 - ROADWAY PLANS
- 9 DETAILS

REQUIRED STANDARDS

- 000001-08 STANDARD SYMBOLS, ABBREVIATIONS, AND PATTERNS
- 701006-05 OFF-RD OPERATIONS, 2L, 2W, 15' (4.5m) TO 24' (600mm) FROM PAVEMENT EDGE
- 701201-05 LANE CLOSURE, 2L, 2W, DAY ONLY, FOR SPEEDS  $\geq$  45 MPH
- 701301-04 LANE CLOSURE, 2L, 2W, SHORT TERM OPERATIONS
- 701306-04 LANE CLOSURE 2L, 2W SLOW MOVING OPERATIONS DAY ONLY, FOR SPEEDS > 45MPH
- 701311-03 LANE CLOSURE 2L, 2W MOVING OPERATIONS - DAY ONLY
- 701901-08 TRAFFIC CONTROL DEVICES
- 780001-05 TYPICAL PAVEMENT MARKINGS

**GAS & ELECTRIC**  
 AMEREN ILLINOIS  
 200 W. WASHINGTON ST.  
 SPRINGFIELD, IL 62701

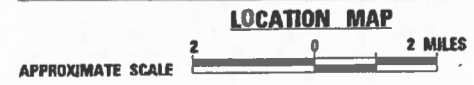
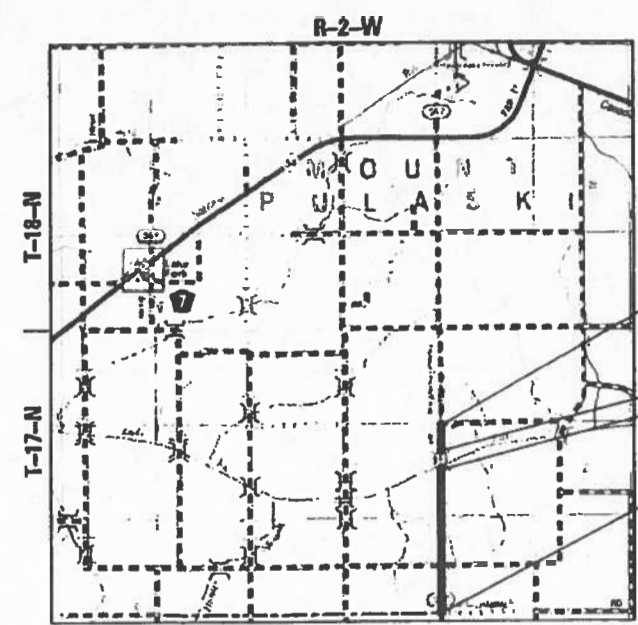
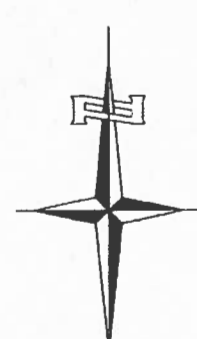
**MENARD ELECTRIC COOP**  
 14300 STATE HIGHWAY 97  
 PETERSBURG, IL 62675

**TELEPHONE**  
 FRONTIER COMMUNICATIONS  
 300 W. BEECHER AVE.  
 JACKSONVILLE, IL 62651



FULL SIZE PLANS HAVE BEEN PREPARED USING STANDARD ENGINEERING SCALES. REDUCED SIZE PLANS WILL NOT CONFORM TO STANDARD SCALES. IN MAKING MEASUREMENTS ON REDUCED PLANS THE ABOVE SCALES MAY BE USED.

**J.U.L.I.E.**  
 JOINT UTILITY LOCATION INFORMATION FOR EXCAVATION  
 1-800-892-0123 OR 811



GROSS LENGTH = 10,480 FT. = 1.985 MILE  
 NET LENGTH = 9,926 FT. = 1.880 MILE

- SEC 18-00108-01-RS  
 CH 1 BEGINS  
 STATION 160+74.00
- BRIDGE OMISSION  
 STATION 180+11.00  
 TO  
 STATION 185+65.00
- SEC 18-00108-01-RS  
 CH 1 ENDS  
 STATION 266+14.00

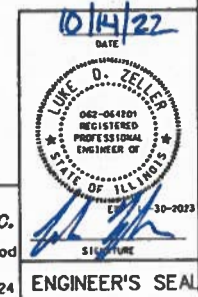
**DESCRIPTION OF WORK**  
 THIS PROJECT CONSISTS OF BITUMINOUS RESURFACING TO IMPROVE COUNTY HIGHWAY 1 INCLUDING PAVEMENT MARKINGS.

APPROVED *Oct. 14* 20 *22*  
 LOGAN COUNTY ENGINEER

PASSED *November 30,* 20 *22*  
 DISTRICT SIX ENGINEER OF LOCAL ROADS & STREETS

Releasing For  
 Bld Based on  
 Limited Review *November 30* 20 *22*  
 DEPUTY DIRECTOR OF HIGHWAYS, REGION FOUR ENGINEER

STATE OF ILLINOIS  
 DEPARTMENT OF TRANSPORTATION



**Hutchinson Engineering, Inc.**  
 Jacksonville - Moline - Peoria - Shorewood  
 Since 1945  
 2022 JOB #4824

PLOT DATE: 10/13/2022  
 USER: jzeller  
 USER NAME: jzeller  
 PLOT SCALE: 1/8" = 1'-0"  
 SHEET: 18-00108-01-RS-103  
 SHEET: 18-00108-01-RS-103

**GENERAL NOTES**

- THE LOCATION OF UNDERGROUND UTILITIES SHOWN ON THE PLANS REPRESENTS THE BEST KNOWLEDGE OF THE COUNTY AND THE INDICATED ADJUSTMENTS OR RECONSTRUCTION ARE CONSIDERED TO BE REASONABLY ACCURATE. IT SHALL BE THE CONTRACTOR'S RESPONSIBILITY TO VERIFY LOCATIONS OF UNDERGROUND INSTALLATIONS BEFORE STARTING CONSTRUCTION OPERATIONS. THE CONTRACTOR SHALL INDEMNIFY THE COUNTY, ITS OFFICERS, AND EMPLOYEES AGAINST ALL CLAIMS DUE TO DAMAGE TO CORPORATE OR PRIVATE PROPERTY RESULTING FROM HIS CONSTRUCTION OPERATIONS AS DESCRIBED IN ARTICLE 107.20 AND 107.26 OF THE STANDARD SPECIFICATIONS FOR ROAD AND BRIDGE CONSTRUCTION.
- THE CONTRACTOR SHALL NOTIFY THE AGENCIES AND UTILITIES AT LEAST 10 (TEN) DAYS PRIOR TO ANY CONSTRUCTION IN THE AREA AND SHALL COMPLY WITH ALL RESTRICTIONS FOR EQUIPMENT MOVEMENTS AND CLEARANCES AS REGARDS TO THEIR FACILITIES.
- BEFORE STARTING ANY EXCAVATION, THE CONTRACTOR MUST CALL J.U.L.I.E. AT 1-800-692-0123 FOR FIELD LOCATIONS OF BURIED ELECTRICAL, TELEPHONE, GAS FACILITIES, AND ALL PUBLIC UTILITIES. A 48 HOUR NOTIFICATION IS REQUIRED.
- WHENEVER IT IS NECESSARY TO REMOVE BITUMINOUS AGGREGATE MIXTURE, OIL AND CHIP SURFACE, EXISTING GRAVEL OR CRUSHED STONE BASE COURSE, IT SHALL BE REMOVED AT THE EXPENSE OF THE CONTRACTOR. NO ADDITIONAL COMPENSATION WILL BE ALLOWED FOR ADDITIONAL LABOR OR EQUIPMENT REQUIRED.
- WHEN DURING CONSTRUCTION OPERATIONS ANY LOOSE MATERIAL IS DEPOSITED IN THE FLOW LINE OF DITCHES, GUTTER OR DRAINAGE STRUCTURES SO THAT THE NATURAL FLOW OF WATER IS OBSTRUCTED, IT SHALL BE REMOVED AT THE CLOSE OF EACH WORKING DAY. AT THE CONCLUSION OF THE CONSTRUCTION OPERATIONS, ALL DRAINAGE STRUCTURES SHALL BE FREE FROM ALL DIRT AND DEBRIS. THIS WORK WILL NOT BE PAID FOR SEPARATELY BUT SHALL BE INCLUDED IN THE COST OF THE HOT-MIX ASPHALT PAVING.
- THE CONTRACTOR SHALL BE REQUIRED TO PROVIDE ACCESS TO ABUTTING PROPERTY AT ALL TIMES DURING THE CONSTRUCTION OF THIS IMPROVEMENT.
- TRAFFIC CONTROL SIGNS REMOVED MUST BE RESET AT THEIR PERMANENT LOCATIONS IN A WORKMANLIKE MANNER AND VISIBLE TO TRAFFIC ON THE ROADWAY. THESE SIGNS SHALL BE INSTALLED IN ACCORDANCE WITH THE 'MANUAL ON UNIFORM TRAFFIC CONTROL DEVICES FOR STREET AND HIGHWAYS', LATEST EDITION.
- THE NOMINAL THICKNESS FOR THE SURFACE COURSE IS SHOWN ON THE SPECIAL DETAIL. THE CONSTRUCTED THICKNESS OF THE ABOVE ITEMS SHALL NOT BE LESS THAN 90 PER CENT OF THE NOMINAL THICKNESS AT ANY LOCATION.
- WHERE SECTION OR SUBSECTION STONES OR MARKERS ARE ENCOUNTERED, THE ENGINEER SHALL BE NOTIFIED BEFORE SUCH STONES ARE REMOVED. THE CONTRACTOR SHALL PROTECT AND CAREFULLY PRESERVE ALL PROPERTY MARKERS UNTIL THE OWNER, AN AUTHORIZED SURVEYOR, OR AGENT HAS WITNESSED OR OTHERWISE REFERENCED THEIR LOCATION.
- ALL PROPOSED PAVEMENT WIDTHS ARE MEASURED EDGE TO EDGE OF PAVEMENT UNLESS OTHERWISE SHOWN ON THE PLANS. INTERSECTION RETURN RADII ARE MEASURED TO THE EDGE OF PAVEMENT.
- KNOWN UTILITIES LOCATED WITHIN THE LIMITS OF THIS IMPROVEMENT ARE:  
AMEREN ILLINOIS  
FRONTIER COMMUNICATIONS  
MENARD ELECTRIC COOP

**HOT-MIX ASPHALT MIXTURE REQUIREMENTS**

	HMA SURFACE	HMA BINDER
PG GRADE:	PG 64-22	PG 64-22
DESIGN AIR VOIDS:	4% @ N50	4% @ N50
MIXTURE COMPOSITION:	IL-9.5	IL-9.5 FG
FRICTION AGGREGATE:	MIXTURE C	N/A
QUALITY MANAGEMENT PROGRAM:	QC/QA	QC/QA

FACTORS FOR ESTIMATING PLAN QUANTITIES ARE AS FOLLOWS AND SHALL NOT BE USED FOR THE BASIS OF FINAL QUANTITIES:

HOT-MIX ASPHALT BINDER COURSE	112 LB/SQ YD/IN
HOT-MIX ASPHALT SURFACE COURSE	112 LB/SQ YD/IN
AGGREGATE (SURFACE, BASE, & BACKFILL)	2.05 TON/CU YD
BITUMINOUS MATERIALS:	
PRIME COAT FOR AGREGATE BASES	0.25 LB/SF
TACK COAT FOR HMA LIFTS	0.025 LB/SF
RIP RAP	1.5 TON/CU YD
TEMPORARY EROSION CONTROL SEEDING	100 LB/ACRE
MULCH	2 TON/ACRE

CODE NO.	ITEM	UNIT	TOTAL QUANTITY	CONSTR. CODE
				ROADWAY
				0005
				RURAL
40200800	AGGREGATE SURFACE COURSE, TYPE B	TON	39	39
40600290	BITUMINOUS MATERIALS (TACK COAT)	POUND	18184	18184
40600370	LONGITUDINAL JOINT SEALANT	FOOT	9986	9986
40600982	HOT-MIX ASPHALT SURFACE REMOVAL - BUTT JOINT	SQ YD	640	640
40602965	HOT-MIX ASPHALT BINDER COURSE, IL-9.5FG, N50	TON	2576	2576
40604050	HOT-MIX ASPHALT SURFACE COURSE, IL-9.5, MIX "C", N50	TON	2277	2277
40800050	INCIDENTAL HOT-MIX ASPHALT SURFACING	TON	15	15
48102100	AGGREGATE WEDGE SHOULDER, TYPE B	TON	456	456
67100100	MOBILIZATION	L SUM	1	1
70300100	SHORT TERM PAVEMENT MARKING	FOOT	5280	5280
70300150	SHORT TERM PAVEMENT MARKING REMOVAL	SQ FT	2640	2640
# 20076600	TRAINEES	Hour	500	
Δ 78001110	PAINT PAVEMENT MARKING - LINE 4"	FOOT	23742	23742
# 20076604	TRAINEES TRAINING PROGRAM GRADUATE	Hour	500	
* X7010216	TRAFFIC CONTROL AND PROTECTION, (SPECIAL)	L SUM	1	1

Δ SPECIALTY ITEMS  
\* SPECIAL PROVISION  
# 0042

**LEGEND**



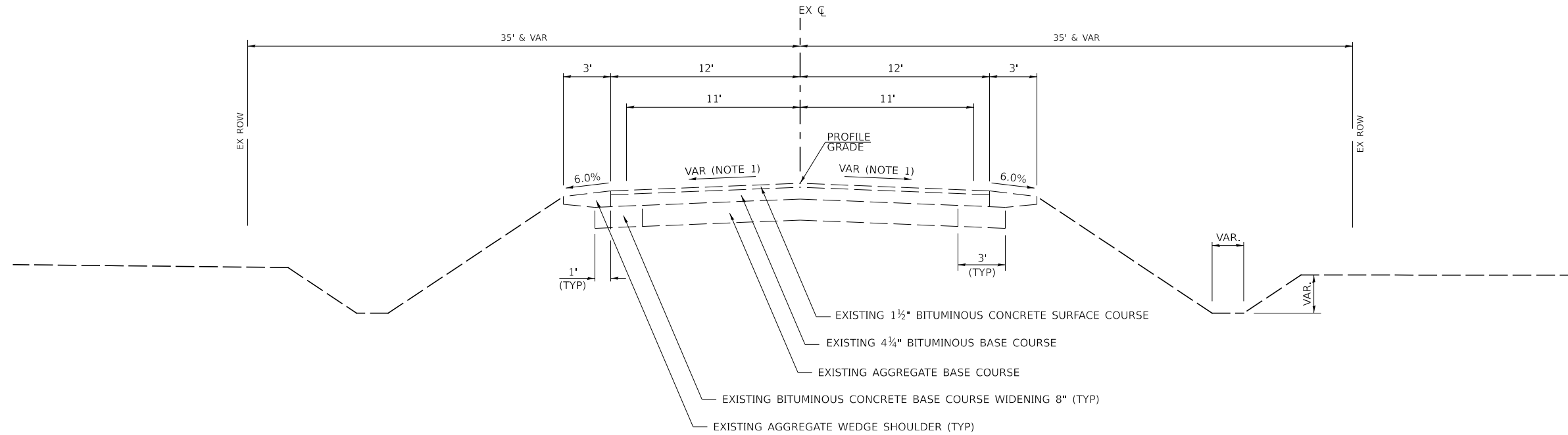
HOT-MIX ASPHALT SURFACE REMOVAL - BUTT JOINT

**LOGAN COUNTY  
HIGHWAY DEPARTMENT**

**GENERAL NOTES, PAVEMENT DESIGN INFORMATION,  
SUMMARY OF QUANTITIES**

SCALE: N/A SHEET 1 OF 1 SHEETS STA. N/A TO STA. N/A

F.A.S. RTE.	SECTION	COUNTY	TOTAL SHEETS	SHEET NO.
562	18-00108-01-R5	LOGAN	9	2
CONTRACT NO. 93797				
ILLINOIS FED. AID PROJECT				

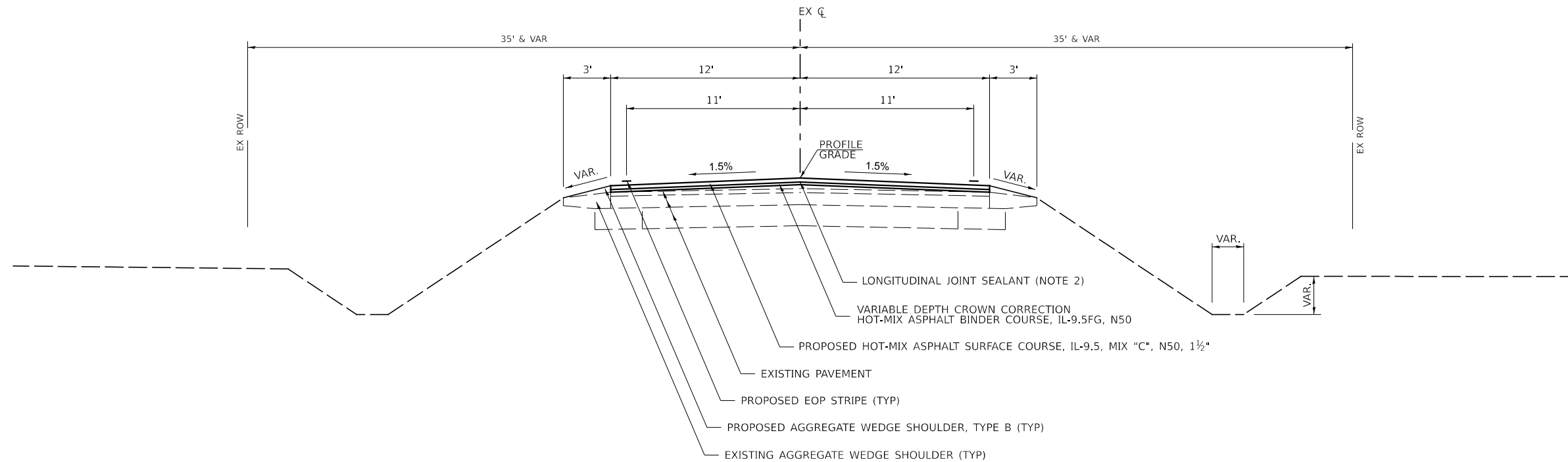


NOTES:

1. EXISTING CROSS SLOPE VARIES ALONG PROJECT LIMITS FROM 0.2% TO 1.9%.
2. LONGITUDINAL JOINT SEALANT TO BE PLACED BETWEEN HOT-MIX ASPHALT SURFACE AND BINDER COURSES.

**EXISTING TYPICAL SECTION  
COUNTY HIGHWAY 1 (1600 AVENUE)**

STA 160+74 TO STA 180+11  
STA 185+65 TO STA 266+14



**PROPOSED TYPICAL SECTION  
COUNTY HIGHWAY 1 (1600 AVENUE)**

STA 160+74 TO STA 180+11  
STA 185+65 TO STA 266+14

MODEL: J:\m\h\c\1\cadd\CADD\_Sheets\18-00108-01-R5\18-00108-01-R5-TYPICAL.dgn  
FILE NAME: 18-00108-01-R5.dgn

USER NAME = BDeCrane	DESIGNED -	REVISED -
	DRAWN -	REVISED -
PLOT SCALE = 0.1667' / in.	CHECKED -	REVISED -
PLOT DATE = 10/13/2022	DATE -	REVISED -

**LOGAN COUNTY  
HIGHWAY DEPARTMENT**

**COUNTY HIGHWAY 1 (1600 AVENUE)  
TYPICAL SECTIONS**

SCALE: N/A SHEET 1 OF 1 SHEETS STA. N/A TO STA. N/A

F.A.S. RTE.	SECTION	COUNTY	TOTAL SHEETS	SHEET NO.
562	18-00108-01-R5	LOGAN	9	3
CONTRACT NO. 93797				
ILLINOIS FED. AID PROJECT				

PAVEMENT							
LOCATION			BITUMINOUS MATERIALS (TACK COAT)	HOT-MIX ASPHALT BINDER COURSE, IL-9.5FG, N50	HOT-MIX ASPHALT SURFACE COURSE, IL-9.5, MIX "C", N50	AGGREGATE WEDGE SHOULDER, TYPE B	LONGITUDINAL JOINT SEALANT
STATION	TO	STATION	POUND	TON	TON	TON	FOOT
COUNTY HIGHWAY 1							
160+74.00	TO	180+11.00	3488	422	434	88	1937
185+65.00	TO	266+14.00	14489	2154	1803	368	8049
TOTAL			17977	2576	2237	456	9986

PAVEMENT MARKING				
STATION TO STATION			PAINT PAVEMENT MARKING	
			4"	4"
			SOLID	SKIP DASH
			WHITE	YELLOW
			EOP	CENTERLINE
			FOOT	
COUNTY HIGHWAY 1				
160+74.00	TO	266+14.00	21102	2640
SUB-TOTAL			21102	2640
USE			23742	

SHORT-TERM PAVEMENT MARKING				
STATION TO STATION				SKIP DASH
				YELLOW
				CENTERLINE
				FOOT
COUNTY HIGHWAY 1				
160+74	TO	266+14	2640	
2 APPLICATIONS			5280	
TOTAL				5280

ENTRANCES							
LOCATION			AGGREGATE SURFACE COURSE, TYPE B	BITUMINOUS MATERIALS (TACK COAT)	HOT-MIX ASPHALT SURFACE COURSE, IL-9.5, MIX "C", N50	INCIDENTAL HOT-MIX ASPHALT SURFACING	
STATION	SIDE	TYPE	TON	POUND	TON	TON	
COUNTY HIGHWAY 1							
161+58	LT	FE	3				
165+77	LT	FE	3				
172+92	LT	FE	3				
173+08	RT	FE	2				
185+84	LT	FE	2				
198+59	RT	FE	2				
200+94	LT	PE		20		5	
202+94	RT	PE		17		5	
212+36	LT	FE	3				
212+36	RT	FE	3				
225+55	RT	FE	3				
225+90	LT	FE	3				
238+84	RT	ROAD		58	15		
238+85	LT	ROAD		37	10		
250+94	RT	PE	3				
251+58	LT	FE	3				
252+15	RT	PE		17		5	
253+80	LT	FE	3				
254+35	RT	FE	3				
265+39	LT	ROAD		58	15		
265+52	RT	FE	3				
TOTAL			39	207	40	15	

HMA SURFACE REMOVAL			
LOCATION			BUTT JOINT
STATION +/-	TO	STATION +/-	SQ YD
COUNTY HIGHWAY 1			
160+74	TO	161+34	160
179+51	TO	180+11	160
185+65	TO	186+25	160
265+54	TO	266+14	160
TOTAL			640

SHORT TERM PAVEMENT MARKING REMOVAL		
		YELLOW
		SQ FT
COUNTY HIGHWAY 1		
160+74	TO	266+14
		2640
TOTAL		2640

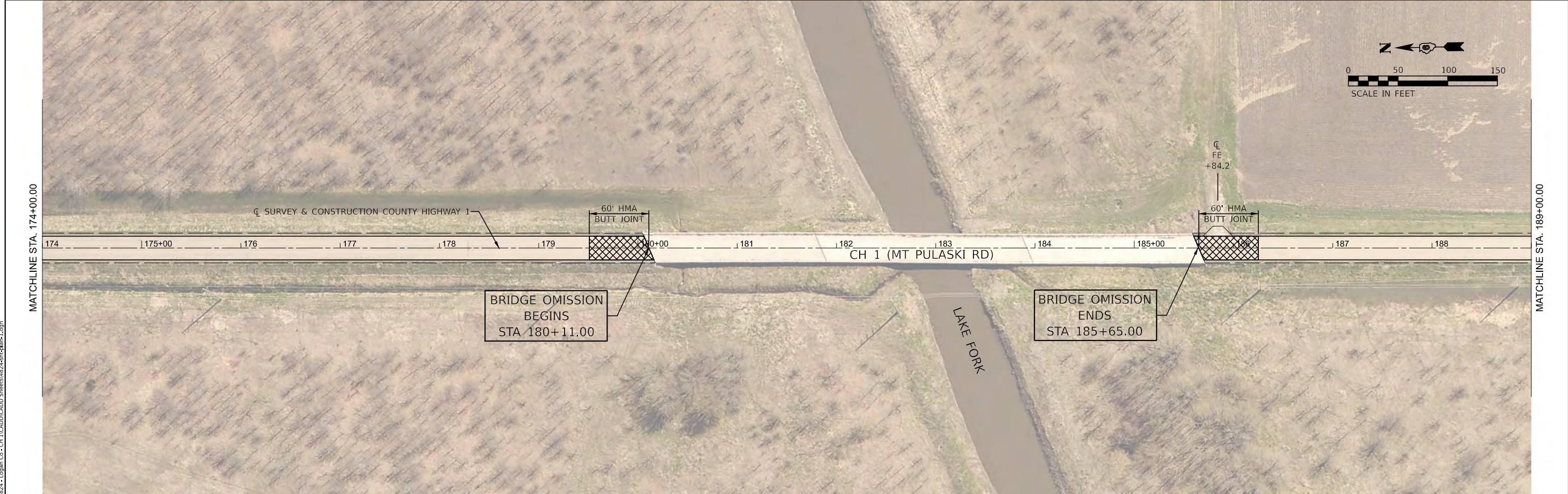
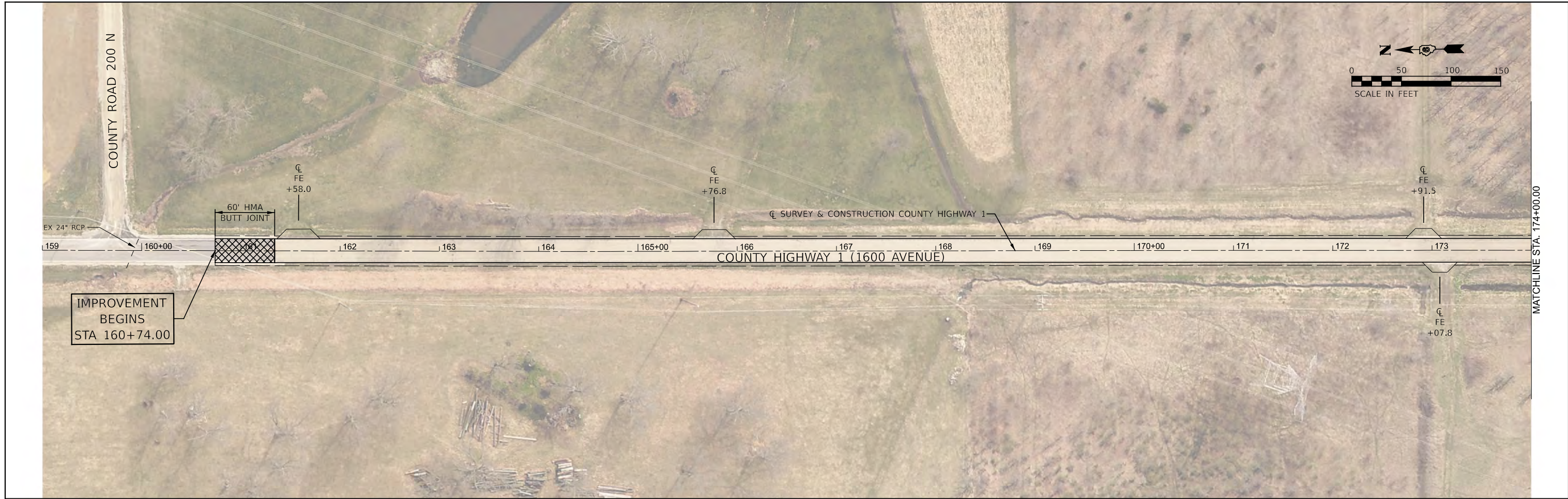
MODEL: \\nas01\project\sheet\sheet  
 FILE NAME: V04824 - Logan Co - CH 1\CADD\CADD Sheets\4824\sheet\sheet.dgn

USER NAME = BDeCrane	DESIGNED -	REVISED -
	DRAWN -	REVISED -
PLOT SCALE = 0.1667' / in.	CHECKED -	REVISED -
PLOT DATE = 10/13/2022	DATE -	REVISED -

**LOGAN COUNTY  
HIGHWAY DEPARTMENT**

<b>COUNTY HIGHWAY 1 (1600 AVENUE) SCHEDULE OF QUANTITIES</b>			
SCALE: N/A	SHEET 1	OF 1 SHEETS	STA. N/A TO STA. N/A

F.A.S. RTE.	SECTION	COUNTY	TOTAL SHEETS	SHEET NO.
562	18-00108-01-R5	LOGAN	9	4
CONTRACT NO. 93797				
ILLINOIS FED. AID PROJECT				



MODEL BY: CH1 - Rtn 1 (Sheet)  
 FILE NAME: \\s44224 - Logon - CH 1\CADD\CADD Sheets\4824\ch1-hp-1.dgn

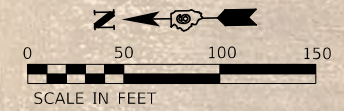
USER NAME =	BDeCrane	DESIGNED -	REVISD -
		DRAWN -	REVISD -
PLOT SCALE =	0.16666633' / in.	CHECKED -	REVISD -
PLOT DATE =	10/13/2022	DATE -	REVISD -

**LOGAN COUNTY  
HIGHWAY DEPARTMENT**

**COUNTY HIGHWAY 1 (1600 AVENUE)  
PLAN**

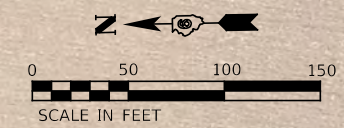
SCALE: 1"=50'      SHEET 1    OF 4    SHEETS    STA. 159+00    TO STA. 189+00

F.A.S. RTE.	SECTION	COUNTY	TOTAL SHEETS	SHEET NO.
562	18-00108-01-R5	LOGAN	9	5
CONTRACT NO. 93797				
ILLINOIS    FED. AID PROJECT				



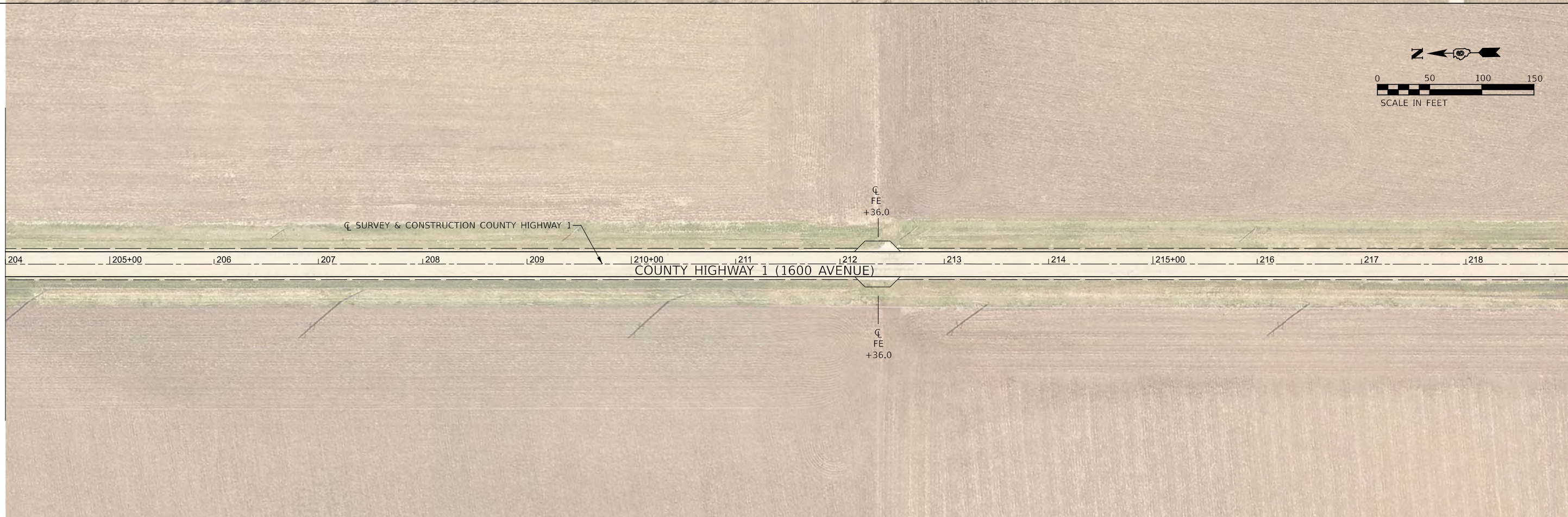
MATCHLINE STA. 189+00.00

MATCHLINE STA. 204+00.00



MATCHLINE STA. 204+00.00

MATCHLINE STA. 219+00.00



MODEL BY: CH1 - Run 3 [Sheet]  
FILE NAME: V04824 - Logans Co - CH 1\CADD\CADD Sheets\4824sheetplan1.dgn

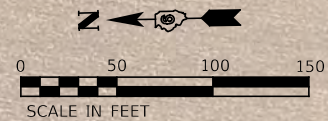
USER NAME = BDeCrane	DESIGNED -	REVISED -
	DRAWN -	REVISED -
PLOT SCALE = 0.16666633' / in.	CHECKED -	REVISED -
PLOT DATE = 10/13/2022	DATE -	REVISED -

**LOGAN COUNTY  
HIGHWAY DEPARTMENT**

**COUNTY HIGHWAY 1 (1600 AVENUE)  
PLAN**

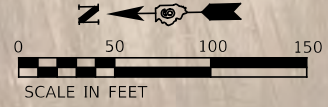
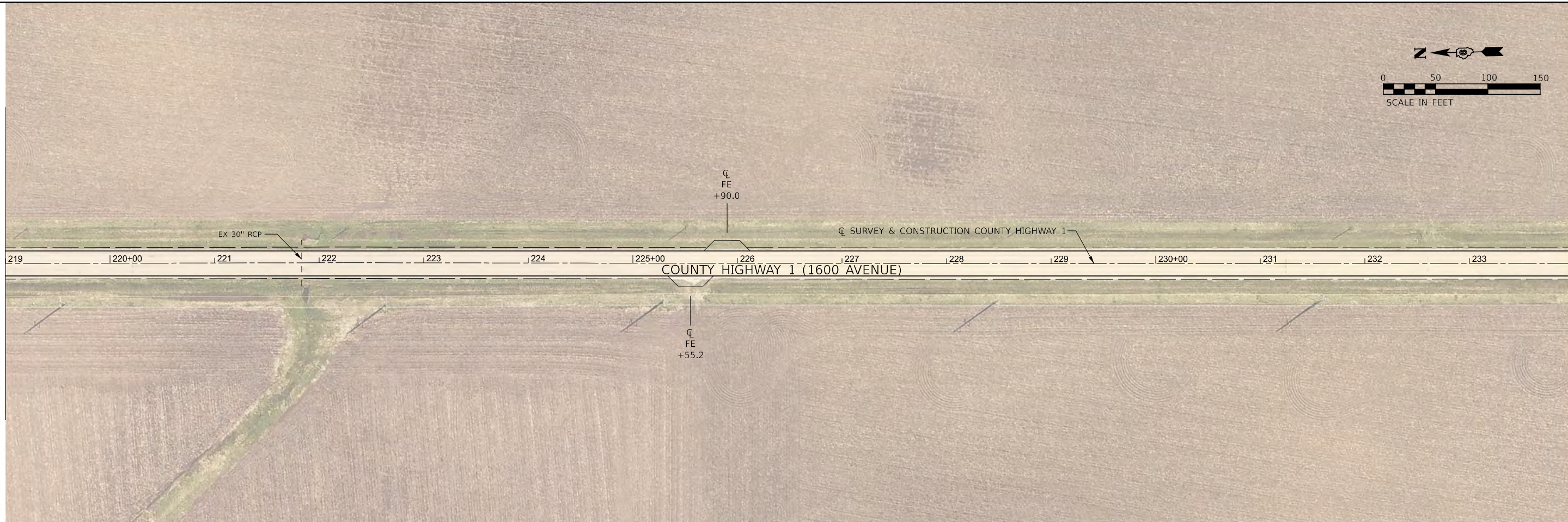
SCALE: 1"=50' SHEET 2 OF 4 SHEETS STA. 189+00 TO STA. 219+00

F.A.S. RTE.	SECTION	COUNTY	TOTAL SHEETS	SHEET NO.
562	18-00108-01-R5	LOGAN	9	6
CONTRACT NO. 93797				
ILLINOIS FED. AID PROJECT				



MATCHLINE STA. 219+00.00

MATCHLINE STA. 234+00.00



MATCHLINE STA. 234+00.00

MATCHLINE STA. 249+00.00



MODEL BY: CH1 - Plan 5 (Sheet)  
FILE NAME: V04824 - Logan Co - CH 1\CADD\CADD\_Sheets\4824sheetplan1.dgn

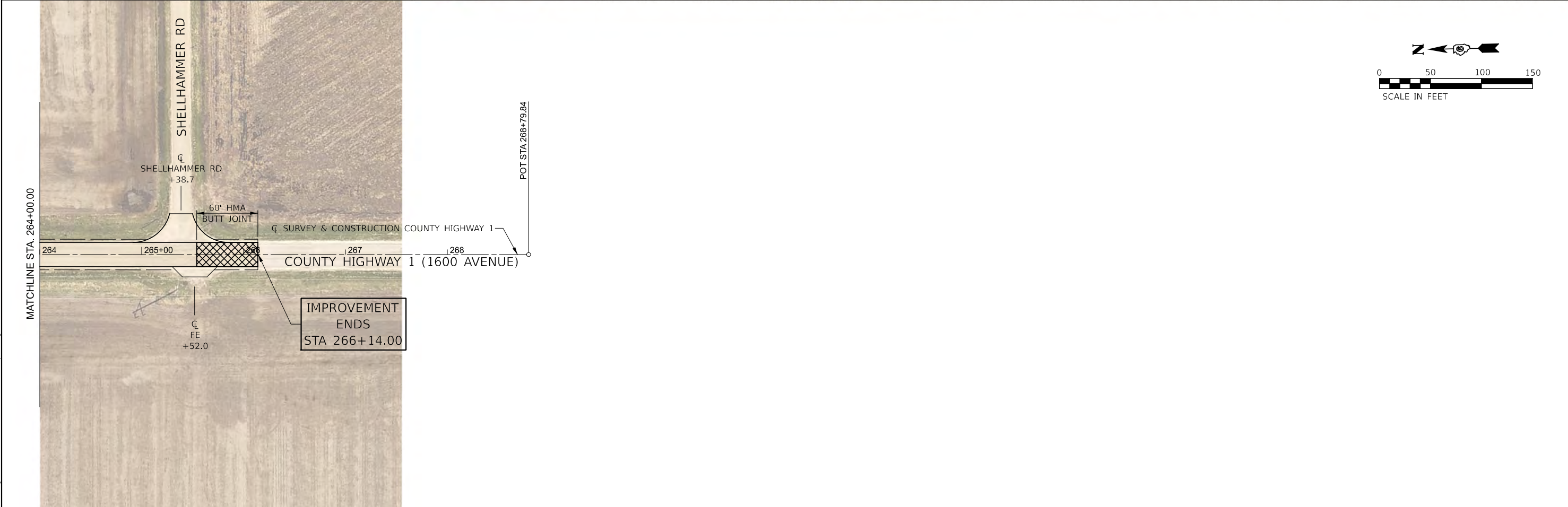
USER NAME = BDeCraene	DESIGNED -	REVISED -
	DRAWN -	REVISED -
PLOT SCALE = 0.16666633' / in.	CHECKED -	REVISED -
PLOT DATE = 10/13/2022	DATE -	REVISED -

**LOGAN COUNTY  
HIGHWAY DEPARTMENT**

**COUNTY HIGHWAY 1 (1600 AVENUE)  
PLAN**

SCALE: 1"=50'    SHEET 3 OF 4 SHEETS    STA. 219+00    TO STA. 249+00

F.A.S. RTE.	SECTION	COUNTY	TOTAL SHEETS	SHEET NO.
562	18-00108-01-R5	LOGAN	9	7
CONTRACT NO. 93797				
ILLINOIS FED. AID PROJECT				



MODEL: E:\CH1 - Rtn 7 (Sheet)  
 FILE NAME: V04824 - Logan Co - CH 1\CADD\CADD Sheets\4824sheet4plan-1.dgn

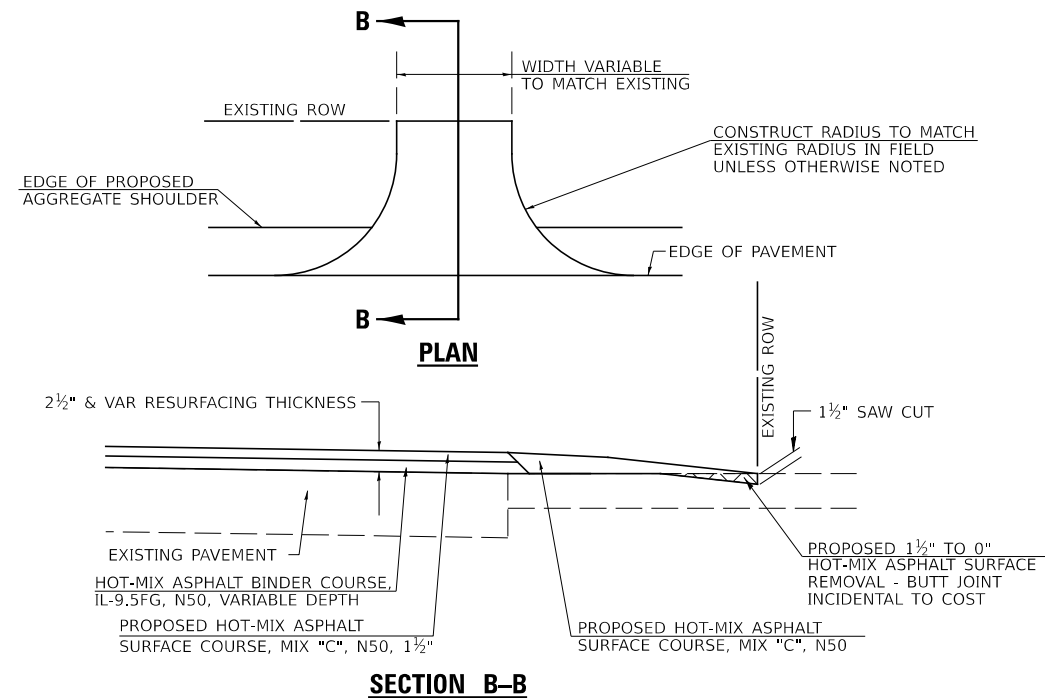
USER NAME = BDeCrane	DESIGNED -	REVISED -
PLOT SCALE = 0.16666633' / in.	DRAWN -	REVISED -
PLOT DATE = 10/13/2022	CHECKED -	REVISED -
	DATE -	REVISED -

**LOGAN COUNTY  
HIGHWAY DEPARTMENT**

<b>COUNTY HIGHWAY 1 (1600 AVENUE) PLAN</b>			
SCALE: 1"=50'	SHEET 4	OF 4 SHEETS	TO STA. 268+79.84

F.A.S. RTE.	SECTION	COUNTY	TOTAL SHEETS	SHEET NO.
562	18-00108-01-R5	LOGAN	9	8
CONTRACT NO. 93797				
ILLINOIS FED. AID PROJECT				

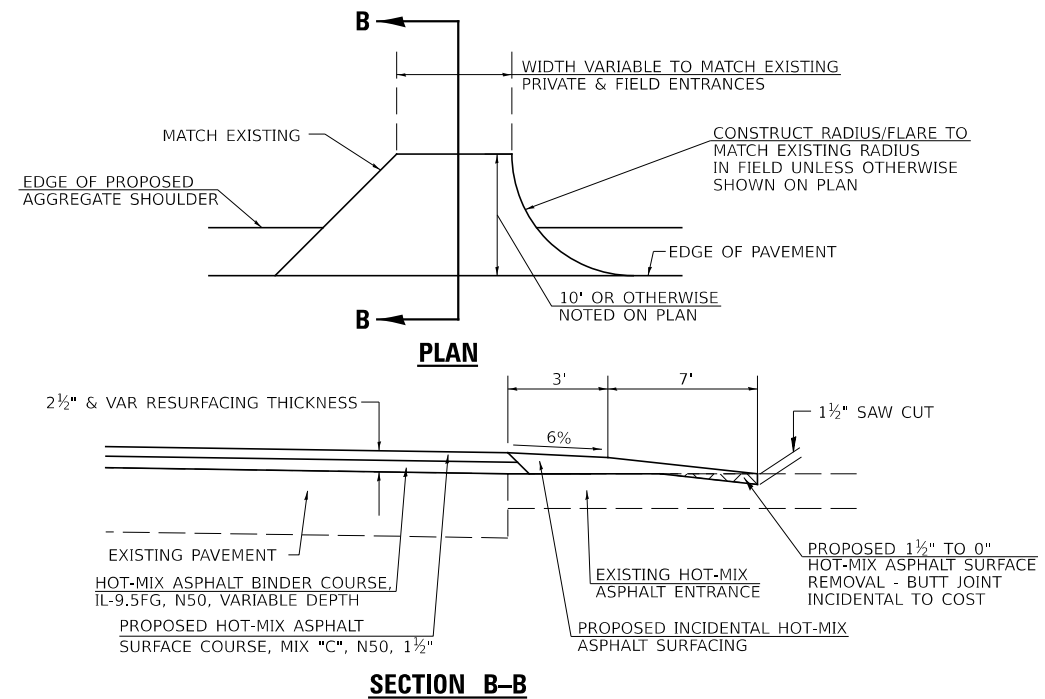




**SECTION B-B**

**HOT MIX-ASPHALT SIDE ROAD TAPERS**

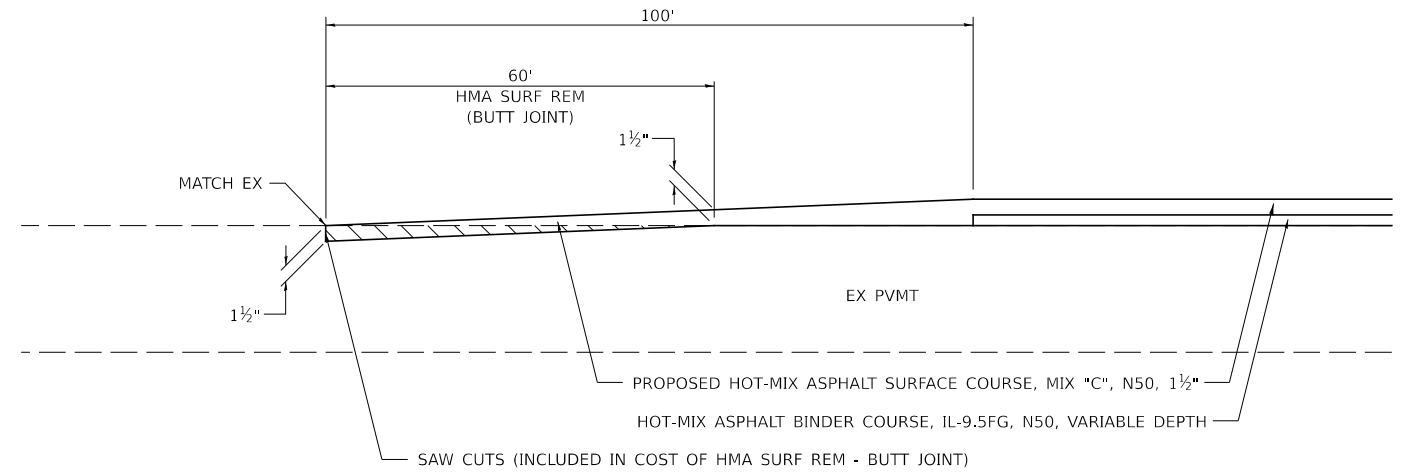
STATION	SIDE	ROAD
CH 1		
238+84	RT	050 ST
238+85	LT	050 ST
265+39	LT	SHELLHAMMER RD



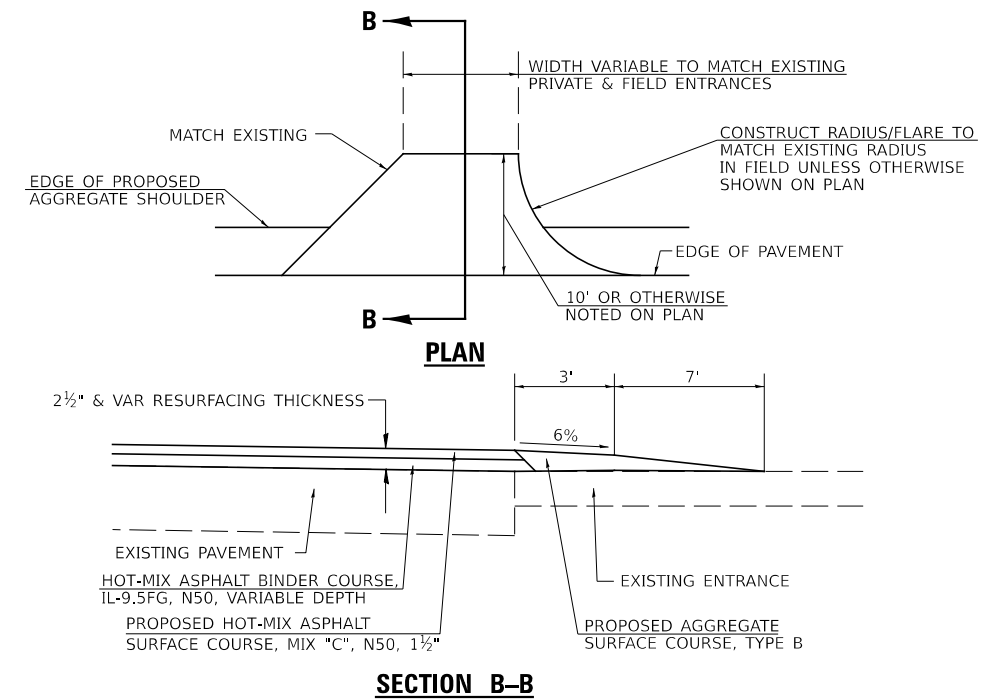
**SECTION B-B**

**HOT MIX-ASPHALT ENTRANCE TAPERS**

STATION	SIDE	TYPE
CH 1		
200+94	LT	PE
202+94	RT	PE
252+15	RT	PE



**BEGINNING /ENDING TRANSITION DETAIL**



**SECTION B-B**

**AGGREGATE ENTRANCE TAPERS**

STATION	SIDE	TYPE
CH 1		
161+58	LT	FE
165+77	LT	FE
172+92	LT	FE
173+08	RT	FE
185+84	LT	FE
198+59	RT	FE
212+36	LT	FE
212+36	RT	FE
225+55	RT	FE
225+90	LT	FE
250+94	RT	PE
251+58	LT	FE
253+80	LT	FE
254+35	RT	FE
265+52	RT	FE

MODEL: D:\mhl\sheet  
 FILE NAME: V:\4324 - Logan Co - CH 1\CADD\CADD Sheets\4324\entrance.tbl.dgn

USER NAME = BDeCrane	DESIGNED -	REVISED -
PLOT SCALE = 0.1667' / in.	DRAWN -	REVISED -
PLOT DATE = 10/13/2022	CHECKED -	REVISED -
	DATE -	REVISED -

**LOGAN COUNTY  
HIGHWAY DEPARTMENT**

**COUNTY HIGHWAY 1 (1600 AVENUE)  
ENTRANCE AND SIDE ROAD DETAILS**

SCALE: N/A SHEET 1 OF 1 SHEETS STA. N/A TO STA. N/A

F.A.S. RTE.	SECTION	COUNTY	TOTAL SHEETS	SHEET NO.
562	18-00108-01-R5	LOGAN	9	9
CONTRACT NO. 93797				
ILLINOIS		FED. AID PROJECT		