

PLAN	SURVEYED	BY	DATE
	PLOTTED		
NOTE BOOK NO.	ALIGNMENT CHECKED		
	AS-BUILT CHECKED		
	CADD FILE NAME		

PROFILE	SURVEYED	BY	DATE
	PLOTTED		
NOTE BOOK NO.	GRADES CHECKED		
	STRUCTURE NOTATIONS CHECKED		

SPECIALTY ITEM	SPECIAL PROVISION	CODE NO.	ITEM	UNIT	TOTAL QUANTITY	CONSTRUCTION CODE				
						STU FUNDS				100% VILLAGE
						80% FED				
						20% VILLAGE				
						0005	0021 Safety	0042		
						Resurfacing Roadway	Signals	Lighting	Trainees	Non-Participating
X		60500060	REMOVING INLETS	EACH	15	15				
X		60603900	COMBINATION CONCRETE CURB AND GUTTER, TYPE B-6.12 (ABUTTING EXISTING PAVEMENT)	FOOT	1352	1352				
X		60604100	COMBINATION CONCRETE CURB AND GUTTER, TYPE B-6.12 (MODIFIED)	FOOT	2840	2840				
		60605000	COMBINATION CONCRETE CURB AND GUTTER, TYPE B-6.24	FOOT	3561	3561				
		60605900	COMBINATION CONCRETE CURB AND GUTTER, TYPE B-9.12	FOOT	306	306				
		60608600	COMBINATION CONCRETE CURB AND GUTTER, TYPE M-6.06	FOOT	31	31				
		60610400	COMBINATION CONCRETE CURB AND GUTTER, TYPE M-6.24	FOOT	12	12				
X		60610900	COMBINATION CONCRETE CURB AND GUTTER, TYPE M-6.24 (VARIABLE WIDTH GUTTER FLAG)	FOOT	24	24				
		60618300	CONCRETE MEDIAN SURFACE, 4 INCH	SQ FT	246	246				
		60619600	CONCRETE MEDIAN, TYPE SB-6.12	SQ FT	2700	2700				
		60620800	CONCRETE MEDIAN, TYPE SB-9.12	SQ FT	57	57				
		60623200	CONCRETE MEDIAN, TYPE SM-6.24	SQ FT	173	173				
X		66900200	NON-SPECIAL WASTE DISPOSAL	CU YD	500	500				
X		66900530	SOIL DISPOSAL ANALYSIS	EACH	5	5				
X		66901001	REGULATED SUBSTANCES PRE-CONSTRUCTION PLAN	L SUM	1	1				
X		66901003	REGULATED SUBSTANCES FINAL CONSTRUCTION REPORT	L SUM	1	1				
X		66901006	REGULATED SUBSTANCES MONITORING	DAYS		-50 75				

MODEL: SMODELNAME5
FILE NAME: ...3447_SUM



Two Pierce Place, Suite 1400
Itasca, Illinois 60143
Tel: 630.773.3900 Fax: 630.773.3975
www.civiltechinc.com

DESIGNED -	JRR	REVISED -	12/23/2022
DRAWN -	JRR	REVISED -	2/22/2023
CHECKED -	KRK	REVISED -	
DATE -	11/02/2022	REVISED -	

STATE OF ILLINOIS
DEPARTMENT OF TRANSPORTATION

LAKEVIEW PARKWAY IMPROVEMENT
SUMMARY OF QUANTITIES

SHEET 6 OF 17 SHEETS

FAU RTE	SECTION	COUNTY	TOTAL SHEETS	SHEET NO
2419	98-00026-02-WR	LAKE	210	9
CONTRACT NO 61115				
ILLINOIS FED AID PROJECT				

PLAN	SURVEYED	BY	DATE
	PLOTTED		
NOTE BOOK NO.	ALIGNMENT CHECKED		
	CADD FILE NAME		

PROFILE	SURVEYED	BY	DATE
	PLOTTED		
NOTE BOOK NO.	GRADES CHECKED		
	STRUCTURE NOTATIONS CHECKED		

SPECIALTY ITEM	SPECIAL PROVISION	CODE NO.	ITEM	UNIT	TOTAL QUANTITY	CONSTRUCTION CODE				
						STU FUNDS				100% VILLAGE
						80% FED				
						20% VILLAGE				
						0005	0021 Safety	0042		
						Resurfacing Roadway	Signals	Lighting	Trainees	Non-Participating
		67100100	MOBILIZATION	L SUM	1	1				
X		70107025	CHANGEABLE MESSAGE SIGN	CAL DA	140 500	140 500				
		70300100	SHORT TERM PAVEMENT MARKING	FOOT	4411	4411				
		70300150	SHORT TERM PAVEMENT MARKING REMOVAL	SQ FT	1456	1456				
X		70300211	TEMPORARY PAVEMENT MARKING LETTERS AND SYMBOLS - PAINT	SQ FT	1617	1617				
X		70300221	TEMPORARY PAVEMENT MARKING - LINE 4" - PAINT	FOOT	13243	13243				
X		70300241	TEMPORARY PAVEMENT MARKING - LINE 6" - PAINT	FOOT	6624	6624				
X		70300261	TEMPORARY PAVEMENT MARKING - LINE 12" - PAINT	FOOT	174	174				
X		70300281	TEMPORARY PAVEMENT MARKING - LINE 24" - PAINT	FOOT	320	320				
X		70307100	TEMPORARY PAVEMENT MARKING LETTERS AND SYMBOLS - TYPE IV TAPE	SQ FT	37	37				
X		70307120	TEMPORARY PAVEMENT MARKING - LINE 4" - TYPE IV TAPE	FOOT	3257	3257				
		70307130	TEMPORARY PAVEMENT MARKING - LINE 6" - TYPE IV TAPE	FOOT	227	227				
		70307160	TEMPORARY PAVEMENT MARKING - LINE 12" - TYPE IV TAPE	FOOT	61	61				
X		72000100	SIGN PANEL - TYPE 1	SQ FT	172	82	90			
X		72000200	SIGN PANEL - TYPE 2	SQ FT	91		91			
X		72400310	REMOVE SIGN PANEL - TYPE 1	SQ FT	60	60				
X		72400500	RELOCATE SIGN PANEL ASSEMBLY - TYPE A	EACH	4	4				

MODEL: SMODELNAME
FILE NAME: ...3447_SUM



Two Pierce Place, Suite 1400
Itasca, Illinois 60143
Tel: 630.773.3900 Fax: 630.773.3975
www.civiltechinc.com

DESIGNED - JRR	REVISED - 12/23/2022
DRAWN - JRR	REVISED - 01/27/2023
CHECKED - KRK	REVISED - 2/22/2023
DATE - 11/02/2022	REVISED -

STATE OF ILLINOIS
DEPARTMENT OF TRANSPORTATION

LAKEVIEW PARKWAY IMPROVEMENT
SUMMARY OF QUANTITIES

FAU RTE	SECTION	COUNTY	TOTAL SHEETS	SHEET NO
2419	98-00026-02-WR	LAKE	210	10
CONTRACT NO 61115				
ILLINOIS FED AID PROJECT				

SHEET 7 OF 17 SHEETS

PLAN	SURVEYED	BY	DATE
	PLOTTED		
NOTE BOOK NO.	ALIGNMENT CHECKED		
	FIELD FILE NAME		

PROFILE	SURVEYED	BY	DATE
	PLOTTED		
NOTE BOOK NO.	GRADES CHECKED		
	STRUCTURE NOTATIONS CHECKED		

SPECIALTY ITEM	SPECIAL PROVISION	CODE NO.	ITEM	UNIT	TOTAL QUANTITY	CONSTRUCTION CODE				
						STU FUNDS				100% VILLAGE
						80% FED				
						20% VILLAGE				
						0005	0021 Safety	0042		
						Resurfacing Roadway	Signals	Lighting	Trainees	Non-Participating
X		X4420900	LONGITUDINAL PARTIAL DEPTH PATCHING	TON	28		28			
X		X6023200	INLETS, TYPE A, SPECIAL	EACH	1		1			
X		X6026050	SANITARY MANHOLES TO BE ADJUSTED	EACH	2		2			
X		X6026051	SANITARY MANHOLES TO BE RECONSTRUCTED	EACH	4		4			
X		X6030310	FRAMES AND LIDS TO BE ADJUSTED (SPECIAL)	EACH	2		2			
X		X6061900	CONCRETE MEDIAN, TYPE SB-6.12 (SPECIAL)	SQ FT	5580		5580			
X		X6064200	COMBINATION CONCRETE CURB AND GUTTER, TYPE B-6.12 (SPECIAL)	FOOT	401		401			
X		X6700405	ENGINEER'S FIELD OFFICE, TYPE A (MODIFIED)	CAL MO	6-12		6-12			
X	X	X7010216	TRAFFIC CONTROL AND PROTECTION, (SPECIAL)	L SUM	1		1			
X	X	X7240207	REMOVE EXISTING SIGN COMPLETE	EACH	1		1			
X	X	X8250060	TEMPORARY LIGHTING CONTROLLER	EACH	1			1		
X	X	X8360215	LIGHT POLE FOUNDATION, 24" DIAMETER, OFFSET	FOOT	48			48		
X	X	X8620200	UNINTERRUPTABLE POWER SUPPLY, SPECIAL	EACH	2			2		
X	X	X8710024	FIBER OPTIC CABLE IN CONDUIT, NO. 62.5/125, MM12F SM24F	FOOT	4113			4113		
X	X	X8760200	ACCESSIBLE PEDESTRIAN SIGNALS	EACH	20			20		
X	X	X8780012	CONCRETE FOUNDATION, TYPE A 12-INCH DIAMETER	FOOT	12			12		
X		XX003668	PRECONSTRUCTION VIDEO TAPING	L SUM	1					1

MODEL: SMODELNAME
FILE NAME: ...3447_SUM



Two Pierce Place, Suite 1400
Itasca, Illinois 60143
Tel: 630.773.3900 Fax: 630.773.3975
www.civiltechinc.com

DESIGNED - JRR	REVISED - 12/23/2022
DRAWN - JRR	REVISED - 01/27/2023
CHECKED - KRK	REVISED - 2/22/2023
DATE - 11/02/2022	REVISED -

STATE OF ILLINOIS
DEPARTMENT OF TRANSPORTATION

LAKEVIEW PARKWAY IMPROVEMENT
SUMMARY OF QUANTITIES

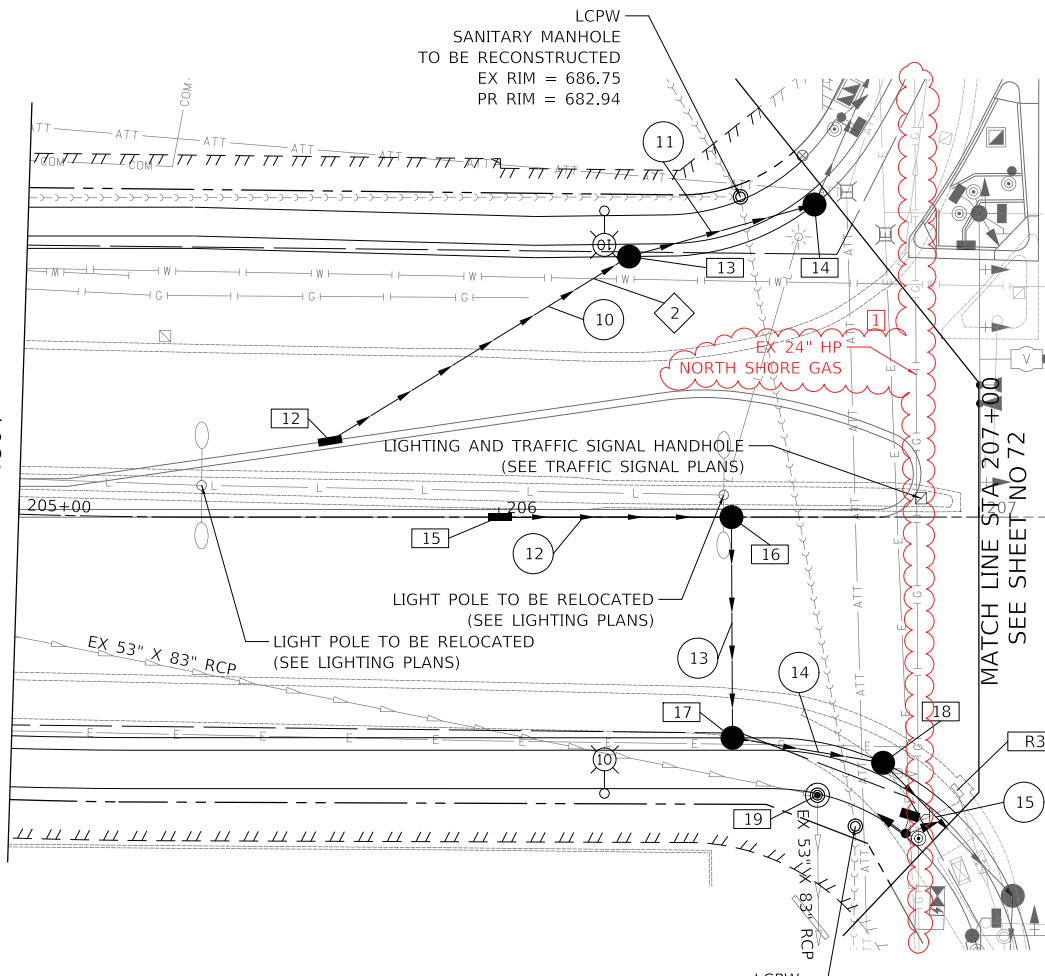
FAU RTE	SECTION	COUNTY	TOTAL SHEETS	SHEET NO
2419	98-00026-02-WR	LAKE	210	19
CONTRACT NO 6115				
ILLINOIS FED AID PROJECT				

SHEET 16 OF 17 SHEETS

PLAN	SURVEYED	DATE
	PLOTTED	BY
	ALIGNED	
	CHECKED	
	FILED	
	NO.	

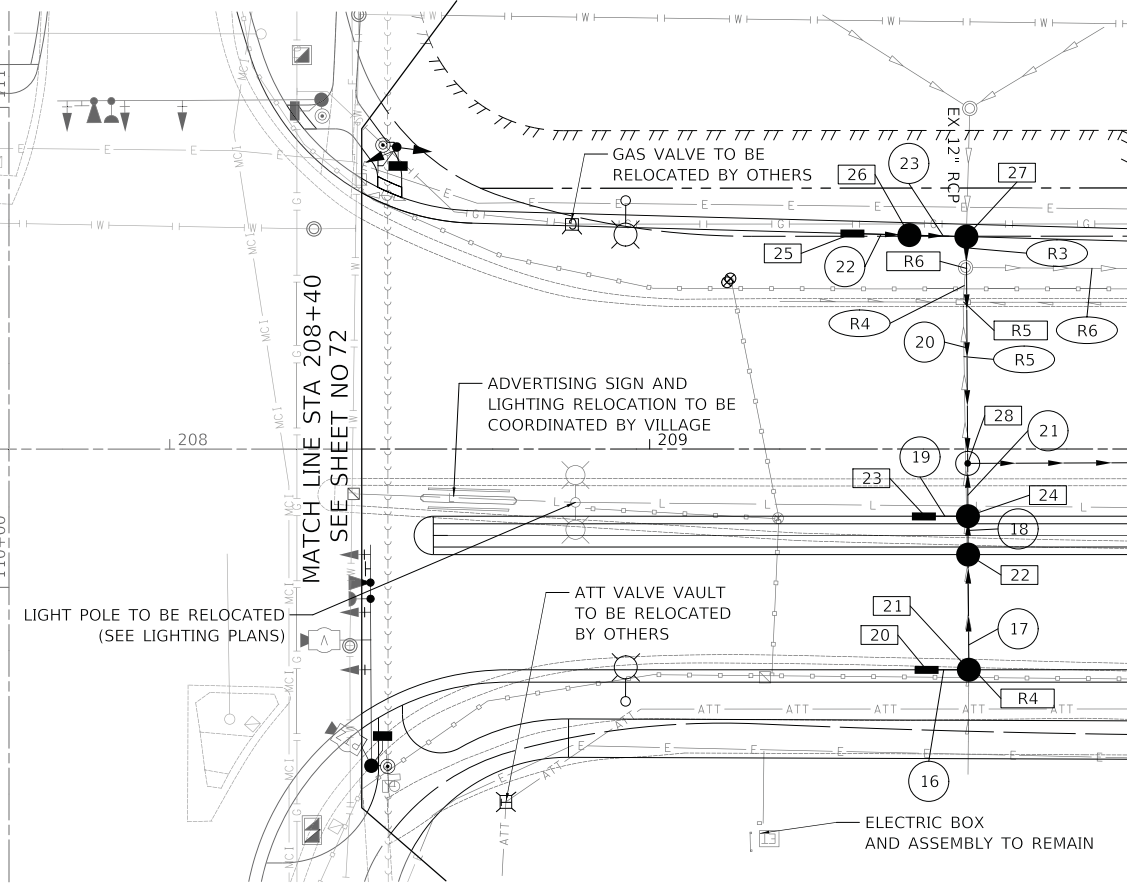
PROFILE	SURVEYED	DATE
	PLOTTED	BY
	GRADES	
	CHECKED	
	STRUCTURE	
	NOTATIONS	
	NO.	

MATCH LINE STA 205+00
SEE SHEET NO 64



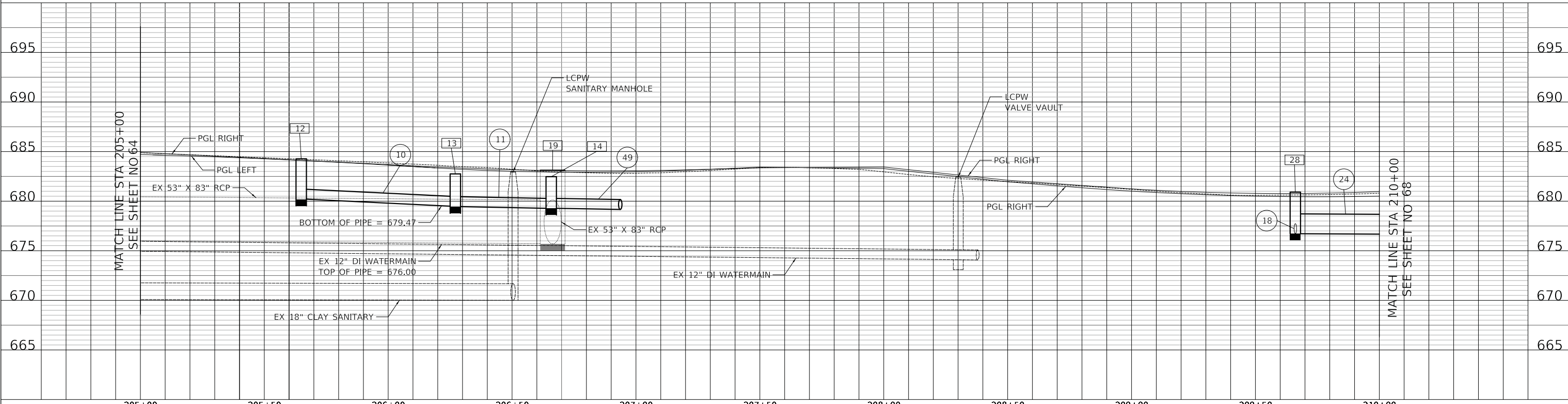
ROUTE 60 (TOWNLINE ROAD)

MATCH LINE STA 207+00
SEE SHEET NO 72



MATCH LINE STA 210+00
SEE SHEET NO 68

LAKEVIEW PARKWAY



MATCH LINE STA 205+00
SEE SHEET NO 64

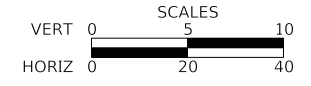
MATCH LINE STA 210+00
SEE SHEET NO 68

MODEL: SMODELNAME
FILE NAME: ...3147 D101.dgn

CIVILTECH
Two Pierce Place, Suite 1400
Itasca, Illinois 60143
Tel: 630.773.3900 Fax: 630.773.3975
www.civiltechinc.com

DESIGNED	-	JRR	REVISED	-	01/27/2023
DRAWN	-	JRR	REVISED	-	2/22/2023
CHECKED	-	KRK	REVISED	-	
DATE	-	11/02/2022	REVISED	-	

STATE OF ILLINOIS
DEPARTMENT OF TRANSPORTATION



LAKEVIEW PARKWAY IMPROVEMENT
DRAINAGE AND UTILITIES

SHEET 3 OF 10 SHEETS STA 205+00 TO STA 210+00

FAU RTE	SECTION	COUNTY	TOTAL SHEETS	SHEET NO
2419	98-00026-02-WR	LAKE	210	66
CONTRACT NO 61115				
ILLINOIS FED AID PROJECT				

- 29 STA. 211+50.3, 46.0' RT
INLETS TA T24 F&G
RIM = 681.80
INV = 677.30 (12" E)
- 30 NUMBER NOT USED
- 31 STA. 211+50.1, 9.8' RT
CB TA 4 DIA T11 F&G
RIM = 682.15
INV = 676.82 (12" W)
INV = 676.76 (12" E)
- 32 STA. 211+50.1, 2.3' RT
MAN TA 6 DIA T1F CL
RIM = 682.43
INV = 676.70 (12" W)
INV = 676.49 (30" EQRS N)
INV = 676.49 (30" SE)
- 33 STA. 211+92.4, 38.1' LT
MAN TA 5 DIA T24 F&G
RIM = 682.11
INV = 676.42 (30" NW)
INV = 676.41 (30" S)
- 34 STA. 212+78.3, 42.2' LT
MAN TA 5 DIA T1F CL
RIM = 683.73
INV = 676.32 (30" N)
INV = 676.31 (EX 30" SE)
- 35 STA. 213+86.8, 46.0' RT
INLETS TA T11 F&G
RIM = 682.11
INV = 679.00 (EX 12" SW)

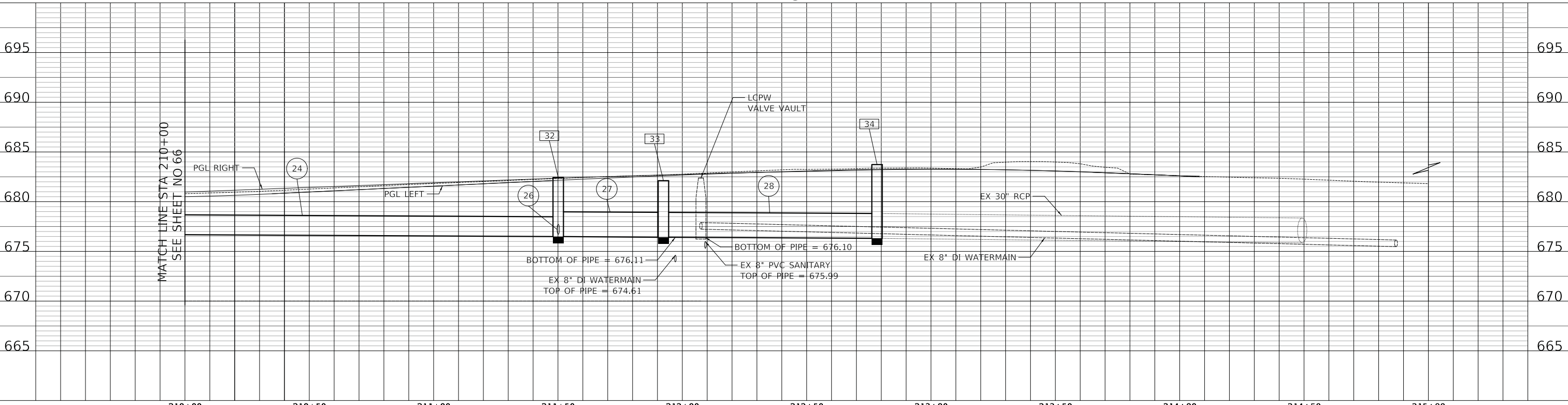
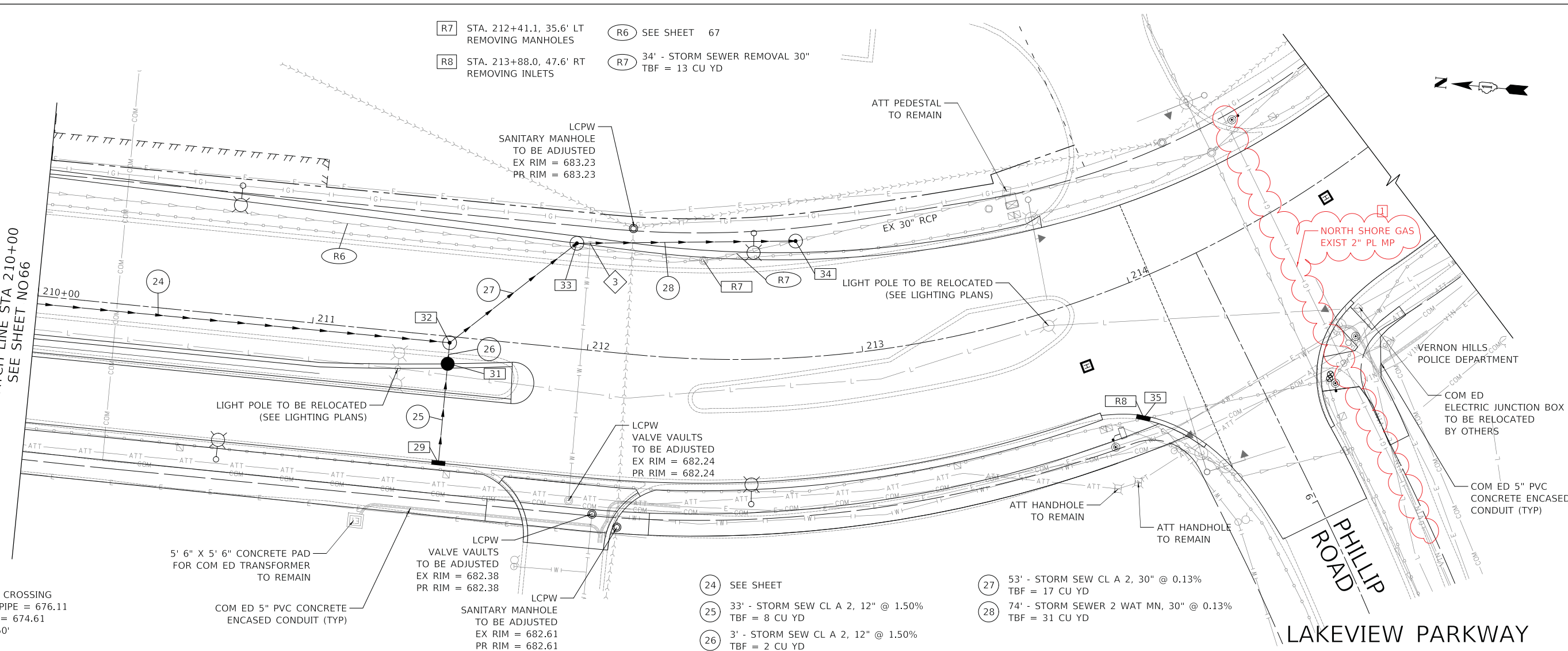
- R7 STA. 212+41.1, 35.6' LT
REMOVING MANHOLES
- R8 STA. 213+88.0, 47.6' RT
REMOVING INLETS
- R6 SEE SHEET 67
- R7 34" - STORM SEWER REMOVAL 30"
TBF = 13 CU YD

3 STORM SEWER WATER MAIN CROSSING
STORM SEWER BOTTOM OF PIPE = 676.11
ADJUSTED WM TOP OF PIPE = 674.61
VERTICAL SEPARATION = 1.50'

- 24 SEE SHEET
- 25 33" - STORM SEW CL A 2, 12" @ 1.50%
TBF = 8 CU YD
- 26 3' - STORM SEW CL A 2, 12" @ 1.50%
TBF = 2 CU YD
- 27 53' - STORM SEW CL A 2, 30" @ 0.13%
TBF = 17 CU YD
- 28 74' - STORM SEWER 2 WAT MN, 30" @ 0.13%
TBF = 31 CU YD

PLAN	DATE	BY
SURVEYED		
PLOTTED		
ALIGNED		
CHECKED		
NO. _____		

PROFILE	DATE	BY
SURVEYED		
PLOTTED		
GRADES CHECKED		
STRUCTURE NOTATIONS CHECKED		
NO. _____		



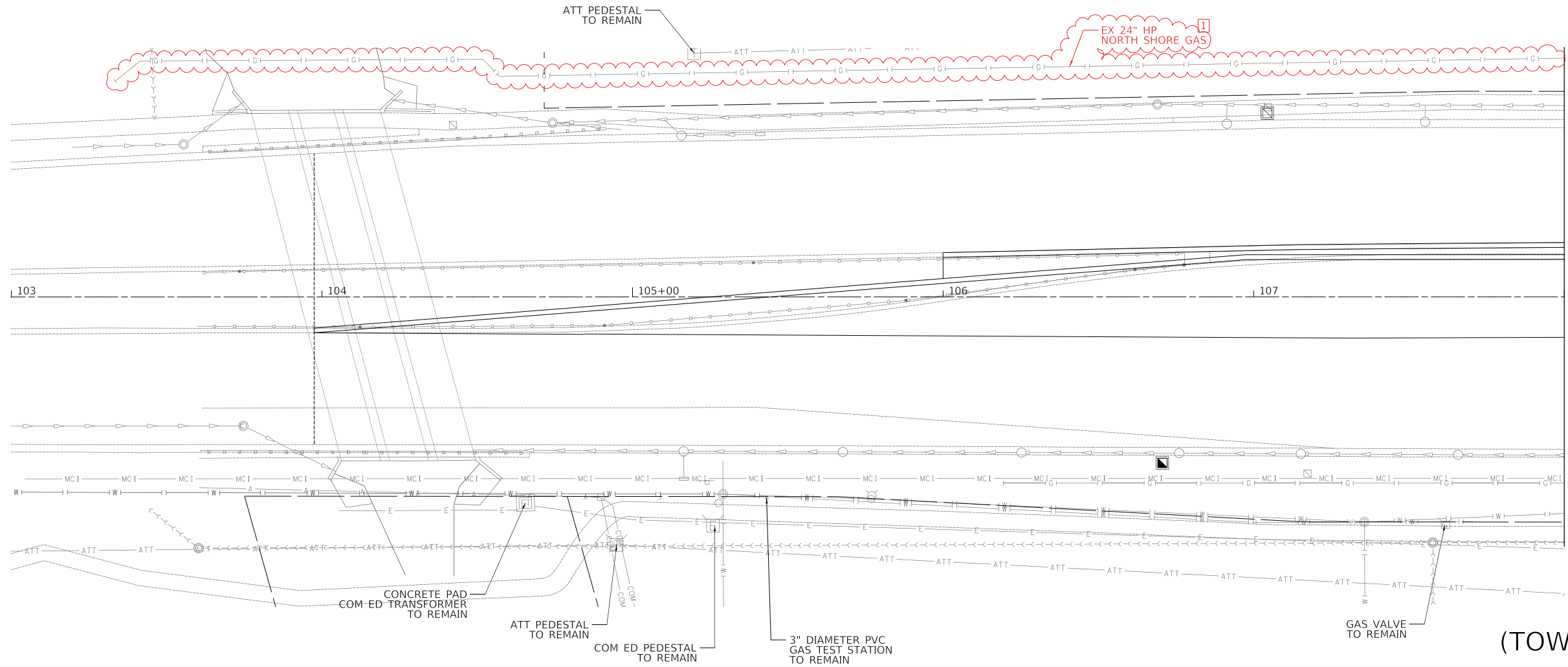
DESIGNED - JRR	REVISED - (2/22/2023)	STATE OF ILLINOIS DEPARTMENT OF TRANSPORTATION	VERT 0 5 10 HORIZ 0 20 40	LAKEVIEW PARKWAY IMPROVEMENT DRAINAGE AND UTILITIES			FAU RTE	SECTION	COUNTY	TOTAL SHEETS	SHEET NO.
DRAWN - JRR	REVISED -			2419	98-00026-02-WR	LAKE	210	68			
CHECKED - KRK	REVISED -			CONTRACT NO 61115							
DATE - 11/02/2022	REVISED -			ILLINOIS FED AID PROJECT							

CIVILTECH
Two Pierce Place, Suite 1400
Itasca, Illinois 60143
Tel: 630.773.3900 Fax: 630.773.3975
www.civiltechinc.com

SHEET 5 OF 10 SHEETS
STA 210+00 TO STA 215+00

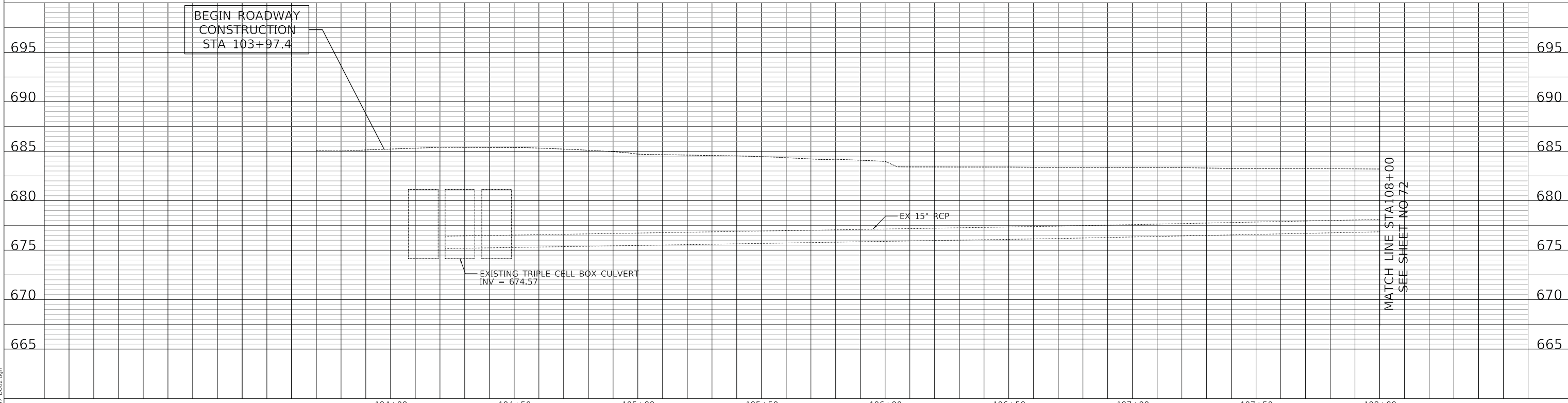
PLAN	SURVEYED	DATE
	PLOTTED	BY
	ALIGNMENT CHECKED	
	NOTE BOOK NO.	
	CADD FILE NAME	

PROFILE	SURVEYED	DATE
	PLOTTED	BY
	GRADES CHECKED	
	NOTE BOOK NO.	
	STRUCTURE NOTATIONS CHECKED	



MATCH LINE STA 108+00
SEE SHEET NO 72

**ROUTE 60
(TOWNLINE ROAD)**



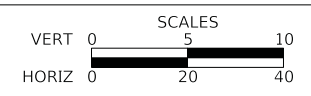
MATCH LINE STA 108+00
SEE SHEET NO 72

MODEL: SH06LNAME5
FILE NAME: ...3447.DWG.dgn

CIVILTECH
Two Pierce Place, Suite 1400
Itasca, Illinois 60143
Tel: 630.773.3900 Fax: 630.773.3975
www.civiltechinc.com

DESIGNED -	JRR	REVISED -	2/22/2023
DRAWN -	JRR	REVISED -	
CHECKED -	KRK	REVISED -	
DATE -	11/02/2022	REVISED -	

**STATE OF ILLINOIS
DEPARTMENT OF TRANSPORTATION**

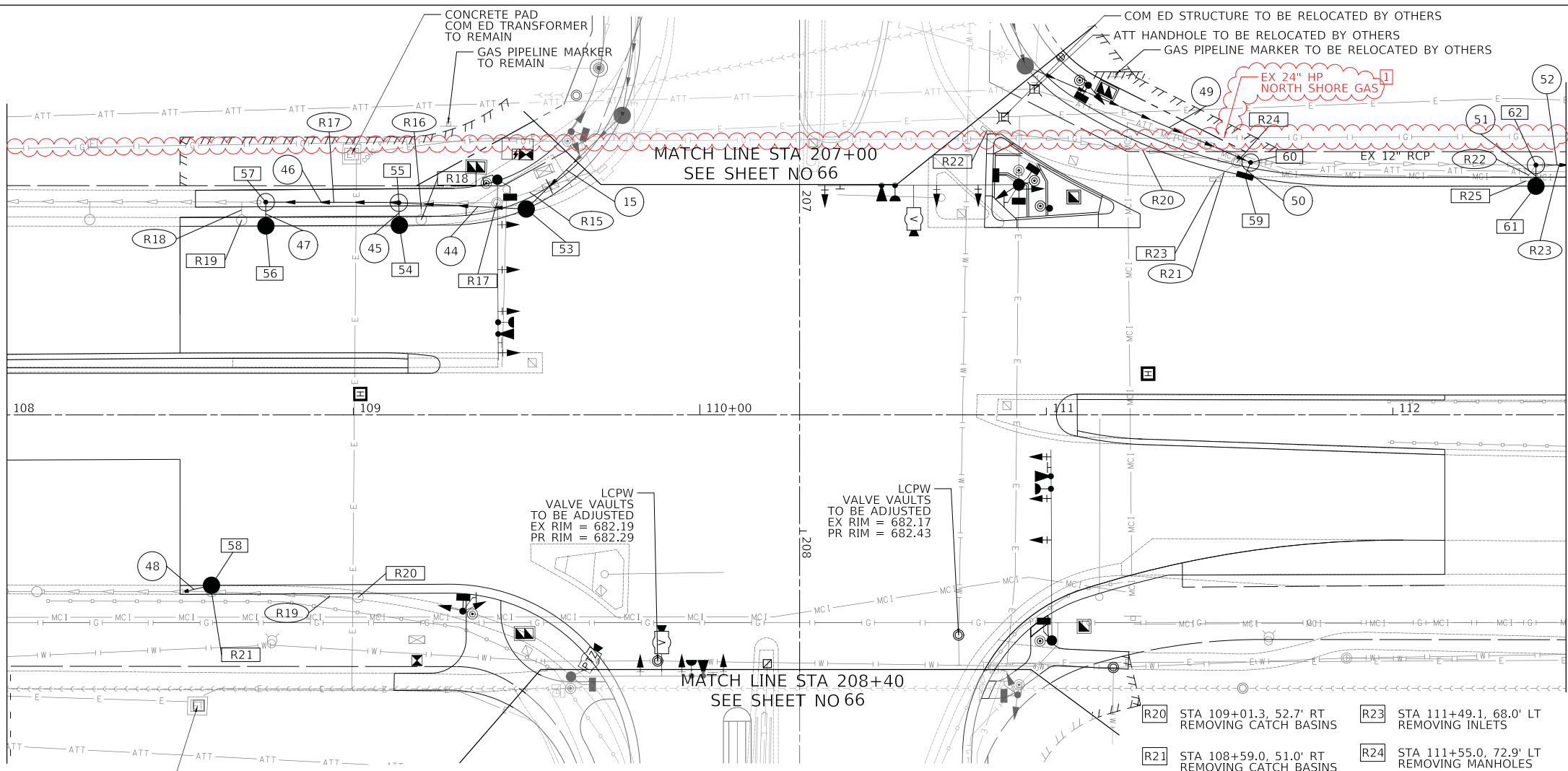


**LAKEVIEW PARKWAY IMPROVEMENT
DRAINAGE AND UTILITIES**
SHEET 8 OF 10 SHEETS STA 103+97.4 TO STA 108+00

FAU RTE	SECTION	COUNTY	TOTAL SHEETS	SHEET NO
2419	98-00026-02-WR	LAKE	210	71
CONTRACT NO 61115				
ILLINOIS FED AID PROJECT				

- [53] STA 109+49.9, 59.4' LT
CB TA 4 DIA T24 F&G
RIM = 682.54
INV = 678.75 (12" NE)
INV = 678.05 (12" W)
- [54] STA 109+13.3, 54.7' LT
CB TC T24 F&G
RIM = 682.42
INV = 677.95 (12" NW)
- [55] STA 109+13.1, 61.2' LT
MAN TA 4 DIA T1F CL
RIM = 682.75
INV = 677.92 (12" NW)
INV = 677.92 (12" NW)
INV = 677.90 (12" W)
- [56] STA 108+74.8, 54.5' LT
CB TC T24 F&G
RIM = 682.31
INV = 677.70 (12" NW)
- [57] STA 108+74.7, 61.4' LT
MAN TA 4 DIA T1F CL
RIM = 682.69
INV = 677.68 (12" SE)
INV = 677.70 (12" E)
INV = 677.67 (EX 15" W)
- [58] STA 108+59.0, 49.2' RT
CB TA 4 DIA T24 F&G
RIM = 682.89
INV = 678.90 (EX 15" W)
- [59] STA 111+57.3, 69.0' LT
CB TC T24 F&G
RIM = 682.14
INV = 678.00 (12" NE)
- [60] STA 111+59.0, 72.8' LT
MAN TA 4 DIA T1F CL
RIM = 682.95
INV = 678.98 (12" NW)
INV = 677.98 (12" SW)
INV = 677.68 (EX 12" E)
- [61] STA 112+41.3, 66.0' LT
CB TC T24 F&G
RIM = 682.03
INV = 677.53 (12" NE)
- [62] STA 112+41.3, 72.1' LT
MAN TA 4 DIA T1F CL
RIM = 682.40
INV = 677.52 (12" SW)
INV = 677.28 (EX 12" W)
INV = 677.26 (18" E)

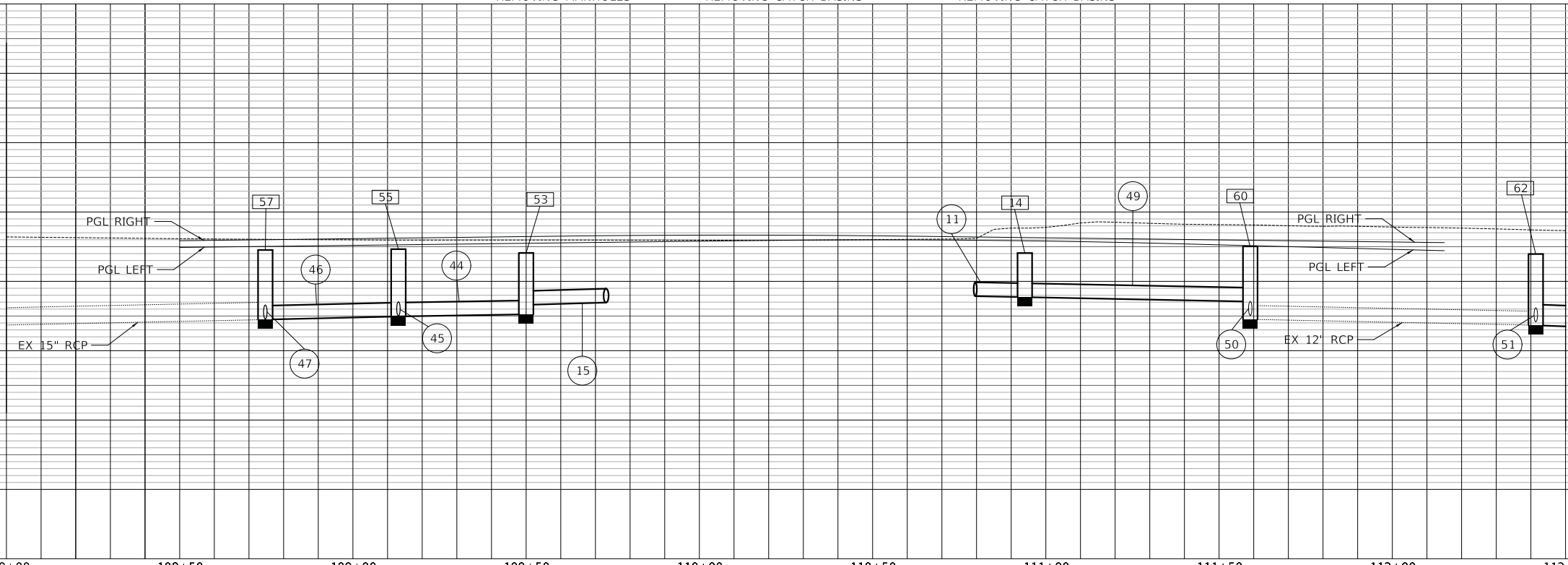
MATCH LINE STA 108+00
SEE SHEET NO 71



- (R15) 30' - STORM SEWER REMOVAL 12" TBF = 6 CU YD
- (R16) 3' - STORM SEWER REMOVAL 12" TBF = 1 CU YD
- (R17) 67' - STORM SEWER REMOVAL 12" TBF = 0 CU YD
- (R18) 3' - STORM SEWER REMOVAL 12" TBF = 1 CU YD
- (R19) 50' - STORM SEWER REMOVAL 15" TBF = 6 CU YD
- (R20) 73' - STORM SEWER REMOVAL 12" TBF = 12 CU YD
- (R21) 5' - STORM SEWER REMOVAL 12" TBF = 1 CU YD
- (R22) 4' - STORM SEWER REMOVAL 12" TBF = 0 CU YD
- (R23) 37' - STORM SEWER REMOVAL 12" TBF = 0 CU YD
- (15) SEE SHEET 66
- (44) 35' - STORM SEW CL A 2, 12" @ 0.50% TBF = 7 CU YD
- (45) 3' - STORM SEW CL A 2, 12" @ 0.50% TBF = 1 CU YD
- (46) 35' - STORM SEW CL A 2, 12" @ 0.50% TBF = 8 CU YD
- (47) 3' - STORM SEW CL A 2, 12" @ 0.50% TBF = 1 CU YD
- (48) 6' - STORM SEW CL A 1, 15" @ 0.50% TBF = 1 CU YD
- (49) 67' - STORM SEW CL A 1, 12" @ 0.44% TBF = 6 CU YD
- (50) 2' - STORM SEW CL A 2, 12" @ 0.50% TBF = 1 CU YD
- (51) 3' - STORM SEW CL A 2, 12" @ 1.00% TBF = 1 CU YD
- (52) 84' - STORM SEW CL A 2, 18" @ 0.94% TBF = 20 CU YD

ROUTE 60
(TOWNLINE ROAD)

MATCH LINE STA 108+00
SEE SHEET NO 71



MATCH LINE STA 112+50
SEE SHEET NO 73

DATE	
BY	
PLAN	
SURVEYED	
PLOTTED	
ALIGNED	
CHECKED	
FILE NAME	
NO.	

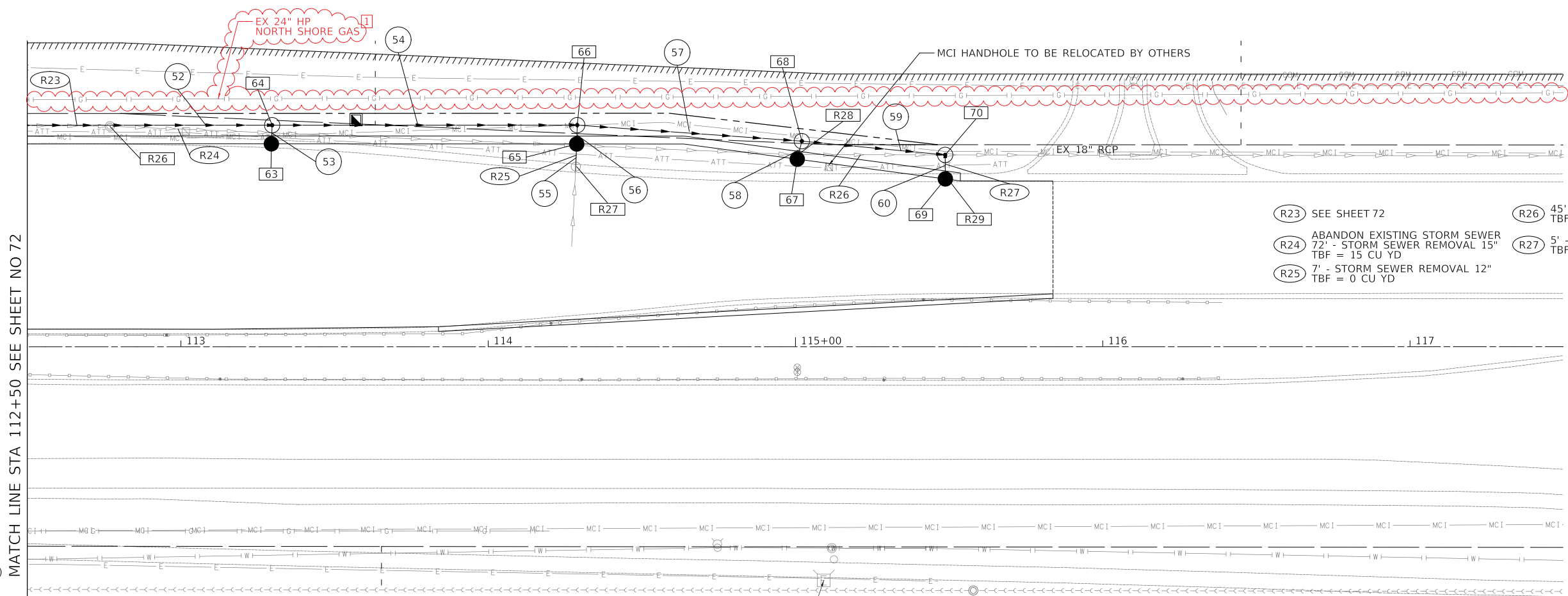
DATE	
BY	
PROFILE	
SURVEYED	
PLOTTED	
GRADES CHECKED	
STRUCTURE NOTATIONS CHECKED	
NO.	

PLAN	SURVEYED	DATE
	PLOTTED	BY
	ALIGNED	
	CHECKED	
	FILED	
	NO.	

PROFILE	SURVEYED	DATE
	PLOTTED	BY
	GRADES	
	CHECKED	
	STRUCTURE	
	NOTATION	
	NO.	

- 63 STA 113+29.4, 66.1' LT
CB TC T24 F&G
RIM = 681.01
INV = 676.51 (12" N)
- 64 STA 113+29.7, 72.1' LT
MAN TA 4 DIA T1F CL
RIM = 681.65
INV = 676.48 (12" S)
INV = 676.52 (18" W)
INV = 676.47 (18" E)
- 65 STA 114+28.8, 66.0' LT
CB TA 4 DIA T24 F&G
RIM = 680.70
INV = 676.61 (12" S)
INV = 676.57 (12" NE)
- 66 STA 114+29.0, 72.2' LT
MAN TA 4 DIA T1F CL
RIM = 682.06
INV = 676.48 (12" SW)
INV = 675.42 (18" W)
INV = 675.39 (18" E)
- 67 STA 115+00.8, 61.0' LT
CB TC T24 F&G
RIM = 681.02
INV = 676.52 (12" N)
- 68 STA 115+01.9, 67.6' LT
MAN TA 5 DIA T1F CL
RIM = 681.96
INV = 676.49 (12" S)
INV = 675.11 (18" W)
INV = 675.08 (18" E)
- 69 STA 115+48.8, 54.6' LT
CB TC T24 F&G
RIM = 681.25
INV = 676.75 (12" N)
- 70 STA 115+48.7, 62.5' LT
MAN TA 4 DIA T1F CL
RIM = 682.47
INV = 676.74 (12" S)
INV = 674.88 (18" W)
INV = 674.85 (EX 18" E)

MATCH LINE STA 112+50 SEE SHEET NO 72

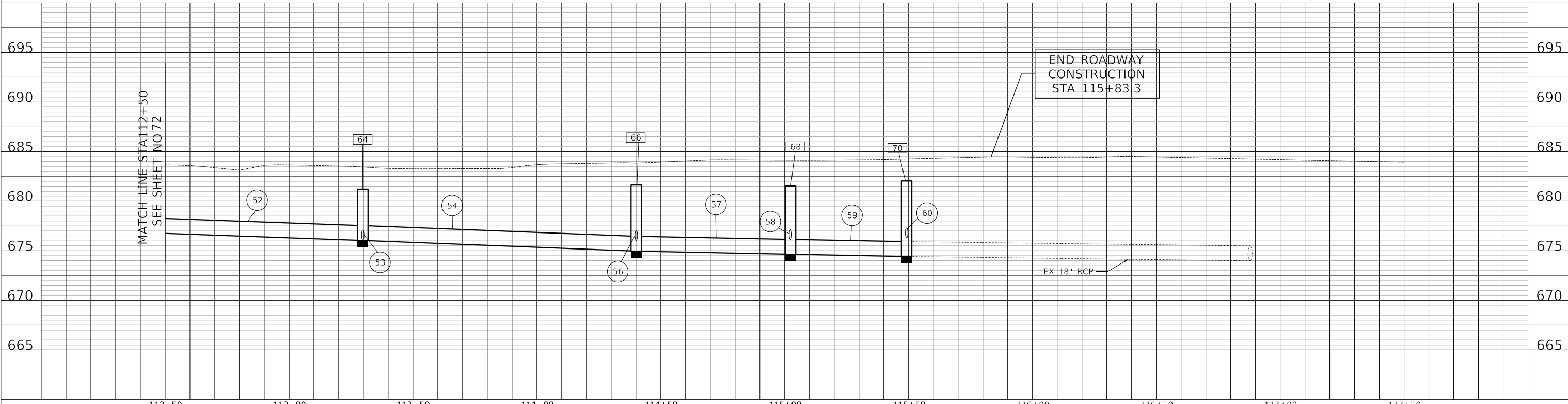


- R26 STA 112+76.9, 71.8' LT
REMOVING MANHOLES
- R27 STA 114+28.8, 58.6' LT
REMOVING CATCH BASINS
- R28 STA 115+00.9, 62.5' LT
REMOVING MANHOLES
- R29 STA 115+48.7, 55.8' LT
REMOVING INLETS

- 52 SEE SHEET 72
- 53 3' - STORM SEW CL A 2, 12" @ 1.00%
TBF = 1 CU YD
- 54 95' - STORM SEW CL A 2, 18" @ 1.00%
TBF = 36 CU YD
- 55 7' - STORM SEW CL A 2, 12" @ 1.00%
TBF = 2 CU YD
- 56 3' - STORM SEW CL A 2, 12" @ 1.50%
TBF = 2 CU YD
- 57 69' - STORM SEW CL A 2, 18" @ 0.50%
TBF = 38 CU YD
- 58 3' - STORM SEW CL A 2, 12" @ 1.00%
TBF = 1 CU YD
- 59 43' - STORM SEW CL A 2, 18" @ 0.50%
TBF = 31 CU YD
- 60 4' - STORM SEW CL A 2, 12" @ 1.00%
TBF = 1 CU YD

- R23 SEE SHEET 72
- R24 ABANDON EXISTING STORM SEWER
72' - STORM SEWER REMOVAL 15"
TBF = 15 CU YD
- R25 7' - STORM SEWER REMOVAL 12"
TBF = 0 CU YD
- R26 45' - STORM SEWER REMOVAL 18"
TBF = 33 CU YD
- R27 5' - STORM SEWER REMOVAL 12"
TBF = 0 CU YD

ROUTE 60
(TOWNLIN ROAD)



DESIGNED - JRR	REVISED - 12/23/2022	STATE OF ILLINOIS DEPARTMENT OF TRANSPORTATION	VERT 0 5 10 HORIZ 0 20 40	LAKEVIEW PARKWAY IMPROVEMENT DRAINAGE AND UTILITIES	FAU RTE	SECTION	COUNTY	TOTAL SHEETS	SHEET NO
DRAWN - JRR	REVISED - 2/22/2023				2419	98-00026-02-WR	LAKE	210	73
CHECKED - KRK	REVISED -				CONTRACT NO 61115				
DATE - 11/02/2022	REVISED -				ILLINOIS FED AID PROJECT				

Two Pierce Place, Suite 1400
Itasca, Illinois 60143
Tel: 630.773.3900 Fax: 630.773.3975
www.civiltechinc.com

MODEL: SH06LNAME\$
FILE NAME: ...3147 D102.dgn



REMOVAL AND RELOCATION NOTES:

THE FOLLOWING ITEMS SHALL BE REMOVED BY THE CONTRACTOR AND SHALL BE DISPOSED OF BY THEM OUTSIDE THE RIGHT-OF-WAY AT THEIR EXPENSE. THE SALVAGE VALUE OF THE REMOVED EQUIPMENT SHALL BE REFLECTED IN THE CONTRACT BID PRICE.

- 1 EACH CONTROLLER AND CABINET (COMPLETE)
- 1 EACH UNINTERRUPTABLE POWER SUPPLY
- 4 EACH STEEL MAST ARM ASSEMBLY AND POLE
- 3 EACH TRAFFIC SIGNAL POST
- 16 EACH 3-SECTION SIGNAL HEAD
- 4 EACH 5-SECTION SIGNAL HEAD
- 12 EACH SIGNAL BACKPLATES
- 3 EACH PEDESTRIAN PUSH-BUTTON
- 4 EACH PEDESTRIAN SIGNAL HEAD
- 1 EACH SERVICE INSTALLATION

THE FOLLOWING EXISTING TRAFFIC SIGNAL EQUIPMENT SHALL BE REMOVED BY THE CONTRACTOR, SHALL REMAIN THE PROPERTY OF VILLAGE OF VERNON HILLS, AND SHALL BE DELIVERED BY THE CONTRACTOR TO THE VILLAGE AS PER THE SPECIAL PROVISIONS.

- 4 EACH LIGHT DETECTOR
- 1 EACH LIGHT DETECTOR AMPLIFIER

LEFT ON GREEN ARROW ONLY

- (A) R10-5 30" X 36" SIGN PANEL TYPE 1 4 REQUIRED

REMOVAL AND RELOCATION NOTES:

THE FOLLOWING EXISTING TRAFFIC SIGNAL EQUIPMENT SHALL BE REMOVED BY THE CONTRACTOR AND RELOCATED TO THE TEMPORARY TRAFFIC SIGNAL INSTALLATION AND RESTORED TO OPERATION TO THE SATISFACTION OF THE ENGINEER AND LCDOT. IF ANY EQUIPMENT IS DAMAGED DURING RELOCATION, IT SHALL BE THE CONTRACTOR'S RESPONSIBILITY TO REPLACE THE EQUIPMENT AT NO ADDITIONAL COST TO THE CONTRACT. UPON REMOVAL OF THE TEMPORARY TRAFFIC SIGNAL, THIS EQUIPMENT SHALL BE EITHER BE RETURNED TO LCDOT, OR RELOCATED TO THE PROPOSED TRAFFIC SIGNAL INSTALLATION AS NOTED BELOW.

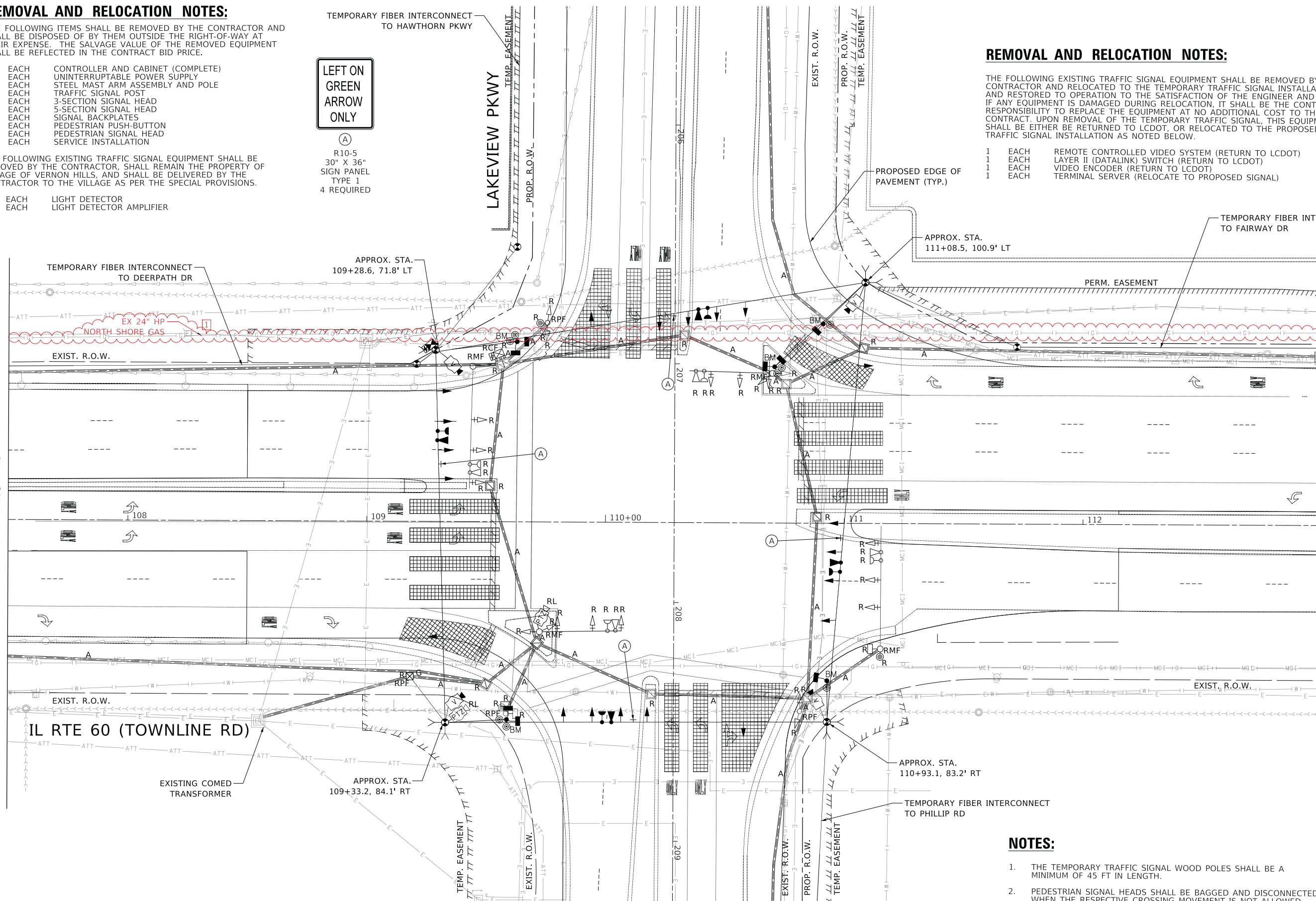
- 1 EACH REMOTE CONTROLLED VIDEO SYSTEM (RETURN TO LCDOT)
- 1 EACH LAYER II (DATALINK) SWITCH (RETURN TO LCDOT)
- 1 EACH VIDEO ENCODER (RETURN TO LCDOT)
- 1 EACH TERMINAL SERVER (RELOCATE TO PROPOSED SIGNAL)

PLAN	SURVEYED	DATE
	PLOTTED	
	ALIGNED	
	CHECKED	
	FILED	
	NO.	
	BY	
	DATE	

PROFILE	SURVEYED	DATE
	PLOTTED	
	GRADES CHECKED	
	STRUCTURE NOTATIONS CHECKED	
	NO.	
	BY	
	DATE	

MATCH LINE STA 107+50
SEE SHEET NO 119

MATCH LINE STA 113+00
SEE SHEET NO 119



NOTES:

- 1. THE TEMPORARY TRAFFIC SIGNAL WOOD POLES SHALL BE A MINIMUM OF 45 FT IN LENGTH.
- 2. PEDESTRIAN SIGNAL HEADS SHALL BE BAGGED AND DISCONNECTED WHEN THE RESPECTIVE CROSSING MOVEMENT IS NOT ALLOWED.

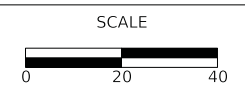
TS 6875
ECON 160



Two Pierce Place, Suite 1400
Itasca, Illinois 60143
Tel: 630.773.3900 Fax: 630.773.3975
www.civiltechinc.com

DESIGNED -	AS	REVISED -	12/23/2022
DRAWN -	AS	REVISED -	01/27/2023
CHECKED -	JJE	REVISED -	2/22/2023
DATE -	11/02/2022	REVISED -	

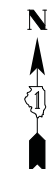
**STATE OF ILLINOIS
DEPARTMENT OF TRANSPORTATION**



**LAKEVIEW PARKWAY IMPROVEMENT
TEMPORARY TRAFFIC SIGNAL AND REMOVAL PLAN (SHEET 1 OF 2)
IL ROUTE 60 (TOWNLINE ROAD) AND LAKEVIEW PARKWAY**

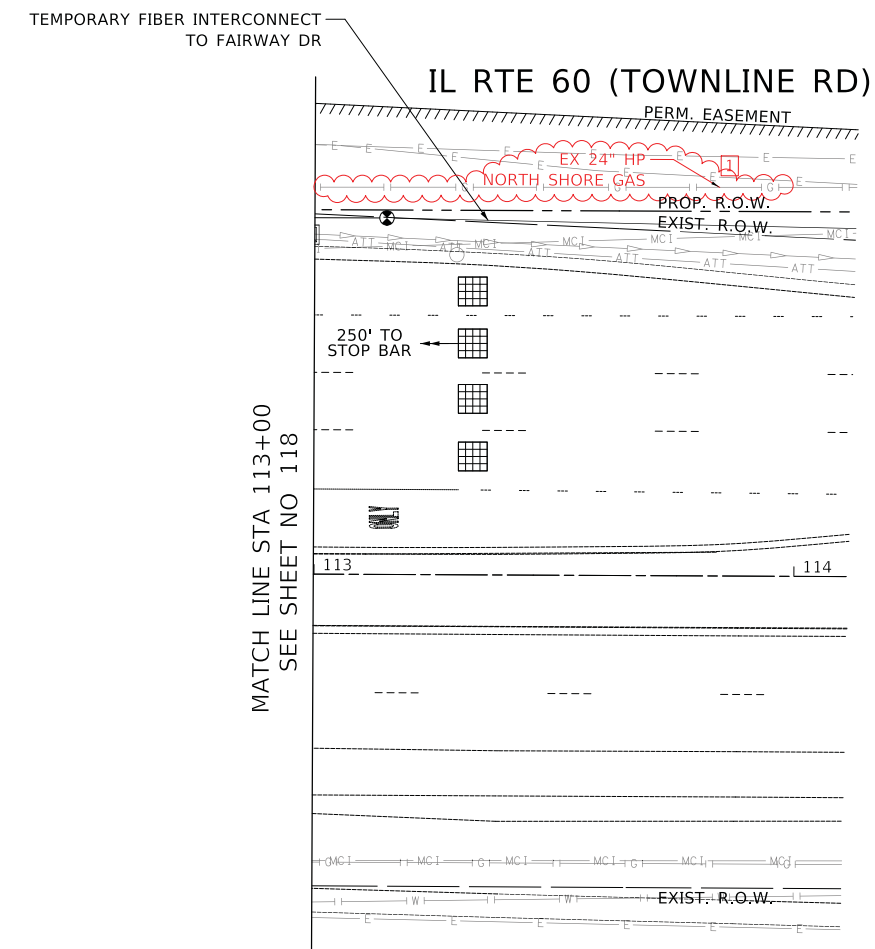
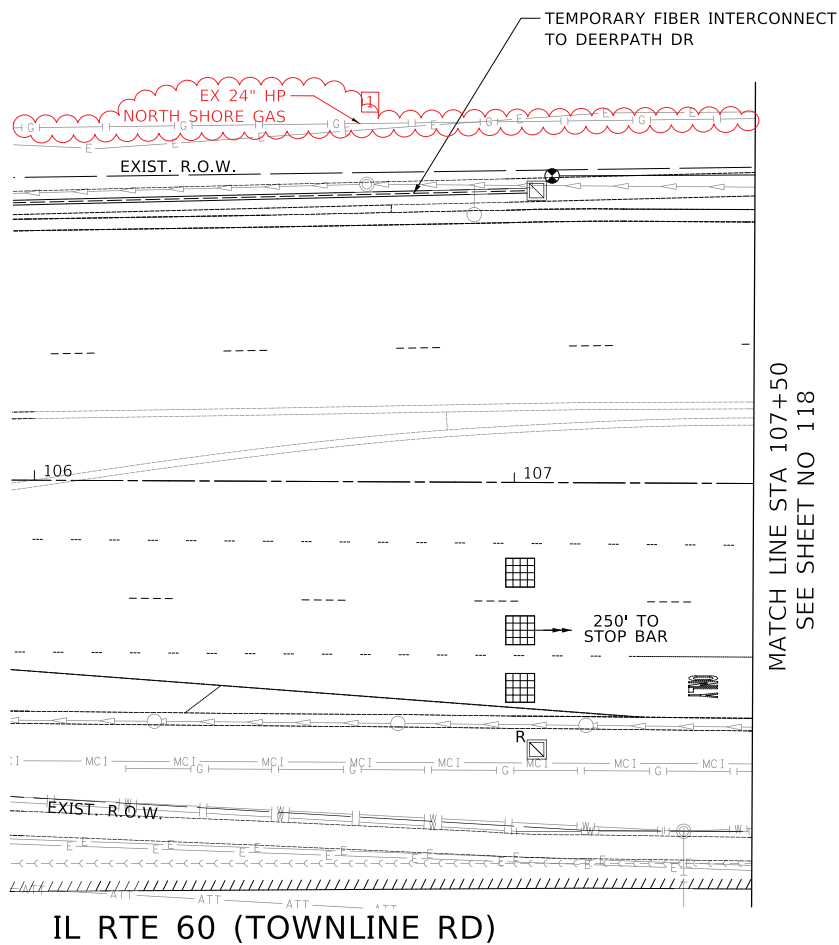
FAU RTE	SECTION	COUNTY	TOTAL SHEETS	SHEET NO
2419	98-00026-02-WR	LAKE	210	118
CONTRACT NO 61115				
ILLINOIS FED AID PROJECT				

MODEL: SH06LNAME5
FILE NAME: ...119_Temporary Traffic Signal and Removal Plan_IL_60-Lakeview St_1.dgn



PLAN	SURVEYED	BY	DATE
	PLOTTED		
NOTE BOOK NO.	ALIGNMENT CHECKED		
	CADD FILE NAME		

PROFILE	SURVEYED	BY	DATE
	GRADES CHECKED		
NOTE BOOK NO.	STRUCTURE NOTATIONS CHECKED		



MODEL: SH06LNAME5
FILE NAME: ...110_Temporary Traffic Signal and Removal Plan_IL_60-Lakeview Sht 2.dgn



Two Pierce Place, Suite 1400
Itasca, Illinois 60143
Tel: 630.773.3900 Fax: 630.773.3975
www.civiltechinc.com

DESIGNED - AS	REVISED - (2/22/2023) 1
DRAWN - AS	REVISED -
CHECKED - JJE	REVISED -
DATE - 11/02/2022	REVISED -

STATE OF ILLINOIS
DEPARTMENT OF TRANSPORTATION



**LAKEVIEW PARKWAY IMPROVEMENT
TEMPORARY TRAFFIC SIGNAL AND REMOVAL PLAN (SHEET 2 OF 2)
IL ROUTE 60 (TOWNLINE ROAD) AND LAKEVIEW PARKWAY**

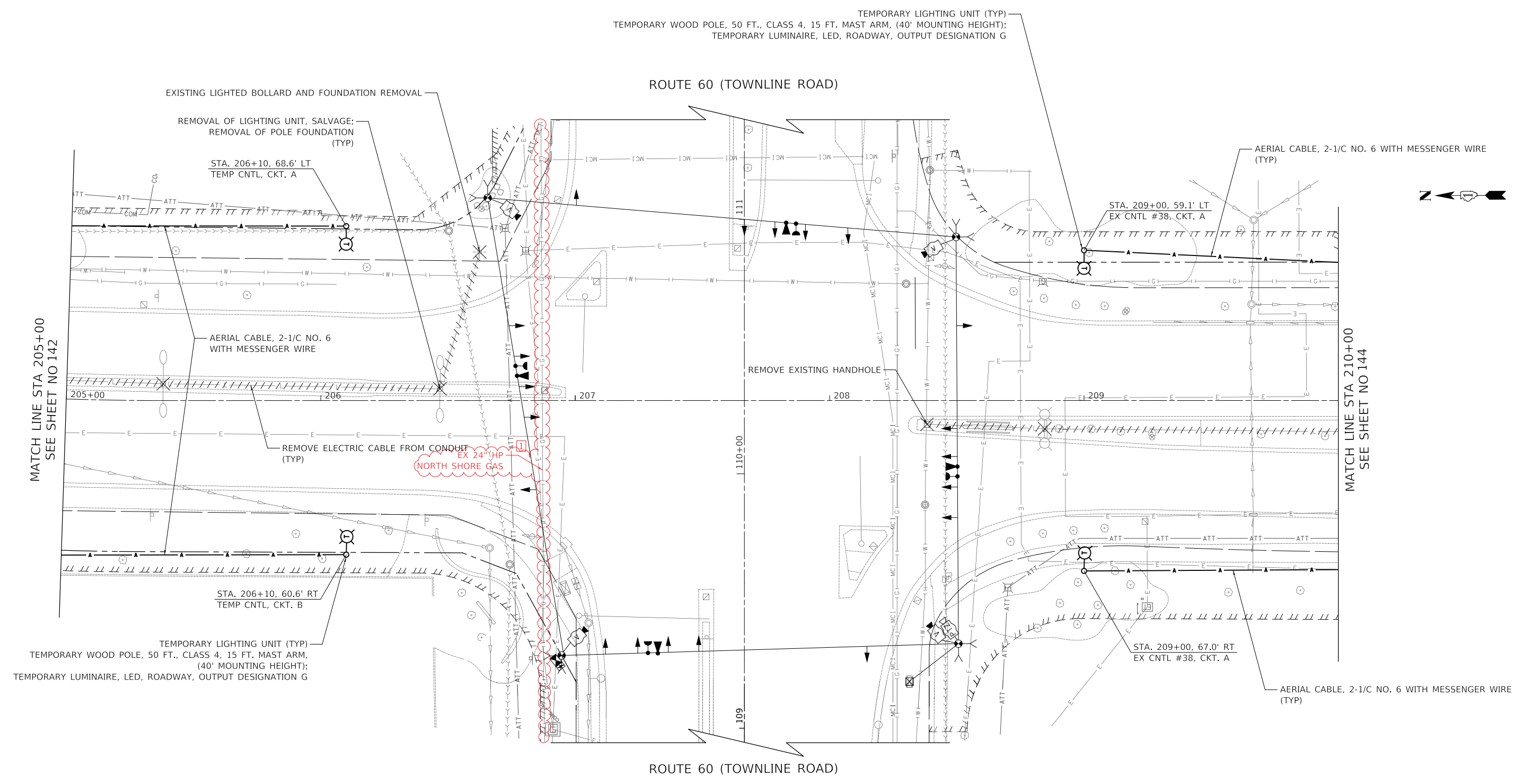
SHEET 2 OF 2 SHEETS STA TO STA

FAU RTE	SECTION	COUNTY	TOTAL SHEETS	SHEET NO.
2419	98-00026-02-WR	LAKE	210	119
CONTRACT NO 61115			ILLINOIS FED AID PROJECT	

TS 6875
ECON 160

PLAN	SURVEYED	DATE
	PLOTTED	BY
	ALIGNED	
	CHECKED	
	FILED	
	NO.	
	NO.	
	NO.	

PROFILE	SURVEYED	DATE
	PLOTTED	BY
	GRADES	
	CHECKED	
	STRUCTURE	
	NOTATIONS	
	NO.	
	NO.	
	NO.	



LAKEVIEW PARKWAY

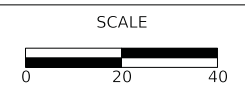
MODEL: SMODELMAINRES
FILE NAME: ...31477_L001.dgn



Two Pierce Place, Suite 1400
Itasca, Illinois 60143
Tel: 630.773.3900 Fax: 630.773.3975
www.civiltechinc.com

DESIGNED	-	JRR	REVISED	-	2/22/2023
DRAWN	-	JRR	REVISED	-	
CHECKED	-	KRK	REVISED	-	
DATE	-	11/02/2022	REVISED	-	

STATE OF ILLINOIS
DEPARTMENT OF TRANSPORTATION

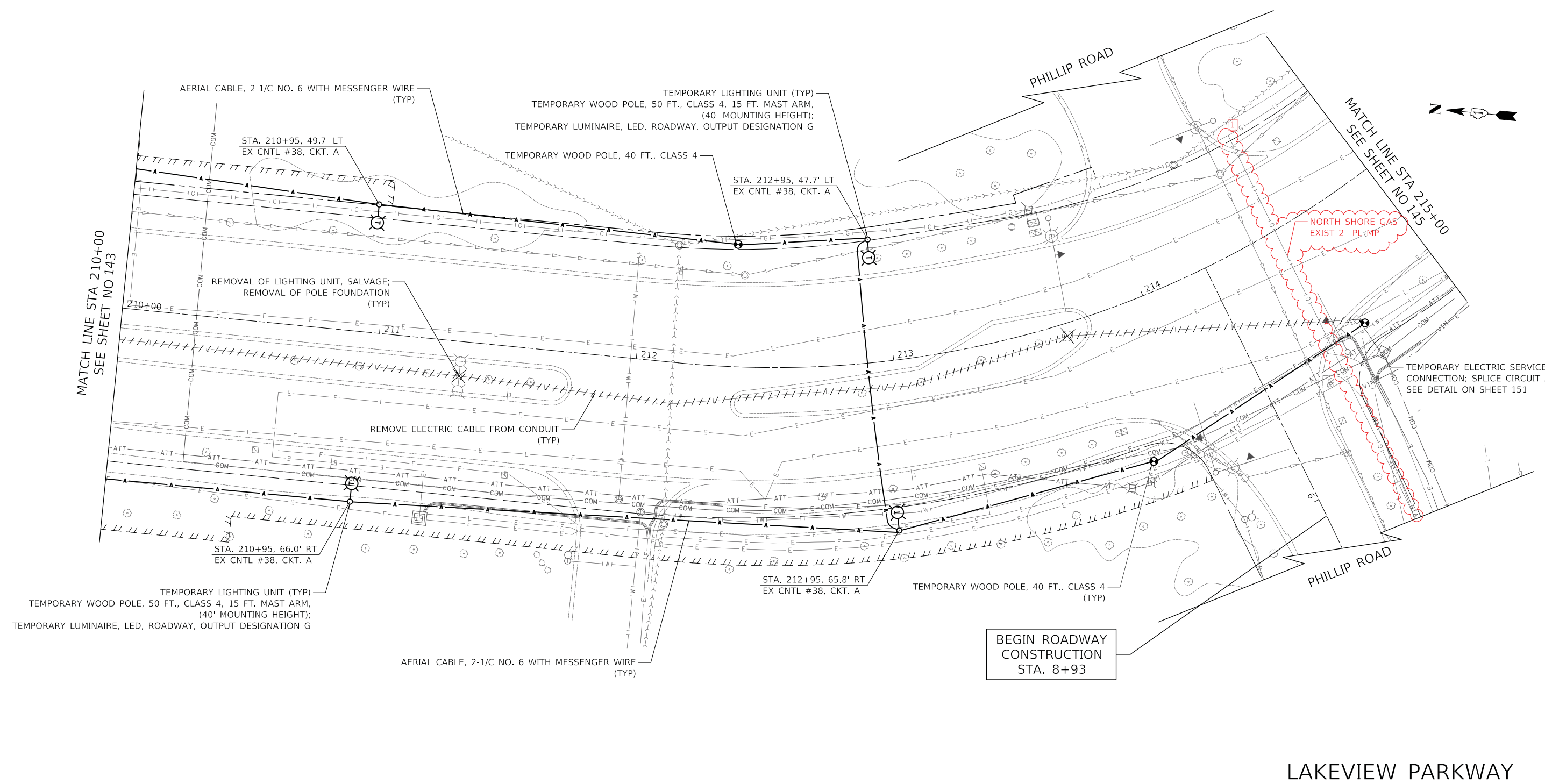


LAKEVIEW PARKWAY IMPROVEMENT
TEMPORARY LIGHTING PLAN
SHEET 2 OF 5 SHEETS STA 205+00 TO STA 210+00

FAU RTE	SECTION	COUNTY	TOTAL SHEETS	SHEET NO
2419	98-00026-02-WR	LAKE	210	143
CONTRACT NO 61115				
ILLINOIS FED AID PROJECT				

PLAN	SURVEYED	DATE
	PLOTTED	
	ALIGNMENT CHECKED	
	CONSTRUCTION CHECKED	
	FILE NAME	
	NO.	

PROFILE	SURVEYED	DATE
	PLOTTED	
	GRADES CHECKED	
	STRUCTURE NOTATIONS CHECKED	
	NO.	



MATCH LINE STA 210+00
SEE SHEET NO 143

MATCH LINE STA 215+00
SEE SHEET NO 145

BEGIN ROADWAY
CONSTRUCTION
STA. 8+93

LAKEVIEW PARKWAY

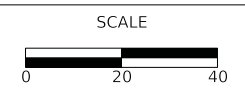
MODEL: SMODELNAME
FILE NAME: ...3447.LRD1.dgn



Two Pierce Place, Suite 1400
Itasca, Illinois 60143
Tel: 630.773.3900 Fax: 630.773.3975
www.civiltechinc.com

DESIGNED -	JRR	REVISED -	2/22/2023
DRAWN -	JRR	REVISED -	
CHECKED -	KRK	REVISED -	
DATE -	11/02/2022	REVISED -	

STATE OF ILLINOIS
DEPARTMENT OF TRANSPORTATION



LAKEVIEW PARKWAY IMPROVEMENT
TEMPORARY LIGHTING PLAN
SHEET 3 OF 5 SHEETS STA 210+00 TO STA 215+00

FAU RTE	SECTION	COUNTY	TOTAL SHEETS	SHEET NO
2419	98-00026-02-WR	LAKE	210	144
CONTRACT NO 61115				
ILLINOIS FED AID PROJECT				

PLAN	SURVEYED	DATE
	PLOTTED	
	ALIGNMENT CHECKED	
	NOTE BOOK NO.	
	FILE NAME	

PROFILE	SURVEYED	DATE
	GRADES CHECKED	
	STRUCTURE NOTATIONS CHECKED	
	NOTE BOOK NO.	
	FILE NAME	

MODEL: SH06LMAEMES
FILE NAME: ...3447.L008.dgn

CIVILTECH
Two Pierce Place, Suite 1400
Itasca, Illinois 60143
Tel: 630.773.3900 Fax: 630.773.3975
www.civiltechinc.com

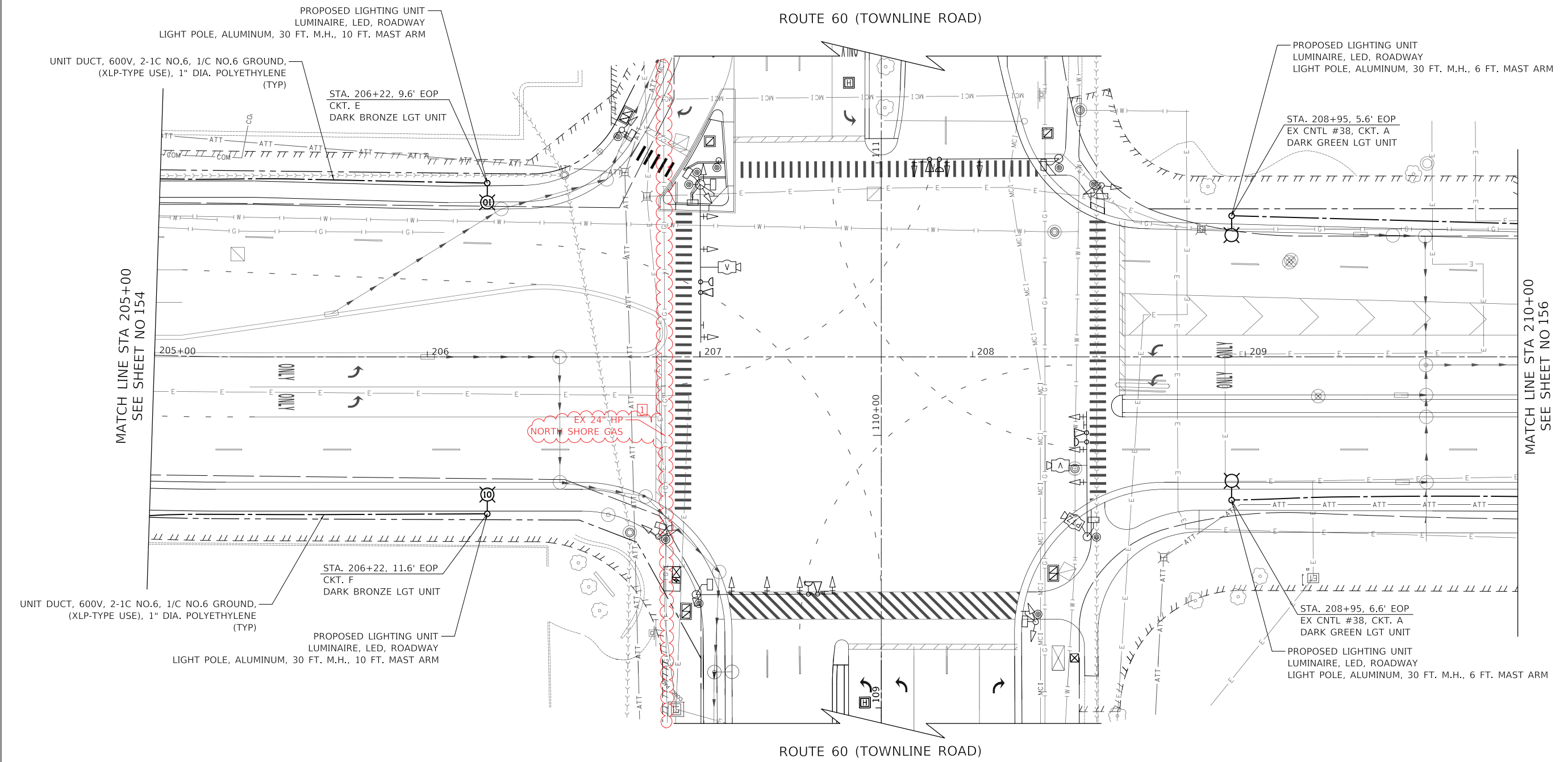
DESIGNED	-	JRR	REVISED	-	01/27/2023
DRAWN	-	JRR	REVISED	-	2/22/2023
CHECKED	-	KRK	REVISED	-	
DATE	-	11/02/2022	REVISED	-	

**STATE OF ILLINOIS
DEPARTMENT OF TRANSPORTATION**



**LAKEVIEW PARKWAY IMPROVEMENT
LIGHTING PLAN**
SHEET 3 OF 6 SHEETS STA 205+00 TO STA 210+00

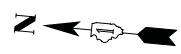
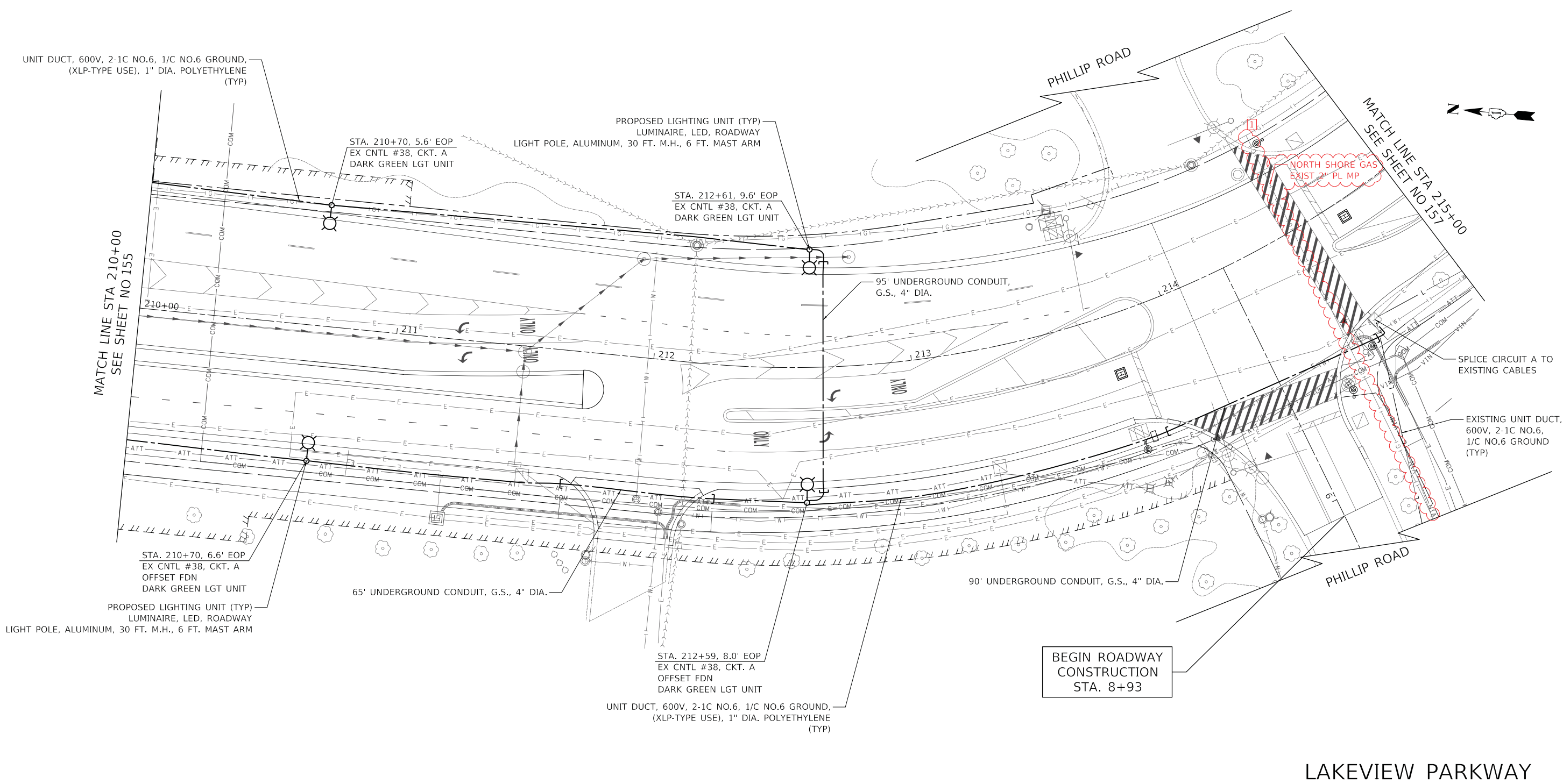
FAU RTE	SECTION	COUNTY	TOTAL SHEETS	SHEET NO
2419	98-00026-02-WR	LAKE	210	155
CONTRACT NO 61115				
ILLINOIS FED AID PROJECT				



LAKEVIEW PARKWAY

PLAN	SURVEYED	DATE
	PLOTTED	
	ALIGNED	
	CHECKED	
	FILED	
	NO.	
	NO.	
	NO.	

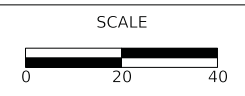
PROFILE	SURVEYED	DATE
	PLOTTED	
	GRADES	
	CHECKED	
	STRUCTURE	
	NOTATION	
	NO.	
	NO.	
	NO.	



Two Pierce Place, Suite 1400
 Itasca, Illinois 60143
 Tel: 630.773.3900 Fax: 630.773.3975
 www.civiltechinc.com

DESIGNED	-	JRR	REVISED	-	2/22/2023
DRAWN	-	JRR	REVISED	-	
CHECKED	-	KRK	REVISED	-	
DATE	-	11/02/2022	REVISED	-	

STATE OF ILLINOIS
DEPARTMENT OF TRANSPORTATION



LAKEVIEW PARKWAY IMPROVEMENT
LIGHTING PLAN

SHEET 4 OF 6 SHEETS STA 210+00 TO STA 215+00

FAU RTE	SECTION	COUNTY	TOTAL SHEETS	SHEET NO
2419	98-00026-02-WR	LAKE	210	156
CONTRACT NO 61115				
ILLINOIS FED AID PROJECT				

MODEL: SMODELNAME
 FILE NAME: ...3447.L008.dgn