

STATE OF ILLINOIS
DEPARTMENT OF TRANSPORTATION

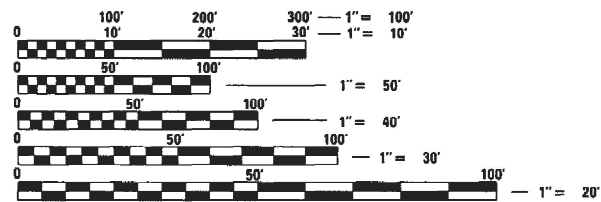
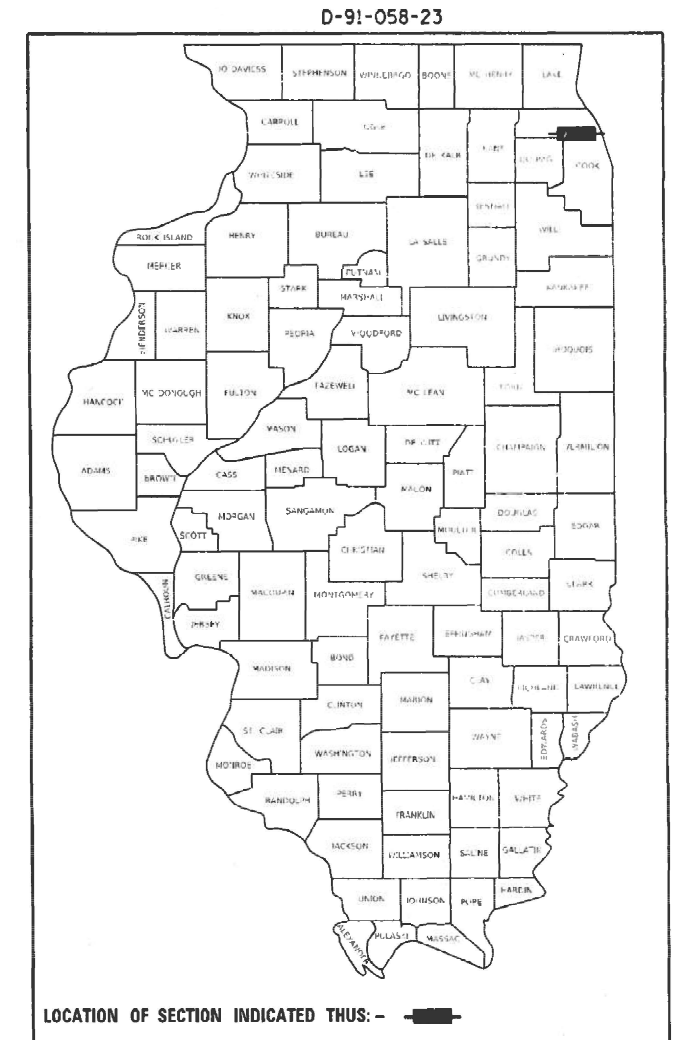
** FAI 290
PAP 389

F.A. RTE.	SECTION	COUNTY	TOTAL SHEETS	SHEET NO.
**	FAI 290 22 LITTER	COOK	5	1
		ILLINOIS	CONTRACT NO. 62U59	

FOR INDEX OF SHEETS, SEE SHEET NO.

PROPOSED
HIGHWAY PLANS

FAI ROUTE 290/FAP ROUTE 389: I-290/IL 110
AUSTIN BLVD TO WELLS STREET
SECTION: FAI 290 22 LITTER
EXPRESSWAY HIGHWAY CLEANING (LITTER/DEBRIS REMOVAL)
COUNTY: COOK
C-91-085-23



FULL SIZE PLANS HAVE BEEN PREPARED USING STANDARD ENGINEERING SCALES. REDUCED SIZED PLANS WILL NOT CONFORM TO STANDARD SCALES. IN MAKING MEASUREMENTS ON REDUCED PLANS, THE ABOVE SCALES MAY BE USED.

J.U.L.I.E.
JOINT UTILITY LOCATION INFORMATION FOR EXCAVATION
1-800-892-0123
OR 811

LOCATION MAP - SEE INDEX OF SHEETS

PROJECT ENGINEER: RODRIGO LEDEZMA (847) 705-4580
PROJECT MANAGER: J. ALAIN MIDY (847) 221-3056

GROSS LENGTH = 77,088 FT. = 14.6 MILE
NET LENGTH = 77,088 FT. = 14.6 MILE

CONTRACT NO. 62U59

STATE OF ILLINOIS
DEPARTMENT OF TRANSPORTATION

SUBMITTED December 8 20 22
Jose Rios REGIONAL ENGINEER
February 3, 2023
Jose Rios
ENGINEER OF DESIGN AND ENVIRONMENT
February 3, 2023
Stephen M. Smith
DIRECTOR OF HIGHWAYS PROJECT IMPLEMENTATION

PRINTED BY THE AUTHORITY
OF THE STATE OF ILLINOIS

INDEX OF SHEETS

1. TITLE SHEET
2. INDEX OF SHEETS
APPLICABLE STATE STANDARDS
3. SUMMARY OF QUANTITIES
SCHEDULE OF CLEANING STARTING DATES
4. EXPRESSWAY CLEANING: I-290 & IL 110
5. TRAFFIC CONTROL DETAILS FOR FREEWAY SHOULDER CLOSURES
AND PARTIAL RAMP CLOSURES (TC-17)

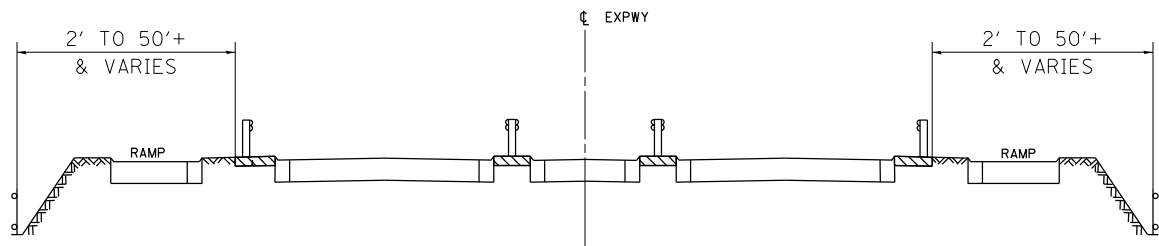
STATE STANDARDS

- | | |
|-----------|---|
| 701106-02 | OFF-ROAD OPERATION MULTILANE, MORE THAN 15' AWAY |
| 701426-09 | LANE CLOSURE, MULTILANE, INTERMITTENT OR MOVING OPER., FOR SPEEDS \geq 45 MPH |
| 701901-08 | TRAFFIC CONTROL DEVICES |

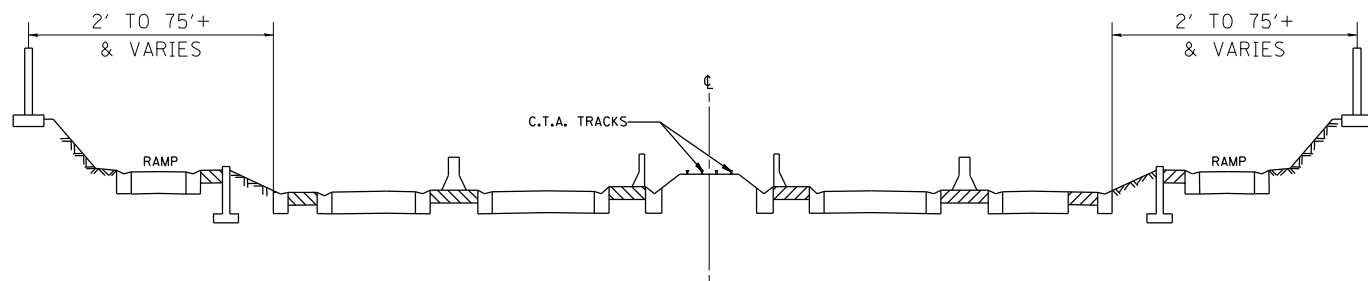
MODEL: Default
 FILE NAME: p:\ultra\paw.bentley.com\PIV\DOT\Documents\DOT Offices\District 1\Projects\Sweeping_Contracts\CAD\Data\Design\Sweeping\Contract2022.dgn

** FAI 290
PAP 389

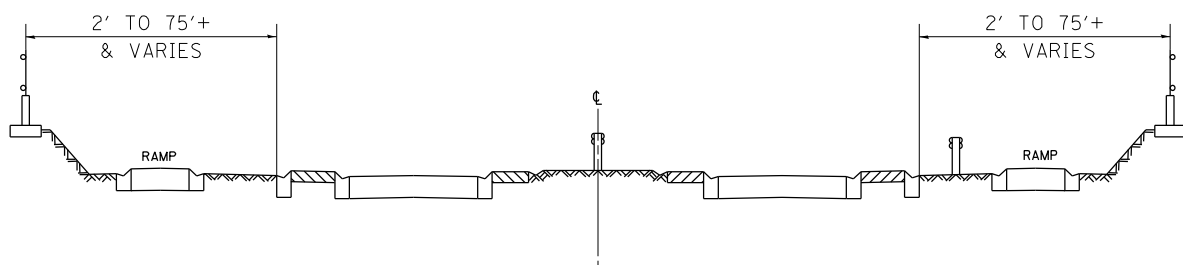
USER NAME = Rodrigo.Ledezma PLOT SCALE = 100,0000 ' / in. PLOT DATE = 2/3/2023	DESIGNED - DRAWN - CHECKED - DATE -	REVISED - REVISED - REVISED - REVISED -	STATE OF ILLINOIS DEPARTMENT OF TRANSPORTATION	INDEX OF SHEETS AND STATE STANDARDS	F.A.I. RTE. SECTION FAI 290 22 LITTER	COUNTY COOK	TOTAL SHEETS 5	SHEET NO. 2
				SCALE: SHEET OF SHEETS STA. TO STA.	CONTRACT NO. 62U59 ILLINOIS FED. AID PROJECT			



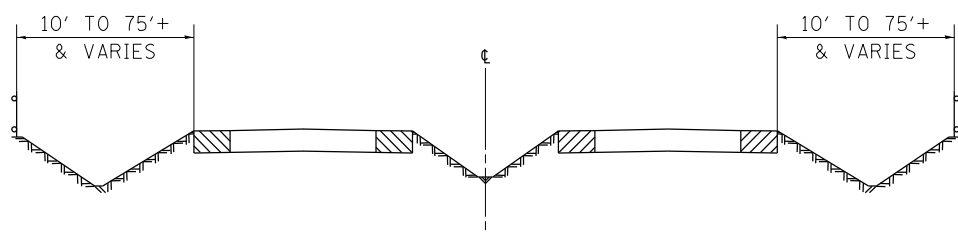
TYPICAL EXPRESSWAY CROSS-SECTION NO. 1



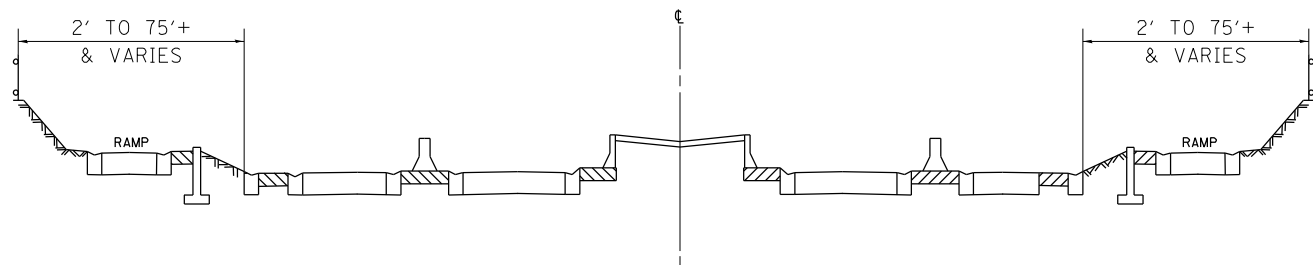
TYPICAL EXPRESSWAY CROSS-SECTION NO. 2



TYPICAL EXPRESSWAY CROSS-SECTION NO. 3



TYPICAL EXPRESSWAY CROSS-SECTION NO. 4



TYPICAL EXPRESSWAY CROSS-SECTION NO. 5

NOTES:

1. SCHEDULE MAY VARY AS DIRECTED BY THE ENGINEER.
2. NO WORK WILL BE ALLOWED DURING ANY LEGAL HOLIDAY PERIOD.
3. ALL SCHEDULES OF ANTICIPATED STARTING DATES SHOWN ARE TENTATIVE AS DETERMINED BY THE DEPARTMENT'S OPERATIONAL NEEDS.
4. NO DAILY CONTRACTOR WORK REQUESTS/ SCHEDULING SHALL BE AUTHORIZED OR APPROVED TO START WHEN IT IS DETERMINED BY THE ENGINEER THAT WEATHER CONDITIONS WILL BE UNFAVORABLE. APPROVAL OF ALL DAILY CONTRACTOR WORK SCHEDULE REQUEST SHALL BE SOLELY DETERMINED BY THE ENGINEER AND OR PROJECT SUPERVISOR.
5. ALL SHOULDER CLOSURES SHALL BE IMMEDIATELY REMOVED DURING ALL ADVERSE WEATHER CONDITIONS **WITHOUT EXCEPTION**, INCLUDING BUT NOT LIMITED TO RAIN, WET ROAD SURFACE (SPRAY FROM TIRES), MIST, DRIZZLE, SLEET, SNOW, FOG AND ANY OTHER CIRCUMSTANCE DETERMINED UNSAFE BY THE ENGINEER. **THE CONTRACTOR SHALL IMPLEMENT THIS CONTRACT REQUIREMENT IMMEDIATELY WITHOUT WAITING FOR DEPARTMENT INSTRUCTIONS.**
6. NO WORK WILL BE ALLOWED ON THE FOLLOWING DATES UNLESS IT IS CONSIDERED AN EMERGENCY, IMMEDIATE HAZARD OR ANY WORK AS DESIGNATED BY THE DEPARTMENT THAT REQUIRES FIRST PRIORITY CORRECTIVE ACTION:

- EASTER HOLIDAY
- MEMORIAL DAY HOLIDAY
- INDEPENDENCE DAY HOLIDAY
- LABOR DAY HOLIDAY
- THANKSGIVING HOLIDAY
- CHRISTMAS/NEW YEAR'S HOLIDAY

SUMMARY OF QUANTITIES

CODE NO.	ITEM	UNIT	URBAN	100 % STATE
			TOTAL QUANTITIES	EXPRESSWAY
X0326643	LITTER PICKING	MILE	417.6	417.6

MODEL: Default
 FILE: \\murf.com\public\paw.bentley.com\PIV\DOT\Documents\DOT Offices\District 11\Projects\Sweeping_Contracts\CAD\Drawings\Contract2022.dwg

USER NAME = Rodrigo.Ledezma	DESIGNED -	REVISED -
PLOT SCALE = 100,0000' / in.	DRAWN -	REVISED -
PLOT DATE = 12/6/2022	CHECKED -	REVISED -
	DATE -	REVISED -

STATE OF ILLINOIS
DEPARTMENT OF TRANSPORTATION

SUMMARY OF QUANTITIES SCHEDULE OF STARTING DATES				
SCALE:	SHEET	OF	SHEETS	STA. TO STA.

** FAI 290
PAP 389

F.A.I. RTE.	SECTION	COUNTY	TOTAL SHEETS	SHEET NO.
**	FAI 290 22 LITTER	COOK	5	3
			CONTRACT NO. 62U59	
ILLINOIS FED. AID PROJECT				

