

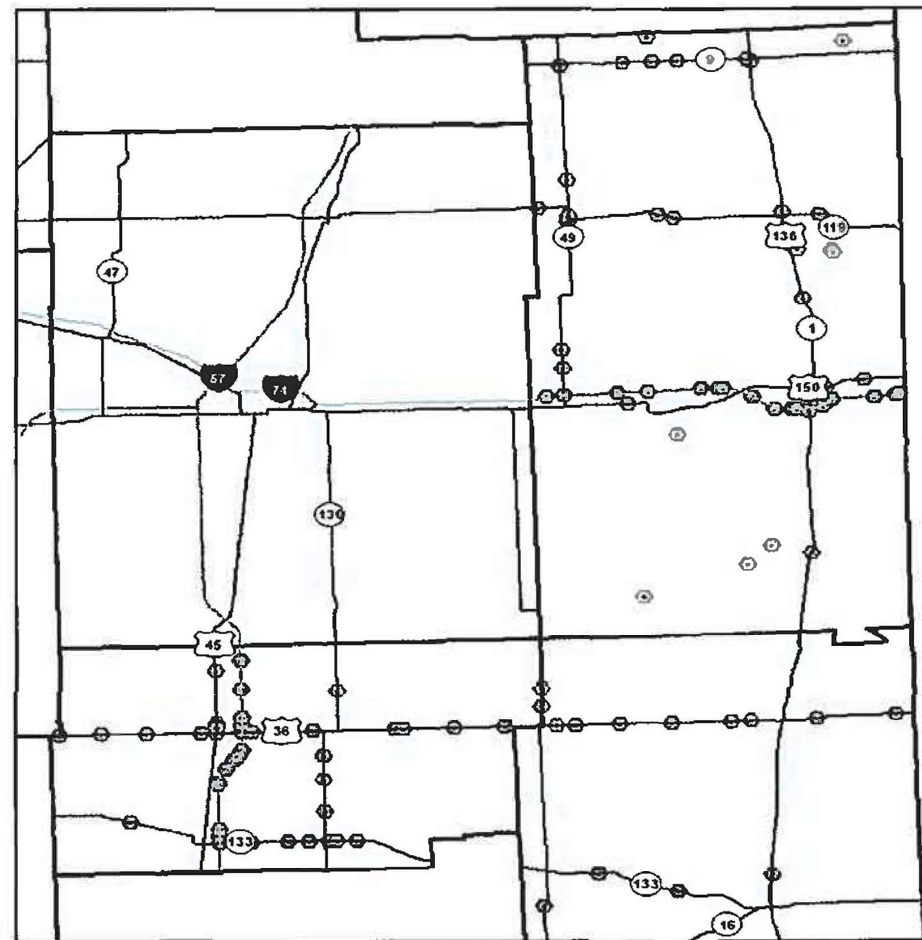
STATE OF ILLINOIS  
DEPARTMENT OF TRANSPORTATION

FOR INDEX OF SHEETS, SEE SHEET NO. 2

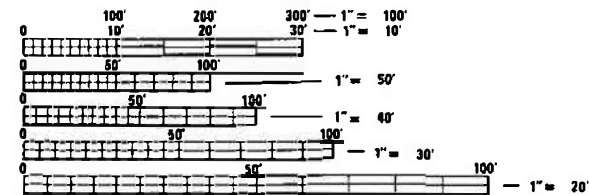
PROPOSED  
HIGHWAY PLANS

VARIOUS ROUTES  
SECTION FY2023 BRIDGE DECK SEALING  
PROJECT HBFP-STP-NHPP-G1H0(855)  
BRIDGE PRESERVATION  
VARIOUS COUNTIES

C-95-070-22



GROSS LENGTH = x.xx FT. = x.xxx MILE  
NET LENGTH = x.xx FT. = x.xxx MILE



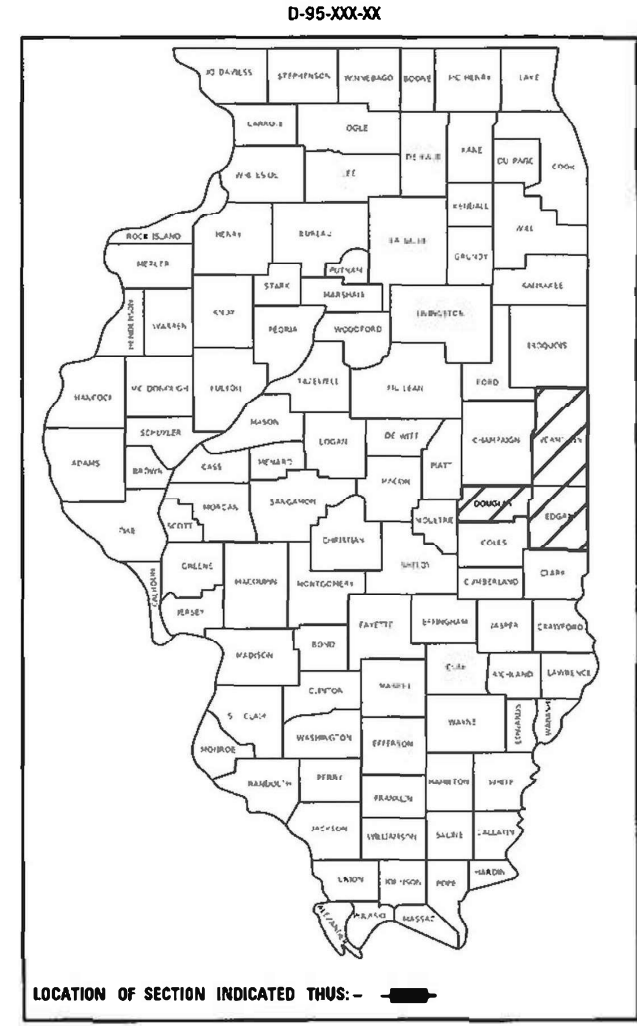
FULL SIZE PLANS HAVE BEEN PREPARED USING STANDARD ENGINEERING SCALES. REDUCED SIZED PLANS WILL NOT CONFORM TO STANDARD SCALES. IN MAKING MEASUREMENTS ON REDUCED PLANS, THE ABOVE SCALES MAY BE USED.

J.U.L.I.E.  
JOINT UTILITY LOCATION INFORMATION FOR EXCAVATION  
1-800-892-0123  
OR 811

PROJECT ENGINEER: TIM BRANDENBURG  
PROJECT MANAGER

CONTRACT NO. 70G25

F.A. RTE.	SECTION	COUNTY	TOTAL SHEETS	SHEET NO.
VAR. /	FY23 BRIDGE DECK SEALING	VARIOUS	24	1
		ILLINOIS	CONTRACT NO. 70G25	



STATE OF ILLINOIS  
DEPARTMENT OF TRANSPORTATION

SUBMITTED 11/15 20 22  
Kensil A. Barnettson REGIONAL ENGINEER  
February 3, 2023  
Scott A. Etkin  
ENGINEER OF DESIGN AND ENVIRONMENT  
February 3, 2023  
Stephen M. Smith  
DIRECTOR OF HIGHWAYS PROJECT IMPLEMENTATION

PRINTED BY THE AUTHORITY  
OF THE STATE OF ILLINOIS

## INDEX OF SHEETS

SHEET NO.	DESCRIPTION
1	COVER SHEET
2	INDEX OF SHEETS GENERAL NOTES AND HIGHWAY STANDARDS
3 - 5	DOUGLAS COUNTY LOCATION MAP
6	EDGAR COUNTY LOCATION MAP
7 - 11	VERMILION COUNTY LOCATION MAP
12	SUMMARY OF QUANTITIES
13 - 17	TYPICAL APPLICATION SECTIONS
18 - 19	DOUGLAS COUNTY SCHEDULES
20	EDGAR COUNTY SCHEDULES
21 - 23	VERMILION COUNTY SCHEDULES
24	D5 DETAIL 70200000 TC&P DEVICES (ROAD & SIDEROAD/STREET CLOSURES)

## GENERAL NOTES

G.N.-100	ENGLISH UNITS OF MEASUREMENT SHALL GOVERN OVER AND SUPERSEDE ANY METRIC UNITS SHOWN IN THIS CONTRACT. WHERE INCLUDED, METRIC UNITS ARE FOR INFORMATION ONLY.
G.N. - PAVEMENT MARKINGS AND MARKERS	EXISTING PAVEMENT MARKINGS AND RAISED REFLECTIVE PAVEMENT MARKERS SHALL BE TEMPORARILY COVERED PRIOR TO APPLICATION OF THE DECK SURFACE TREATMENT, TO PREVENT THE MATERIAL FROM BEING APPLIED TO THE MARKINGS AND MARKERS. THE TEMPORARY COVERING SHALL BE REMOVED AFTER APPLICATION OF THE DECK SURFACE TREATMENT AND PRIOR TO OPENING TO TRAFFIC. COST IS INCLUDED WITH THE DECK SURFACE TREATMENT SPECIFIED.
NO COMMITMENTS	

## LIST OF HIGHWAY STANDARDS

STANDARD NO.	DESCRIPTION
0000001-08	STANDARD SYMBOLS, ABBREVIATIONS AND PATTERNS
001006	DECIMAL OF AN INCH AND OF A FOOT
701201-05	LANE CLOSURE, 2 LANE, 2 WAY, DAY ONLY
701411-09	LANE CLOSURE, MULTILANE, AT ENTRANCES OR EXT RAMP
701426-09	LANE CLOSURE, MULTILANE, INTERMITTENT OR MOVING OPERATIONS FOR SPEEDS >= 45 MPH
701427-05	LANE CLOSURE, MULTILANE, INTERMITTENT OR MOVING OPERATIONS FOR SPEEDS <= 40 MPH
701601-09	URBAN LANE CLOSURE, MULTILANE, 1W OR 2W WITH NONTRAVESABLE MEDIAN
701901-08	TRAFFIC CONTROL DEVICES

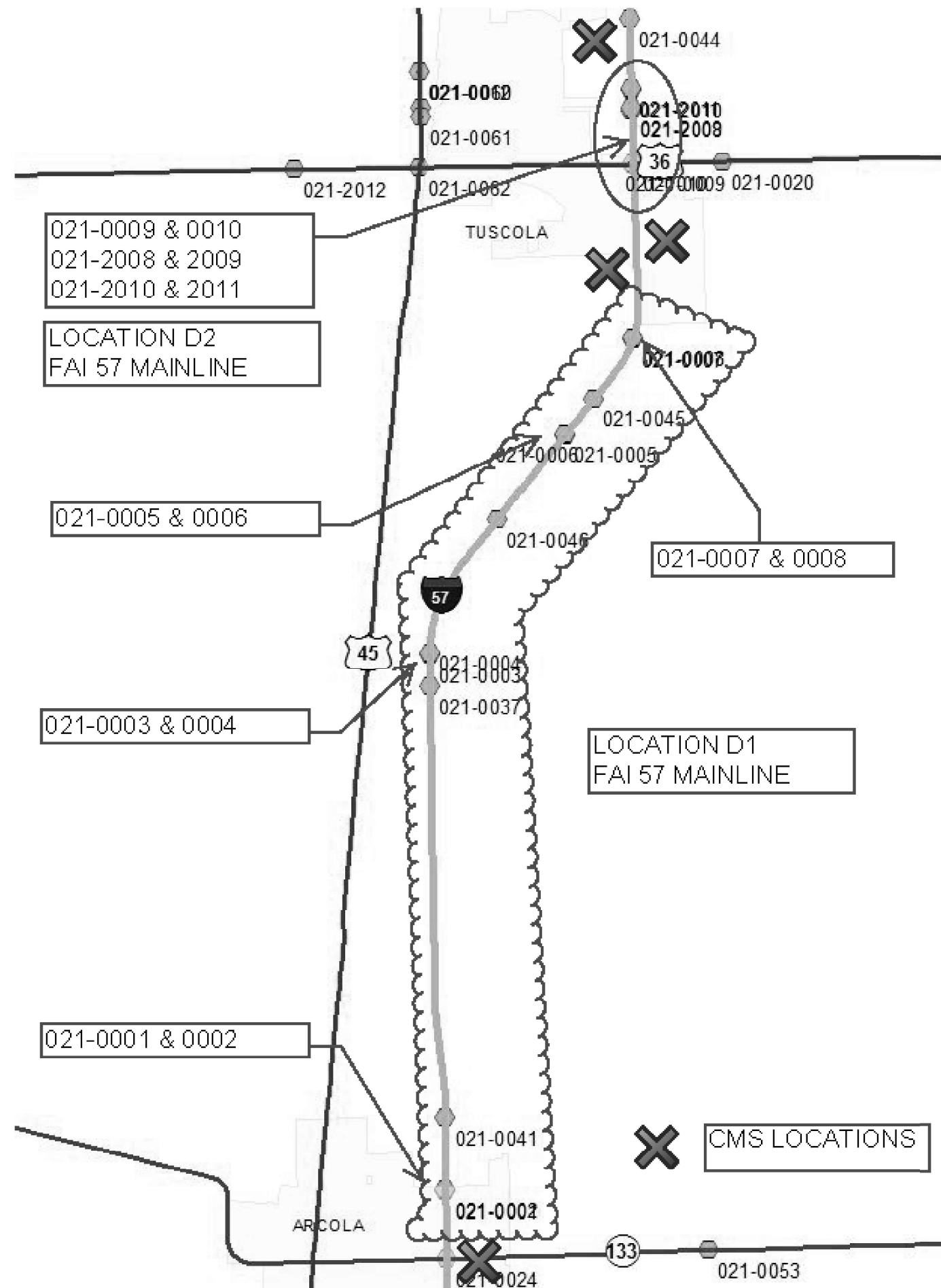
STATE OF ILLINOIS  
DEPARTMENT OF TRANSPORTATION

INDEX OF SHEETS, GENERAL NOTES  
& HIGHWAY STANDARDS

SCALE: \_\_\_\_\_ SHEET 1 OF 1 SHEETS STA. \_\_\_\_\_ TO STA. \_\_\_\_\_

F.A. RTE.	SECTION	COUNTY	TOTAL SHEETS	SHEET NO.
VAR.	FY23 BRIDGE DECK SEALING	VARIOUS	24	2
			CONTRACT NO. 70G25	
			ILLINOIS FED. AID PROJECT	





021-0009 & 0010  
021-2008 & 2009  
021-2010 & 2011

LOCATION D2  
FAI 57 MAINLINE

021-0005 & 0006

021-0007 & 0008

021-0003 & 0004

LOCATION D1  
FAI 57 MAINLINE

021-0001 & 0002

✕ CMS LOCATIONS

MODEL: \\MODELS\MAME  
 FILE NAME: \\pub\pub\bea\bea\com\PIV\DOT\Documents\DOT Office\Dir\dir: S:\Project\70G25\CADD\DATA\Hydraulic\70G25-ht-naps.dgn

USER NAME = brandenburgj	DESIGNED - TJB	REVISED - _____
	DRAWN - _____	REVISED - _____
PLOT SCALE = 40,0000' / in.	CHECKED - _____	REVISED - _____
PLOT DATE = 5/25/2022	DATE - 5/24/2022	REVISED - _____

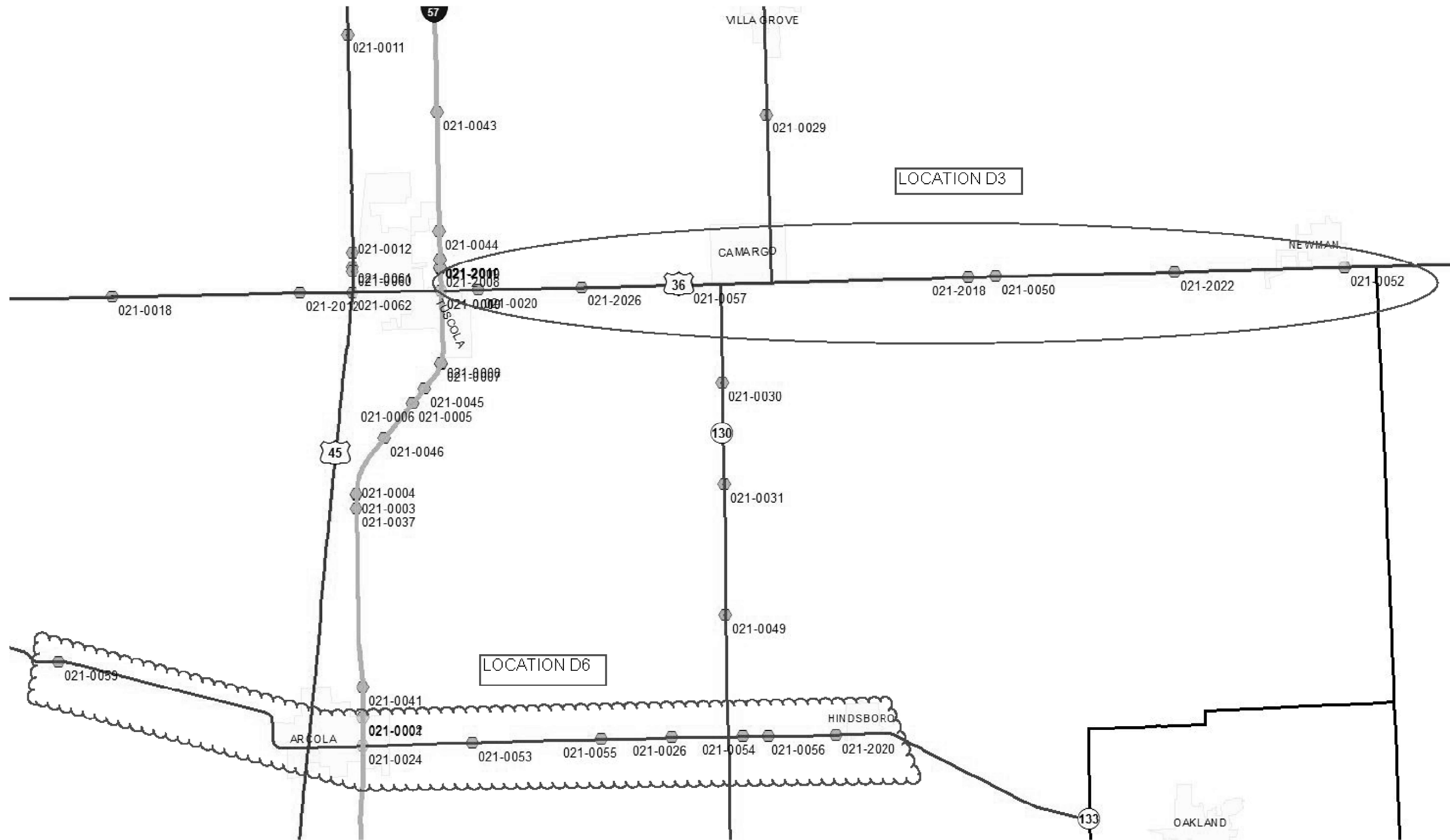
**STATE OF ILLINOIS  
DEPARTMENT OF TRANSPORTATION**

**DOUGLAS COUNTY LOCATION MAP**

SCALE: \_\_\_\_\_ SHEET 1 OF 9 SHEETS STA. \_\_\_\_\_ TO STA. \_\_\_\_\_

F.A. RTE.	SECTION	COUNTY	TOTAL SHEETS	SHEET NO.
VAR.	FY23 BRIDGE DECK SEALING	VARIOUS	24	3
			CONTRACT NO. 70G25	
ILLINOIS FED. AID PROJECT				

MODEL: \\MODELS\MAPS  
 FILE: MAPS: 70G25\70G25\CADD\DATA\Hydraulic\70G25-ht-naps.dgn



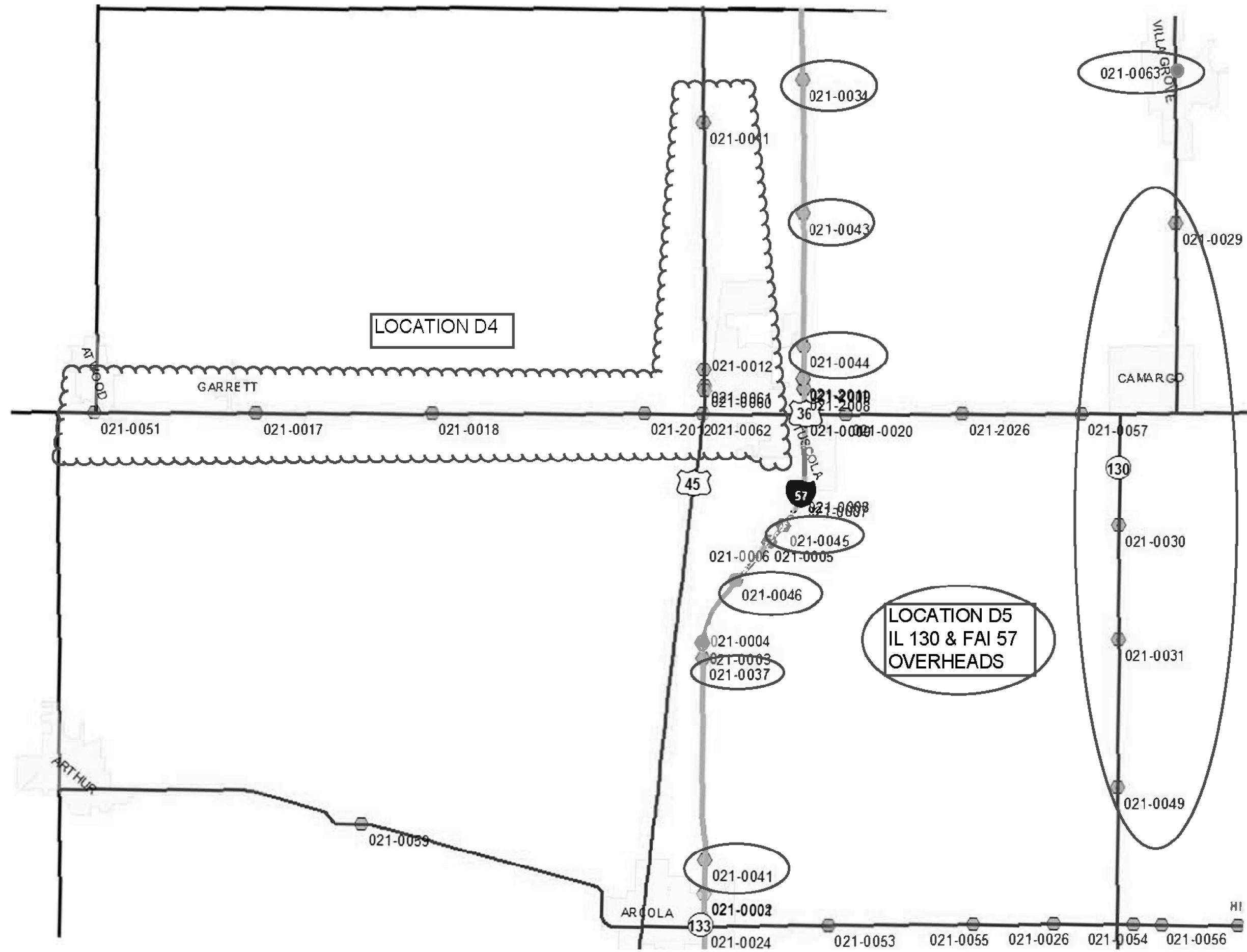
USER NAME = brandenburgj	DESIGNED - TJB	REVISED - _____
DRAWN - _____	REVISIONS - _____	REVISED - _____
PLOT SCALE = 40,0000 * / in.	CHECKED - _____	REVISED - _____
PLOT DATE = 5/25/2022	DATE - 5/24/2022	REVISED - _____

**STATE OF ILLINOIS  
 DEPARTMENT OF TRANSPORTATION**

**DOUGLAS COUNTY LOCATION MAP**

SCALE: \_\_\_\_\_ SHEET 2 OF 9 SHEETS STA. \_\_\_\_\_ TO STA. \_\_\_\_\_

F.A. RTE.	SECTION	COUNTY	TOTAL SHEETS	SHEET NO.
VAR.	FY23 BRIDGE DECK SEALING	VARIOUS	24	4
			CONTRACT NO. 70G25	
ILLINOIS FED. AID PROJECT				



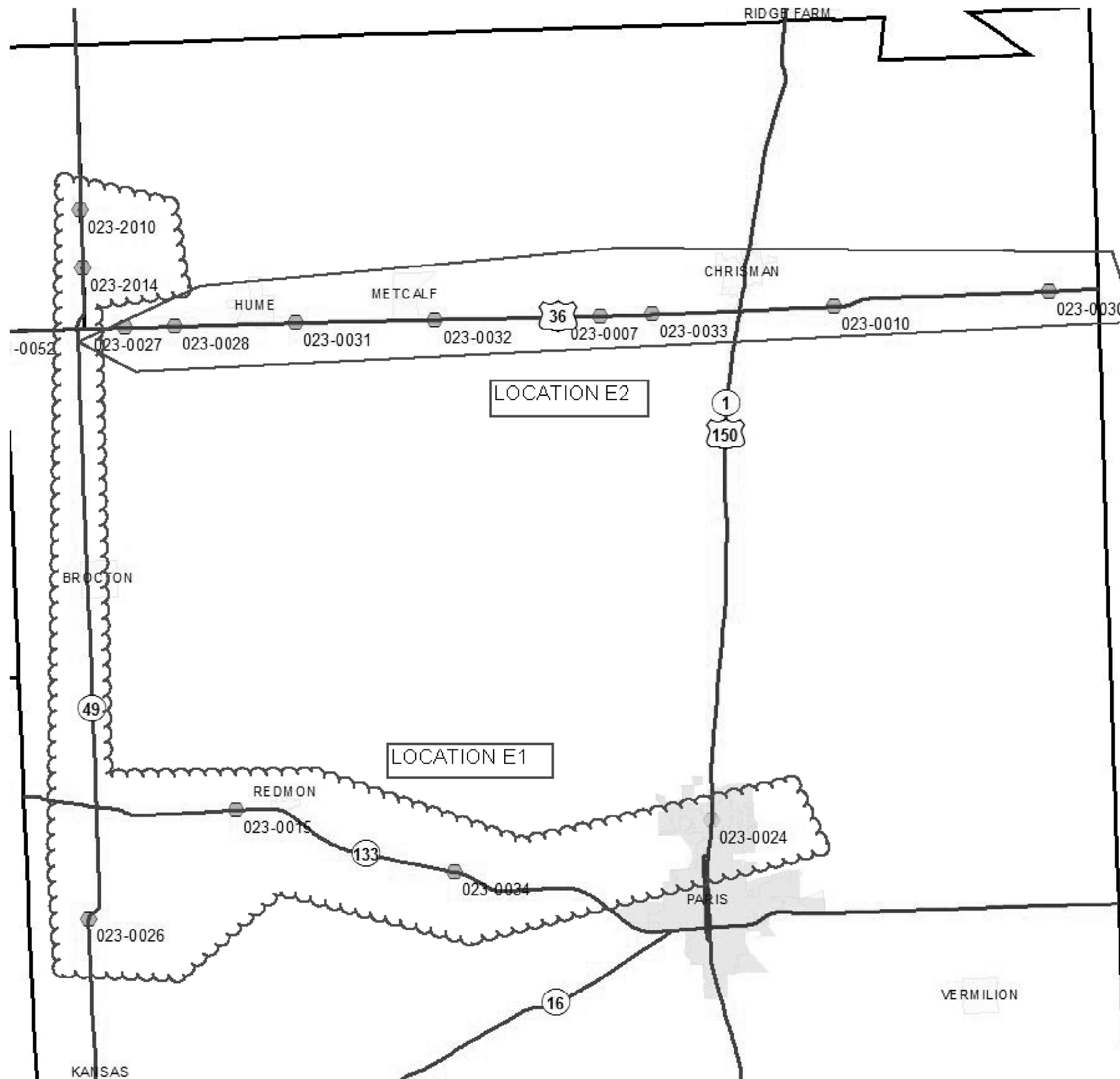
MODEL: \\MODELS\MAPS  
 FILE: MAPS: 70G25\70G25\CADD\DATA\Hydraulic\70G25-PT-Map.dwg  
 PROJECT: \\PROJECTS\70G25\CADD\DATA\Hydraulic\70G25-PT-Map.dwg

USER NAME = brandenburgj	DESIGNED - TJB	REVISED - _____
DRAWN - _____	REVISIONS - _____	REVISIONS - _____
PLOT SCALE = 40,0000 * / in.	CHECKED - _____	REVISIONS - _____
PLOT DATE = 5/25/2022	DATE - 5/24/2022	REVISIONS - _____

**STATE OF ILLINOIS**  
**DEPARTMENT OF TRANSPORTATION**

**DOUGLAS COUNTY LOCATION MAP**  
 SCALE: \_\_\_\_\_ SHEET 3 OF 9 SHEETS STA. \_\_\_\_\_ TO STA. \_\_\_\_\_

F.A. RTE.	SECTION	COUNTY	TOTAL SHEETS	SHEET NO.
VAR.	FY23 BRIDGE DECK SEALING	VARIOUS	24	5
			CONTRACT NO. 70G25	
ILLINOIS FED. AID PROJECT				



MODEL: I:\MODELS\MAME  
 FILE: MAME: I:\pub\edc\paw\_bend\paw.com\PIV\DOT\Documents\DOT\_Offices\Dir\edc\_S\Project\0570G25\CADD\DATA\Hydraulic\0570G25-ht-naps.dgn

USER NAME = brandenburgj	DESIGNED - TJB	REVISED - _____
	DRAWN - _____	REVISED - _____
PLOT SCALE = 40,0000' / in.	CHECKED - _____	REVISED - _____
PLOT DATE = 5/23/2022	DATE - 5/24/2022	REVISED - _____

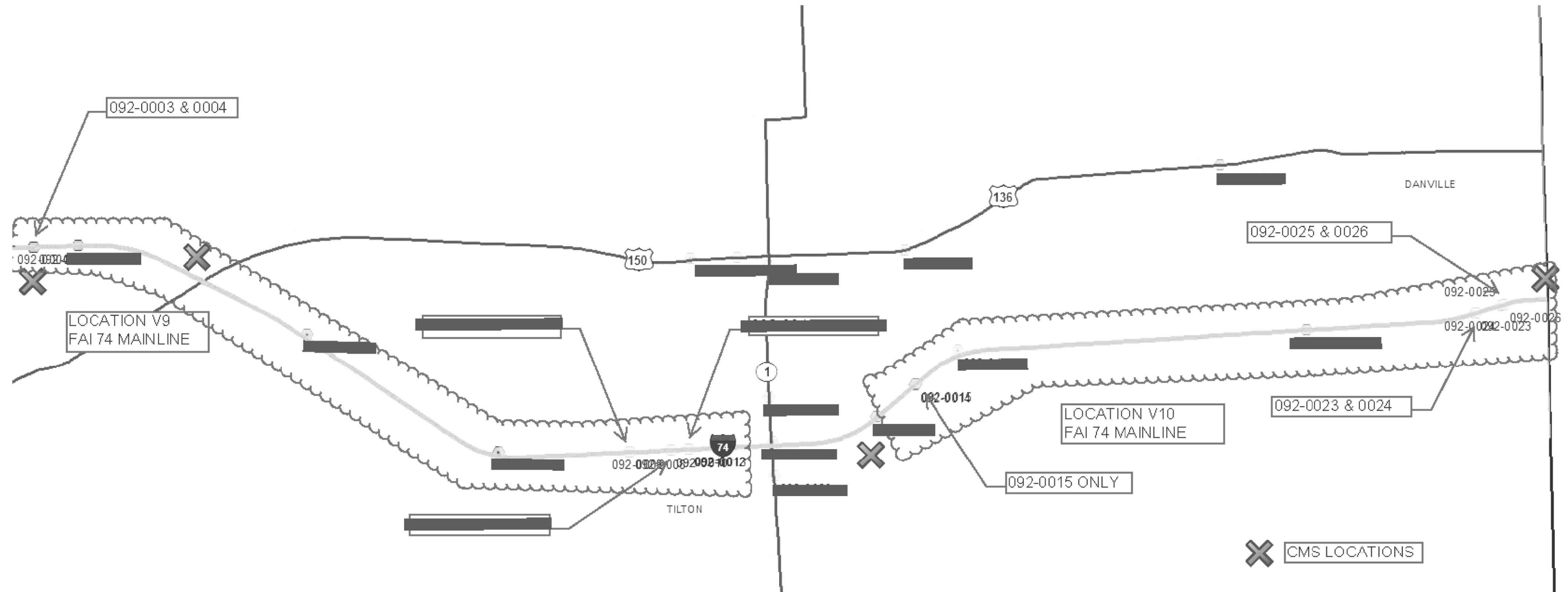
**STATE OF ILLINOIS**  
**DEPARTMENT OF TRANSPORTATION**

**EDGAR COUNTY LOCATION MAP**

SCALE: \_\_\_\_\_ SHEET 4 OF 9 SHEETS STA. \_\_\_\_\_ TO STA. \_\_\_\_\_

F.A. RTE.	SECTION	COUNTY	TOTAL SHEETS	SHEET NO.
VAR.	FY23 BRIDGE DECK SEALING	VARIOUS	24	6
			CONTRACT NO. 70G25	
ILLINOIS FED. AID PROJECT				





MODEL: D:\default  
 FILE: MainE: p:\bridge-cw-bentley.com\FWIDOT\Documents\DOT\_Offices\District\_5\Projects\DS70G25\CAD\data\hydraulics\DS70G25-PlanMap.dgn

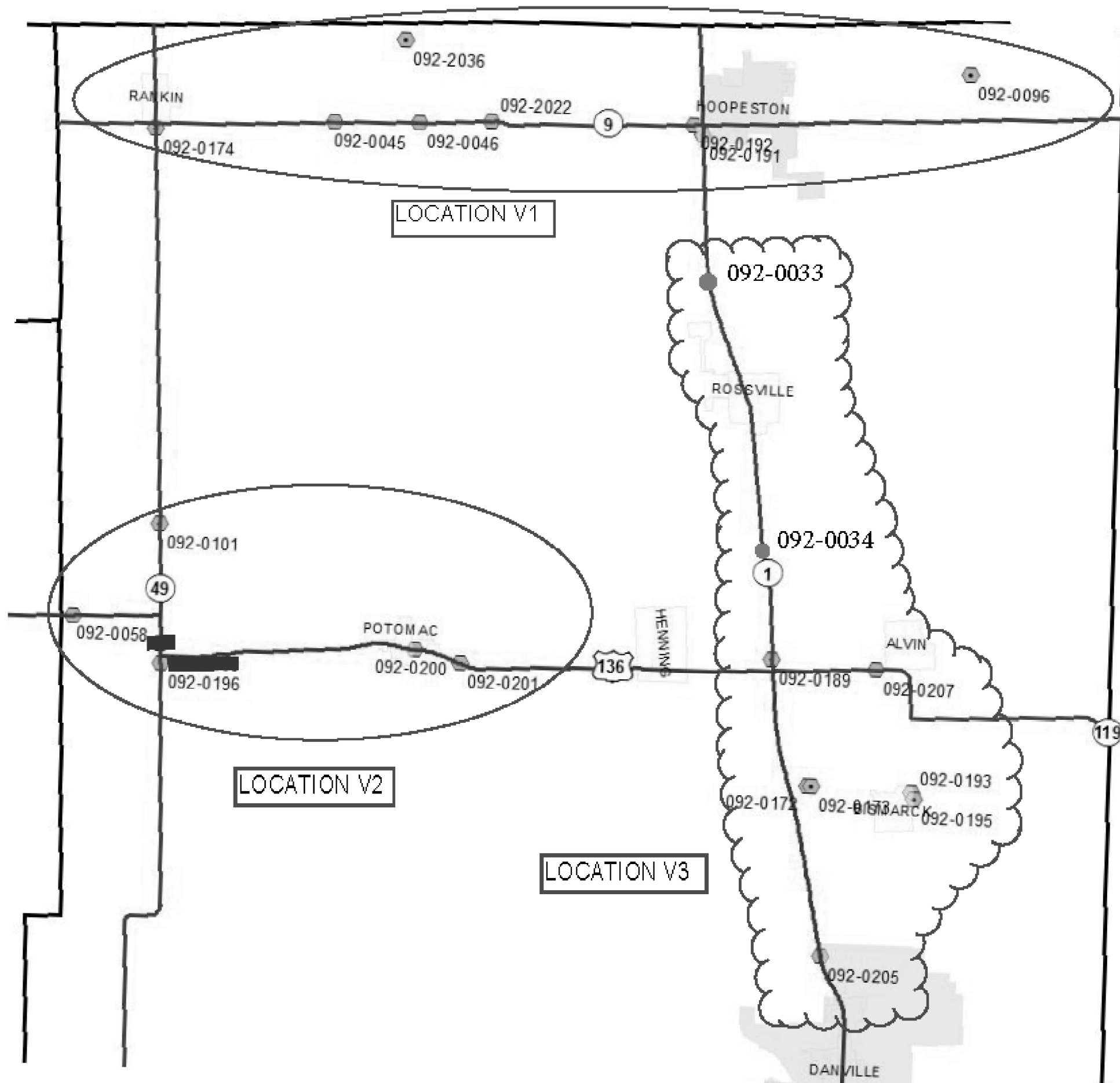
USER NAME = Timothy.Brandenburg	DESIGNED - TJB	REVISED - _____
DRAWN - _____	REVISOR - _____	REVISED - _____
PLOT SCALE = 40,0000' / in.	CHECKED - _____	REVISED - _____
PLOT DATE = 5/31/2022	DATE - 5/24/2022	REVISED - _____

**STATE OF ILLINOIS**  
**DEPARTMENT OF TRANSPORTATION**

**VERMILION COUNTY LOCATION MAP**

SCALE: \_\_\_\_\_ SHEET 5 OF 9 SHEETS STA. \_\_\_\_\_ TO STA. \_\_\_\_\_

F.A. RTE.	SECTION	COUNTY	TOTAL SHEETS	SHEET NO.
VAR.	FY23 BRIDGE DECK SEALING	VARIOUS	24	7
			CONTRACT NO. 70G25	
ILLINOIS FED. AID PROJECT				



MODEL: \\MODELS\MAPS  
 FILE NAME: \\pub\pub\paw\beefay.com\PIV\DOT\Documents\DOT\Office\Dir\dr: S:\Project\70G25\CADD\DATA\Hydraulic\70G25-ht-naps.dgn

USER NAME = brandenburgj	DESIGNED - TJB	REVISED - _____
DRAWN - _____	REVISIONS - _____	REVISED - _____
PLOT SCALE = 40,0000 * / in.	CHECKED - _____	REVISED - _____
PLOT DATE = 5/25/2022	DATE - 5/24/2022	REVISED - _____

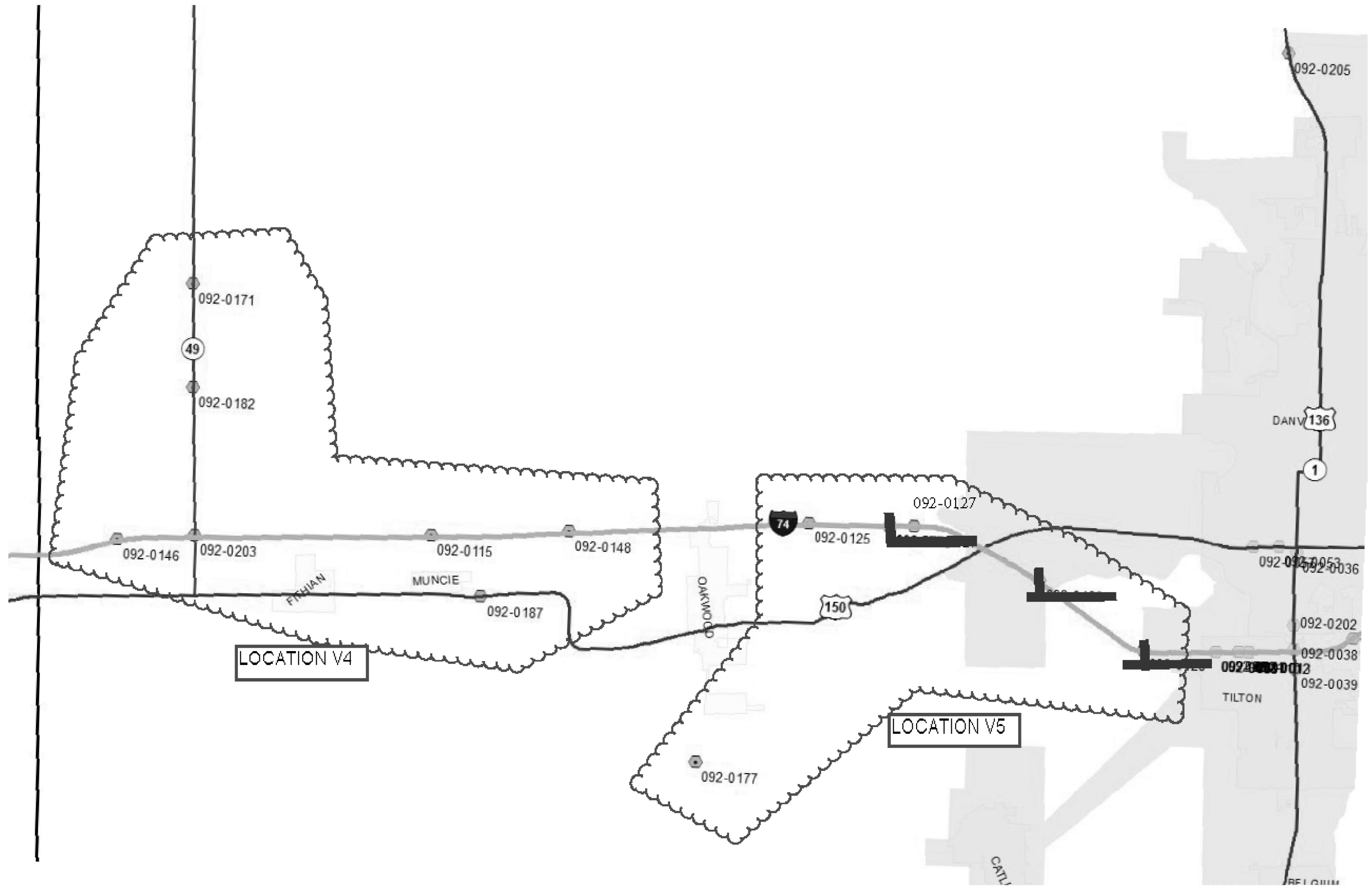
**STATE OF ILLINOIS  
DEPARTMENT OF TRANSPORTATION**

**VERMILION COUNTY LOCATION MAP**

SCALE: \_\_\_\_\_ SHEET 6 OF 9 SHEETS STA. \_\_\_\_\_ TO STA. \_\_\_\_\_

F.A. RTE.	SECTION	COUNTY	TOTAL SHEETS	SHEET NO.
VAR.	FY23 BRIDGE DECK SEALING	VARIOUS	24	8
			CONTRACT NO. 70G25	
ILLINOIS FED. AID PROJECT				

MODEL: \\MODELS\MAPS  
 FILE NAME: \\pub\pub\paw\brandenburg\com\PIV\DOT\Documents\DOT Office\Dir\dir: S\Project\0570G25\CADD\DATA\Hydraulic\0570G25-PIV\map5.dwg



LOCATION V4

LOCATION V5

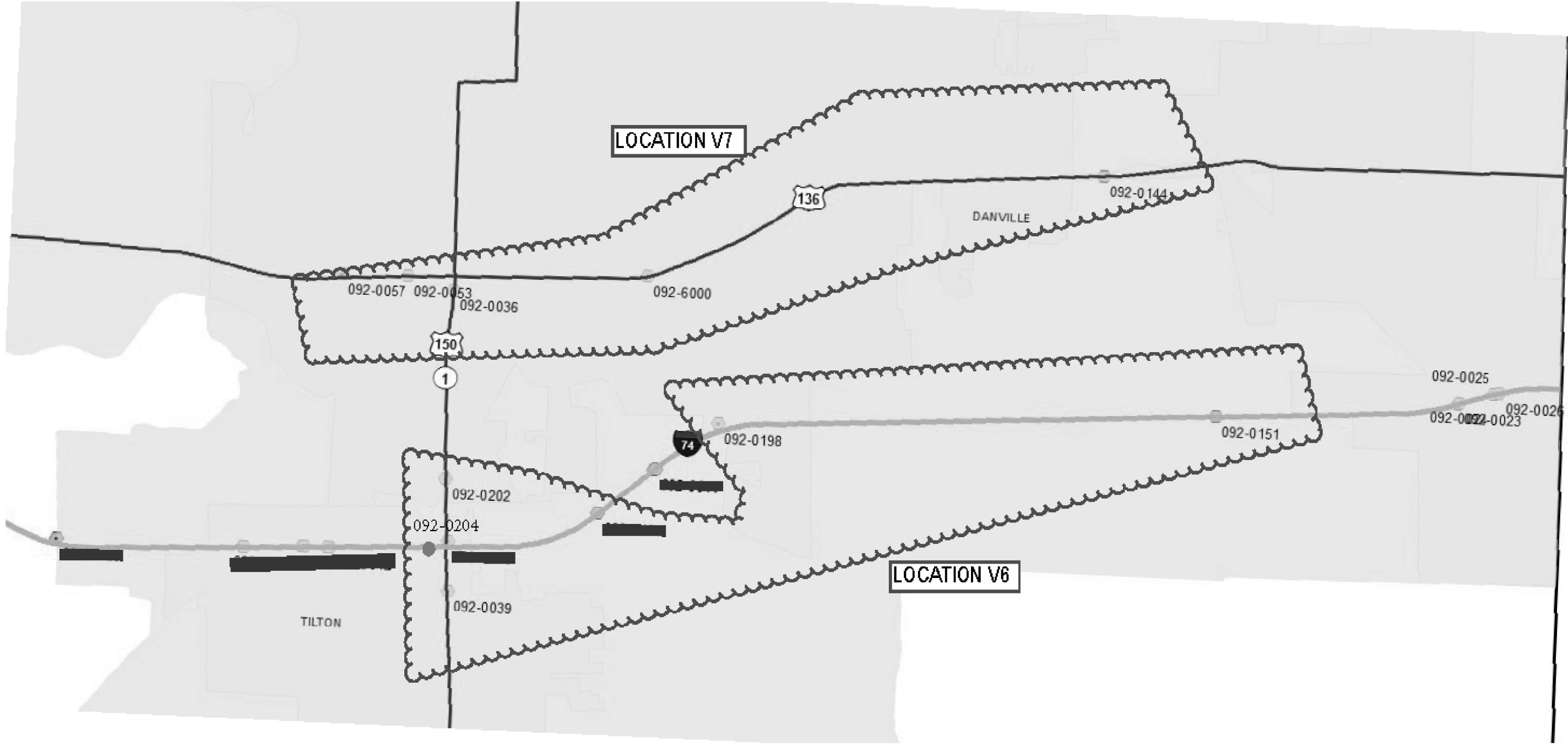
USER NAME = brandenburgj	DESIGNED - TJB	REVISED - _____
DRAWN - _____	REVISOR - _____	REVISED - _____
PLOT SCALE = 40,0000 * / in.	CHECKED - _____	REVISED - _____
PLOT DATE = 5/25/2022	DATE - 5/24/2022	REVISED - _____

**STATE OF ILLINOIS  
 DEPARTMENT OF TRANSPORTATION**

**VERMILION COUNTY LOCATION MAP**

SCALE: \_\_\_\_\_ SHEET 7 OF 9 SHEETS STA. \_\_\_\_\_ TO STA. \_\_\_\_\_

F.A. RTE.	SECTION	COUNTY	TOTAL SHEETS	SHEET NO.
VAR.	FY23 BRIDGE DECK SEALING	VARIOUS	24	9
			CONTRACT NO. 70G25	
ILLINOIS FED. AID PROJECT				



MODEL: \\MODEL\MAME  
 FILE NAME: \\PUB\c:\paw\beefay.com\PIV\DOT\Documents\DOT Office\Dir\dir: S:\Project\0570G25\CADD\DATA\Hydraulic\0570G25-ht-nmapr.dgn

USER NAME = brandenburgj	DESIGNED - TJB	REVISED - _____
	DRAWN - _____	REVISED - _____
PLOT SCALE = 40,0000 * / in.	CHECKED - _____	REVISED - _____
PLOT DATE = 5/25/2022	DATE - 5/24/2022	REVISED - _____

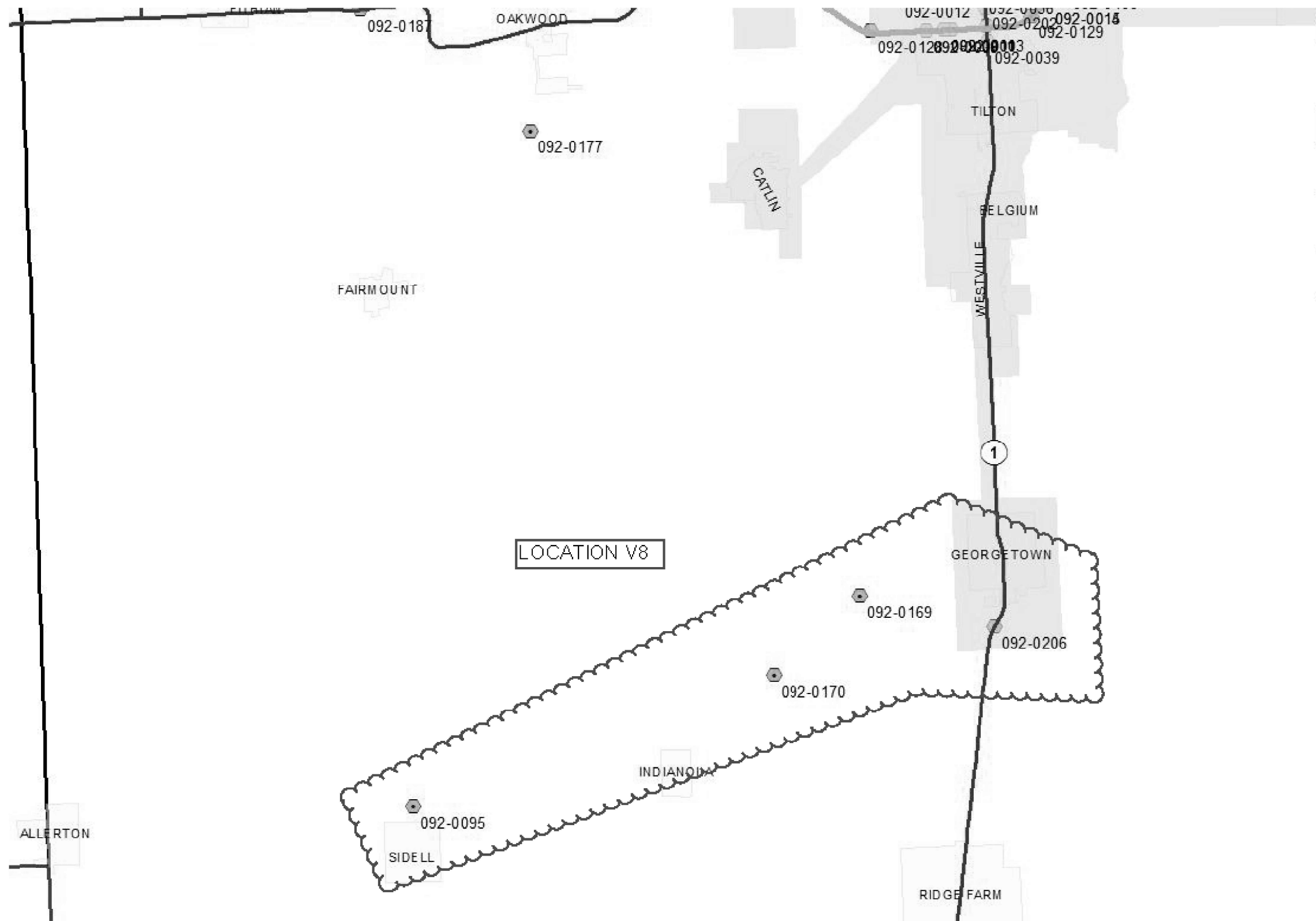
**STATE OF ILLINOIS  
DEPARTMENT OF TRANSPORTATION**

**VERMILION COUNTY LOCATION MAP**

SCALE: \_\_\_\_\_ SHEET 8 OF 9 SHEETS STA. \_\_\_\_\_ TO STA. \_\_\_\_\_

F.A. RTE.	SECTION	COUNTY	TOTAL SHEETS	SHEET NO.
VAR.	FY23 BRIDGE DECK SEALING	VARIOUS	24	10
			CONTRACT NO. 70G25	
		ILLINOIS	FED. AID PROJECT	





MODEL: \\MODEL\MAPS  
 FILE NAME: \\P:\Public\paw\_bentley.com\PIV\DOT\Documents\DOT Office\Dir\dir: S:\Project\ID570G25\CADD\DATA\Hydraulic\ID570G25-sh-naps.dgn

USER NAME = brandenburgj	DESIGNED - TJB	REVISED - _____
DRAWN - _____	REVISIONS - _____	REVISIONS - _____
PLOT SCALE = 40,0000 * / in.	CHECKED - _____	REVISIONS - _____
PLOT DATE = 5/25/2022	DATE - 5/24/2022	REVISIONS - _____

**STATE OF ILLINOIS  
DEPARTMENT OF TRANSPORTATION**

**VERMILION COUNTY LOCATION MAP**

SCALE: \_\_\_\_\_ SHEET 9 OF 9 SHEETS STA. \_\_\_\_\_ TO STA. \_\_\_\_\_

F.A. RTE.	SECTION	COUNTY	TOTAL SHEETS	SHEET NO.
VAR.	FY23 BRIDGE DECK SEALING	VERMILION	24	11
			CONTRACT NO. 70G25	
ILLINOIS FED. AID PROJECT				

LOCATION OF WORK:			VARIOUS ROUTES									
			SECTION FY2023 BRIDGE DECK SEALING									
			INTERSTATE, MULTI-LANE AND TWO-LANE HIGHWAYS									
FUNDING BREAKOUT:			90% / 10%	80% / 20%	80% / 20%	90% / 10%	80% / 20%	90% / 10%	80% / 20%	90% / 10%	80% / 20%	
			FED./STATE	FED./STATE	FED./STATE	FED./STATE	FED./STATE	FED./STATE	FED./STATE	FED./STATE	FED./STATE	
			NHPP	HWY-INF-BFP-S	HWY-INF-BFP-S	NHPP	HWY-INF-BFP-S	NHPP	HWY-INF-BFP-S	NHPP	STP-STWD-FLEX-S	
			BRIDGE PRESERVATION									
CONSTRUCTION TYPE CODE:			0047									
			DOUGLAS COUNTY			EDGAR COUNTY			VERMILION COUNTY			
			RURAL			RURAL		URBAN	RURAL		URBAN	
			INTERSTATE NON-MPO	NON- INTERSTATE NON-MPO	NON-INTERSTATE NON-MPO		INTERSTATE NON-MPO	NON- INTERSTATE NON-MPO	INTERSTATE MPO	NON-INTERSTATE MPO		
CODE NO	ITEM	UNIT	TOTAL QUANTITY	QUANTITY	QUANTITY	QUANTITY	QUANTITY	QUANTITY	QUANTITY	QUANTITY	QUANTITY	
67100100	MOBILIZATION	L SUM	1.0	0.1	0.2	0.1	0.0	0.1	0.1	0.1	0.3	
70100420	TRAFFIC CONTROL AND PROTECTION, STANDARD 701411	EACH	13.0	4.0	0.0	0.0	0.0	2.0	0.0	3.0	4.0	
70100450	TRAFFIC CONTROL AND PROTECTION, STANDARD 701201	L SUM	1.0	0.0	0.3	0.1	0.1	0.0	0.4	0.0	0.1	
70102630	TRAFFIC CONTROL AND PROTECTION, STANDARD 701601	L SUM	1.0	0.0	0.0	0.0	0.0	0.0	0.0	0.0	1.0	
70107025	CHANGEABLE MESSAGE SIGN	CAL DA	56.0	28.0	0.0	0.0	0.0	14.0	0.0	14.0	0.0	
X5870015	BRIDGE DECK CONCRETE SEALER	SQ FT	1,123,778.0	120,054.0	270,685.0	54,608.0	14,311.0	33,956.0	231,949.0	102,141.0	296,074.0	
	NO SPECIALTY ITEMS											

MODEL: \\MODEL\MAME  
 FILE: \\MAILS\_P\pub\lca\paw\_beaufy.com\FW\DOT\Documents\DOT\_Offices\Dir\dir: S:\Project\0570225\CAD\DATA\HYD\CALLES\0570225-ph-ecg.dgn

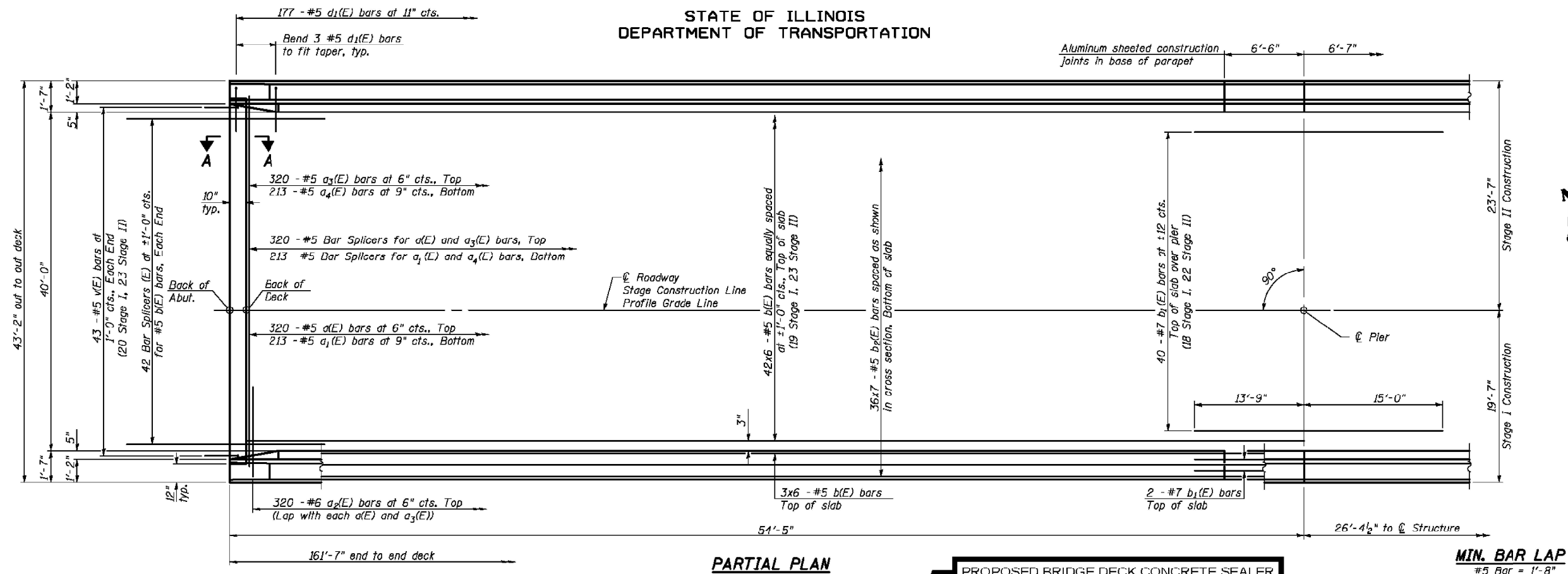
USER NAME = Timothy,Brandenburg	DESIGNED - TJB	REVISED - TJB
	DRAWN - _____	REVISED - _____
PLOT SCALE = 40,0000 * / in.	CHECKED - _____	REVISED - _____
PLOT DATE = 12/14/2022	DATE - 5/24/2022	REVISED - 12/14/2022

**STATE OF ILLINOIS  
DEPARTMENT OF TRANSPORTATION**

SUMMARY OF QUANTITIES			
SCALE: _____	SHEET 1	OF 1	SHEETS
STA. _____	TO STA. _____		

F.A. RTE.	SECTION	COUNTY	TOTAL SHEETS	SHEET NO.
VAR.	FY23 BRIDGE DECK SEALING	VARIOUS	24	12
			CONTRACT NO. 70G25	
ILLINOIS FED. AID PROJECT				

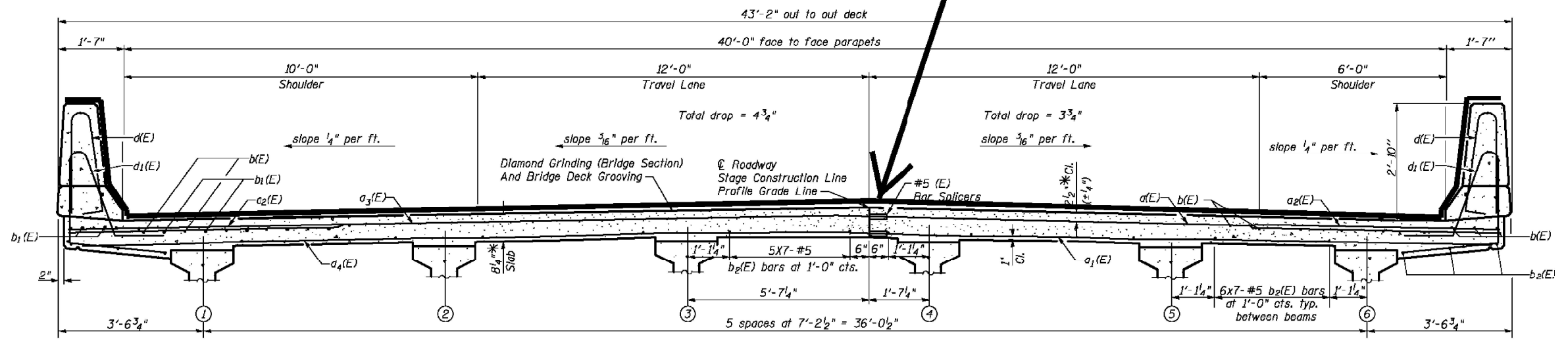
STATE OF ILLINOIS  
DEPARTMENT OF TRANSPORTATION



PARTIAL PLAN

PROPOSED BRIDGE DECK CONCRETE SEALER

MIN. BAR LAP  
#5 Bar = 1'-8"



TYPICAL SECTION; FOUR-LANE WITH PARAPET; DUAL STRUCTURES

CROSS SECTION  
(Looking Upstation Westbound)  
(Looking Downstation Eastbound)

SUPERSTRUCTURE  
I-74 OVER LITTLE KICKAPOO CREEK  
STRUCTURE NO. 057-0120  
AND 057-0121

STRAND ASSOCIATES, INC.

DESIGNED	RRD
CHECKED	AJS
DRAWN	KAS
CHECKED	JAR

Notes:  
See Sheet 12 of 27 for superstructure details and Bill of Material.  
Bars indicated thus 20 x 3-#5 etc. indicates 20 lines of bars with 3 lengths per line.  
See Sheet 12 of 27 for parapet reinforcement.  
See Sheet 27 of 27 for bar splicers details.  
See Sheet 11 of 27 for diaphragm details.

\* Prior to grinding

SHEET NO. 10 27 SHEETS	F.A.I. RTE. 74	SECTION (57-21B)BR	COUNTY MCLEAN	TOTAL SHEETS 61	SHEET NO. 22
	SUPERSTRUCTURE DETAILS (1 OF 3)			CONTRACT NO. 70641	
FED. ROAD DIST. NO. 7 ILLINOIS FED. AID PROJECT					

MODEL: I:\MODEL\MKMS FILE: MKMS\_Plan\SubC-Box-bead.dwg; P:\VDDOT\Documents\DOT Office\Drawings\Project\057025\CADD\Drawings\057025-Plan\bead.dwg

USER NAME = brandenburgtj	DESIGNED - TJB	REVISED -
PLOT SCALE = 40,0000 */ in.	CHECKED -	REVISED -
PLOT DATE = 5/25/2022	DATE - 5/24/2022	REVISED -

STATE OF ILLINOIS  
DEPARTMENT OF TRANSPORTATION

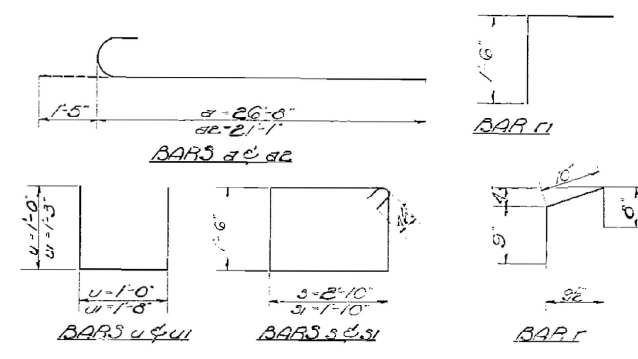
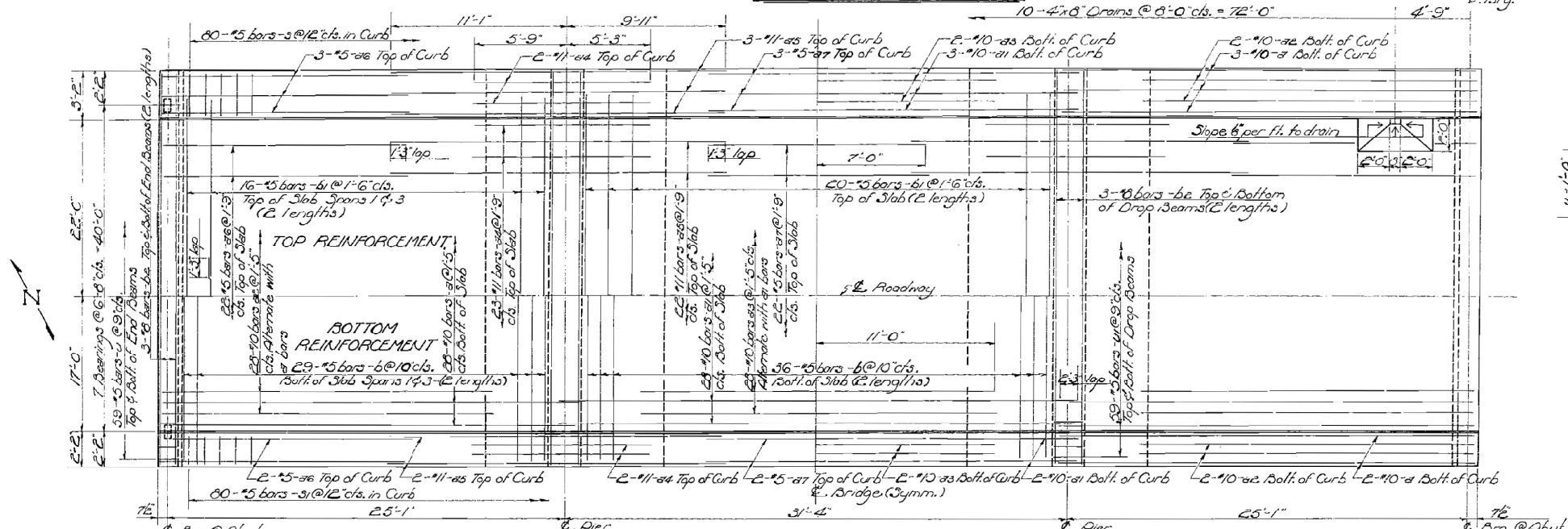
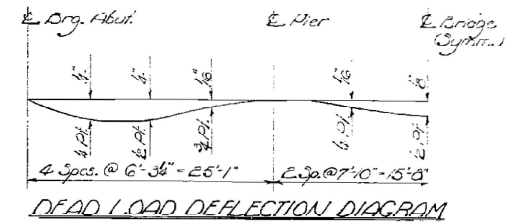
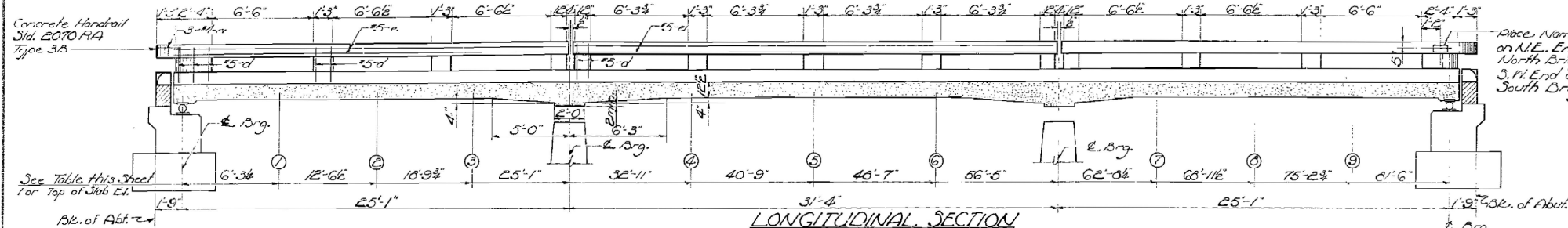
TYPICAL SECTIONS

SCALE: \_\_\_\_\_ SHEET 1 OF 5 SHEETS STA. \_\_\_\_\_ TO STA. \_\_\_\_\_

F.A.I. RTE. VAR.	SECTION FY23 BRIDGE DECK SEALING	COUNTY VARIOUS	TOTAL SHEETS 24	SHEET NO. 13
ILLINOIS FED. AID PROJECT			CONTRACT NO. 70G25	

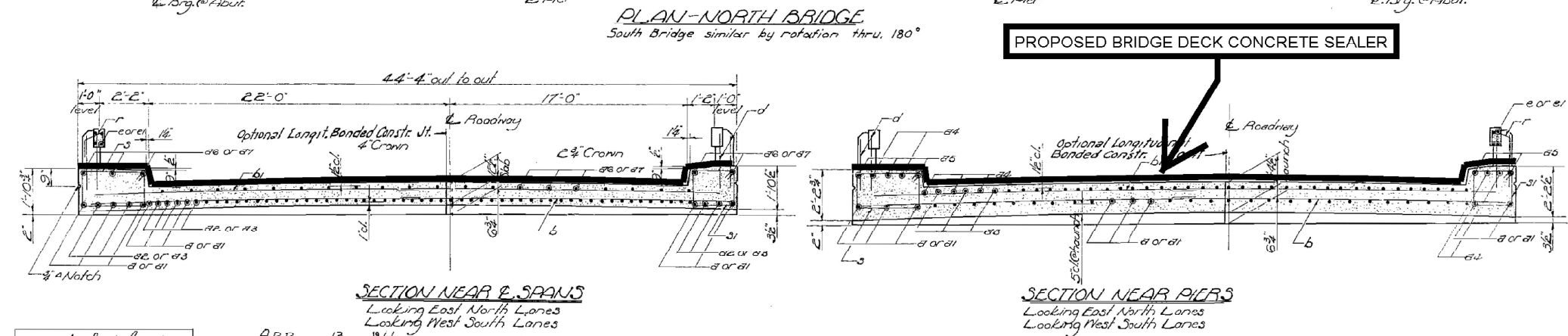
STATE OF ILLINOIS  
DEPARTMENT OF PUBLIC WORKS & BUILDINGS  
DIVISION OF HIGHWAYS

PROJECT NO.	SECTION	COUNTY	TOTAL SHEETS	SHEET NO.	SHEET NO.
74	57-17B	MCLEAN	19	6	8 SHEETS



BILL OF MATERIAL - BRIDGES

Bar	No.	Size	Length	Splice
#1	132	#11	24'-5"	
#1	66	#10	33'-6"	
#2	128	#10	22'-6"	
#3	62	#10	22'-0"	
#4	108	#11	11'-0"	
#5	108	#11	21'-0"	
#6	100	#5	15'-9"	
#7	54	#5	14'-0"	
#8	376	#5	22'-3"	
#9	208	#5	21'-6"	
#10	96	#8	23'-0"	
#11	160	#5	9'-5"	
#12	160	#5	7'-5"	
#13	472	#5	3'-0"	
#14	472	#5	4'-2"	
#15	216	#5	2'-9"	
#16	32	#5	25'-6"	
#17	16	#5	31'-0"	
#18	112	#4	2'-3"	
#19	24	#4	3'-0"	
Class A Concrete		Cu. Yds.	334.1	
Handrail Concrete		Cu. Yds.	2.0	
Reinforcement Bars		Lbs.	32,830	
Structural Steel		Lbs.	20,040	
Name Plates		Each	2	



TYPICAL SECTION; FOUR-LANE WITH CURB; DUAL STRUCTURES

Location	E. Brg. Abut. (1)	(2)	(3)	E. Pier (1)	(2)	(3)	E. Pier (4)	(5)	(6)	E. Pier (7)	(8)	(9)	E. Brg. Abut.
Theoretical Elevation	755.75	755.78	755.81	755.85	755.88	755.93	755.97	756.02	756.07	756.10	756.14	756.18	756.22
Theoretical El. + 10' Defl.	755.75	755.80	755.83	755.86	755.88	755.93	755.98	756.02	756.07	756.11	756.16	756.20	756.22

DESIGNED: Joseph W. Lomic

CHECKED: C. W. Hink

DRAWN: R. W. L. nil jacob

CHECKED: C. W. H.

APR 13 1961

EXAMINED: H. E. Bannerman

PASSED: E. H. Bannerman

APPROVED: R. R. Bantlinger

SUPERSTRUCTURE

F.N.I. RT. 74 - SEC. 57-17B

MCLEAN COUNTY

STA. 1512+64

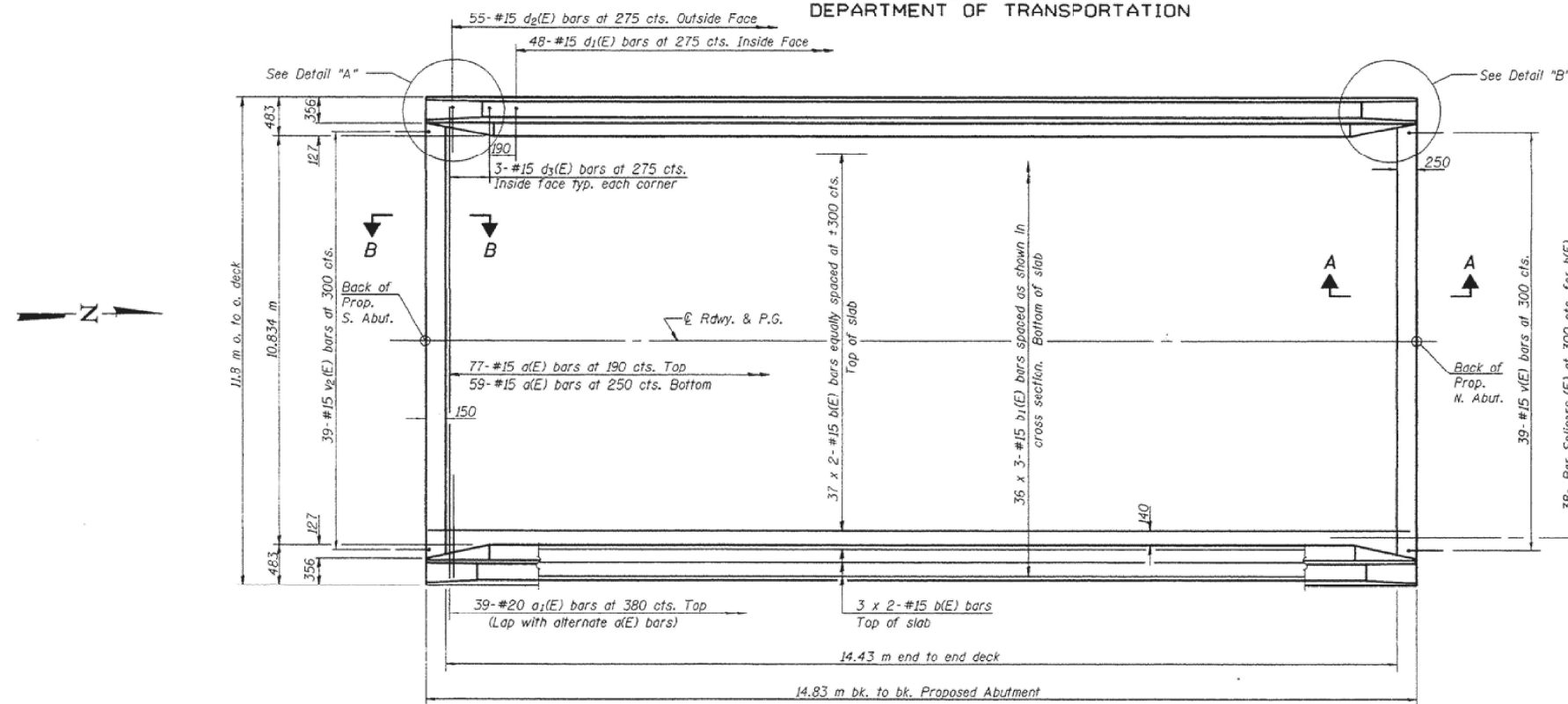
Add Long. Bonded Concrete Joint. R. D. 12/12/20.

MODEL: I:\MODELS\MAME  
FILE NAME: p:\pub\sc-pw-beadefy.com\PIV\DOT\Documents\DOT Office\Drawings\Project\70225\CADD\DATA\Hydraulic\70225-11-drawings.com

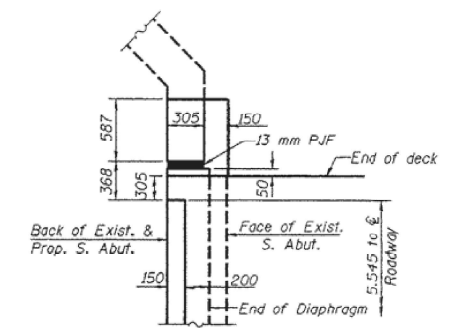


STATE OF ILLINOIS  
DEPARTMENT OF TRANSPORTATION

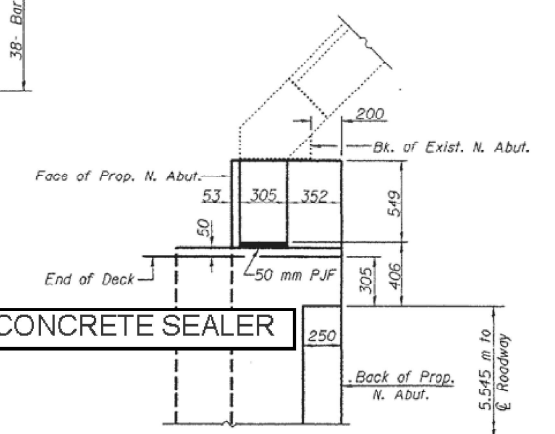
PROJECT NO.	SECTION	COUNTY	SHEET NO.	TOTAL SHEETS
			11	13
SHEET NO. 3				
13 SHEET				
90948				



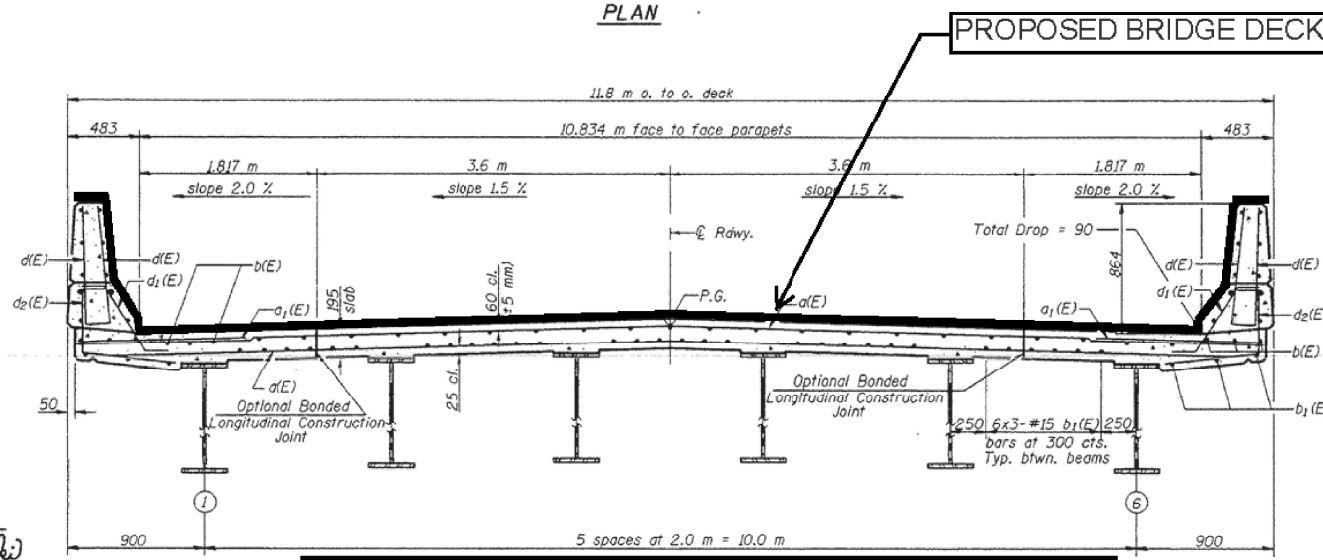
PLAN



DETAIL "A"  
Parapet and Approach not shown.



DETAIL "B"  
Parapet and Approach not shown.



TYPICAL SECTION; TWO-LANE TWO-WAY WITH PARAPET

CROSS SECTION  
(Looking North)

MIN. BAR LAPS  
#15 bars = 640

Notes: See Sheet 4 of 13 for superstructure details and Bill of Material.  
Reinforcement bars designated (E) shall be epoxy coated.  
Bars indicated thus 1 x 3-#15 etc. indicates 1 line of bars with 3 lengths per line.  
See Sheet 4 of 13 for parapet reinforcement.  
All dimensions are in millimeters (mm) except as noted.  
See sheet 12 of 13 for bar splicer details.

**SUPERSTRUCTURE**  
**F.A.S. RTE. 1671 SEC. 22BR-1**  
**DOUGLAS COUNTY**  
**STATION 22+618.644**  
**STRUCTURE NO. 021-0011**

DESIGNED Jonas H. Petty  
CHECKED Mark D. Shaffer  
DRAWN R. Sommer  
CHECKED J.D.P./M.D.S.

EXAMINED *Thomas J. Demas*  
PASSED *Ralph E. Arburn*

January 30 2024  
OFFICIAL OF PUBLIC DESIGN  
ENGINEER OF BRIDGES AND STRUCTURES

MODEL: I:\MODELS\MRIF... FILE NAME: ... PROJECT: ...

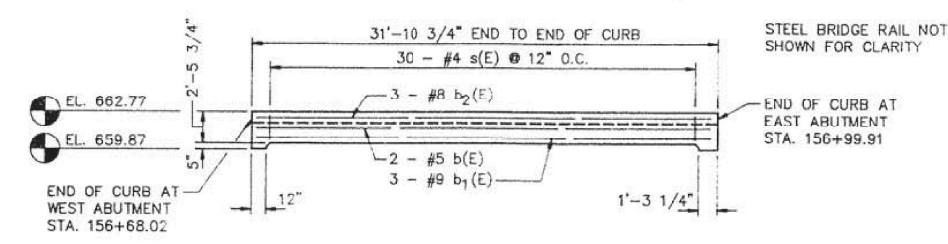
USER NAME = brandenburgjt	DESIGNED - TJB	REVISED -
PLOT SCALE = 40,0000 */ in.	CHECKED -	REVISED -
PLOT DATE = 5/23/2022	DATE - 5/24/2022	REVISED -

STATE OF ILLINOIS  
DEPARTMENT OF TRANSPORTATION

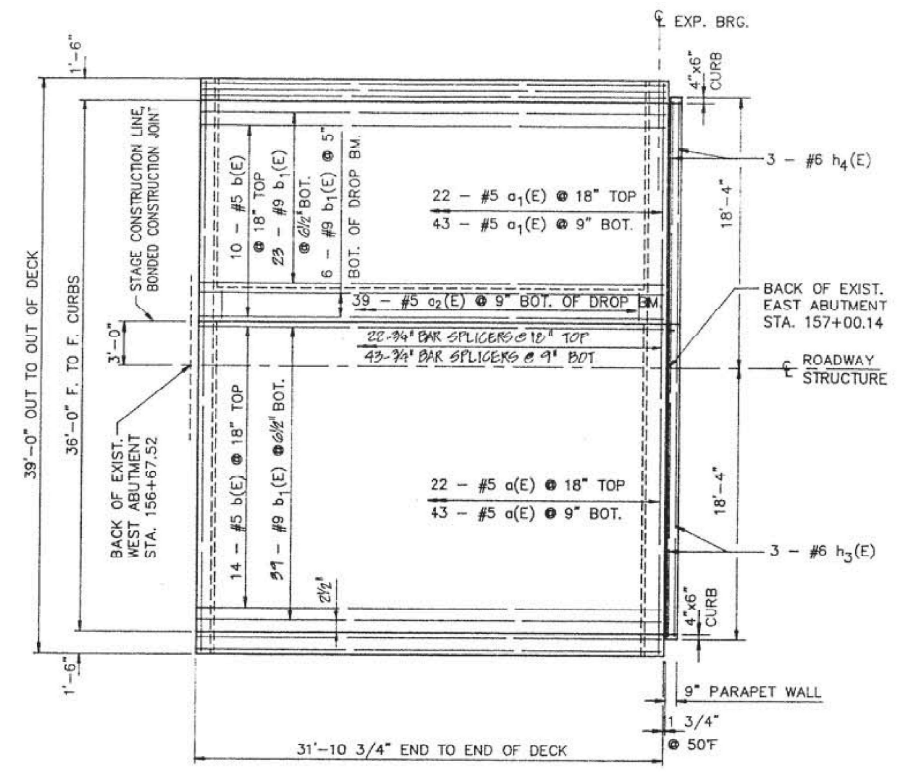
TYPICAL SECTIONS	
SCALE: _____	SHEET 3 OF 5 SHEETS STA. _____ TO STA. _____

F.A. RTE.	SECTION	COUNTY	TOTAL SHEETS	SHEET NO.
VAR.	FY23 BRIDGE DECK SEALING	VARIOUS	24	15
CONTRACT NO. 70G25				
ILLINOIS FED. AID PROJECT				

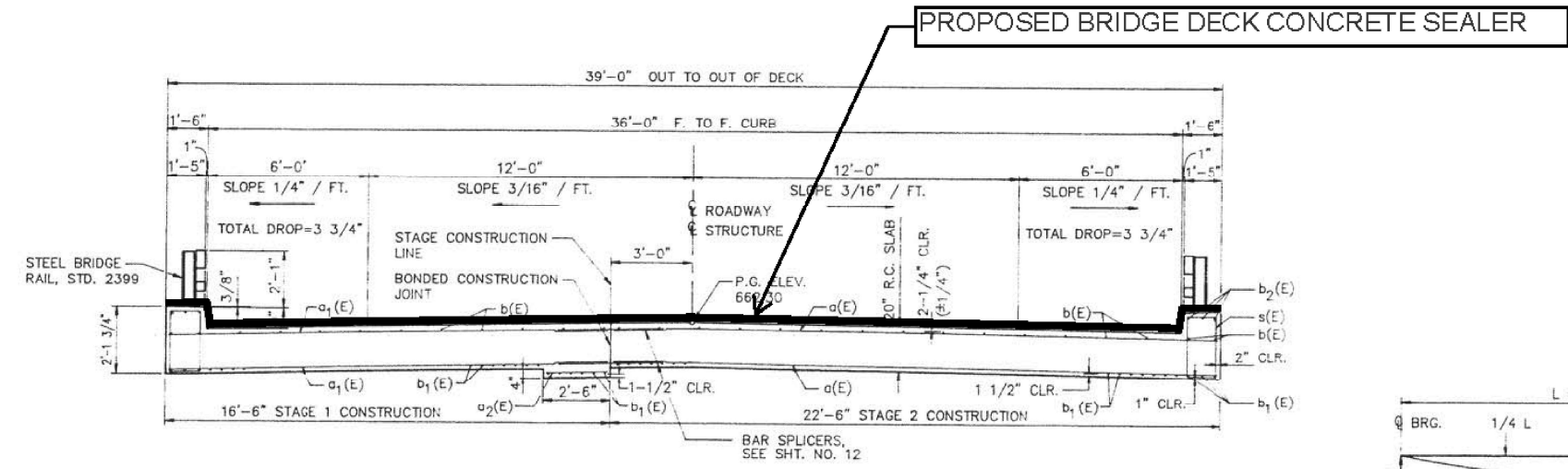
F.A.P. RTE.	SECTION	COUNTY	TOTAL SHEETS	SHEET NO.
79	143 BR-3	DOUGLAS	19	13
F.H.W.A. REG.	ILLINOIS	PROJECT		



**ELEVATION OF CURB BEAM**  
(DIMENSIONS @ OUTSIDE EDGE)

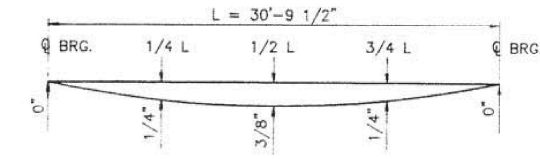


**PLAN**



**CROSS SECTION**  
LOOKING EAST

**TYPICAL SECTION; TWO-LANE TWO-WAY WITH CURB**



**DEAD LOAD DEFLECTION DIAGRAM**

**BILL OF MATERIALS SUPERSTRUCTURE**

BAR	SIZE	NO. REQ'D	LENGTH	SHAPE
a(E)	#5	67	22'-2"	—
a1(E)	#5	67	16'-2"	—
a2(E)	#5	39	2'-2"	—
a3(E)	#6	6	22'-2"	—
a4(E)	#6	6	16'-2"	—
b(E)	#5	28	31'-7"	—
b1(E)	#9	74	31'-7"	—
b2(E)	#8	6	31'-7"	—
b3(E)	#6	3	21'-0"	—
b4(E)	#6	3	15'-0"	—
s(E)	#4	60	6'-5"	□
s1(E)	#4	42	6'-1"	□
s2(E)	#4	42	5'-2"	□

ITEM	UNIT	QUANTITY
PERFORMED JOINT SEAL 2-1/2"	LIN. FT.	39
CLASS "X" CONCRETE SUPERSTRUCTURE	CU. YD.	84.0
PROTECTIVE COAT	SQ. YD.	22
ELASTOMERIC BEARING ASSEMBLY TYPE I	EACH	7
FURNISHING AND ERECTING STRUCTURAL STEEL	POUND	1822
REINFORCEMENT BARS, EPOXY COATED	POUND	18,220

REINFORCEMENT BARS DESIGNATED (E) SHALL BE EPOXY COATED. SEE SHT. NO. 14 FOR BAR BENDING DETAILS.  
SEE SHT. NO. 17 FOR ADDITIONAL PARAPET WALL DETAILS.

**SUPERSTRUCTURE**

U.S. 36 over Dry Fork Creek  
F.A.P. RTE. 79 Section 143 BR-3  
Douglas County  
Sta. 156+84  
Structure Number 021-0017

Drawn **EWING**  
Date **4/30/90**  
REV. **B/90**

Project No.  
**18189002**

**UPCHURCH AND ASSOCIATES**  
engineers architects surveyors  
MATTOON, IL. 235-3177

REV 10-15-90 BY PLC. CHANGED REINFORCEMENT BARS, EPOXY COATED FROM 15,263 TO 18,220 POUNDS

USER NAME = brandenburgjt	DESIGNED - TJB	REVISED -
DRAWN -	REVISOR -	REVISED -
PLOT SCALE = 40,0000' / in.	CHECKED -	REVISED -
PLOT DATE = 5/23/2022	DATE - 5/24/2022	REVISED -

**STATE OF ILLINOIS**  
**DEPARTMENT OF TRANSPORTATION**

**TYPICAL SECTIONS**

SCALE: \_\_\_\_\_ SHEET 4 OF 5 SHEETS STA. \_\_\_\_\_ TO STA. \_\_\_\_\_

F.A. RTE.	SECTION	COUNTY	TOTAL SHEETS	SHEET NO.
VAR.	FY23 BRIDGE DECK SEALING	VARIOUS	24	16
			CONTRACT NO. 70G25	
ILLINOIS FED. AID PROJECT				

MODEL: I:\MODEL\MATTS... FILE: MATTS... PROJECT: I:\PROJECTS\70G25\... DRAWING: I:\DRAWINGS\70G25-13-DR-001.DWG



DOUGLAS COUNTY STRUCTURES SCHEDULE OF QUANTITIES																																									
ACTUAL MEASUREMENTS																																									
SN	ROUTE CARRIED	FEATURE CROSSED	DECK			APPROACH SLABS						PARAPETS (HUB, FACE & TOP)				TYPE B CURB (FACE & TOP)			TOTAL (SQ FT)	RURAL	URBAN	INTERSTATE MPO	INTERSTATE NON-MPO	NON-INTERSTATE MPO	NON-INTERSTATE NON-MPO																
			LENGTH (E - E)	WIDTH (F-F)	AREA (SQ FT)	LENGTH (FT)	DIMENSIONS INSIDE PARAPET / CURB		DIMENSIONS BEYOND PARAPET / CURB		AREA (SQ FT)	HEIGHT	LENGTH (FT)		AREA (SQ FT)	HEIGHT	LENGTH	AREA (SQ FT)																							
							LENGTH	WIDTH	LENGTH	WIDTH			3.6 FT TYPICAL	ALONG DECK												ALONG APPR.	9 INCH TYPICAL	ALONG APPR.													
021-0001	I-57 (NB)	CNRL RR/ BIKE PATH	150.4	40.1	6029.8	29.5	11.5	40.1	18.0	43.3	2483.7	4.15	150.4	11.5	1439.0	0.75	5.0	15.0	9968.0	X			X																		
021-0002	I-57 (SB)	CNRL RR/ BIKE PATH	150.4	40.1	6029.8	29.5	11.5	40.1	18.0	43.3	2483.7	4.15	150.4	11.5	1439.0	0.75	5.0	15.0	9968.0	X			X																		
021-0003	I-57 (NB)	DRAINAGE DITCH	108.4	40.7	4410.7	0.0	0.0	40.7	0.0	43.9	0.0	3.32	108.4	10.0	852.4	0.75	0.0	0.0	5264.0	X			X																		
021-0004	I-57 (SB)	DRAINAGE DITCH	108.4	40.7	4410.7	0.0	0.0	40.7	0.0	43.9	0.0	3.32	108.4	10.0	852.4	0.75	0.0	0.0	5264.0	X			X																		
021-0005	I-57 (SB)	DRAINAGE DITCH	93.6	40.5	3789.6	0.0	0.0	40.5	0.0	43.0	0.0	0.00	93.6	0.0	507.2	0.75	0.0	0.0	4297.0	X			X																		
021-0006	I-57 (NB)	DRAINAGE DITCH	93.6	40.5	3789.6	0.0	0.0	40.5	0.0	43.0	0.0	0.00	93.6	0.0	507.2	0.75	0.0	0.0	4297.0	X			X																		
021-0007	I-57 (NB)	SCATTERING FORK	109.6	40.5	4437.6	0.0	0.0	40.5	0.0	43.0	0.0	0.00	109.6	0.0	566.1	0.75	0.0	0.0	5004.0	X			X																		
021-0008	I-57 (SB)	SCATTERING FORK	109.6	40.5	4437.6	0.0	0.0	40.5	0.0	43.0	0.0	0.00	109.6	0.0	566.1	0.75	0.0	0.0	5004.0	X			X																		
021-0009	I-57 (NB)	FAP 323(US 36)	164.5	45.3	7450.5	29.5	0.0	45.3	29.5	48.5	2864.4	4.15	164.5	0.0	1365.1	0.75	29.5	88.6	11769.0	X			X																		
021-0010	I-57 (SB)	FAP 323(US 36)	164.5	45.3	7450.5	29.5	0.0	45.3	29.5	48.5	2864.4	4.15	164.5	0.0	1365.1	0.75	29.5	88.6	11769.0	X			X																		
021-0011	US 45(FAS 1671)	HAYES BRANCH	45.6	35.5	1617.7	29.5	0.0	35.5	29.5	38.7	2285.6	4.15	45.6	0.0	378.2	0.75	29.5	88.6	4371.0	X					X																
021-0012	US 45(FAS 1671)	SCATTERING FORK	92.3	32.0	2952.6	49.8	0.0	32.0	49.8	35.2	3505.2	4.15	92.3	0.0	765.8	0.75	5.0	15.0	7239.0	X					X																
021-0017	FAP 323(US 36)	DRY FORK	30.3	36.0	1089.7	20.0	0.0	36.0	20.0	39.0	1560.0	2.25	30.3	0.0	136.2	0.75	5.0	15.0	2801.0	X					X																
021-0018	FAP 323(US 36)	KASKASKIA RIVER	172.3	36.0	6201.7	41.2	0.0	36.0	41.2	39.2	1890.0	4.15	172.3	0.0	1429.8	0.75	15.0	45.0	9567.0	X					X																
021-0020	FAP 323(US 36)	HAYES BRANCH DITCH	80.3	30.0	2408.1	0.0	0.0	30.0	0.0	36.3	0.0	1.00	80.3	0.0	160.5	0.75	3.0	9.0	2578.0	X					X																
021-0024	IL 133 (FAP 749)	I-57	222.9	54.5	12148.1	30.0	0.0	54.5	30.0	57.7	3462.0	3.60	222.9	0.0	1604.9	0.75	30.0	90.0	17305.0	X					X																
021-0026	FAP 749(IL 133)	DRAINAGE DITCH	21.7	39.0	845.1	20.0	0.0	39.0	20.0	42.0	840.0	2.25	21.7	0.0	97.5	0.75	5.0	15.0	1798.0	X					X																
021-0029	IL 130(FAP 808)	EMBARRAS RIVER	339.7	32.0	10869.4	30.0	10.0	32.0	20.0	35.2	2048.0	4.15	339.7	10.0	2985.3	0.75	0.0	0.0	15903.0	X					X																
021-0030	IL 130(FAP 820)	EMBARRAS RIVER	173.2	32.0	5541.4	20.0	0.0	32.0	20.0	35.2	1408.0	4.15	173.2	0.0	1437.3	0.75	0.0	0.0	8387.0	X					X																
021-0031	IL 130(FAP 820)	SCATTERING FORK	125.1	32.0	4002.2	20.0	0.0	32.0	20.0	35.2	1408.0	4.15	125.1	0.0	1038.1	0.75	0.0	0.0	6449.0	X					X																
021-0034	FAS 522(CH 6)	I-57	220.2	26.5	5834.5	0.0	0.0	26.5	0.0	30.0	0.0	3.32	220.2	0.0	1850.7	0.75	0.0	0.0	7686.0	X					X																
021-0037	IR 119	I-57	219.7	26.5	5821.3	0.0	0.0	26.5	0.0	29.7	0.0	3.32	219.7	0.0	1867.3	0.75	0.0	0.0	7689.0	X					X																
021-0041	TR 157 D	I-57	220.7	26.2	5774.9	0.0	0.0	26.2	0.0	29.8	388.8	3.32	220.7	0.0	1465.2	0.75	0.0	0.0	7629.0	X					X																
021-0043	TR 25	I-57	218.7	26.5	5794.8	0.0	0.0	26.5	0.0	30.0	388.8	3.32	218.7	0.0	1452.0	0.75	0.0	0.0	7636.0	X					X																
021-0044	TR 49	I-57	219.5	28.5	6254.9	0.0	0.0	28.5	0.0	32.0	388.8	3.32	219.5	0.0	1457.3	0.75	0.0	0.0	8101.0	X					X																
021-0045	TR 83	I-57	226.9	26.5	6012.1	0.0	0.0	26.5	0.0	30.0	408.7	3.32	226.9	0.0	1506.4	0.75	0.0	0.0	7928.0	X					X																
021-0046	TR 108	I-57	241.7	24.0	5800.1	0.0	0.0	24.0	0.0	30.0	408.7	3.32	241.7	0.0	1604.7	0.75	0.0	0.0	7814.0	X					X																
021-0049	IL 130(FAP 820)	DEER CREEK	80.2	32.0	2565.4	20.0	0.0	32.0	20.0	35.2	1408.0	4.15	80.2	0.0	665.4	0.75	15.0	45.0	4684.0	X					X																
021-0050	US 36(FAP 323)	DRAINAGE DITCH	79.7	36.0	2868.1	20.0	0.0	36.0	20.0	39.2	1568.0	4.15	79.7	0.0	661.3	0.75	5.0	15.0	5113.0	X					X																
021-0051	US 36(FAP 323)	LAKE FORK RIVER	180.9	36.0	6511.3	20.0	0.0	36.0	20.0	39.2	1568.0	4.15	180.9	0.0	1501.2	0.75	5.0	15.0	9596.0	X					X																
021-0052	FAP 323(US 36)	BRUSHY FORK RIVER	139.7	36.0	5028.1	20.0	0.0	36.0	20.0	39.2	1568.0	4.15	139.7	0.0	1159.3	0.75	20.0	60.0	7816.0	X					X																
021-0053	FAP 749(IL 133)	SCATTERING FORK	53.7	32.0	1717.4	20.0	0.0	32.0	20.0	35.2	1408.0	4.15	53.7	0.0	445.5	0.75	5.0	15.0	3586.0	X					X																
021-0054	FAP 749(IL 133)	UNION DIST #6	42.2	32.0	1349.4	20.0	0.0	32.0	20.0	35.2	1315.1	4.15	42.2	0.0	350.0	0.75	5.0	15.0	3030.0	X					X																
021-0055	FAP 749(IL 133)	IRIB SCATTERING FORK	49.7	32.0	1589.4	20.0	0.0	32.0	20.0	35.2	1408.0	4.15	49.7	0.0	412.3	0.75	5.0	15.0	3425.0	X					X																
021-0056	FAP 749(IL 133)	DRAINAGE DITCH	28.7	32.0	917.4	20.0	0.0	32.0	20.0	35.0	1400.0	2.25	28.7	0.0	129.0	0.75	5.0	15.0	2462.0	X					X																
021-0057	FAP 323(US 36)	EMBARRAS RIVER	192.7	36.0	6936.1	20.0	0.0	36.0	20.0	39.2	1568.0	4.15	192.7	0.0	1599.2	0.75	20.0	60.0	10164.0	X					X																
021-0059	FAP 749(IL 133)	KASKASKIA RIVER	327.7	40.0	13106.8	30.0	0.0	40.0	30.0	43.2	2592.0	4.15	327.7	0.0	2719.7	0.75	30.0	90.0	18509.0	X					X																
021-0060	US RTE 45	U.P. & CSX RR	189.7	32.0	6069.4	30.0	0.0	32.0	30.0	35.2	2112.0	4.15	189.7	0.0	1574.3	0.75	30.0	90.0	13332.0	X					X																
021-0061	US RTE 45	U.P. RAILROAD	199.7	32.0	6389.4	30.0	0.0	32.0	30.0	35.2	2112.0	4.15	199.7	0.0	1657.3	0.75	30.0	90.0	13332.0	X					X																
021-0062	US 45(FAS 1671)	US 36(FAP 323)	101.7	32.0	3253.4	30.0	30.0	32.0	0.0	36.0	1920.0	2.25	101.7	30.0	727.5	0.75	0.0	0.0	5901.0	X					X																
021-0063	IL 130(FAP 808)	EMBARRAS RIVER	261.7	58.0	15178.6	30.0	30.0	58.0	0.0	58.0	3480.0	9.10	261.7	30.0	5854.9	0.75	0.0	0.0	24514.0	X					X																
021-2008	I-57 (NB)	CSX & UP RR	217.7	39.4	8576.2	29.5	0.0	39.4	29.5	42.6	2516.0	4.15	217.7	0.0	1806.7	0.75	29.5	88.6	12988.0	X			X																		
021-2009	I-57 (SB)	CSX & UP RR	217.7	39.4	8576.2	29.5	0.0	39.4	29.5	42.6	2516.0	4.15	217.7	0.0	1806.7	0.75	29.5	88.6	12988.0	X			X																		
021-2010	I-57 (NB)	HAYES BRANCH	221.9	40.0	8874.8	0.0	0.0	40.0	0.0	42.0	388.8	3.32	221.9	0.0	1473.2	0.75	0.0	0.0	10737.0	X			X																		
021-2011	I-57 (SB)	HAYES BRANCH	221.9	40.0	8874.8	0.0	0.0	40.0	0.0	42.0	388.8	3.32	221.9	0.0	1473.2	0.75	0.0	0.0	10737.0	X			X																		
021-2012	US 36(FAP 323)	STREAM	17.7	39.0	689.1	0.0	0.0	39.0	0.0	40.0	26.7	0.00	17.7	0.0	124.4	0.75	5.0	15.0	856.0	X					X																
021-2018	US 36(FAP 323)	DRAINAGE DITCH	43.9	36.0	1579.3	20.0	0.0	36.0	20.0	38.0	1520.0	2.25	43.9	0.0	197.4	0.75	5.0	15.0	3312.0	X					X																
021-2020	FAP 749(IL 133)	STREAM	19.9	31.8	631.9	20.0	0.0	31.8	20.0	35.0	1400.0	2.25	19.9	0.0	89.4	0.75	5.0	15.0	2137.0	X					X																
021-2022	FAP 323 (US 36)	BRUSHY FORK TRIB	39.2	36.0	1410.1	30.0	0.0	36.0	30.0	39.0	1850.0	2.25	39.2	0.0	176.3	0.75	5.0	15.0	3452.0	X					X																
021-2026	FAP 323 (US 36)	HACKETT CREEK	44.3	40.0	1773.4	30.0	0.0	40.0	30.0	48.0	2520.0	2.25	44.3	0.0	199.5	0.75	30.0	90.0	4583.0	X					X																
NO AS-BUILT CORRECTIONS FROM CONTRACT 70918 IN 2014 OR 70D29 IN 2019																		TOTALS (SQ FT)			390,739	390,739				120,054			270,685												
50	NO. OF STRUCTURES																			50			14		36																

MODEL: I:\MODEL\MAFIS...  
 FILE: MAIFIS...  
 PROJECT: I:\PROJECTS\70G25\...  
 OFFICE: I:\PROJECTS\70G25\...  
 PROJECT: I:\PROJECTS\7



DOUGLAS COUNTY STRUCTURES SCHEDULE OF QUANTITIES																								
TRAFFIC CONTROL & PROTECTION																								
PROSECUTION & PROGRESS																								
SN	ROUTE CARRIED	FEATURE CROSSED	701201	D5 DETAIL 70200000 ROAD CLOSURE	701411	701426 SPECIAL	701601	701427 SPECIAL	LOCATION	SUMMARY	CHANGEABLE MESSAGE SIGN (Calendar Days)	WORKING DAYS	PROSECUTION	RURAL	URBAN	INTERSTATE MPO	INTERSTATE NON-MPO	NON- INTERSTATE MPO	NON- INTERSTATE NON-MPO					
021-0001	I-57 (NB)	CNRL RR/ BIKE PATH			1	1			D1	6 - 701426 SPECIAL; 1 - 701411; 8 SN	4-CMS (2 EB; 2 WB); 7 CALENDAR DAYS PRIOR; 14 DAYS EACH DIRECTION; TOTAL 28 CALENDAR DAYS	2	1 DAY DRIVING LANES NB & SB; 1 DAY PASSING LANES NB & SB	X			X							
021-0002	I-57 (SB)	CNRL RR/ BIKE PATH				1								X				X				X		
021-0003	I-57 (NB)	DRAINAGE DITCH				1								X				X				X		
021-0004	I-57 (SB)	DRAINAGE DITCH				1								X				X				X		
021-0005	I-57 (SB)	DRAINAGE DITCH				INCL.								X				X				X		
021-0006	I-57 (NB)	DRAINAGE DITCH				1								X				X				X		
021-0007	I-57 (NB)	SCATTERING FORK				INCL.								X				X				X		
021-0008	I-57 (SB)	SCATTERING FORK				1								X				X				X		
021-0009	I-57 (NB)	FAP 323(US 36)			1	1								X				X				X		
021-0010	I-57 (SB)	FAP 323(US 36)			1	INCL.								X				X				X		
021-2008	I-57 (NB)	CSX & UP RR			1	INCL.			U2	2 - 701426 SPECIAL; 3 - 701411; 6 SN	2	1 DAY DRIVING LANES NB & SB; 1 DAY PASSING LANES NB & SB	X			X								
021-2009	I-57 (SB)	CSX & UP RR				INCL.							X				X				X			
021-2010	I-57 (NB)	HAYES BRANCH				INCL.							X				X				X			
021-2011	I-57 (SB)	HAYES BRANCH				1			X				X				X							
021-0052	FAP 323(US 36)	BRUSHY FORK RIVER	2						D3	12 - 701201; 7 SN	1.5	2 HRS PER STRUCTURE; 12 HRS	X						X					
021-2022	FAP 323 (US 36)	BRUSHY FORK TRIB	2										X				X						X	
021-0050	US 36(FAP 323)	DRAINAGE DITCH	2										X				X						X	
021-2018	US 36(FAP 323)	DRAINAGE DITCH	2										X				X						X	
021-0057	FAP 323(US 36)	EMBARRAS RIVER	2										X				X						X	
021-2026	FAP 323 (US 36)	HACKETT CREEK	2										X				X						X	
021-0020	FAP 323(US 36)	HAYES BRANCH DITCH	2										X				X						X	
021-2012	US 36(FAP 323)	STREAM	2						D4	12 - 701201; 9 SN	1.5	2 HRS PER STRUCTURE; 14 HRS	X						X					
021-0018	FAP 323(US 36)	KASKASKIA RIVER	2										X				X						X	
021-0017	FAP 323(US 36)	DRY FORK	2										X				X						X	
021-0051	US 36(FAP 323)	LAKE FORK RIVER	2										X				X						X	
021-0062	US 45(FAS 1671)	US 36(FAP 323)	1										X				X						X	
021-0061	US RTE 45	U.P. RAILROAD	INCL.										X				X						X	
021-0060	US RTE 45	U.P. & CSX RR	INCL.										X				X						X	
021-0012	US 45(FAS 1671)	SCATTERING FORK	1										X				X						X	
021-0011	US 45(FAS 1671)	HAYES BRANCH	2										X				X						X	
021-0029	IL 130(FAP 808)	EMBARRAS RIVER	2										D5	12 - 701201; 6 - ROAD CLOSURES; 12 SN	2	2 HRS PER STRUCTURE; 24 HRS	X						X	
021-0030	IL 130(FAP 820)	EMBARRAS RIVER	2						X								X						X	
021-0031	IL 130(FAP 820)	SCATTERING FORK	2						X								X						X	
021-0049	IL 130(FAP 820)	DEER CREEK	2						X								X						X	
021-0063	IL 130(FAP 808)	EMBARRAS RIVER	2						X								X						X	
021-0041	TR 157 D	I-57		1					X								X						X	
021-0037	TR 119	I-57		1					X								X						X	
021-0046	TR 108	I-57		1					X								X						X	
021-0045	TR 83	I-57		1					X								X						X	
021-0044	TR 49	I-57		1					X								X						X	
021-0043	TR 25	I-57		1					X				X						X					
021-0034	FAS 522(CH 6)	I-57	2						X				X						X					
021-2020	FAP 749(IL 133)	STREAM	2						D6	14 - 701201; 8 SN	1	2 HRS PER STRUCTURE; 16 HRS	X						X					
021-0056	FAP 749(IL 133)	DRAINAGE DITCH	2										X				X						X	
021-0054	FAP 749(IL 133)	UNION DIST #6	INCL.										X				X						X	
021-0026	FAP 749(IL 133)	DRAINAGE DITCH	2										X				X						X	
021-0055	FAP 749(IL 133)	TRIB SCATTERING FORK	2										X				X						X	
021-0053	FAP 749(IL 133)	SCATTERING FORK	2										X				X						X	
021-0024	IL 133 (FAP 749)	I-57	2										X				X						X	
021-0059	FAP 749(IL 133)	KASKASKIA RIVER	2										X				X						X	
TC&P SET-UPS and CVS CALENDAR DAYS			50	€	4	8	0	0							28	10								
WORKING DAYS PER STANDARD			6	€	0	4	0	0																

MODEL: I:\MODEL\MAINT FILE: MAINT\_Plan\BUDGET\bea\bea.dgn  
 PROJECT: I:\PROJECTS\70G25\CADD\DATA\Hydro\70G25-Plan\70G25-Plan.dgn

USER NAME = Timothy,Brandenburg	DESIGNED - TJB	REVISED - TJB
PLOT SCALE = 40,0000 * / in.	CHECKED - _____	REVISED - _____
PLOT DATE = 12/14/2022	DATE - 5/24/2022	REVISED - 12/14/2022

**STATE OF ILLINOIS  
DEPARTMENT OF TRANSPORTATION**

**DOUGLAS COUNTY  
SCHEDULE OF QUANTITIES**

SCALE: \_\_\_\_\_ SHEET 2 OF 6 SHEETS STA. \_\_\_\_\_ TO STA. \_\_\_\_\_

F.A. RTE.	SECTION	COUNTY	TOTAL SHEETS	SHEET NO.
VAR.	FY23 BRIDGE DECK SEALING	VARIOUS	24	19
CONTRACT NO. 70G25			ILLINOIS FED. AID PROJECT	

EDGAR COUNTY STRUCTURES SCHEDULE OF QUANTITIES																												
ACTUAL MEASUREMENTS																												
SN	ROUTE CARRIED	FEATURE CROSSED	DECK			APPROACH SLABS						PARAPETS (HUB, FACE & TOP)				TYPE B CURB (FACE & TOP)			TOTAL (SQ FT)	RURAL	URBAN	INTERSTATE MPO	INTERSTATE NON-MPO	NON-INTERSTATE MPO	NON-INTERSTATE NON-MPO			
			LENGTH (E-E)	WIDTH (F-F)	AREA (SQ FT)	LENGTH (FT)	DIMENSIONS INSIDE PARAPET / CURB		DIMENSIONS BEYOND PARAPET / CURB		AREA (SQ FT)	HEIGHT	LENGTH (FT)		AREA (SQ FT)	HEIGHT	LENGTH	AREA (SQ FT)										
							LENGTH	WIDTH	LENGTH	WIDTH			3.6 FT TYPICAL	ALONG DECK												ALONG APPR.	9 INCH TYPICAL	ALONG APPR.
023-0007	US 36(FAP 323)	BROUILLETTS CR	35.7	36.0	1284.1	20.0	0.0	36.0	20.0	39.2	1253.3	4.15	35.7	0.0	296.1	0.75	0.0	0.0	2834.0	X					X			
023-0010	US 36(FAP 323)	CRABAPPLE CREEK	60.7	36.0	2184.1	30.0	0.0	36.0	30.0	39.2	2352.0	4.15	60.7	0.0	503.6	0.75	5.0	15.0	5055.0	X					X			
023-0015	IL 133 (FAP 749)	HICKORY GROVE CREEK	144.7	32.0	4629.4	0.0	0.0	32.0	0.0	32.0	0.0	0.00	144.7	0.0	0.0	0.00	0.0	0.0	4630.0	X					X			
023-0024	IL 1 US 150(FAP 332)	PARIS LAKE	126.2	62.8	7923.5	20.0	0.0	62.8	20.0	66.0	2640.0	4.15	126.2	0.0	1047.2	0.75	15.0	45.0	14310.6		X				X			
023-0026	IL 49(FAP 836)	EAST DONICA CREEK	67.7	32.0	2165.4	20.0	10.0	32.0	10.0	35.2	1344.0	4.15	67.7	10.0	727.7	0.75	0.0	0.0	4238.0	X					X			
023-0027	FAP 323(US 36)	STREAM	60.2	36.0	2166.1	20.0	10.0	36.0	10.0	39.2	1330.0	4.15	60.2	10.0	499.4	0.75	5.0	15.0	4011.0	X					X			
023-0028	FAP 323(US 36)	STREAM	60.2	36.0	2166.1	20.0	10.0	36.0	10.0	39.2	1330.0	4.15	60.2	10.0	499.4	0.75	5.0	15.0	4011.0	X					X			
023-0030	US 36(FAP 323)	LICK RUN	50.7	36.0	1824.1	20.0	0.0	36.0	20.0	39.2	1568.0	4.15	50.7	0.0	420.6	0.75	5.0	15.0	3828.0	X					X			
023-0031	FAP 323(US 36)	BRUSHY CREEK	55.2	36.0	1986.1	20.0	0.0	36.0	20.0	39.2	1330.0	4.15	55.2	0.0	457.9	0.75	0.0	0.0	3775.0	X					X			
023-0032	FAP 323(US 36)	STREAM	61.7	36.0	2220.1	20.0	0.0	36.0	20.0	39.2	1568.0	4.15	61.7	0.0	511.9	0.75	5.0	15.0	4315.0	X					X			
023-0033	US 36(FAP 323)	BROUILLETTS CREEK	96.5	32.0	3088.0	30.0	0.0	32.0	30.0	35.2	2112.0	4.15	96.5	0.0	801.0	0.75	30.0	90.0	6091.0	X					X			
023-0034	IL 133 (FAP 749)	DRAINAGE DITCH #7	69.0	32.0	2208.0	30.0	15.0	32.0	15.0	35.2	2016.0	3.60	69.0	15.0	712.8	0.75	15.0	45.0	4982.0	X					X			
023-2010	IL 49(FAP 836)	TRIB OF BRUSHY FORK	31.7	32.0	1013.4	30.0	0.0	32.0	30.0	34.0	2040.0	1.55	31.7	0.0	98.2	0.75	0.0	0.0	3152.0	X					X			
023-2014	IL 49(FAP 836)	STREAM	41.5	32.0	1327.0	30.0	0.0	32.0	30.0	34.7	2082.0	2.25	41.5	0.0	186.6	0.75	30.0	90.0	3686.0	X					X			
NO AS-BUILT CORRECTIONS FROM CONTRACT 70918 IN 2014 OR 70D29 IN 2019																	TOTALS (SQ FT)			68,919	54,608	14,311					68,919	
14	NO. OF STRUCTURES																	NO. OF STRUCTURES			13	1						14

EDGAR COUNTY STRUCTURES SCHEDULE OF QUANTITIES																							
TRAFFIC CONTROL & PROTECTION														PROSECUTION & PROGRESS				RURAL	URBAN	INTERSTATE MPO	INTERSTATE NON-MPO	NON-INTERSTATE MPO	NON-INTERSTATE NON-MPO
SN	ROUTE CARRIED	FEATURE CROSSED	701201	D5 DETAIL 70200000 ROAD CLOSURE	701411	701426 SPECIAL	701601	701427 SPECIAL	LOCATION	SUMMARY	CHANGEABLE MESSAGE SIGN (Calendar Days)	WORKING DAYS	PROSECUTION										
														701201	701411	701426 SPECIAL	701601						
023-0010	US 36(FAP 323)	CRABAPPLE CREEK	2						E2	12 - 701201; 8 SN	NOT APPLICABLE	1	2 HRS PER STRUCTURE; 10 HRS	X					X				
023-0027	FAP 323(US 36)	STREAM	2											X				X					
023-0028	FAP 323(US 36)	STREAM	2											X				X					
023-0030	US 36(FAP 323)	LICK RUN	2											X				X					
023-0031	FAP 323(US 36)	BRUSHY CREEK	2											X				X					
023-0032	FAP 323(US 36)	STREAM	2											X				X					
023-0007	US 36(FAP 323)	BROUILLETTS CR	2											X				X					
023-0033	US 36(FAP 323)	BROUILLETTS CREEK	2											X				X					
023-0015	IL 133 (FAP 749)	HICKORY GROVE CREEK	2						E1	10 - 701201; 6 SN	NOT APPLICABLE	1	2 HRS PER STRUCTURE; 10 HRS	X					X				
023-0024	IL 1 US 150(FAP 332)	PARIS LAKE	2											X				X					
023-0026	IL 49(FAP 836)	EAST DONICA CREEK	2											X				X					
023-0034	IL 133 (FAP 749)	DRAINAGE DITCH #7	2											X				X					
023-2010	IL 49(FAP 836)	TRIB OF BRUSHY FORK	2											X				X					
023-2014	IL 49(FAP 836)	STREAM	2											X				X					
TC&P SET-UPS and CMS CALENDAR DAYS			22	0	0	0	0	0			0	2											
WORKING DAYS PER STANDARD			2	0	0	0	0	0															

MODEL: I:\MODEL\MMFE  
 FILE: MMFE\_Plan\Subcontract\DOT\Office\Drawings\Project\DOT\Documents\DOT\Office\Drawings\Subcontract\Hydraulic\DOT\70G25-sh-sec-quant-bc.dgn

USER NAME = Timothy.Brandenburg	DESIGNED - TJB	REVISED - TJB
DRAWN - _____	REVISIONS - _____	
PLOT SCALE = 40,0000 * / in.	CHECKED - _____	REVISED - _____
PLOT DATE = 12/14/2022	DATE - 5/24/2022	REVISED - 12/14/2022

**STATE OF ILLINOIS  
DEPARTMENT OF TRANSPORTATION**

<b>EDGAR COUNTY SCHEDULE OF QUANTITIES</b>			
SCALE: _____	SHEET 3	OF 6 SHEETS	STA. _____ TO STA. _____

F.A. RTE.	SECTION	COUNTY	TOTAL SHEETS	SHEET NO.
VAR.	FY23 BRIDGE DECK SEALING	VARIOUS	24	20
CONTRACT NO. 70G25				
ILLINOIS FED. AID PROJECT				

VERMILION COUNTY STRUCTURES SCHEDULE OF QUANTITIES																														
ACTUAL MEASUREMENTS																														
SN	ROUTE CARRIED	FEATURE CROSSED	DECK			APPROACH SLABS						PARAPETS (HUB, FACE & TOP)				TYPE B CURB (FACE & TOP)			TOTAL (SQ FT)	RURAL	URBAN	INTERSTATE MPO	INTERSTATE NON-MPO	NON-INTERSTATE MPO	NON-INTERSTATE NON-MPO					
			LENGTH (E-E)	WIDTH (F-F)	AREA (SQ FT)	LENGTH (FT)	DIMENSIONS INSIDE PARAPET / CURB		DIMENSIONS BEYOND PARAPET / CURB		AREA (SQ FT)	HEIGHT	LENGTH (FT)		AREA (SQ FT)	HEIGHT	LENGTH	AREA (SQ FT)												
							LENGTH	WIDTH	LENGTH	WIDTH			3.6 FT TYPICAL	ALONG DECK												ALONG APPR.	9 INCH TYPICAL	ALONG APPR.		
092-0003	I-74 (EB)	MIDDLEFORK VERM RIV	362.2	33.5	12132.7	30.0	12.0	33.5	18.0	33.5	2010.0	3.60	362.2	12.0	2780.4	0.75	18.0	54.0	16978.0	X			X							
092-0004	I-74 (WB)	MIDDLEFORK VERM RIV	362.2	33.5	12132.7	30.0	12.0	33.5	18.0	33.5	2010.0	3.60	362.2	12.0	2780.4	0.75	18.0	54.0	16978.0	X			X							
092-0008	I-74 (EB)	N&S & FAU 7026(L-ST)	275.1	40.0	11002.8	20.0	12.0	40.0	8.0	40.0	1600.0	3.60	275.1	12.0	2153.3	0.75	8.0	24.0	0.0	-	X	X								
092-0009	I-74 (WB)	N&S & FAU 7026(L-ST)	315.2	48.0	15128.2	20.0	12.0	55.0	8.0	55.0	2200.0	3.60	315.2	12.0	2442.0	0.75	8.0	24.0	0.0	-	X	X								
092-0010	I-74 (EB)	"G" ST(FAU 7026)	115.3	40.8	4703.0	30.0	12.0	40.8	18.0	40.8	2448.0	3.60	115.3	12.0	1002.7	0.75	18.0	54.0	0.0	-	X	X								
092-0011	I-74 (WB)	"G" ST(FAU 7026)	115.3	40.8	4703.0	30.0	12.0	40.8	18.0	40.8	2448.0	3.60	115.3	12.0	1002.7	0.75	18.0	54.0	0.0	-	X	X								
092-0012	I-74 (WB)	CNRL & FR1563 & 1611	235.5	41.5	9772.0	22.2	12.0	41.5	10.2	41.5	1842.6	3.60	235.5	12.0	1868.2	0.00	10.2	0.0	0.0	-	X	X								
092-0013	I-74 (EB)	CNRL & FR1563 & 1611	235.5	53.5	12597.6	24.4	12.0	53.5	12.4	53.5	2610.8	3.60	235.5	12.0	1868.2	0.00	12.4	0.0	0.0	-	X	X								
092-0014	I-74 (WB)	VERMILION RIVER	581.5	40.0	23258.8	56.5	12.0	40.0	44.5	40.0	4520.0	3.60	581.5	12.0	4359.4	0.00	44.5	0.0	0.0	-	X	X								
092-0015	I-74 (EB)	VERMILION RIVER	581.5	44.0	25584.7	56.5	12.0	44.0	44.5	44.0	4972.0	3.60	581.5	12.0	4359.4	0.00	44.5	0.0	34917.0			X	X							
092-0023	I-74(WB)&RAMP	CSX RR & MS 9010	268.7	60.6	16281.4	50.0	15.0	60.6	35.0	60.6	6060.0	3.60	268.7	15.0	2150.4	0.75	35.0	105.0	24597.0			X	X							
092-0024	I-74(EB)	CSX RR & MS 9010	268.7	40.0	10746.8	50.0	15.0	40.0	35.0	40.0	4000.0	3.60	268.7	15.0	2150.4	0.75	35.0	105.0	17003.0			X	X							
092-0025	I-74 (WB)	RAMP 22.31	155.3	40.5	6288.4	50.0	15.0	40.5	35.0	40.5	4050.0	3.60	155.3	15.0	1333.9	0.75	35.0	105.0	11778.0			X	X							
092-0026	I-74 & RAMP	RAMPS 21.94/22.31	155.3	48.6	7546.1	50.0	15.0	48.6	35.0	48.6	4860.0	3.60	155.3	15.0	1333.9	0.75	35.0	105.0	13846.0			X	X							
EXTRACTED BASED ON ACTUAL FIELD MEASUREMENTS FROM CONTRACT 70919 IN 2015, NO AS-BUILT CORRECTIONS FROM CONTRACTS 70861 IN 2011, 70B94 IN 2017 OR 70D29 IN 2018																	TOTALS (SQ FT)			136,097	33,956	102,141	102,141	33,956						
SKIPPING LINED-OUT STRUCTURES SINCE THEY ARE BEING REPAIRED IN 2023 WITH 70A29																														
7	NO. OF STRUCTURES																		NO. OF STRUCTURES	2	5	5	2							

VERMILION COUNTY STRUCTURES SCHEDULE OF QUANTITIES																			
TRAFFIC CONTROL & PROTECTION																			
SN	ROUTE CARRIED	FEATURE CROSSED	701426 SPECIAL	701411	LOCATION	SUMMARY	CHANGEABLE MESSAGE SIGN (Calendar Days)	WORKING DAYS	PROSECUTION	RURAL	URBAN	INTERSTATE MPO	INTERSTATE NON-MPO	NON-INTERSTATE MPO	NON-INTERSTATE NON-MPO				
092-0003	I-74 (EB)	MIDDLEFORK VERM RIV	2	1	V9	4 - 701426 SPECIAL; 2 - 701411; 2 SN	4-CMS (2 EB; 2-WB); 7 CALENDAR DAYS PRIOR; 14 DAYS EACH DIRECTION; TOTAL 28 CALENDAR DAYS	2	1 DAY DRIVING LANES WB & EB; 1 DAY PASSING LANES EB & WB	X			X						
092-0004	I-74 (WB)	MIDDLEFORK VERM RIV	2	1								X			X				
092-0008	I-74 (EB)	N&S & FAU 7026(L-ST)	4											-	X	X			
092-0009	I-74 (WB)	N&S & FAU 7026(L-ST)	4											-	X	X			
092-0010	I-74 (EB)	"G" ST(FAU 7026)	INCL.	4										-	X	X			
092-0011	I-74 (WB)	"G" ST(FAU 7026)	INCL.	4										-	X	X			
092-0012	I-74 (WB)	CNRL & FR1563 & 1611	INCL.	4										-	X	X			
092-0013	I-74 (EB)	CNRL & FR1563 & 1611	INCL.	4					-	X	X								
092-0014	I-74 (WB)	VERMILION RIVER	4	4	V10	6 - 701426 SPECIAL; 3 - 701411; 5 SN	2	1 DAY DRIVING LANES WB & EB; 1 DAY PASSING LANES EB & WB	-	X	X								
092-0015	I-74 (EB)	VERMILION RIVER	2											X	X				
092-0023	I-74(WB)&RAMP	CSX RR & MS 9010	INCL.	1										X	X				
092-0024	I-74(EB)	CSX RR & MS 9010	2											X	X				
092-0025	I-74 (WB)	RAMP 22.31	2	1										X	X				
092-0026	I-74 & RAMP	RAMPS 21.94/22.31	INCL.	1										X	X				
TC&P SET-UPS and CMS CALENDAR DAYS			0	10	5	0	28		4										
WORKING DAYS PER STANDARD			0	4	0	0													

MODEL: I:\MODELS\MHFS FILE: MHFS\_Plan\Subcontractor\Documents\DOT Office\Drawings\Project\70G25\CADD\Drawings\70G25-Plan\Sheet4.dgn

USER NAME = Timothy,Brandenburg	DESIGNED - TJB	REVISED - TJB
DRAWN - _____	REVISIONS - _____	
PLOT SCALE = 40,0000' / in.	CHECKED - _____	REVISED - _____
PLOT DATE = 12/14/2022	DATE - 5/24/2022	REVISED - 12/14/2022

**STATE OF ILLINOIS  
DEPARTMENT OF TRANSPORTATION**

**VERMILION COUNTY  
SCHEDULE OF QUANTITIES**

SCALE: \_\_\_\_\_ SHEET 4 OF 6 SHEETS STA. \_\_\_\_\_ TO STA. \_\_\_\_\_

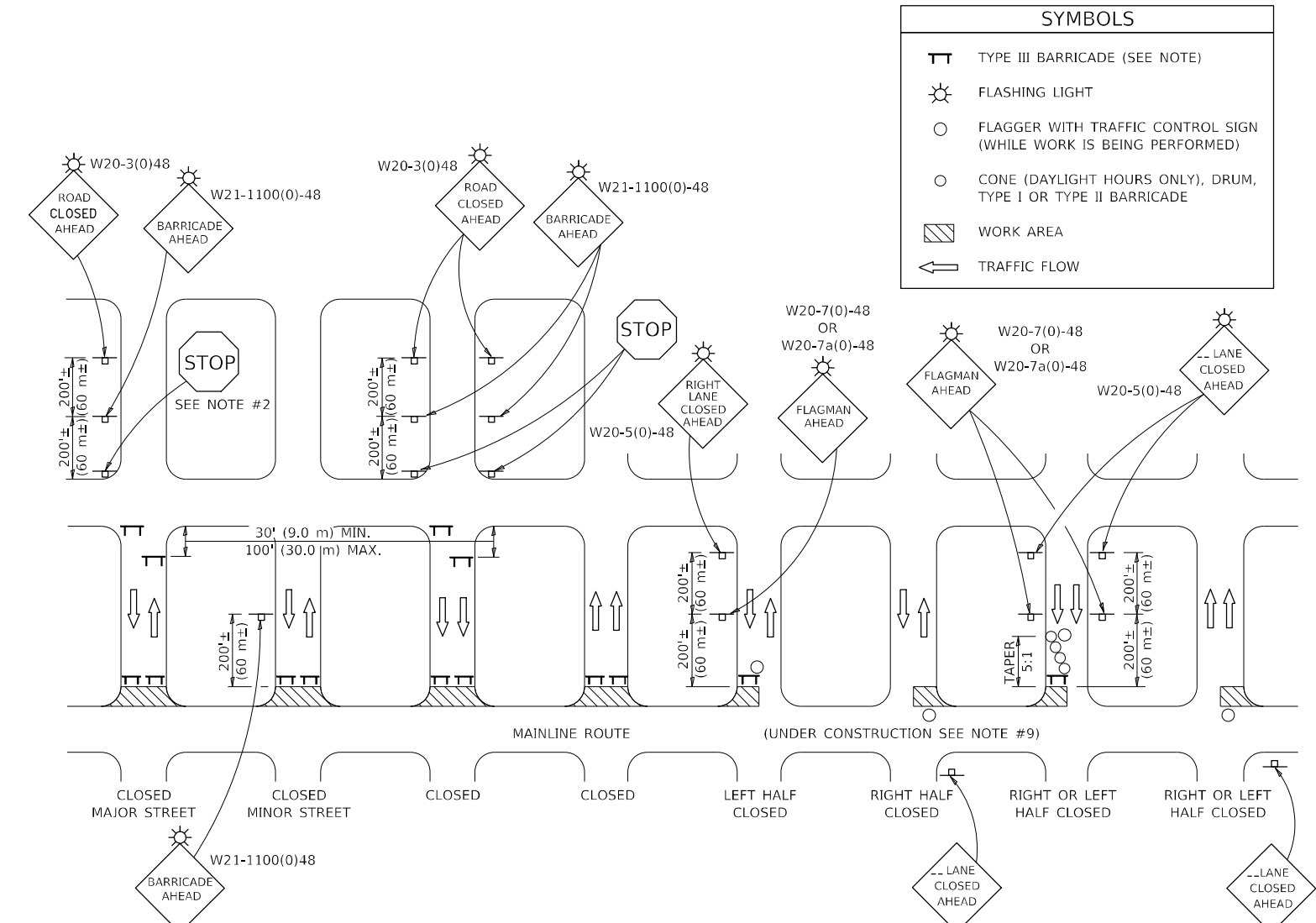
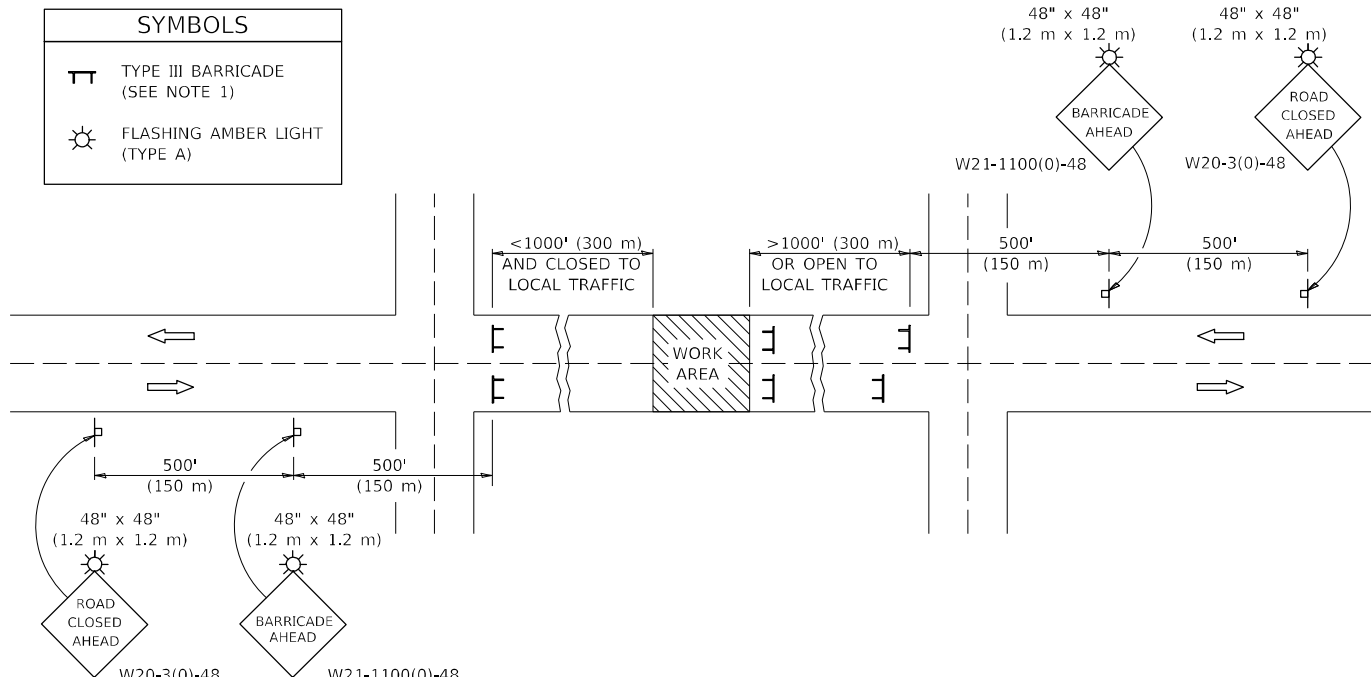
F.A. RTE.	SECTION	COUNTY	TOTAL SHEETS	SHEET NO.
VAR.	FY23 BRIDGE DECK SEALING	VARIOUS	24	21
CONTRACT NO. 70G25				
ILLINOIS FED. AID PROJECT				

VERMILION COUNTY STRUCTURES SCHEDULE OF QUANTITIES																																									
ACTUAL MEASUREMENTS																																									
SN	ROUTE CARRIED	FEATURE CROSSED	DECK			APPROACH SLABS						PARAPETS (HUB, FACE & TOP)				TYPE B CURB (FACE & TOP)			TOTAL (SQ FT)	RURAL	URBAN	INTERSTATE MPO	INTERSTATE NON-MPO	NON-INTERSTATE MPO	NON-INTERSTATE NON-MPO																
			LENGTH (E-E)	WIDTH (F-F)	AREA (SQ FT)	LENGTH (FT)	DIMENSIONS INSIDE PARAPET / CURB		DIMENSIONS BEYOND PARAPET / CURB		AREA (SQ FT)	HEIGHT	LENGTH (FT)		AREA (SQ FT)	HEIGHT	LENGTH	AREA (SQ FT)																							
							LENGTH	WIDTH	LENGTH	WIDTH			3.6 FT TYPICAL	ALONG DECK												ALONG APPR.	9 INCH TYPICAL	ALONG APPR.													
092-0033	FAP 332 (IL 1)	NFVR	260.0	32.0	8320.0	20.0	0.0	32.0	20.0	33.2	1328.0	3.60	260.0	0.0	1872.0	0.75	20.0	60.0	11580.0	X						X															
092-0034	FAP 332 (IL 1)	NFVR	332.4	32.0	10636.8	29.7	10.2	32.0	19.5	33.2	1947.6	3.60	332.4	10.2	2540.2	0.75	19.5	58.5	15184.0	X						X															
092-0036	IL 1/US 150 (FAP 332)	VERMILION RIVER	851.7	60.0	51102.0	24.0	24.0	60.0	0.0	0.0	2880.0	9.00	851.7	24.0	16194.6	0.00	0.0	0.0	70177.0		X				X																
092-0038	IL 1/US 150 (FAP 332)	I-74 & CD16.23/16.33	289.0	88.0	25432.0	30.0	10.0	88.0	20.0	88.0	5280.0	5.12	289.0	23.0	6860.8	2.00	20.0	320.0	0.0		X	-	-		X																
092-0039	IL 1/US 150 (FAP 332)	14TH ST (FAU 7010)	141.2	88.0	12425.6	30.0	8.0	88.0	22.0	88.0	5280.0	3.75	160.0	8.0	2640.0	1.00	20.0	80.0	20426.0		X				X																
092-0045	IL 9 (FAP 697)	W BR FOUNTAIN CREEK	102.5	28.0	2870.0	0.0	0.0	0.0	0.0	0.0	0.0	3.75	102.5	0.0	768.8	0.00	5.0	0.0	3639.0	X						X															
092-0046	IL 9 (FAP 697)	CREEK	64.8	28.0	1814.4	0.0	0.0	0.0	0.0	0.0	0.0	3.92	64.8	0.0	508.0	0.00	0.0	0.0	2323.0	X						X															
092-0053	US 150 (FAP 729)	N FORK VERMILION RIV	500.0	56.0	28000.0	30.0	19.0	70.0	11.0	70.0	4200.0	7.85	500.0	19.0	8446.6	0.00	0.0	0.0	40647.0		X				X																
092-0057	"A" AVE (MS 6480)	US 150 (FAP 729)	159.0	37.0	5883.0	36.0	36.0	30.0	0.0	0.0	2160.0	5.50	159.0	36.0	2541.0	0.00	0.0	0.0	10584.0		X				X																
092-0058	US 136 (FAP 709)	MIDDLE FORK RIVER	284.6	32.0	9107.2	31.0	21.0	24.0	10.0	24.0	1488.0	3.66	284.6	21.0	2390.7	0.70	6.0	16.8	13003.0	X						X															
092-0095	FAS 513 (CH 18)	LITTLE VERMILION RIV	120.0	28.5	3420.0	0.0	0.0	0.0	0.0	0.0	0.0	1.60	120.0	0.0	384.0	0.00	0.0	0.0	3804.0	X						X															
092-0096	FAS 1343 (CH 41)	N FORK VERMILION RIV	109.0	24.0	2616.0	20.0	0.0	0.0	20.0	24.0	960.0	3.10	109.0	0.0	675.8	0.00	0.0	0.0	4252.0	X						X															
092 0101	IL 49 (FAP 840)	UPRR	362.0	32.0	11584.0	20.0	0.0	0.0	20.0	32.0	1280.0	1.38	362.0	0.0	995.5	0.00	0.0	0.0	13860.0	X						X															
092-0115	CH 11	I-74	185.6	28.0	5196.8	0.0	0.0	0.0	0.0	0.0	0.0	4.00	185.6	0.0	1484.8	0.65	5.5	14.3	6696.0	X						X															
092-0125	TR 206	I-74	184.5	26.0	4797.0	0.0	0.0	0.0	0.0	0.0	0.0	4.10	184.5	0.0	1512.9	0.00	0.0	0.0	6310.0	X						X															
092-0126	TR-250	I-74	251.8	26.0	6546.8	0.0	0.0	0.0	0.0	0.0	0.0	3.70	251.8	0.0	1863.3	0.00	0.0	0.0	0.0		X	-	-		X	-															
092-0127	TR 251 B	I-74	263.0	24.0	6312.0	0.0	0.0	0.0	0.0	0.0	0.0	3.67	263.0	0.0	1930.4	0.00	0.0	0.0	8243.0	X						X															
092-0128	TR-300	I-74	205.6	24.0	4934.4	0.0	0.0	0.0	0.0	0.0	0.0	4.29	205.6	0.0	1764.9	0.00	0.0	0.0	0.0		X	-	-		X	-															
092-0129	FAU 7019 (TR 354)	I-74	259.0	24.0	6216.0	0.0	0.0	0.0	0.0	0.0	0.0	5.29	259.0	0.0	2740.2	0.00	0.0	0.0	0.0		X	-	-		X	-															
092-0144	US 136 (FAP 729)	LICK CREEK	142.7	42.5	6064.8	0.0	0.0	0.0	0.0	0.0	0.0	4.23	142.7	0.0	1207.2	0.00	0.0	0.0	7272.0		X				X																
092-0146	TR 8 A	I-74	188.6	26.0	4903.6	0.0	0.0	0.0	0.0	0.0	0.0	4.00	188.6	0.0	1508.8	0.00	0.0	0.0	6413.0	X						X															
092-0148	TR 102	I-74	186.0	26.0	4836.0	0.0	0.0	0.0	0.0	0.0	0.0	4.00	186.0	0.0	1488.0	0.00	0.0	0.0	6324.0	X						X															
092-0151	CH 28 (BREWER RD)	I-74	199.5	26.0	5187.0	20.0	0.0	0.0	20.0	20.0	800.0	5.29	199.5	0.0	2110.7	0.00	0.0	0.0	8098.0		X				X																
092-0169	FAS 509 (CH 23)	FAIRVIEW CREEK	56.7	44.0	2494.8	30.0	0.0	0.0	30.0	24.0	1440.0	2.25	56.7	0.0	255.2	0.00	0.0	0.0	4190.0	X						X															
092-0170	FAS 509 (CH 23)	FAYETTE CREEK	97.0	46.0	4462.0	0.0	0.0	0.0	0.0	0.0	0.0	2.25	97.0	0.0	436.5	0.00	0.0	0.0	4899.0	X						X															
092-0171	IL 49 (FAP 840)	TRIB STONY CREEK	94.0	32.5	3055.0	30.0	0.0	0.0	30.0	32.5	1950.0	0.00	94.0	0.0	0.0	0.00	0.0	0.0	5005.0	X						X															
092-0172	CH 15 (BISMARCK RD)	N FORK VERMILION RIV	108.0	32.5	3510.0	20.0	0.0	22.5	20.0	22.5	900.0	3.80	108.0	0.0	820.8	0.00	0.0	0.0	5231.0	X						X															
092-0173	CH 15 (BISMARCK RD)	E BRANCH VERMILION RIV	330.0	32.5	10725.0	20.0	0.0	22.5	20.0	22.5	900.0	3.80	330.0	0.0	2508.0	0.00	0.0	0.0	14133.0	X						X															
092-0174	IL 49 (FAP 840)	FAST CREEK	37.0	33.0	1221.0	0.0	0.0	0.0	0.0	0.0	0.0	0.00	37.0	0.0	0.0	0.00	0.0	0.0	1221.0	X						X															
092-0177	FAS 331 (CH 10)	SALT FORK	399.0	30.0	11970.0	0.0	0.0	0.0	0.0	0.0	0.0	3.66	399.0	0.0	2920.7	0.00	0.0	0.0	14891.0	X						X															
092-0182	IL 49 (FAP 840)	STONY CREEK TRIB	61.0	34.0	2074.0	21.0	0.0	0.0	21.0	26.0	1092.0	3.66	61.0	0.0	446.5	0.65	5.5	14.3	3627.0	X						X															
092-0187	SBI 10 (US 150)	STONY CREEK	139.0	32.0	4448.0	31.0	6.5	12.0	24.5	17.2	998.8	3.60	139.0	0.0	1000.8	0.80	5.0	16.0	6464.0	X						X															
092-0189	FAP 332 (IL 1)	STREAM	26.0	32.0	832.0	20.0	0.0	32.0	20.0	32.0	1280.0	2.30	26.0	0.0	119.6	0.75	20.0	60.0	2292.0	X						X															
092-0191	FAP 332 (IL 1)	CREEK	84.6	40.5	3426.3	35.5	15.5	40.5	20.0	40.5	2875.5	3.60	84.6	0.0	609.1	0.00	0.0	0.0	6911.0		X				X																
092-0192	FAP 697 (IL 9)	DRAINAGE DITCH	71.1	32.5	2310.8	24.0	4.0	32.5	20.0	32.5	1560.0	3.60	71.1	0.0	511.9	0.00	0.0	0.0	4383.0		X				X																
092-0193	FAS 497 (CH 15)	PAINTER CREEK	54.5	30.0	1635.0	20.0	0.0	0.0	20.0	30.0	1200.0	3.60	54.5	0.0	392.4	1.10	58.5	64.4	3292.0	X						X															
092-0195	FAS 500 (CH 3)	PAINTER CREEK	54.0	30.0	1620.0	20.0	0.0	0.0	20.0	30.0	1200.0	4.15	54.0	0.0	448.2	0.60	20.0	48.0	3317.0	X						X															
092-0196	FAP 840 (IL 49)	MIDDLE FORK RIVER	200.5	36.0	7218.0	0.0	0.0	0.0	0.0	0.0	0.0	3.67	200.5	0.0	1471.7	0.00	0.0	0.0	8690.0	X						X															
092-0198	FAU 7045 (BOWMAN AVE)	I-74 & RAMP 18.32	229.0	63.0	14427.0	54.0	54.0	60.5	0.0	0.0	6534.0	4.55	229.0	0.0	4167.8	0.70	125.0	350.0	25479.0		X				X																
092-0200	US 136 (FAP 711)	BLUE GRASS CREEK	198.8	36.5	7256.2	32.0	16.0	36.5	16.0	36.5	2336.0	4.60	198.8	16.0	2123.4	1.10	18.0	39.6	11756.0	X						X															
092-0201	US 136 (FAP 711)	BEAN CREEK	196.0	37.0	7252.0	31.5	12.5	37.0	19.0	37.0	2331.0	3.70	196.0	12.5	1635.4	0.90	18.0	64.8	11284.0	X						X															
092-0202	IL 1/US 150 (FAP 332)	N&S RR	367.8	86.0	31630.8	31.0	15.0	86.0	16.0	86.0	5332.0	3.67	367.8	15.0	5839.7	0.85	16.0	54.4	42857.0		X				X																
092-0203	IL 49 (FAP 840)	I-74	220.0	32.0	7040.0	30.0	0.0	32.0	30.0	32.0	1920.0	3.80	220.0	0.0	1672.0	0.60	30.0	72.0	10704.0	X						X															
092-0204	TILTON ROAD	I-74	266.9	42.0	11209.8	30.0	15.0	42.0	15.0	42.0	2520.0	7.50	266.9	15.0	4453.5	0.80	15.0	24.0	18208.0		X				X																
092-0205	IL 1/US 136 (FAP 332)	N FORK VERMILION RIV	421.9	40.5	17087.0	32.0	32.0	40.5	0.0	0.0	2592.0	4.16	421.9	32.0	4042.7	0.65	18.0	46.8	23769.0		X				X																
092-0206	IL 1/US 150 (FAP 332)	LITTLE VERMILION RIV	150.0	40.0	6000.0	30.0	0.0	40.0	30.0	40.0	2400.0	3.76	150.0	0.0	1128.0	0.65	30.0	78.0	9606.0		X				X																
092 0207	IL 119 (FAP 711)	N FORK VERMILION RIV	292.5	32.0	9360.0	30.0	15.0	32.0	15.0	33.8	1974.0	3.60	292.5	15.0	2322.0	0.75	15.0	45.0	13701.0	X						X															
092-2022	IL 9 (FAP 697)	CREEK	24.2	40.0	968.0	28.0	0.0	0.0	28.0	40.0	2240.0	1.70	24.2	0.0	82.3	0.00	0.0	0.0	3291.0	X						X															
092-2036	FAS 331 (CH 10)	STREAM	30.0	30.0	900.0	20.0	0.0	0.0	20.0	32.0	1280.0	2.50	30.0	0.0	150.0	0.00	0.0	0.0	2330.0	X						X															
092-6000	US 136 MAIN ST	STONY CREEK	138.0	46.5	6417.0	0.0	0.0	0.0	0.0	0.0	0.0	10.00	62.0	0.0	1240.0	0.00	0.0	0.0	7657.0		X				X																
ECTED BASED ON ACTUAL FIELD MEASUREMENTS FROM CONTRACT 70919 IN 2015; NO AS-BUILT CORRECTIONS FROM CONTRACTS 70861 IN 2011, 70B94 IN 2017 OR 70D29 IN 2018																		TOTALS (SQ FT																							



# ROAD CLOSURE

# SIDEROAD / STREET CLOSURE



## GENERAL NOTES

- TYPE III BARRICADES SHALL BE AS SHOWN ON STANDARD 701901 "TYPICAL APPLICATIONS OF TYPE III BARRICADES CLOSING A ROAD". EACH TYPE III BARRICADE SHALL HAVE TWO FLASHING AMBER LIGHTS MOUNTED ABOVE IT.
- IF THE ROAD IS OPEN TO LOCAL TRAFFIC OR EXCEEDS 1000' (300 m), ANOTHER SET OF TYPE III BARRICADES, EQUIPPED AS IN NOTE 1 ABOVE, SHALL BE PLACED AT EACH END OF THE WORK AREA.
- WHEN A STOP CONDITION EXISTS, NO SIGNS ARE REQUIRED IN ADVANCE OF THE "STOP" SIGN WHEN THE ROAD IS CLOSED WITHIN 100' (30 m) OF THE INTERSECTION.
- STANDARD 701901 SHALL APPLY FOR THE PLACEMENT & DESIGN OF TYPE III BARRICADES.
- IF A TYPE III BARRICADE WITH AN ATTACHED SIGN PANEL WHICH MEETS NCHRP 350 IS NOT AVAILABLE, THE SIGNS MAY BE MOUNTED ON AN NCHRP 350 TEMPORARY SIGN SUPPORT DIRECTLY IN FRONT OF THE BARRICADE.
- REFLECTORIZED STRIPING SHALL APPEAR ON BOTH SIDES OF THE TYPE III BARRICADES IF ROAD IS OPEN TO LOCAL TRAFFIC.
- ALL SIGNS SHALL BE POST MOUNTED IF THE CLOSURE TIME EXCEEDS FOUR DAYS.
- A MINIMUM OF TWO FLASHING LIGHTS SHALL BE USED AT NIGHT ON EACH APPROACH IN ADVANCE OF THE WORK AREA. FLASHING LIGHTS SHALL BE INSTALLED ABOVE THE FIRST TWO SIGNS IN THE SERIES.
- LONGITUDINAL DIMENSIONS MAY BE ADJUSTED SLIGHTLY TO FIT FIELD CONDITIONS.
- FORMS BT. 725 AND BT. 726 ARE REQUIRED.
- WHEN A SIDEROAD INTERSECTS THE HIGHWAY ON WHICH WORK IS BEING PERFORMED, ADDITIONAL TRAFFIC DEVICES SHALL BE ERECTED AND PROVIDED AS DIRECTED BY THE ENGINEER.
- AN ADDITIONAL SIGN MAY BE REQUIRED AT A MAJOR INTERSECTING ROAD IN ADVANCE OF THE CLOSURE. THE ADDITIONAL SIGN SHALL GIVE THE DISTANCE TO THE BARRICADE IN MILES OR FRACTIONS OF A MILE.

## GENERAL NOTES

- TYPE III BARRICADES SHALL BE AS SHOWN ON "TYPICAL APPLICATIONS OF TYPE III BARRICADES CLOSING A ROAD". EACH TYPE III BARRICADE SHALL HAVE TWO FLASHING AMBER LIGHTS MOUNTED ABOVE IT.
- WHERE A STOP CONDITION EXISTS, AS SHOWN ABOVE, WARNING SIGNS MAY BE OMITTED IN ADVANCE OF THE "STOP" SIGN.
- STANDARD 701901 SHALL APPLY FOR THE PLACEMENT & MANUFACTURE OF TYPE III BARRICADES.
- ALL SIGNS SHALL BE POST MOUNTED IF THE CLOSURE TIME EXCEEDS FOUR DAYS.
- ONE FLASHING LIGHT IS REQUIRED ABOVE EACH ADVANCE WARNING SIGN DURING HOURS OF DARKNESS.
- LONGITUDINAL DIMENSIONS MAY BE ADJUSTED SLIGHTLY TO FIT FIELD CONDITIONS.
- FORMS BT 725 AND BT 726 ARE REQUIRED.
- THE MAINLINE ROUTE TEMPORARY TRAFFIC CONTROL SHALL BE IN ACCORDANCE WITH THE PLANS, SPECIAL PROVISIONS AND STANDARD SPECIFICATIONS.
- ALL FLAGGERS REQUIRED AT SIDE ROADS AND ENTRANCES REMAINING OPEN TO TRAFFIC AND/OR ADDITIONAL BARRICADES REQUIRED BY THE ENGINEER TO CLOSE SIDE ROADS AND ENTRANCES WILL BE PAID FOR ACCORDING TO ARTICLE 109.04.

Note: All dimensions are in INCHES (millimeters) unless otherwise shown.

MODEL: I:\MODEL\NAME FILE NAME: ...

USER NAME = brandenburgtj	DESIGNED - _____	REVISED - 11/06
DRAWN - _____	REVISOR - 12/07	
PLOT SCALE = 40,0000 * / in.	CHECKED - _____	REVISED - 09/09 KJT
PLOT DATE = 5/25/2022	DATE - _____	REVISED - _____

**STATE OF ILLINOIS  
DEPARTMENT OF TRANSPORTATION**

**TRAFFIC CONTROL & PROTECTION DEVICES  
(ROAD & SIDEROAD / STREET CLOSURES)**

SCALE: \_\_\_\_\_ SHEET 1 OF 1 SHEETS STA. \_\_\_\_\_ TO STA. \_\_\_\_\_

<b>DISTRICT 5 DETAIL NO. 7020000</b>			
F.A. RTE.	SECTION	COUNTY	TOTAL SHEETS
VAR.	FY23 BRIDGE DECK SEALING	VARIOUS	24 24
			CONTRACT NO. 70G25
		ILLINOIS	FED. AID PROJECT