

ROAD CLASSIFICATION: MAJOR COLLECTOR
DESIGN SPEED: 50 M.P.H.

ADT:
(2021) = 450
(2041) = 630
PC = 554
SU = 44
MU = 32
DHV₂₀ = 63

03-10-2023 LETTING ITEM 140

STATE OF ILLINOIS
DEPARTMENT OF TRANSPORTATION
DIVISION OF HIGHWAYS
PLANS FOR PROPOSED ROADWAY IMPROVEMENTS

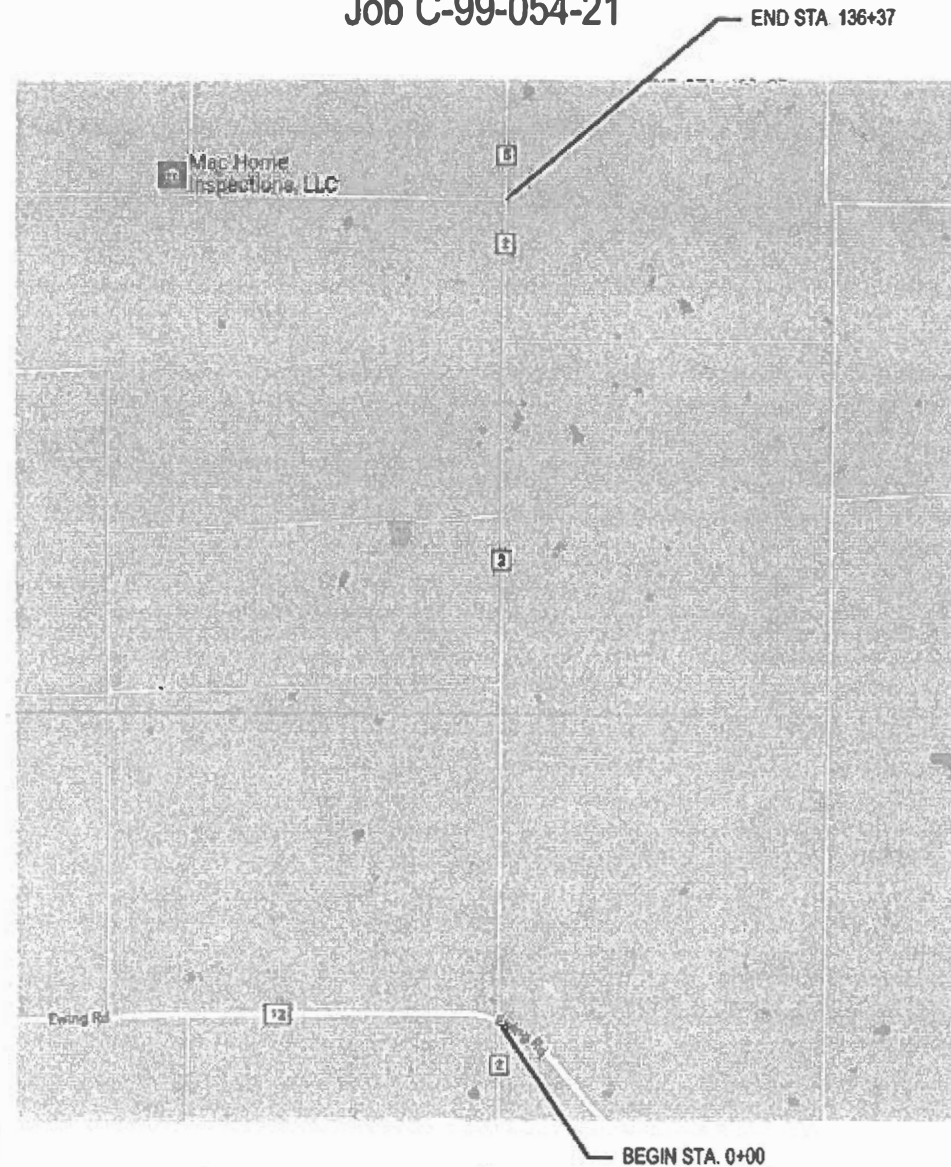
CH 2 Log Cabin Road
Franklin County, Illinois
Section 20-00189-00-RS
Project DTOV(161)
Job C-99-054-21

ROUTE	SECTION	COUNTY	SHEET NO.
CH 2	20-00189-00-RS	FRANKLIN	1 OF 6
CONTRACT 99690			

SHEET NO.	TITLE
1	COVER SHEET AND SUMMARY OF QUANTITIES
2	MISCELLANEOUS DETAILS AND TYPICAL SECTIONS
3	MISCELLANEOUS DETAILS
4-6	PLAN

STANDARDS

701006-05
701301-04
701306-04
701311-03
701901-08
780001-05
BLR 24-2



LOCATION MAP
NET LENGTH = 2.53 miles (13357 Feet)

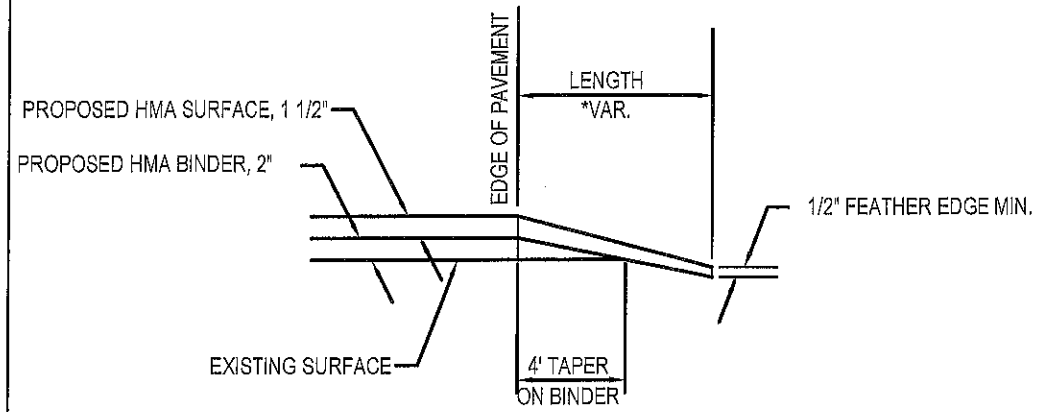
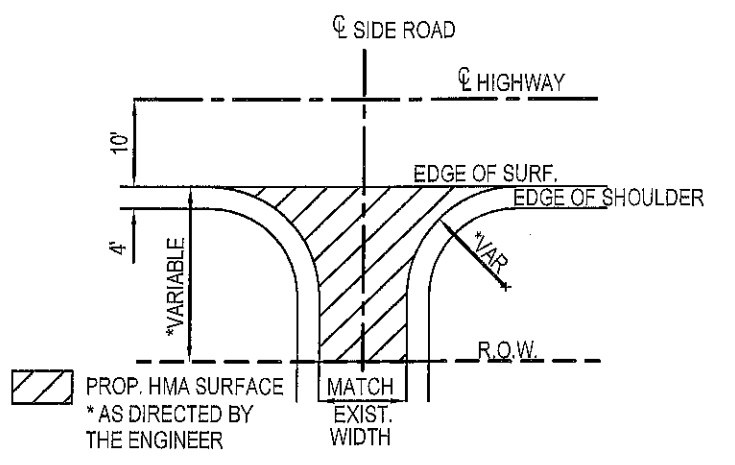


SUMMARY OF QUANTITIES			
CODE NO.	PAY ITEM	UNIT	TOTAL
40200800	AGGREGATE SURFACE COURSE, TYPE B	TON	39
40600275	BITUMINOUS MATERIALS (PRIME COAT)	POUND	3,290
40600982	HOT-MIX ASPHALT SURFACE REMOVAL - BUTT JOINT	SQ YD	307
40603085	HOT-MIX ASPHALT BINDER COURSE, IL 19.0, N70	TON	3,965
40604052	HOT-MIX ASPHALT SURFACE COURSE, IL 9.5 MIX "C", N70	TON	3,101
48100100	AGGREGATE SHOULDERS, TYPE A	TON	4,600
67100100	MOBILIZATION	L SUM	1
70100460	TRAFFIC CONTROL AND PROTECTION STANDARD 701306	L SUM	1
70300100	SHORT-TERM PAVEMENT MARKING	FOOT	2,719
Δ78001110	PAINT PAVEMENT MARKING - LINE 4"	FOOT	39,372
Δ	SPECIALTY ITEM		

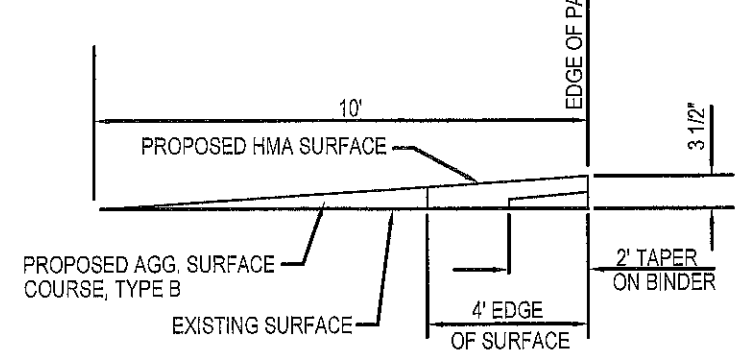
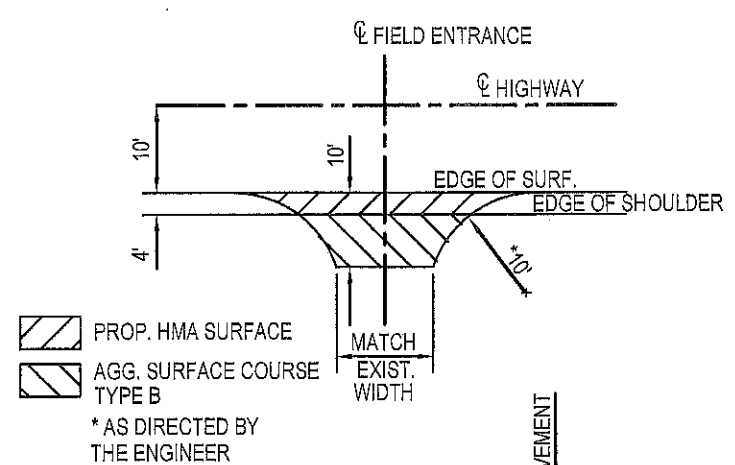
STATE OF ILLINOIS DEPARTMENT OF TRANSPORTATION	
APPROVED	11/3/2023 <i>[Signature]</i>
FRANKLIN COUNTY HIGHWAY ENGINEER	
PASSED	1/5/23 <i>[Signature]</i>
DISTRICT ENGINEER OF LOCAL ROADS & STREETS	
RELEASING FOR BID	
BASED ON LIMITED REVIEW	1/5/23 <i>[Signature]</i>
DEPUTY DIRECTOR OF HIGHWAYS, REGION 5 ENGINEER	



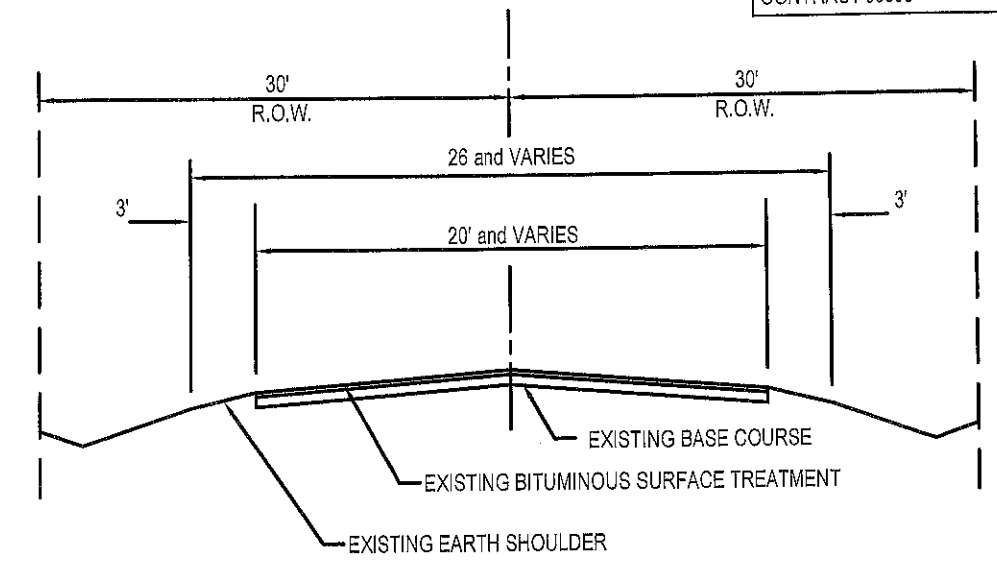
[Signature]
MICHAEL A. ROLLA
ILLINOIS REGISTERED PROFESSIONAL ENGINEER
#062-056332
LIC. EXPIRES 11/30/2023



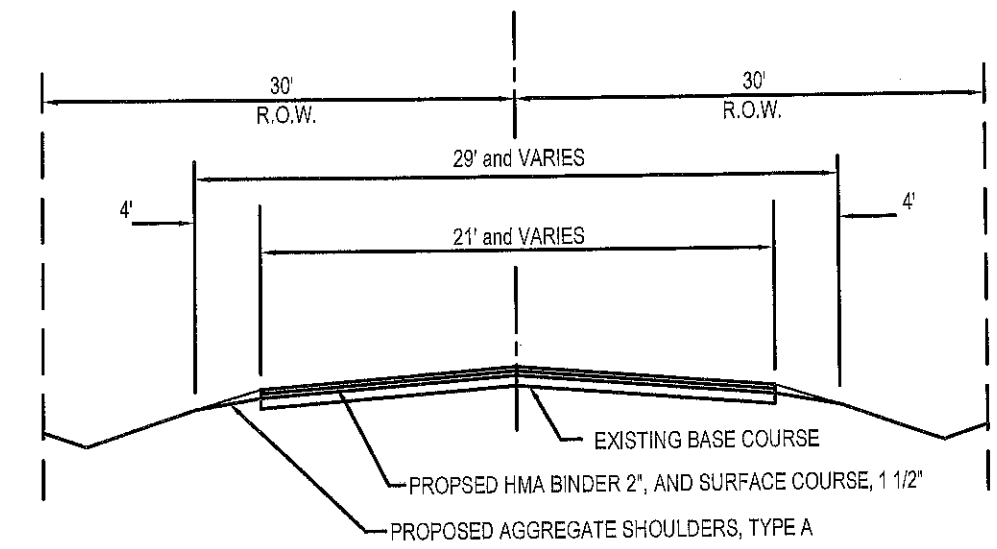
SIDEROAD DETAILS



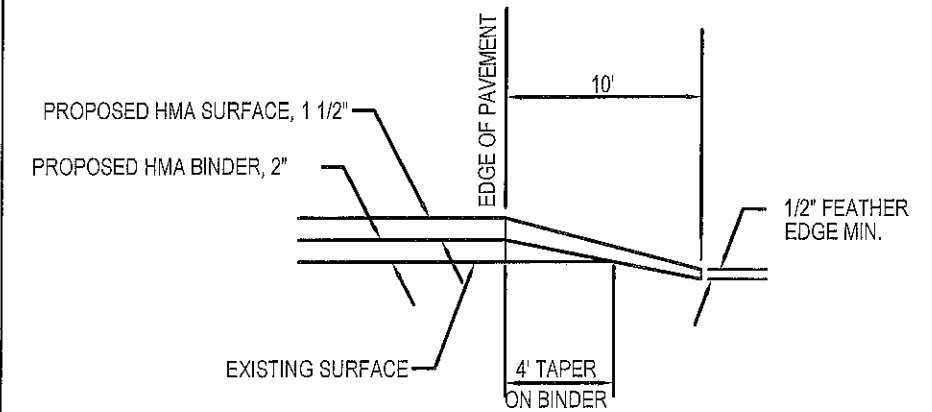
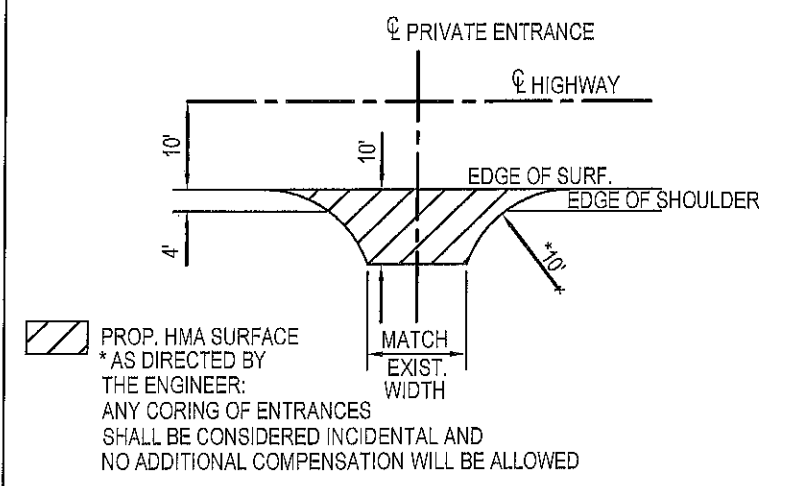
FIELD ENTRANCE DETAILS



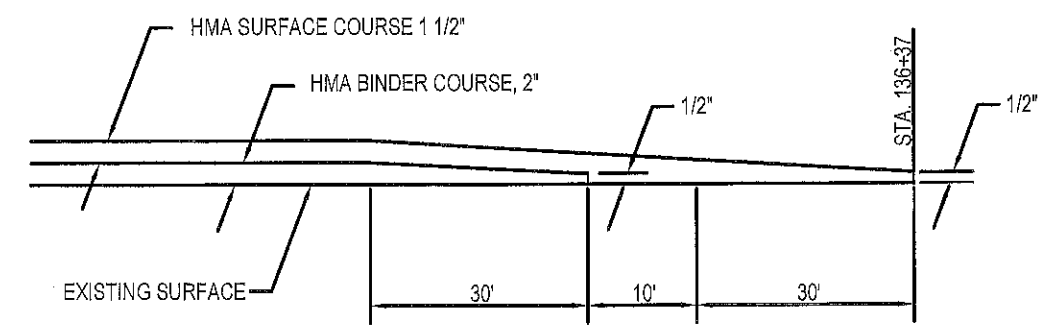
TYPICAL EXISTING SECTION



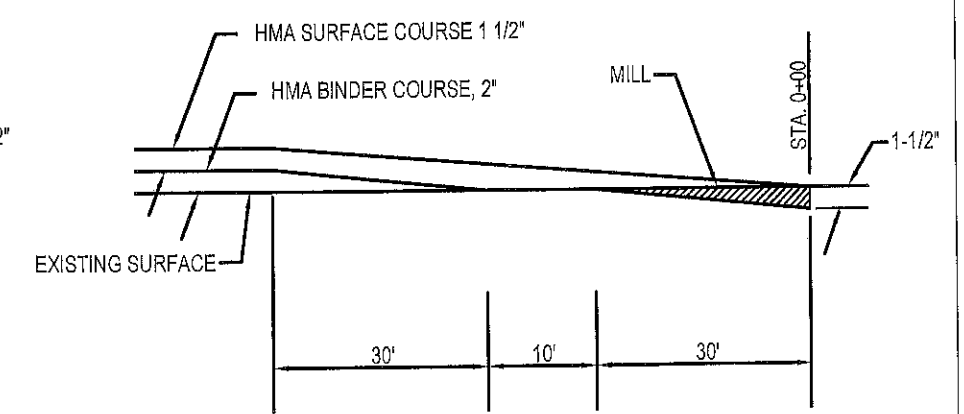
TYPICAL PROPOSED SECTION



PRIVATE AND COMMERCIAL ENTRANCE DETAILS



FEATHER JOINT



BUTT JOINT

MISCELLANEOUS DETAILS & TYPICAL SECTIONS

FIELD ENTRANCE QUANTITIES		
ENTRANCES	AGGREGATE SURFACE COURSE TYPE B, TON	HOT MIX ASPHALT SURFACE COURSE, IL 9.5, MIX "C", N70, TON
ONE (1) ENTRANCE	2.8	1.1
TOTAL = 14 ENTRANCES	39	15.2

MILLING SCHEDULE		
LOCATION	TYPE	COLD MILLING
STA. 0+00 TO 0+40	BUTT JOINT	307 SQ YD
TOTAL		307 SQ YD

MAILBOX TURNOUT QUANTITIES		
TURNOUT	BITUMINOUS MATERIALS (PRIME COAT) GALLON	HOT MIX ASPHALT SURFACE COURSE, IL 9.5, MIX "C", N70, TON
ONE (1) TURNOUT	2.9	1
TOTAL = 9 TURNOUTS	25.7	0.8

PRIVATE ENTRANCE QUANTITIES		
ENTRANCES	BITUMINOUS MATERIALS (PRIME COAT) GALLON	HOT MIX ASPHALT SURFACE COURSE, IL 9.5, MIX "C", N70, TON
ONE (1) ENTRANCE	6	2.8
TOTAL = 16 ENTRANCES	95.9	44.8

COMMERCIAL ENTRANCE QUANTITIES		
ENTRANCES	BITUMINOUS MATERIALS (PRIME COAT) GALLON	HOT MIX ASPHALT SURFACE COURSE, IL 9.5, MIX "C", N70, TON
ONE (1) ENTRANCE	13	6
TOTAL = 1 ENTRANCE	13	6

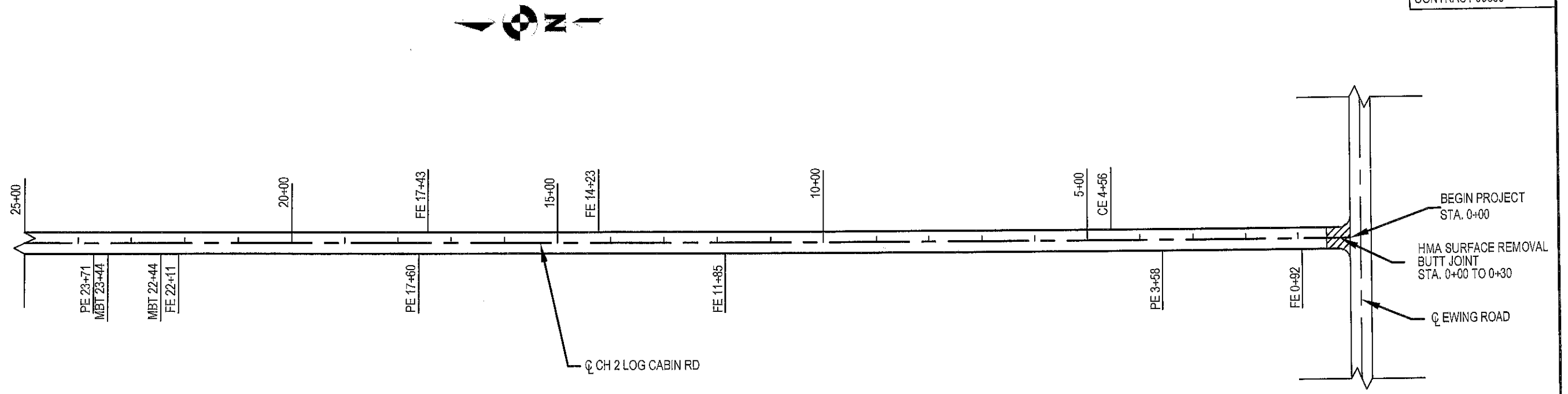
SIDEROAD QUANTITIES		
ENTRANCES	BITUMINOUS MATERIALS (PRIME COAT) GALLON	HOT MIX ASPHALT SURFACE COURSE, IL 9.5, MIX "C", N70, TON
STA. 42+98 RT	28.6	8
STA. 55+05 LT	59.8	16.7
STA. 83+12 LT	56.7	15.9
STA. 112+00 RT	51.3	14.4
STA. 135+57 LT	64	17.9
TOTAL = 5 ENTRANCES	260.4	72.9

SCHEDULE OF PAVEMENT MARKING LINE, 4"							
NORTHBOUND LANE				SOUTHBOUND LANE			
STATION	NO PASSING (YELLOW SOLID)	PASSING (YELLOW DASHED)	STATION	NO PASSING (YELLOW SOLID)	PASSING (YELLOW DASHED)	STATION	EDGE LINE (WHITE SOLID)
0+00 TO 2+00		50	2+00 TO 3+50		38	0+00 TO 136+37	26937
2+00 TO 3+50	150		8+57 TO 10+00	143			
3+50 TO 8+57		127	10+00 TO 13+07	307			
8+57 TO 10+00		36	13+07 TO 15+50		61		
10+00 TO 13+07	307		117+57 TO 18+00	43			
13+07 TO 15+50	243		18+00 TO 23+75	575			
15+50 TO 17+57		52	23+75 TO 24+32	57			
17+57 TO 18+00		11	26+57 TO 32+57	600			
18+00 TO 23+75	575		49+00 TO 53+50		113		
23+75 TO 24+32		14	57+07 TO 62+57	550			
24+32 TO 26+57		56	67+00 TO 75+57		214		
26+57 TO 32+57		150	75+57 TO 84+07	850			
32+57 TO 49+00		411	89+00 TO 95+50		163		
49+00 TO 53+50	450		97+07 TO 104+07		175		
53+50 TO 57+07		89	108+00 TO 115+00	700			
57+07 TO 62+57		138	116+57 TO 123+57	700			
62+57 TO 67+00		111	128+50 TO 136+37		197		
67+00 TO 75+57	857						
75+57 TO 84+07		213					
84+07 TO 89+00		123					
89+00 TO 95+50	650						
95+50 TO 97+07		39					
97+07 TO 104+07	700						
104+07 TO 108+00		63					
108+00 TO 115+00		175					
115+00 TO 116+57		39					
116+57 TO 123+57		175					
123+57 TO 128+50		123					
128+50 TO 136+37	787						
	4719	2195		4525	961		
TOTAL YELLOW			12400			TOTAL WHITE	26937

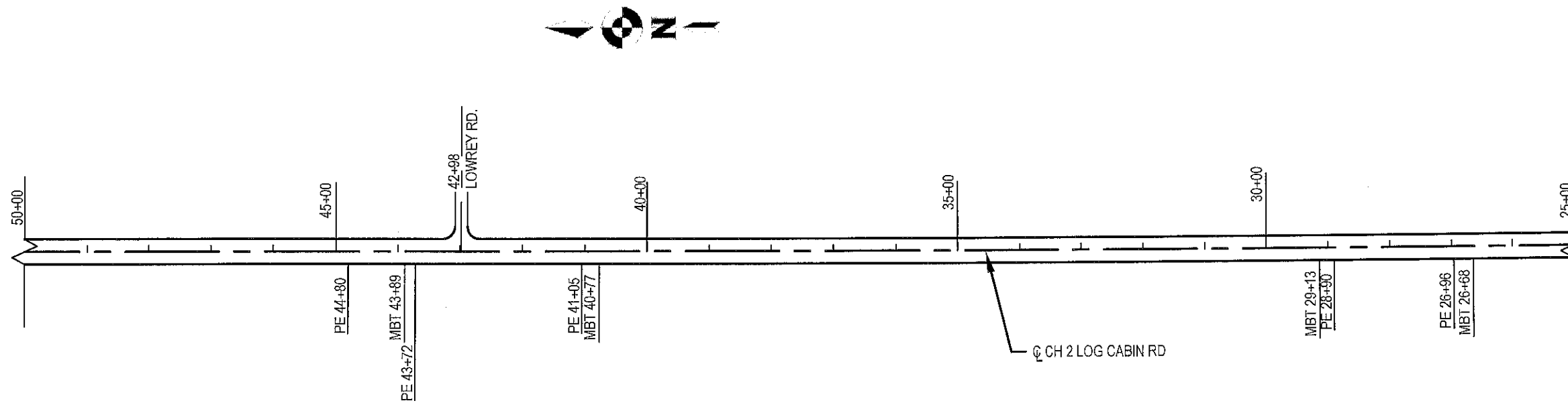
MISCELLANEOUS DETAILS

SCALE 1" = 200'

ROUTE	SECTION	COUNTY	SHEET NO.
CH 2	20-00189-00-RS	FRANKLIN	4 OF 6
CONTRACT 99690			



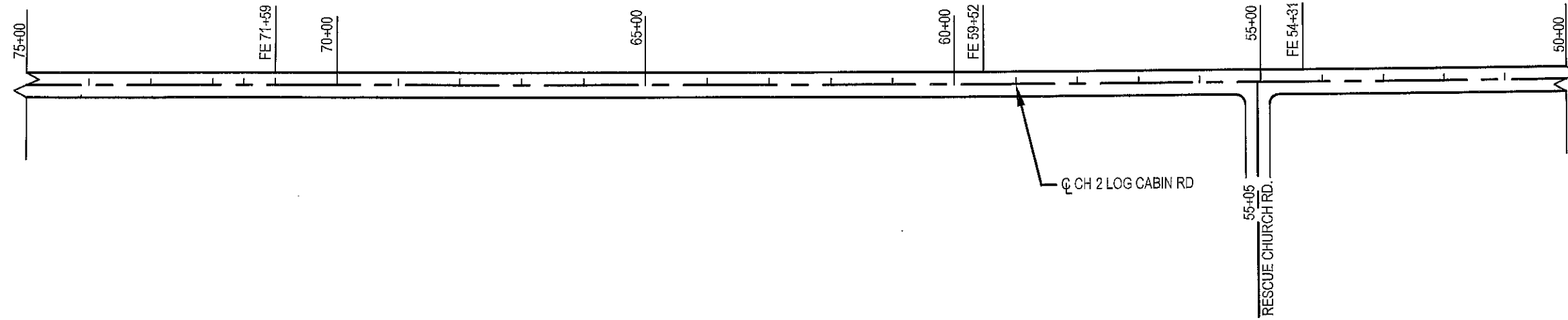
SCALE 1" = 200'



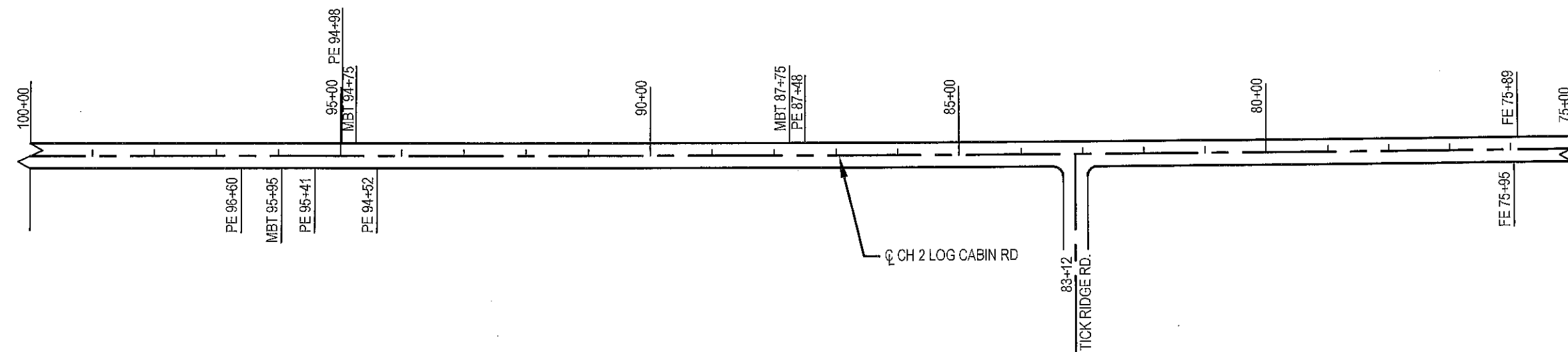
PLAN
STATION 0+00 TO 50+00

SCALE 1" = 200'

ROUTE	SECTION	COUNTY	SHEET NO.
CH 2	20-00189-00-RS	FRANKLIN	5 OF 6
CONTRACT 99690			



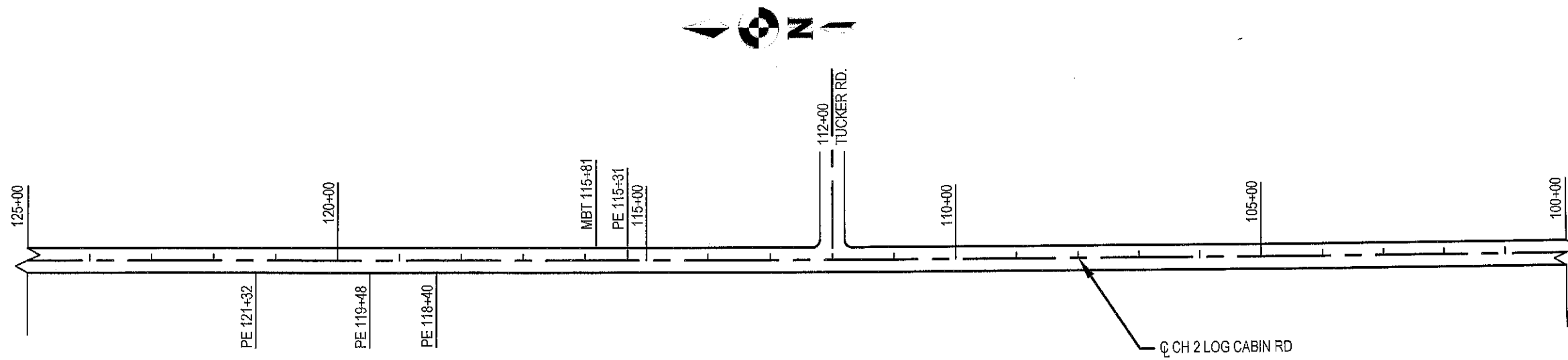
SCALE 1" = 200'



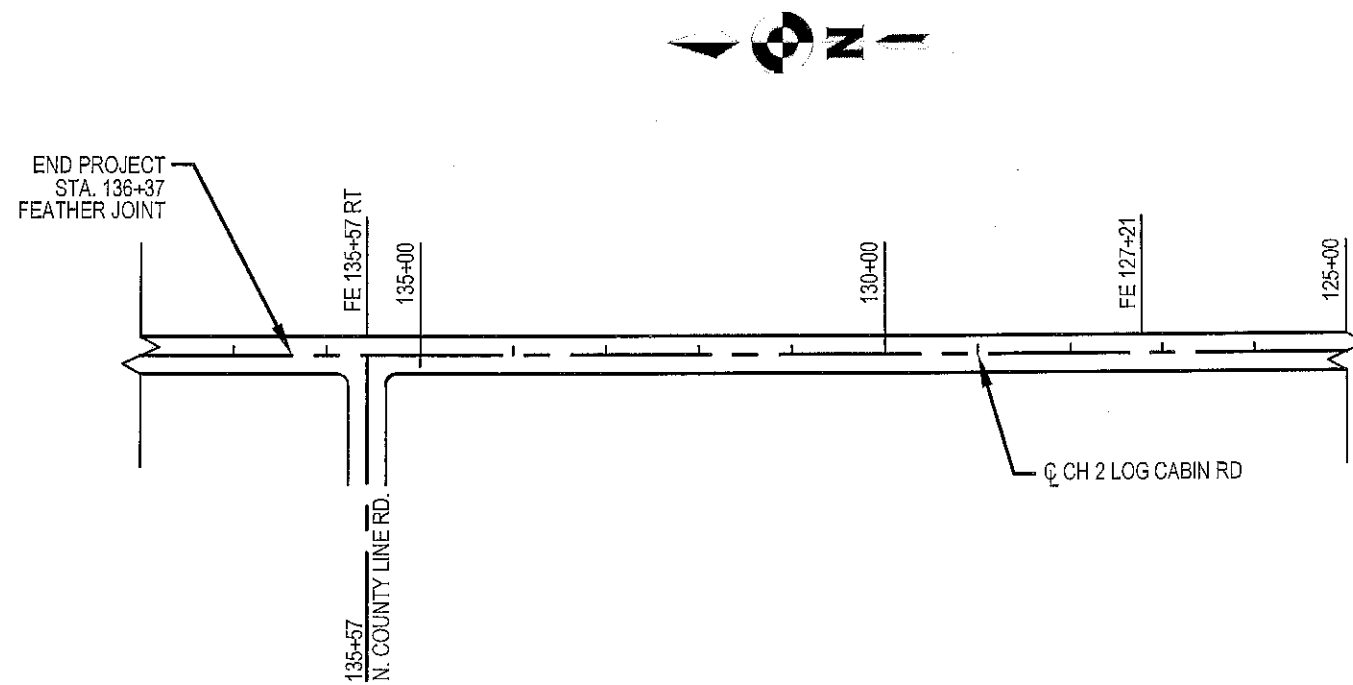
PLAN
STATION 50+00 TO 100+00

SCALE 1" = 200'

ROUTE	SECTION	COUNTY	SHEET NO.
CH 2	20-00189-00-RS	FRANKLIN	6 OF 6
CONTRACT 99690			



SCALE 1" = 200'



PLAN
STATION 100+00 TO 136+37