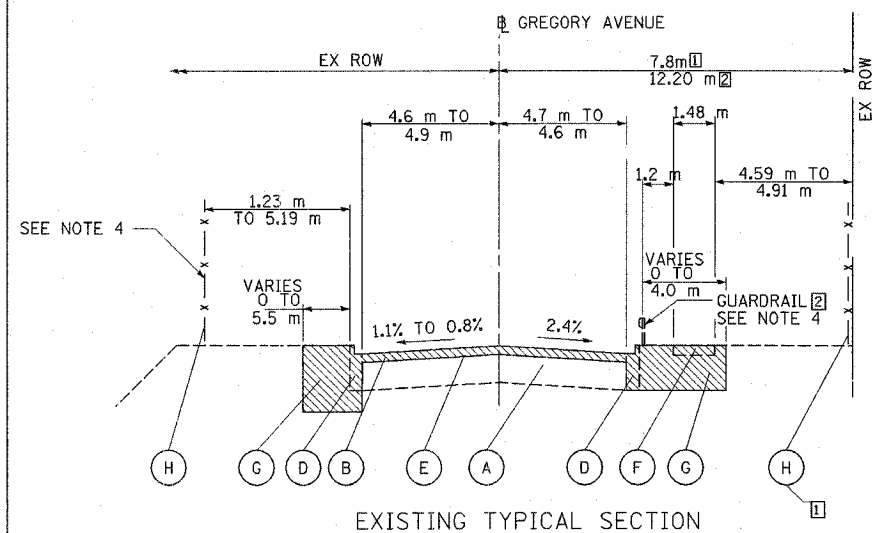
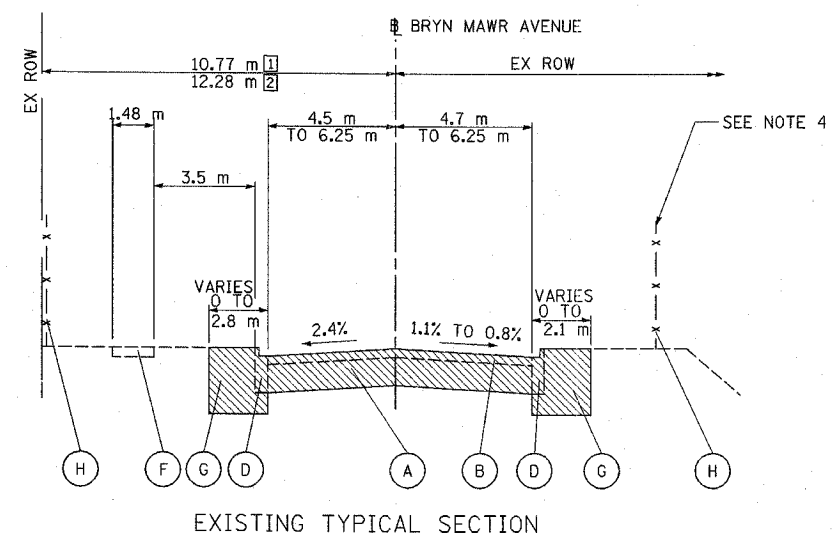


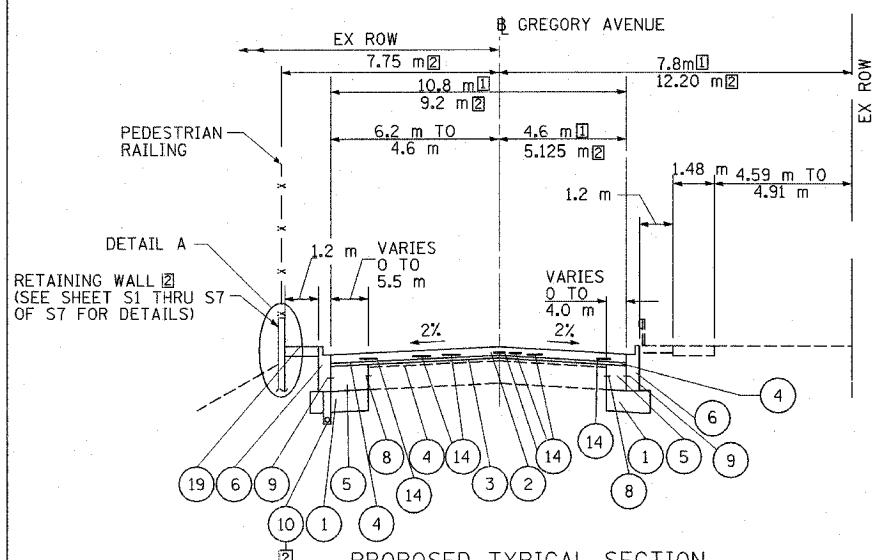
FAI RTE.	SECTION	COUNTY	TOTAL SHEETS	SHEET NO.
90	1314B	COOK	160	11
FED. ROAD DIST. NO.	ILLINOIS	FED. AID PROJECT	CONTRACT 60293	



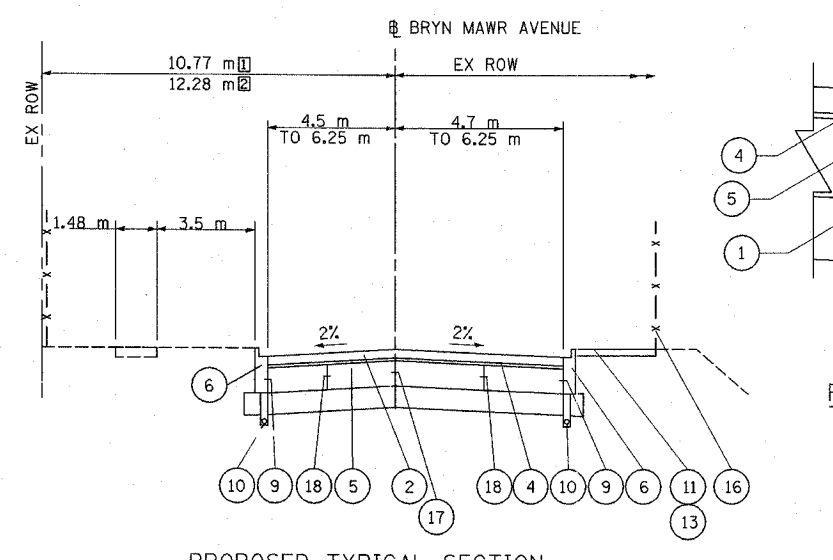
**EXISTING TYPICAL SECTION**  
GREGORY AVENUE  
STA. 4+474 TO STA. 4+489.60 [1]  
STA. 4+510 TO STA. 4+570 [2]



**EXISTING TYPICAL SECTION**  
BRYN MAWR AVENUE  
STA. 5+500.00 TO STA. 5+516.000 [1]  
STA. 6+032.5 TO STA. 6+054.5 [2]



**PROPOSED TYPICAL SECTION**  
GREGORY AVENUE  
STA. 4+473.60 TO STA. 4+489.60 [1]  
STA. 4+510 TO STA. 4+570 [2]

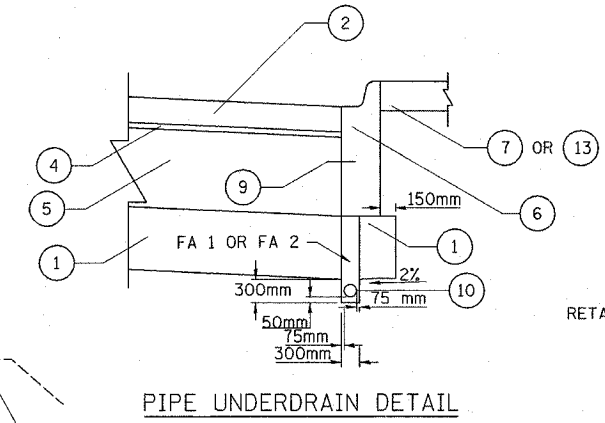


**PROPOSED TYPICAL SECTION**  
BRYN MAWR AVENUE  
STA. 5+500.00 TO STA. 5+516.000 [1]  
STA. 6+032.5 TO STA. 6+054.5 [2]

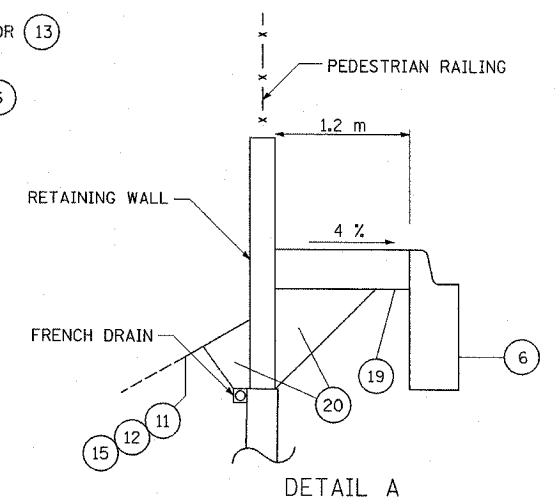
**BITUMINOUS MIX REQUIREMENTS**

AC TYPE	VOIDS	MAX. RAP
POLYMERIZED BITUMINOUS CONCRETE SURFACE COURSE, SUPERPAVE, MIX "F", N90	SBS/SBR PG 70-22 4% @ 90 GYR.	0%
BITUMINOUS CONCRETE BINDER COURSE, SUPERPAVE, IL-19, N90	SBS/SBR PG 70-22 4% @ 90 GYR.	0%
LEVELING BINDER (MACHINE METHOD), SUPERPAVE N70	PE 64-22 4% @ 70 GYR.	10%
BITUMINOUS REPLACEMENT OVER PATCHES	PG 64-22 4% @ 70 GYR.	15%
BIT SHOULDERS, SUPERPAVE 150mm AND 250mm	PG 58-22 2% @ 30 GYR.	50%

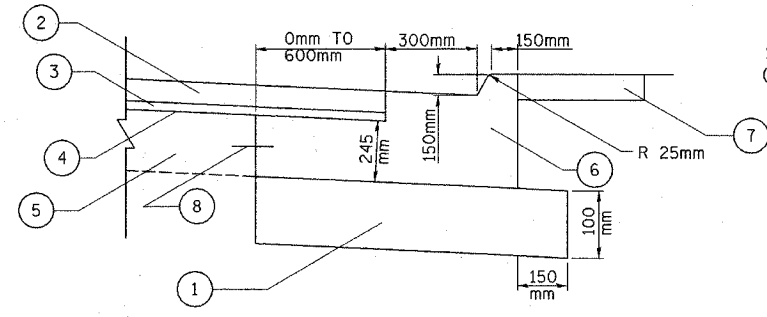
NOTE: THE UNIT WEIGHT USED FOR ALL BITUMINOUS SURFACE MIXTURES IS 59.8 KG/SQ M/25mm THICKNESS.



**PIPE UNDERDRAIN DETAIL**



**DETAIL A**  
RETAINING WALL  
STA. 4+523.291 TO STA. 4+567.234  
(SEE SHEETS S1 THROUGH S7 OF S7 FOR RETAINING WALL DETAILS)



**COMBINATION CONCRETE CURB AND GUTTER, TYPE B-15.30, SPECIAL DETAIL**  
(SEE NOTE 2)

NOTE:  
FOR NOTES, EXISTING AND PROPOSED LEGENDS SEE SHEET NO. 10.

REVISIONS	
NAME	DATE

**COLLINS ENGINEERS**  
123 N. WACKER DR., SUITE 300  
CHICAGO, IL 60606  
(312) 704-9300  
ILLINOIS PROFESSIONAL DESIGN FIRM  
LICENSE NO. 184-000993

ILLINOIS DEPARTMENT OF TRANSPORTATION  
TYPICAL SECTIONS  
BRYN MAWR AND GREGORY AVENUE  
F.A.I. 90 (I-90) AT NAGLE AVENUE  
SCALE: NTS  
DATE: DECEMBER 2004  
DRAWN BY: ML, DR, FD  
CHECKED BY: JMH, MDK