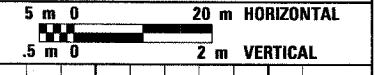
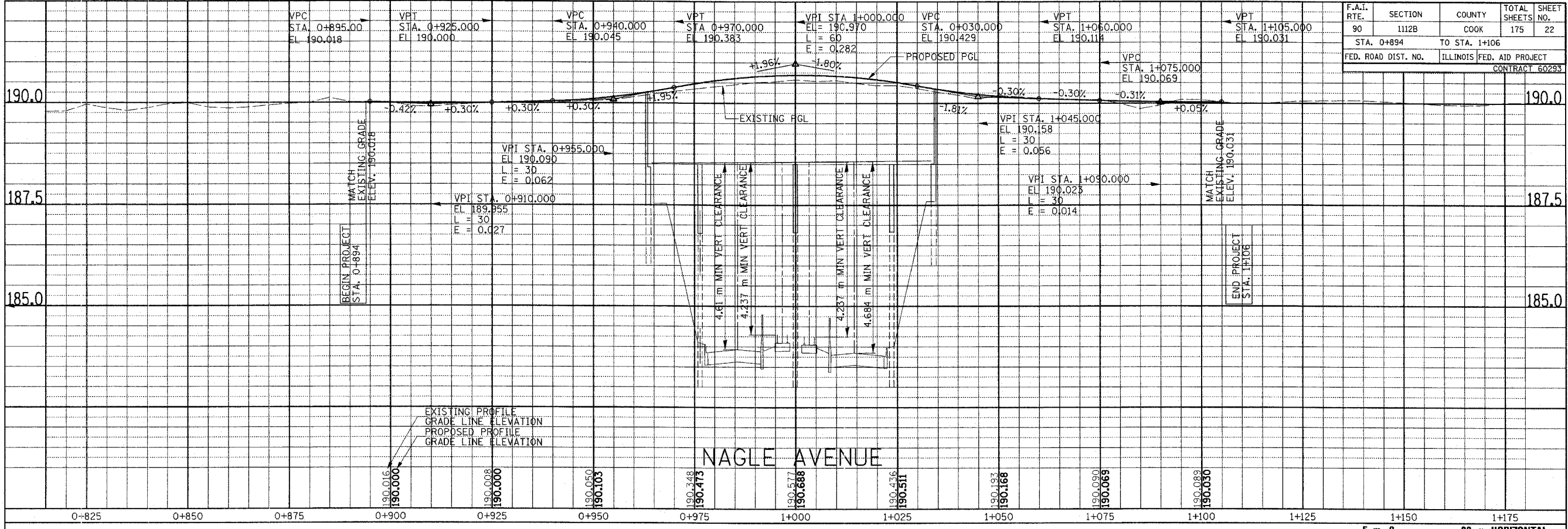
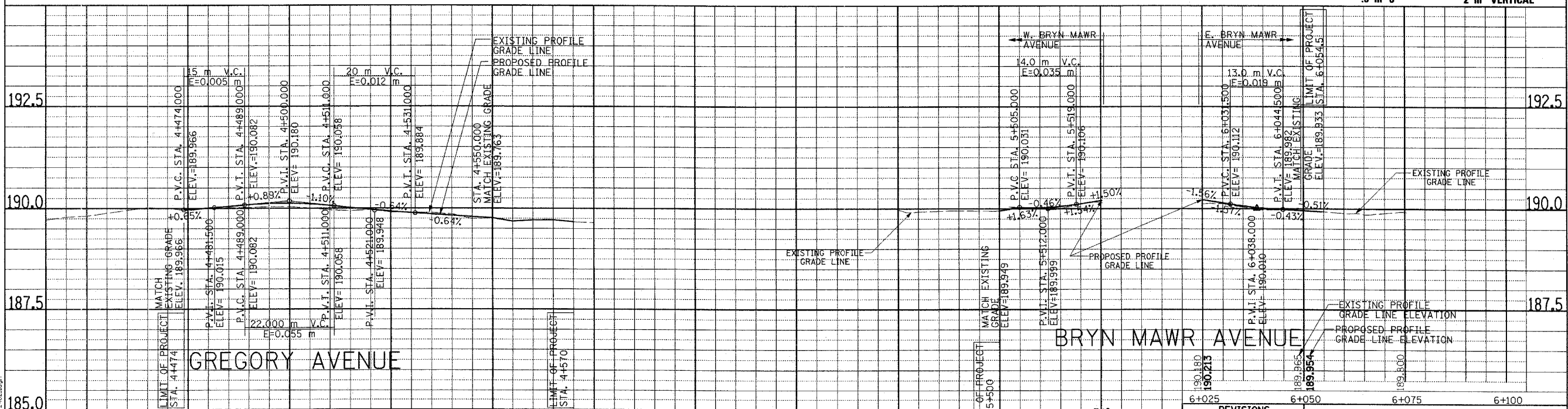


F.A.I. RTE.	SECTION	COUNTY	TOTAL SHEETS	SHEET NO.
90	1112B	COOK	175	22
STA. 0+894		TO STA. 1+106		
FED. ROAD DIST. NO.		ILLINOIS FED. AID PROJECT		
CONTRACT 60293				

FINAL SURVEYED	BY	DATE
SURVEY PLOTTED		
NOTE BOOK		
AREAS CHECKED		
NO.		



ORIGINAL SURVEYED	BY	DATE
SURVEY PLOTTED		
NOTE BOOK		
AREAS CHECKED		
NO.		



REVISIONS	
NAME	DATE

COLLINS ENGINEERS
 123 N. WACKER DR., SUITE 300
 CHICAGO, IL 60606
 (312) 764-5300
 ILLINOIS PROFESSIONAL DESIGN FIRM
 LICENSE NO. 184-000993

ILLINOIS DEPARTMENT OF TRANSPORTATION
 ROADWAY PROFILES
 NAGLE AVENUE, GREGORY AVENUE
 AND BRYN MAWR AVENUE
 DATE: DECEMBER 2004
 DRAWN BY: ML, DR, FD
 CHECKED BY: JMH

FILE G:\22\24\DWG\MEMPHIS\NAGLE\2724026.dgn