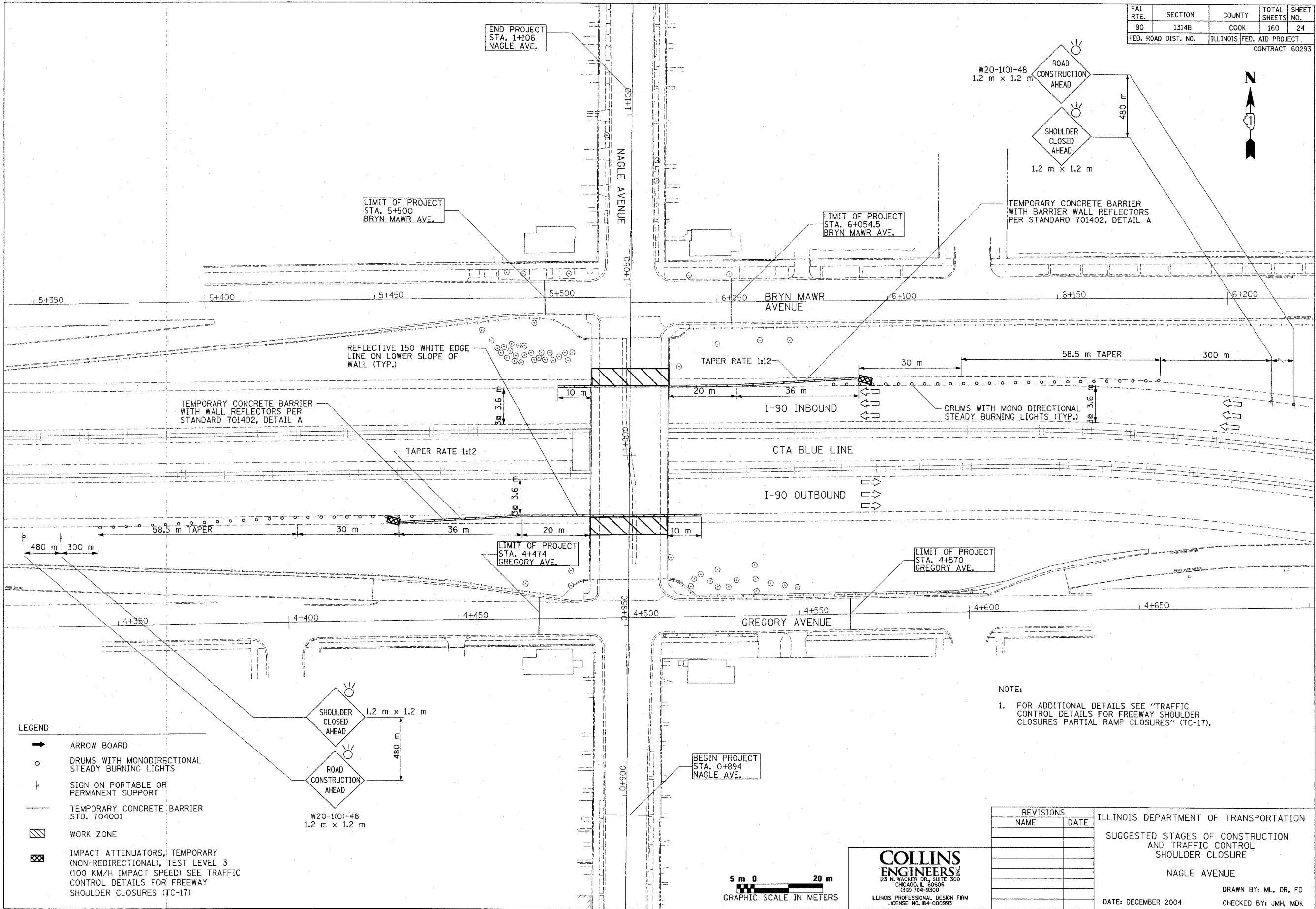


FAI RTE.	SECTION	COUNTY	TOTAL SHEETS	SHEET NO.
90	1314B	COOK	160	24
FED. ROAD DIST. NO.		ILLINOIS FED. AID PROJECT		
		CONTRACT 60293		



- LEGEND**
- ➔ ARROW BOARD
 - DRUMS WITH MONODIRECTIONAL STEADY BURNING LIGHTS
 - ⊥ SIGN ON PORTABLE OR PERMANENT SUPPORT
 - ▬ TEMPORARY CONCRETE BARRIER STD. 704001
 - ▨ WORK ZONE
 - ▣ IMPACT ATTENUATORS, TEMPORARY (NON-REDIRECTIONAL), TEST LEVEL 3 (100 KM/H IMPACT SPEED) SEE TRAFFIC CONTROL DETAILS FOR FREEWAY SHOULDER CLOSURES (TC-17)

NOTE:
 1. FOR ADDITIONAL DETAILS SEE "TRAFFIC CONTROL DETAILS FOR FREEWAY SHOULDER CLOSURES PARTIAL RAMP CLOSURES" (TC-17).

REVISIONS	
NAME	DATE

ILLINOIS DEPARTMENT OF TRANSPORTATION
 SUGGESTED STAGES OF CONSTRUCTION AND TRAFFIC CONTROL SHOULDER CLOSURE
 NAGLE AVENUE
 DRAWN BY: ML, DR, FD
 CHECKED BY: JMH, MDK
 DATE: DECEMBER 2004



COLLINS ENGINEERS
 123 N. WACKER DR., SUITE 300
 CHICAGO, IL 60606
 (312) 704-9300
 ILLINOIS PROFESSIONAL DESIGN FIRM
 LICENSE NO. 184-000993

FILE: G:\2724\CIVIL\EXHIBIT\NAGLE\2724018.dgn