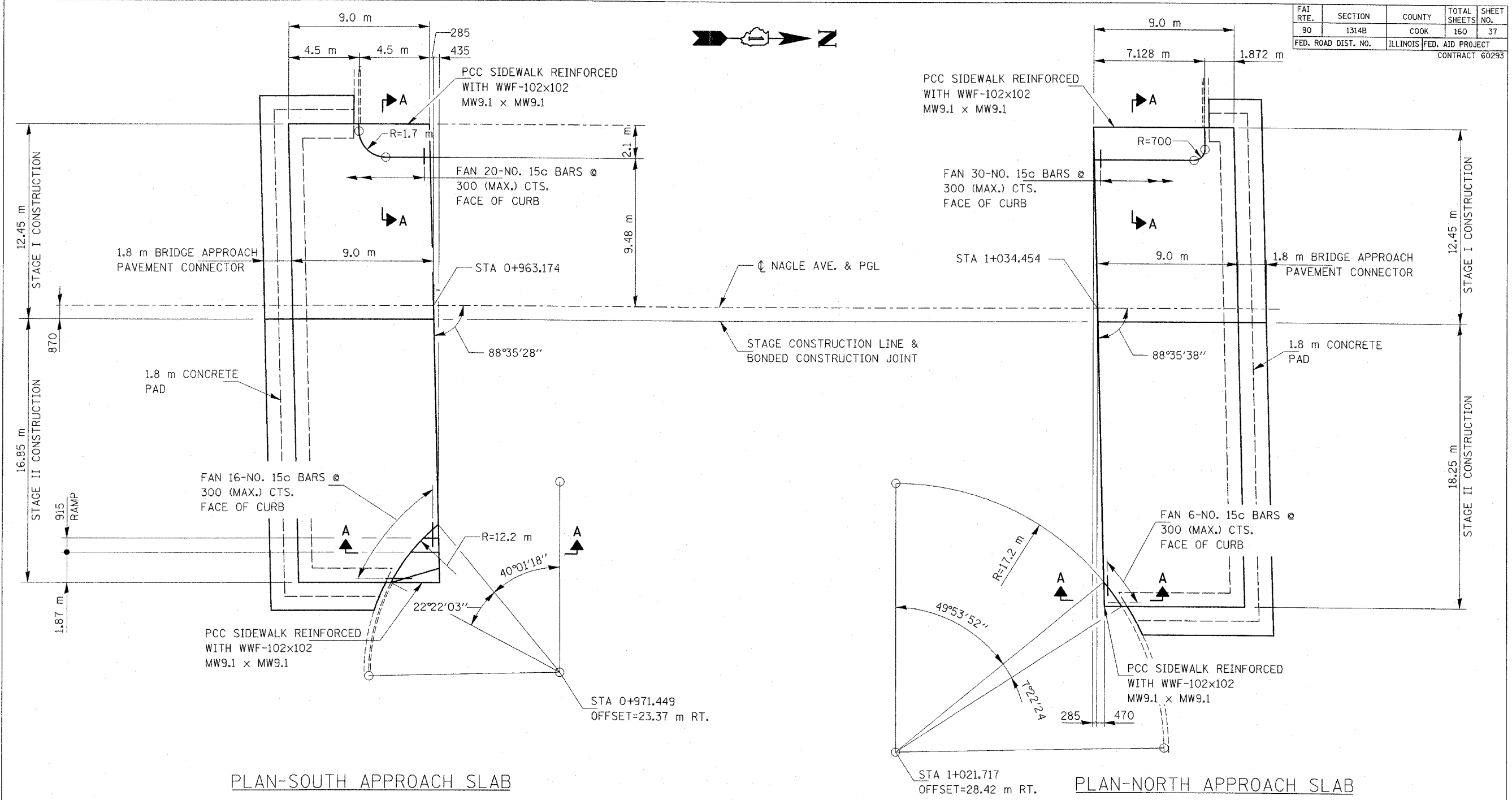


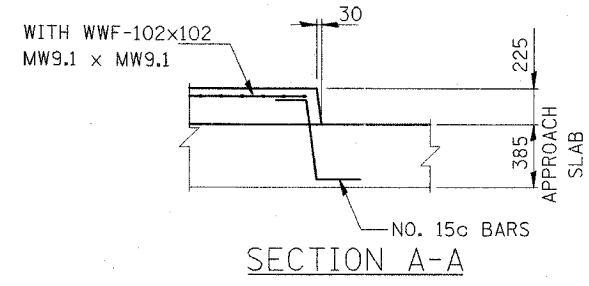
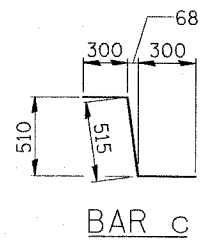
FAI RTE.	SECTION	COUNTY	TOTAL SHEETS	SHEET NO.
90	1314B	COOK	160	37
FED. ROAD DIST. NO.	ILLINOIS FED. AID PROJECT		CONTRACT 60293	



PLAN-SOUTH APPROACH SLAB

PLAN-NORTH APPROACH SLAB

NOTES:
 MANHOLES ARE NOT SHOWN FOR CLARITY SEE DRAINAGE DRAWINGS FOR LOCATIONS.
 FOR ADDITIONAL REINFORCEMENT AT MANHOLES SEE STANDARDS 420111 SHEETS 1 & 2.
 FOR ADDITIONAL APPROACH SLAB DETAILS SEE STANDARD 420401 EXCEPT AS NOTED.
 REINFORCEMENT SHOWN ON THIS SHEET SHALL SUPPLEMENT THE REINFORCEMENT SHOWN IN STANDARD 420401. REINFORCEMENT LENGTHS AND SPACINGS SHALL BE ADJUSTED AS REQUIRED.



REVISIONS	
NAME	DATE

ILLINOIS DEPARTMENT OF TRANSPORTATION
 BRIDGE APPROACH PAVEMENT DETAILS
 NAGLE AVENUE
 DRAWN BY: ML, DR, FD
 CHECKED BY: JMH, MOK
 DATE: DECEMBER 2004

COLLINS ENGINEERS
 123 N. WACKER DR., SUITE 300
 CHICAGO, IL 60606
 (312) 704-9300
 ILLINOIS PROFESSIONAL DESIGN FIRM
 LICENSE NO. 184-000993

FILE: G:\2724\CIVIL\EXHIBIT\NAGLE\2724039.dgn