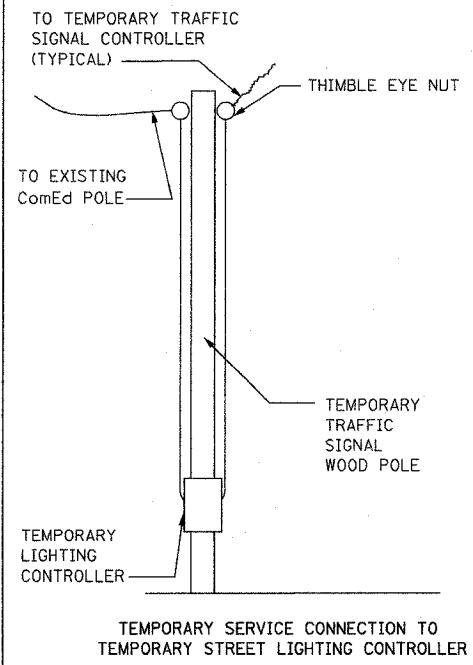
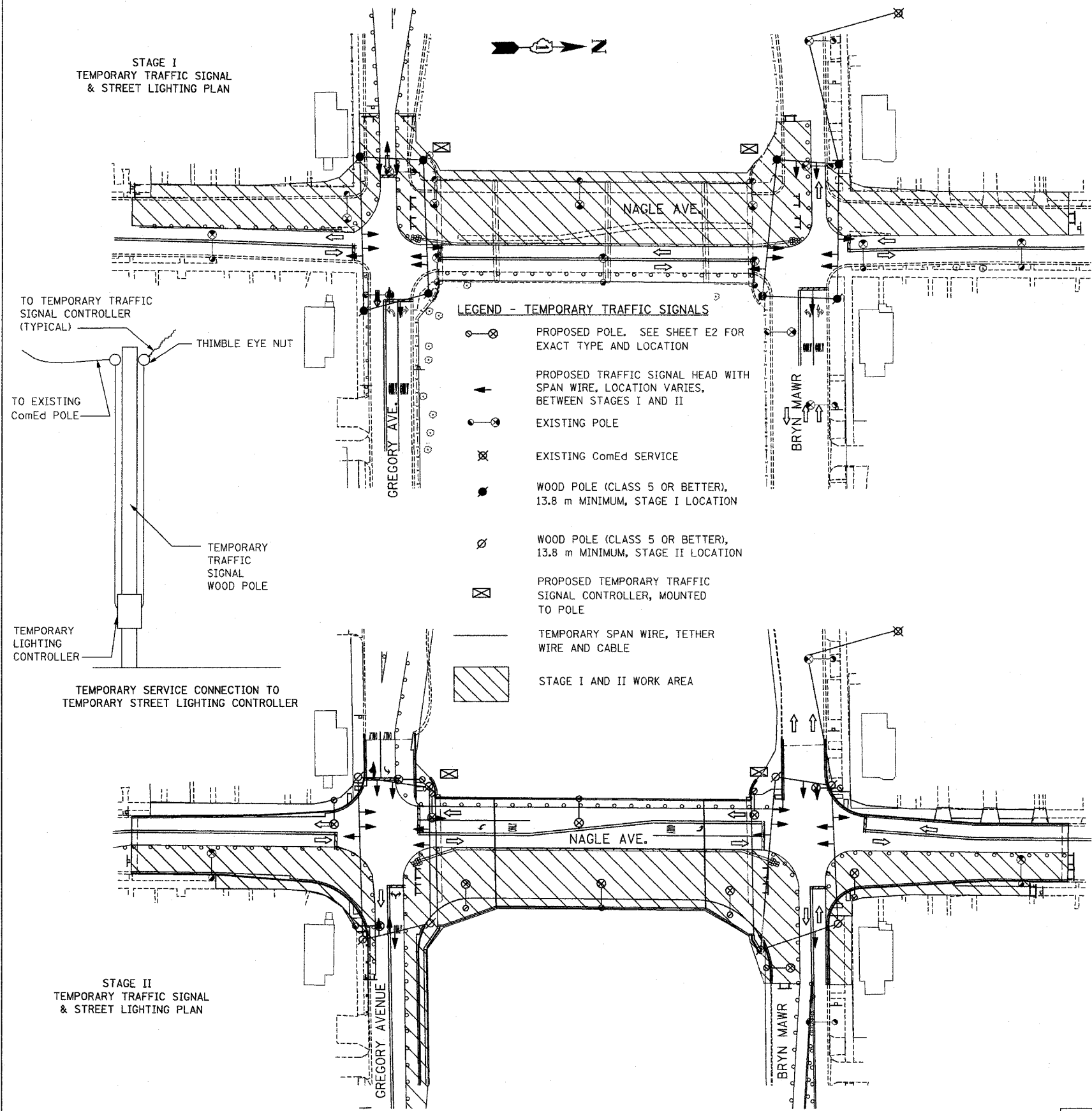


60293

FAI RTE.	SECTION	COUNTY	TOTAL SHEETS	SHEET NO.
90	1314B	COOK	100	45
FED. ROAD DIST. NO.	ILLINOIS FED. AID PROJECT			

STAGE I
TEMPORARY TRAFFIC SIGNAL
& STREET LIGHTING PLAN



- LEGEND - TEMPORARY TRAFFIC SIGNALS**
- PROPOSED POLE. SEE SHEET E2 FOR EXACT TYPE AND LOCATION
 - ▲ PROPOSED TRAFFIC SIGNAL HEAD WITH SPAN WIRE, LOCATION VARIES, BETWEEN STAGES I AND II
 - EXISTING POLE
 - ⊗ EXISTING ComEd SERVICE
 - WOOD POLE (CLASS 5 OR BETTER), 13.8 m MINIMUM, STAGE I LOCATION
 - WOOD POLE (CLASS 5 OR BETTER), 13.8 m MINIMUM, STAGE II LOCATION
 - ⊗ PROPOSED TEMPORARY TRAFFIC SIGNAL CONTROLLER, MOUNTED TO POLE
 - TEMPORARY SPAN WIRE, TETHER WIRE AND CABLE
 - ▨ STAGE I AND II WORK AREA

STAGE II
TEMPORARY TRAFFIC SIGNAL
& STREET LIGHTING PLAN

NOTES:

1. THE CONTRACTOR SHALL OBTAIN ELECTRICAL SERVICE FOR THE TEMPORARY TRAFFIC SIGNAL CONTROLLER VIA THE TEMPORARY STREET LIGHTING CONTROLLER. EXTRA PRECAUTION MUST BE TAKEN WHEN PLACING STRAPS, MOUNTING CONDUIT AND RUNNING CABLE. THE CONTRACTOR SHALL PROVIDE ALL NECESSARY EQUIPMENT, TOOLS, AND DEVICES REQUIRED FOR PROPER SERVICE CONNECTIONS. ANY DAMAGES TO THE EXISTING CONTROLLERS OR OTHER EQUIPMENT SHALL BE REPAIRED OR REPLACED BY THE CONTRACTOR AT HIS EXPENSE. ALL TEMPORARY SERVICE AND CONNECTIONS SHALL BE INCLUDED IN THE CONTRACT UNIT PRICE PER EACH FOR "TEMPORARY TRAFFIC SIGNAL INSTALLATION."
2. THE CONTRACTOR SHALL UTILIZE THE EXISTING STREET LIGHTING TEMPORARILY DURING STAGE I CONSTRUCTION. PROVIDE AERIAL CABLES, SECONDARY RACKS, SPLICE KITS, ETC., AS REQUIRED TO CONTINUE THE EXISTING LIGHTING CIRCUIT AS SHOWN TO THE NEARBY FIXTURES. ALL TEMPORARY STREET LIGHTING SERVICES, FIELD INVESTIGATIONS, CONNECTIONS, POLES, CABLES ETC. SHALL BE PAID FOR AS PART OF THE CONTRACT UNIT PRICE PER LUMP SUM FOR "TEMPORARY STREET LIGHTING INSTALLATION."
3. DURING STAGE II CONSTRUCTION, THE CONTRACTOR SHALL UTILIZE THE NEW STREET LIGHTS INSTALLED ON THE WEST SIDE OF THE BRIDGE. REARRANGEMENT OF TEMPORARY AERIAL WIRE AND CABLE MAY BE REQUIRED TO CONTINUE SERVICE TO ADJACENT STREET LIGHTING. ALL WORK SHALL BE PAID FOR UNDER THE CONTRACT UNIT PRICE PER EACH FOR "TEMPORARY STREET LIGHTING INSTALLATION."
4. THE CONTRACTOR SHALL PROVIDE ALL NECESSARY MATERIAL, EQUIPMENT, AND LABOR AS REQUIRED TO MAINTAIN POWER TO THE EXISTING STREET LIGHTING ADJACENT TO THE BRIDGE.
5. CONTRACTOR TO CLEAN-UP AND RESTORE AREA TO THE SATISFACTION OF THE RESIDENT ENGINEER. ALL WORK SHALL BE DONE IN A WORKMANSHIP MANNER. POLES SHALL BE STRAIGHT AND PLUMB. WIRES SHALL BE TRAINED AND TIED. THIS WORK SHALL BE INCLUDED IN THE CONTRACT UNIT PRICE FOR "TEMPORARY TRAFFIC SIGNAL INSTALLATION."

TEMPORARY TRAFFIC SIGNAL INSTALLATION BILL OF MATERIALS		
DESCRIPTION	UNITS	QUANTITY
WOOD POLES, CLASS 5, 13.8 m WITH GUY WIRE AND ANCHORS	EACH	8
ELECTRIC CABLE, AERIAL SUSPENDED SIGNAL NO. 14, 3C	METER	100
ELECTRIC CABLE, AERIAL SUSPENDED SIGNAL NO. 14, 5C	METER	700
ELECTRIC CABLE, AERIAL SUSPENDED SIGNAL NO. 14, 7C	METER	315
ELECTRIC CABLE, AERIAL SUSPENDED POWER NO. 2, 2C	METER	500
TEMPORARY TRAFFIC SIGNAL CONTROLLER	EACH	2
SIGNAL HEAD, 1 FACE, 3 SECTION, 305 mm LENSES	EACH	16
SIGNAL HEAD, 1 FACE, 4 SECTION, 305 mm LENSES	EACH	5
INTERNALLY ILLUMINATED SIGN	EACH	3

* ALL WORK SHALL BE PAID FOR UNDER THE CONTRACT UNIT PRICE PER EACH FOR "TEMPORARY TRAFFIC SIGNAL INSTALLATION"

G:\PROJECTS\JOB268\SIGNAL\NAGLE\TS-05.DGN

REVISIONS	
NAME	DATE

ILLINOIS DEPARTMENT OF TRANSPORTATION
NAGLE AVE. OVER FAI-90
(KENNEDY EXPY)
TEMPORARY TRAFFIC SIGNAL
AND STREET LIGHTING PLAN

SCALE: NONE
DATE: DEC 2004

DRAWN BY: CBR
CHECKED BY: DS

K&E KAM ENGINEERING, INC.
CONSULTING ENGINEERS
707A Davis Road, Suite 205
Eglin, Illinois 60123-1369

TS-5