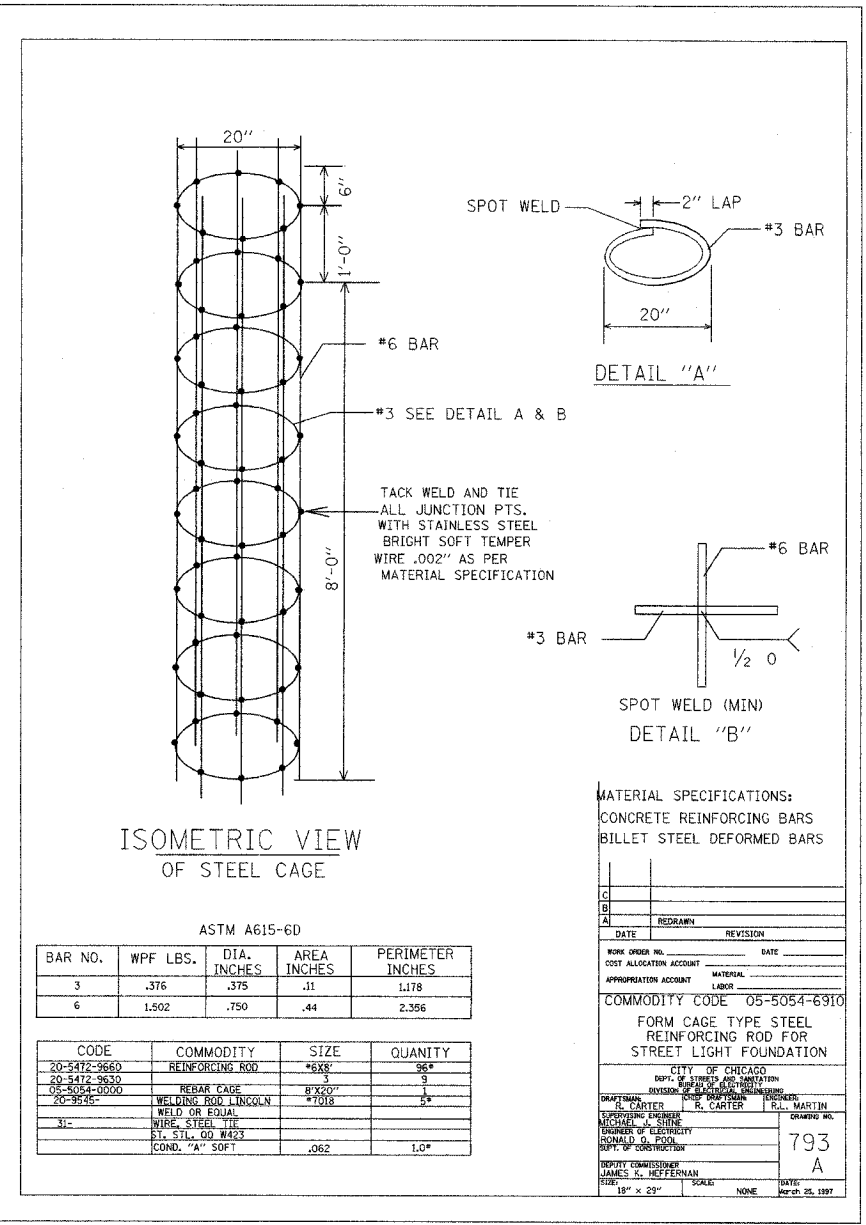
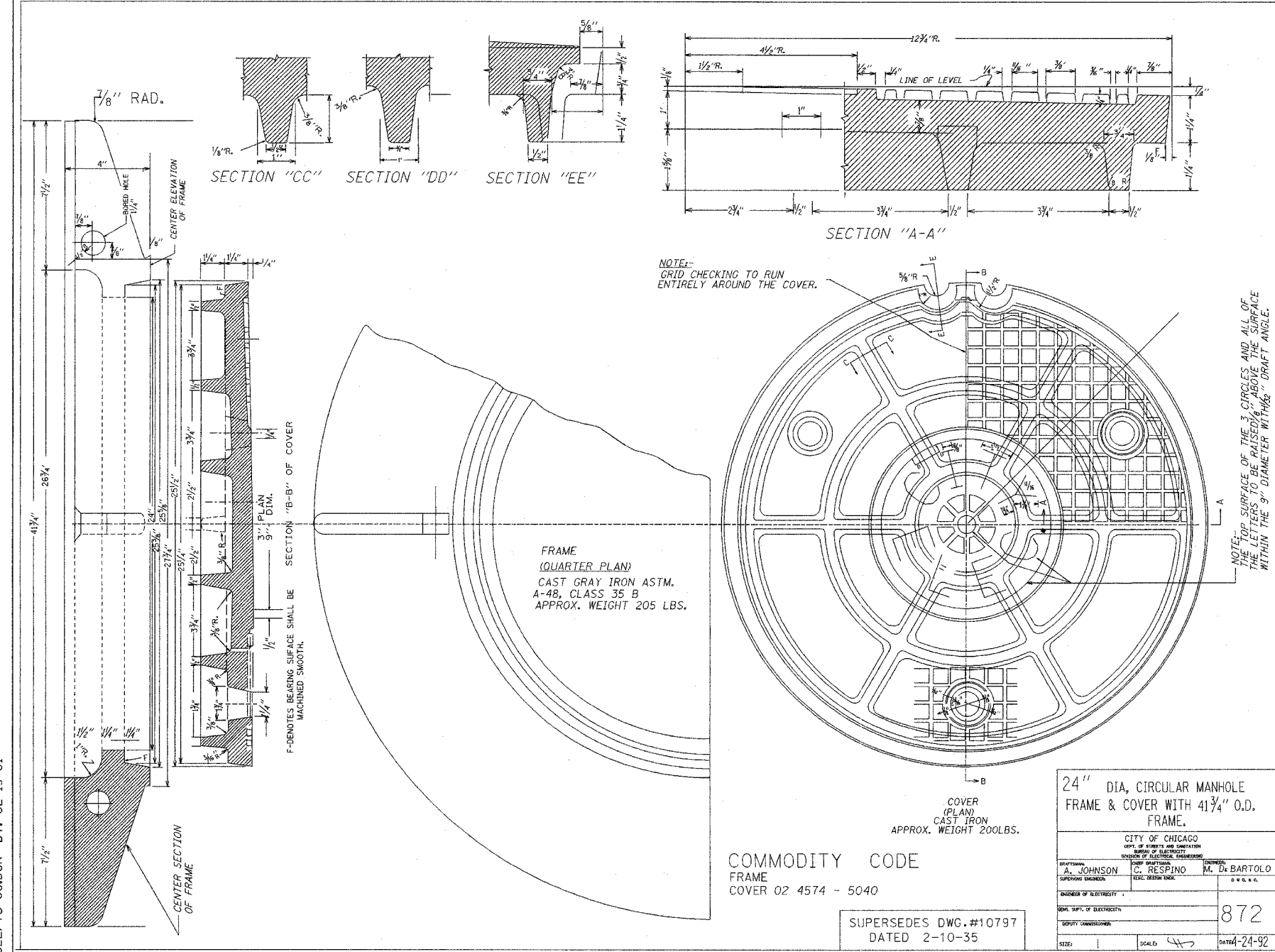


FBI RTE.	SECTION 1314B	COUNTY	TOTAL SHEETS	SHEET NO.
90		COOK	160	48
FED. ROAD DIST. NO.	ILLINOIS FED. AID PROJECT			



ASTM A615-6D

BAR NO.	WPF LBS.	DIA. INCHES	AREA INCHES	PERIMETER INCHES
3	.376	.375	.11	1.178
6	1.502	.750	.44	2.356

CODE	COMMODITY	SIZE	QUANTITY
20-2472-9880	REINFORCING ROD	#6X8'	96*
20-2472-9830		3	3
08-8054-0900	REBAR CAGE	8'X20'	3
20-9516	WELDING ROD LINCOLN	#7018	5*
31-	WIRE, STEEL TIE		
	ST. SIL. CO. #423		
	COND. "A" SOFT	.062	1.0*

MATERIAL SPECIFICATIONS:  
CONCRETE REINFORCING BARS  
BILLET STEEL DEFORMED BARS

DATE	REVISION

WORK ORDER NO. \_\_\_\_\_ DATE \_\_\_\_\_  
COST ALLOCATION ACCOUNT \_\_\_\_\_ MATERIAL \_\_\_\_\_  
APPROPRIATION ACCOUNT \_\_\_\_\_ LABOR \_\_\_\_\_  
COMMODITY CODE 05-5054-6910  
FORM CAGE TYPE STEEL REINFORCING ROD FOR STREET LIGHT FOUNDATION

CITY OF CHICAGO  
DEPT. OF STREET LIGHTS AND TRAFFIC SIGNALS  
DIVISION OF ELECTRICAL ENGINEERING  
DRAWN BY: R. CARTER  
CHECKED BY: R. L. MARTIN  
DESIGNED BY: MICHAEL A. SHINE  
IN CHARGE OF ELECTRICAL: RONALD G. POOL  
DEPT. OF CONSTRUCTION  
CITY COMMISSIONER: JAMES K. HEFFERNAN  
SCALE: NONE  
DATE: DEC 25 1997

G:\PROJECTS\JOB268\SIGNAL\NAGLE\TS-08.DGN DT. 02-19-01

COMMODITY CODE  
FRAME  
COVER 02 4574 - 5040

SUPERSEDES DWG.#10797  
DATED 2-10-35

24" DIA. CIRCULAR MANHOLE  
FRAME & COVER WITH 4 1/4" O.D.  
FRAME.

CITY OF CHICAGO  
DEPT. OF STREET LIGHTS AND TRAFFIC SIGNALS  
DIVISION OF ELECTRICAL ENGINEERING

DESIGNED BY: A. JOHNSON  
CHECKED BY: C. RESPINO  
IN CHARGE OF ELECTRICAL: M. DE BARTOLO

NO. OF SHEETS: 1  
SCALE: NONE  
DATE: 4-24-92

REVISIONS	
NAME	DATE

ILLINOIS DEPARTMENT OF TRANSPORTATION  
NAGLE AVENUE OVER FAI-90  
(KENNEDY EXPY)  
CITY OF CHICAGO  
STANDARD TRAFFIC SIGNAL  
DETAILS

SCALE: NONE  
DATE: DEC 2004  
DRAWN BY: AMP  
CHECKED BY: DS