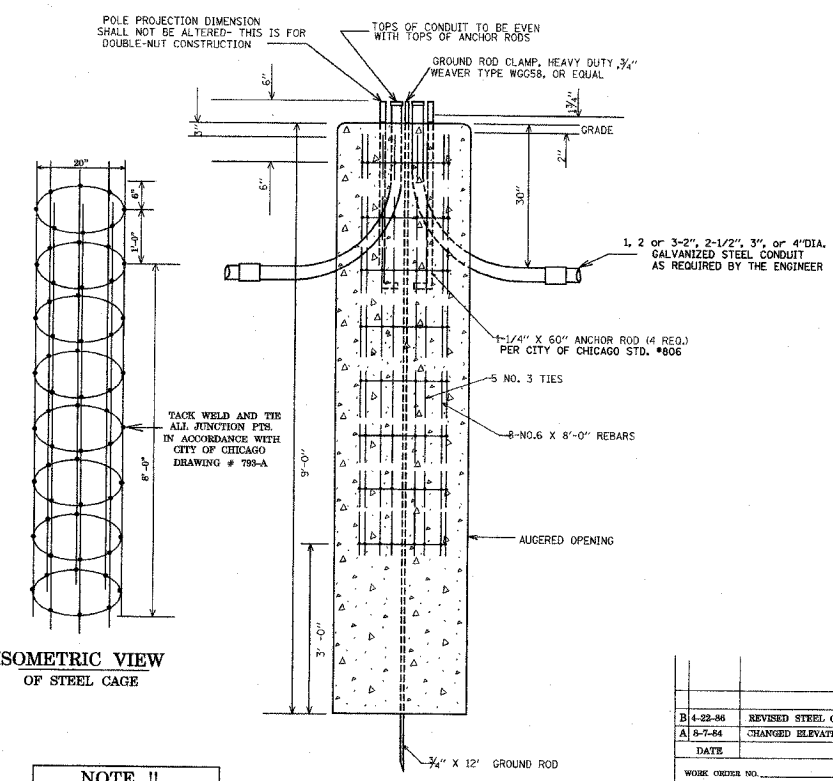
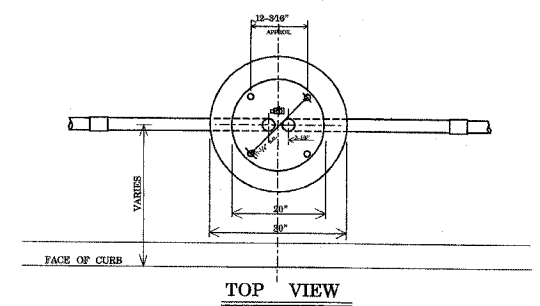


60293

FAI RTE.	SECTION	COUNTY	TOTAL SHEETS	SHEET NO.
90	1314B	COOK	160	54
FED. ROAD DIST. NO.		ILLINOIS FED. AID PROJECT		

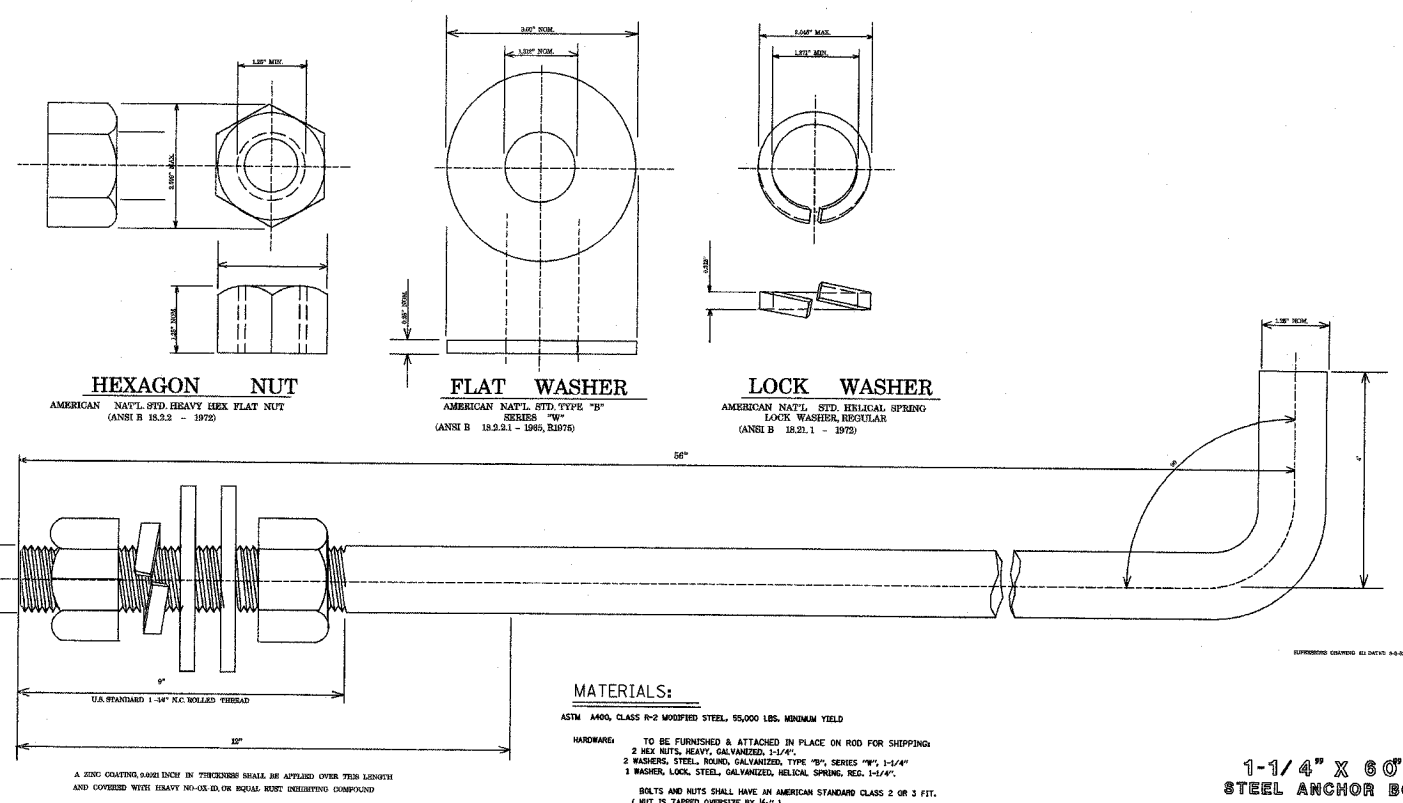


ISOMETRIC VIEW OF STEEL CAGE

NOTE !!
HOLE FOR FOUNDATION MUST BE AUGERED IN UNDISTURBED SOIL

CODE	COMMODITY	SIZE	QUANTITY
05-3267-2940	REDI-MIX CONCRETE	CU. YD.	1.65
09-4001-	ELBOW, LARGE RADIUS	2", 2-1/2", 3", 4"	AS REQUIRED
37-8180-0200	ANCHOR ROD	1-1/4" X 60"	4
05-5054-6910	RE-BAR CAGE	20" X 8'-0"	1
09-7796	GROUND ROD	3/4" X 12'-0"	1
09-2636-	GROUND ROD CLAMP	3/4"	1
	GROUND BUSHING	2", 2-1/2", 3", 4"	AS REQUIRED

B 4-23-56	REVISED STEEL CAGE
A 6-7-84	CHANGED ELEVATIONS OF TAPS ON ELBOWS
	DATE REVISION
WORK ORDER NO.	DATE
COST ALLOCATION ACCOUNT	MATERIAL
APPROPRIATION ACCOUNT	LABOR
FOUNDATION FOR 34'-6" ANCHOR BASE POLE WITH 17-1/4" BOLT CIRCLE OR STRAIN BALLAST HOUSING BASE	
CITY OF CHICAGO DEPT. OF STREETS AND SANITATION BUREAU OF ELECTRICITY DIVISION OF ELECTRICITY	
DRAWINGMAN R. CARTER	ENGINEER M. J. SHINE
SUPERVISING ENGINEER MICHAEL J. SHINE	DRAWING NO. 816
ENGINEER OF ELECTRICITY RONALD Q. POOL	DATE March 6, 1996
SECT. OF CONSTRUCTION JAMES K. HEFFERNAN	SCALE NONE
RES. 1/8" x 20"	



MATERIALS:
ASTM A490 CLASS F-2 MODIFIED STEEL, 55,000 LBS. MINIMUM YIELD
HARDWARE TO BE FURNISHED & ATTACHED IN PLACE ON ROD FOR SHIPPING:
2 HEX NUTS, HEAVY, GALVANIZED, 1-1/4"
2 WASHERS, STEEL, ROUND, GALVANIZED, TYPE "B", SERIES "B", 1-1/4"
1 WASHER, LOCK, STEEL, GALVANIZED, HELICAL SPRING, RES. 1-1/4"
BOLTS AND NUTS SHALL HAVE AN AMERICAN STANDARD CLASS 2 OR 3 FIT.
(NUT IS TAPPED OVERSIZE BY 1/16")

1-1/4" X 60" STEEL ANCHOR BOLT
COMMODITY CODE # ST - 880 - 020

G:/PROJECTS/JOB268/SIGNAL/NAGLE/TS-14.DGN DT. 02-19-01

811

TS-14

REVISIONS		ILLINOIS DEPARTMENT OF TRANSPORTATION NAGLE AVENUE OVER FAI-90 (KENNEDY EXPY) CITY OF CHICAGO STANDARD TRAFFIC SIGNAL DETAILS
NAME	DATE	
		SCALE: NONE
		DATE: DEC 2004
		DRAWN BY: RSV
		CHECKED BY: DS