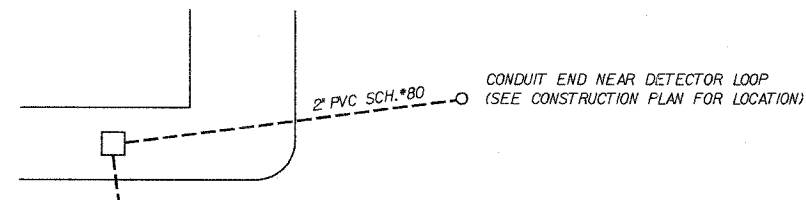
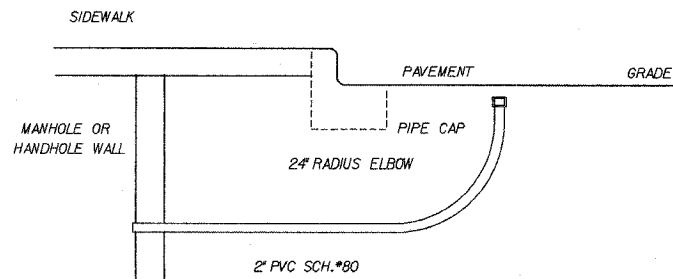


FBI	SECTION	COUNTY	TOTAL SHEETS	SHEET NO.
90	1314B	COOK	160	56
FED. ROAD DIST. NO.		ILLINOIS FED. AID PROJECT		

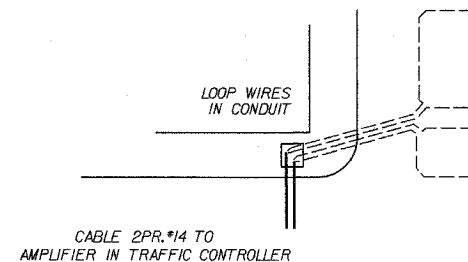
60293



TYPICAL LAYOUT OF CONDUIT LEAD UP TO NEAR VEHICLE DETECTOR LOOPS



TYPICAL SECTION ALONG CONDUIT LEAD UP TO NEAR VEHICLE DETECTOR LOOPS



THE SIZE OF LOOP SHALL BE AS SHOWN ON THE PLANS AND THE NUMBER OF TURNS SHALL BE AS RECOMMENDED BY THE MANUFACTURER OF THE RELATED INDUCTION LOOP DETECTOR AMPLIFIER.

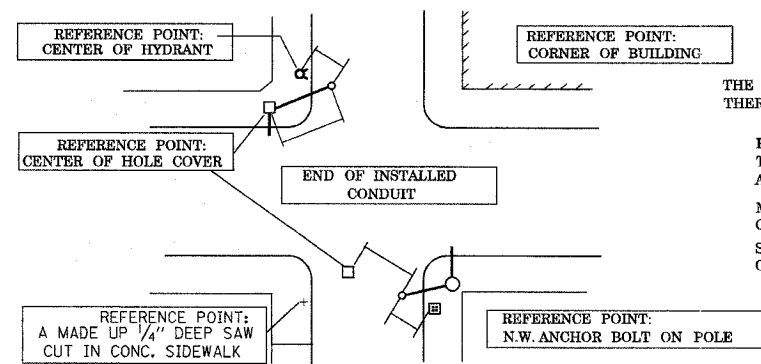
LOOP INSTALLATION NOTES

THE SAW CUT (1/4" WIDE) SHALL BE CONTINUOUS FROM EDGE OF THE DETECTOR LOOP TO AND THROUGH ONE SIDE OF THE PVC FLOW
 AFTER THE LOOP WIRE AND RETAINERS ARE INSTALLED THE SAW CUTTHROUGH THE SIDE OF THE PIPE ELBOW BE PLUGGED WITH A PLIABLE PUTTY TO PREVENT THE ENTRANCE OF THE LIQUID EPOXY LOOP SEALER.
 THE LOOP WIRE TO BE SPLICED TO SHEILDED LEAD CABLE IN MH OR HH IN ACCORDANCE WITH PROCEDURE EXPLAINED IN SPECIAL PROVISION FOR DETECTOR LOOP'S CONSTRUCTION SPECIFICATIONS.

THE CONDUIT INSTALLATION NOTES

INSTALL 2" PVC SCH #80 CONDUIT BELOW GRADE FROM MHHH TO NEAR THE LOCATION OF END OF THE CONDUIT LEAD AS SHOWN ON PLAN.
 INSTALL 24" RADIUS ELBOW AT END OF THE CONDUIT AS SHOWN, KEEP END OF THE ELBOW ABOUT 3" BELOW GRADE AND INSTALL PIPE CAP ON IT.
 FOREMAN TO TAKE EXACT MEASUREMENTS FROM CENTER OF THE PIPE CAP TO THREE REFERENCE POINTS. (THE CORNER OF A BUILDING, CENTER OF A FIRE HYDRANT, CENTER OF A MANHOLE COVER ETC. (AS ILLUSTRATED BELOW OR CALL ENGINEER.

ILLUSTRATION OF TAKING MEASUREMENTS LOCATING THE CONDUIT END



THE END OF CONDUIT WILL BE 3" BELOW PAVEMENT SURFACE THEREFORE TO ACCURATELY LOCATE THE HIDDEN END OF CONDUIT

PRIOR COVERING UP THE CAP OF CONDUIT END, SELECT THREE REFERENCE POINTS IN DIFFERENT DIRECTIONS AROUND THE CONDUIT END.

MEASURE EXACT DISTANCES BETWEEN CENTER OF THE CONDUIT END AND THE REFERENCE POINTS.
 SUBMIT A SKETCH SHOWING THE MEASUREMENTS TO OFFICE FOR RECORD.

INSTALLATION OF 2" PVC CONDUIT UP TO THE VEHICLE DETECTOR LOOP

905

G:\PROJECTS\JOB268\SIGNAL\NAGLE\TS-16.DGN

TS-16

REVISIONS		ILLINOIS DEPARTMENT OF TRANSPORTATION NAGLE AVENUE OVER FAI-90 (KENNEDY EXPY) CITY OF CHICAGO INSTALLATION PVC CONDUIT UP TO THE VEHICLE DETECTOR LOOP
NAME	DATE	
		SCALE: NONE
		DATE: DEC 2004
		DRAWN BY: RSV
		CHECKED BY: DS