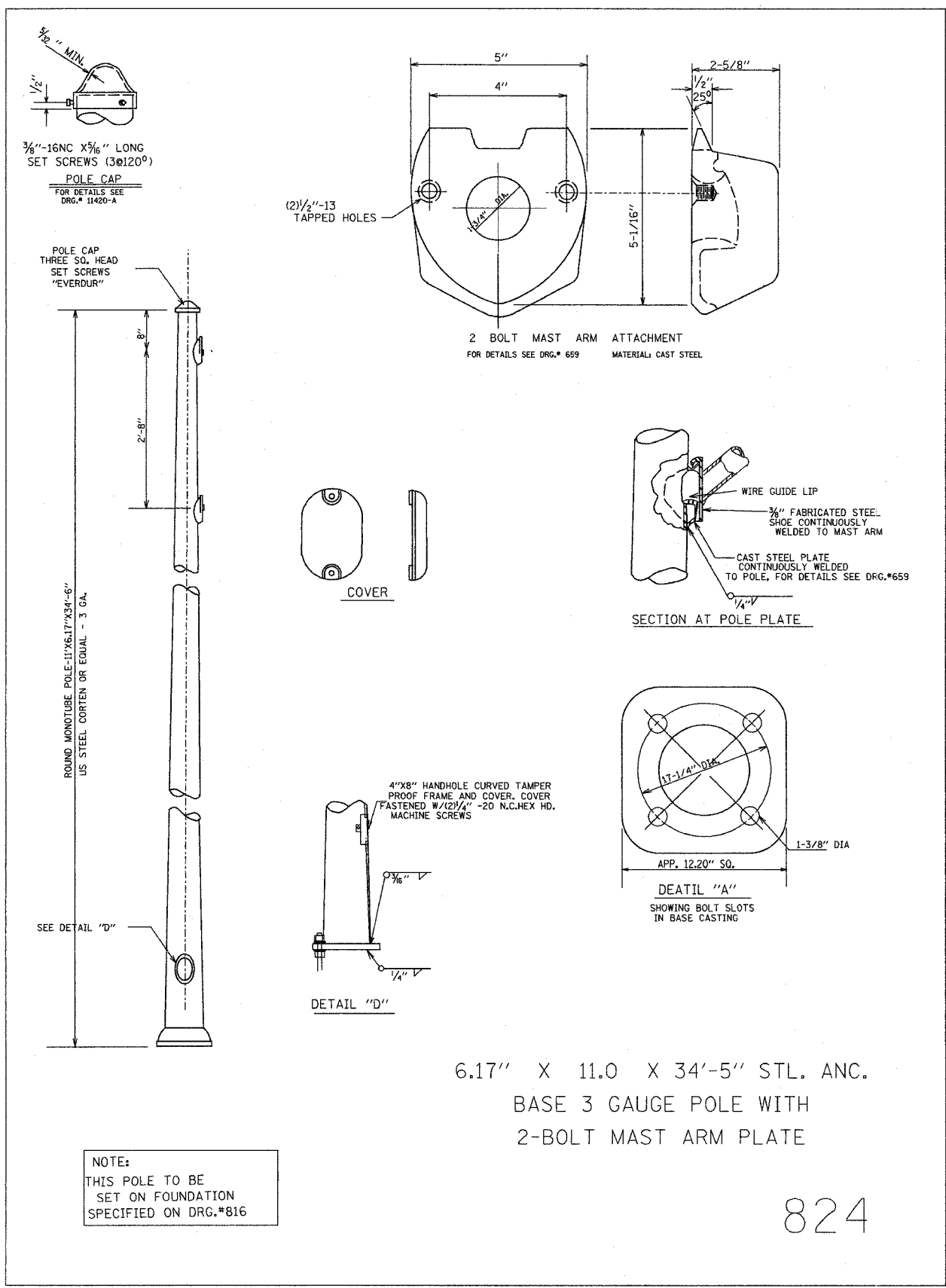
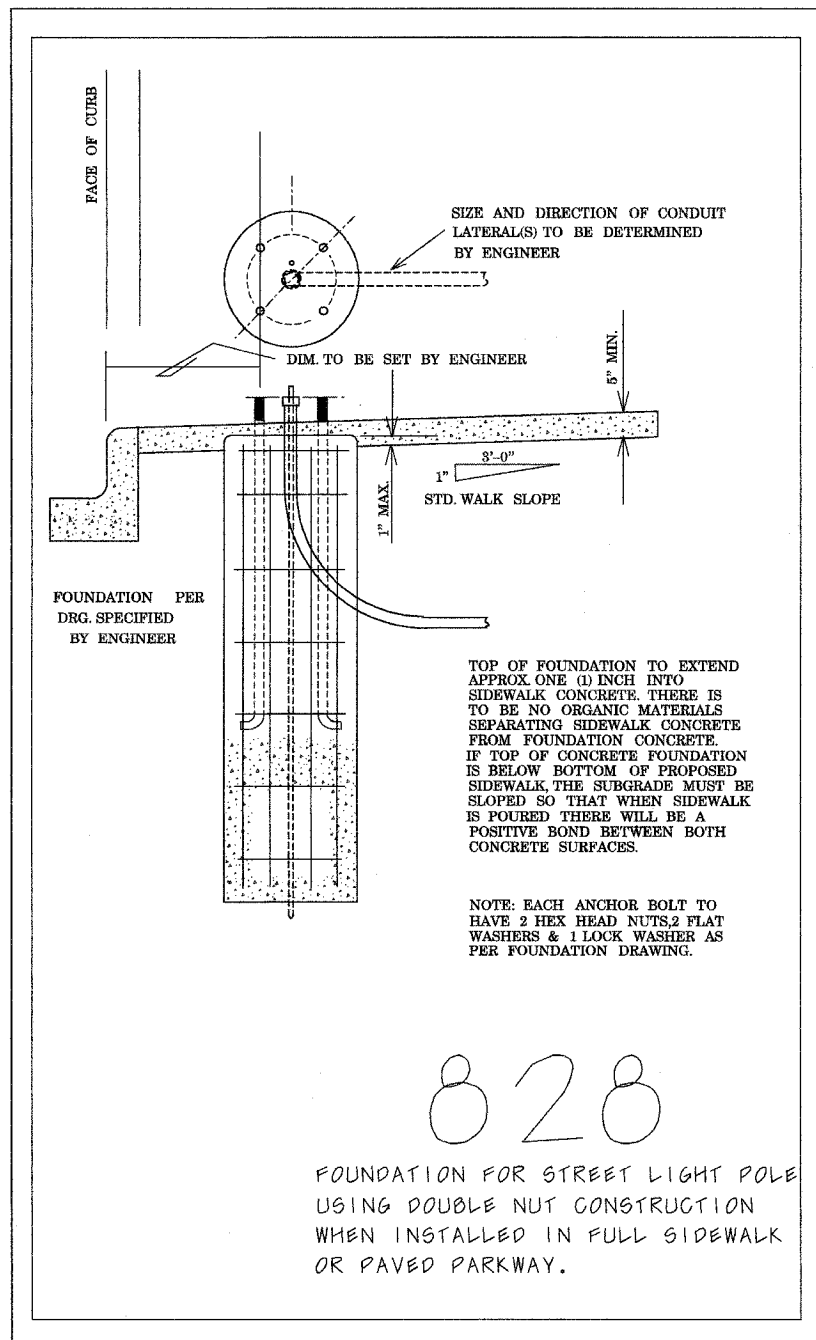


FBI RTE.	SECTION	COUNTY	TOTAL SHEETS	SHEET NO.
90	1314B	COOK	100	62
FED. ROAD DIST. NO.		ILLINOIS FED. AID PROJECT		



824



828

G:/PROJECTS/JOB268/SIGNAL/NAGLE/TS-22.DGN

REVISIONS	
NAME	DATE

ILLINOIS DEPARTMENT OF TRANSPORTATION  
NAGLE AVENUE OVER FAI-90  
(KENNEDY EXPY)  
CITY OF CHICAGO

STANDARD TRAFFIC SIGNAL DETAILS

SCALE: NONE DRAWN BY: CBR  
DATE: DEC 2004 CHECKED BY: DS