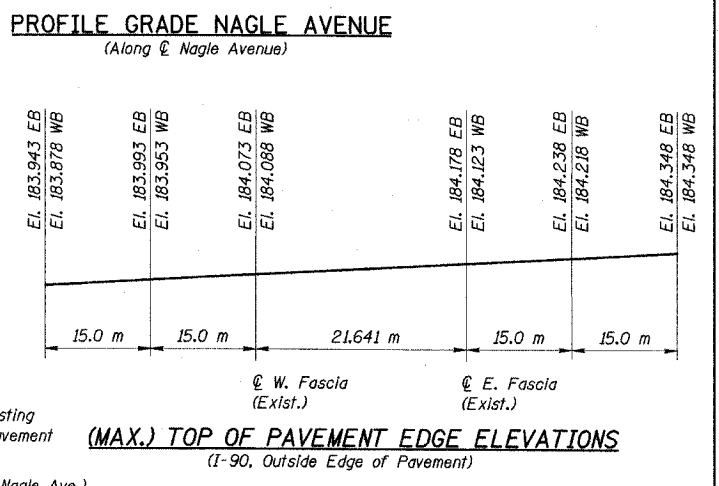
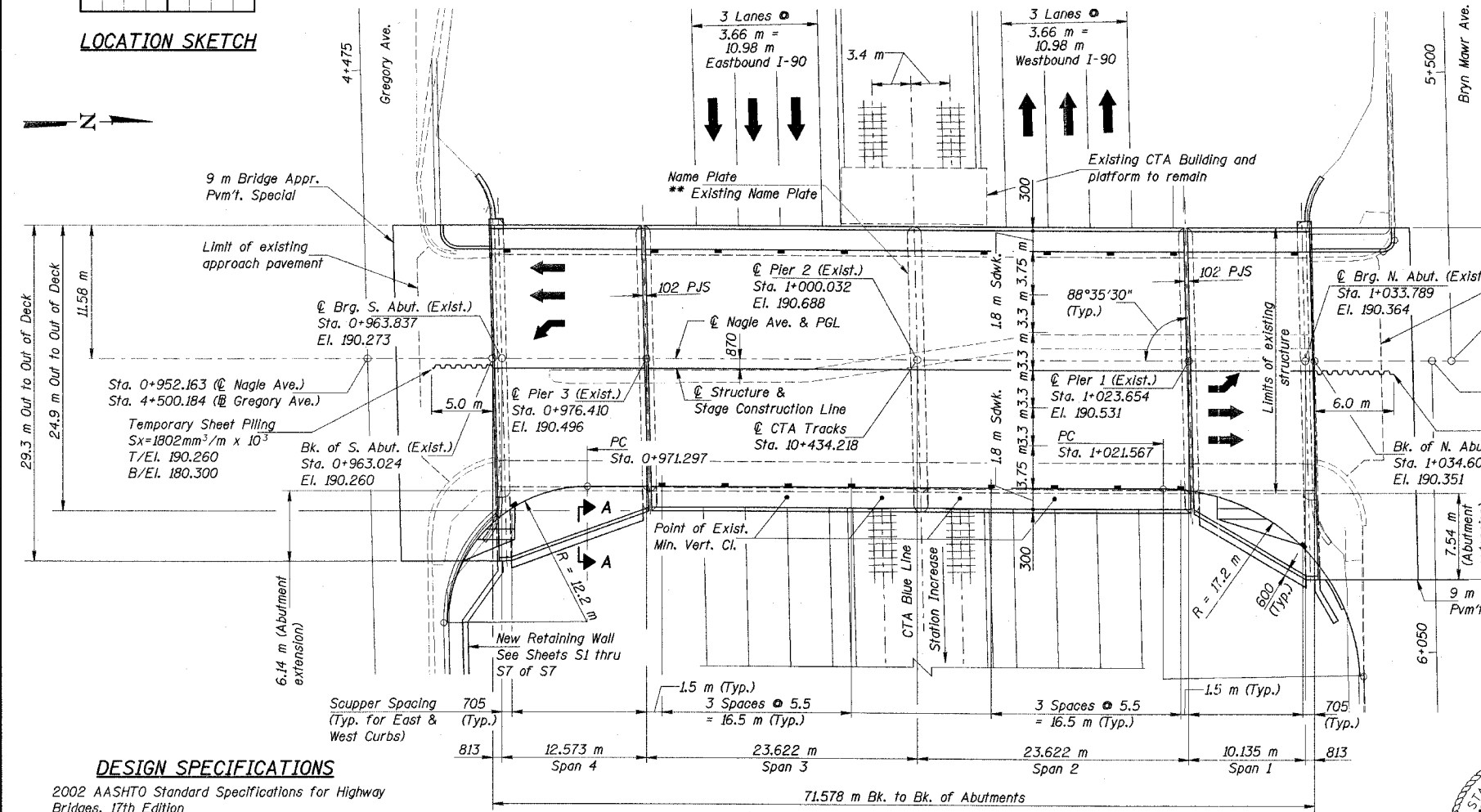
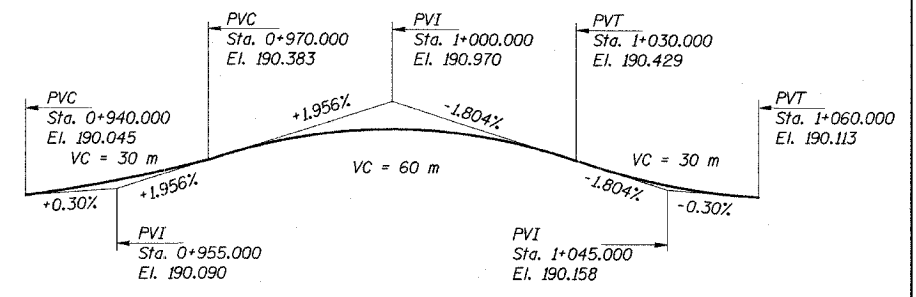
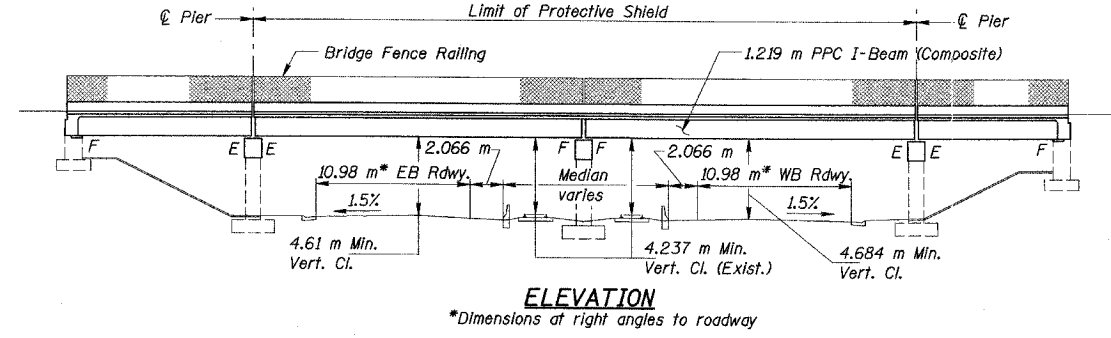
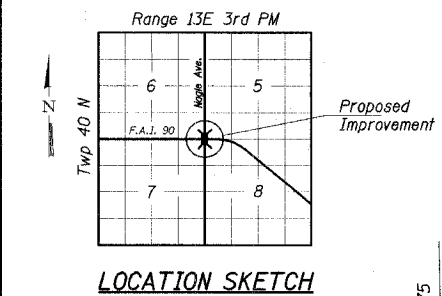


Bench Mark:
TBM #187 - City of Chicago Bench Mark: Level with ground on northwest corner of Newark/Hurlbut
8.15 m north of north R.O.W. Hurlbut, 2.555 m east of west Newark. El. 191.048

Existing Structure : S.N. 016-0708 A four simple span structure with a concrete deck supported on 1.22 m PPC I-Beams. The length back to back of abutments is approximately 71.578 m. The superstructure is supported by stub abutments and multi-column open piers on spread footings. Built as F.A. Route 173, Section 267-1314F-15D in 1958. Traffic shall be maintained during the rehabilitation of the structure by staged construction.

No Salvage
Note: All dimensions are in millimeters (mm) except as noted.

ROUTE NO.	SHEET NO.	COUNTY	TOTAL SHEETS	SHEET NO.	SHEET NO. S1
FAU 2783	1314B	COOK	160	79	S40 SHEETS
FED. ROAD DIST. NO. 7	ILLINOIS	FED. AID PROJECT	CONTRACT 60293		



DESIGN SPECIFICATIONS
2002 AASHTO Standard Specifications for Highway Bridges, 17th Edition

LOADING MS18
Allow 2.4 kN/m² for future wearing surface.

DESIGN STRESSES

FIELD UNITS
NEW CONSTRUCTION
f'c = 24 MPa
fy = 400 MPa (Reinf.)
fy = 250 MPa (M 270M Gr. 250-Structural Steel)

PRECAST PRESTRESSED UNITS
f'c = 42 MPa
f'ci = 35 MPa
f's = 1,860 MPa (12.7 mm ϕ low lax. strands)
f'sl = 1,395 MPa (12.7 mm ϕ low lax. strands)

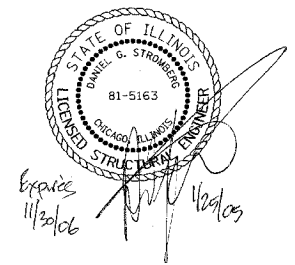
SEISMIC DATA
Seismic Performance Category (SPC) = A
Bedrock Acceleration Coefficient (A) = 0.04g
Site coefficient (S) = 1.0

PLAN

STATION 0+998.813
RE-BUILT 200 BY
STATE OF ILLINOIS
F.A.U. RT. 2783 SEC 1314B
STR. NO. 016-0708 LOADING MS18

NAME PLATE
See Std. 515001

** The new Name Plate shall be attached to the pier next to the existing Name Plate according to Section 515 of the Standard Specifications except that the Name Plate shall be surface mounted using vandal-proof screws.



APPROVED
FOR STRUCTURAL ADEQUACY ONLY
Ralph E. Anderson
ENGINEER OF BRIDGES AND STRUCTURES

Note:
See Sheet S3 for Section A-A.

REVISIONS	
NAME	DATE

ILLINOIS DEPARTMENT OF TRANSPORTATION
F.A.I. 90 (I-90)
AT NAGLE AVENUE
F.A.U. RTE. 2783 SEC 1314B
COOK COUNTY STATION 0+998.813
STRUCTURE NO. 016-0708

GENERAL PLAN AND ELEVATION

DRAWN BY KAC
CHECKED BY LDB/DGS
DATE: DEC. 2004