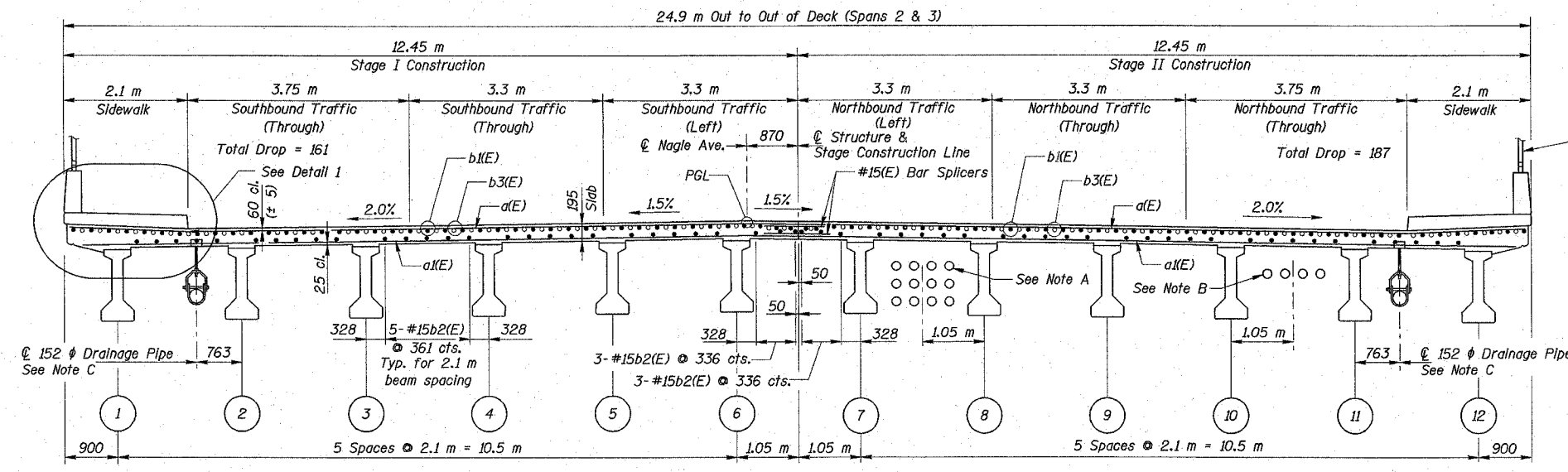
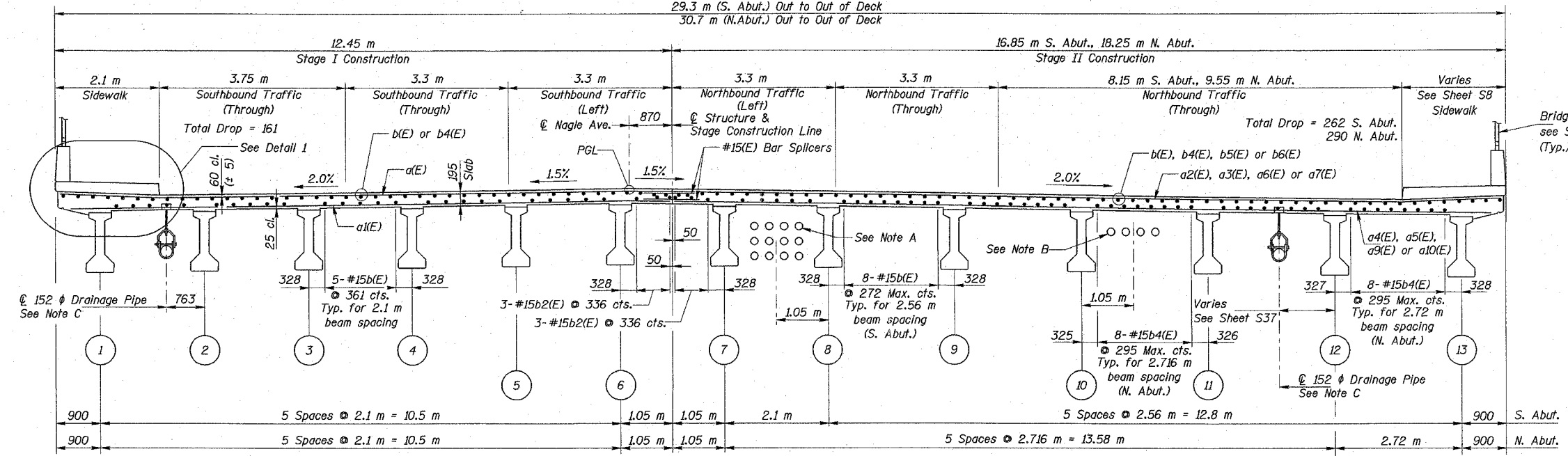


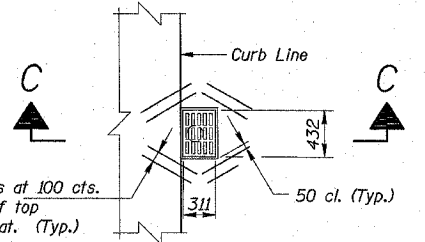
ROUTE NO.	SECTION	COUNTY	TOTAL SHEETS	SHEET NO.	SHEET NO. S9
FAUJ 2783	1314B	COOK	160	87	S40 SHEETS
FED. ROAD DIST. NO. 7		ILLINOIS	FED. AID PROJECT		
CONTRACT 60293					



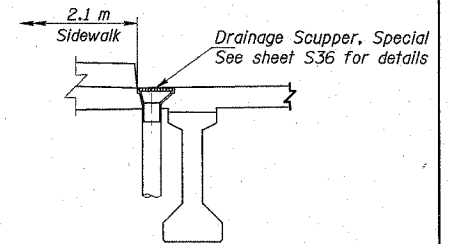
**SECTION A-A**



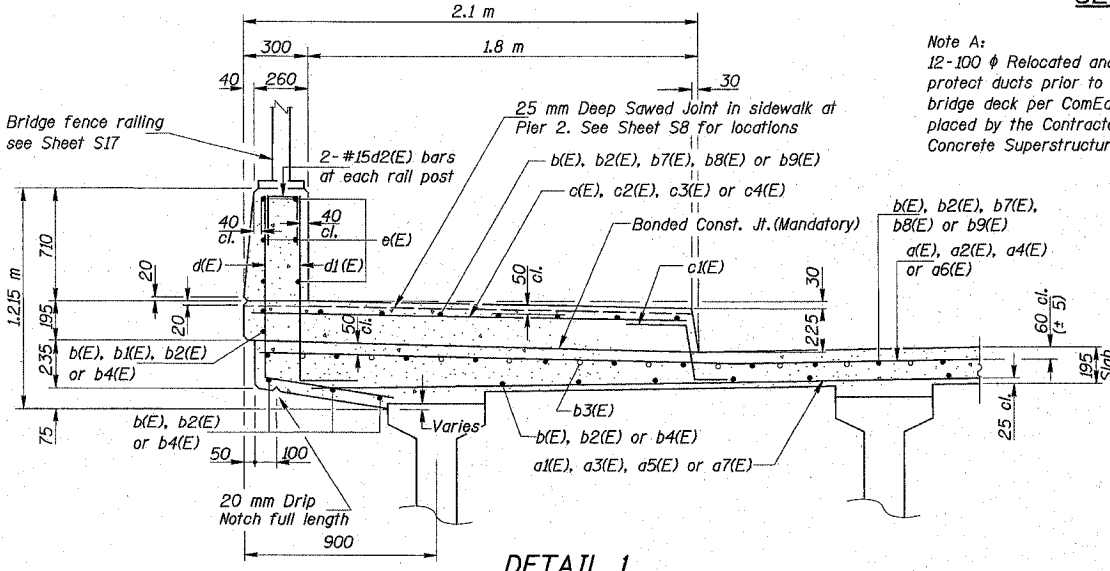
**SECTION B-B**



**PLAN**  
(Typical Scupper Deck Details)



**SECTION C-C**



**DETAIL 1**

**Note A:**  
12-100  $\phi$  Relocated and/or protected ducts. ComEd to relocate and/or protect ducts prior to Stage II Removal. Hangers and Inserts in new bridge deck per ComEd requirements. Inserts are to be furnished and placed by the Contractor. This work shall be included in the cost of Concrete Superstructure bid item.

**Note B:**  
4-90  $\phi$  Relocated and/or protected City of Chicago Electric ducts. Contractor to relocate and/or protect ducts prior to Stage I Removal. Hangers and inserts in new bridge deck per City of Chicago Electric requirements. Inserts are to be furnished and placed by the Contractor. All work shall be included in the cost of Concrete Superstructure bid item.

**Note C:**  
Provide clevis type pipe hangers with threaded rods, nuts and concrete inserts spaced as required by manufacturer. Drainage Pipe shall be located to clear diaphragm at Piers 1 and 3, and shall not be set lower than bottom of Fascia beam. Cost is included with Drainage System bid item.

**Notes:**  
Reinforcement bars designated (E) shall be epoxy coated. All dimensions are in millimeters (mm) except as noted. See Electrical Drawings for Underpass Luminaires location and attachment details to deck. See Sheet S16 for Bill of Materials. See Sheet S39 for Bar Splicer Details.

REVISIONS	
NAME	DATE

**COLLINS ENGINEERS**  
123 N. WACKER DR., SUITE 300  
CHICAGO, IL 60606  
(312) 704-9300  
ILLINOIS PROFESSIONAL DESIGN FIRM  
LICENSE NO. 184-000993

ILLINOIS DEPARTMENT OF TRANSPORTATION  
F.A.I. 90 (I-90)  
AT NAGLE AVENUE  
F.A.J. RTE. 2783 SEC 1314B  
COOK COUNTY STATION 1+001.212  
STRUCTURE NO. 016-0708

**SUPERSTRUCTURE DETAILS-I**

DRAWN BY KAC  
CHECKED BY LDB/DGS  
DATE: DEC. 2004