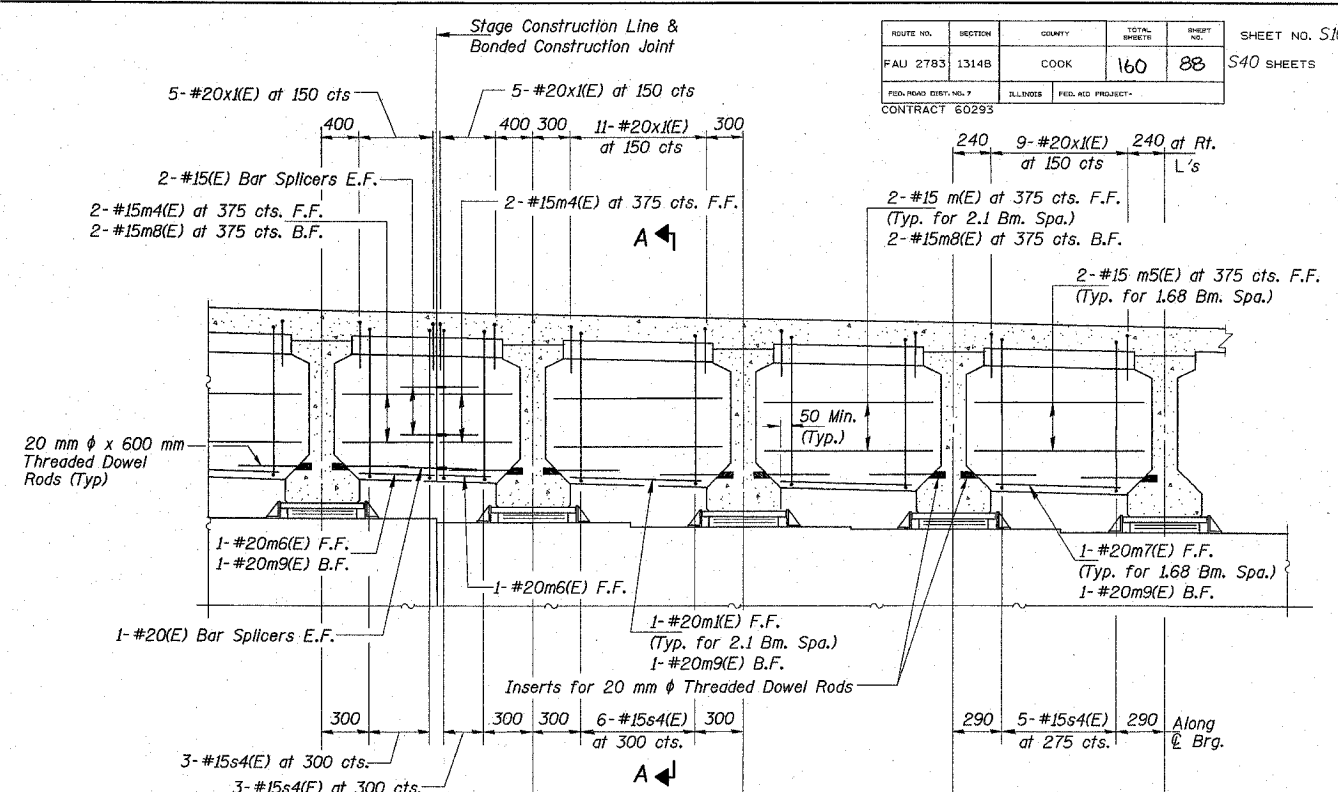


DIAPHRAGM AT PIER 1 (SOUTH BEARING) & PIER 3 (NORTH BEARING)
(Typical Cross Section Details) (Looking North)

Beam spacing shown to indicate required details. Refer to Sheet S20 for beam spacing configuration at Piers 1 and 3.

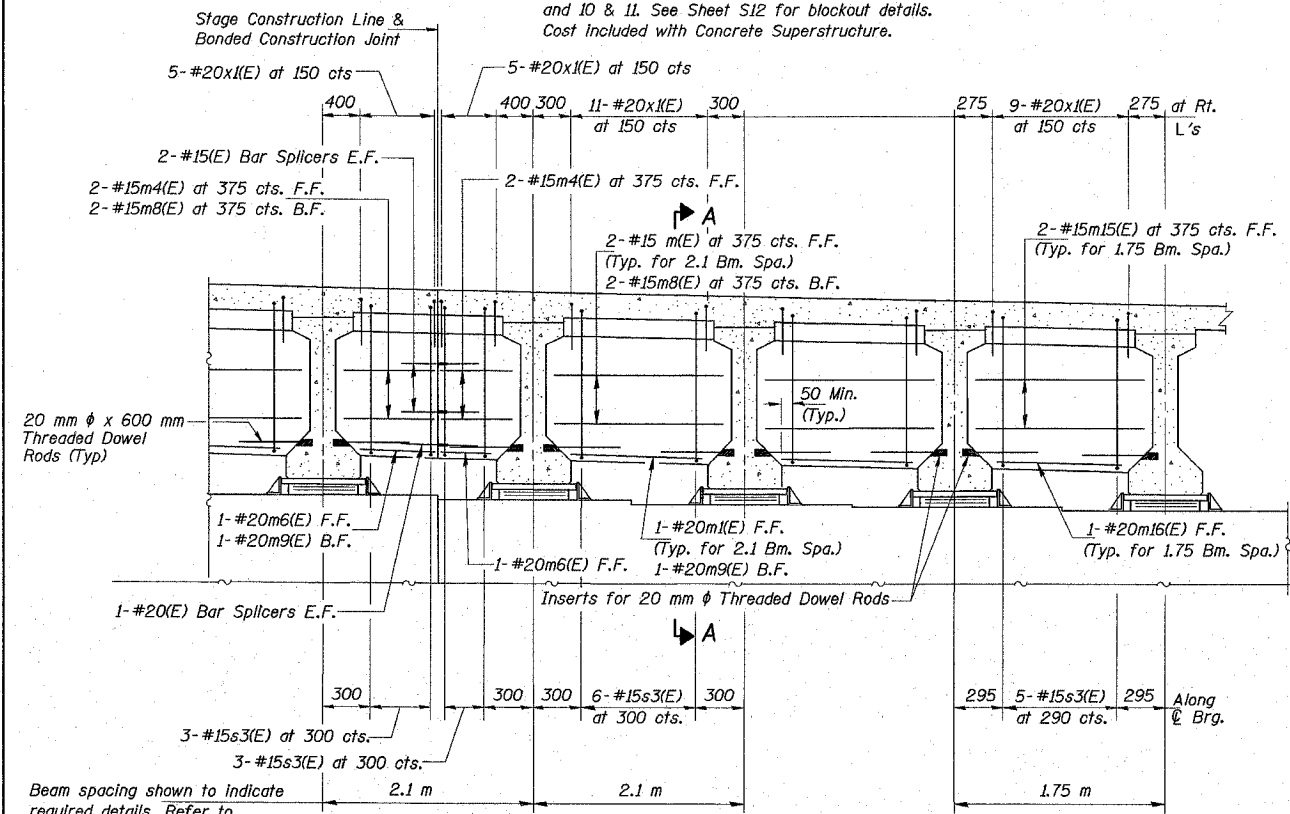
Note:
Provide conduit blockout between Beams 7 & 8 and 10 & 11. See Sheet S12 for blockout details. Cost included with Concrete Superstructure.



DIAPHRAGM AT PIER 3 (SOUTH BEARING)
(Typical Cross Section Details) (Looking North)

Beam spacing shown to indicate required details. Refer to Sheet S20 for beam spacing configuration at Piers 1 and 3.

Note:
Provide conduit blockout between Beams 7 & 8 and 10 & 11. See Sheet S12 for blockout details. Cost included with Concrete Superstructure.

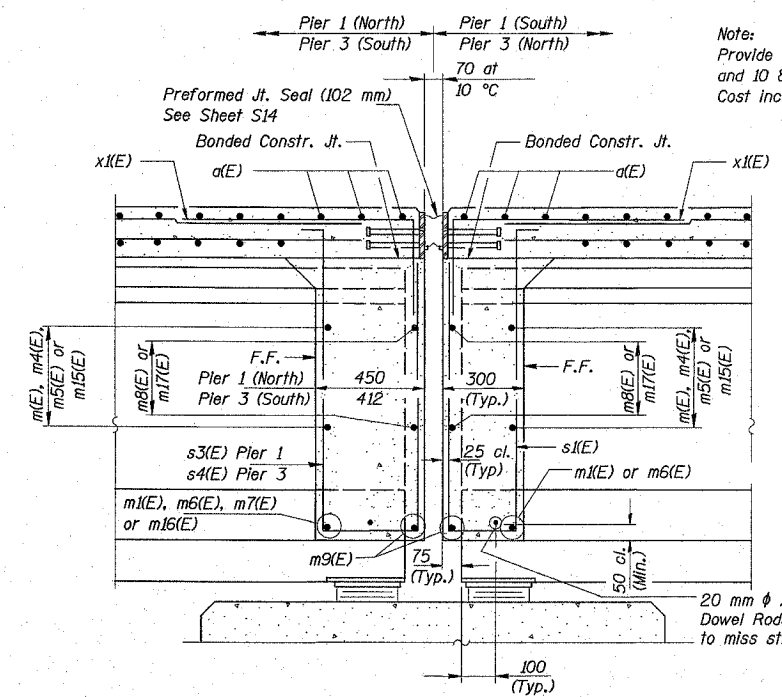


DIAPHRAGM AT PIER 1 (NORTH BEARING)
(Typical Cross Section Details) (Looking North)

Beam spacing shown to indicate required details. Refer to Sheet S20 for beam spacing configuration at Piers 1 and 3.

Note:
Provide conduit blockout between Beams 7 & 8 and 10 & 11. See Sheet S12 for blockout details. Cost included with Concrete Superstructure.

Notes:
Reinforcement bars designated (E) shall be epoxy coated. All dimensions are in millimeters (mm) except as noted. See Sheet S16 for Bill of Materials. See Sheet S12 for conduit opening in diaphragms.



SECTION A-A
(at Rt. L's)

Legend:
F.F. = Front Face
B.F. = Back Face
E.F. = Each Face

COLLINS ENGINEERS
123 N. WACKER DR., SUITE 300
CHICAGO, IL 60606
(312) 704-9300
ILLINOIS PROFESSIONAL DESIGN FIRM
LICENSE NO. 184-000993

REVISIONS	
NAME	DATE

ILLINOIS DEPARTMENT OF TRANSPORTATION
F.A.I. 90 (I-90)
AT NAGLE AVENUE
F.A.U. RTE. 2783 SEC 1314B
COOK COUNTY STATION 0+998.813
STRUCTURE NO. 016-0708

SUPERSTRUCTURE DETAILS-II

DRAWN BY KAC
CHECKED BY LDB/DGS DATE: DEC. 2004