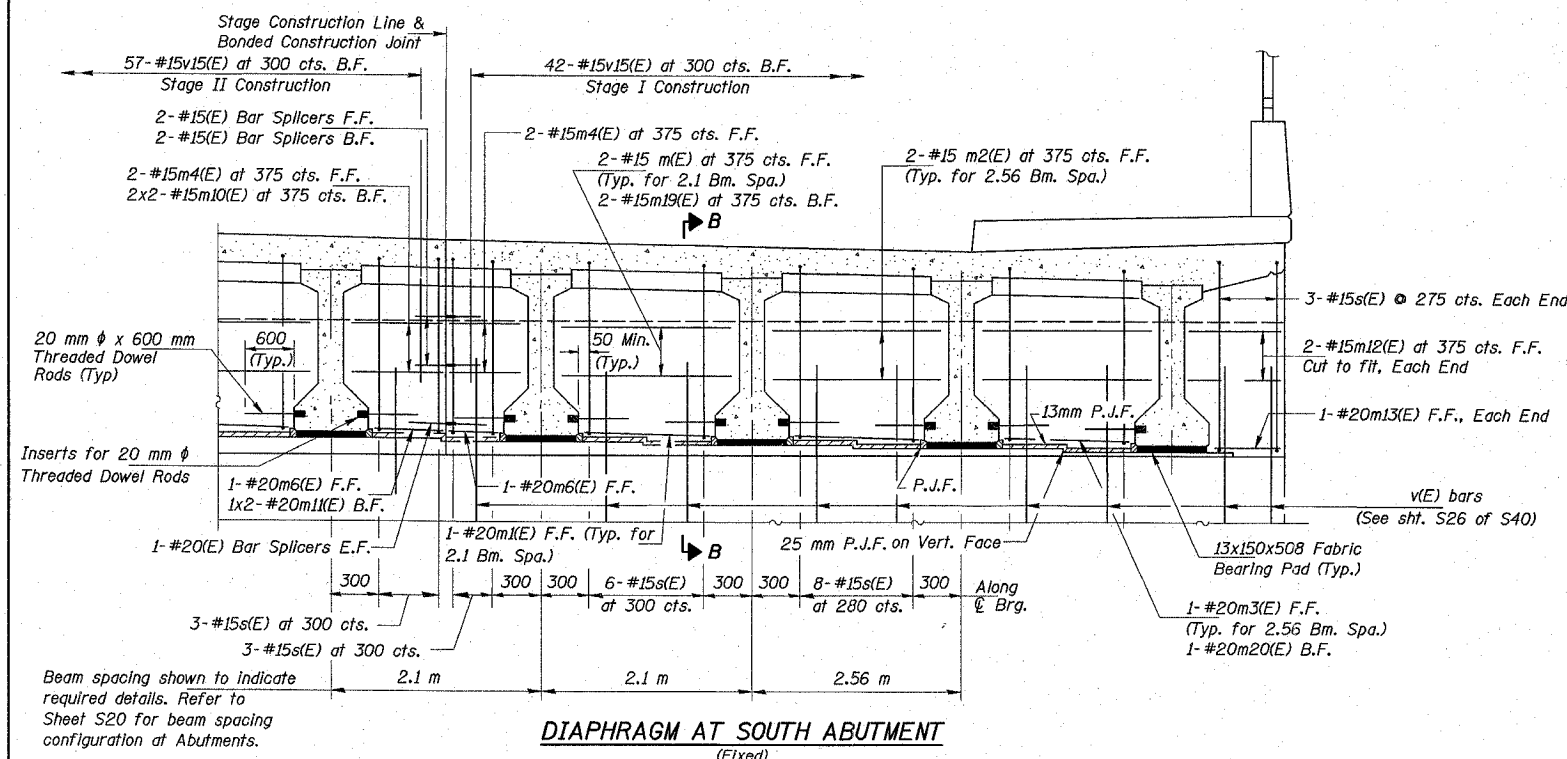
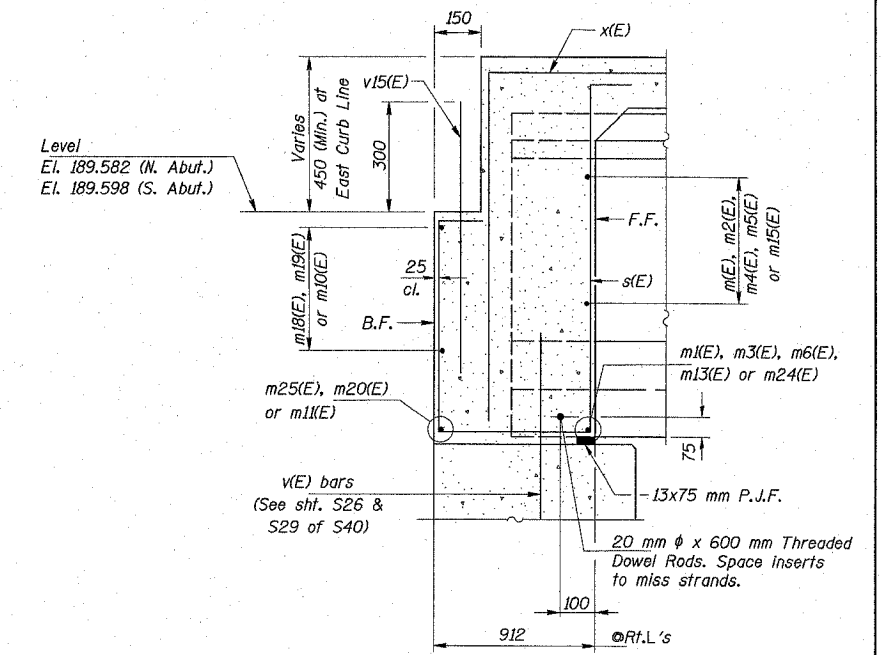


ROUTE NO.	SECTION	COUNTY	TOTAL SHEETS	SHEET NO.	SHEET NO. S11
FAU 2783	1314B	COOK	160	89	S40 SHEETS
FED. ROAD DIST. NO. 7		ILLINOIS	FED. AID PROJECT		
CONTRACT 60293					

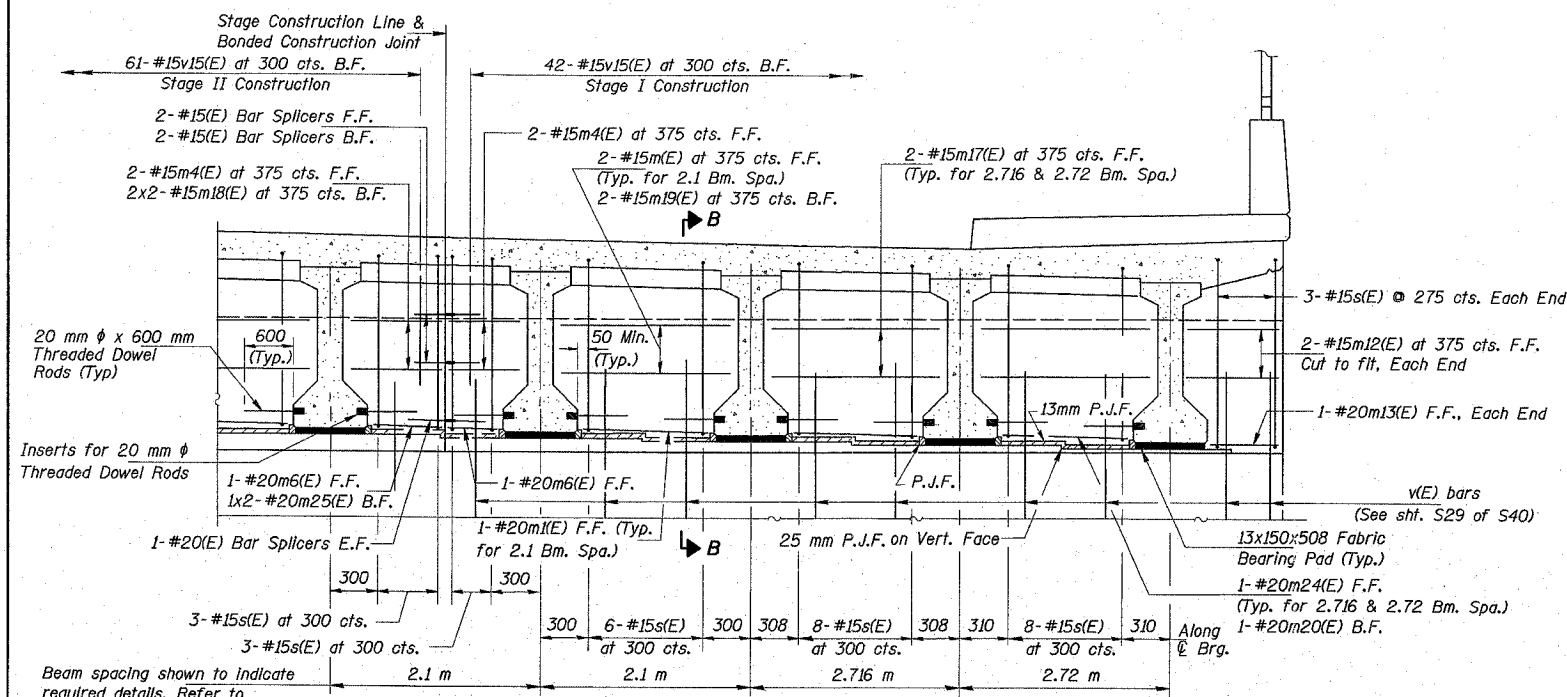


DIAPHRAGM AT SOUTH ABUTMENT
(Fixed)
(Typical Cross Section Details)

Note:
Provide conduit blockout between Beams 7 & 8 and 10 & 11. See Sheet S12 for blockout details.
Cost included with Concrete Superstructure.



SECTION B-B
(Fixed)



DIAPHRAGM AT NORTH ABUTMENT
(Fixed)
(Typical Cross Section Details)

Note:
Provide conduit blockout between Beams 7 & 8 and 10 & 11. See Sheet S12 for blockout details.
Cost included with Concrete Superstructure.

Legend:
F.F. = Front Face
B.F. = Back Face
E.F. = Each Face

Notes:
Reinforcement bars designated (E) shall be epoxy coated.
All dimensions are in millimeters (mm) except as noted.
See Sheet S16 for Bill of Material.
See Sheet S12 for conduit openings in diaphragms.

<p>COLLINS ENGINEERS 123 N. WACKER DR., SUITE 300 CHICAGO, IL 60606 (312) 704-9300 ILLINOIS PROFESSIONAL DESIGN FIRM LICENSE NO. 184-000993</p>	REVISIONS	<p>ILLINOIS DEPARTMENT OF TRANSPORTATION F.A.I. 90 (I-90) AT NAGLE AVENUE F.A.U. RTE. 2783 SEC 1314B COOK COUNTY STATION 0+998.813 STRUCTURE NO. 016-0708</p> <p>SUPERSTRUCTURE DETAILS-III</p> <p>DRAWN BY KAC CHECKED BY LDB/DGS</p>
	NAME	
	DATE	

DATE: DEC. 2004