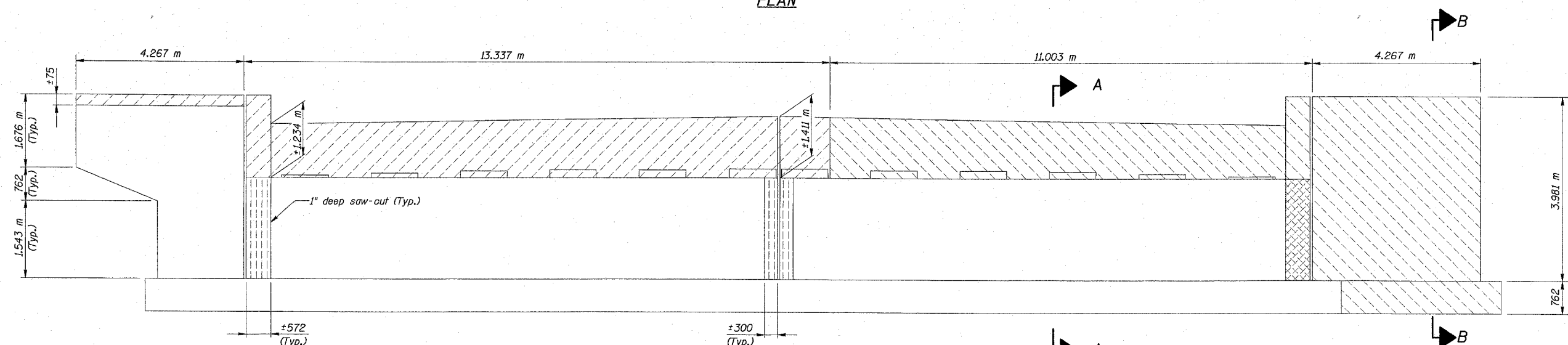
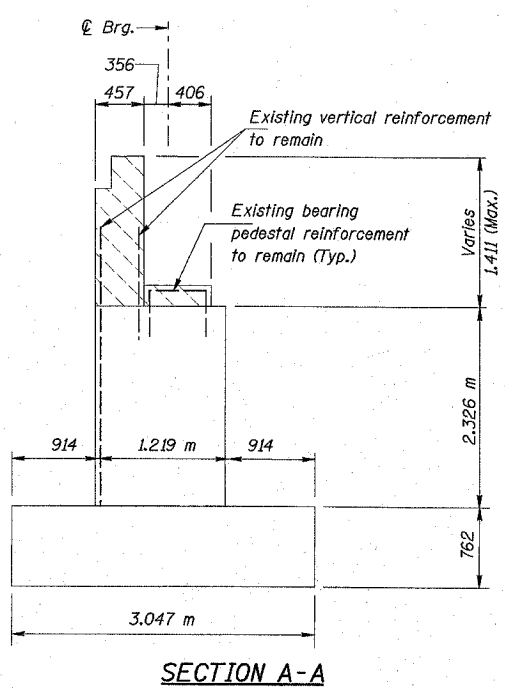


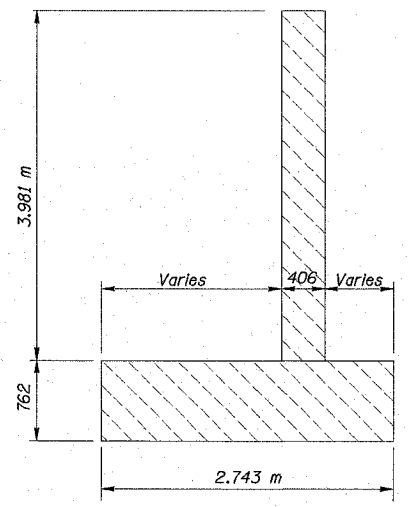
**PLAN**



**ELEVATION**  
(Looking North)



**SECTION A-A**



**SECTION B-B**

- Legend:**
- Stage I Removal  
Denotes concrete removal, existing vertical bars to remain
  - Stage I Removal  
Denotes concrete removal, existing vertical and horizontal bars to remain.
  - Stage II Removal  
Denotes concrete removal, existing vertical bars to remain
  - Stage II Removal  
Denotes concrete removal, existing vertical and horizontal bars to remain.

**Notes:**  
 Sand blast clean, straighten and incorporate existing vertical and horizontal reinforcement in new construction, as noted. Cost included with Concrete Removal.  
 Existing reinforcement not extending into new construction shall be cut off flush and covered with 50 mm layer of cement grout. Cost included with Concrete Removal.  
 During concrete removal the contractor shall exercise care not to nick, gouge or otherwise damage the existing reinforcement that will be incorporated into the new construction.  
 All dimensions are in millimeters (mm) except as noted.  
 Existing anchor bolts to be cut flush with top of existing concrete cost included with Concrete Removal pay item.

**BILL OF MATERIAL**

ITEM	UNIT	TOTAL
Concrete Removal	m <sup>3</sup>	35.0

**COLLINS ENGINEERS**  
 123 N. WACKER DR., SUITE 300  
 CHICAGO, IL 60606  
 (312) 704-9300  
 ILLINOIS PROFESSIONAL DESIGN FIRM  
 LICENSE NO. 184-000993

REVISIONS	
NAME	DATE

ILLINOIS DEPARTMENT OF TRANSPORTATION  
 F.A.I. 90 (I-90)  
 AT NAGLE AVENUE  
 F.A.U. RTE. 2783 SEC 1314B  
 COOK COUNTY STATION 0+998.813  
 STRUCTURE NO. 016-0708

**NORTH ABUTMENT REMOVAL**

DRAWN BY KAC  
 CHECKED BY LDB/DGS  
 DATE: DEC. 2004