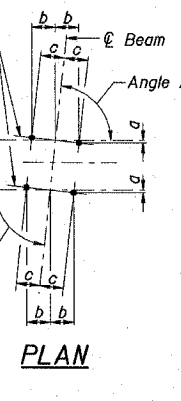
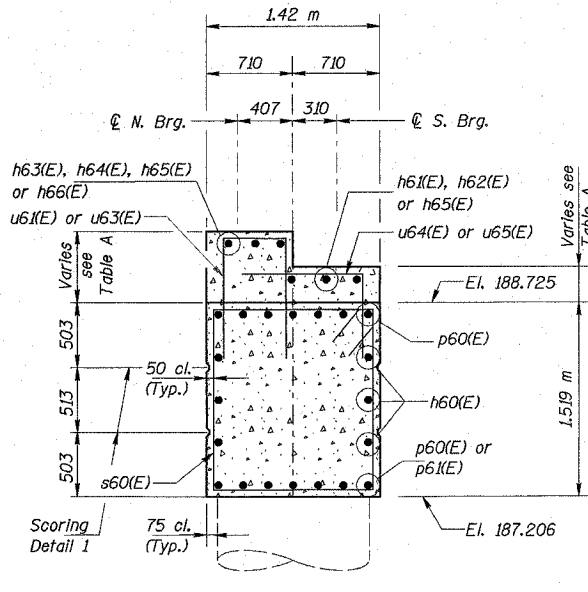


SPAN 1				
BEAM NO.	ANGLE A	a	b	c
1 - 7	88°-35'-30"	9	352	352
8	83°-09'-35"	43	359	352
9	77°-50'-55"	76	354	352
10	72°-44'-23"	107	346	352
11	67°-53'-58"	136	335	352
12	63°-22'-10"	162	324	352
13	59°-09'-18"	186	311	352

SPAN 2				
BEAM NO.	ANGLE B	a	b	c
1 - 12	88°-35'-30"	9	352	352

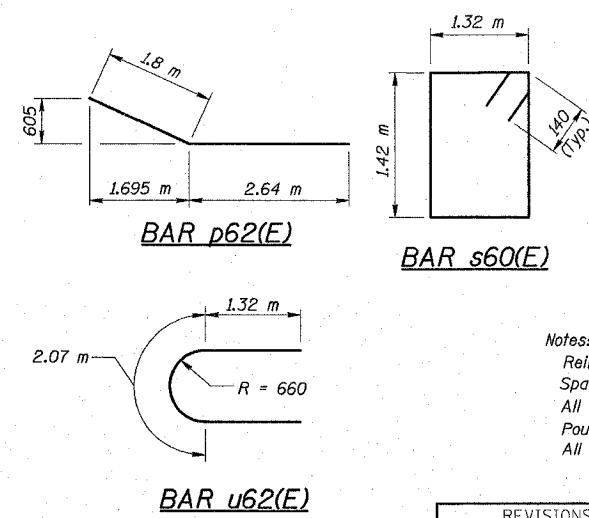
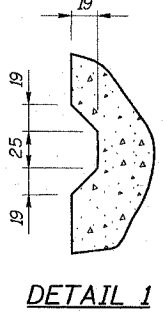
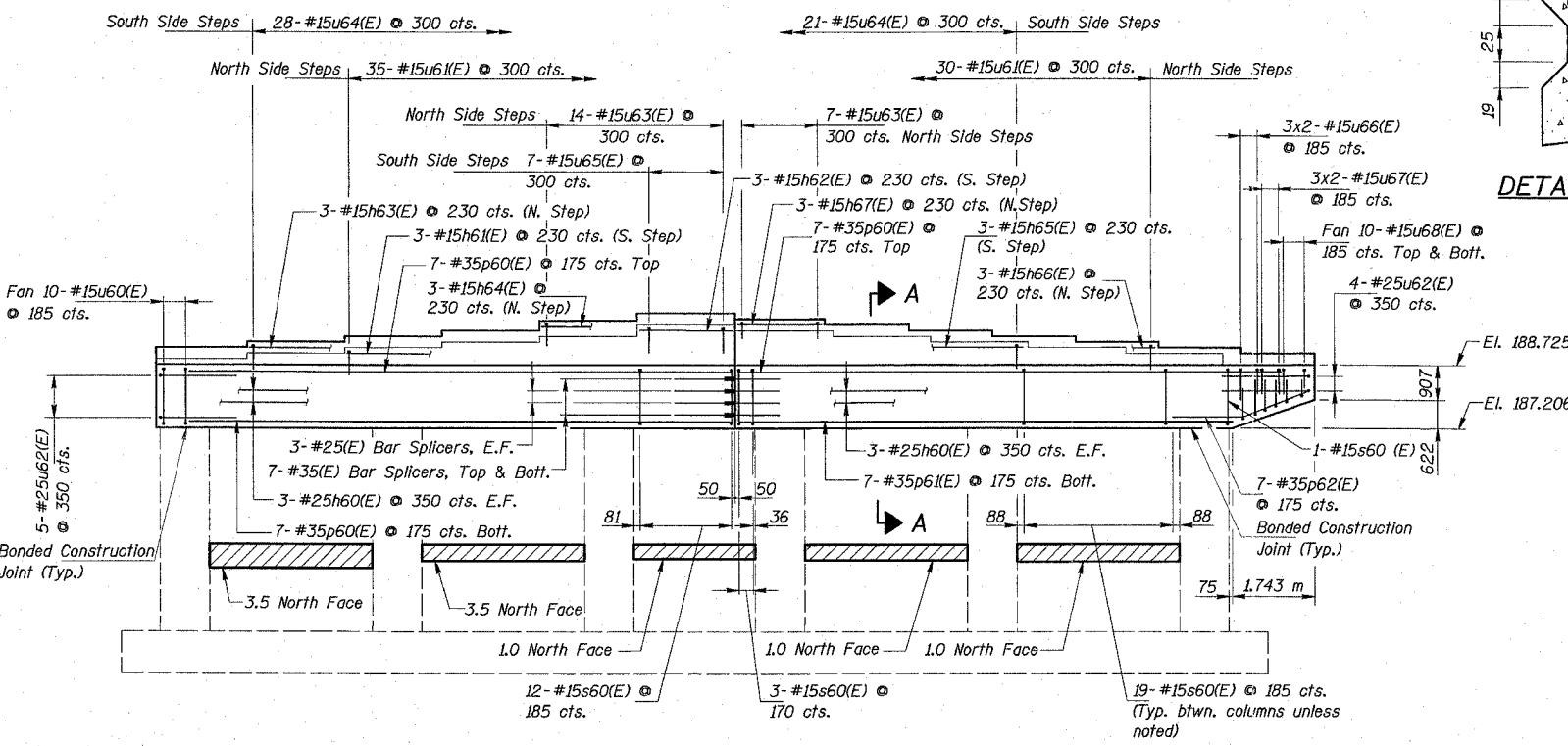


ANCHOR BOLT LOCATIONS-



BILL OF MATERIAL

BAR	NO.	SIZE	LENGTH (m)	SHAPE
h60(E)	12	#25	11.70	—
h61(E)	3	#15	8.30	—
h62(E)	3	#15	2.00	—
h63(E)	3	#15	10.25	—
h64(E)	3	#15	4.10	—
h65(E)	3	#15	6.20	—
h66(E)	3	#15	8.83	—
h67(E)	3	#15	1.83	—
p60(E)	21	#35	11.69	—
p61(E)	7	#35	10.61	—
p62(E)	7	#35	4.44	—
s60(E)	92	#15	5.76	□
u60(E)	10	#15	3.34	□
u61(E)	65	#15	1.41	□
u62(E)	9	#25	4.71	□
u63(E)	21	#15	1.64	□
u64(E)	49	#15	1.38	□
u65(E)	7	#15	1.47	□
u66(E)	6	#15	3.10	□
u67(E)	6	#15	2.90	□
u68(E)	20	#15	1.69	□
Reinforcement Bars, Epoxy Coated		kg	4,980	
Concrete Structures		m ³	57.5	
High Performance Enhanced Shotcrete		m ²	10	
Bridge Seat Sealer		m ²	37	



BAR	A	B
u60(E)	960	1,42 m
u61(E)	400	610
u63(E)	515	610
u66(E)	890	1,32 m
u67(E)	790	1,32 m

BAR	A	B
u64(E)	420	960
u65(E)	510	960
u68(E)	730	960

Legend:
 Indicates High Performance-Enhanced Shotcrete in square meters
 E.F. Indicates Each Face

ELEVATION

TABLE A													
LOCATION	BEAM 1	BEAM 2	BEAM 3	BEAM 4	BEAM 5	BEAM 6	BEAM 7	BEAM 8	BEAM 9	BEAM 10	BEAM 11	BEAM 12	BEAM 13
Step Elevation S. Brg.	188.751	188.793	188.835	188.870	188.902	188.933	188.907	188.876	188.844	188.809	188.767	188.725	—
Offset	—	42	42	35	32	31	26	31	32	35	42	42	—
Step Elevation N. Brg.	188.783	188.825	188.867	188.902	188.934	188.965	188.939	188.912	188.886	188.859	188.824	188.788	188.752
Offset	—	42	42	35	32	31	26	27	26	27	35	36	36

REVISIONS	
NAME	DATE

COLLINS ENGINEERS
 123 N. WACKER DR., SUITE 300
 CHICAGO, IL 60606
 (312) 704-9300
 ILLINOIS PROFESSIONAL DESIGN FIRM
 LICENSE NO. 184-000993

ILLINOIS DEPARTMENT OF TRANSPORTATION
 F.A.I. 90 (I-90)
 AT NAGLE AVENUE
 F.A.U. RTE. 2783 SEC 1314B
 COOK COUNTY STATION O+998.813
 STRUCTURE NO. 016-0708

PIER 1 DETAILS

DRAWN BY KAC
 CHECKED BY LDB/DGS
 DATE: DEC. 2004