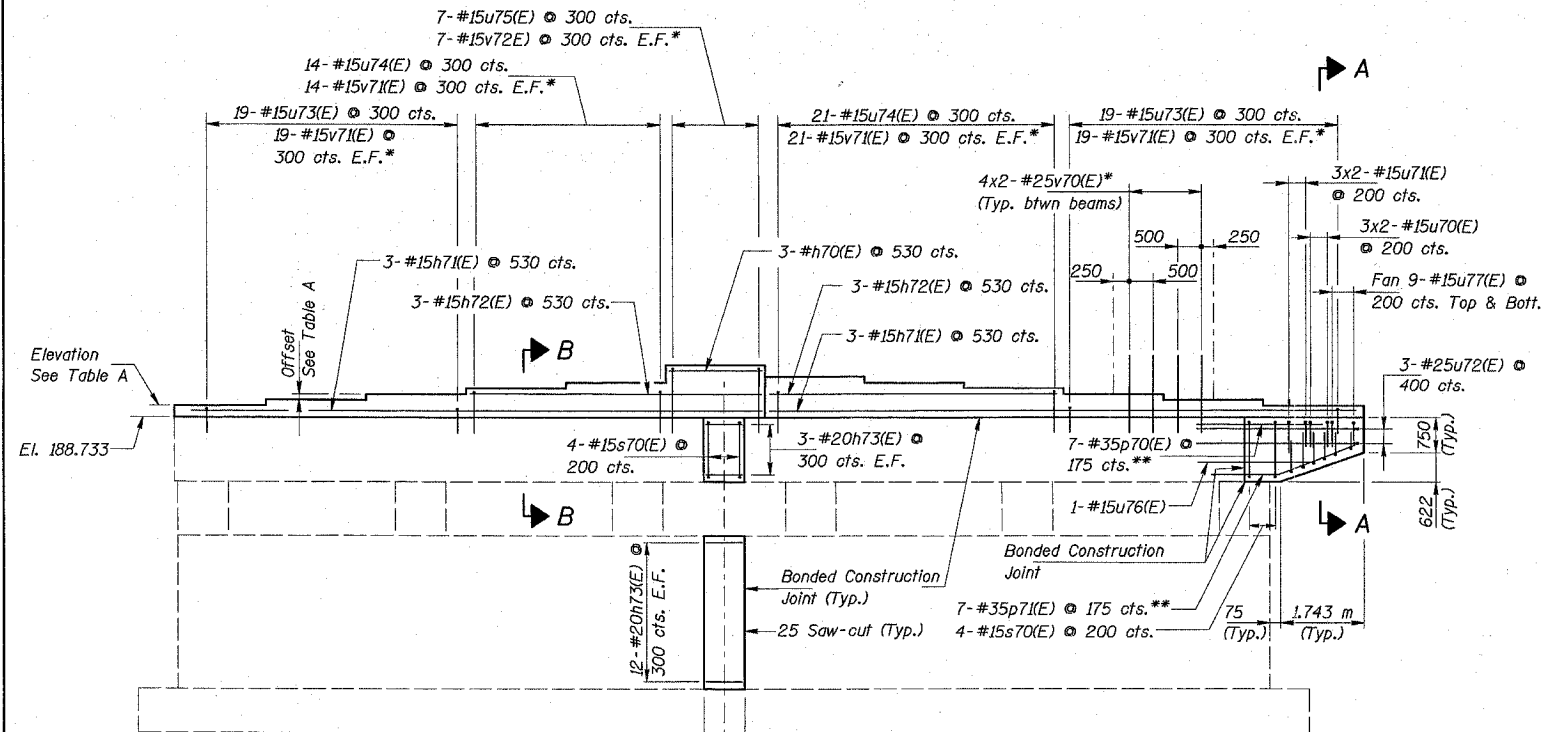
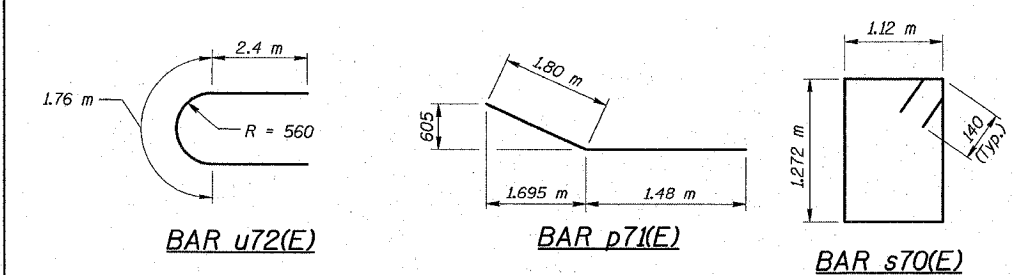


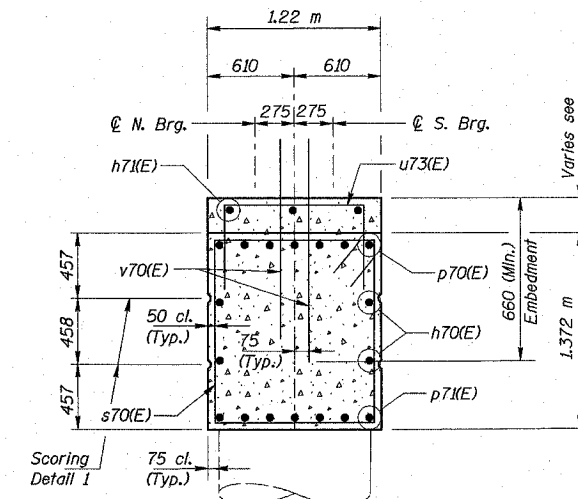
PLAN



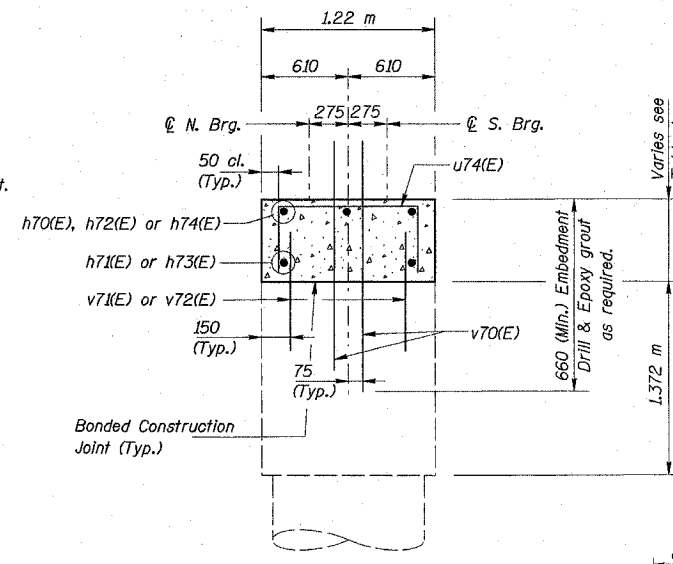
ELEVATION



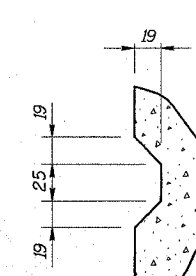
LOCATION	BEAM 1	BEAM 2	BEAM 3	BEAM 4	BEAM 5	BEAM 6	BEAM 7	BEAM 8	BEAM 9	BEAM 10	BEAM 11	BEAM 12
Step Elevation	189.007	189.049	189.091	189.126	189.158	189.189	189.163	189.132	189.100	189.065	189.023	188.981
Offset		42	42	35	32	32	26	31	32	35	42	42



SECTION A-A



SECTION B-B



DETAIL 1

Note: Scoring dimensions and location to match existing scoring dimensions and locations. Scoring to be at new concrete at center of pier cap also.

BAR	NO.	SIZE	LENGTH (m)	SHAPE
h70(E)	3	#15	2.0	—
h7(E)	6	#15	11.80	—
h72(E)	6	#15	6.20	—
h73(E)	30	#20	0.75	—
p70(E)	7	#35	3.08	—
p7(E)	7	#35	3.28	—
s70(E)	8	#15	5.064	□
u70(E)	6	#15	2.54	□
u7(E)	6	#15	2.74	—
u72(E)	3	#25	6.56	—
u73(E)	38	#15	1.46	□
u74(E)	35	#15	1.70	□
u75(E)	7	#15	1.82	—
u76(E)	1	#15	5.56	—
u77(E)	18	#15	1.50	—
v70(E)	88	#25	1.26	—
v7(E)	146	#15	0.600	—
v72(E)	14	#15	0.680	—
Reinforcement Bars, Epoxy Coated		kg	1,610	
Concrete Structures		m ³	18.5	

BAR	NO.	SIZE	LENGTH (m)
u76(E)	1	#15	5.56
u75(E)	7	#15	1.82
u74(E)	35	#15	1.70
u73(E)	38	#15	1.46
u72(E)	3	#25	6.56
u7(E)	6	#15	2.74
u70(E)	6	#15	2.54

BARS u70(E), u7(E), u73(E), u74(E), u75(E) & u76(E)

BAR u77(E)

Notes:
Reinforcement bars designated (E) shall be epoxy coated.
Space reinforcement in cap to miss anchor bolts.
All edges shall have standard 20 mm chamfers except as noted.
Pour steps monolithically with cap.
All dimensions are in millimeters (mm) except as noted.

NAME	DATE

COLLINS ENGINEERS
123 N. WACKER DR., SUITE 300
CHICAGO, IL 60606
(312) 704-9300
ILLINOIS PROFESSIONAL DESIGN FIRM
LICENSE NO. 184-000993

ILLINOIS DEPARTMENT OF TRANSPORTATION
F.A.I. 90 (I-90)
AT NAGLE AVENUE
F.A.U. RTE. 2783 SEC 1314B
COOK COUNTY STATION 0+998.813
STRUCTURE NO. 016-0708

PIER 2 DETAILS

DRAWN BY KAC
CHECKED BY LDB/DGS
DATE: DEC. 2004