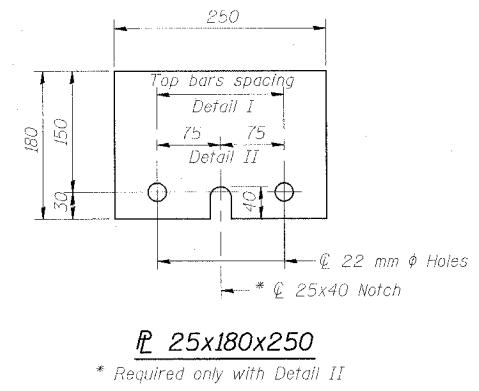
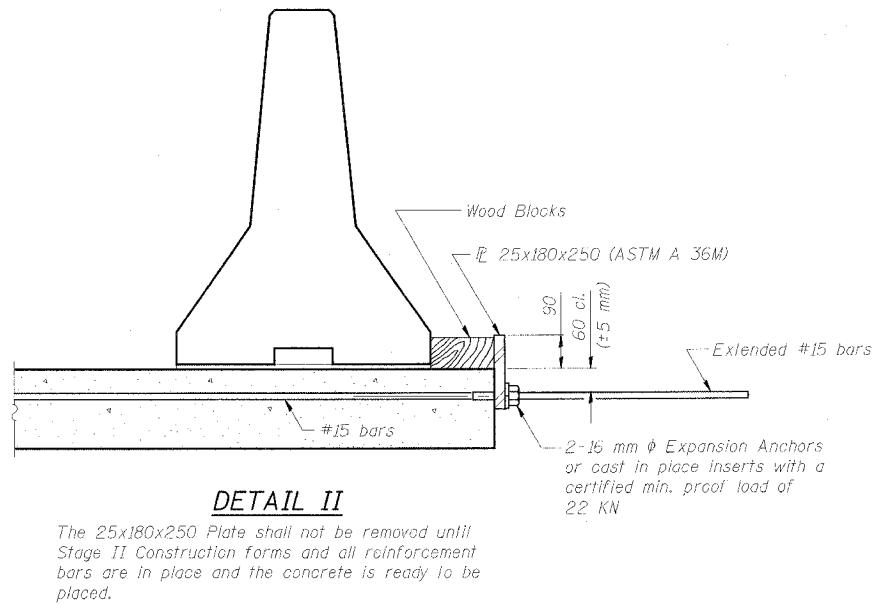
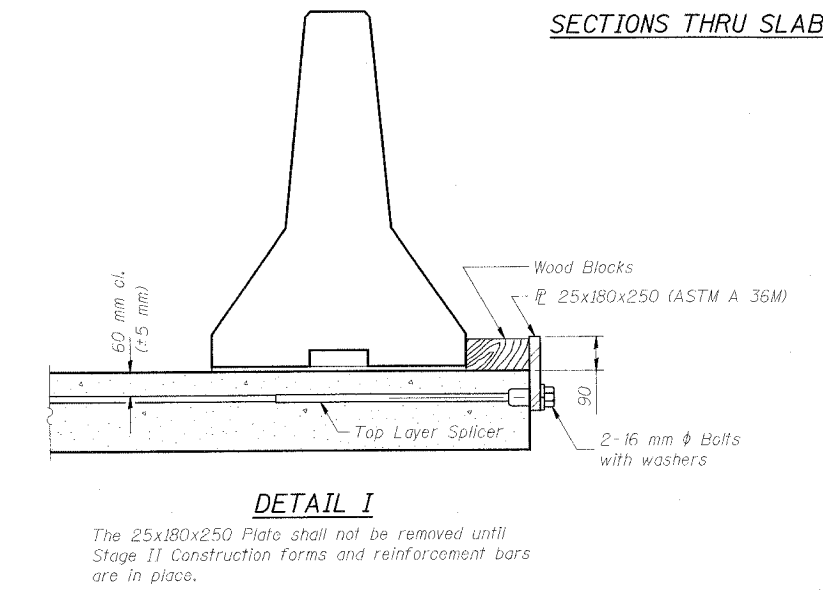
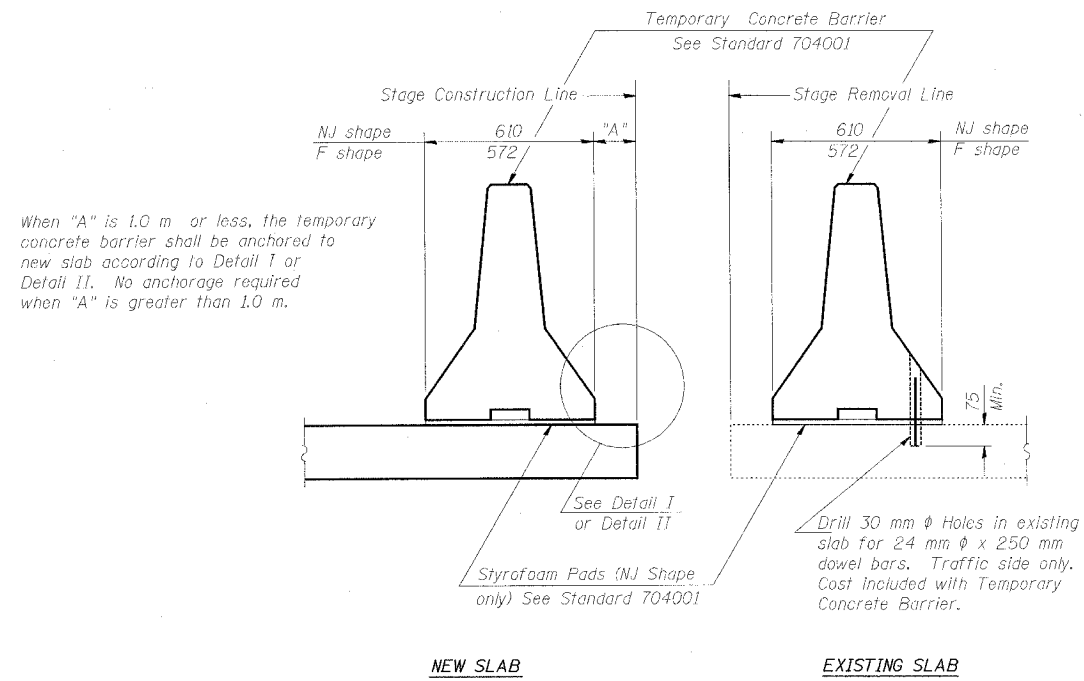


STATE OF ILLINOIS  
DEPARTMENT OF TRANSPORTATION

ROUTE NO.	SECTION	COUNTY	TOTAL SHEETS	SHEET NO.
F.A.P. Rt. 305	28R-2-RS-1	McHenry	53	18
FED. ROAD DIST. NO. 1		ILLINOIS	FED. AID PROJECT	
CONTRACT NUMBER: 60756				



**NOTES**

Detail I - With Bar Splicer or Couplers:  
Connect one (1) 25x180x250 steel  $\bar{L}$  to the top layer of couplers with 2-16 mm  $\phi$  bolts screwed to coupler at approximate  $\bar{C}$  of each barrier panel.

Detail II - With Extended Reinforcement Bars:  
Connect one (1) 25x180x250 steel  $\bar{L}$  to the concrete slab with 2-16 mm  $\phi$  Expansion Anchors or cast in place inserts spaced between the top layer of reinforcement at approximate  $\bar{C}$  of each barrier panel.

Cost of anchorage is included with Temporary Concrete Barrier. All dimensions are in millimeters (mm) except as noted.

10/18/52 AM  
12/27/2004

R-27 (M) 4-30-99

TEMPORARY CONCRETE BARRIER			
Date	Designed MR	SOUTH ST. OVER US 14 FAP ROUTE NO. 305 SECTION 28R-2-RS-1 STATION 29+999.897 COUNTY McHENRY STRUCTURE NO. 056-3015	Sheet No.
Revisions	Drawn MR		5
	Checked KSM		of 31
	Approved KSM		
HARRY O. HEPTER ASSOCIATES, INC. DESIGN AND CONSULTING ENGINEERS		65 East Jackson Blvd. Chicago, Illinois 60604 312/464-8181	File Name: 1962S05.DGN Job No. 1962