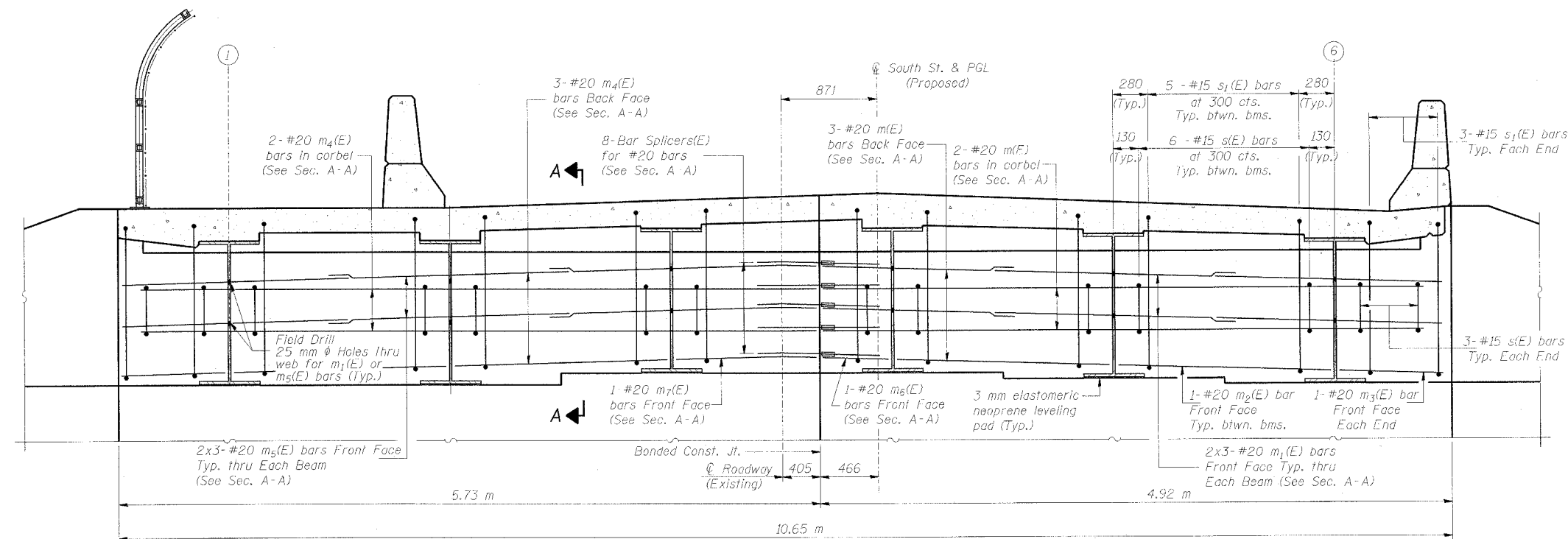


STATE OF ILLINOIS
DEPARTMENT OF TRANSPORTATION

ROUTE NO.	SECTION	COUNTY	TOTAL SHEETS	SHEET NO.
F.A.P. Rt. 305	28R-2-RS-1	McHenry	53	28
FED. ROAD DIST. NO. 1	ILLINOIS	FED. AID PROJECT	CONTRACT NUMBER: 60756	



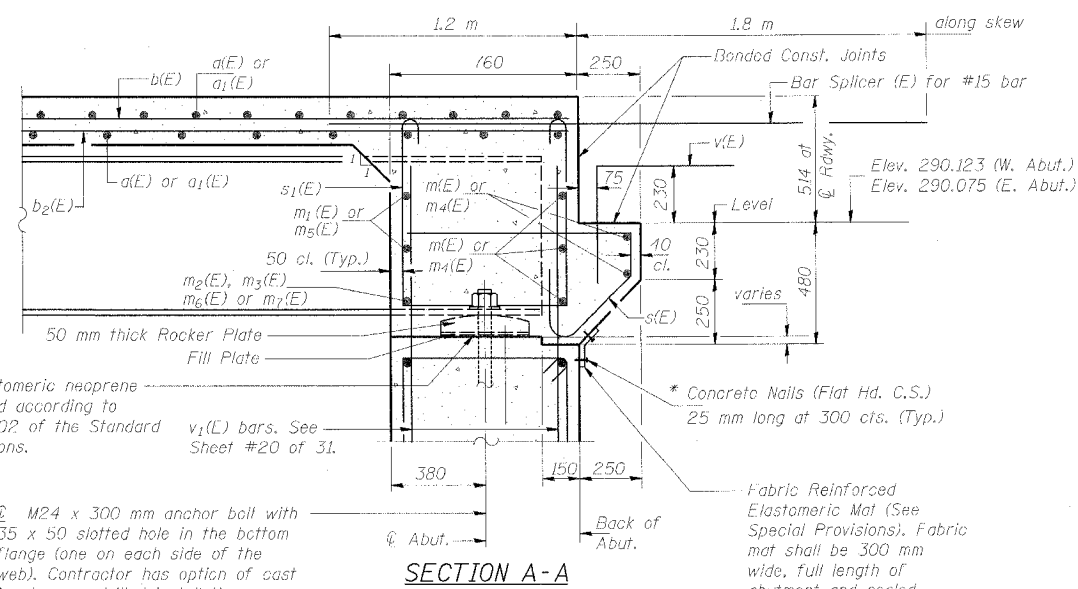
DIAPHRAGM ELEVATION AT EAST ABUTMENT

(Looking East)
West diaphragm similar & opposite hand.
Dimensions along front face of abutment

NOTES:

1. Reinforcement bars in diaphragm are billed with Superstructure on Sheet #12 of 31.
2. Concrete in diaphragm is included with Concrete Superstructure on Sheet #12 of 31.
3. For details of bars s(E) & s1(E) see Sheet #13 of 31.
4. The s(F) and s1(E) bars shall be placed parallel to the beams. Spacing for these bars shall be at right angles to the beams.
5. For anchor ball details see Sheet #19 of 31.
6. Reinforcement bars designated (E) shall be epoxy coated.
7. All dimensions are in millimeters (mm) except as noted.
8. Bars indicated thus 20x3 #15 etc. indicates 20 lines of bars with 3 lengths per line.

MIN. BAR. LAP
#20 bar = 850



SECTION A-A

3 mm elastomeric neoprene leveling pad according to Art. 1052.02 of the Standard Specifications.
v1(L) bars. See Sheet #20 of 31.
Back of Abut.

Dimensions at right angles to abutment, except as shown.
* Cost included with Concrete Superstructure.

END DIAPHRAGM REINF. & DETAILS

Date	Designed	MR	SOUTH ST. OVER US 14 FAP ROUTE NO. 305 SECTION 28R-2-RS-1 STATION 29+999.897 COUNTY McHENRY STRUCTURE NO. 056-3015	Sheet No.	
Revisions	Drawn	MR		15	of 31
	Checked	KSM			
	Approved	KSM			
HARRY O. HEFTER ASSOCIATES, INC. DESIGN AND CONSULTING ENGINEERS 55 East Jackson Blvd. Chicago, Illinois 60604 312/466-8181			File Name: 1962S15.DGN	Job No. 1962	

10:24:16 AM
12/27/2004