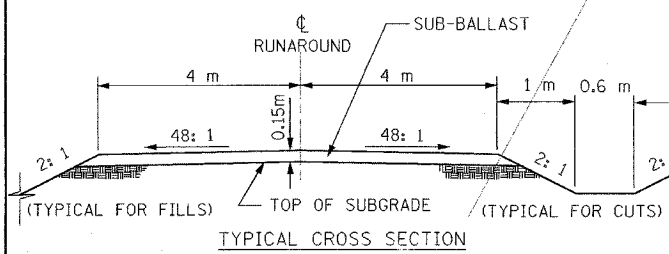
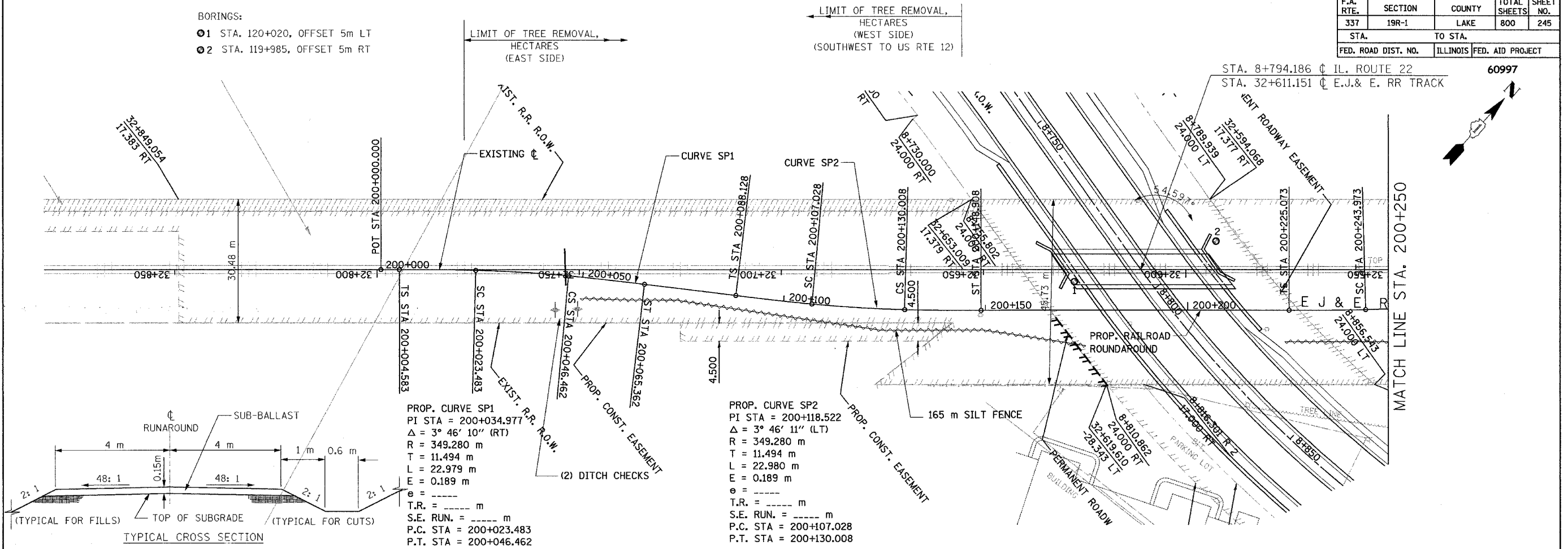


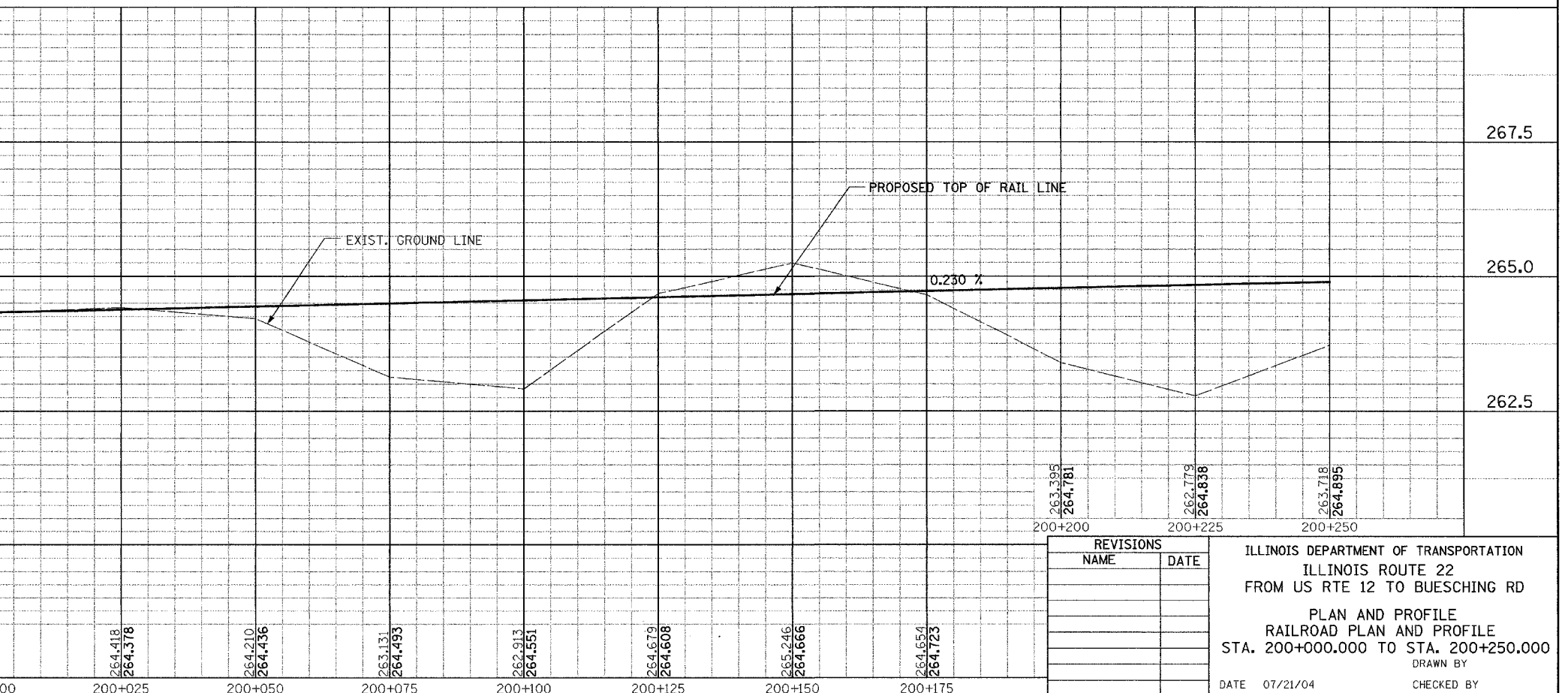
F.A. RTE.	SECTION	COUNTY	TOTAL SHEETS	SHEET NO.
337	19R-1	LAKE	800	245
STA.		TO STA.		
FED. ROAD DIST. NO.		ILLINOIS FED. AID PROJECT		

60997

- BORINGS:
- 1 STA. 120+020, OFFSET 5m LT
 - 2 STA. 119+985, OFFSET 5m RT



The sub-ballast shall be constructed according to Articles 351.02 through 351.10 of the Standard Specifications. Type B aggregate with a CA-6 gradation shall be used.



REVISIONS	
NAME	DATE

ILLINOIS DEPARTMENT OF TRANSPORTATION
ILLINOIS ROUTE 22
FROM US RTE 12 TO BUESCHING RD
PLAN AND PROFILE
RAILROAD PLAN AND PROFILE
STA. 200+000.000 TO STA. 200+250.000
DRAWN BY
DATE 07/21/04 CHECKED BY

Rev. 3-2-05

FINAL SURVEYED	BY	DATE
SURVEY PLOTTED		
NOTE BOOK TEMPLATE		
AREAS CHECKED		
NO.		

ORIGINAL SURVEYED	BY	DATE
SURVEY PLOTTED		
NOTE BOOK TEMPLATE		
AREAS CHECKED		
NO.		