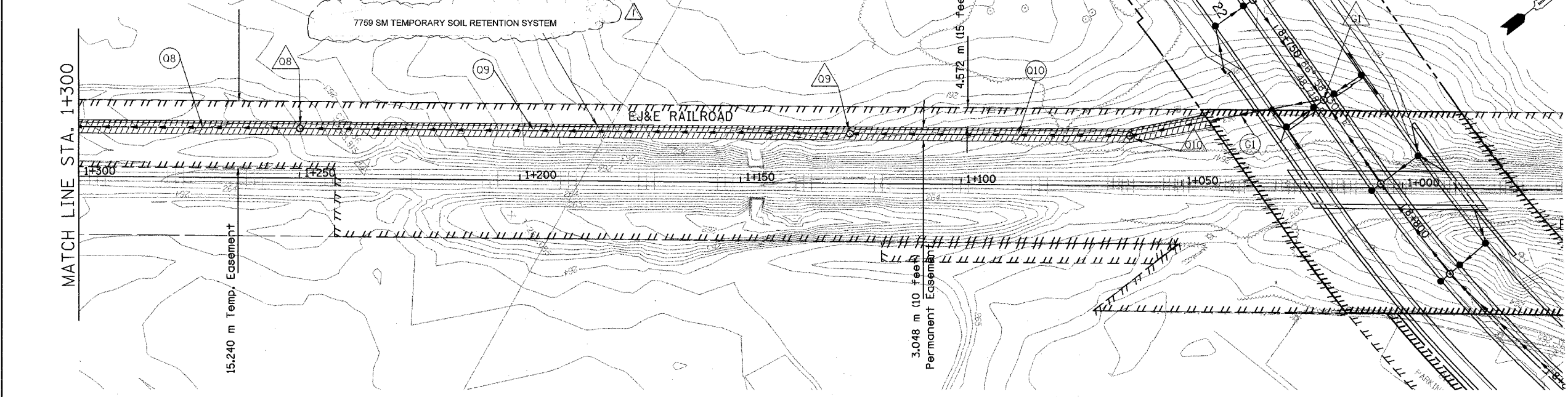


F.A. RTE.	SECTION	COUNTY	TOTAL SHEETS	SHEET NO.
337	19R-1	LAKE	800	277
STA.		TO STA.		
FED. ROAD DIST. NO.		ILLINOIS FED. AID PROJECT		

#60997

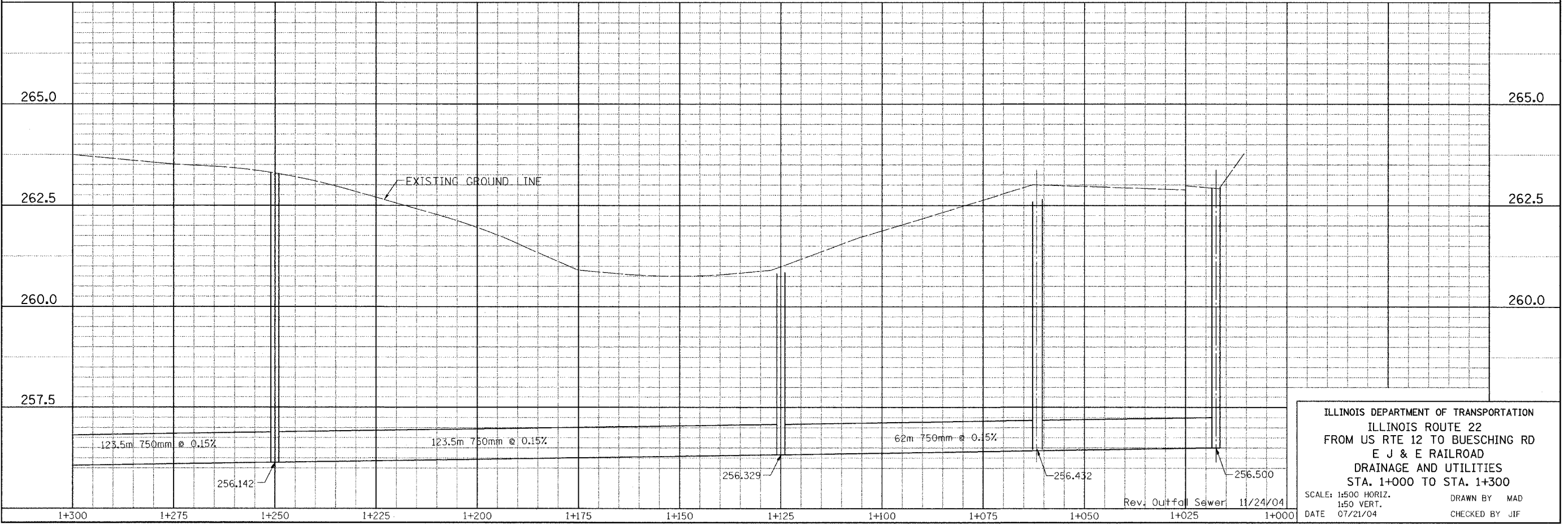
STR. NO.	Q8	Q9	Q10
STA.	1+250.0	1+125.0	1+061.8
OFF. (m)	11.28 RT	11.28 RT	11.28 RT
TYPE	MH-A	MH-A	MH-A
DIA. (m)	1.5	1.5	1.5
F&G	T-1-CL	T-1-CL	T-1-CL
RIM EL.	263.500	261.200	263.000
INV. N	256.142	256.329	256.432
INV. S	256.142	256.329	256.432
INV. E			
INV. W			

PIPE NO.	Q1	Q8	Q9	Q10
SIZE (mm)	750	750	750	750
LENGTH (m)	43.5	123.6	123.5	62.0
TYPE	4	4	4	4
T.B.F. (CU. M.)	45.90	N/A	N/A	N/A



BY	DATE
DATE	
BY	DATE
DATE	
BY	DATE
DATE	
BY	DATE
DATE	
BY	DATE
DATE	
BY	DATE
DATE	

BY	DATE
DATE	
BY	DATE
DATE	
BY	DATE
DATE	
BY	DATE
DATE	
BY	DATE
DATE	
BY	DATE
DATE	



ILLINOIS DEPARTMENT OF TRANSPORTATION
 ILLINOIS ROUTE 22
 FROM US RTE 12 TO BUESCHING RD
 E J & E RAILROAD
 DRAINAGE AND UTILITIES
 STA. 1+000 TO STA. 1+300
 SCALE: 1:500 HORIZ.
 1:50 VERT.
 DATE 07/21/04
 DRAWN BY MAD
 CHECKED BY JIF

Rev. 3-3-05