

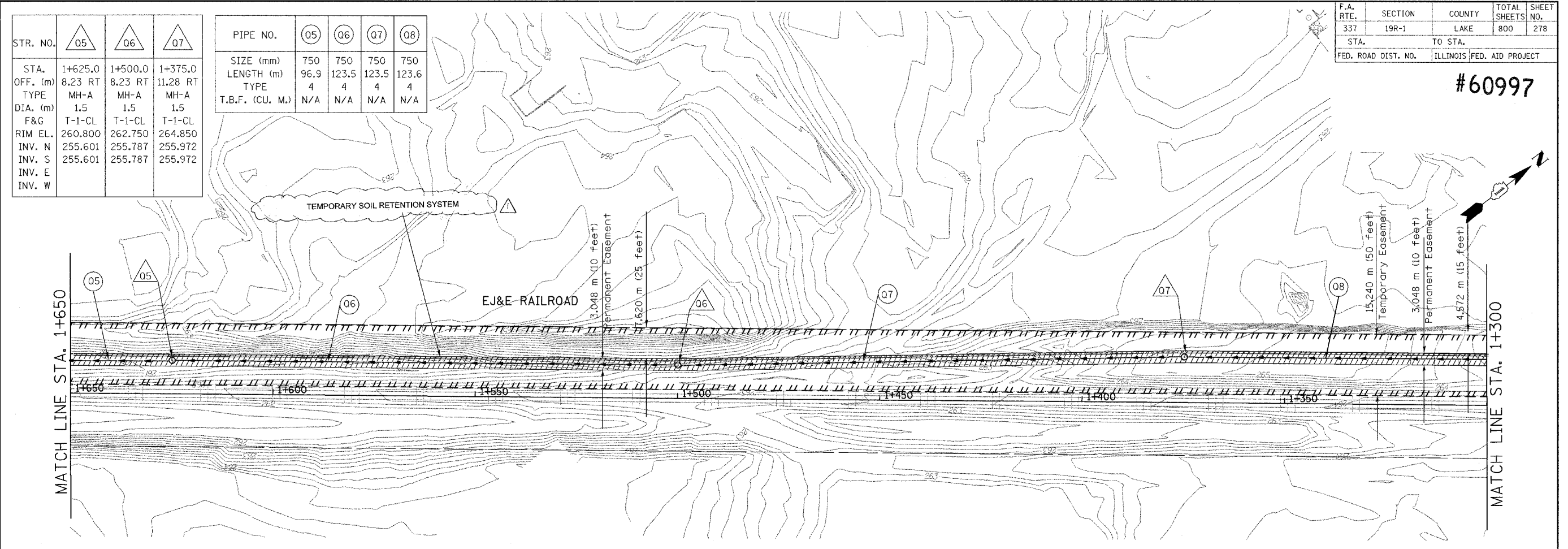
F.A. RTE.	SECTION	COUNTY	TOTAL SHEETS NO.
337	19R-1	LAKE	800
STA.	TO STA.		278
FED. ROAD DIST. NO.	ILLINOIS FED. AID PROJECT		

#60997

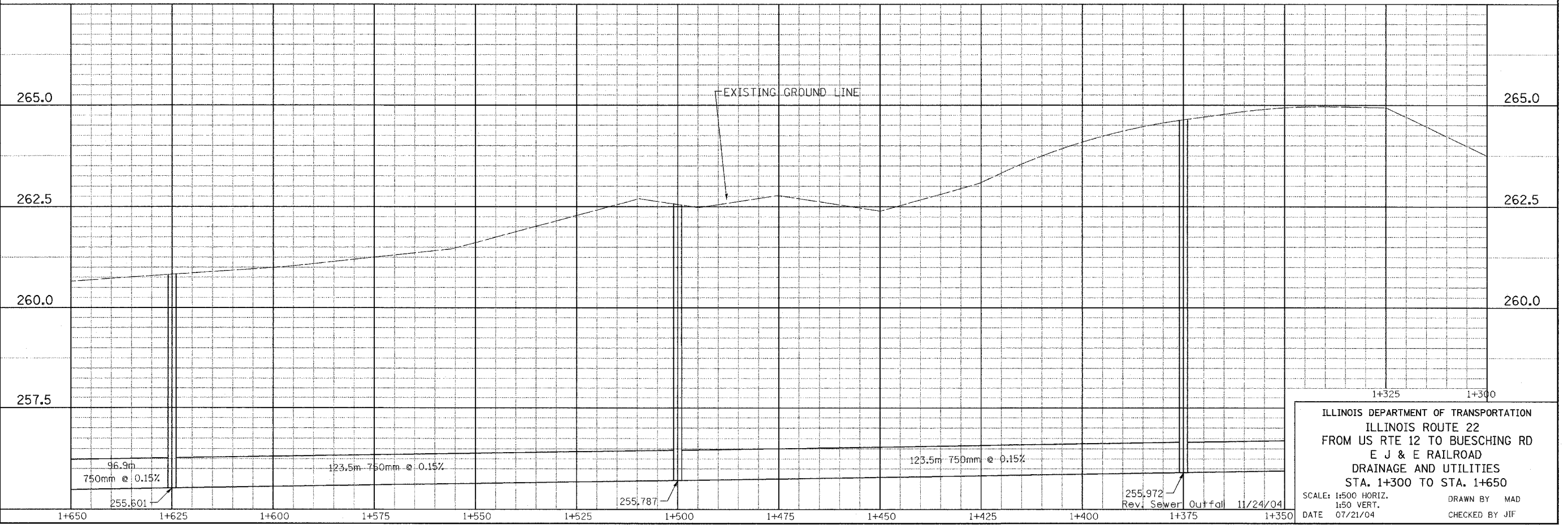
STR. NO.	△05	△06	△07
STA.	1+625.0	1+500.0	1+375.0
OFF. (m)	8.23 RT	8.23 RT	11.28 RT
TYPE	MH-A	MH-A	MH-A
DIA. (m)	1.5	1.5	1.5
F&G	T-1-CL	T-1-CL	T-1-CL
RIM EL.	260.800	262.750	264.850
INV. N	255.601	255.787	255.972
INV. S	255.601	255.787	255.972
INV. E			
INV. W			

PIPE NO.	○05	○06	○07	○08
SIZE (mm)	750	750	750	750
LENGTH (m)	96.9	123.5	123.5	123.6
TYPE	4	4	4	4
T.B.F. (CU. M.)	N/A	N/A	N/A	N/A

FINAL SURVEY	BY	DATE
SURVEY PLOTTED		
NOTE BOOK TEMPLATE		
AREAS CHECKED		
NO.		



ORIGINAL SURVEY	BY	DATE
SURVEY PLOTTED		
NOTE BOOK TEMPLATE		
AREAS CHECKED		
NO.		



ILLINOIS DEPARTMENT OF TRANSPORTATION
 ILLINOIS ROUTE 22
 FROM US RTE 12 TO BUESCHING RD
 E J & E RAILROAD
 DRAINAGE AND UTILITIES
 STA. 1+300 TO STA. 1+650

SCALE: 1:500 HORIZ.
 1:50 VERT.

DATE 07/21/04

Rev. Sewer Outfall 11/24/04

DRAWN BY MAD
 CHECKED BY JIF

Rev. 3-3-05