

F.A. RTE.	SECTION	COUNTY	TOTAL SHEETS	SHEET NO.
337	19R-1	LAKE	800	279
STA.		TO STA.		
FED. ROAD DIST. NO.		ILLINOIS FED. AID PROJECT		

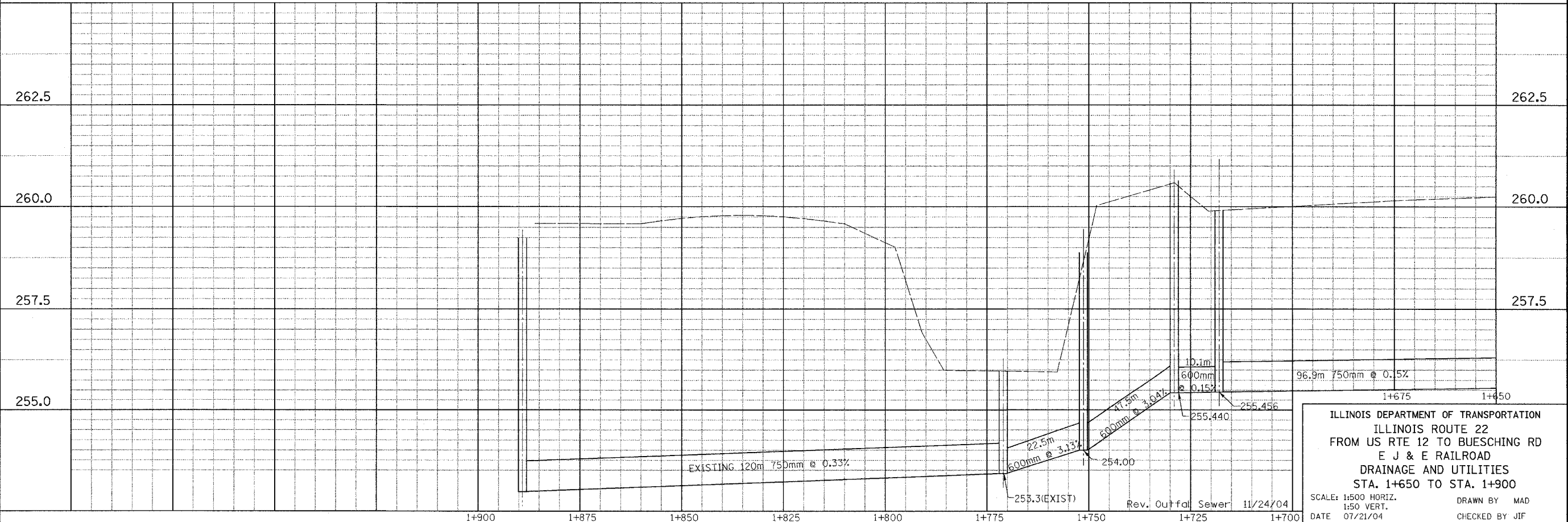
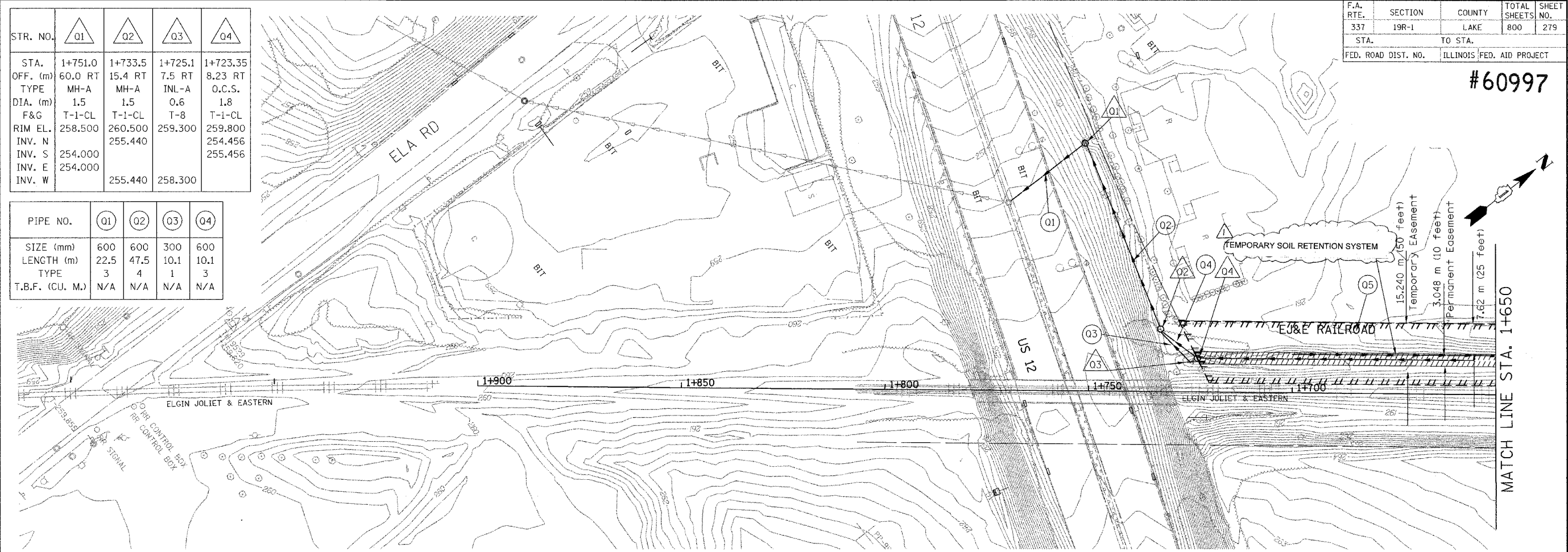
#60997

STR. NO.	Q1	Q2	Q3	Q4
STA.	1+751.0	1+733.5	1+725.1	1+723.35
OFF. (m)	60.0 RT	15.4 RT	7.5 RT	8.23 RT
TYPE	MH-A	MH-A	INL-A	O.C.S.
DIA. (m)	1.5	1.5	0.6	1.8
F&G	T-1-CL	T-1-CL	T-8	T-1-CL
RIM EL.	258.500	260.500	259.300	259.800
INV. N		255.440		254.456
INV. S	254.000			
INV. E	254.000			
INV. W		255.440	258.300	

PIPE NO.	Q1	Q2	Q3	Q4
SIZE (mm)	600	600	300	600
LENGTH (m)	22.5	47.5	10.1	10.1
TYPE	3	4	1	3
T.B.F. (CU. M.)	N/A	N/A	N/A	N/A </tr

FINAL SURVEY PLOTTED
 SURVEY BOOK TEMPLATE
 NOTE BOOK TEMPLATE
 AREAS CHECKED

ORIGINAL SURVEY PLOTTED
 SURVEY BOOK TEMPLATE
 NOTE BOOK TEMPLATE
 AREAS CHECKED



ILLINOIS DEPARTMENT OF TRANSPORTATION
 ILLINOIS ROUTE 22
 FROM US RTE 12 TO BUESCHING RD
 E J & E RAILROAD
 DRAINAGE AND UTILITIES
 STA. 1+650 TO STA. 1+900
 SCALE: 1:500 HORIZ.
 1:50 VERT.
 DATE 07/21/04
 DRAWN BY MAD
 CHECKED BY JIF

Rev. 3-3-05