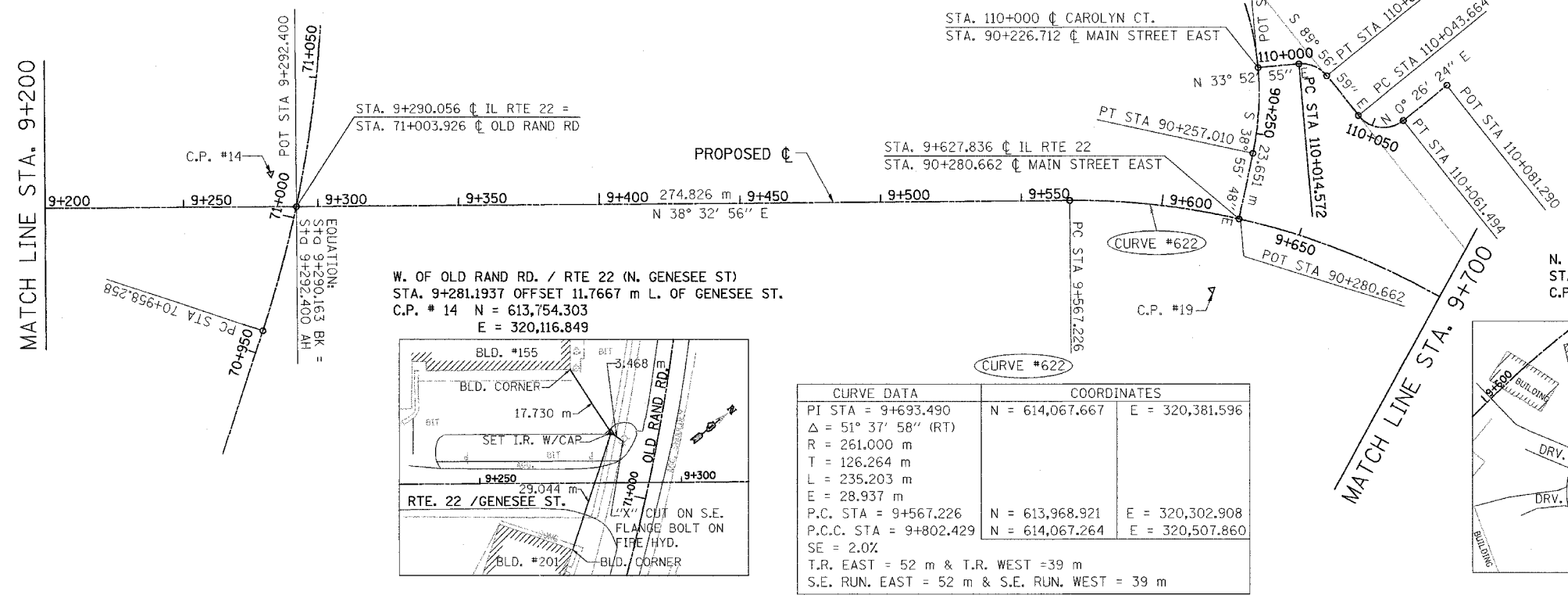
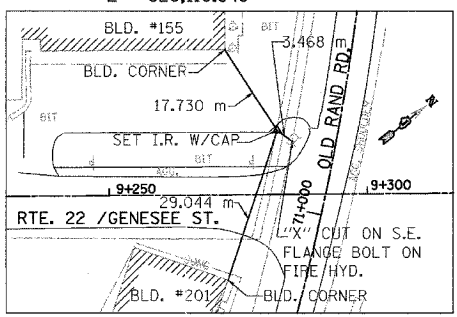


F.A. RTE.	SECTION	COUNTY	TOTAL SHEETS	SHEET NO.
337	19R-1	LAKE	800	57
STA.		TO STA.		
FED. ROAD DIST. NO.		ILLINOIS FED. AID PROJECT		

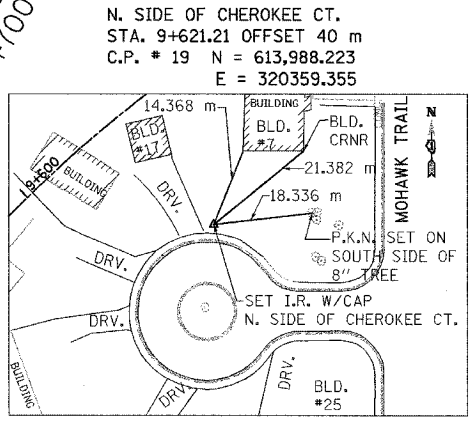
60997



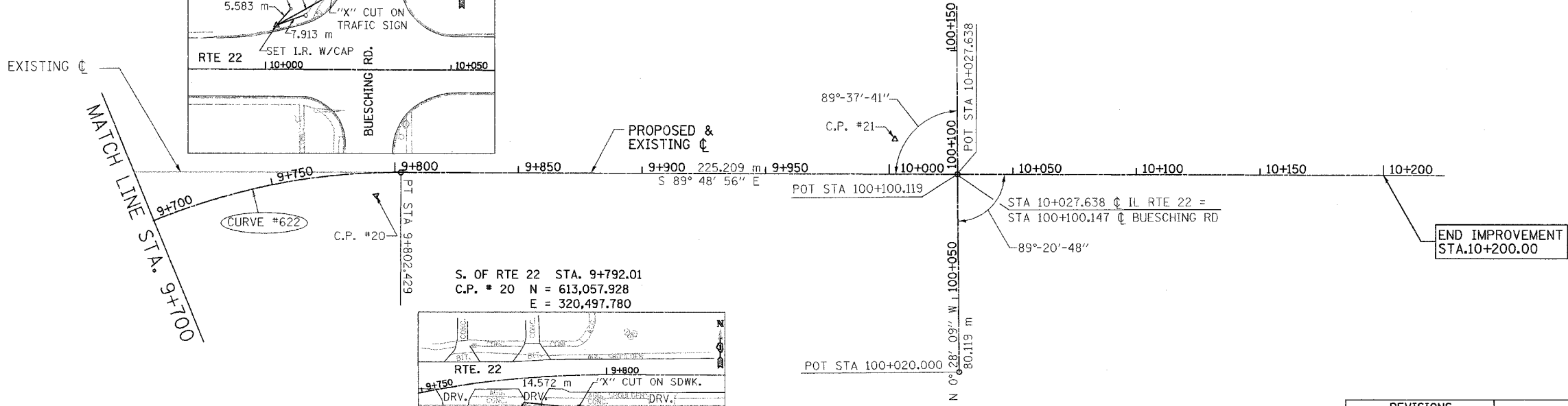
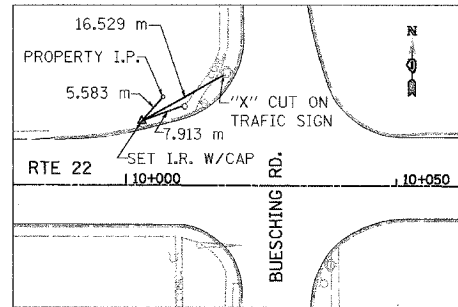
W. OF OLD RAND RD. / RTE 22 (N. GENESEE ST)
 STA. 9+281.1937 OFFSET 11.7667 m L. OF GENESEE ST.
 C.P. # 14 N = 613,754.303
 E = 320,116.849



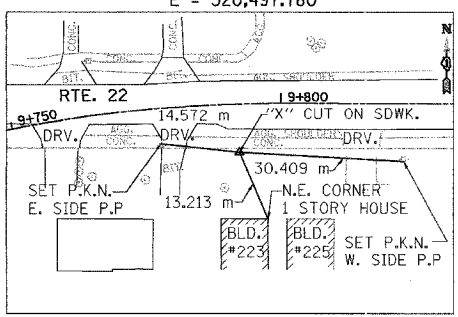
CURVE DATA		COORDINATES	
PI STA = 9+693.490	N = 614,067.667	E = 320,381.596	
$\Delta = 51^\circ 37' 58''$ (RT)			
R = 261,000 m			
T = 126,264 m			
L = 235,203 m			
E = 28,937 m			
P.C. STA = 9+567.226	N = 613,968.921	E = 320,302.908	
P.C.C. STA = 9+802.429	N = 614,067.264	E = 320,507.860	
SE = 2.0%			
T.R. EAST = 52 m & T.R. WEST = 39 m			
S.E. RUN. EAST = 52 m & S.E. RUN. WEST = 39 m			



NW CORNER OF RTE 22 & BUESCHING RD.
 C.P. #21 STA. 10+002.9, OFFSET 11.9367 m L
 N = 614,078.555, E = 320,708.374



S. OF RTE 22 STA. 9+792.01
 C.P. # 20 N = 613,057.928
 E = 320,497.780



REVISIONS	
NAME	DATE

ILLINOIS DEPARTMENT OF TRANSPORTATION
 ILLINOIS ROUTE 22
 FROM US RTE 12 TO BUESCHING RD
 ALIGNMENT, TIES AND
 BENCHMARKS
 STA. 9+200 TO STA. 10+200
 SCALE : DESIGNED BY VAP
 DATE : 07/21/04 CHECKED BY DDL