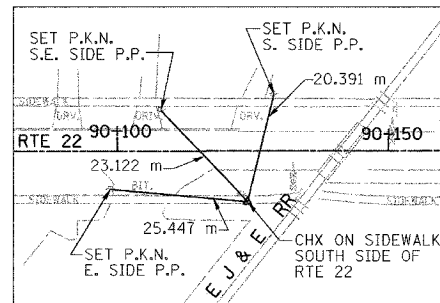


F.A. RTE.	SECTION	COUNTY	TOTAL SHEETS	SHEET NO.
337	19R-1	LAKE	800	59
STA.		TO STA.		
FED. ROAD DIST. NO.		ILLINOIS FED. AID PROJECT		

60997

RTE. 22 STA. 90+124.02 LT.
C.P. # 17 N = 614,058.074
E = 320,209.434



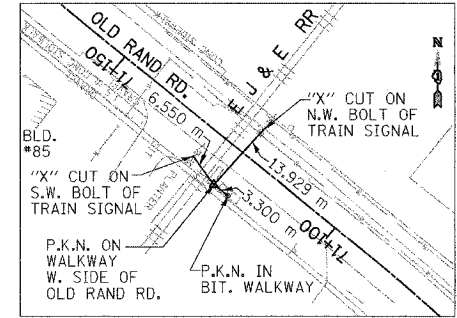
CURVE DATA		COORDINATES	
PI STA = 90+215.188	N = 614,067.229	E = 321,300.592	
Δ = 51° 08' 25" (RT)			
R = 101.000 m			
T = 48.326 m			
L = 90.149 m			
E = 10.966 m			
P.C. STA = 90+166.861	N = 614,067.464	E = 320,252.266	
P.T. STA = 90+257.010	N = 614,029.929	E = 320,330.959	

CURVE DATA		COORDINATES	
PI STA = 110+020.655	N = 614,067.460	E = 320,320.211	
Δ = 56° 10' 07" (RT)			
R = 11.400 m			
T = 6.083 m			
L = 11.176 m			
E = 1.521 m			
P.C. STA = 110+014.572	N = 614,062.410	E = 320,316.820	
P.T. STA = 110+025.748	N = 614,067.455	E = 320,326.294	

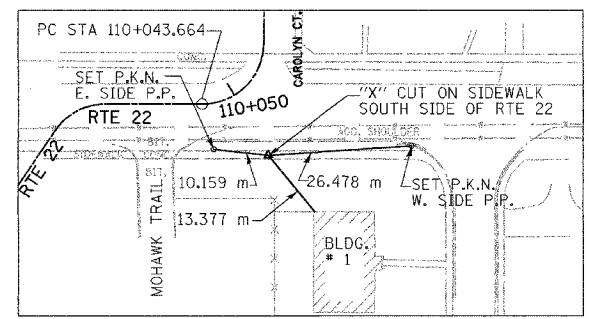
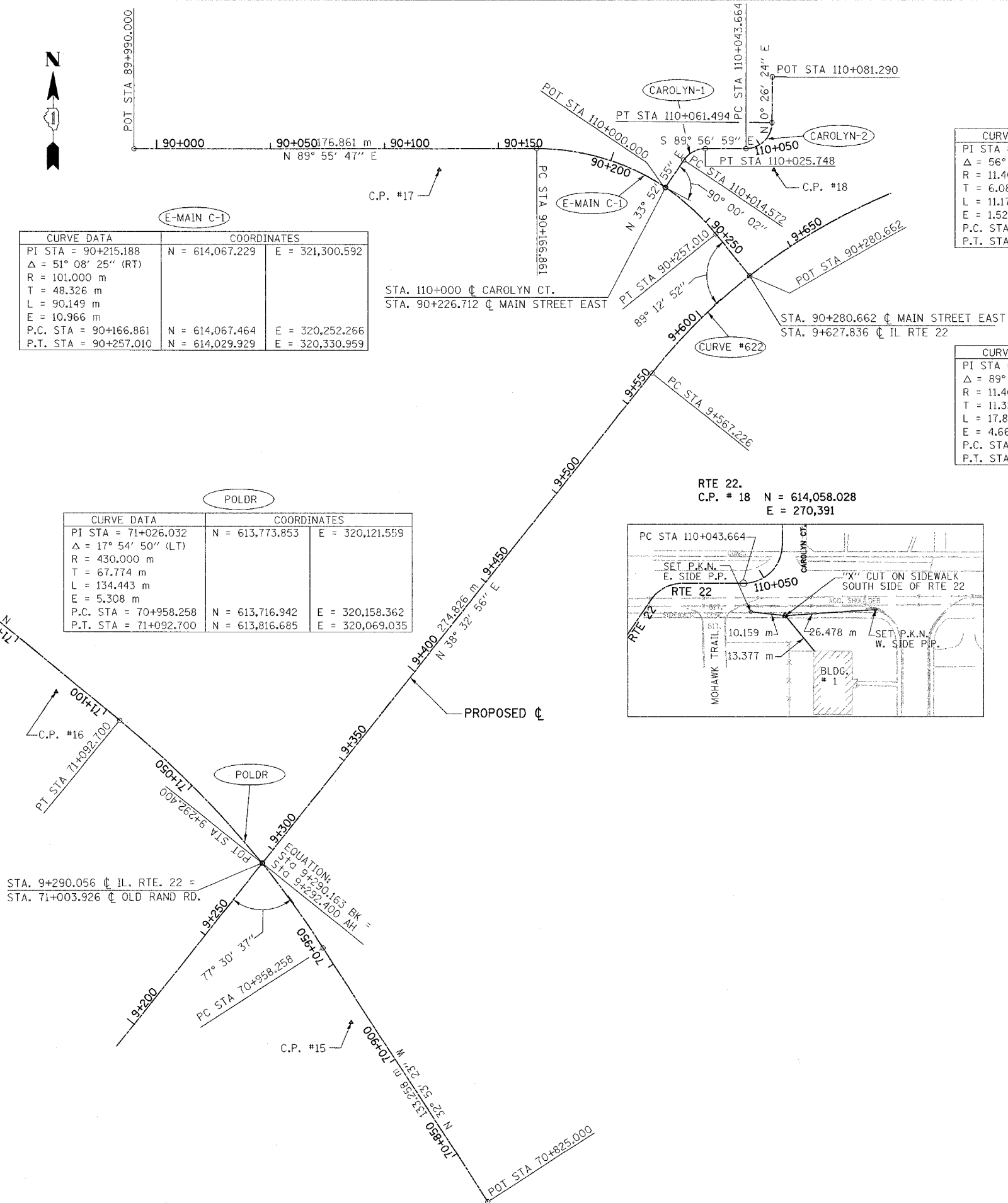
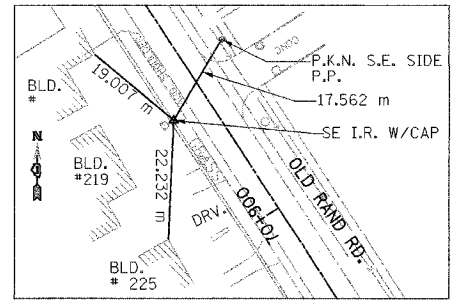
CURVE DATA		COORDINATES	
PI STA = 110+054.987	N = 614,067.460	E = 320,320.211	
Δ = 89° 36' 38" (LT)			
R = 11.400 m			
T = 11.323 m			
L = 17.830 m			
E = 4.668 m			
P.C. STA = 110+043.664	N = 614,067.439	E = 320,344.210	
P.T. STA = 110+061.494	N = 614,078.752	E = 320,355.620	

CURVE DATA		COORDINATES	
PI STA = 71+026.032	N = 613,773.853	E = 320,121.559	
Δ = 17° 54' 50" (LT)			
R = 430.000 m			
T = 67.774 m			
L = 134.443 m			
E = 5.308 m			
P.C. STA = 70+958.258	N = 613,716.942	E = 320,158.362	
P.T. STA = 71+092.700	N = 613,816.685	E = 320,069.035	

OLD RAND ROAD STA. 71+122.29 LT.
C.P. # 16 N = 613,829.180
E = 320,041.093



OLD RAND ROAD STA. 70+924.20 LT.
C.P. # 15 N = 613,684.335
E = 320,170.664



REVISIONS	
NAME	DATE

ILLINOIS DEPARTMENT OF TRANSPORTATION
ILLINOIS ROUTE 22
FROM US RTE 12 TO BUESCHING RD
ALIGNMENT, TIES AND
BENCHMARKS
OLD RAND RD-MAIN ST EAST
SCALE : DESIGNED BY VAP
DATE : 07/21/04 CHECKED BY DDL