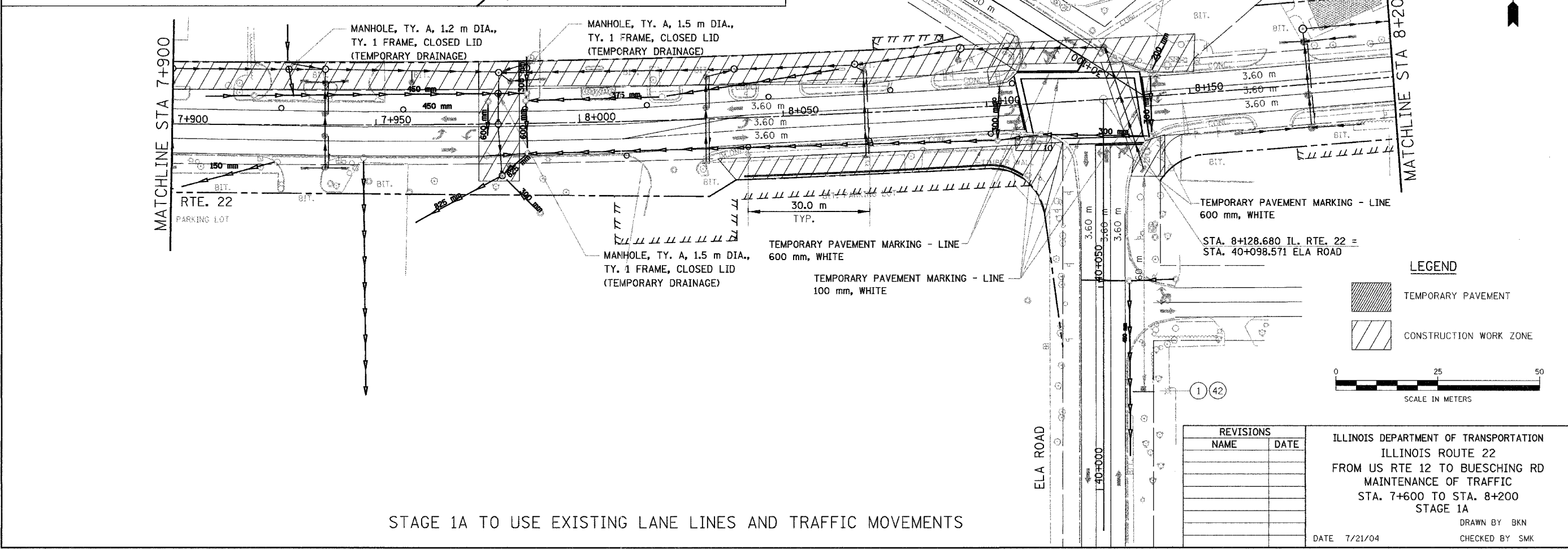
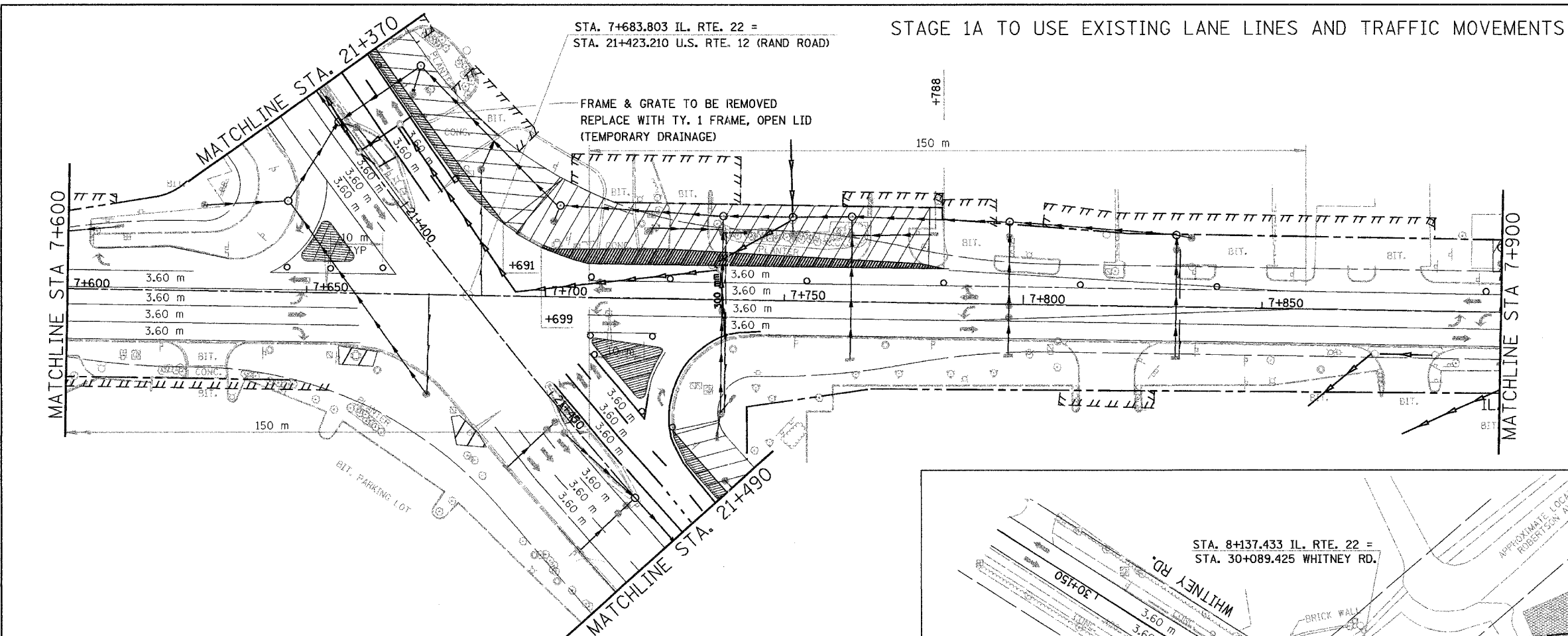
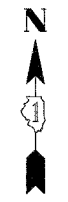


F.A. RTE.	SECTION	COUNTY	TOTAL SHEETS	SHEET NO.
337	19R-1	LAKE	800	97
STA.	TO STA.			
FED. ROAD DIST. NO.	ILLINOIS FED. AID PROJECT			

60997



STAGE 1A TO USE EXISTING LANE LINES AND TRAFFIC MOVEMENTS

REVISIONS	
NAME	DATE

ILLINOIS DEPARTMENT OF TRANSPORTATION  
 ILLINOIS ROUTE 22  
 FROM US RTE 12 TO BUESCHING RD  
 MAINTENANCE OF TRAFFIC  
 STA. 7+600 TO STA. 8+200  
 STAGE 1A  
 DRAWN BY BKN  
 CHECKED BY SMK  
 DATE 7/21/04