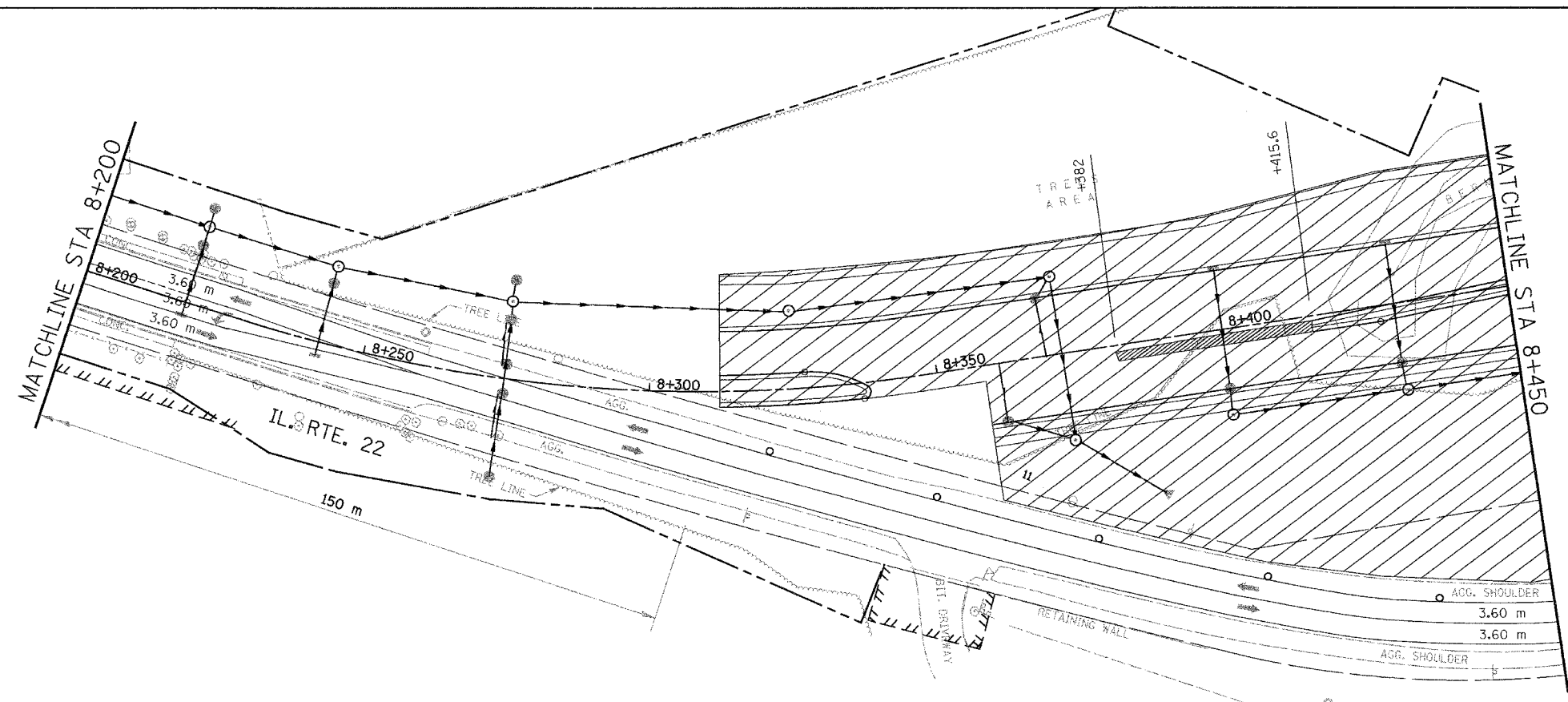
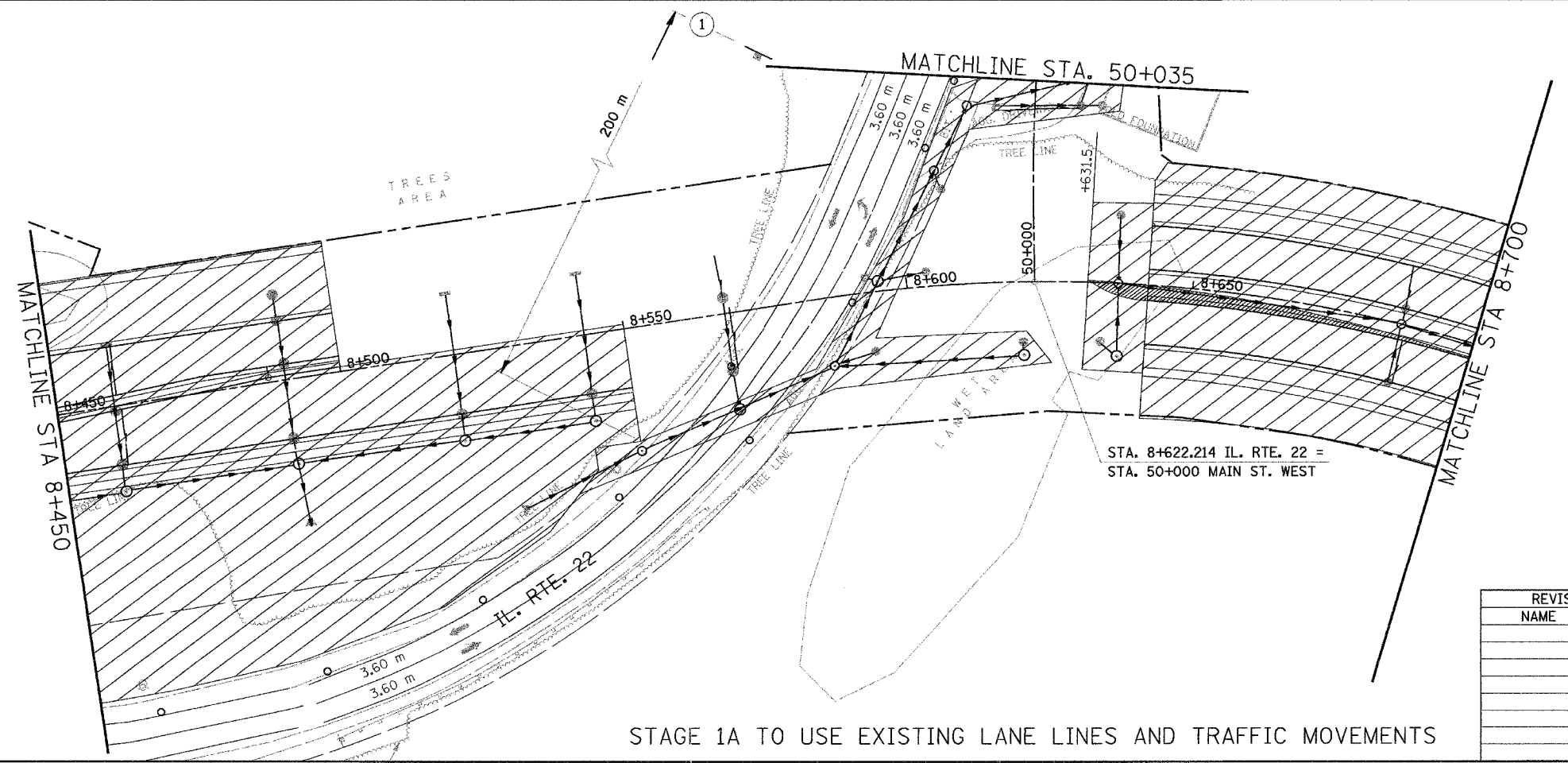


F.A. RTE.	SECTION	COUNTY	TOTAL SHEETS	SHEET NO.
337	19R-1	LAKE	800	98
STA.		TO STA.		
FED. ROAD DIST. NO.		ILLINOIS FED. AID PROJECT		

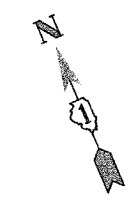
60997



STAGE 1A TO USE EXISTING LANE LINES AND TRAFFIC MOVEMENTS

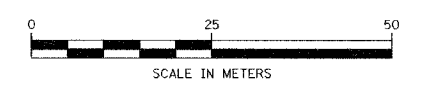


STAGE 1A TO USE EXISTING LANE LINES AND TRAFFIC MOVEMENTS



LEGEND

- TEMPORARY PAVEMENT
- CONSTRUCTION WORK ZONE



REVISIONS	
NAME	DATE

ILLINOIS DEPARTMENT OF TRANSPORTATION
 ILLINOIS ROUTE 22
 FROM US RTE 12 TO BUESCHING RD
 MAINTENANCE OF TRAFFIC
 STA. 8+200 TO STA. 8+700
 STAGE 1A
 DRAWN BY BKN
 CHECKED BY SMK
 DATE 7/21/04

STA. 8+622.214 IL. RTE. 22 =
 STA. 50+000 MAIN ST. WEST