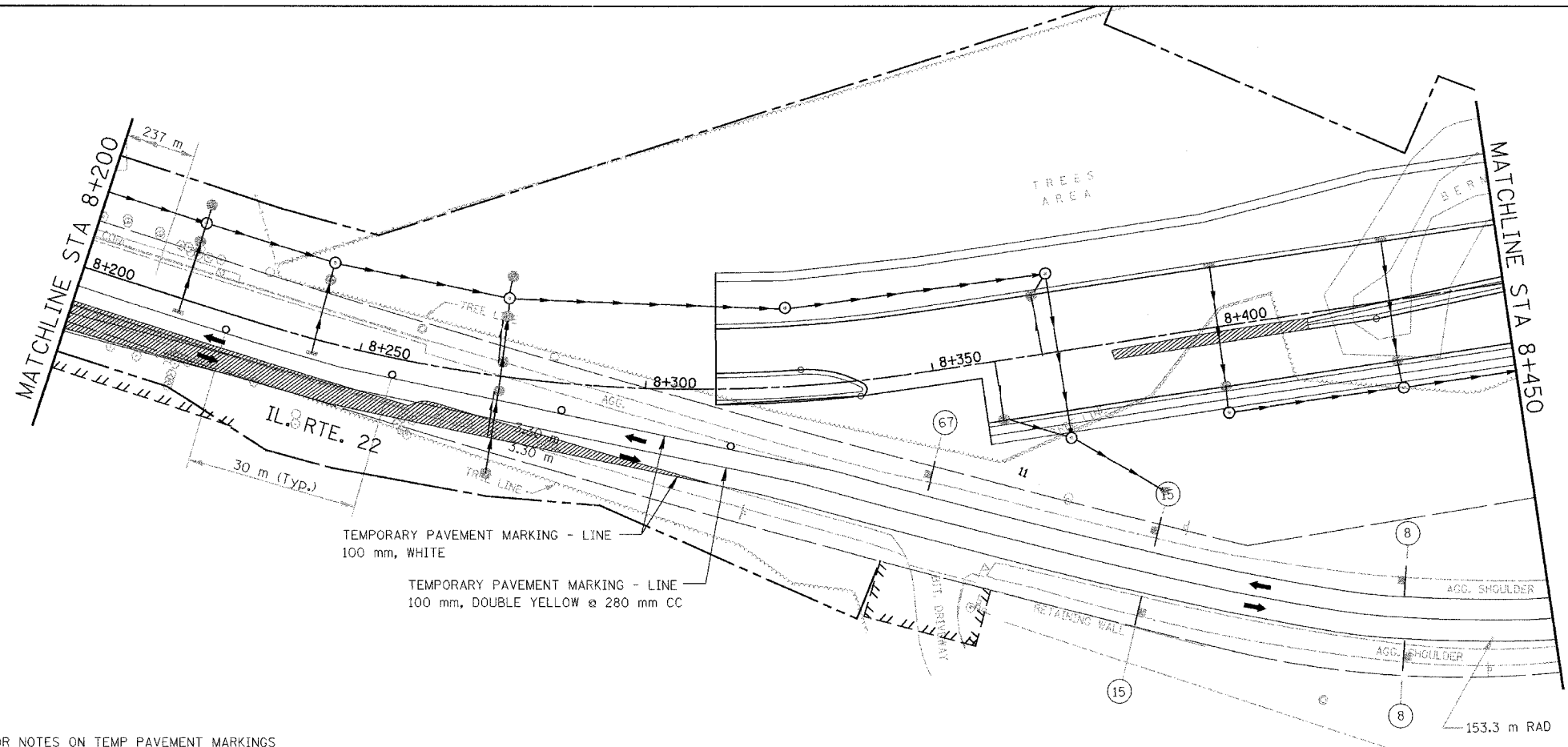
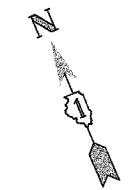
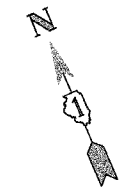
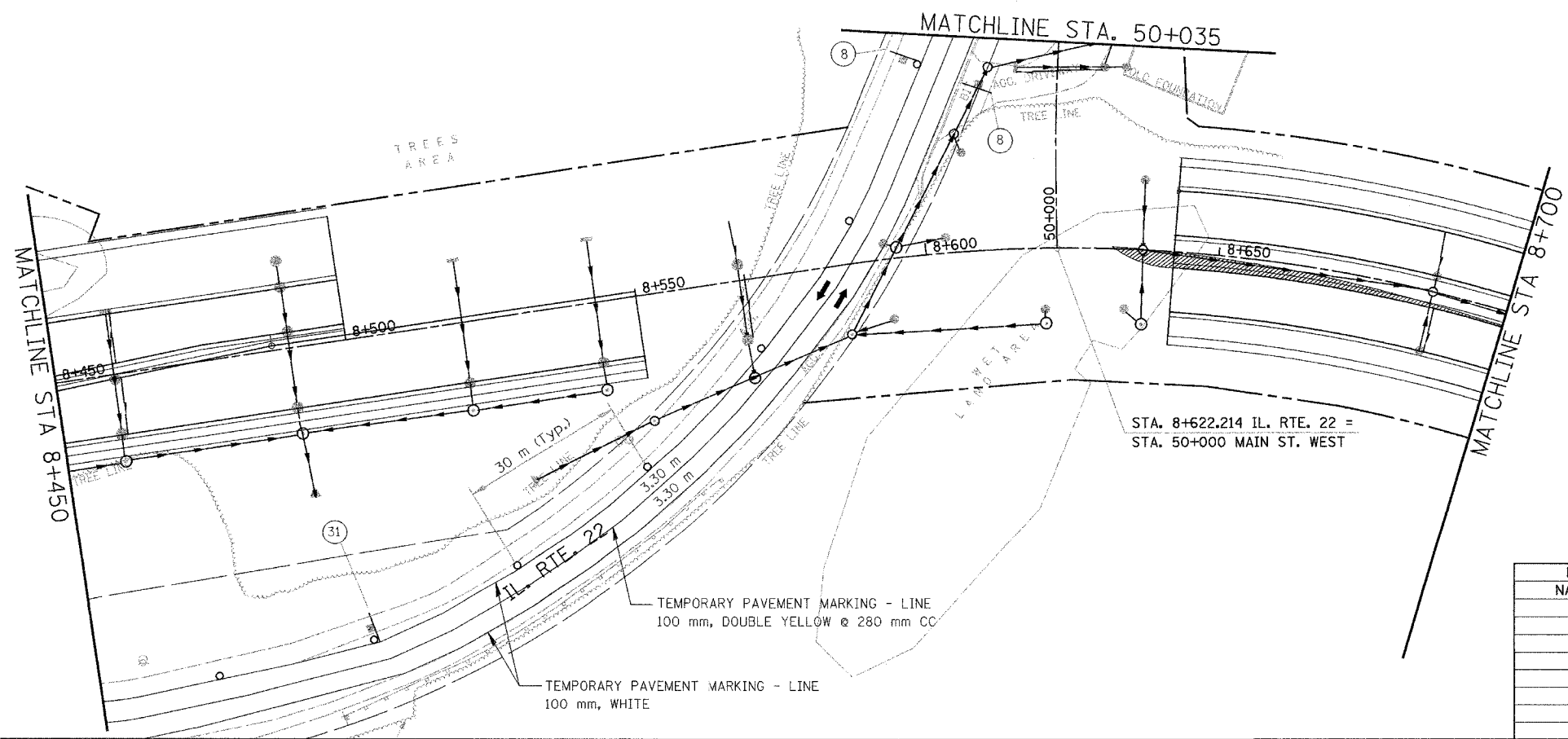


F.A. RTE.	SECTION	COUNTY	TOTAL SHEETS	SHEET NO.
337	19R-1	LAKE	800	133
STA.	TO STA.			
FED. ROAD DIST. NO.	ILLINOIS	FED. AID PROJECT		

60997

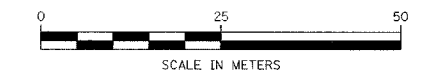


NOTE: SEE SHEET 60 FOR NOTES ON TEMP PAVEMENT MARKINGS



LEGEND

- TEMPORARY PAVEMENT
- CONSTRUCTION WORK ZONE



REVISIONS	
NAME	DATE

ILLINOIS DEPARTMENT OF TRANSPORTATION
 ILLINOIS ROUTE 22
 FROM US RTE 12 TO BUESCHING RD
 MAINTENANCE OF TRAFFIC
 STA. 8+200 TO STA. 8+700
 STAGE 3A
 DRAWN BY BKN
 CHECKED BY SMK
 DATE 7/21/04