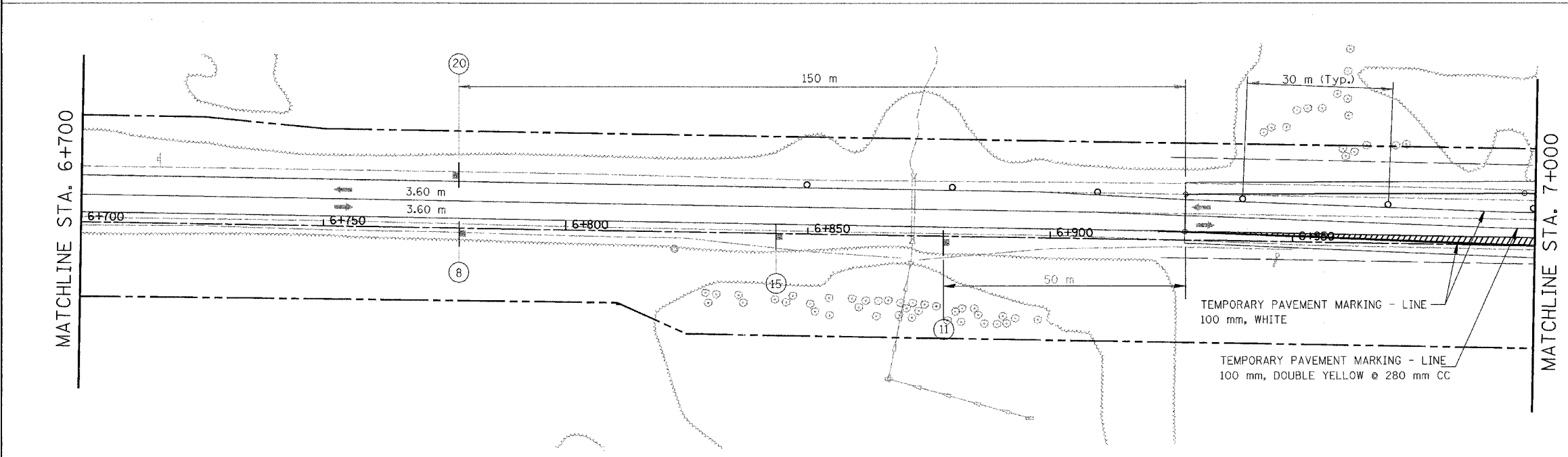
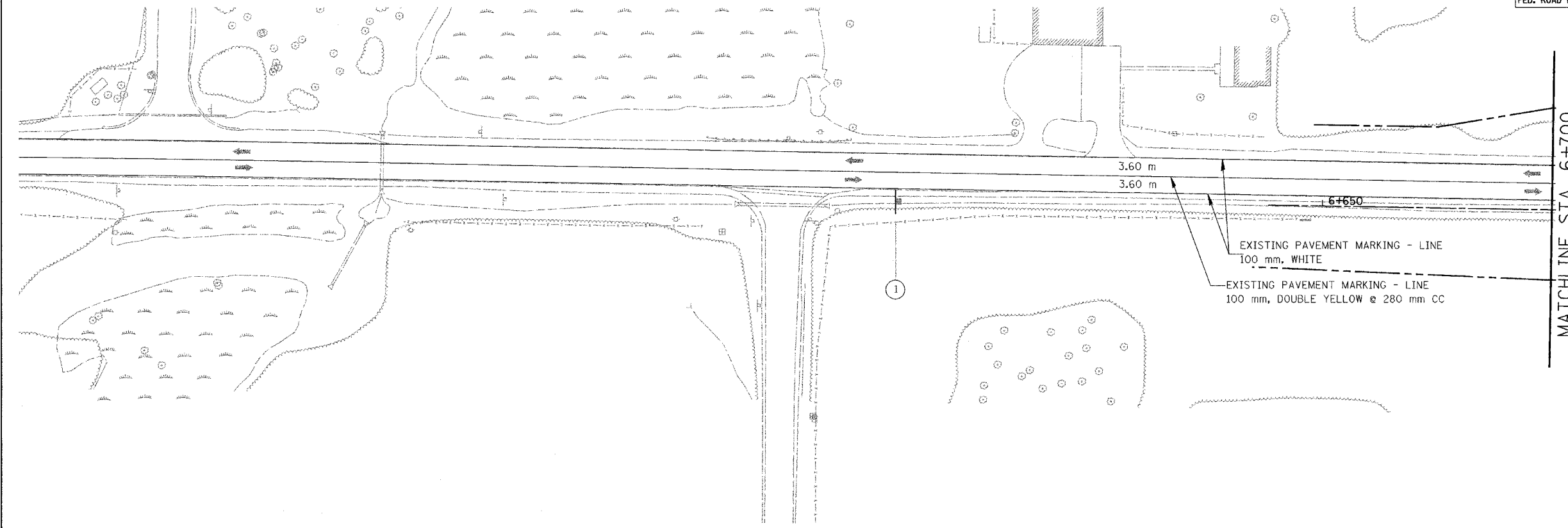


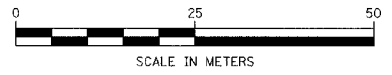
F.A. RTE.	SECTION	COUNTY	TOTAL SHEETS	SHEET NO.
337	19R-1	LAKE	800	137
STA.		TO STA.		
FED. ROAD DIST. NO.		ILLINOIS FED. AID PROJECT		

#60997



LEGEND

	TEMPORARY PAVEMENT
	CONSTRUCTION WORK ZONE



REVISIONS	
NAME	DATE
Rev. Geometry Sta. 11/24/04	
6+922 to 7+440	

ILLINOIS DEPARTMENT OF TRANSPORTATION
 ILLINOIS ROUTE 22
 FROM US RTE 12 TO BUESCHING RD
 MAINTENANCE OF TRAFFIC
 STA. 6+638 TO STA. 7+000
 STAGE 3B

DATE 7/21/04
 DRAWN BY BKN
 CHECKED BY SMK

NOTE: SEE SHEET 60 FOR NOTES ON TEMP PAVEMENT MARKINGS