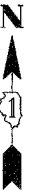


STAGE 4A WEST OVERALL

F.A. RTE.	SECTION	COUNTY	TOTAL SHEETS	SHEET NO.
337	19R-1	LAKE	800	151
STA.		TO STA.		
FED. ROAD DIST. NO.		ILLINOIS FED. AID PROJECT		

#60997



CONSTRUCTION:

1. CONSTRUCT PROPOSED CONCRETE INSIDE LANE ALONG U.S. RTE. 12.
2. CONSTRUCT MEDIAN CURB AND GUTTER AND MEDIAN SURFACE ALONG U.S. RTE. 12.
3. CONSTRUCT PORTION OF E.B. CONCRETE THROUGH AND RIGHT TURN LANES ON IL RTE. 22.
4. CONSTRUCT ENTRANCE TO SUBDIVISION IN STAGES TO KEEP HALF OPEN AT A TIME.
5. CONSTRUCT PORTION OF E.B. CONCRETE LANES ON IL RTE. 22
6. CONSTRUCT WEST HALF OF ELA RD. IMPROVEMENTS.
7. REMOVE OLD IL RTE. 22 EXISTING PAVEMENT AND CONSTRUCT FINAL DETENTION POND.
8. CONSTRUCT PORTION OF E.B. IL RTE. 22 CONCRETE LANES.
9. CONSTRUCT PORTION OF W.B. IL RTE. 22 CONCRETE LANES.
10. CONSTRUCT PORTION OF N.B. AND S.B. CONCRETE LANES WEST MAIN.
11. CONSTRUCT TEMP PAVEMENT CONNECTION FOR ROBERTSON RD.
12. CONSTRUCT TEMPORARY PAVEMENT CONNECTION FOR WEST MAIN BETWEEN EXISTING IL RTE. 22 AND PROPOSED WEST MAIN PAVEMENT.

TRAFFIC:

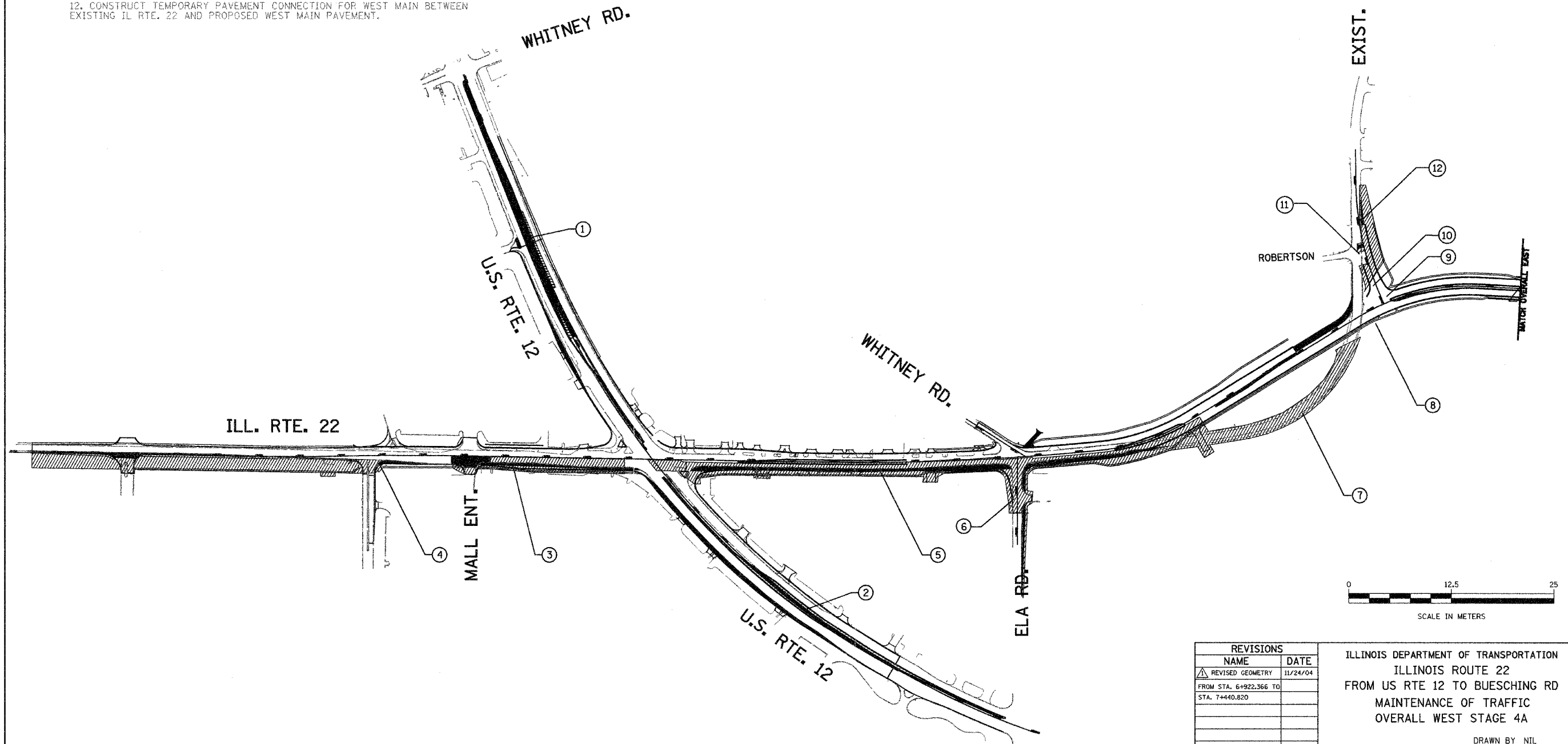
SHIFT 2-LANE THRU TRAFFIC EACH WAY TO OUTSIDE LANES ON U.S. RTE. 12 AS SHOWN.

MAINTAIN IL RTE. 22 TRAFFIC ALONG W.B. LANES CONSTRUCTED IN STAGES 1A, 2A AND 3B AND ALONG TEMPORARY DETOUR PAVEMENT CONSTRUCTED IN STAGE 3B.

ELA RD. TRAFFIC MAINTAINED ON TEMPORARY PAVEMENT CONSTRUCTED IN STAGE 1B.

ACCESS IS MAINTAINED TO THE SUBDIVISION ENTRANCE AS SHOWN IN THE MAINTENANCE OF TRAFFIC PLAN SHEETS FOR STAGE 4A.

ALLOW ONE WAY - IN OPERATION OF DETOUR PAVEMENT TO ROBERTSON FROM ELA/WHITNEY RD. INTERSECTION.



REVISIONS	
NAME	DATE
Δ REVISED GEOMETRY	11/24/04
FROM STA. 6+922.366 TO STA. 7+440.820	

ILLINOIS DEPARTMENT OF TRANSPORTATION
 ILLINOIS ROUTE 22
 FROM US RTE 12 TO BUESCHING RD
 MAINTENANCE OF TRAFFIC
 OVERALL WEST STAGE 4A

DATE 7/21/04
 DRAWN BY NIL
 CHECKED BY SMK