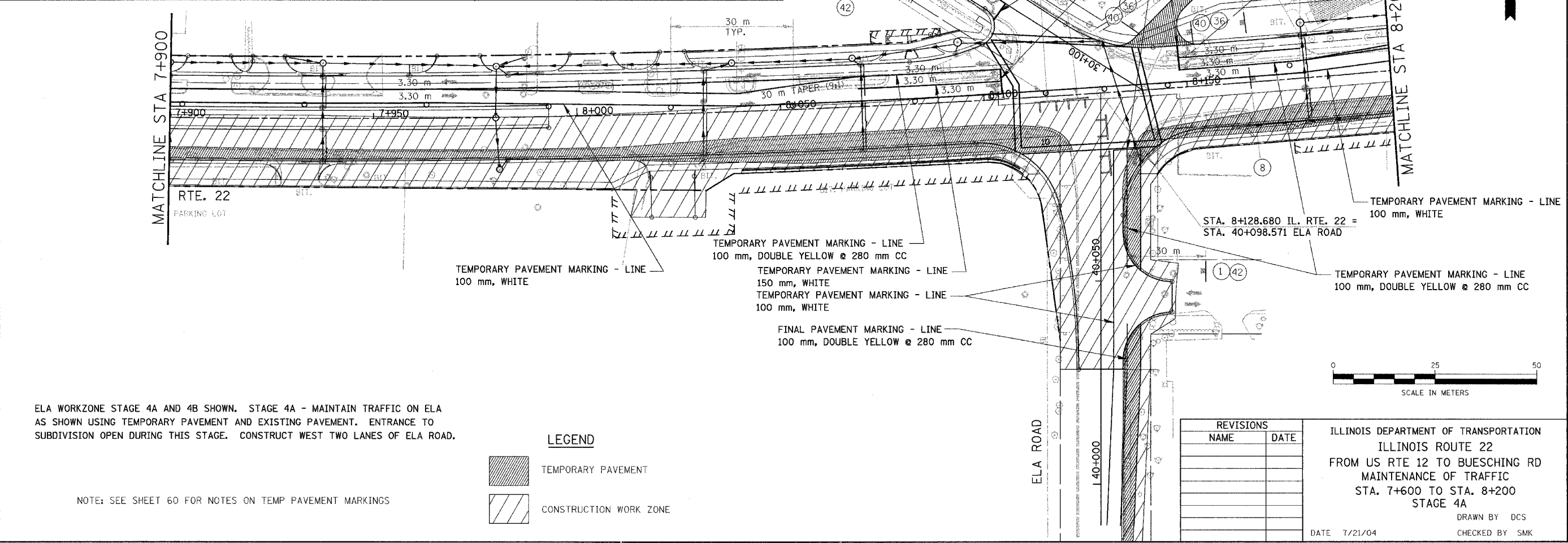
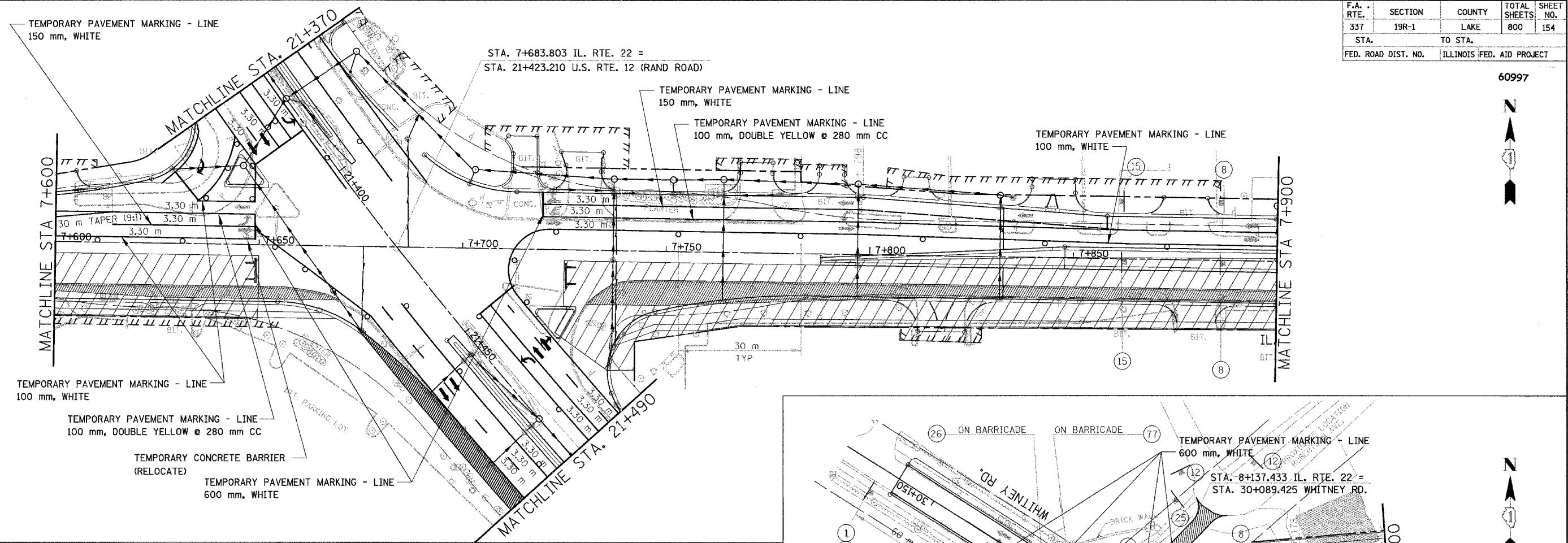


F.A. RTE.	SECTION	COUNTY	TOTAL SHEETS	SHEET NO.
337	19R-1	LAKE	800	154
STA.	TO STA.			
FED. ROAD DIST. NO.	ILLINOIS FED. AID PROJECT			

60997



ELA WORKZONE STAGE 4A AND 4B SHOWN. STAGE 4A - MAINTAIN TRAFFIC ON ELA AS SHOWN USING TEMPORARY PAVEMENT AND EXISTING PAVEMENT. ENTRANCE TO SUBDIVISION OPEN DURING THIS STAGE. CONSTRUCT WEST TWO LANES OF ELA ROAD.

NOTE: SEE SHEET 60 FOR NOTES ON TEMP PAVEMENT MARKINGS

LEGEND

- TEMPORARY PAVEMENT
- CONSTRUCTION WORK ZONE

REVISIONS	
NAME	DATE

ILLINOIS DEPARTMENT OF TRANSPORTATION
 ILLINOIS ROUTE 22
 FROM US RTE 12 TO BUESCHING RD
 MAINTENANCE OF TRAFFIC
 STA. 7+600 TO STA. 8+200
 STAGE 4A
 DRAWN BY DCS
 CHECKED BY SMK
 DATE 7/21/04