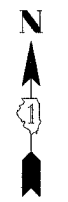

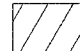


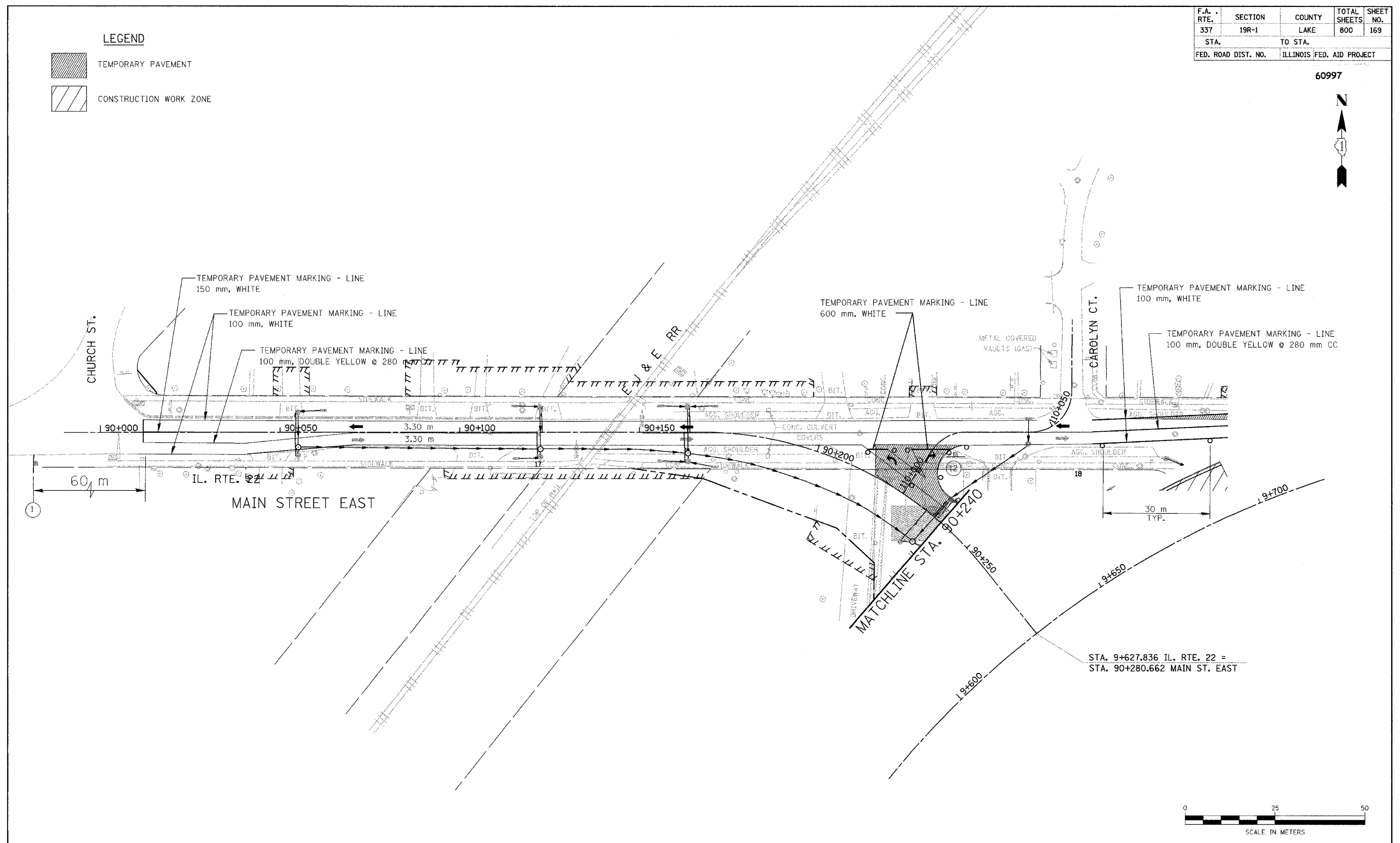
F.A. RTE.	SECTION	COUNTY	TOTAL SHEETS	SHEET NO.
337	19R-1	LAKE	800	169
STA.	TO STA.			
FED. ROAD DIST. NO.	ILLINOIS FED. AID PROJECT			

60997



LEGEND

	TEMPORARY PAVEMENT
	CONSTRUCTION WORK ZONE



NOTE : SEE SHEET 60 FOR NOTES ON TEMP PAVEMENT MARKINGS

NOTE: NO CHANGES FROM STAGES 3A & 3B

REVISIONS	
NAME	DATE

ILLINOIS DEPARTMENT OF TRANSPORTATION
 ILLINOIS ROUTE 22
 FROM US RTE 12 TO BUESCHING RD
 MAIN ST. EAST-MOHAWK TRAIL
 MAINTENANCE OF TRAFFIC
 STA. 90+000 TO STA. 90+240
 STAGE 4A & 4B
 DRAWN BY REZ
 CHECKED BY ACW
 DATE 7/21/04