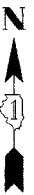
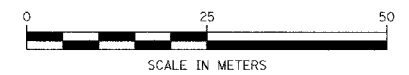
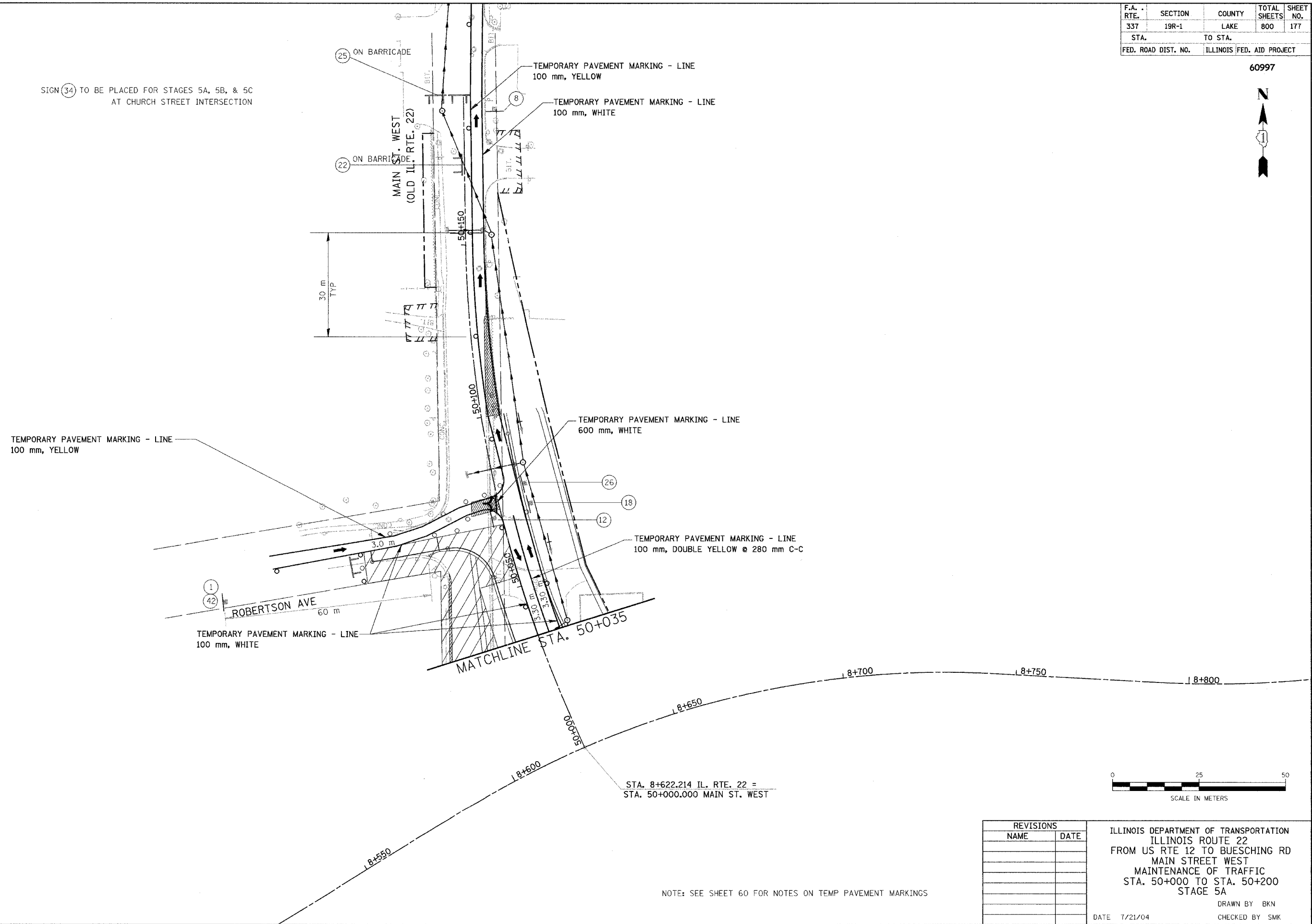


F.A. RTE.	SECTION	COUNTY	TOTAL SHEETS	SHEET NO.
337	19R-1	LAKE	800	177
STA.	TO STA.			
FED. ROAD DIST. NO.	ILLINOIS	FED. AID PROJECT		

60997



SIGN (34) TO BE PLACED FOR STAGES 5A, 5B, & 5C AT CHURCH STREET INTERSECTION



STA. 8+622.214 IL. RTE. 22 =
STA. 50+000.000 MAIN ST. WEST

NOTE: SEE SHEET 60 FOR NOTES ON TEMP PAVEMENT MARKINGS

REVISIONS	
NAME	DATE

ILLINOIS DEPARTMENT OF TRANSPORTATION
ILLINOIS ROUTE 22
FROM US RTE 12 TO BUESCHING RD
MAIN STREET WEST
MAINTENANCE OF TRAFFIC
STA. 50+000 TO STA. 50+200
STAGE 5A
DRAWN BY BKN
CHECKED BY SMK
DATE 7/21/04