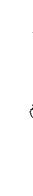
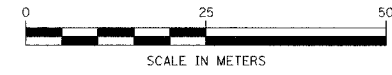
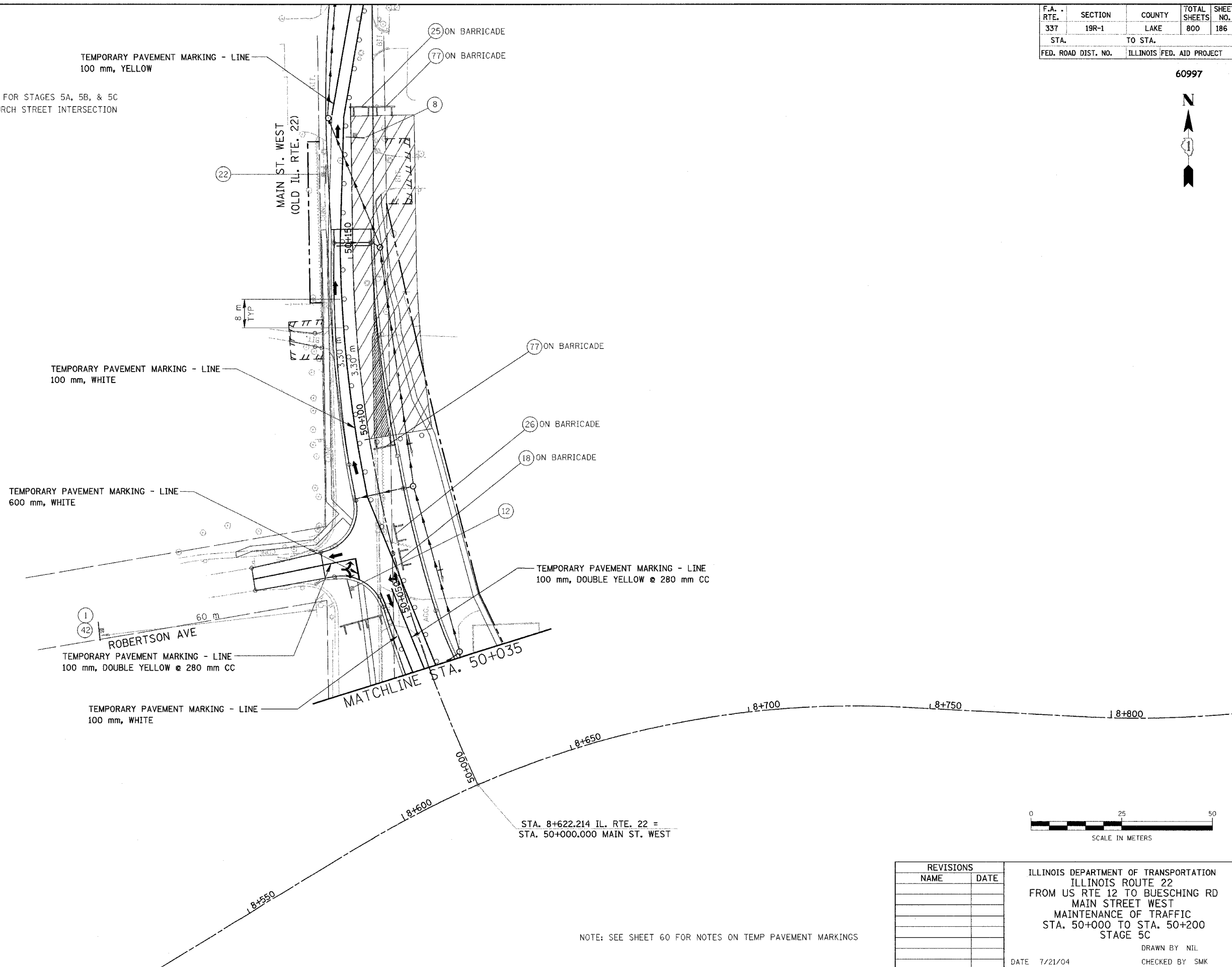


F.A. RTE.	SECTION	COUNTY	TOTAL SHEETS	SHEET NO.
337	19R-1	LAKE	800	186
STA.		TO STA.		
FED. ROAD DIST. NO.		ILLINOIS FED. AID PROJECT		

60997



SIGN (34) TO BE PLACED FOR STAGES 5A, 5B, & 5C AT CHURCH STREET INTERSECTION



REVISIONS	
NAME	DATE

ILLINOIS DEPARTMENT OF TRANSPORTATION
 ILLINOIS ROUTE 22
 FROM US RTE 12 TO BUESCHING RD
 MAIN STREET WEST
 MAINTENANCE OF TRAFFIC
 STA. 50+000 TO STA. 50+200
 STAGE 5C
 DRAWN BY NIL
 CHECKED BY SMK
 DATE 7/21/04

NOTE: SEE SHEET 60 FOR NOTES ON TEMP PAVEMENT MARKINGS