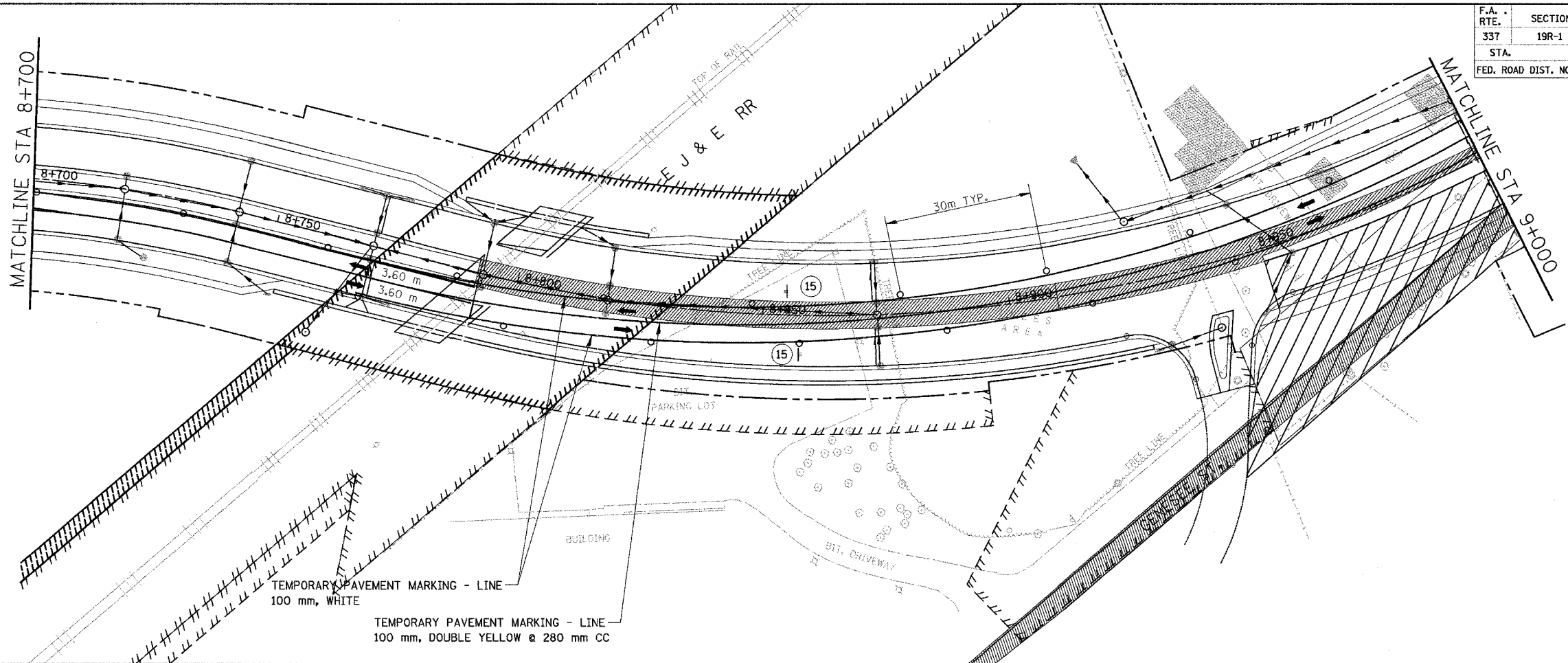
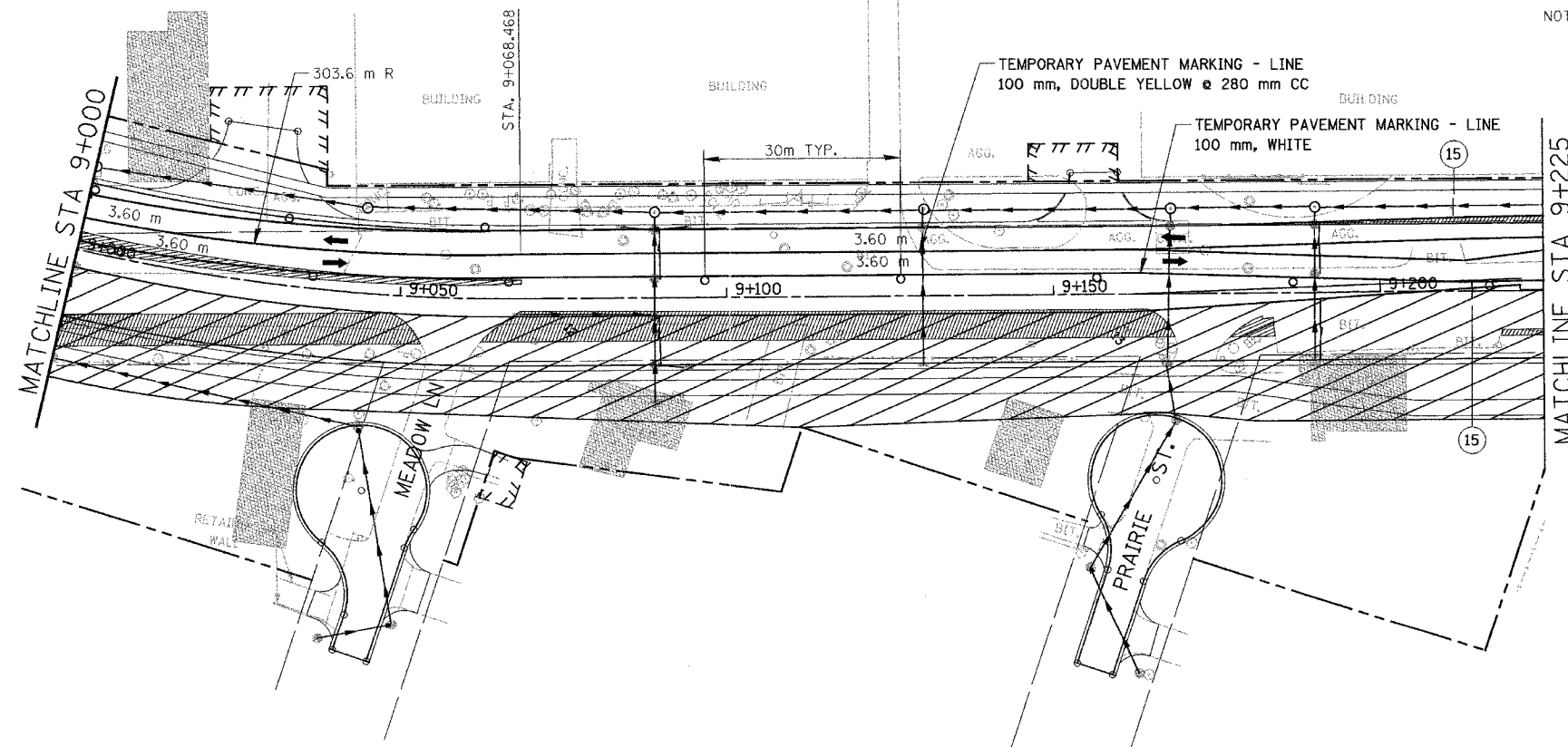


F.A. RTE.	SECTION	COUNTY	TOTAL SHEETS	SHEET NO.
337	19R-1	LAKE	800	188
STA.	TO STA.			
FED. ROAD DIST. NO.	ILLINOIS FED. AID PROJECT			

60997

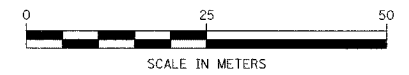


NOTE : SEE SHEET 60 FOR NOTES ON TEMP PAVEMENT MARKINGS



LEGEND

- TEMPORARY PAVEMENT
- CONSTRUCTION WORK ZONE



REVISIONS	
NAME	DATE

ILLINOIS DEPARTMENT OF TRANSPORTATION
 ILLINOIS ROUTE 22
 FROM US RTE 12 TO BUESCHING RD
 MAINTENANCE OF TRAFFIC
 STA. 8+700 TO STA. 9+225
 STAGE 5A, 5B & 5C
 DRAWN BY REZ
 CHECKED BY ACW
 DATE 7/21/04