
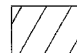


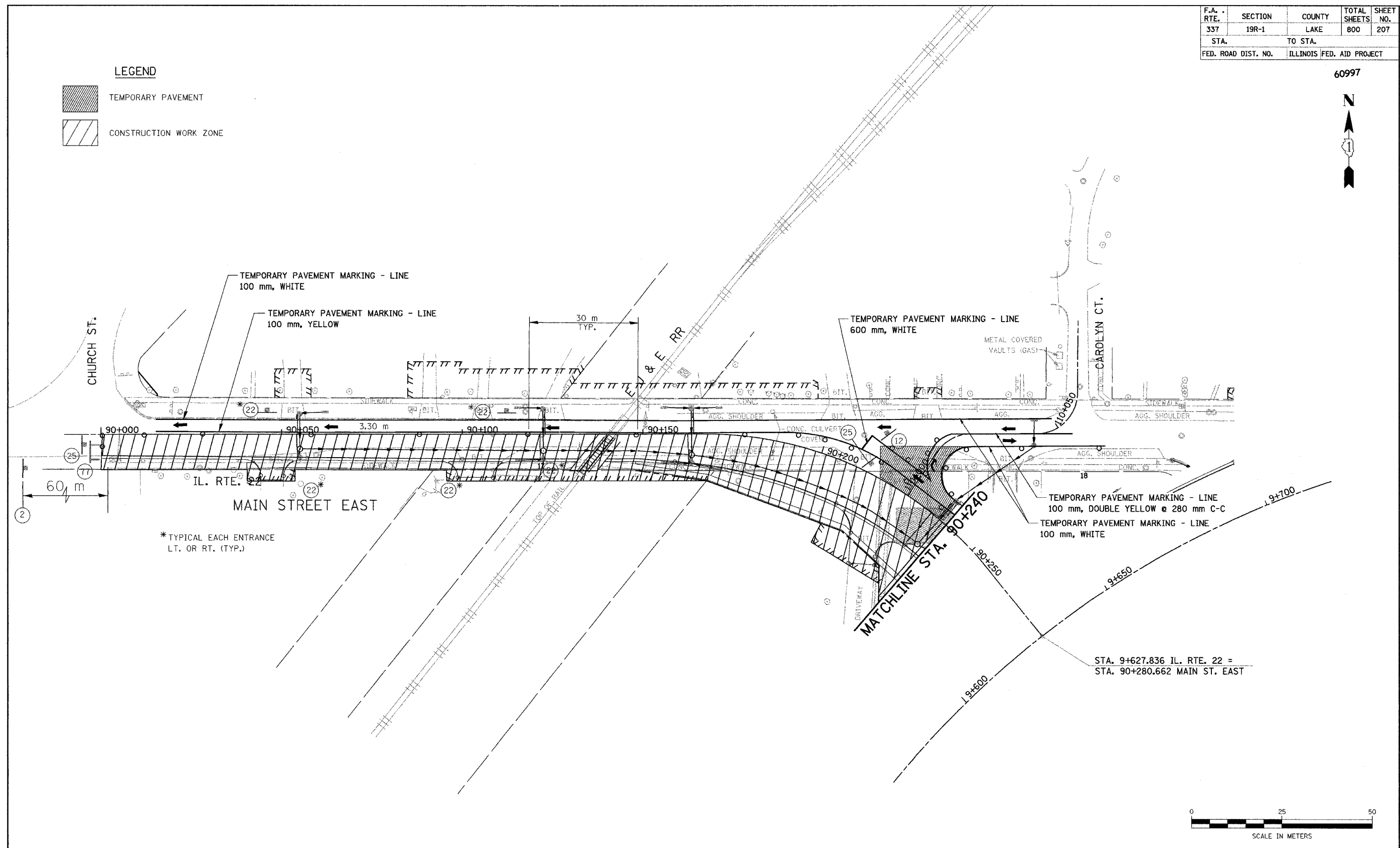
60997



LEGEND

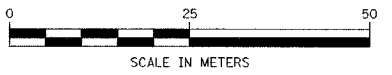
 TEMPORARY PAVEMENT

 CONSTRUCTION WORK ZONE



* TYPICAL EACH ENTRANCE
LT. OR RT. (TYP.)

STA. 9+627.836 IL. RTE. 22 =
STA. 90+280.662 MAIN ST. EAST



NOTE : SEE SHEET 60 FOR NOTES ON TEMP PAVEMENT MARKINGS

REVISIONS	
NAME	DATE

ILLINOIS DEPARTMENT OF TRANSPORTATION
ILLINOIS ROUTE 22
FROM US RTE 12 TO BUESCHING RD
MAIN ST. EAST-MOHAWK TRAIL
MAINTENANCE OF TRAFFIC
STA. 90+000 TO STA. 90+240
STAGE 6A

DRAWN BY REZ
CHECKED BY ACW

DATE 7/21/04