

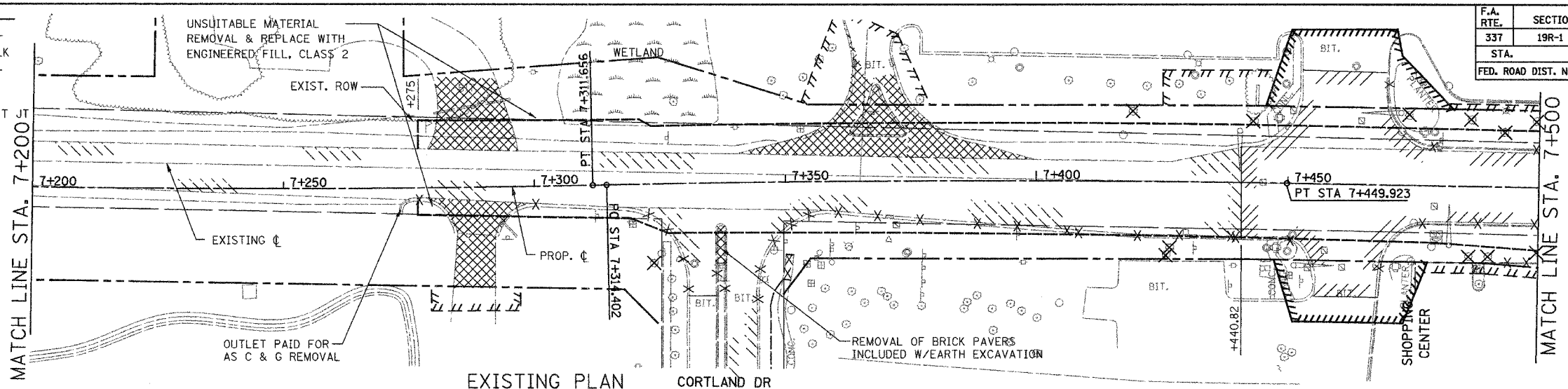
F.A. RTE.	SECTION	COUNTY	TOTAL SHEETS	SHEET NO.
337	19R-1	LAKE	800	223
STA.		TO STA.		
FED. ROAD DIST. NO.		ILLINOIS FED. AID PROJECT		

#60997

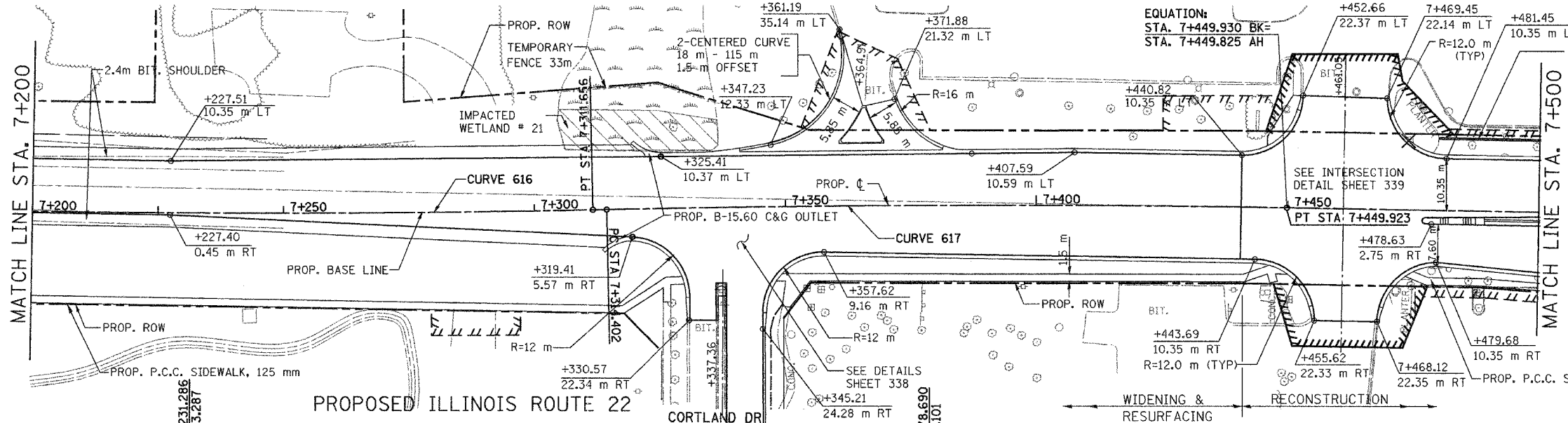


**LEGEND**

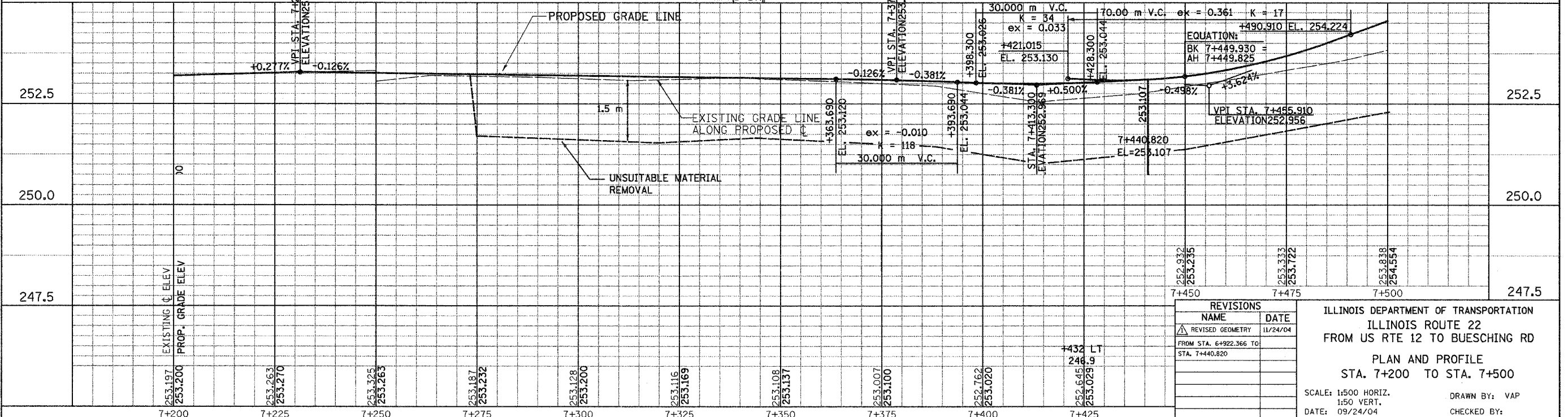
	PAVEMENT REMOVAL
	DRIVEWAY, SIDEWALK & MEDIAN REMOVAL
	BIT SURF REMOVAL
	BIT SURF REM BUTT
	C & G REM
	10" TREE REMOVAL



PROP. CURVE 616  
 PI STA = 7+253.131  
 $\Delta = 2^\circ 11' 57''$  (LT)  
 $R = 3,050.000$  m  
 $T = 58.539$  m  
 $L = 117.063$  m  
 $E = 0.562$  m  
 $e = \dots$   
 $T.R. = \dots$  m  
 $S.E. = NC$   
 P.C. STA = 7+194.593  
 P.T. STA = 7+311.656



PROP. CURVE 617  
 PI STA = 7+382.171  
 $\Delta = 2^\circ 12' 26''$  (RT)  
 $R = 3,517.854$  m  
 $T = 67.769$  m  
 $L = 135.521$  m  
 $E = 0.653$  m  
 $e = \dots$   
 $T.R. = \dots$  m  
 $S.E. = NC$   
 P.C. STA = 7+314.402  
 P.T. STA = 7+449.923



**REVISIONS**

NAME	DATE
REVISED GEOMETRY	11/24/04
FROM STA. 6+922.366 TO STA. 7+440.820	

ILLINOIS DEPARTMENT OF TRANSPORTATION  
 ILLINOIS ROUTE 22  
 FROM US RTE 12 TO BUESCHING RD  
 PLAN AND PROFILE  
 STA. 7+200 TO STA. 7+500  
 SCALE: 1:500 HORIZ.  
 1:50 VERT.  
 DATE: 09/24/04  
 DRAWN BY: VAP  
 CHECKED BY:

FINAL SURVEY PLOTTED  
 NOTE BOOK TEMPLATE AREAS CHECKED

BY	DATE

ORIGINAL SURVEY PLOTTED  
 NOTE BOOK TEMPLATE AREAS CHECKED

BY	DATE