

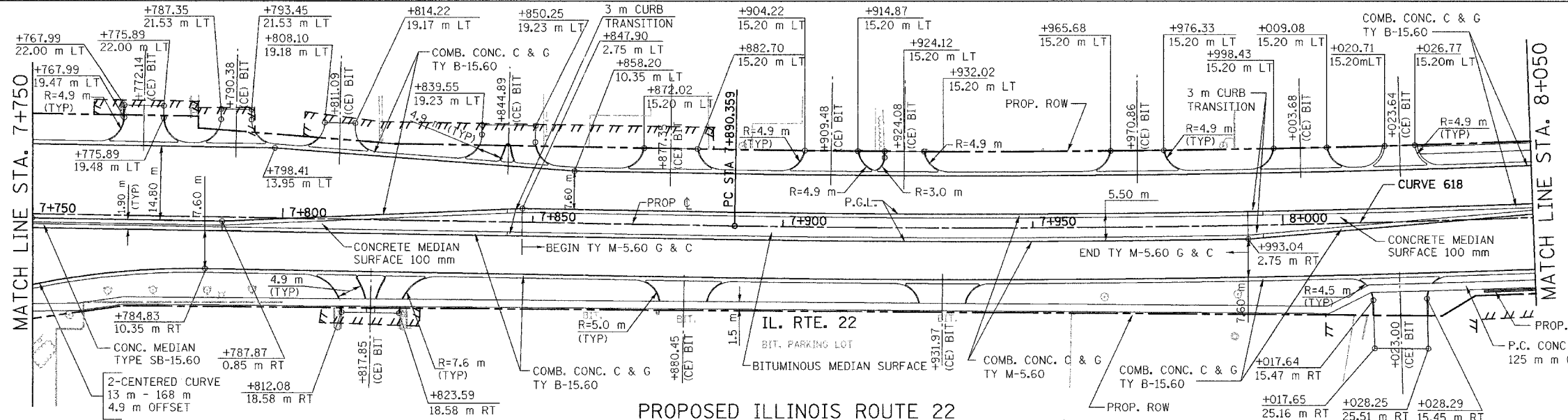
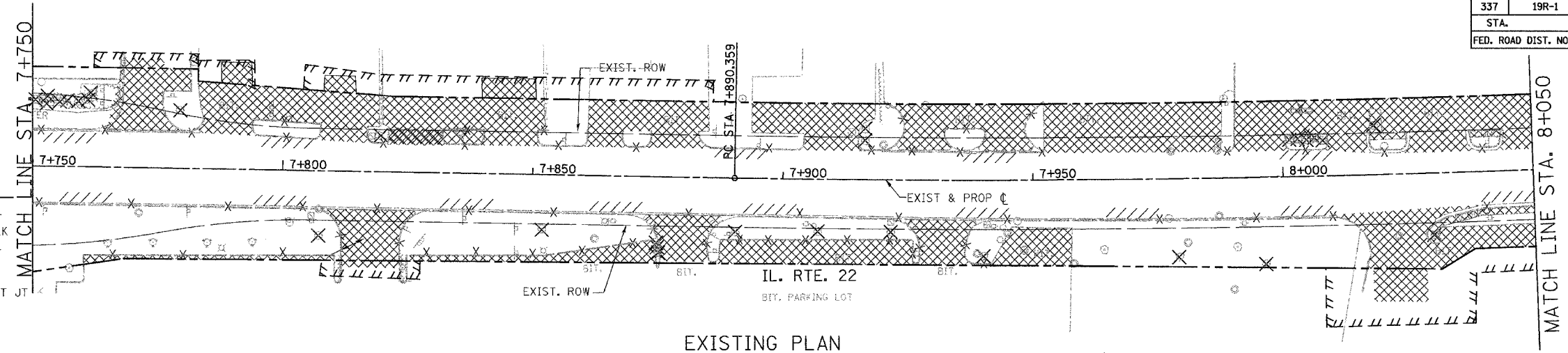
F.A. RTE.	SECTION	COUNTY	TOTAL SHEETS	SHEET NO.
337	19R-1	LAKE	800	225
STA.		TO STA.		
FED. ROAD DIST. NO.		ILLINOIS FED. AID PROJECT		

60997



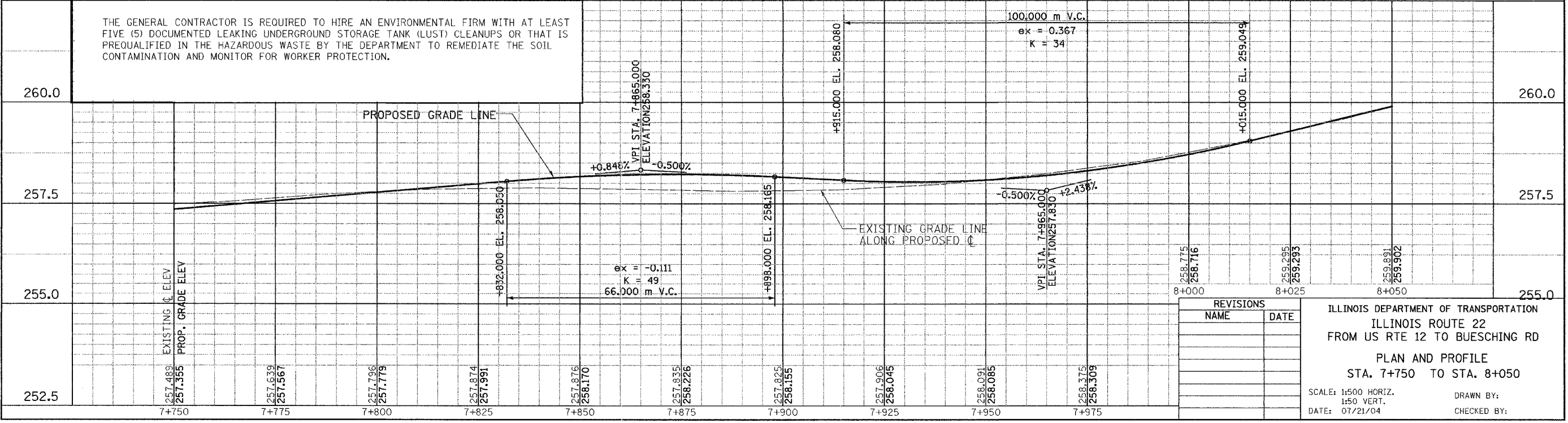
LEGEND

	PAVEMENT REMOVAL
	DRIVEWAY, SIDEWALK & MEDIAN REMOVAL
	BIT SURF REMOVAL
	BIT SURF REM BUTT JT
	C & G REM
	10" TREE REMOVAL



PROP. CURVE 618
 PI STA = 8+060.564
 $\Delta = 6^\circ 41' 38''$ (LT)
 R = 2,910.449 m
 T = 170.206 m
 L = 340.024 m
 E = 4.973 m
 $e =$ ----- m
 T.R. = ----- m
 S.E. RUN. = NC
 P.C. STA = 7+890.359
 P.C.C. STA = 8+230.383

THE GENERAL CONTRACTOR IS REQUIRED TO HIRE AN ENVIRONMENTAL FIRM WITH AT LEAST FIVE (5) DOCUMENTED LEAKING UNDERGROUND STORAGE TANK (LUST) CLEANUPS OR THAT IS PREQUALIFIED IN THE HAZARDOUS WASTE BY THE DEPARTMENT TO REMEDIATE THE SOIL CONTAMINATION AND MONITOR FOR WORKER PROTECTION.



REVISIONS

NAME	DATE

ILLINOIS DEPARTMENT OF TRANSPORTATION
 ILLINOIS ROUTE 22
 FROM US RTE 12 TO BUESCHING RD
 PLAN AND PROFILE
 STA. 7+750 TO STA. 8+050
 SCALE: 1:500 HORIZ.
 1:50 VERT.
 DATE: 07/21/04
 DRAWN BY:
 CHECKED BY:

FINAL SURVEY PLOTTED
 NOTE BOOK TEMPLATE
 AREAS CHECKED

BY	DATE

ORIGINAL SURVEY PLOTTED
 NOTE BOOK TEMPLATE
 AREAS CHECKED

BY	DATE