

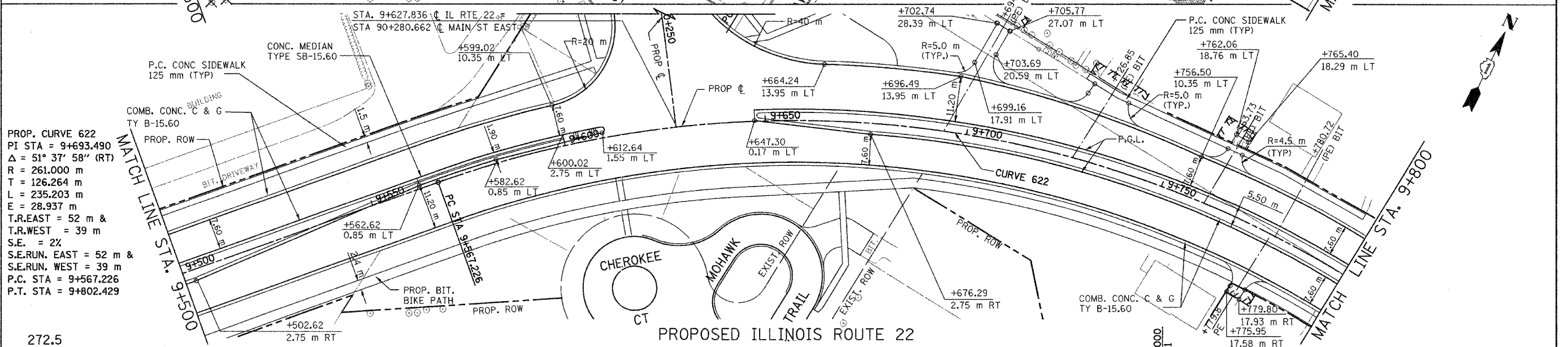
F.A. RTE.	SECTION	COUNTY	TOTAL SHEETS	SHEET NO.
337	19R-1	LAKE	800	231
STA.		TO STA.		
FED. ROAD DIST. NO.		ILLINOIS FED. AID PROJECT		

#60997

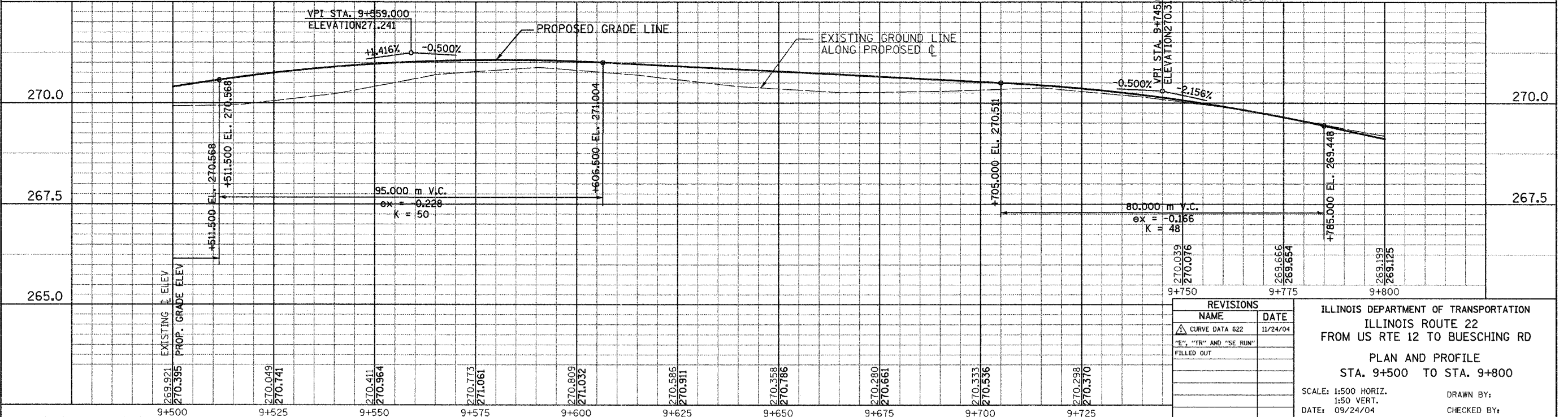
LEGEND

	PAVEMENT REMOVAL
	DRIVEWAY, SIDEWALK & MEDIAN REMOVAL
	BIT SURF REMOVAL
	BIT SURF REM BUTT JT
	C & G REM
	10" TREE REMOVAL

FOR LEGEND SEE SHEET NO.



PROP. CURVE 622
 PI STA = 9+693.490
 $\Delta = 51^\circ 37' 58''$ (RT)
 R = 261.000 m
 T = 126.264 m
 L = 235.203 m
 E = 28.937 m
 T.R.EAST = 52 m &
 T.R.WEST = 39 m
 S.E. = 2X
 S.E.RUN. EAST = 52 m &
 S.E.RUN. WEST = 39 m
 P.C. STA = 9+567.226
 P.T. STA = 9+802.429



REVISIONS

NAME	DATE
△ CURVE DATA 622	11/24/04
"E", "TR" AND "SE RUN"	FILLED OUT

ILLINOIS DEPARTMENT OF TRANSPORTATION
 ILLINOIS ROUTE 22
 FROM US RTE 12 TO BUESCHING RD
 PLAN AND PROFILE
 STA. 9+500 TO STA. 9+800

SCALE: 1:500 HORIZ.
 1:50 VERT.
 DATE: 09/24/04

DRAWN BY:
 CHECKED BY:

FINAL SURVEY PLOTTED

BY	DATE

NOTE BOOK TEMPLATE AREAS CHECKED

ORIGINAL SURVEY PLOTTED

BY	DATE

NOTE BOOK TEMPLATE AREAS CHECKED

Rev.