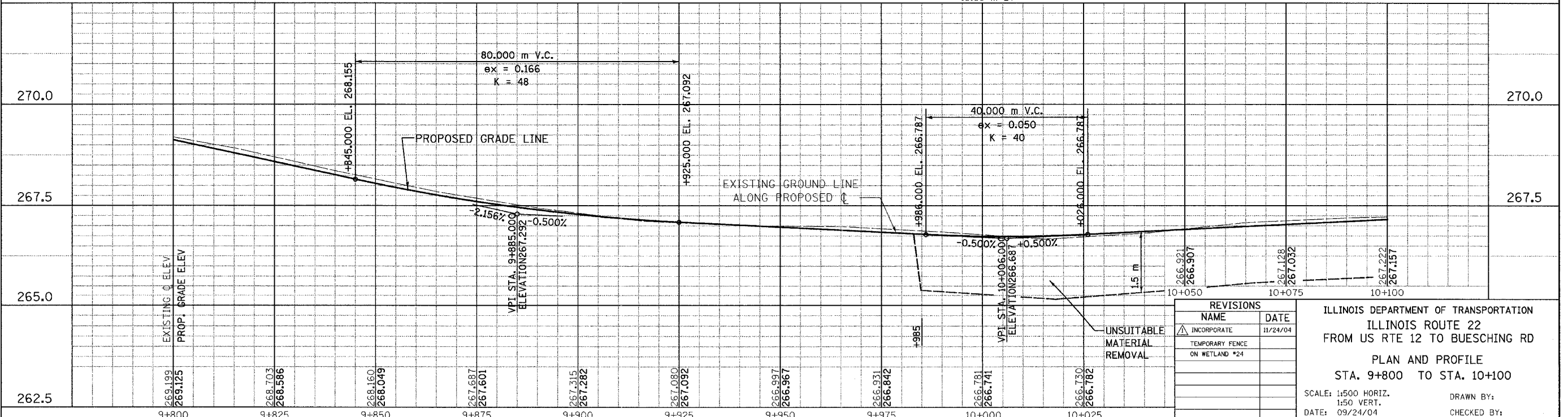
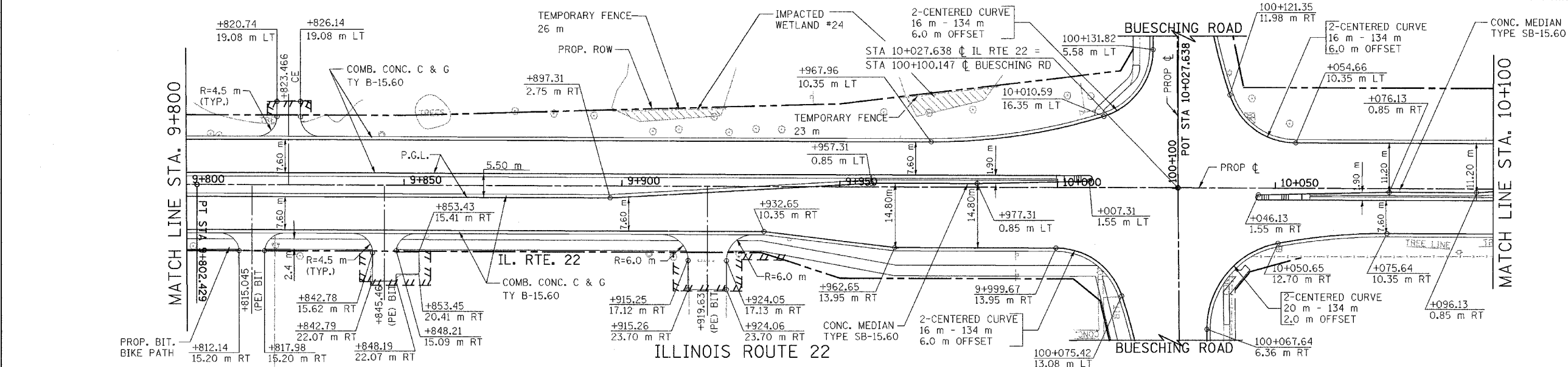
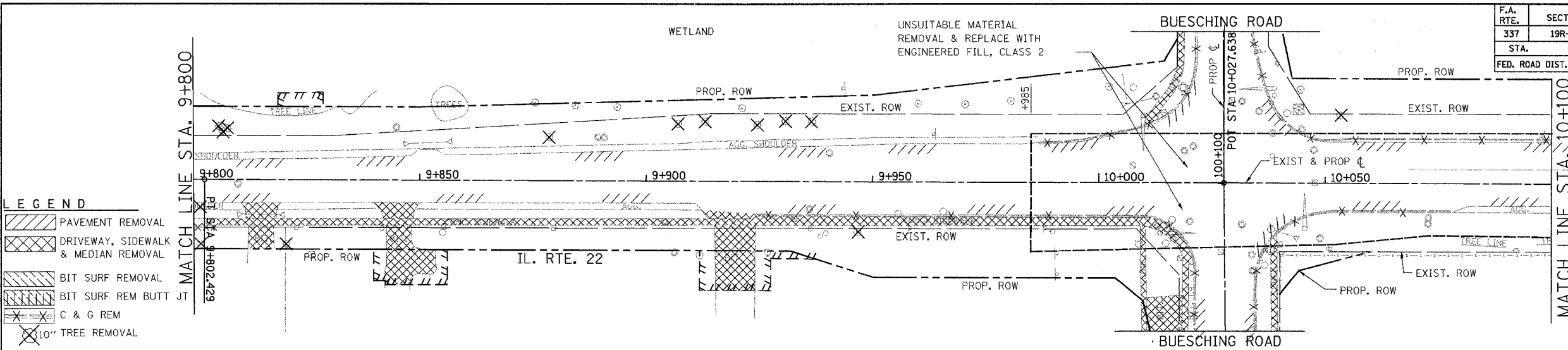


F.A. RTE.	SECTION	COUNTY	TOTAL SHEETS	SHEET NO.
337	19R-1	LAKE	800	232
STA.	TO STA.			
FED. ROAD DIST. NO.	ILLINOIS FED. AID PROJECT			

#60997



LEGEND

- PAVEMENT REMOVAL
- DRIVEWAY, SIDEWALK & MEDIAN REMOVAL
- BIT SURF REMOVAL
- BIT SURF REM BUTT JT
- C & G REM
- 10" TREE REMOVAL

DATE	BY
DATE	BY

FINAL SURVEY PLOTTED
NOTE BOOK TEMPLATE NO. AREAS CHECKED

DATE	BY
DATE	BY

ORIGINAL SURVEY PLOTTED
NOTE BOOK TEMPLATE NO. AREAS CHECKED

REVISIONS

NAME	DATE
INCORPORATE	11/24/04
TEMPORARY FENCE ON WETLAND #24	

ILLINOIS DEPARTMENT OF TRANSPORTATION
ILLINOIS ROUTE 22
FROM US RTE 12 TO BUESCHING RD
PLAN AND PROFILE
STA. 9+800 TO STA. 10+100

SCALE: 1:500 HORIZ.
1:50 VERT.
DATE: 09/24/04

DRAWN BY:
CHECKED BY: