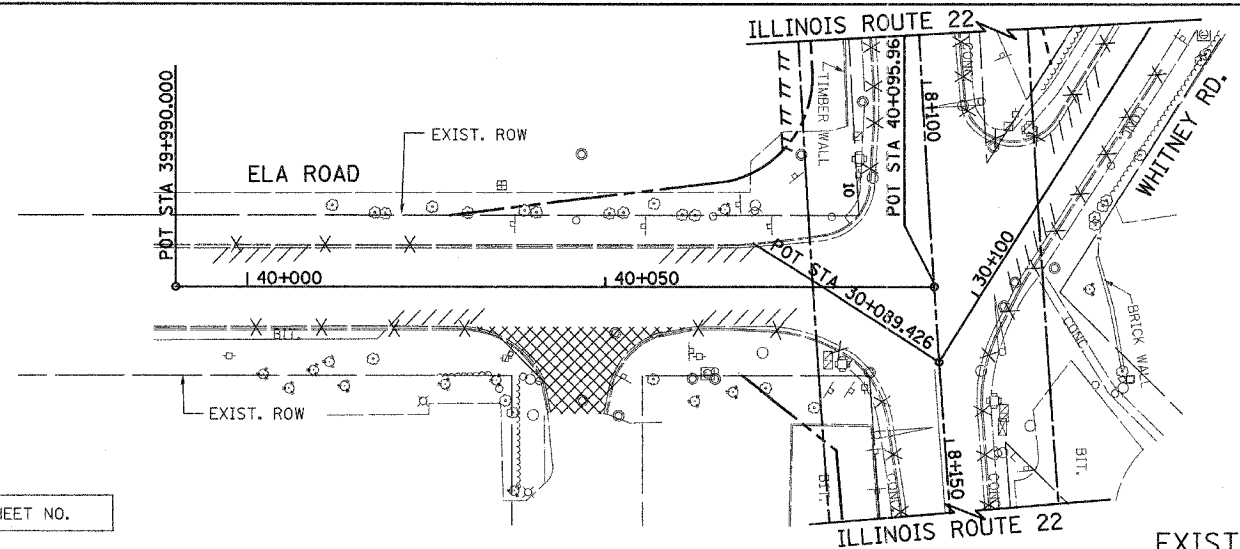


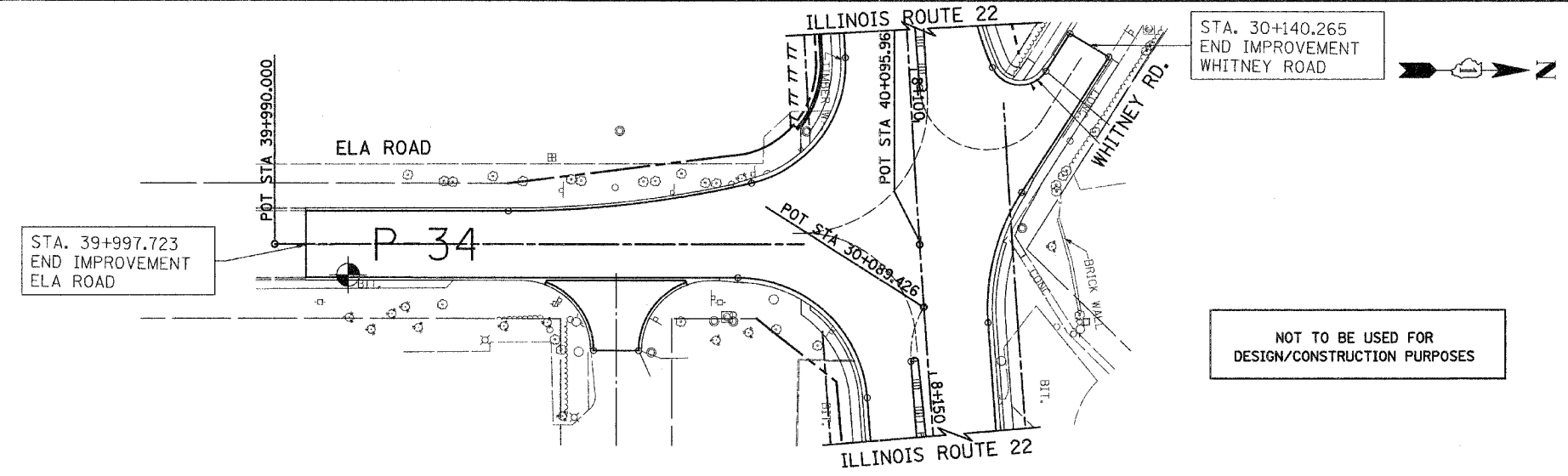
F.A. RTE.	SECTION	COUNTY	TOTAL SHEETS	SHEET NO.
337	19R-1	LAKE	800	246T
STA.	TO STA.			
FED. ROAD DIST. NO.	ILLINOIS FED. AID PROJECT		CONTRACT NO. 60997	

FINAL SURVEY	BY	DATE
SURVEYED		
PLOTTED		
NOTE BOOK		
TEMPLATE		
AREAS CHECKED		
NO.		



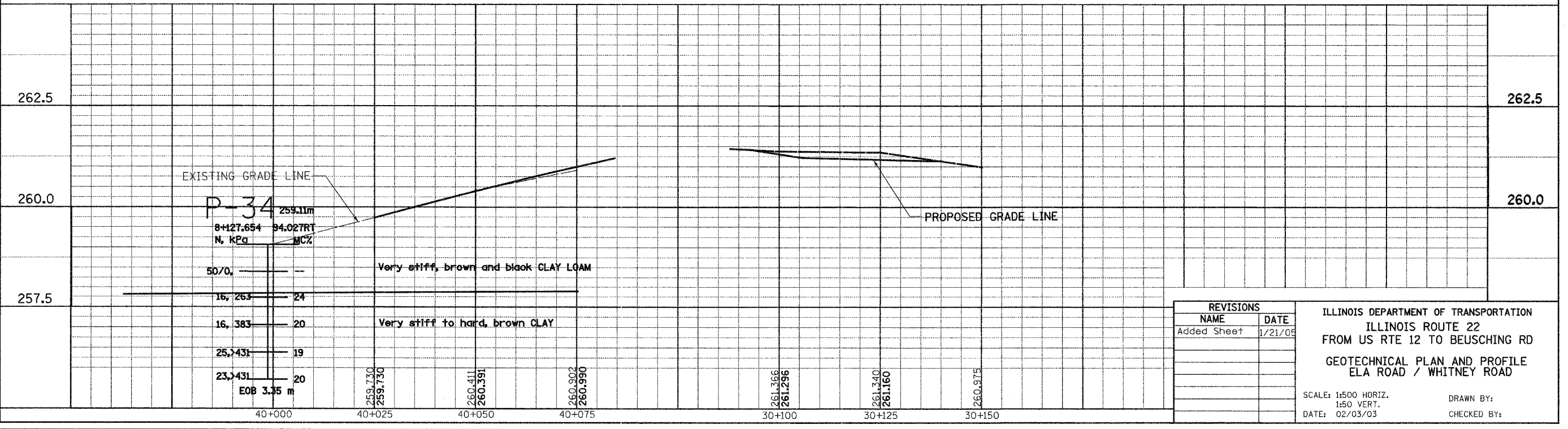
FOR LEGEND SEE SHEET NO.

EXISTING PLAN



PROPOSED ELA - WHITNEY ROAD

ORIGINAL SURVEY	BY	DATE
SURVEYED		
PLOTTED		
NOTE BOOK		
TEMPLATE		
AREAS CHECKED		
NO.		



REVISIONS	
NAME	DATE
Added Sheet	1/21/09

ILLINOIS DEPARTMENT OF TRANSPORTATION  
 ILLINOIS ROUTE 22  
 FROM US RTE 12 TO BEUSCHING RD  
 GEOTECHNICAL PLAN AND PROFILE  
 ELA ROAD / WHITNEY ROAD

SCALE: 1:500 HORIZ.  
 1:50 VERT.  
 DATE: 02/03/03

DRAWN BY:  
 CHECKED BY:

C:\111\10911103\10911103.dwg 7/21/2005 3:55:21 PM