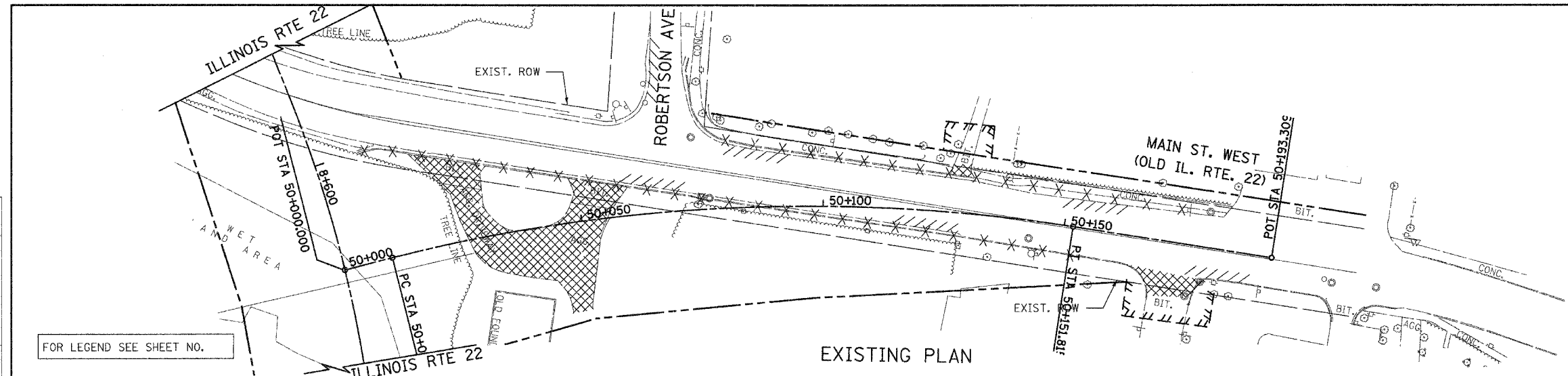


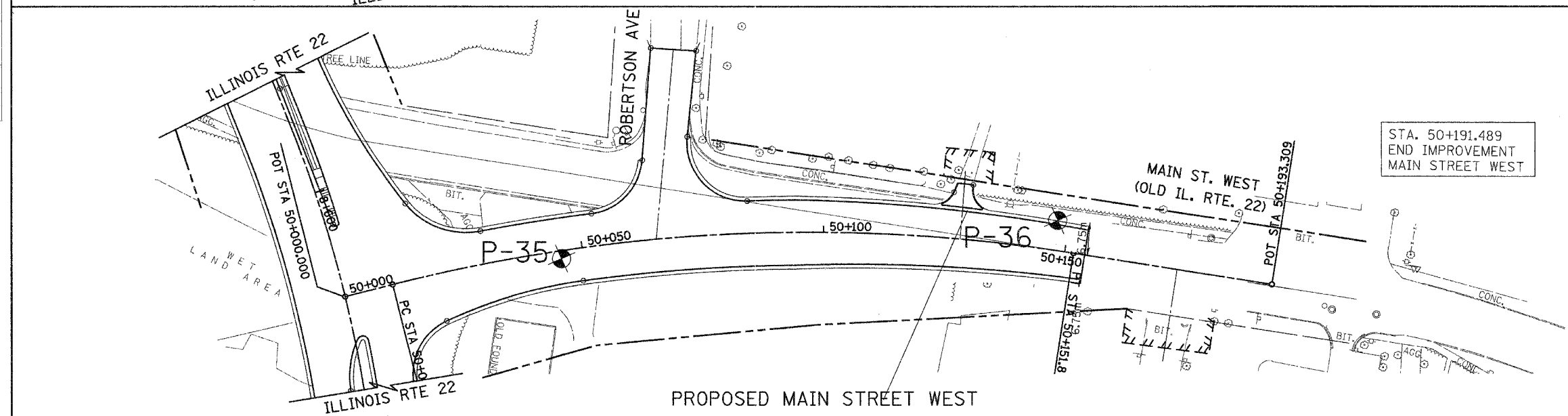
F.A. RTE.	SECTION	COUNTY	TOTAL SHEETS	SHEET NO.
337	19R-1	LAKE	800	246U
STA.	TO STA.			
FED. ROAD DIST. NO.	ILLINOIS FED. AID PROJECT		CONTRACT NO. 60997	

FINAL SURVEY	BY	DATE
SURVEYED		
PLOTTED		
NOTE BOOK		
TEMPLATE		
AREAS CHECKED		
NO.		



FOR LEGEND SEE SHEET NO.

EXISTING PLAN

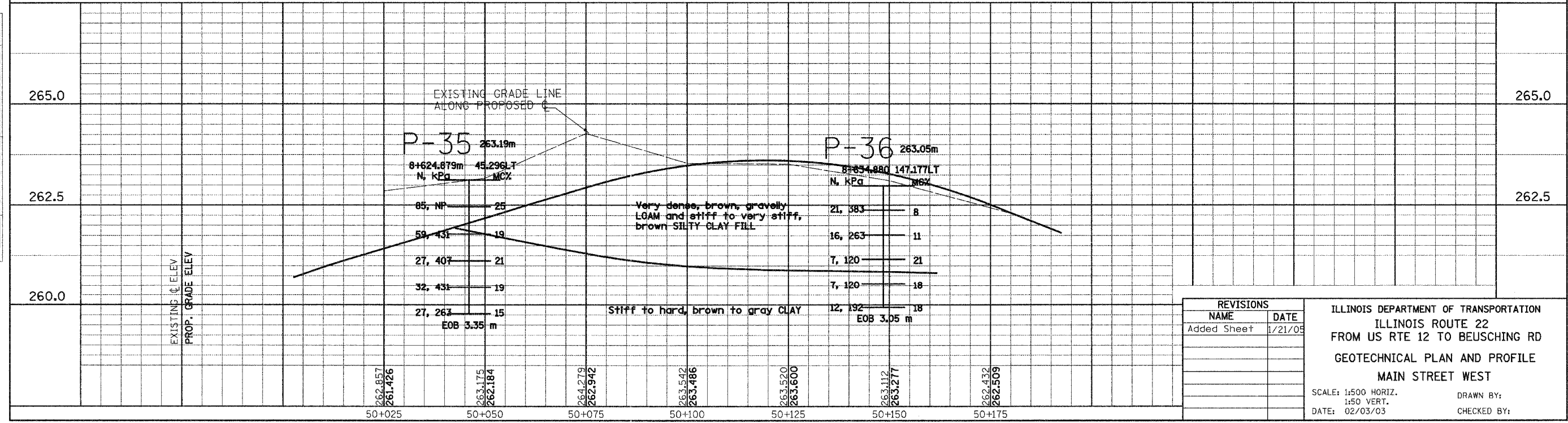


STA. 50+191.489
END IMPROVEMENT
MAIN STREET WEST

PROP. CURVE WMAINCL-1
PI STA = 50+081.950
 $\Delta = 23^\circ 11' 47''$ (RT)
R = 350.000 m
T = 71.833 m
L = 141.698 m
E = 7.295 m
e = -----
T.R. = ----- m
S.E. RUN. = ----- m
P.C. STA = 50+010.117
P.T. STA = 50+151.815

NOT TO BE USED FOR
DESIGN/CONSTRUCTION PURPOSES

ORIGINAL SURVEY	BY	DATE
SURVEYED		
PLOTTED		
NOTE BOOK		
TEMPLATE		
AREAS CHECKED		
NO.		



REVISIONS	
NAME	DATE
Added Sheet	1/21/09

ILLINOIS DEPARTMENT OF TRANSPORTATION
ILLINOIS ROUTE 22
FROM US RTE 12 TO BEUSCHING RD
GEOTECHNICAL PLAN AND PROFILE
MAIN STREET WEST
SCALE: 1:500 HORIZ.
1:50 VERT.
DATE: 02/03/03
DRAWN BY:
CHECKED BY: